

SALADO Village Voice

Car-Rt-Sort
Bulk Rate
U.S. Postage Paid
Permit No. 50
Salado, TX 76571

Volume XIX, Number 43 Wednesday, February 18, 1998 213 Mill Creek Dr. #125 P.O. Box 587 (254) 947-5321 Distributed Free

Raina Curry wins Grand Champion in 2 divisions at Bell Co. Youth Fair

by Tim Fleischer
Editor-in-Chief

Salado High School junior Raina Curry is no stranger to winning at livestock shows. But she was quite surprised to come away from the Bell County Youth Fair and Livestock Show last week with two Grand Champion banners last week.

To everyone's recollection, this is the first time a participant has won two Grand Champion awards in separate livestock divisions.

She first took Grand Champion for lambs with Andy, a middle weight medium-wool lamb. He was named Grand Champion over 190 total entries in the lamb divisions.

Andy was purchased in the auction Feb. 14 by First State Bank of Salado, for a price of \$14.50 per lb., or a total of \$1,856.

Curry said that parting with Andy after the auction was hard for her because "he has a lot of personality." She bought

Andy from Andy Turner in Copperas Cove in May last year.

It may have been easier for her to part with the Grand Champion Market Swine, purchased by the Salado Youth Fair Boosters for \$8.75 lb., or \$2,012.50.

Apparently, the second class, middleweight Hampshire which won Grand Champion honors over 557 other entries didn't even have a name.

"Pig," as Curry calls him, was purchased in July from Jason and Jenny Medlin, of Salado.

Curry showed three lambs and two market swine at Bell County last week. Her second class medium wool placed second in its class and her heavy-weight medium wool placed first in its class. Her other swine was a ninth place cross-bred lightweight.

This is the second Grand Champion lamb Curry has shown this school year. Earlier, she won Grand Champion in

the Texas State Fair in Dallas with a heavyweight medium wool. That lamb brought \$6,000 at the auction, half of which stayed with the auction to supplement its scholarships.

She also earned a fifth place with middleweight medium wool at the National Western Livestock Show in Denver in January. There she showed with 28 in the class. Over 650 lambs were shown in Denver from all across the country, Curry said.

She travels to large and small shows around the state almost every weekend with her father Ron Curry, pulling the animals behind his Ford F-350.

In addition to covering 200-300 miles in a weekend with his daughter, Ron Curry also travels about 200 miles a day as a cattle buyer for Robert Thigpen Livestock Co. in Chilton.

In May, Ron will own the silver and white F350 for three years. To date he has put over

See Curry, Page 18A



(photo by Dezri Smith)

Raina Curry is shown above with "Pig" Grand Champion. It was purchased during the auction by the Salado Youth Fair Boosters. Judy Houston, one of the Boosters, is also shown above.

SISD trustees to consider deficit budget

by Tim Fleischer
Editor-in-Chief

Salado ISD Trustees tabled discussion of a budget amendment which would increase expenditures \$117,575 and decrease revenues \$123,190.

The amendment, tabled until special meetings Feb. 22 or Feb. 23, will result in a budget deficit of \$248,671 for 1997-98.

The budget amendment is the recommendation of PFA Consultants, a firm headed by former Bastrop superintendent Paul Fleming.

Dr. Fleming and Becky Bunte presented their budget recommendations to the board at its Feb. 10 meeting.

At that meeting, they informed the board that the amended budget may drop the district's fund balance to as low as \$38,971 when the food service deficit of \$46,200 is taken into consideration.

"But if you look at the district's projected cash flow, you will notice that some time in the summer, there may be a

negative cash flow," Bunte told the board.

"The cash flow projections here are worst case scenarios, which will be presented to TEA to show a need for their assistance," Bunte added. "If you can't show them a need, you can't really ask for their help. It's very likely that TEA will work with the school district to avoid having a negative cash flow."

The state agency can assist the district in two ways:

1. TEA can allow the school to "repay" approximately \$300,000 in state revenues for previously overestimated Average Daily Attendance (ADA) over the next two years rather than all at once.

2. TEA is very likely to pay Salado ISD an additional \$61,468 for its current year ADA. Because of additional growth in the school district, ADA was under estimated for 1997-98.

The decrease in revenues is chiefly in the form of adopting conservative estimates for local property tax collection,

According to Bunte, the original budget had tax collection rates of 102 percent for current year taxes and prior years taxes.

PFA recommended that the board adjust its revenues to reflect a "conservative estimate of 95 percent collection for current year and less than 50 percent prior years collection," Dr. Fleming told the board.

"This more accurately reflects what your actual history of collections has been," Bunte added.

"We can expect TEA to give us that money this year, rather than waiting until the next school year," Dr. Fleming told board members.

The budget amendment decreases overall revenues from \$4,219,289 to \$4,096,009.

The budget amendment increases expenditures by a \$117,575, chiefly in instruction expenses.

After comparing actual salaries and additional posi-

See Budget, Page 4A

Bitter medicine may be necessary for fiscal health

by Tim Fleischer
Editor-in-Chief

Salado ISD may be forced to swallow bitter medicine in order to restore the fiscal health of the district.

Dr. Paul Fleming and Becky Bunte, of PFA Consultants, recommended several bitter pills the district might swallow to regain a healthy fund balance.

Salado ISD trustees will consider these recommendations in the coming months, especially during 1998-99 budget deliberations this summer.

PFA Consultants presented trustees with five budget considerations for 1998-99.

1. A tax increase of 8 cents will generate about \$150,000 in revenues.

2. State revenues, even with a 3 percent increase in enrollment, will be about the same

due to the required payback of funds previously received.

3. Payroll costs for 1997-98 at \$3,204,000. A moderate pay increase of 3 percent would cost the district about \$96,000.

4. The fund balance at the beginning of the year will be about \$39,000, about \$482,000 less than the recommended \$521,000 fund balance.

5. Cash flow will continue to be a problem next year if expenditures are not controlled.

PFA Consultants also recommends that the district follow these recommendations:

1. Freeze salaries at 1997-98 levels.

"By adopting a resolution to freeze salaries for one year," Dr. Fleming said, "the step increase on the state's minimum pay scale would be absorbed

See Fiscal Health, Page 4A

FORUM

An Open Exchange of Ideas

Lawman recalls 'bank heist' that went from bad to worst

by Tumbleweed Smith

Joe Cook is in charge of the Criminal Justice Department at Howard College in Big Spring. He is qualified for the position. Joe has been a lawman on the city, state and national levels. He has also worked for private corporations.

He was first attracted to law enforcement work when he visited the FBI headquarters while on a high school trip to Washington, DC. "As soon as I passed through those doors, I knew what line of work I would go into," says Joe.

After college and the Navy, he worked as an FBI Agent for ten years. He spent some of that time in Los Angeles, California working bank robberies.

"It seems that when a bank robbery call came in, it was always on the opposite end of town from where I was," says Joe. "I would usually arrive just after the robbery occurred." That made the job of solving the crime more difficult.

One day he was driving down the road and he heard on his police radio that a bank had been robbed. It just happened to be the bank just across the street from where Joe was.

He whipped his vehicle around, drove into the parking lot, got on the radio and said, "I'm here!" Joe planned to be the hero. He jumped out of the car, carefully peered through the big window to see what was going on. To his surprise,

everything seemed normal.

Joe, wearing a coat and tie, drew his gun, stuck it down at his side and entered the bank. He thought if any crime was being committed, he'd be ready.

Looking back on it now, Joe said it was a stupid thing to do.

As soon as he stepped through the door, Los Angeles Police Department officers came in the back door with shotguns. They were putting everybody on the floor. There was screaming.

And there stood Joe in civilian clothes with a gun.

He quickly got out his badge and yelled he was with the FBI.

The bank had an Oriental teller who spoke practically no English. He had an Iranian customer who spoke even less English. The Iranian customer had an account at the bank. He approached the window, put his passbook down on the counter and said, "Give me money."

The Oriental teller thought he was being held up and he hit the bank alarm.

He emptied his drawer of money and gave it to the Iranian customer, who said "Thank You" and walked out the door with the money.

That was the robbery. A robbery with no intent to rob.

Joe says it took about three days to hunt down the Iranian customer. "He was happy as a clam because he had all this money. But he had to give it back."



4th Infantry Division's Ivy Band planning April 30 concert in Salado

It is not often that a weekly column can scoop the dailies, or even the village gossips, with news of importance - but here is some information that is brand new and important.

...Exclusive...Salado...February 18...For immediate release...

"The Salado Civic Center Foundation's Board of Directors are pleased to announce that they have today, received an official confirmation from the famed Fourth Infantry Division's Ivy Band concerning a "Thank You" concert slated for the evening of April 30, 1998, to be held at the bandstand just south of the main building in the Lion's Club Park area."

How's that for late breaking news? Fact is the civic center directors have been working a long time to secure this event, as a way of saying "thanks" to the citizens of Salado for all they do to assist in keeping the center viable.

A second, and equally as important a reason for the concert, is to bring villagers together to show our appreciation to the men and women of Fort Hood's 1-4 Aviation Regiment who are in "partnership" with Salado.

Chief Warrant Officer Fred Catchings who directs the great Ivy marching band, told Foundation leaders that he will introduce Salado to the division's popular orchestra group, for an evening of "big band" music as well as several more modern numbers including the patriotic favorites that are trademarks of this outstanding musical unit.

BITTERSWEET CONCERT

The concert will have a bittersweet tinge to it since the community will also be saying farewell to two of our aviation

Off the Record

by Ken Clapp



regiment's top officers. **Lt. Colonel Doug Eller, commander of the 1-4 air group, will be leaving in May for a new assignment at the Air War College in Alabama and the regiment's executive officer, Jim Upright, who will be headed for Korea in June.**

Both of these men and their wives have played an integral part in cementing a great relationship between the aviation group and the village of Salado.

This is always troubling after we become close to our military friends. They come to us as newcomers and quickly become dear friends who are next to our hearts. And then they are reassigned - leaving us with great memories as well as a sadness that always accompanies the departure of good neighbors.

It is hoped that Tom Schwartz, the personable and universally well liked and appreciated Fort Hood and III Corps commander, will be on hand with his wife Sandy, for the concert. According to unofficial reports, Tom will be leaving this summer for a new assignment and hopefully another star, so we will also be bidding he and his lady farewell.

As a community, we need to show up in large numbers to take in the concert and also tell our military friends how much we admire and appreciate them and their families.

They have been good "partners" to Salado. Always on hand when there is something going on in the village, either to lend a hand as they did in the annual "clean-up" day in Salado or in full support of community activities as we

saw during the family festival, the art fair and many other chamber of commerce events.

We are fortunate to have these brave men and their fine families representing us and the nation and we need to take this splendid opportunity to tell them just that!

LAWYER'S FEES: "HOW MUCH IS TOO MUCH?"

The flap going on in Austin concerning the fees to be paid non-governmental lawyers who helped with the tobacco settlement, won by Attorney General Dan Morales, is pure politics with just a touch of anti-barrister bias tossed in for good measure.

The tobacco folks have agreed to settle their case with Texas for \$15.3 billion. Easily four times the amount predicted when the AG filed suit against the cigarette giants, many months ago. The losers also agreed to pay the winning lawyers a grotesque \$2.3 billion or 15% of the total. These fees purportedly to be above and beyond the agreed settlement going to the State.

Add to this messy-mix is Governor Bush, who stepped into the fray by cuffing AG Morales for not conferring about how the big bucks are to be divided when the billions start rolling in and of course the legislative hounds are baying because they didn't get their noses in the money-pie split.

Neither the Guv nor the legislators said a word while the case was in progress. Fact is few thought the AG and his minions would win in the first place and those who did - felt he would gain only a minimal sum.

When the jackpot went over \$15 billion - everyone wanted into the act.

Sly political observers in Austin have opined - in both

See Record, Page 3A

SALADO Village Voice

Member Texas Community Newspaper Association
Published every Wednesday

Location: 213 Mill Creek Dr. #125 (Salado Plaza)

Mail: P.O. Box 587, Salado, TX 76571

Phone: 254/947-5321 FAX: (254) 947-9479

Open 10am-5pm Mon. & Wed.-Fri.

Closed Tues & weekends

Deadlines: 5 p.m. Fridays

Editorial policies: Opinions on the editorial pages are those of the writer; not necessarily the owners or employees of the Salado Village Voice. All letters to the editor should be signed and have a phone number and address for verification. The editor reserves the right to reject and/or edit any letter written to him. Letters should address issues, not personalities and should be concise and constructive in approach.

Photo policy: Photographs submitted to the newspaper will be held at the office for 30 days after printing. After that, they will be discarded.

Salado Village Voice Staff

Tim Fleischer, Editor-in-Chief

Marilyn Fleischer, Managing Editor

Ken Clapp, Political Commentary

John Eubanks, Writer/Photographer

Record

FROM Page 2A

print and at various watering holes in the Capitol City - that George The Younger fears the taint, of paying outrageous fees to trial lawyers, might slop over on him in 2000, if he seeks the Republican nomination for president.

Other GOP contenders, in the race for all the marbles, might bounce the Texan hard if he didn't put up at least a token grump concerning such an immense fee. **After all - Democrats, not GOPers, are the darlings of the nation's trial lawyer tribe.**

Added to this mare's nest is the general American disdain

for the two main actors in this strange play - lawyers and tobacco tricksters.

So, what to do?

Go ahead and pay the legal fees as promised. Better than forking over what most contingency-fee attorneys charge - 30 to 45 percent (all without embarrassment or shame), and a lot smarter than going back to court and perhaps end up having the state, rather than the tobacco conspirators, pick up the tab - which could happen.

And finally - have the politicians get together and divide up the loot in a humane man-

ner - hopefully along the lines Morales has already outlined. Only difference this time would be to **allow the Guv and certain loose legislative cannons, air-time for their always available opinions.**

First rule of high-stake political maneuvering is to keep the elected pooh-bahs inside the tent when decisions are made, rather than outside howling at the moon, thereby giving voters another reason to distrust anything smacking of the political class and their bewildering bickerings.

That's -30-

Salado is site of annual City Managers' Problems Clinic Feb. 26-27 at Stagecoach

Texas Engineering Extension Service, a member of The Texas A&M University System is presenting the annual City Managers' Problems Clinic at the Stagecoach Inn in Salado Feb. 26-27.

Three informative programs have been planned over the day and a half format. The program is focused toward city managers and their direct assistants offering them the opportunity to visit informally, find out what is working in other cities and share their ideas and concerns. It is also a good way for the new city managers from around the state to be welcomed aboard.

The first session beginning 8:30 a.m. Feb. 26 will cover Affordable Housing. The focus will be on incentives for affordable housing. Speakers will include Doug Dowler, Exec. Dir. Piney Woods Home Team Affordable Housing; Joe Mann, Mngr. Home Program and Neighborhood Partnership; Roger McKinney City

Mngr. of Commerce; Ron Stephens, City Mngr of Kilgore; Gary R. Traylor, Resource Specialist-Gary R. Traylor & Assoc. Inc.

Session II on Economic Development and Tax Incentives will commence 1:30 p.m. Feb. 26. A panel will focus on the topic with Scott Joslove, Chief of Municipal Affairs from the Office of the Attorney General and Bill Shelton, CED, The Cornerstone Group participating.

Session II, 8:30 a.m. Feb. 27 is Legislative Update: Pending Legislation Affecting Municipalities. This will include an

update from the Texas Municipal League personnel on legislation which will be affecting your city in the months and years to come. There will be an chance to ask questions. This will be conducted by Frank Sturzi, Executive Director of the Texas Municipal League.

There will be a network social on Feb. 26. Two continental breakfasts, one lunch, and the Thursday evening social are included in the registration fee. For additional information call Dr. Patricia Turner at (210) 208-9340.

Letter writer thanks man who found her lost wallet

Dear Editor:

Last Sunday because of a "dumb" thing I did (like driving off with my wallet on top of my car after I'd put other things in it). I lost the wallet in a place that I would never had

looked for it. Luckily, for me, an honest person found it and returned it to me intact. I want the community to know this man. His man is Luis Castillo and he works for the Salado Water Department.

Sincerely
Ruth Howe



The Braschler Music Show!

The Temple Breakfast Lions Club will present The braschler Music Show at the Temple College Auditorium, March 7, 1998 At 7:30 p.m.

Tickets: \$10.00 in Advance
\$12.50 at the door
Tickets available at

Wards, Von Music, Picadilly & Dillards

Salado's Best Kept Secret

Margaret's Beauty Spa 254-947-9360
525 Main St. Salado

Open 8-6 by appointment. Closed Tuesday
European trained &
St John's Neuromuscular I, II, & III

Treat yourself today

to a therapeutic massage or a deep neuromuscular massage and see how wonderful you feel.

- Enhances circulation • Relieves muscle spasms
- Releases tension • Improves muscle tone
- Increases blood supply to muscles
- Helps prevent muscle atrophy
- Promotes balance and flexibility

Back Massage	30 Minutes	\$20
Full Body Massage	1 Hour	\$35

Elza Porcel Edwards, MS., LPC., LCDC.,
Licensed Professional Counselor
405 N. Main St. Salado, TX 76571
254/947-1176 for appointment

Adolescents, Families, Couples & Adults
Individual, Group & Family Psychotherapy

Champus/Tricare, Blue Cross/Blue Shield,
Corphealth, Medicaid

Salado Medical Clinic
Ramiro A. Peña, M.D., P.A.
Diplomate American Board of Surgery
Fellow of American College of Surgeons
Family Practice and Primary Care

Medicare Medicaid
United Health Care
Ethix Southwest
PHCS

213 Mill Creek Dr., Suite 180
Salado, TX 76571
(254) 947-9044 1-800-947-9044
Se Habla Español

Changing Jobs or Retiring?

Call A.G. Edwards for alternatives on how you can receive and manage your distribution from your company's retirement plan.

A.G. Edwards
INVESTMENTS SINCE 1887
3407 S. 31st St., Suite 120
Temple, TX 76502-1902



Mike Miller
773-1504

7884.02b
DTR-130-1097

Member SIPC
1990 A.G. Edwards & Sons, Inc.

\$20 storage
BELTON
STOR-IT
939-3338

Doug Spiller
Photography

Royal St. Commons
Salado, Texas
254-947-8585



Weddings • Bridal • Children • Family • Boudoir

Budget

FROM Page 1A

The Choppin' Block
 at *Robertson's Hams*
 Central Texas' Finest Gourmet Shop

Large selection of gourmet coffees
 Whole bean or ground
The Republic of Tea
 Leaf or Bag
 Many tea accessories
 including strainers
 & tea balls



Open Daily
 I-35, Exit 285 Salado
 254/947-5562

Pietro's
 ITALIAN RESTAURANT

"WHERE WE FEED YOU
 LIKE THERE'S NO
 TOMORROW"

302 N. MAIN ST.
 FOR DELIVERY & TAKE OUT
947-0559

HOURS
 SERVING LUNCH MON-SAT 11AM-2PM
 SERVING DINNER MON-THUR. 5-9 PM
 SERVING DINNER FRI-SAT 5-10PM
 CLOSED SUNDAY



**ANNOUNCING A SPECIAL
 HOMEOWNERS INSURANCE
 PROGRAM
 FOR OUR COMMUNITY.**

If you own a well-maintained home, you may qualify for our new policy called the Small Town Protector for Homeowners in some rural communities. The policy may save you money because it's based on the actual cash value or market value of your home instead of its replacement cost.

The policy also covers your personal property—anywhere in the world—from fire, theft and many other uncertainties. It also provides personal liability coverages.

Call me now for a brochure and a *Farmers Friendly Review* to make sure your insurance is up-to-date.

John Hall Insurance Agency
 Salado Civic Square
 (Main St. & Van Bibber next to Salado Civic Center)
 947-3151 Fax 947-3772



America can depend on Farmers

tions to what was originally budgeted, PFA informed the board that an accurate budget for instruction must be increased from \$2,475,411 to \$2,535,590, a change of \$60,179.

The general administration budget also increases over \$60,000 due to the following items: \$9,300 increase for salaries for Superintendent/Administrative Professional; \$12,000 for salary for interim superintendent (through March) and \$16,250 for salary for new superintendent (April-June 1998).

The amended budget increased the plant maintenance and operation budget by \$10,000 in the following ways: \$10,000 cut in contracted maintenance and repair;

\$33,000 increase in electricity costs; \$3,000 cut in ground maintenance supplies and \$10,000 cut in capital outlay because the construction and improvement of practice fields has been moved "off budget" to bond construction costs.

The board also considered adopting a resolution to freeze teacher salaries at the present level for the 1998-99 school year. (See related story)

In other business, the board rescinded Policy BBE concerning complaints, approved the diversified career preparation program for Salado High School and adopted a local transfer policy.

Following a two-and-a-half hour executive session, trustees extended the contracts of its campus administrators and

athletic directors. The 7-0 vote came on a motion from Mike Wiley with a second from Mike Gunter.

The board voted unanimously to authorize interim superintendent Joe Pirtle to discuss the purchase of land adjacent to the present school campuses with its owner. The motion by Mike Gunter received a second from Rita Brown.

Interest earned on bonds passed in September for construction of the new middle school will be used to pay for the possible real estate transaction.

The board set its next regular meeting for 7 p.m. March 24 at the Salado Civic Center.

Fiscal Health

FROM Page 1A

by the \$2,000 above state base the district pays now."

"There would be no decrease in individual teacher's salaries," he added. However, the amount an individual teacher is paid above the state base will range from about \$570 to \$1,240, according to Dr. Fleming.

"Salado is not alone in facing tough decisions like this," he added. "The legislature is forcing almost all school district to pay at state base."

The state does this by reducing the amount of state revenues to districts which pay above state base. If a school elects to pay \$2,000 above base, it loses that amount in state revenues.

The board will consider adopting a resolution to freeze salaries during special meetings Feb. 22 or Feb. 23.

2. Evaluate need for all positions in the District. It is evident that the District probably does not need more than one agriculture teacher. A hard look should also be taken at the secondary level schedules to see if staff is being efficiently utilized. It is possible that other positions can be eliminated through attrition or, if necessary, a reduction in force.

3. Determining why the electricity costs continue to rise. Evaluate the need to keep the air conditioning system at the high school running all summer.

4. Consider reduction in stu-

dent travel cost.

5. Evaluate custodial management contract to see if it is cost effective.

6. Begin planning now for the cost of opening the new school in the fall of 1999. Typically a new school for 250 students will have an operating overhead of about \$200,000 per year. This does not include the cost of teachers.

7. Develop plan for either hiring a business manager or contracting with a consultant for assistance in keeping track of cash flows and calculations of the projected revenues, state funding, etc.

The board will consider these recommendations at upcoming meetings.

Salado Creek Preservation Committee Test Results

February 3, 1998 Test Date

Site Name and Number	Water Temperature (Celsius)	Dissolved O2 mg/liter	pH	Total Dissolved Solid parts per million	Phosphate mg/liter	Nitrates mg/liter	Fecal Coliform Colonies per 100mL
#1 Summers Mill	NA	10.1	8.2	0.50	0.38	3.0	166.7
#2 Chisholm Trail	12	8.8	8.4	0.50	1.56	3.3	33.3
#3 Sirena	14	10.0	8.6	0.40	0.46	3.1	83.3
#4 Pattersons Crossing	12	11.2	8.6	0.40	0.61	2.5	133.3
#5 Stagecoach Inn Dam	12.5	8.6	8.4	0.40	0.23	3.2	83.3
#6 Access Rd. Stagecoach Inn	14.5	9.5	8.6	0.40	0.57	3.3	100

All sites are acceptable by state standards for recreational use. If you are interested in becoming a Salado Creek Preservation Committee volunteer water monitor, please call Jim Dale at 947-5935 or 947-0247.

Items begin arriving for Salado Civic Center's Annual Auction

A wide variety of very special and very auctionable items have begun arriving at the Salado Civic Center in preparation for the Fifth Annual Civic Center's premier auction slated for Saturday, March 7, at the elementary school cafetorium, according to a report from Patsy Sanford, this year's auction chairman.

The always excellent meal prepared by Mike Mikeska's expert cooks will begin at 6 p.m. the evening of the auction and will feature a combined plate of beef sirloin, barbecued chicken and sausage plus all the trimmings. Dessert will feature some outstanding brownies from the kitchen of Cathy's Boardwalk Cafe.

Bill Hall, recognized as one of the top auctioneers in Texas will gavel the proceedings.

Ken Clapp, chairman of the board, asked participants to remember that all proceeds from the auction will go immediately into paying for the planned re-roofing of the center due in large part to the fact that during the renovation process some six years ago, a less than satisfactory job was done to prevent water leaks from destroying the otherwise excellent work on the interior of the building.

Clapp further noted: **"The board has high hopes that villagers will attend the auction with a single purpose in mind and that is to make a contribution rather than thinking in terms of a garage sale where one picks up items on the cheap!"**

"Merchants and other villagers have donated a large number of excellent and expensive gifts that should be purchased through spirited bidding so the winner not only receives a useful item but also has made a charitable contribution to the village's excellent meeting place that is home to the library, chamber of commerce, historical society and the school administration building. Funding for the maintenance and operation of the civic center, including major repairs such as the roof this year and the expansion of the parking area in 1997, depend on rentals, gifts and the annual auction."

"We have no tax base nor do we have the good fortune of being eligible for state and national grants since we are not incorporated hence we depend on activities such as the once a year auction to keep our doors open, the building clean and presentable for our permanent renters, community organizations and our visitors," Clapp concluded.



STRAWBERRY PATCH, a popular Main Street gift and coffee shop, is the scene above picturing owner Nettie Fay Ray (right) presenting Civic Center board member Wilma Williams with an expensive signed and numbered, limited edition watercolor by the well known artist Dodie Knight. The exquisitely framed painting pictures two young girls playing with their dolls in a colorful garden and will be a delightful addition to any home. This generous gift from Mrs. Ray will join a number of other valuable donations to the Civic Center's Fifth Annual Auction and is greatly appreciated, according to board member Williams.

LIST OF GIFTS BEGINS TO GROW

At the end of this past week, a number of donated items were being delivered to the civic center business office, according to Hulda Horton, building manager.

Gifts include: a handmade quilt donated by Patsy Sanford; six handcrafted treasures from Wilbur and Jessie Foster which will be featured in a picture story in a subsequent issue of the *Salado Village Voice*; gift certificates from the Halley House and the Mansion on Main Street and a signed and numbered limited edition watercolor print by the well known painter Dodie Knight, donated by Nettie Faye Ray, owner of the Strawberry Patch (see related picture in this edition of the *Salado Village Voice*).

Other items ready for the auctioneer's gavel on March 7, include: Two nights for two at the famous Y-O ranch near Kerrville, donated by the Charles Schreiner family; homemade cakes and other bakery items will be donated by Minnie Autry and Mary Belle Brown.

The *Salado Village Voice*, always a strong supporter of the civic center auction, will donate a number of subscriptions to the newspaper that can be mailed to friends and relatives across the nation.

Bill Bartlett and his associates at Century 21 will once again provide a money jar which will give some lucky person a large windfall for just the price of a single chance-ticket.

Additional gifts: high tech bathroom scales from Woodie and Perry Grisham; assortment of children's toys from Bill and

Katherine Wende; a banquet size coffee pot from Jim and Frances Falkner; an especially designed floral arrangement created by Charles Allen; round of golf for two donated by Mill Creek and the always popular butterfly house by Dick and Dorothy Westlake.

Chairman Sanford noted that next week's issue of the *Salado Village Voice* will feature not only an expanded list of donated items but also several picture-stories about gifts that have been donated to help make this year's auction a success.

AUCTION MEAL TICKETS ON SALE AT AREA BANKS

Tickets for the meal that precedes the auction are on sale at the Civic Center business office as well as at the Compass Bank and First State Bank in Salado. Civic Center Board members who are also selling tickets include: Bob Cottle, Lloyd Parks, Patsy Sanford, Wilma Williams, Pete Jennings, Jim Patterson and Ken Clapp.

Price of tickets are \$7.50 for the complete meal as well as for the auction to follow.

You can advertise for less than \$10 per week.
(Three month contract required).
Call Salado Village Voice at 947-5321 for more information.

BICKEL'S CONTRACTING AND PAINTING

Remodeling Wallpapering Free Estimates
Decking Reasonable Prices Quality Work

Just give us a call!

Ed Bickel OR Jeff Bickel
(254)780-2256 (254)770-1007

SALES **Mattress & Upholstery**

(Founded 1963)

515 E. Veterans Memorial Blvd. • Harker Heights, TX

254-699-6105

KASMR FABRICS **Custom Upholstery**
featuring the wide selection of *Kasmir Fabrics*

PENNZOIL **MinitMan**
Performance. Protection. Quality.™
10 Minute Oil Change - Since 1978

Services Provided	ALL MAJOR BRANDS OIL AVAILABLE	Service Includes:
<ul style="list-style-type: none"> • Oil Changes • Transmission Services • Radiator Drain & Refill • Fuel Injection Cleaning • State Inspection (Belton Only) 	<p align="center">We Accept DIAMOND SHAMROCK VISA/MASTERCARD American Express Discover Card</p>	<ul style="list-style-type: none"> • Up to 5 Quarts Oil • New Oil Filter • Chassis Lube • Check & Fill All Fluids • Inspect Belts, Hoses, Exhaust

MinitMan #1 BELTON • 1702 N. MAIN ST. • 933-0526
HOURS: MON-FRI 8 A.M.-5:30 P.M. SAT. 8 A.M.-1 P.M. CLOSED SUN

MinitMan #2 KILLEEN • 3007 E. Rancier • 554-5556
HOURS: MON-FRI 8 A.M.-5:30 P.M. SAT. 8 A.M.-1 P.M. CLOSED SUN

CALL NOW FOR WINTER DISCOUNT RATES

Over 20 Years Experience Covering All Of Texas

FREE ESTIMATES
HB ASPHALT PAVING
Specializing in
Residential Driveways, Parking Lots,
Asphalt Repairs & Seal Coating
1-800-693-9483
"No Job Too Small or Too Far Away"

LONE STAR GRADING & MATERIALS

House Pads & Hauling

<p>Specializing In:</p> <ul style="list-style-type: none"> Top Quality House Pads, Lot Preparation Gravel Driveways & Roads 	<p>Your Outlet For:</p> <ul style="list-style-type: none"> Sandy Loam Topsoil All types Sand, Gravel & Fill Materials
--	--

All Types Dirt Work • Top Soil Installation
Evening & Weekend Delivery Available
ALL WORK GUARANTEED!
Billy Helm (254) 947-0149
(254) 933-7902

"Come See What a Nursing Home Should Be"

Park Place Manor

810 East 13th Avenue
Belton, TX 76513
254-939-1876

BUNDLE OF JOY!

- ☉ Elegant gifts
- ☉ Irresistible children's wear
- ☉ Unique cribs
- ☉ Beautiful custom bedding
- ☉ Maternity fashions

Creekside Center Main St. 947-0609

Attend the Weekly Church Service of Your Choice

FIRST BAPTIST CHURCH OF SALADO
Main St. at the Creek
947-5465
SUNDAY
*9:40 a.m. Bible Study
8:30 & 10:50 a.m. Worship
5:30 p.m. Evening Worship
*6:30 p.m. Adult Study Courses
WEDNESDAY
*6:15 p.m. Prayer & Praise
** Age appropriate activities & classes for pre-schoolers, children & youth*
Rev. Brian Dunks, Pastor



SALADO UNITED METHODIST CHURCH
SCHEDULE

Early Service	9 a.m.
Sunday School	10 a.m.
Worship Service	11 a.m.

Nursery available:
Church & Sunday School.
Information 254/947-5482

St. Stephen Catholic Church

7 p.m. Wed. Grades 9-12
Religious Education Class
5:30 p.m. Sat. Eucharist
9:30 a.m. Sun. K-8th Grade
Religious Education Class
11 a.m. Sun. Mass

601 FM 2268
(Holland Rd.)
Deacon John Petter
947-8037

Salado Church of Christ
Sunday

Bible Class	9 a.m.
Worship and Children's Bible	10 a.m.
Evening Worship	6 p.m.

Wednesday

Ladies Bible Class	10 a.m.
Bible Classes	7 p.m.

(All ages)
Dempsey Stripling, Minister
IH-35 at Blacksmith Rd.
947-5241

Grace Baptist Church

John Warden Pastor
2mi. West of I-35 on 1670/2484

Worship Schedule

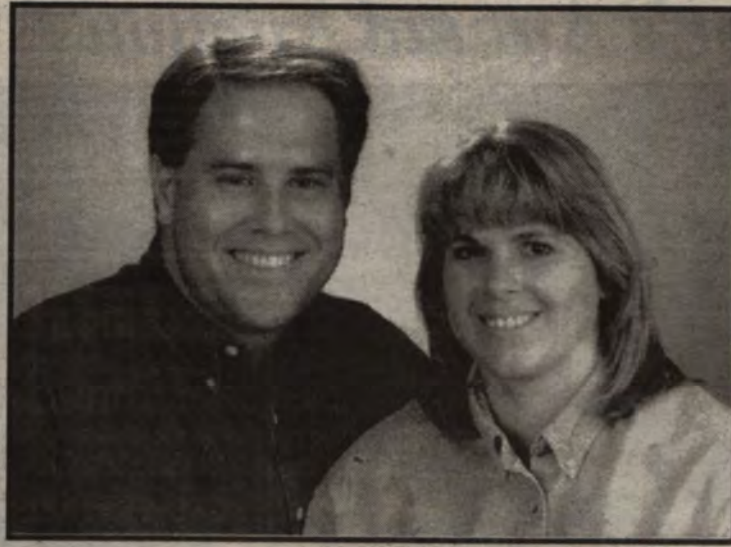
Sunday School	9:45 a.m.
Worship	11 a.m.
Bible Study	6 p.m.
Wednesday Praise & Prayer	7:00 p.m.

Presbyterian Church of Salado

10:00 a.m. Sundays at Allen Meeting Hall
Pace Park Drive behind The Inn at Salado
Billy P. Smith, Th.D., Minister,
Grace Presbytery, Presbyterian Church (U.S.A.)
Marilyn Legge, Parish Associate
254-947-8470 254-947-9935

Familiar Faces

News of the Churches and People of our village



Larremore to wed Nelson

Melissa Ann Larremore of Burleson, Texas and William Rodgers Nelson of Fort Worth, Texas announce their upcoming wedding, that will take place 7 p.m. March 7, 1998 at the First United Methodist Church in Fort Worth.

Parents of the bride are Demetra Larremore of Fort Worth and Lack Larremore of Salado.

The groom's parents are Mr. and Mrs. Frank O. Nelson of Amarillo, Texas.

Melissa Ann Larremore is a 1986 graduate of Texas Tech University and is currently employed with the Federal Aviation Administration.

William Rodgers Nelson is a 1989 graduate of Texas Tech University currently employed with Plastic Suppliers.

Services held Feb. 11 for Louis Griffith

Louis Griffith, 87, of Salado died Feb. 11, 1998 at a Temple Hospital.

Services were held Feb. 14, at the Heartfield Funeral Home Chapel with Rev. Joe Bentley and Rev. Bruce Baker officiating. Burial followed at the Salado Cemetery.

Louis Griffith was born to Edgar Eugene Griffith and Nannie Poteet Griffith in Salado, Texas. He married Thelma Stewart on August 9, 1935 in Belton, Texas. He worked for the Texas Highway Department in various locations. He also worked for the Houston Lighting and Power for 35 years. He moved back to Salado from Houston in 1975. He was a member of the Salado United Methodist Church.

Survivors include his wife Thelma Griffith of Salado; one son David Griffith of Lakeway, Texas; one daughter Linda Griffith Thomas of Salado; one brother Bill Griffith of Dallas; two sisters Susie Cabaniss of Salado and Doris Oswald of Bellaire, Texas. He is also survived by 4 grandchildren and 3 great-grandchildren.

Memorials may be sent to the Salado Cemetery Fence Fund P.O. Box 86, Salado, TX 76571.

Luchsinger to perform at SHS

Make plans to enjoy the Susie Luchsinger concert at the Salado High School cafeteria at 7 p.m. Feb. 21. There will be no charge, but a love offering will be taken.

Susie has won numerous honors and awards from the Christian Country Music Awards, including Female Vocalist of the Year in 1994 and 1995. She was also voted Christian Country Artist of the Year by Gospel Voice Magazine in 1996, as well as numerous nominations for Dove awards.

In recent years Susie has appeared on Nashville Now, CBN's 700 Club, The Richard

Roberts Show, Miracles Now with Oral Roberts, the Trinity Broadcasting Network, The Leeza Gibbons Show, Music City News, Crook & Chase, and Day & Date.

Susie, Paul and the family travel across the United States, Canada and as far as the country of Australia. She performs at concerts, churches and rodeo events, fairs (both state and county), conventions, and special events.

There is limited seating available and it will be first come first serve.

"Be sure to come early so you won't miss this wonderful blessing," organizers said.

THE ILLUSTRATED BIBLE

Jesus Speaks with Authority

"And they were astonished at his teaching, for he taught them as one who had authority."

— Mark 1: 22



It was only natural that when Jesus began His ministry, many would be astonished at the power and authority of His words. What they were not aware of was that He was the Son of God invested with the mission of bringing His Father's grace and love to all believers. Thus, Jesus spoke with the blessing of God and with His words, and the assurance that what He said was the truth. In the two millennia since Jesus walked this earth, there have been many who would deny Him and His message, but the majesty of His sacrifice and the authority of His words have carried through time with the promise to all men of faith that God cares for His followers. One would be foolhardy in the sight of such authority to risk denial of His commandments.

Waco Symphony sets last concert

The Waco Symphony will present its last chamber music concert of the season at 4 p.m. Feb. 22 at Six-Shooter Junction, 520 Austin Ave. The program will feature a piece by Sergei Prokofiev, "Quintet, Op. 39" and "Introduction and Allegro" by Maurice Ravel.

The musicians performing the Prokofiev are Bruce Berg, violin, Kathryn Steely, viola, Christopher Buddo, contrabass, Doris DeLoach, oboe and Richard Shanley, clarinet. The Ravel piece will be performed by Bruce Berg and Noel Martin, violin, Julie Hardie, viola, Gary Hardie, cello, Helen Ann Shanley, flute, Richard Shanley, clarinet and DeLaine Fedson, harp.

Admission is \$9 for adults and \$4 for students. Tickets may be purchased at the door. The Waco Symphony Council will provide refreshments after the concert and a cash bar will be available. The chamber music series is sponsored by Jacobs-Cathey Company and First Waco National Bank.

District judge, clerk candidates to debate Feb. 18 at Bell courtroom

The candidates for District Judge and District Clerk will face off in a debate at the Bell County Commissioner's Courtroom in Belton 11:25 a.m. Feb. 18.

District Judge Martha Jane Trudo will answer questions with challengers Gordon Adams and Dan Corbin while District Clerk Shelia Norman will again face challenger Alice Wilkins.

The Bell-Mills-Milam Counties Bar Association is hosting the event. Lunch will be available for purchase at 11 a.m. with the forum beginning at 11:25 a.m.

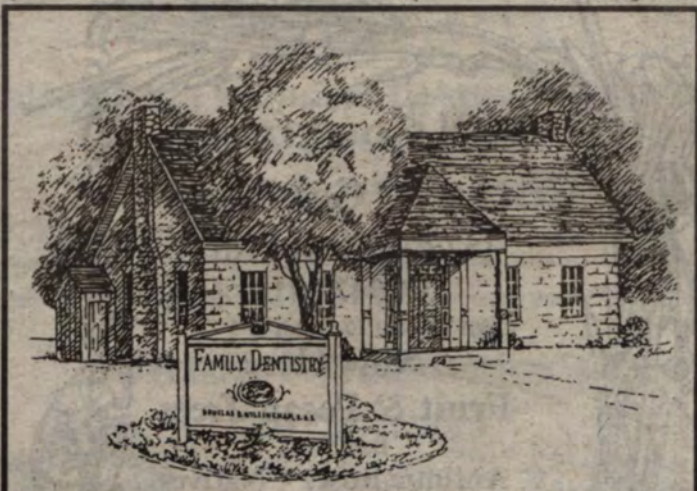
Former bar President and Killeen lawyer Frank Holbrook will be the moderator for the event.

Mary Black Pearson, president of the Bar Association, welcomes members of the public to this event to see their courthouse in action and to hear the candidates.

"This event is not just for lawyers," Pearson said, "but for all, because courthouse business is the people's business."



Salado Boy Scouts of America Bear Den 1 Pack 115 held its Pinewood Derby Race at Tablerock this Month. Shown above are (from left) first Place Justin Pruitt, second place Tommy Schatte and third place Logan Foster. The competition was tough with triple elimination. There were 14 boys participating in the event. Most will enter their car for District Race in a few months. Mike Foster and Rolly Correa run the Den 1.



Douglas B. Willingham, D.D.S.

Family and Cosmetic Dentistry Since 1980

At the corner of Main Street and Thomas Arnold Road in the historic Armstrong-Adams House (c. 1869) Salado, Texas

- Bonding • Bleaching • Laminates
 - Children's Dentistry • Preventive Care
 - Full Mouth Rehabilitation
 - Strictest Sterilization Techniques
- MC/Visa/Discover accepted

254/947-5242

We Accept the Scott & White Health Plan



In ancient times many people believed that a forked hazel twig had supernatural powers, hence the idea that divining rods of hazel can be used to find water or minerals underground.

HOLLAND PACKAGE STORE

Beer • Liquor • Wine • Case Discounts
Hwy. 95 next to Holland Food Mart
Holland, Texas 657-2428

Canadian Mist

1.75L 80 proof \$12⁹⁹

McCormick's Vodka

1.75L 80 proof \$8⁴⁹

Specials good February 18-24, 1998



Very Early American Furniture

Our native limestone benches and tables are perfect for your "outdoor living room." Whether they are used for an accent or a focus in your landscaping design, they are sure to please and draw rave reviews from friends and neighbors.

We also design, plan and build natural limestone patios, walkways, and retaining walls which nestle into our Texas landscapes.

Our work is meant to be lived on, looked at and admired.

For a Free Estimate, or a look at our work, give us a call.



Texas Limestone Landscaping

P.O. Box 359 Salado, TX 76571

(254) 947-8949

(254) 947-3309

MagneCon Systems



MAGNETIC WATER CONDITIONERS FOR THE HOME

"The Salt Free Solution to Hard Water Problems"

(254) 947-4328

For Information and Home Demonstration
YOUR LOCAL SALADO DISTRIBUTOR

"In Partnership with the Environment"



Membership Information

Name: _____

Address: _____

Phone: (work) _____ (home) _____

- _____ Family or Individual Membership (\$15.00)
- _____ Business or Organization Membership (\$30.00)
- _____ Sustaining or contributing (Greater than \$30.00)
- _____ Amount enclosed. (All dues are tax deductible).

Please make checks payable to: Salado Historical Society and mail: Salado Historical Society, P.O. Box 251, Salado, Tx. 76571.

**Hill Country
Cottage Gardens**

152 Blackberry Rd.
254-947-0416

Open Wed-Sat 10-5, Sun 12-5
Now Here
Fruit & Pecan Trees
Bare Root
Antique Roses • Natives
Perennials • Herbs

Tyler Fletcher to present slide show Feb. 19 when Salado Historical Society plans to meet

The first general meeting of the members of the Salado Historical Society and Saladoans will take place in the Meadows Auditorium in the Civic Center 6:30 p.m. Feb. 19.

Tyler Fletcher of Fletcher's Books and Antiques will present a slide show of stained glass windows in old historic churches from around the state.

Over the years, the Historical Society has initiated many projects and participated in others. Some past and present projects include the annual homes tour, Landmark Awards program, restoration of the Boles-Aiken log cabin, scholarships, establishment of the Salado Historic District, preservation of the ruins of Salado

College and others.

The Historical Society is supported by donations, dues from membership and annual events.

To become a member of Society fill out the adjacent form. Donations to the Society can be mailed to P.O. Box 251, Salado, TX 76571.

Auditions set Feb. 27-28 for 'Salado Legends'

The outdoor musical drama, *Salado Legends*, will conduct auditions for 1998 performances 7-9 p.m. Feb. 27 and 1-5 p.m. Feb. 28 at Tablerock's indoor stage located on Royal Street in Salado, Texas.

Salado Legends requires singers, actors, dancers and crew of all ages. Last year's cast, crew and workers consisted of over 150 people ranging in ages from 6 months to 85 years. Twenty-eight families used the summer of fun as a family project. The old saying "The family that plays together stays together is true," says Rolly Correa. His family of 5 have used the "Legends" summer as family recreation for the past 2 years.

Singers should bring tape and tape player for their accompaniment. Actors will give cold readings from a furnished *Salado Legends* script. Dancers need only to list their experience.

Rehearsals begin June 8, weekdays 7-9:30 p.m. Dance rehearsals will be on Saturdays from 7:30-9 p.m.. July rehearsals begin on July 6, weekdays 7-9:30 p.m.. Pre-Tech is July 10. Pre-Dress July 11. Run Play July 13-15. Tech July 16. Dress rehearsal on July 17.

Performances on July 18 and 25 and Aug. 1.

Please call Tablerock Amphitheater at 947-9205 with audition questions.



The song *Moonlight in Vermont* contains no rhymes. It was written by John Blackburn, with music by Karl Suesdorf.



Has Your Bank Left A Sour Taste In Your Mouth?

Try the friendly folks at First State Bank of Temple.
You'll get straight talk, answers to your questions.
And probably a warm smile and the offer of a cup of coffee.

At FSB, we believe in *Friendly Style Banking*, banking the way it used to be. Simple. Built on relationships. And honest. The kind of banking that seals the deal with a handshake and knows that all the paperwork is just a formality. The

kind of banking where stopping in to take care of business just might turn into showing pictures of the grandkids and a promise to get together later, for homemade ice cream or a piece of pie.



First State Bank

Friendly Style Banking

5550 SW H.K. Dodgen Loop in Temple • (254) 771-5550 / 402 N. Main in Temple • (254) 771-5880
405 N. Highway 95 in Little River Academy • (245) 982-4818 / Main Street at Thomas Arnold in Salado • (254) 947-5852

Member F.D.I.C.

Home & Garden Show set Feb. 21-22

The Home & Garden Show for Central Texas will this year feature the largest assortment of exhibitors in the 15-year history of the show. About 140 exhibitors will be displaying their products and services to the some 10,000 Central Texans that are expected to attend this year's event. The 1998 Home & Garden Show is expected to attract attendees from over 95 area cities and communities.

The Home & Garden Show will be held at the Bell County Expo Center in Belton 10 a.m. until 6 p.m. Feb. 21 and 11 a.m.-5 p.m. Feb. 22. Admission will be \$4 per person. Children 12 and under will be admitted free.

A vast array of products and services will be exhibited in the show. These will include energy efficient and healthy items for the home, appliances, art and other decorative items, new trucks, bath specialties, brick and tile products, cabinets and cabinet hardware, and decorative and privacy fencing products.

An assortment of floor coverings will be on display, including Wilsonart International's line of laminated flooring in addition to tile, wood flooring, carpet, vinyl and rugs. Windows and glass enclosures, doors, lighting wares, concrete products, fireplaces and stoves, shutters and blinds, and other specialty household items will also be featured.

The 1998 Home & Garden Show will feature expanded displays of pools, spas and hot tubs in the Exposition Hall at the Bell County Expo Center. Five pool and spa companies will be displaying 5,000 sq. ft. of the latest in pools, spas and hot tubs.

Home sporting and recreational products and services on display at the show will include billiards, sport courts and

resort accommodations. Also there will be companies exhibiting television, satellite, cable and home theater products and services. Home security, water, tools, and other specialty items will be on display.

A number of builders and remodelers will be on hand to answer questions concerning home building and the home building industry. Remodelers will be showing and demonstrating their products and services to show attendees. These will include kitchen products, including appliances, siding products and services, windows and patio covers, air conditioning and heating products, security systems, and numerous other specialty products and services. Developers will be promoting building lots that are available in the market. In addition, Realtors will be available to explain their services and to show homes that are for sale in the area.

Service industry exhibitors that will be at the show will include banks and mortgage companies, insurance, real estate, and design and architectural services.

Other companies in the show will be exhibiting lawn and garden products, including lawn mowers, sprinkler systems and other garden specialties. In addition, several lawn irrigation companies will be exhibiting the latest innovations and products in lawn watering.

Live food preparation demonstrations will also be held at the show. Plus, personal care and health related items will be available for demonstration and for sale.

Many exhibitors will have drawings in their booths for door prizes throughout both days of the show, plus drawings for prizes at the conclusion of the show on Sunday evening. You do not have to be present to win.

EXPO '98

The Home & Garden Show For Central Texas



BELL COUNTY EXPO CENTER

UNDER THE BIG EXPO DOME & ADJACENT ASSEMBLY HALL & EXPOSITION BUILDINGS
— Interstate Highway 35 at Belton, Texas —

Saturday, Feb. 21, 10 am - 6 pm ■ Sunday, Feb. 22, 11 am - 5 pm

- ◆ 140 companies representing the Home and Garden Industry
- ◆ Seminars on Building & Remodeling Topics free with admission
- ◆ Free seminars on Garden & Landscaping Topics both days
- ◆ Door prize drawings from exhibitors throughout each day
- ◆ \$4.00 single-day or \$6.00 two-day admission — 12 and under free

For information call 254-773-0445

COUPON

GOOD FOR UP TO SIX ADMISSIONS AT THE EXPO '98 - HOME & GARDEN SHOW FOR

50¢ OFF

THE REGULAR ADMISSION PRICE. GOOD SAT. OR SUN. • FEB. 21 OR 22

COUPON

TOWNE INTERIORS & DESIGNS

Everything you want for your home or office... furniture, rugs, lamps, accessories, floor coverings, and window treatments. Complete your look with our unique collections.

Visit us today and let one of our designers help create the look that's right for you.



2100 Trimmier Rd.
Suite #102
Killeen, TX
At Liberty Square
(254) 690-4900

Brenda Ray - Owner
Licensed Interior Designer

Carolyn Riley
Designer

Killeen True Value.
Help Is Just Around The Corner

Diazinon 5% Controls pests
OR
Dursban 1% Granules
\$4.98
10 lb. bag

Fire Ant Killer
with Dursban kills fire ant queen deep in the mound
\$2.99
3.5 lb. bag

We Also...
• Cut Keys • Cut & Thread Pipe
• Have Home Gas Delivery
• Refill BBQ Grill Cylinders
• Have Front Row Parking & Quick Check Out

KILLEEN PROPANE AND HARDWARE
3905 E. (Bus. 190) Vet. Mem. Blvd. • 699-3161
"A Real Hardware Store"

BURGER KING

Open 6a.m.-10 p.m.
Drive-thru

- Breakfast Menu
- Kid's Meals
- Shakes
- Burger Meals

254-947-8060
I-35, exit 284

FSB First State Bank

Lobby Hours:
Monday - Thursday 9 a.m.-3p.m.
Friday 9 a.m.-4 p.m.

Drive-in:
Monday - Thursday 7:30 a.m.-4 p.m.
Friday 7:30 a.m.-6 p.m.
SATURDAY 9 a.m.-12 noon

"Where full banking services are traditional"
Main St. at Thomas Arnold Rd. Salado
254/947-5852 Member FDIC

Bar-B-Q Family Pak Special!

Your choice: 1 Lb. Beef or Sausage, or 1 whole Chicken; 3 Pints of Vegetables, Bread, Pickles, Onions & Sauces. Serves 4 **\$10.95** PLUS TAX

EVERY MONDAY & TUESDAY! Reg. \$12.95

Clem Mikeska's Bar-B-Q
57th & Ave M., Temple, 774-5481

Blass Floral & Gifts

afs
Owner
Denny Blass

254/947-5529
1-800-400-1580

1209 N. Stagecoach Rd.

Trust Your Eye Care Needs to the Eye Center

The Eye Center provides a complete range of services including:

- Clear cornea cataract surgery
- Complete eye exams
- Near-sightedness
- Contact lenses
- Correction Surgeries
- Retina specialists

Alan C. Jones, M.D.
Neil M. Baalka, Jr., M.D.
Donald F. Sessler, O.D.

Eye Center of Central Texas
773-7785
1817 S.W. H.K. Dodgen Loop Temple

Markie McTravel

A Full Service Travel Agency

213 Mill Creek Dr., Suite #110
(254) 947-1168
Open 9:00-5:00 Mon-Fri

CIA
CRUISING: THE BEST VACATION

Rick's Tire Service

111 S. Hwy Blvd. Belton
(next to Bobby's Burgers)
(254) 939-7578

- New/Used Tires
- 24-Hr. Road Service
- FREE Road Hazard on all new Tires

Pager (817) 770-5907 Ask for Mike
Sonny Whiteley Owner



(photo by John Eubanks)
Lady Eagle Leah Davis goes up for a shot against Hutto in the team's home finale Feb. 6.

Lady Eagles open playoffs against a team that beat them in December

by John Eubanks

Despite a 32-point loss in a postseason warmup game Feb. 14, the Salado Lady Eagles will begin the playoffs on a positive note of sorts.

They most likely can't play any worse.

The Lady Eagles will play Valley Mills at 7 p.m. Feb. 19 at McGregor in a Class 2A bi-district girls basketball game.

Tickets are \$4 for adults and \$2 for children.

Salado (27-7) played Goldthwaite Feb. 16 at Lampasas in a final warmup game (results were unavailable at press time) before opening the playoffs. A win would surpass Salado's 27 wins last season.

The aforementioned 66-34 loss to Malakoff at Mart surpassed the six losses from last season. It was also the worst shooting performance of the season, Coach Larry Salisbury said. They shot 10 of 50 from the field and 13 of 30 from the free-throw line. Leah Davis was Salado's leading scorer with seven points. Katie Punchedard added six.

Even though Salado was playing a 25-4 Malakoff team that's ranked ninth in Class 3A, Salisbury said he was surprised by his team's performance. Salado was outrebounded 33-20, committed 29 turnovers (11 more than Malakoff) and trailed 39-13 at halftime.

As for Valley Mills, Salisbury said, "It's going to be a tough game."

Valley Mills' Lady Eagles (23-8) placed second in District 25-2A, after finishing the regular season tied for second with Academy. They edged Academy in a district playoff game to determine the district's second playoff team.

Coach Mike Stenseth's team beat Salado 47-40 Dec. 30 during the Coleman Tournament. Salado led 36-35 after three quarters in that game, before being outscored 12-4 in the final quarter.

Both teams shot 28 percent from the field and 3-of-13 from beyond the three-point arc. Salado had the advantage in rebounds (37-24) but also turnovers (20-13).

"They're a lot like us," Salisbury said. "They have one real quick kid, fast like Katie,

and they have a 6-1 post a lot like (6-foot-3) Leah.

"They also have a 5-11 post who's good on the boards, and another girls who's a streak shooter."

Winter Simmons is Valley Mills' leading scorer, averaging 15 points a game. Tera Smith averages 12 points.

Last year Valley Mills lost to Jarrell in the first round of the playoffs, in overtime.

Salado 77, Florence 38

The Lady Eagles ended the regular season with a 39-point win over the Lady Buffs.

Katie Punchedard and Chrystal Whiteley each scored 17 points. Punchedard scored all 17 in the first half. Melissa Matthews and Leah Davis each added 14 points. Davis added a team-high eight rebounds.

JUNIOR VARSITY

The JV beat Florence 49-24 to capture the district title with a 9-1 record. The lone loss, to Lago Vista, occurred when the squad was split for a tournament, Coach John Black said.

Sarah Buchanan had 15 points, Brooke Simpson 12 and Nikki Jackson 10. Jackson was elevated to the varsity for the playoffs.

Girls basketball would never be the same for young sportswriter covering the game

As the Salado girls basketball team prepares for the playoffs this week, I am reminded of the time I came to respect girls basketball, 16 years ago in Lubbock, Texas.

An article in the sports section of the Austin paper Feb. 11 triggered memories from the 1981-82 basketball season, when I was a twentysomething sportswriter for the *Lubbock Avalanche-Journal*.

Hired by the paper in the summer of '81, I was assigned

Verses and Versus

by John Eubanks

to cover the Lubbock schools during the upcoming school year.

Girls basketball was the last thing I wanted to cover, but it came with the territory. And part of that territory included Monterey High, which had won the Class 5A girls state

basketball title the previous season.

Among the players on that team were sisters Kriss and Kamie Etheridge, who went on to play for the University of Texas.

Kriss graduated from Monterey in '81, leaving younger sister Kamie to lead the '82 team her senior year.

Tim Tasker, the Monterey coach at the time, said last week (in a telephone interview

See Verses, Page 12A

Eagles' slim playoff hopes still alive with two games remaining

by John Eubanks

The Salado Eagles basketball team entered the final week of the regular season with their slim playoff hopes still alive.

The Eagles, 14-16 overall and 6-4 in District 26-2A, played at unbeaten district leader Rogers Feb. 17 (results were unavailable at press time) before ending the regular season at home Feb. 20 against Holland.

Coach Alan Haire said the Eagles, tied for second with Florence, can still qualify for the playoffs even with a loss to Rogers. But they still must beat Holland and hope for Florence to lose to either Holland or Lago Vista. That scenario would force a district playoff game, Haire said.

Salado had a chance to control its destiny Feb. 10, but lost at Florence, 58-49.

"We shot ourselves out of the ball game," he said, noting that his team hit just 10 of 26 two-point shots and three of 22 three-pointers.

Salado did hit an impressive 20 of 27 free throws, but Florence hung on to a 37-29 half-time advantage.

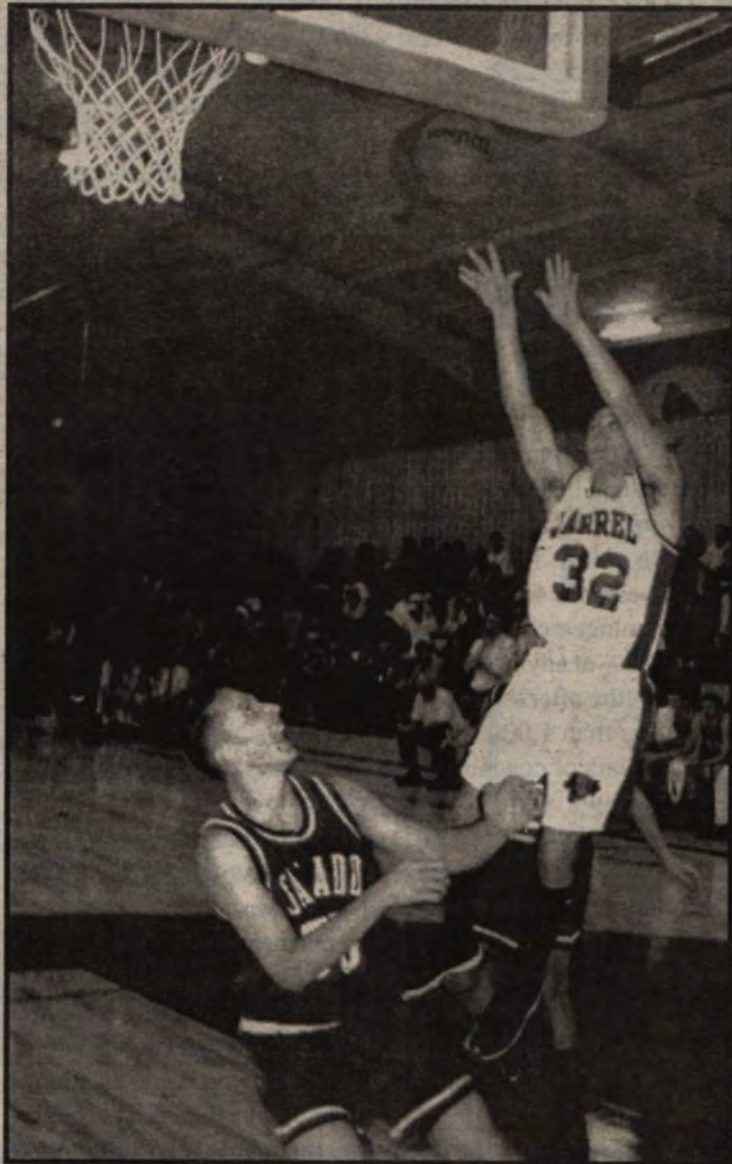
Chris Michna led Salado with 19 points and also had eight rebounds. David Kirk had 14 points and a team-high nine rebounds. Shawn Mitchell added nine points. Mike Gamble chipped in four steals and three assists.

JUNIOR VARSITY

The JV beat Florence 45-31. Troy Smith had 18 points.

Junior high boys match girls, capture district tournament

Like the junior high girls, the seventh and eighth-grade boys captured their portion of the junior high tournament at Jarrell.



(photo by John Eubanks)

Chris Michna watches as a Jarrell player puts up a shot during a recent Salado win.

EIGHTH GRADE

Salado ended the season unbeaten with a 14-0 record under coach Brett Mullins.

The boys defeated Lago Vista in the tournament title game, 35-31.

Jeremy Grimm led the way with 13 points, including three three-pointers.

After drawing a first-round bye, the team opened the tournament with a 44-34 win over Rogers.

John Kirk had 16 points and Grimm had 11.

SEVENTH GRADE

The seventh-graders had to win three games at the tournament for the district championship, and Coach Alan Haire's squad did just that.

The Eagles opened with a 50-14 win over Jarrell. Stephen Fewell had 13 points, nine in the second quarter. Salado scored 22 points that quarter and led 40-18 at halftime.

Salado then beat Florence 35-28 as the Eagles hit a whopping 17 of 25 free throws, including seven of 10 under pressure in the final quarter. Fewell hit nine of 12 free throws and finished with a team-high 13 points.

Salado capped the tournament with a 36-27 win over Hutto. Jarrod Whitfield led the way with 13 points. Fewell and Omar Torres each had six.

Heart of Texas Hospice Foundation
 Thrift store
 601 E. Central Ave. Belton
 254/933-8228
 Shop with us and save \$.
 We have sales everyday!!
 Volunteers Needed
 Mon-Fri 9am-4pm, Sat. 9am-2pm

MARY KAY
 FACE TO FACE BEAUTY SERVICE
 Customized
skin care
 Anne Marie Harwell
 254/947-3159

Harold's Piano
Inventory Reduction Sale
 During February, red tags mark pianos drastically marked down, some at-cost.
 All Models on Sale: Grands, Uprights, Studios, Consoles, Spinets, Players
Salado Plaza, Suite #190
 Exit 285, off I-35
 Salado, TX 76571
 800-859-3644
 254/947-4677

Serving
 Individual Investors since 1871.

Stocks	Tax-free bonds
Mutual funds	CDs
Bonds	Money market funds
Government securities	IRAs

... and much more!

Call or stop by today!

Member SIPC
Michael K. Gunter
 208 E. Central
 Belton
 939-5824

Serving individual investors from more than 3,174 offices nationwide.

Edward Jones

Stewart ★★★★★
MEYER
 The Republican Candidate
 for
Bell County Judge

Why?
 ★ Dedicated to Regional Economic Development
 ★ Supports An Upper-Level Public University in Bell County
 ★ Advocates the Continued Improvement of I-35
 ★ Committed to Unifying Bell County
 ★ Devoted to Creating a Bell County Tourism Office

Meet Stew this week on:

Wednesday District Judge Debate	Bell Co. Courthouse	11am
Thursday Ellis Posey Radio Show	KTEM 1400	10:30am
Friday T.A.B.C.C.	Golden Corral, Temple	11:30am
Saturday Free Clinic Caring Ball	Mayborn Ctr, Temple	6:00 pm

Early Voting Starts- Saturday, February 21

PROFESSOR OF THE STEW MEYER CAMPAIGN. NICHOLEM. TREASURER. 1998 WOLVERINE TRAIL. HARKER HEIGHTS. TEXAS. 76788

CORLEY, HICKS & LEE, P.C.
 Certified Public Accountants
 Waco, Texas

is pleased to announce an
 office location at
831 North Main St.
Salado, Texas 76571

Please call 947-3536
 for appointments

Attention to detail...With your needs in mind

Verses

FROM Page 10A

Gaby's Mill Creek Catering

Serving Our Customers Since 1989
 Delicious Food • Dependable Service • Affordable Price
 254/947-5141

SCOTT & WHITE CLINIC, KILLEEN
 3801 Scott & White Drive
 680-1200

Regular Clinic Hours
Pediatrics
 Monday - Friday 8:30 a.m. - 5:30 p.m.
Family Medicine
 Monday - Friday 8:30 a.m. - 5:00 p.m.

Acute Care Clinic Hours
Pediatrics
 Monday - Friday 5:00 p.m. - 5:30 p.m.
 Saturday 8:30 a.m. - 2:00 p.m.
Family Medicine
 Monday - Friday 4:00 p.m. - 6:30 p.m.
 Saturday & Sunday 8:30 a.m. - 4:00 p.m.

SCOTT & WHITE KILLEEN DENTAL CLINIC
 Hallmark Plaza, Suite A
 4400-3 East Central Texas Expressway
 699-5777

Clinic Hours
 Monday - Friday 8:00 a.m. - 5:00 p.m.

Linda Rountree Pritchard, R.N.
 Registered Massage Therapist

Therapeutic Massage Stress Management

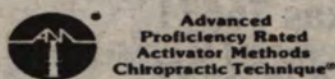
For Appointment, Call
(254) 947-HAND
 Salado Square (4263)

Cheryl L. Lipton, D.C. would like to thank the people of Salado for helping make the past year in practice such a success!



Cheryl Lipton, D.C.
 1982 BHS Graduate
 1987 UMHB Graduate
 1995 PCC Graduate

We look forward to serving you in the future with gentle, comprehensive chiropractic care.



Belton Chiropractic
 325 N. Main St. • Belton
 254/933-2273 (CARE)
 M-W-F 9am-1pm & 3-7pm; Tues. 9am-1pm

from Lubbock) that Kamie was the best player he coached in his 10 years in the profession. "Her sister was the second-best player," he said.

Kamie was certainly the best girls basketball player I had ever seen -- and still is, 16 years later.

Watching her lead the Lady Plainsmen's full-court press and fast-break offense from the point guard position was pure delight.

Tasker had taught the girls to play a type of game that his father, Ralph, had used to wear down opponents as boys coach at Hobbs, N.M. (Tasker said his 78-year-old father is the third-winningest coach in all of basketball -- at any level -- and plans to retire after this season, with more than 1,000 wins in over 50 years of coaching.)

Monterey's style of play certainly made covering girls basketball a lot more enjoyable, considering that some of the other teams I watched were just atrocious.

I can still see Kamie pushing the ball downcourt on a fast break, her pony tail flying, as those eagle eyes of hers scanned the court for the open girl.

Kamie had the most stunning eyes I'd ever seen, and I'm sure they intimidated many an opponent.

Try as she might, though, she couldn't lead the team on another title run to Austin. In fact, Monterey was beaten in the first round of the '82 playoffs by an Amarillo High team that made a run of its own.

Four years later, however, Kamie would lead the UT Lady Longhorns to an undefeated season and a national championship her senior year in '86. Despite averaging just five points a game that year, Kamie was voted the best women's basketball player in

the country.

That's how much the 5-foot-5 point guard meant to her team. Twelve years later, she still holds the UT record for most assists in a game (17) and a career (776).

The aforementioned article from the Austin paper dealt with Kamie's return to Austin as associate head coach for a Kansas State team that was playing Texas Feb. 11. (Texas won handily).

The article by writer Suzanne Halliburton notes that when Kamie was at UT, she was lovingly known as "The Brat" because of her demanding personality around her teammates and her coaches.

UT Coach Jody Conratt (the winningest coach in women's basketball) was quoted as saying, "It definitely was a love-hate relationship. I've never coached anybody as competitive or as driven as Kamie was. If there ever was an extension of a coach on the floor, she was it."

Conratt added, "I didn't know if she ever would be a good coach because she's such a perfectionist. She'll probably say that about me. But she really was a perfectionist."

The article also related a story that when Kamie and Kriss played at Monterey, one sister would get so mad at the other during practice that one would drive home and the other would walk.

If ever there was a person born to play basketball, it was Kamie. She won a state title in high school, a national championship in college and a gold medal for the U.S. team at the 1988 Olympics.

She is an example of what someone can achieve when he or she strives to be the best they can be.

Life, of course, is not as rosy as we sometimes make it out

to be.

In doing this article, I was sadly reminded of a basketball player at Monterey who never achieved her full potential.

I couldn't recall her name until Tasker reminded me, but I will always remember how incredibly beautiful she was. I'm not exaggerating when I tell you that her blond hair and pale complexion -- along with her calm demeanor -- made her appear angelic.

Tasker reminded me that the young lady -- a sophomore by the name of Mary Jane Snodgrass -- had made some key free throws to help Monterey win a first-round playoff game in 1983.

I can still see her in the post-game huddle, her face flushed with excitement, as Tasker reminded the girls to focus on the next opponent.

That opponent, a team from El Paso, would end Monterey's season the next week, in the second round of the playoffs.

I don't remember much from that game except for spending a lonely night in a motel in Monahans, where the game was played, eating a cold pizza I had ordered before the game.

I would not cover another girls basketball team again, until the 1989-90 school year. By then, the sport had dramatically improved.

But those two years covering the Monterey Lady Plainsmen gave me an appreciation for girls basketball and left a lasting impression.

The death of Mary Jane Snodgrass at the end of the '83 school year left an impression as well.

Killed in an accident involving a drunken driver, the girl with the angelic face would remain forever young in the minds of those who knew her.

But, oh, what if ...?

CARPET

- ◆ Hard Wood
- ◆ Ceramic Tile
- ◆ Sheet Vinyl
- ◆ Blinds
- ◆ Shutters
- ◆ Wallpaper

Blinds up to 75% off Fire Windows & Shutters
 Great Service, Great Prices

East Access Rd. I-35

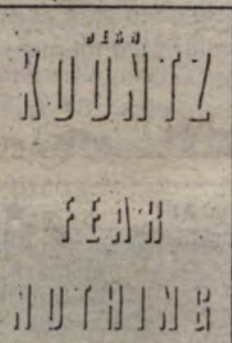
North of Harper Talasek
(254) 947-0048

Free Estimates

Open 9 a.m.-5 p.m. Mon-Fri
 Sat 9 a.m.-12 Noon



Salado Floors & Walls
 Your Hometown Decorating Center



Fear Nothing Dean Koontz
 Christopher Snow is different from all the other residents of Moonlight Bay. For Christopher has made a strange peace with a very rare genetic disorder shared by only 1,000 other Americans, a disorder that leaves him extremely vulnerable to the light. It is only at night that he is truly free. And then he witnesses a murder in the night -- a murder only he can solve. Available at:



405 Main • Salado • 947-3866

Home & Garden

Show set Feb. 21-22

The Home & Garden Show for Central Texas will this year feature the largest assortment of exhibitors in the 15-year history of the show. About 140 exhibitors will be displaying their products and services to the some 10,000 Central Texans that are expected to attend this year's event. The 1998 Home & Garden Show is expected to attract attendees from over 95 area cities and communities.

The Home & Garden Show will be held at the Bell County Expo Center in Belton 10 a.m. until 6 p.m. Feb. 21 and 11 a.m.-5 p.m. Feb. 22. Admission will be \$4 per person. Children 12 and under will be admitted free.

A vast array of products and services will be exhibited in the show. These will include energy efficient and healthy items for the home, appliances, art and other decorative items, new trucks, bath specialties, brick and tile products, cabinets and cabinet hardware, and decorative and privacy fencing products.

An assortment of floor coverings will be on display, including Wilsonart International's line of laminated flooring in addition to tile, wood flooring, carpet, vinyl and rugs. Windows and glass enclosures, doors, lighting wares, concrete products, fireplaces and stoves, shutters and blinds, and other specialty household items will also be featured.

The 1998 Home & Garden Show will feature expanded displays of pools, spas and hot tubs in the Exposition Hall at the Bell County Expo Center. Five pool and spa companies will be displaying 5,000 sq. ft. of the latest in pools, spas and hot tubs.

Home sporting and recreational products and services on display at the show will include billiards, sport courts and

resort accommodations. Also there will be companies exhibiting television, satellite, cable and home theater products and services. Home security, water, tools, and other specialty items will be on display.

A number of builders and remodelers will be on hand to answer questions concerning home building and the home building industry. Remodelers will be showing and demonstrating their products and services to show attendees. These will include kitchen products, including appliances, siding products and services, windows and patio covers, air conditioning and heating products, security systems, and numerous other specialty products and services. Developers will be promoting building lots that are available in the market. In addition, Realtors will be available to explain their services and to show homes that are for sale in the area.

Service industry exhibitors that will be at the show will include banks and mortgage companies, insurance, real estate, and design and architectural services.

Other companies in the show will be exhibiting lawn and garden products, including lawn mowers, sprinkler systems and other garden specialties. In addition, several lawn irrigation companies will be exhibiting the latest innovations and products in lawn watering.

Live food preparation demonstrations will also be held at the show. Plus, personal care and health related items will be available for demonstration and for sale.

Many exhibitors will have drawings in their booths for door prizes throughout both days of the show, plus drawings for prizes at the conclusion of the show on Sunday evening. You do not have to be present to win.

EXPO '98

The Home & Garden Show For Central Texas



BELL COUNTY EXPO CENTER

UNDER THE BIG EXPO DOME & ADJACENT ASSEMBLY HALL & EXPOSITION BUILDINGS

— Interstate Highway 35 at Belton, Texas —

Saturday, Feb. 21, 10 am - 6 pm ■ Sunday, Feb. 22, 11 am - 5 pm

- ◆ 140 companies representing the Home and Garden Industry
- ◆ Seminars on Building & Remodeling Topics free with admission
- ◆ Free seminars on Garden & Landscaping Topics both days
- ◆ Door prize drawings from exhibitors throughout each day
- ◆ \$4.00 single-day or \$6.00 two-day admission — 12 and under free

For information call 254-773-0445

COUPON

GOOD FOR UP TO SIX ADMISSIONS AT THE EXPO '98 - HOME & GARDEN SHOW FOR

50¢ OFF

THE REGULAR ADMISSION PRICE. GOOD SAT. OR SUN. • FEB. 21 OR 22

COUPON

TOWNE INTERIORS & DESIGNS

Everything you want for your home or office... furniture, rugs, lamps, accessories, floor coverings, and window treatments. Complete your look with our unique collections.

Visit us today and let one of our designers help create the look that's right for you.



2100 Trimmer Rd.
Suite #102
Killeen, TX
At Liberty Square
(254) 690-4900

Brenda Ray - Owner
Licensed Interior Designer

Carolyn Riley
Designer

Killeen True Value.
Help Is Just Around The Corner

Diazinon 5% Controls pests
or Dursban 1% Granules
\$4.98 10 lb. bag

Fire Ant Killer
with Dursban kills fire ant queen deep in the mound
\$2.99 3.5 lb. bag

We Also...
• Cut Keys • Cut & Thread Pipe
• Have Home Gas Delivery
• Refill BBQ Grill Cylinders
• Have Front Row Parking & Quick Check Out

KILLEEN PROPANE AND HARDWARE
3905 E. (Bus. 190) Vet. Mem. Blvd. • 699-3161
"A Real Hardware Store"

BURGER KING

Open 6a.m.-10 p.m.
Drive-thru

- Breakfast Menu
- Kid's Meals
- Shakes
- Burger Meals

254-947-8060
I-35, exit 284

FSB First State Bank

Lobby Hours:
Monday - Thursday 9 a.m.-3p.m.
Friday 9 a.m.-4 p.m.

Drive-in:
Monday - Thursday 7:30 a.m.-4 p.m.
Friday 7:30 a.m.-6 p.m.
SATURDAY 9 a.m.-12 noon

"Where full banking services are traditional"
Main St. at Thomas Arnold Rd. Salado
254/947-5852 Member FDIC

BUTCH AND DOUGIE by ALEX HOWELL



R.F.D. by MIKE MARLAND



BRINGING UP FATHER
by Frank Johnson



GEORGE by MARK SZORADY



MAMA'S BOYZ by JERRY CRAFT



THE SPATS by JEFF PICKERING



OUT ON A LIMB by GARY KOPERVAS



Samm's Family Restaurant

Salado Plaza Shopping Center 947-0015
Open Monday-Friday
11 to 3 & 5 to 8:30 for daily buffet
Join us for Coffee 8:30-10:30 am weekdays

Milton Kirchmeier's



State Inspections
Lube & Oil Change
A/C Service & Repair
Transmission Service

Auto Excellence

TIRES, SHOCKS, STRUTS
(254) 947-5042
East side of IH-35, exit 285

PIDDLERS HILL SUPPLY

"Your Friendly Country Hardware Store"
Pipes • Fittings • Tools • Bolts • Irrigation
Official Dealer
RANCH HAND EQUIPMENT East Loop 121 Belton, TX
Between I-35 & Little River Rd. 817-939-8322

FENCES BY FABB

CUSTOM WOOD FENCING • CHAIN LINK • SPLIT RAIL
PATIO COVERS • DECKS • REPAIRS • WARRANTY
FINANCING AVAILABLE • RESIDENTIAL - COMMERCIAL

SATISFACTION GUARANTEED • TRAVIS FARR, OWNER

1-800-780-5355 Belton, TX **750-2775**



Peterek's Country Meats

& Czech Country Sausage

ELMER KING ROAD • P.O. Box 1353
BELTON, TEXAS 76513

(254) 939-8555 • (800) 965-8555

OPEN 7 DAYS A WEEK FOR DEER SEASON

Barbecue Catering

Prime Rib • Choice Beef • Czech Sausage

CHOICE BEEF HALVES & QUARTERS

• DEER PROCESSING • BARBECUE CATERING

• REAL BEEF JERKY • WE CATER ANYTIME, ANYWHERE



Compass Bank

Where There's Compass, There's A Way.

LOBBY

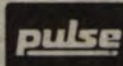
Mon-Thurs 9 am- 3 pm, Fri. 9 am-6 pm

DRIVE-THRU

Mon-Fri 7:30 am-6 pm

700 N. Main St. Salado

(254) 947-5051



24 Hours A Day

XPRESS BANKING 933-4200
All Compass Banks are members FDIC



1997-98 Seventh-grade boys A

(Top row, from left) Coach Alan Haire, Brad Austin, Francious Ruiz, Kyle Salisbury, Cody Quirk, Evan Durham, Stephen Fewell. (Bottom row, from left) Isaac Berumen, Charlie Gantenbein, Lane Wolf, Roland Buckley, Omar Torres, Bo Bartlett.



1997-98 Seventh-grade boys B

(Top row, from left) Coach Alan Haire, Brian Johnston, Devin Wognig, Steve Hayes, Josh Dunn, David Faber, Brian Stofle, Adam Coffman. (Bottom row, from left) Josh Rhoades, Garod Gunter, Cody Mabry, Evan Gillespie, Josh Griffin, Kevin Stanley, Jerod Rogers, Jamie McGregor.

Congratulations to Salado Junior High Teams, which swept the District Tournament!!

1997-98 SHS Basketball Schedule

Date	Opponent	Site	Girls Teams	Boys Teams	1st Game Time
11/18	Lorena	Here	JVBA, V		5 p.m.
11/18	At Valley Mills			JV, V	5 p.m.
11/22	Crawford	There	JVBA, V		1 p.m.
11/22	Itasca	There		9, JV, V	1 p.m.
11/24	McGregor	Here	JVBA, V		5 p.m.
11/24	Waco Vanguard	There		9, JV, V	5 p.m.
11/25	Cameron	There	JVBA, V		5 p.m.
11/25	Crawford	Here		JV, V	5 p.m.
12/2	Waco Robinson	Here	JVBA, V		5 p.m.
12/2	Bruceville-Eddy	There		9, JV, V	5 p.m.
12/4-6	Academy Tournament		V	9, JV, V	TBA
12/9	Rogers*	There	JV, V		5 p.m.
12/9	Academy	Here		9, JV, V	5 p.m.
12/11-13	Salado Tournament		V	V	TBA
12/12-13	Rosebud Tournament		JVBA		TBA
12/13	Troy Tournament			9, JV	TBA
12/15	Killeen	Here		9, JV, V	5 p.m.
12/16	Holland*	Here	JV, V		5 p.m.
12/19	Liberty Hill	There	JV, V		TBA
12/19	Milano	Here		9, JV, V	5 p.m.
12/29-30	Coleman Tournament		V		TBA
12/29-31	Hawley Tournament			V	TBA
1/2	Wimberley	There	JVBA, V	9, JV, V	2 p.m.
1/6	Lago Vista*	There	JV, V	JV, V	5 p.m.
1/9	Jarrell*	Here	V	9, JV, V	4 p.m.
1/13	Hutto*	There	JV, V	JV, V	5 p.m.
1/15	At Cameron			9	6 p.m.
1/16	Florence*	Here	V	JV, V	4 p.m.
1/17	Holland JV Tournament		JV	JV	TBA
1/20	Calvert	Here	V	JV, V	5 p.m.
1/23	Rogers*	Here	V	9, JV, V	4 p.m.
1/27	Holland*	There	JV, V	JV, V	5 p.m.
1/29	Academy			9	6 p.m.
1/30	Lago Vista*	Here	V	JV, V	5 p.m.
2/3	Jarrell*	There	JV, V	9, JV, V	4 p.m.
2/6	Hutto*	Here	V	JV, V	5 p.m.
2/10	Florence*	There	JV, V	9, JV, V	4 p.m.
2/13	Thrall**	Here	JV, V		5 p.m.
2/17	*Rogers	There		9, JV, V	5 p.m.
2/20	*Holland	Here		JV, V	5 p.m.

* District Game

** Tentative Game

THE HISTORIC STAGECOACH INN
 We're "Pulling" For the Eagles
 Superb Dining
 Delightful Motel
 Salado, Texas 254-947-5111

DQ
 Let's Win!!
Salado Dairy Queen
 Thomas Arnold Rd. & I-35 947-5406
 Open Daily and late on home games

Go Salado!!
Centrovision
 Cable TV Service for Central Texas
 Serving Salado • Little River-Academy • Morgan's Point
 • Lake Belton • Moody • Rogers • Troy
 773-1163 8 E. Barton Ave. Temple

Players of the Week

Drew Oldham
Senior Forward

Lauren Quirk
Sophomore Post

Salado Village Voice
 P.O. Box 587 Salado, TX 76571
 (254) 947-5321 FAX 254/947-9479
 213 Mill Creek Dr. #125

The Eagles are "First" With Us!
First State Bank
 Main St. & Thomas Arnold
 947-5852
 Member FDIC

Way to Go Salado Eagles
Compass Bank
 "Where There's Compass, There's a Way."
 Main St. Salado 947-5051
 Member FDIC

Salado's "Home Team" Backs The Eagles!!

Bill Bartlett
 N. Main St. Salado 254/947-5050

Backing the Eagles to Victory!
EXXON
 Rely on the Tiger
 Open 24 Hours 254-947-5660
BURGER KING
 Open 6a.m. - 10 p.m. 254-947-8060 • Drive-thru
 15 S. Stagecoach Rd.

Mail this application to: Golf, PO Box 312, Salado, Tx 76571

Name _____
 Address _____
 City _____ Zip _____ Phone _____
 Foursome _____ & _____
 _____ & _____

Number of players: Amateurs _____ Club Pros _____ Tour Pros _____
 Check \$ _____ for \$60.00 per person in enclosed.

If you or your company are interested in sponsoring a \$60.00 hole contact Denver Mills at 1-254-947-9205. Tablerock Festival of Salado, Inc. is a 501(c)(3) non-profit organization. Donations are tax-deductible to the extent allowed by federal law.

\$5,000 Cash Hole-In-One Golf Tournament to benefit Tablerock

A \$5,000 Cash Hole-In-One Golf Tournament will be held Mar. 6 to benefit Tablerock Festival of Salado.

The tournament will be held at the world class, Robert Trent Jones II Golf Course at Mill Creek Country Club.

The \$60 entry fee covers green fees, cart, lunch and prizes. Refreshments will be served at the 19th hole. Those participating in the Four Per-

son Scramble may choose their own foursome or placement can be made by the organizers. Golfers' home course handicaps will be used. The award ceremony will follow immediately after the tournament.

Grand prize will be \$5,000 cash prize for a Hole-In-One at Hole #16 plus \$5,000 to the Tablerock Endowment Fund in the winner's name. Other

prizes will be a Del Lago Golf Package - Hole-In-One at Hole #12; Sharp CamCorder-Hole-In-One at Hole #6; Tour Edge Irons-Hole-In-One at Hole #2. Prizes for longest drive, closest to the hole, low net and fewest putts will be awarded.

Contact Denver Mills at 243-947-9205 or Jack Folsom at 254-778-1313 for more information.

Salado Youth Basketball Association

Salado Youth Basketball Association
1st-2nd Grade Girls/Boys Wildcats 17, Bulls 13
 Wildcats: McLaughlin 6, Goodnight and Schilling 4, Williams 2, San Miguel 1.
Bulls: Wideman 7, Whitmire 4, Haire 2.
Fireballs 18, Longhorns 12
 Fireballs: Grigsby 10, Nye 6, Fritsch 2. Longhorns: Rosenau 8, Jackson and Foster 2 each.
3rd-4th Grade Girls
Ladybugs 8, Wildcats 6
 Wildcats: Whitmire, Harvell, Washburn, 2 each. Ladybugs: Ervi, Wright and Goodrum, 2 each.
Hurricanes 12, Ladybugs 10 (OT)

Ladybugs: Goodrum, Wells, Duel, Ervi, Wright, 2 each.
Hurricanes: Bartlett 14, Dunlap 4, Eddy and Dunnahoo, 2 each.
Boys
Crusaders 30, Longhorns 20
 Crusaders: Marek 16, Rodriguez 12, Sniggs 2. Longhorns: Tumey, Peschal, Dowell, 6 each. Torres 2.
Raptors 29, Blue Devils 12
 Blue Devils: Quick, Radebaugh, Corbitt, Wilhite, Spinks, Rosenvak, 2 each.
 Raptors: Whitfield 12, Wilson 9, Soberad 4, Pruett, Schwake, Gobin, 2 each.
Rockets 30, Longhorns 28
 Rockets: Eckstrum 10, Quirk and Askins, 8 each; Bates 4. Longhorns: Torres 12, Tumey 8, Dowell 6, Peschal 2.

5th-6th Grade Girls
Cadets 12, Mean Green 10
 Cadets: Houston 2, Buchanan 4, Oaks 6. Mean Green: Goodnight 2, Blodgett 3, Tumey 5.
Cadets 13, Hot Shots 9
 Hot Shots: York 9. Cadets: Buchanan and McLaughlin 4, Oaks and Houston 2, L. Wilson 1.
Boys
Spurs 21, Celtics 12
 Celtics: Mewhinney 8, Shumate 4. Spurs: Bates 9, Everett 6, Hennig 4, Soberad 2.
Bulls 24, Celtics 18
 Celtics: Mewhinney 9, Dunn 5, Shumate 4. Bulls: Marsh and Wright 8, Clements 6, Harvell 2.

WHY PAY MORE? COMPARE OUR LOW PRICES
 The Best Service in Town Since 1980

10 MINUTE OIL CHANGE
\$16.95* OIL, LUBE & FILTER
 Add \$1 for Gov. Disposal Surcharge. *with this coupon. Expires 3-25-98
 All other oils \$1.00 Off towards regular price on full service oil change of your choice with this coupon.

PRICE INCLUDES
 Up to 5 qts. Pennzoil 10W oil or Quaker State 10W oil, new oil filter, chassis lubrication, check and fill all major fluid levels, air tires, check & clean most air filters, visually inspect belts, hoses, etc., attach door sticker & window static sticker AND reminder card mailed - in 10 minutes or less at no extra charge for most vehicles. **NO APPOINTMENT NECESSARY.**

THE OIL EXCHANGE
 Since 1980 • All Major Brands Oil Available
 57th & Scott Blvd. Temple • 778-5195
 Mon-Fri. 8:00-5:30, Sat. 8:00-5:00

ALTON D. THIELE

Certified Public Accountant

312 E. Central Ave. P.O. Box 808
 Belton, Tx 254-939-0701
 e-mail athiele@vwm.com 800-772-7093

Serving Salado and Central Texas Since 1979 with year-round service in preparation of Income Tax Returns.

- Individuals • Partnerships
- Corporations • Trusts and Estates
- Non-Profit Organizations
- Electronic Filing

OTHER SERVICES

- Complete Accounting & Bookkeeping Service
- Auditing • Personal or Business Financial Statements
- Data Processing Services & Consulting
- Financial Planning

TAX SEASON HOURS
 M-F 8:30-12:00, 1:00-6:00, Sat 9-1
 Other times by appointment

NEW CLIENTS WELCOME

VETERANS NOTIFICATION

BURIAL SPACE AT NO COST ABSOLUTELY NO OBLIGATION

Many veterans are not aware of their benefits and are spending needless dollars for themselves and family on programs already funded by the veterans administration.

Because of the problems and expense veterans encounter using distant national cemeteries and through an allowance designated for veterans using local cemeteries, we are assigning burial space at Temple Garden of Memories at no cost to the veteran. You must register in advance and have proof of honorable service. Space is limited and will be assigned on a priority basis according to those who apply first.

ADVANTAGES

1. BURIAL SPACE AT NO COST FOR THE HONORABLY DISCHARGED VETERAN Gives the veteran a chance to save on the cost of his or her lot locally if he or she has the foresight to act now.
2. By making your reservation NOW, you or your loved ones will be spared the task of having to make a hasty and MUCH more expensive cemetery choice at the time of bereavement

(254) 742-0441
IMPORTANT... ACT NOW!
 We will provide complete details without any obligation on your part!

VETERANS HONOR SECTION
TEMPLE GARDEN OF MEMORIES

PLEASE SEND MY VETERANS ELIGIBILITY CERTIFICATE and full information about your Special Offer To Veterans and ExServicemen.

I am a Veteran _____ Serial No. _____ Discharge Date _____
 Name _____
 Address _____ Ph. # _____
 Employed By _____
 Retired _____ D.O.B. _____
 Best time to be reached _____
 Married _____ No. of minor children _____
 Do you own cemetery property? _____ (if yes, where?) _____

TEMPLE GARDEN OF MEMORIES
 8156 NORTH IH-35 TEMPLE, TX 76501-6625

RE-ELECT
REPUBLICAN
SHELIA ★★★★★
NORMAN
District Clerk



DEDICATED TO DOING THE JOB RIGHT!

Since being elected in 1994, Shelia has helped to:

- Streamline the procedures, policies & manuals of the District Clerk's office
- Develop an Automated Child Support Information System
- Install Personal Computers for office staff, increasing productivity and efficiency

• QUALIFIED • DEDICATED • EXPERIENCED

Pd. Pol. Adv. by Shelia Norman Campaign, Charlotte Locklin, Treasurer, P.O. Box 973, Belton, Texas 76513

SHS captures another Sweepstakes trophy

The Salado High School Academic Team won the Sweepstakes Trophy at the Feb. 14 Waco Connally Academic Tournament. This is the second Sweepstakes trophy SHS has won this year.

Salado scored 238 points to capture the Sweepstakes Trophy over 35 schools including 5A schools from Temple and Killeen. Waco Midway finished second with 208 points.

The Waco Connally Academic Tournament had 28 SHS students competing.

Individual results are as follows:

Poetry Interpretation-Matthew Fiebig 5th.

Computer Applications: Beau Wallace 4th, Kendall Anderson 6th.

Spelling & Vocabulary: Ashley Norman 2nd.

Literary Criticism: Kristin Cawthon 2nd, Julie Gamble 3rd and Laura Schatte 5th.

Science: Chris Michna 2nd, Paul Lucas 3rd, Shane Rigsby 4th and Nicholas Smith 5th. Top Chemistry Score was Chris Michna.

Science Team: Michna, Lucas, and Rigsby 1st.

Calculator 9th & 10th grade: Greg Dachs 4th.

Calculator 11th & 12th grade: Chad Kiphart 2nd, John Woolard 3rd and Barry Hodge 5th.

Number Sense 9th & 10th grade: Adrienne Akins 2nd, Chris Ray 3rd and Matt Gunter

5th. Number Sense 11 & 12 grade: Barry Hodge 1st, Shane Rigsby 4th and Michelle Lenis 5th.

Number Sense Team: Hodge Rigsby and Lenis 1st.

Mathematics: Barry Hodge 1st, Michelle Lenis 2nd, Ashley Norman 4th.

Mathematics Team: Hodge, Lenis, Norman 1st.

Editors' note: Congratulations to these Salado students for job well done!

Liz Boyd, Michael Daniel earn A&M academic honor

Texas A&M University has named its honor students for the 1997 fall semester, recognizing several thousand students for outstanding academic performance.

Among those recognized on the Distinguished Student List

were freshman Elizabeth Amy Boyd and junior Michael David Daniel of Salado.

The Distinguished Student recognizes those who earned a 3.25 to 3.75 GPR while taking at least 15 hours.

MOUNTAIN MARY'S WESTERN CONNECTION
I-35, EXIT 285 SALADO
NEW LINE OF CARVED BUFFALO BONE JEWELRY

LASTOVICA Fine Jewelers, Inc.
"Known for Service"
Prompt In-Store Jewelry Repairs
Diamond Sales Custom Casting Diamond Appraisal
Watch Repair Diamond Setting Jewelry Repair
New Location: 1202 S. 31st St. & Ave. L • Temple 773-5772

HERBALIFE
Independent Distributor
Ginger Chick
5525 West Amity Road
Salado, Texas 76571
phone/fax: 254-947-8080
888-586-9942

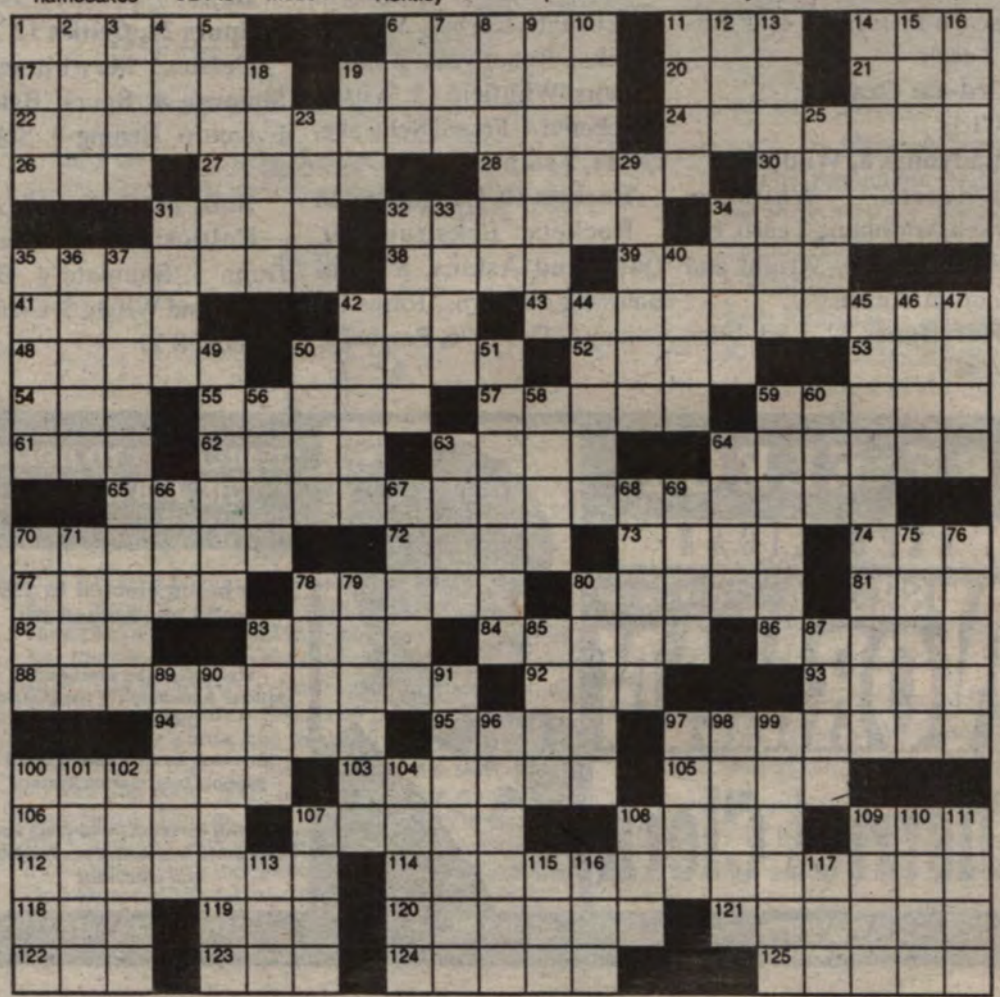
EXXON Travel Mart
Convenience Store
947-5660 I-35, exit 284
Open 24 Hours
• COLD DRINKS • SNACKS
• CLEAN RESTROOMS
ATM INSIDE STORE
TEXAS LOTTERY

Hand out your business card to over 4,500 potential customers every week. An ad this size costs as little as \$10 per issue (three month contract required) For details, call
SALADO Village Voice
254/947-5321

"Share My Vision"
JON BURROWS
Republican For Bell County Judge
Pol. Adv., Jon Burrows Campaign, P.O. Box 1260, Temple, Texas 76503

Super Crossword

- | | | | | | |
|----------------------------|------------------------------|-----------------------------|-------------------------------------|----------------------------------|---------------------------|
| ACROSS | 50 Myanmar, formerly | 93 Choir member | 4 That woman | 40 "Say no more!" | Naked —" |
| 1 "— Man" (78 tune) | 52 Hwys. | 94 Tremendous bargain | 5 Astoria's locale | 42 Kind of | 79 Vision-related |
| 6 Fish hooks | 53 He was liked in '56 | 95 Pain grain? | 6 Fathom | 44 Undo an error | 80 Yodel's exclamation |
| 11 Comment from a crank | 54 Craftiness | 97 Connecticut city | 7 Fine, volcanic lava | 45 Gatsby's creator | 83 Victim |
| 14 Wheel part | 55 Kapitan's command | 100 Big Band name | 8 Prohibited | 46 Steinbeck figure | 85 Shopper's Shangri-la |
| 17 Leading men? | 57 Urban atmosphere: colloq. | 103 In a dull manner | 9 Chilling site? | 47 Cleave | 87 Reagan Cabinet member |
| 19 Popular vacation spot | 59 Protest tactic | 105 Designer Cassini | 10 Eydie's man | 49 Understated | 89 Ruhr Valley city |
| 20 Winter hazard | 61 Author Wallace | 106 Paint pigment | 11 Clinton or Cosby | 50 Wild hog | 90 Likely to last? |
| 21 — Khan | 62 Lingerie items | 107 Actress Nelson | 12 "— Ventura: Pet Detective" | 51 "Top Hat" star | 91 Connoisseur |
| 22 Start of a remark | 63 Singer Redding | 108 Film — | 13 Geometric figure | 56 Had kittens? | 96 Tennyson's tales |
| 24 Dictionary | 64 Bowled over | 109 — Moines | 14 Indy entry | 58 Red spider, for one | 97 Disposition |
| 26 Asian holiday | 65 Part 3 of remark | 112 Author Flannery | 15 Actress Massey | 59 Shows one's teeth | 98 Inventor Howe |
| 27 Crossword puzzle part | 70 Away from home | 114 End of remark | 16 Feathered yakkars | 60 Publisher Ballantine | 99 Couch potato's woes |
| 28 Cut at an angle | 72 Bjorn's opponent | 118 "Sister Act" extra | 18 Beetle | 63 Make eyes at | 100 "Lorna —" |
| 30 Basketball venue | 73 Spoken | 119 Cow | 19 Silly Skelton | 64 Jezebel's husband | 101 Take place |
| 31 Walt Kelly's possum | 74 Last stop | 120 Ms. Francis | 23 Run amok | 66 Calif. neighbor | 102 Swiss river |
| 32 Jacket style | 77 Pipeline part | 121 Shape up | 25 Jeremy of "House of the Spirits" | 67 Suave actor David | 104 Punjab prince |
| 34 Greek gathering places | 80 Loon's relative | 122 Palindromic preposition | 29 Imitation | 68 Major artery | 107 Genealogy diagram |
| 35 British title | 81 Salty spread | 123 Songstress Brenda | 31 Battery part | 69 Ontario native | 108 Vane dir. |
| 38 Big vein | 82 First lady? | 124 "Siddhartha" author | 32 Divulge, with "out" | 70 Parisian preposition | 109 Con |
| 39 "— Bocanegra" (opera) | 83 Wear out the carpet | 125 insomnia cure? | 33 Corn Belt soil | 71 Broad bean | 110 Ferrara first family |
| 41 Way off base? | 84 Act badly? | DOWN | 34 "— & Andrew" ('93 film) | 75 Nick of "The Prince of Tides" | 111 Defeat by a knockout |
| 42 Sine — non | 85 "— We Dance?" | 1 AKC reject | 35 Trite | 76 Actor Alain | 113 Be in debt |
| 43 Part 2 of remark | 88 Part 4 of remark | 2 Tennis great Arthur | 36 Wise to pooch | 78 Goya's "The | 115 Si or oul |
| 48 Archibald and namesakes | 92 Pie — mode | 3 Atkins or Huntley | | | 116 Actress Sue — Langdon |
| | | | | | 117 Guy's counterpart |



5 star program

Lions to address membership decline

by John Eubanks

A Lions Club official told the Salado Lions Club recently that declining membership in the world's largest service club -- Lions International -- is a concern shared by similar groups.

John Southard, district governor for Salado's District 2X-3, addressed the Lions at their Feb. 11 luncheon at Mill Creek Country Club.

"How serious is our membership problem?" Southard said. "Rotary has it, churches have it, the Masonic Lodge, Knights of Columbus. They have a tendency not to appeal to younger people."

Southard said the average age of Lions is 56. As membership grows older, so do the number of member deaths -- approximately 30 each year.

Although Texas has more clubs than any other state, the number of Lions statewide has declined from about 45,000 in the mid-1980s to 34,800 today.

In Salado's district, membership since 1989-90 has dropped from 2,300 to 2,180.

While growth declines among Lions in North America, membership steadily grows in such places as Asia, the Middle East and Europe.

With the fall of the Berlin Wall and the virtual end of the Cold War, Lionism has expanded to parts of Europe that once were under Communist rule. Macedonia, once part of Yugoslavia, is such a place.

"We are also in Bosnia, Poland, Czechoslovakia and



(photo by John Eubanks)

John Southard (left), district governor for Lions District 2X-3, poses with Eldon Miller, Salado Lions Club 1st vice president.

Moscow," Southard said. "Now that Hong Kong is part of China, I guess you could say we are in the Republic of China."

If Lions Clubs in this country don't appeal to younger people, Southard said the leadership positions in the Lions hierarchy will eventually shift overseas.

To counteract declining membership in this country, a "five-star" program has been implemented.

The five areas include: a goal of 10 percent membership from June 30, 1997, to July 1 this year; retaining members and "closing the door on (member) drops," Southard said; an induction ceremony for new members which stresses what Lionism is about; historical orientation, focusing on past deeds by individual clubs; and publicity, spreading the word about each club.

Getting the word out on a club project would be an ex-

ample of the last goal, Southard said.

Most clubs have less than 30 members and are not involved in major projects like the one currently under way in Killeen to build a "massive athletic complex" south of town.

"It doesn't have to be that big," Southard said.

Southard also said that Salado's District 2X-3 has pledged to raise \$43,000 to upgrade the Texas Lions Camp for crippled children in Kerrville.

Southard said he was confident that Salado Lions would donate their share to the fund. He said Salado's club is "one of the greatest and strongest clubs in the district."

WOMAC PLACES 1st IN POSTER CONTEST

Salado junior high student Robyn Womac won the district competition in the Lions International Peace Poster Contest. She won a \$1,000 check.



(photo by Marilyn Fleischer)

Teresa Tolbert serves tea during a high tea in preparation for the Quilt Show in April. The tea was held at the Halley House on Main St. and the ladies of Salado dressed up and wore their "high hats" while having a good time.

Money to Loan at Low Rates!



Call
Tommy Wallace
(254) 554-4328



Killeen • Harker Heights • Copperas Cove



Banking at Your Convenience!™

Richard A. Crow, CPA

Serving Salado and Central Texas Since 1992

Tax Preparation, Accounting and Investment Advisory Services

Accepting Appointments
#1 Post Oak Center, Salado
254/947-1040
800-569-6078

Securities offered through FFP Securities, Inc.
Member NASD SIPC
Investment Advisory Services through FFP Advisory Services, Inc.

BoTangles Styling Salon

- Haircuts • Blow Dry Styles
- Shampoo Sets • Permanents
- Dimensional Hair Coloring
- Manicures • Pedicures
- Acrylic Nails

Schanna Culp
Stylist/Nail Tech

Iris Dodge
Owner/Stylist

213 Mill Creek Dr., Ste. #165 254/947-4747



Gordon G. Adams

for District Judge
Republican Primary

Personal

- Born and raised in Bell County
- Wife - Barbara Adams, married 25 years
- Son - Michael, sophomore at Texas A&M
- Member, First Baptist Church of Killeen

Community Involvement

- Past President, Bell Co. Board of Education
- Past President, Killeen ISD Board of Trustees (Trustee 1984-1993)
- Former Mayor Pro-Tem, City of Killeen
- Past Director, Bell Co. Rehabilitation Center
- Past Director, Legal Aid Society of Central Texas
- Past Director, Great Killeen Chamber of Commerce

Fine Design

- Design Service -- Interior/Exterior
- Renovations • Specialty Painting
- ASID; AIA upon request

Mary Helen Schreiner Leah Rae Strmiska
(254) 947-8134 (512) 859-2763

Village Pharmacy
of Salado

Mon-Fri 8:30am-6pm, Sat 9am-2pm
213 Mill Creek Dr., Ste. 155
947-3185 FAX 947-3187

Deanna's Floral Creations
213 Mill Creek Dr., #160
(Next to IGA Village Foods)
Salado, TX 76571
254-947-0222 • 1-800-947-0502

Credit Cards Accepted • Telefloral Wire Service
Delivery to Salado, Bartlett, Jarrell, Belton and Temple

ALL TUNE and LUBE <small>BRAKES and MOPE</small>	ATL MOTOR MAX <small>ENGINE INSTALLATION CENTERS</small>	<small>• FREE Brake Inspection • 12 Month/12,000 Mile Nationalwide Warranty • Delivery Service Available To From Home or Office</small>
ALL TUNE TRANSMISSIONS	WE FEATURE <small>People Who Know Use Valvoline</small>	

Total Car Care: From Oil & Lube to Brakes to Computerized Diagnostics to Complete Engine & Transmission Repair/Replacement and Installation! Call for Details!
ELECTRICAL • FUEL INJECTION SERVICE • HEATERS • TIRES • TIMING BELTS • TUNE-UPS

If It's On Your Car...We Can Fix It!

2326 SO. 57th STREET
742-0707

We Meet or Beat All Competitors Advertised Prices!
Call or Come, By for Details!

Locally owned and operated

Hours: Mon-Sat 7am-7pm

APPLY TODAY FOR THE ATL CREDIT CARD
60 Days Same As Cash W.A.C.

Member of Better Business Bureau and Chamber of Commerce

Curry

FROM Page 1A

185,000 miles on the truck. "I sent a letter to Ford about that truck and how good it is, but I haven't heard anything back from them," he said with a laugh adding that Salado would make a good location for a Ford truck commercial since just about everyone drives them.

Riding along to most of the shows is Salado High School agriculture teacher Randy Kelder. "He has helped me so much this year," Raina said of Kelder. "The school and Mr. Agnew (high school principal) have also supported us in so many ways this year."

Raina leaves early this week for the San Antonio Livestock Show, followed by a trip to Rosenberg in hopes of qualifying for the Houston Livestock Show.

"There are over 1,600 lambs at the Rosenberg show, about 300 will qualify from there to the Houston Show," she said.

Weekend travel is only part of the rigorous schedule Raina keeps in raising lambs and pigs. This year, she has raised 10 lambs and two pigs. She has shown animals since she was in third grade, beginning in 4-H and moving on to Junior FFA in junior high school and FFA as a high school freshman.

Every morning before school, she feeds her animals, followed by an evening feeding at 5:30 p.m. "When I'm cheerleading or have another conflict, my dad makes sure the animals are fed on time," she said.

Three times a week, she runs her animals for 30 minutes and has half an hour of "isometric exercises for them to build muscle in their rumps.

"You don't want an animal that's too heavy up front," she said.



(photo by Dezri Smith)

Raina Curry is shown above with her father Ron Curry (far left) and David Matthews (center). Her lamb, Andy, won Grand Champion honors at the Bell County Youth Fair last week. It was pictured by First State Bank. Matthews is president of the Salado Branch.

She keeps her animals in pens on her grandfather's land near Salado Cemetery. "Grandpa has always been so good to let us use his land for our animals," Raina said of U.G. 'Coach' Smith.

She works part-time at Salado Dairy Queen, which Smith owns, because "he lets

me off on weekends so I can show."

Which she plans to continue into her college years. "Some shows let you compete until you are 20 years old," she said.

At that rate, Ron's Ford may have another 200,000 miles on it. And Raina will almost certainly continue to win.

Final results of Salado students at Bell Co Youth Fair and auction photos next week

STOW AWAY MINI STORAGE

Just off I-35, South of Salado
Behind Farm & Garden Supply
& next to Texaco Truck Stop

947-5502 or 718-7887
(Paul Sanford)

To receive 52 issues of the Salado Village Voice, fill out this form and mail with a \$20 payment to Salado Village, Voice, P.O. Box 587, Salado, TX 76571.

Name: _____

Address: _____

City: _____

State: _____ Zip: _____

" The Most Beautiful Golf Course in Texas. " *

Tucked away in historic Salado, just 45-minutes north of Austin on I-35, is the most beautiful golf course in Texas. The unique No. 3 green on our challenging 18-hole Robert Trent Jones II golf course promises an unforgettable experience.

Golf Packages starting at \$58.00 per person with 1 night lodging. Call for details. Rates effective December 1-February 14. Ask about our 7 night vacation package.

"If you can't relax and enjoy golf at Mill Creek, you can't do it anywhere."

THE HEART OF TEXAS

Mill Creek

P.O. Box 67, Salado, TX 76571
1-800-736-3441 254-947-5141

* Quotes are excerpts from Great Texas Golf by Pat Seelig, Wordware Publishing, Inc.

Sales & Services

SERVICES

Trees, Shrubs & Landscaping, Pruning, Removal and Hauling. Flower beds, general yard work, top soil. Major credit cards accepted. Call Victor Marek at 947-0303 24 Hr. Emergency Service tfnb

Storage Space in Salado 8x12, 16X24, and up. Some drive-in doors. Call Salado Storage 947-5575 tfnb

ACREAGE MOWING
Any size, Fast service
Call Ken 1-800-930-4707

Pressure Wash: Driveways, sidewalks, and patios. Yards mowed, reasonable rates. 947-3613. tfnb

After Hour Cleaning Office- Shops- Rental
Call Nadine 947-5579 tfn

Expert Alterations/tailoring
Call Hope 947-4773 tfnb

House Cleaning Done Reasonable
Call Debbie 939-7127
Sue 939-1724 tfnb

Singing Cowboy for Hire... parties, weddings, roundups, dinners, cattle drives. Freddie Fuller 939-8560 tfnb

Power Washing, Houses, Buildings Wood, Brick, Stone, Siding etc. Mold & Mildew removal, paint stripping and preparation. Environmentally safe 254-939-3009 TFNB

Window Cleaning, Commercial, Residential. Call for free estimate. Digital pager 512-864-8594

BONNIE'S CLEANING SERVICE

has great service and makes it just the way you like it.
Guaranteed to please.

939-8685

TREE TRIMMING

should not be left to amateurs. We observe correct procedures, disinfecting saws, painting cuts and have 12 years experience in this area. We are fully insured and give FREE ESTIMATES.

Red & White Greenery

1-800-930-4707

Painting, Interior/Exterior, Reasonable rates. 26 years experience. Free estimates. 947-8551 3/28/p

Yard Maintenance - Mow, weed-eat, trim, flower beds. Call 771-3050 or 771-0391 Ron or Popeye. 3/25p
Experienced Registered Christian Daycare has drop-in availability. newborns - 2 1/2 years. Call Jolene 947-4733 3/11p

Housesitter: I am a dependable college senior available anytime to homesit or to care for plants and animals. Call Angie Cabaniss 947-1975 2/18p

Mom of Infant will provide Individualized child care in my home Call Lisa 947-4496 2/25p

Health Insurance - Affordable rates, Doctor of your choice. Office visits, prescription card, choice of plans, call for rate quote. 1-888-227-3596 2/25p

HELP WANTED

Help Wanted: Housekeeper - Full time. Live-in considered. Good pay. must have dependable transportation and speak English. 947-3830 after 6 p.m. 2/18p

For Sale:

Store fixtures for sale: 2-ways \$37, 4-ways \$44, wall grid hardware 40% off, 8 ft. counter \$100, Georgia Pine Armoire \$1200, Mexican Chandeliers \$15. 3-way mirror \$125 and more at Village Boutique on Main Street. call 947-9100 tfnb

Lighted display case Glass sides and shelves, 32 inches sq. by 7' 3 inches h. 4 spot lights top, 4 fluorescent lights bottom. \$300 Can be seen at Magnolia's 947-0323/8982 2/18p

Furniture for sale 5 piece dinette, walnut entertainment center with glass shelves 947-5032 Leave message

2/18b

REPO'S REPO'S REPO'S Save \$\$\$ on late model 96 & 97 Single and double wides. Call for info 1-888-464-6990 tfnb

Vehicles:

1984 Ford 1/2 ton extended cab. 6 cylinder automatic, clean, low mileage, been sitting, needs registration and vehicle inspection. \$2,000 firm. 254-939-7530 2/18

LIQUIDATION SALE

Enticements Antiques & Darlines of Ft. Worth. Thursday-Saturday, Feb. 12-14, 10 a.m.-5 p.m. at 22 Main St. Salado (Village Boutique)

Selling remainder of antique business at cost. Jewelry, art, furniture, lamps, clocks, Orientalia, collectibles. Tonka & Fisher Price

Fall Clothing 75% Off, and much more. Showcases, store fixtures, displays, mannequins. Not to miss!

Salado Plumbing
We Are Ready
Repairs
New Home Construction
947-5800



Firewood Split Oak
*125 full cord
*65 half cord
Call Pee Wee McLaughlin
947-0707
947-9404

Amilco
Masonry & Fireplace Co., Inc.
Masonry & All Types of Brick & Rockwork
Fireplaces
Build Clean Repair
411 S. Main Belton
254/939-0349

ALL TIRES

24 Hour Road Service



JR Pager: (254) 899-3463
Mobile: (254) 721-7689

P.O. Box 980
Salado, TX 76571

Clawson Disposal Service

offers great garbage service at a competitive price.

Container & curbside recycling also available.

512-746-2000



Gidley's Home Care

All types of home repairs

Small jobs welcome

Try Us First

947-5579

EAGLE DISPOSAL

947-1288

Residential Garbage Service
Locally owned & operated

Answers to Super Crossword

MACHO GAFFES BAH RIM
USHERS RESORT ICE ALY
THEREARETHREE LEXICON
TET CRTD BEVEL ARENA
POGO BLAZER AGORIAS
BARONET LODGE SIMON
AWOL OUA REASONSFOR
NATES BURMA RTES IKE
ART UBOAT SMAZE SITH
LEW BRAS OTIS AMAZED
ENTERINGATEACHING
AFTELD TLIE ORAL END
VALVE MOVER GREBE ROE
EVE PACE EMOTE SHALL
CIAREERJUNE ALA ALTO
STEAL PILL MERTDEN
JORSSEY ARTIDLY OLEG
SCHER TRACY NOIR DES
CONNOR JULYAND AUGUST
IUN AWE ARLENE SNIAPTO
TIE LEE HESSE SLEEP

You can run an ad
this size every
week for just \$5
each week.
Salado Village Voice
947-5321
Deadline is Friday

Pager (817) 742-4238

Office (817) 939-2963

Centx ProPainters

Specializing in Repainting

Serving the Cen-Tex Area

WILLARD BENNETT



512-455-7641
512-455-7631

MILANO LIVESTOCK EXCHANGE

P.O. Box 146, Milano, Texas 76556

Owners

RONALD W. LASTOVICA STEVEN R. LASTOVICA
254-939-6478 254-947-3677

Sales Every Tuesday

CHICK LANDSCAPING



• Sod • Hydromulching
• Dirt Work • Shrubs

FREE ESTIMATES

Darin Chick
(254) 947-9150

2497 Royal Street
Salado, TX 75671

947-5579

Salado Electrical

Service Company

Home & Business Repairs & Service

Jimmie & Nadine
Gidley

MAJOR APPLIANCES
LAWN & GARDEN
TVs • STEREO
TOOLS

SEARS

Retail Dealer
3103 S.W. H.K.
Dodgen Loop
TEMPLE
254-770-1221

We are the Champions



8th Grade Girls District Champions --- Again!

Mandy Tsosie, Amanda Rivers, Coach Melvin Bates, Emily Bates, Robyn Womac, Stephanie Marley, Kate Mentzel, Julie Couchman, Misti Simonton, Randi Rader, Lindsay Quirk, Megan Fleck.



7th Grade Girls District Champions

Katee Blankenship, Stephanie Krueger, (Back row) Elizabeth Dachs, Lindsey Pruitt, Meagan Joiner, Kaci Fritsch, Leann Whitt, Lauren Mewhinney and Coach Susan McLaughlin.

**Salado 7th & 8th grade girls dominate
District 26AA Basketball!!
Congratulations, we are proud of you!!!**

SALADO *Visitor's Guide*

February 18, 1998 Salado Village Voice, Page 1B



(photo by John Eubanks)

Robert and Diana Woolard pose in the "living room" of Horsefeathers on Rock Street Drive.

Walk into Horsefeathers in Salado and your sense of taste comes alive

by John Eubanks

Walk through the door of Horsefeathers on Salado's Rock Creek Drive and see what comes alive.

Chances are your senses will.

Oh, the sights and sounds and intoxicating smells ...

... transform the five senses into a sixth sense of seventh heaven.

The comfortable antique and gift shop reopened the first of this month at its new location at #2 Rock Creek, next door to where it used to be.

Owners Robert and Diana Woolard consolidated the former store and their other shop (Antiques, Urns and Ferns on Royal Street) into one location.

"We finally got to where we wanted to be," Diana said, while sipping coffee on the patio out back.

Visitors to the shop are welcome to sit at the patio table and sip coffee or soda. Many of them are from Dallas who

come to Salado to get away from the big city hustle and bustle.

"They like to linger, and sit and visit out here," Diana said. "It helps them find their quiet spot. The men can sit out here while the women shop, and read the paper and have a coffee or a Coke."

No sooner had Diana given a visitor a tour of the place, when a steady stream of customers came in. One was a man from Savannah, Ga., who was eyeing a "bookcase secretary" in the living room of a shop converted from a two-bedroom house.

"That piece has five secret drawers," Diana told him.

"I have one with two secret drawers," he said.

"So, you've probably found a couple of these (drawers) already," she responded.

"I found one drawer on mine with several half dollars," he said.

"I wasn't that lucky!" Diana shot back.

She certainly feels lucky to be in Salado.

Diana was in business for herself for 20 years before coming to Salado. She operated two hair salons in Killeen (one with 15 employees), selling antiques out of both of them.

One was appropriately named Heirlooms and Hairpins. She also leased out space in Bartlett, but her dream was to open a shop in Salado.

"The quaintness of the village, the innocence of it," she explained.

See Taste, Page 2B



Catfish & Little Bream

The Legend of Catfish & Little Bream
Children's book available for purchase for \$17.95

Wells Gallery

• Limited Edition Prints • Bronze Sculptures • Original Paintings
Next door to Stagecoach Inn dining room
254/947-0311



The Rose Mansion

Bed & Breakfast
Lodging also in authentically restored log cabins & a German stone cottage

One Rose Way, Salado
254-947-8200 or 800-948-1004
www.touringtexas.com/rose

SALADO HAUS
Gifts • Antiques • Etc

A Fenton Showcase Dealer
Fine Gifts, Collectibles & Antiques

Old Mill Plaza at corner of Pace Park Rd. & Main St.
Salado, TX 76571 Open Daily (254) 947-1868

Coral View & Other Spring Fashions Arriving



Clio

A Unique Ladies Boutique
No. 3 Salado Square on Main St.
Salado, Texas
254-947-0322 Open Daily
Monday-Saturday 10 to 5
Sunday 1 to 5
Visa/MC/AmEx/Discover
Layaway Accepted



Bunkhouse (located behind Main House)

Country Place

Bed & Breakfast

Exit 283, from I-35 • East on FM 2268 for 2.5 miles

Reservations 254/947-9683 800/439-3828

Bob & Elinor Tope, Owners/Innkeepers

RURAL CENTRAL TEXAS AT ITS BEST

Main Street Place

A collection of unusual furniture, lighting & accessories for the home

#8 Salado Square
Salado, Texas

Nancy Light
947-9908

Taste

FROM Page 1B

So, last June she opened Horsefeathers.

Diana said she saw the name Horsefeathers awhile back at a since-closed shop, and liked the name because it was catchy and people could remember it.

"We carry mostly antiques and collectibles," she said.

"We also carry a lot of kitchen items, including pottery."

For men, there are golf items and other "masculine" things. There's even some stuff for pets.

The shop is small -- some would say quaint -- but it's laid out beautifully.

"She did all the decorating herself," said Robert, who helps out at the shop, along with Pamela Harris. (Robert spent 30 years at the Killeen Post Office, before retiring as assistant postmaster in 1992.)

One of Diana's goals is to build a trusting relationship with her customers, in hopes that they will cheerfully return.

She wants Horsefeathers to be "a nice calm, fun place for them to come." On chilly days, the fireplace is lit.

The shop's warmth was evident on the Thursday before Valentine's Day, as piano music by Tom Prin's CD, "Spirit and Soul," filled the air.

It confirmed what Diana had said: that folks feel at home at Horsefeathers.

Horsefeathers is located at #2 Rock Creek, along the same row of shops as Sir Wiggleworth's (back from the road a bit).

Business hours are 10 a.m.-6 p.m., seven days a week. The phone number is 947-3203.

Salado Country Antiques

United Design Santas
Dept. 56 Snow Babies
Seraphim Classic Angels
by Roman

Fine Estate Pieces

Roseville • Pickard China
Royal Doulton • Flow Blue
Carnival Glass • Wedgewood
• Silverplate • Sterling Silver
• China • Linens • Gifts

Shady Villa on Main St.
(254) 947-8363 Open Daily



Aunt Granny's

One Hour in home decorating consultation FREE with any floral or home decor purchase. (\$100.00 Value)

Select from many wonderful custom floral designs, window treatments & decorative accessories to enhance any decor. Offer available only until March 1st.

#12 Old Town Salado
947-5520



Old Town Salado

"Texas Ranch Furniture & Home Accents"



A furniture showroom that's just southwest of the usual

JUST OFF IH-35 BETWEEN EXITS 284 & 285

Salado, Texas
#3 Old Town Salado • 254-947-4479

- Nature's Sunshine Products
- Nutritional Supplements
- Natural Bath Items
- Unique Gift Selections
- Gift Baskets
- Angels
- Candles
- Books

We cater to body-mind-spirit... knowing you want optimum health to better enjoy life naturally.



#10 Old Town Salado • 254-947-1909

Salado students in grades 8-11 can pre-register for next school year

Salado High School students in grades 8 through 11 will begin pre-registration within the next week for the 1998-99 school year. Students will be given a list of class offerings to take home and discuss with their parents. They will need to select the courses they will need to take next year to meet their graduation requirements. Copies of the different graduation plans will also be available to the students.

Parents are urged to work with their students on class selections and return the forms as quickly as possible to the school.

- City Girl
- On The Verge
- Starfire
- Susan Bristol
- Crystal Handwovens



The Store

in Old Town Salado

Main St. across from the Salado Civic Center

Open Daily (254) 947-9000

Cathy's Boardwalk Cafe

254/947-8162

Friday, Feb 20

Italian Buffet

Lasagna
Chicken Parmesan
Spaghetti w/
Meatballs
Steamed Vegetables
Array of Cold Salads
Garlic Toast
Bread Pudding w/
Whiskey Sauce
5:30-8:00pm
\$8.95 per person

Open for Lunch
Monday-Saturday
11:00 - 3:00

MJ's

COUNTRY CORNER

OLD TOWN SALADO #6
254/947-8885

HANDMADE CRAFTS

GIFTS & GREETING CARDS

FORMERLY FENCE FURNITURE

CUSTOM ORDERS AVAILABLE

SAVANNAH MIXES

DESIGNS IN WAX CANDLES

The Gallery

in Old Town Salado

Texas Artists
George Boutwell
B. Herd
Larry Dyke
& others

#16 Old Town
254-947-9000

Team sponsors sought for new Salado Youth Soccer Association

Team sponsors are being sought for the newly formed Salado Youth Soccer Association. Your advertising dollars will provide jerseys and equipment for the children, officiating fees and insurance.

Each child pays a fee, but it covers a minimum of expenses. It is anticipated that 30 teams of children ages 4-16 will participate in this opening Spring season.

The surrounding communities of Bartlett, Holland, Florence and Jarrell will also have teams play through the Salado Youth Soccer Association. Most of these children have never played soccer. According to spokesperson Debbie Califano, "We hope that these teams will be able to find sponsors from their own towns, but if they can not, we want to be able to provide for them. There are several children that couldn't play if a scholarship fund was not available so we are also seeking donations for this fund."

Team sponsorship is \$150 and donations are accepted in

any amount. Sponsors names will be placed on a banner at the soccer complex.

If you would like to sponsor a team of young people send the name of your business or

individual to be placed on the banner, address, and enclose \$150. Mail this information to Salado Youth Soccer Association P O Box 1000, Salado, TX 76571.

New books found on shelves at Salado Public Library

New books to be found on the shelves at the Salado Public Library are:

- Fiction**
Visitors by Anita Brookner
Paradise by Toni Morrison
Lover's Almanac by Maureen Howard,
A Certain Justice by P.D. James
Then Came Heaven by LaVyrle Spencer
Heart and Blood by Richard Nelson,
The Winner by David Balducci
Color of Water by James McBride
A Maze of Murders by Roderic Jeffries
The Serial Sneak Thief by E.W. Hildrick

- Enduring Love** by Ian McEwan
An Educated Death by Kate Flora
The Running Woman by Patricia Curlon
The Sky, The Stars, The Wilderness by Rick Bass.
Biography
Jane Austen by Claire Tomalin
Non-Fiction
Virtuous Woman by Kaye Gibbone
The World According to Peter Drucker by Jack Beatty
American Heritage New History of WWII by Seven Ambrose
Giving YHR Love That Heals by H. Hendrix

The Little Tin Hutch



Antiques
And
Collectibles

550A N. Main St. Salado
(Next to Salado Antique Mall) 254/947-5537



Sterling Silver Jewelry
Style... Selection... Savings.

N. MAIN AT PACE PARK DR.
254-947-5908 Open Daily



A GOLD MINE OF TOYS

Sweet
Nut Things

#4 Shady Villa • Salado • 254-947-8088
Mon-Sat 10-5, Sun 12-5

Find us at www.Instar.com.sweetnut

Custom-Made Baskets
For All Occasions

FREE Delivery to Temple/ Belton/Salado



Peddler's
Alley

5,000 sq. ft. of antiques,
collectables & gift items
in a unique setting

Located off Royal St.
behind Central Texas
Area Museum

254/947-9722
Tues.-Sat. 10am-5pm
Sunday 1-5pm

Christy's
of
Salado

Main St. at
Pace Park Dr.
Salado
Open Daily
947-0561



We Accept
Mastercard, VISA,
American Express
& Discover



Inn on the Creek • Reue and Holland House
Giles-Kindred House • Sally's & Osage Cottage
Center Circle & Royal Streets
947-5554



"Full Service Accommodations for the discriminating Inn guest visiting Salado"

- ◆ 20 Guest Rooms w/ private baths
- ◆ Elegant surroundings for private affairs
- ◆ Facilities for business retreats
- ◆ Candlelight dining in an elegant atmosphere overlooking Salado Creek

This Weekend's Featured Menu
Greens w/ Apples, Walnuts
Prime Rib w/ Horseradish
Peanut Butter Pie w/ Caramel
Please call for reservations!

Step into our world...
Savor the experience
for a lifetime!

**Red Barn
Antique Center**
Exclusively Antiques

A collection of professional
dealers featuring fine antiques
as well as quality antique
accent pieces.

Royal Street Commons
2 blocks east of Stagecoach
Daily 10-5 947-1050



THE GATHERING PLACE
 at Salado Civic Square
 Gourmet Coffee Bar
 Espresso • Latte • Cappuccino
 Muffins • Bagels
 Breakfast Tacos • Fresh Croissants
 Deli Sandwiches
 Mon-Fri 6 am-9 pm. Sat & Sun 6am-10pm
 254/947-4749

Brambley Hedge
 A Fine Country Inn
 Carol Anne Hanks
 1530 FM 2268 (Holland Rd.)
 1 mile east of Main St. Salado
 254/947-1914



Elise & Co.
 Custom wedding florals, architectural details for creating a wedding that's uniquely yours...
 Visit the studio and discover lovely gifts for the Bride and her party... browse through idea books and talk with our consultants about wedding decorations and details... We are located off Main Street behind Fletcher's Book Store.
Now Open!
 (254) 947-1068
 (888) 553-5478
 10 am. to 6 p.m. Wed. - Sat.
 17 Salado Plaza Drive, Suite No. 1




Share a thought.

GREGORY'S
 SWAROVSKI CRYSTAL MEMORIES
 Shady Villa
 401 S. Main St.
 Salado, TX 76571
 (254) 947-5703
 (800) 473-5703

R.D. Coonrod's wood sculptures now on display at Mountain Mary's

by John Eubanks

Mountain Mary's Western Connection in Salado is now featuring the wood carvings of chainsaw sculpture R.D. Coonrod.

His work is displayed outside of Mary Bollinger's western store on the west side frontage road of I-35 (where the teepee sits).

He will be at the store on Fridays, Saturdays and part of Sundays, carving his work with one of several chainsaws.

Coonrod won the 1995 Grand National Chainsaw Sculpting Championship in Grand Rapids, Minn.

The 34-year-old native of Quincy, Ill., has been carving for a living for six years. He became familiar with chainsaws as a youngster when his father, Ron, worked in the forestry division of an Iowa power company.

"Dad got me started," Coonrod said. "He was the original sculptor."

With the help of his dad, Coonrod built houses for nine years before deciding to make a living as a chainsaw sculptor.

The former Eagle Scout certainly had a knack for carving, using his Boy Scout knife to earn a merit badge for carving.

In 1994, the year before he won the grand nationals, Coonrod placed fourth. It was his first national competition.

"The first time out I was pretty successful, and I gradually got good at it," he said.

To earn money, Coonrod gave chainsaw demonstrations at Lowe's hardware stores -- doing 56 store openings in 28 months. It was hard work, but the pay was good.

He eventually migrated to the tourist town of Branson, Mo., but left after a year-and-a-half. Many of the visitors came there on tour buses or in cars with others, and they didn't have the room to take back many of Coonrod's carvings.

In 1995, he moved to Texas -- "with a three-quarter ton pickup and a box of chainsaws, that's it" -- and opened a shop near Temple Lake Park to display his work. Last March, he moved the shop to 5680 FM 439, a few miles west of Frank's Lakeview Inn on Lake Belton.

Among the sculptures on display is a 14-foot carving of St. Francis.

Since coming to Texas, Coonrod has also acquired a three-station styling salon (which his girlfriend runs) and built a 5,200-square-foot house



(photo by Marilyn Fleischer)

R.D. Coonrod is shown above as he begins his chainsaw sculpture. Coonrod will be at Mountain Mary's in Salado on weekends displaying his craft.



(photo by Marilyn Fleischer)

R.D. Coonrod is shown above with completed chainsaw sculptures on display at Mountain Mary's in Salado.

overlooking Lake Belton.

He has a dream of building a log cabin in Salado, where he could display his carvings.

Coonrod carves a variety of wood (cedar, walnut, pecan and mesquite), mostly from the Bastrop and Smithville areas, southeast of Austin. His chainsaws have bars (attached to the chains) ranging in length from one foot to eight feet, but he primarily uses the 12-incher and the 16-incher.

Chainsaw demonstrations and competitions require him to wear a hard hat with a shield, safety glasses and chaps (with 30 to 40 layers of Kelvar) that will "bunch up" in a blade and

force the saw to stop.

The Sony Walkman he listens to while carving "is a definite option."

Last week he was working on a carving of an Apache helicopter that was being given to a Fort Hood pilot as a Valentine's Day gift.

"Anytime you do something like this, you end up doing five more," Coonrod said. "Every Apache pilot who sees it will probably want one."

Mountain Mary's Western Connection is located on the west I-35 frontage road off of exit 285.

1997 Annual Review of Bell County Sheriff's Reports Salado Area

Offense	Jan	Feb	Mar	Apr	May	Jun	Jul	Aug	Sep	Oct	Nov	Dec	Total
Assault by Contact			2	1			1		1	1			6
Assault Bodily Injury					1		1				1		3
Assault Aggravated											2		2
Burglary of Building	2				2			2	4		2	1	13
Burglary of Coin Operated	1					2							3
Burglary of Habitation			1		4	1	4			3	1	2	16
Burglary of Vehicle	2	8	1	1	1			6	2	2			23
Credit Card Abuse			1				1						2
Attempt Criminal							1						1
Criminal Mischief		4	1	3		1	2	12	2	10	6	6	47
Criminal Trespass						1	2	2	1			2	8
Cruelty to Animals		1		1									2
Deadly Conduct									1				1
Disorderly Conduct	1												1
Dog Attack												1	1
Dog / Cat Bite							1	1		2			4
Family Violence						1	1		2	1	1		6
Forgery	1			1		1							3
Harassment by Communication			1			2	1	3	1	2	1		11
Hindering a Secured Creditor	1												1
Indecent Exposure	1	2											3
Interference with Child Custody								1					1
Minor in Possession		1						1	1		1		4
Natural Death							1		1				2
Overdose		1											1
Public Intoxication				1							1		2
Aggravated Robbery											1		1
Terroristic Threat			1								1		2
Theft	2	6	4			4	4	2	4	5	4	5	40
Unauthorized Use of Motor Vehicle		1	1				1						3
Hours patrolled by COPS			39.5	51.0	58.5	58.5	57.5	88.8	77.7	58.5	70.0	75.0	635

Zieschang new intern at Solana

Steven Zieschang is the new intern at Solana Ranch.

His last name was misspelled in the Feb. 11 edition of the *Salado Village Voice*.

Zieschang joined the ranch, southwest of Salado, on Jan. 21. He has a dual major at Texas A&M, Rangeland Ecology and Wildlife.

He spends two days in the classroom at A&M and three days at the ranch.

His duties at Solana Ranch are to gather information for statistics, wildlife management, habitat and range improvement. He also guides tours, takes surveys and census, and range and wildlife problem solving.

Jim Lorenz, Solana Ranch manager, said they are "really pleased to have him."

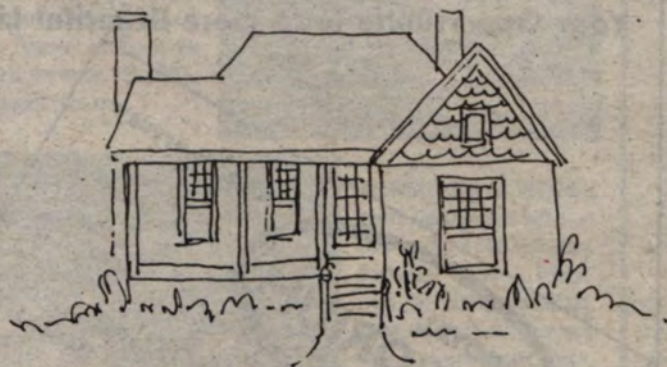
Zieschang plans to continue his internship and do post-graduate work on the ranch.

He is the son of Darrell and Barbara Zieschang of Georgetown.

Salado Antique Mall

Open Mon-Sat. 10 a.m.-5 p.m.
Sunday 1-5 p.m.

720 N. Main St., Salado
(Across from the Halley House)
254-947-1010



BAYBERRY'S
ON MAIN

Hutchens House

Antiques,
Old Stained Glass
N. Main St.
Salado 947-8177
Open weekends

Fletcher's

Books & Antiques

North Main Street
947-5414
OPEN DAILY



The Inn
at Salado
Historic
Bed & Breakfast
North Main &
Pace Park Dr.
254/947-0027
800/724-0027

Horsefeathers

Antiques • Collectibles • Gifts

#2 Rock Creek Dr. 254/947-3203

Browning's Courtyard Cafe

Featuring Daily Lunch Specials

• Soups • Salads

Classic Sandwiches

on Fresh baked Bread

Homemade Desserts • Cookies

Catering to Your Specifications

Carry Out 947-8666

#4 Salado Square

Main St. Salado

Beautiful Things!
in store for you!

Antiques, art, gifts, and
accessories for your home.
Plus handpainted furniture
by Patty Thomas... simply
more than you can imagine.

680 N. Main 254/947-3625

NORTH MAIN
SALADO, TEXAS (254) 947-9110

ROSE COTTAGE
Gifts & Antiques

TEA SETS • CHILDREN'S BOOKS • PRINTS
• BEDROOM SUITES • ARMOIRES • STUFFED ANIMALS • COLLECTIBLES

AND THE
PINK ROSE
Tea room

DELICIOUS FOOD & DESSERTS • RESERVATIONS NOT REQUIRED
HOURS 10AM-5PM
CLOSED TUESDAYS



Magnolias
on the square

Magnolias
on the square

An Emporium of 19 Specialty Shops
in one convenient location
#1 Salado Square -- Main Street
P.O. Box 1054 Salado, TX 76571
(254) 947-0323 Fax (254) 947-0324

NATURAL TREASURES

Minerals & Fossils for the Collector or Decorator
Bob Freymuller, owner

Store Located in: Office:
Magnolias on the Square 2501 Dip Cove
Main St., Salado, Texas 76571 Austin, Texas 78704
(254) 947-0323 (512) 443-8053
email: natural2@ix.netcom.com

Margrit's Shoe Chateau
for Ladies & Children
Magnolia's on the Square
#1 Salado Square Main St.
(254) 947-0323
fax (254) 947-0324
Margrit Chapman, owner



Just For Him

Distinctive Gifts for Men

Brighton Remember Him
For Men for all occasions

Specialty Foods Located in
Magnolia's on the Square
947-0323



Papagayo
An Ethnic Store
Jewelry - Folkart - Clothing

A shop full of Wonderful Ethnic treasures to Wear
Flax, Marketplace, Veranda Wear and more.
at Magnolia's on the Square #1 Salado Square
Main St. Salado, TX 76571 254/947-0323



'Murder on the Menu'

*Performance
set Feb. 20*

The Range at the Barton House will present a murder mystery melodramatic comedy dinner theatre performance - one night only - Murder on the Menu, written and directed by Raymond Carver, 7 p.m. Feb. 20 (Cash Bar with Cast of Characters at 6 p.m.), featuring Salado, Belton and Temple residents Patty Campbell as Marylou Setswan Chou, Hulda Horton as Ima Svedish Smorgasbord, Pete Jennings as Leon MacBeth, Bill Jones as Bubba Billy Joe Don Bob What, Jackie Ogden as Leona Jean MacBeth and Katherine Wende as Maria Callous.

The Menu by Chef David Hermann is Act I: Field Greens



(photo courtesy Dr. Raymond Carver)
Pete Jennings and Jackie Ogden practice for "Murder on the Menu" to be offered Feb. 20 at The Range at the Barton House.

with Fresh Mozzarella in a Sun-dried Tomato-Basil Vinaigrette, act II: Pan-Roasted Chicken breast with Cheddar-Scalloped Potatoes and natural Jus, and Act III: Traditional Creme

Brulee with cookies. This historic Barton House provides a perfect backdrop for this delightfully suspenseful comedy.

For the few remaining reservations call 947-3828.

Vegetable gardeners successful until disease problems crop up

by **Irene C. Miller**
Co. Ext. Agent

Many vegetable gardeners are successful for the first two or three years and then begin to have disease problems that mean the difference between success and failure. In many cases, these diseases can be traced back to a buildup of diseased leaves or stems being chopped into the garden soil, diseased roots which have been left to decay in the soil, or diseased foliage left on the surface of the soil.

All plant material should be removed from the garden after it is through producing an edible product. If the material is not badly diseased, it may be placed on a compost pile to undergo decomposition and

then may be returned to the garden. Badly diseased plants should be placed in the garbage. Plants which have root knot nematodes should never be placed in a compost pile because the chance of returning partially decomposed nematode-containing roots to the garden is too great.

Removal of diseased foliage during the season is also an important step in disease-free gardening. Infected leaves can serve as a source for future infections on surrounding healthy foliage. In addition to serving as a source of inoculum, the decaying foliage on the soil surface may also serve as a food source for a soilborne disease known as Southern blight which attacks tomatoes, peppers, eggplants, Irish potatoes and other vegetables.

Sanitation is important any time, but it is especially important now since many gardens are only being partially used or not used at all. Gardeners should clean up any plants in the garden and till the soil to chop all remaining foliage and roots under the soil so that all matter will be decomposed before the next gardening season.

For more information on vegetable gardening in Central Texas, contact the Extension Office here in Belton for copies of our gardening publications.

Educational programs conducted by the Texas Agricultural Extension Service serve people of all ages regardless of socioeconomic level, race, color, sex, religion, national origin or disability.

Antiques Antiques
Your Opportunity for a more Beautiful Life

ROYAL EMPORIUM
of SALADO

Open Everyday

- Antiques
- Art
- Interiors
- Gifts

Fine Flavored Coffees
One Royal • P.O. Box 280 • Salado, Texas 76571 • 254/947-5718
Doris and Robert Denman

**Our 21st Year
in Salado**

Salado POTTERY

NEXT TO STAGECOACH INN
Handcrafted Stoneware
by Jim Dale
OPEN DAILY (254) 947-5935



The Dusty Rose
"Homes of Santas Unlimited"
Large selection of hand-painted Santas by Karen Lee
Open Daily
110 Royal St. 947-9215

Feb. 12 meeting of Chamber's Ladies Auxiliary draws big crowd

Once again it was standing room only at the Feb. 12 meeting of the Ladies Auxiliary of the Salado Chamber of Commerce. At this special coffee 124 ladies were in attendance, with 25 new members being greeted and introduced by Pres. Marge Kirkman. Total membership now stands at 157.

The Women's Chorale sang several songs commemorating Valentine's Day. Katherine Wende, the director, gave a short history of the chorale. She said that three years ago, she and Marge Kirkman, the pianist started the group. After four months of practicing, the chorale presented a concert at the Halley House. People were standing inside and out to hear the group sing. They later were able to buy a baby grand piano and they donated it to the Civic Center. Today, the Chorale performs three to four times a year for the public.

The Chorale began the program by singing a song "Salado's Legacy" written by Minta Landrum, vice-pres. and program chairman, (the Orange Lady). On the second round the audience joined in the singing.

The next meeting will be held



Marge Kirkman and Katherine Wende look over music during the Salado Women's Chorale performance last week.

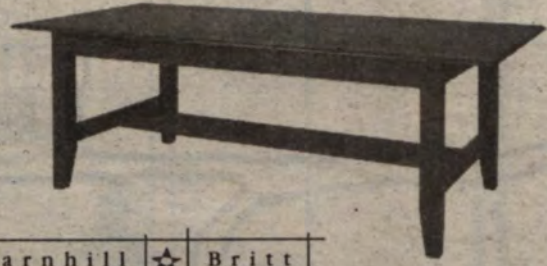
at the Stagecoach Club 9:30 a.m. Mar. 12. The program will be on the Historical Society and the Salado Public Library. All the programs this year will be on Salado's Legacy. All ladies in the area are invited to attend.



(photo by Marilyn Fleischer)

The Salado Women's Chorale entertained the Ladies Auxiliary during its Feb. 12 meeting.

Throw away your tablecloth.



Barnhill ☆ Britt

handcrafted furniture

800.473.1494

www.barnhillbritt.com

Salado Square • Salado & Whit Hanks Antiques • Austin

INN keeping With The Times ...

417 North Main, Suite #202 • Salado, Texas 76571

Bed & Breakfast
Reservation Service

For information and reservations call ...

(254) 947-9683 or 1 800 439-3828

M-F 9 a.m. to 6 p.m. • Sat. 10 a.m. to 3 p.m. • Closed Sundays

Original
Landscapes,
Seascapes,
Westerns

Paul Burkle,
C.W. Dykes,
A.D. Greer,
Travis Keese,
Larry Prellop, Royce
Roberts,
Jerry Ruthven,
Gary Thornton
& other artists



By Larry Weston

Prellop Fine Art Gallery

Creekside Center Main St. Salado Open Daily
(888) 461-2605 (254) 947-3930

The Strawberry Patch

- Cappuccino & Espresso Bar
 - Unique Gift Selections
- Fine Gourmet Foods, Coffees & Teas
 - Gift Baskets Shipped Anywhere
- Extraordinary Hand-Painted Furniture

Creekside Center
Main St. • Salado
947-9955

Open
Daily

Donna Jessica
Spring
Collection

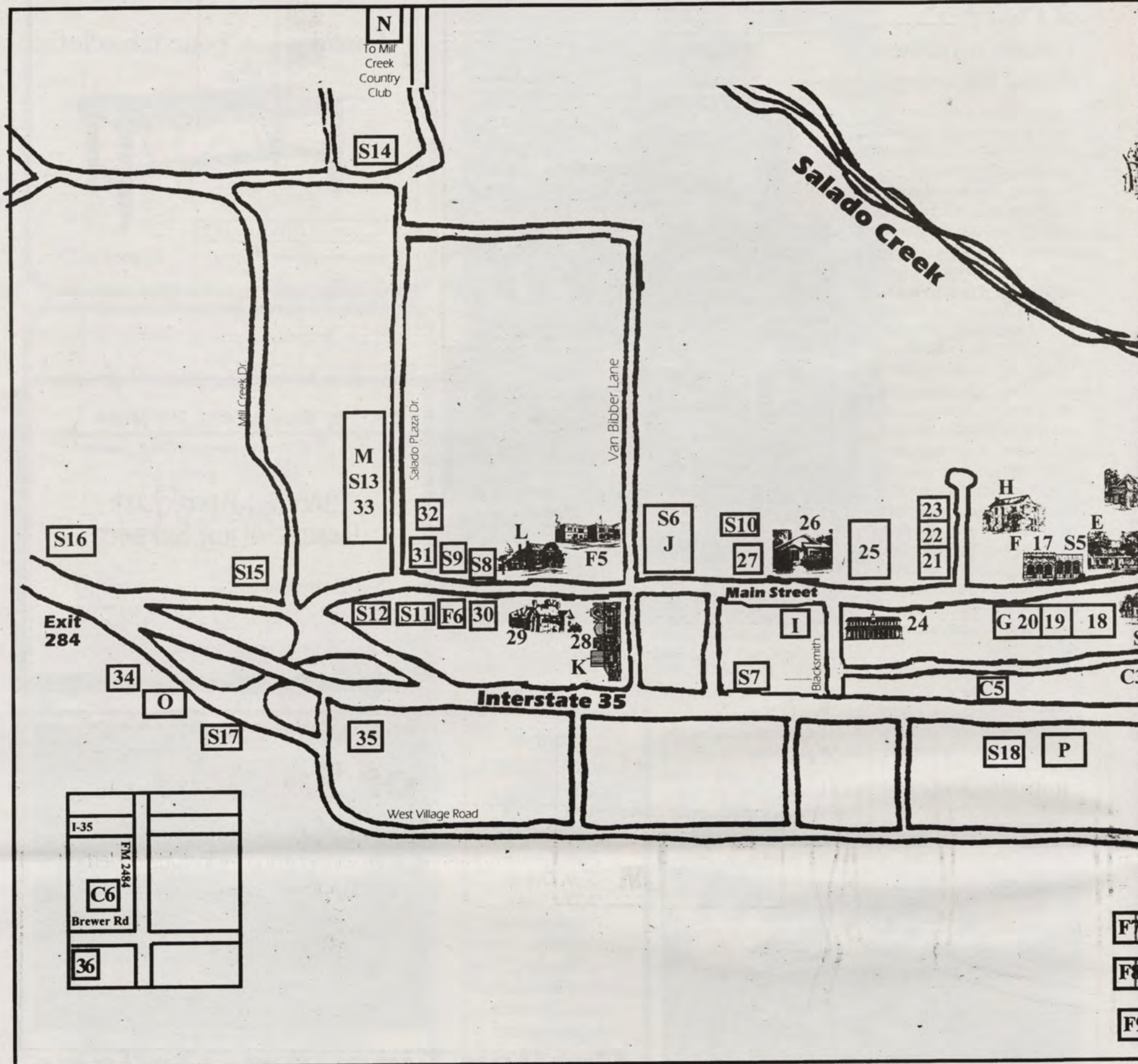
50% off

ALL WINTER MERCHANDISE

Susan Marie's
Salado

MAIN ST., 947-LADY,
MON-SAT. 10-5





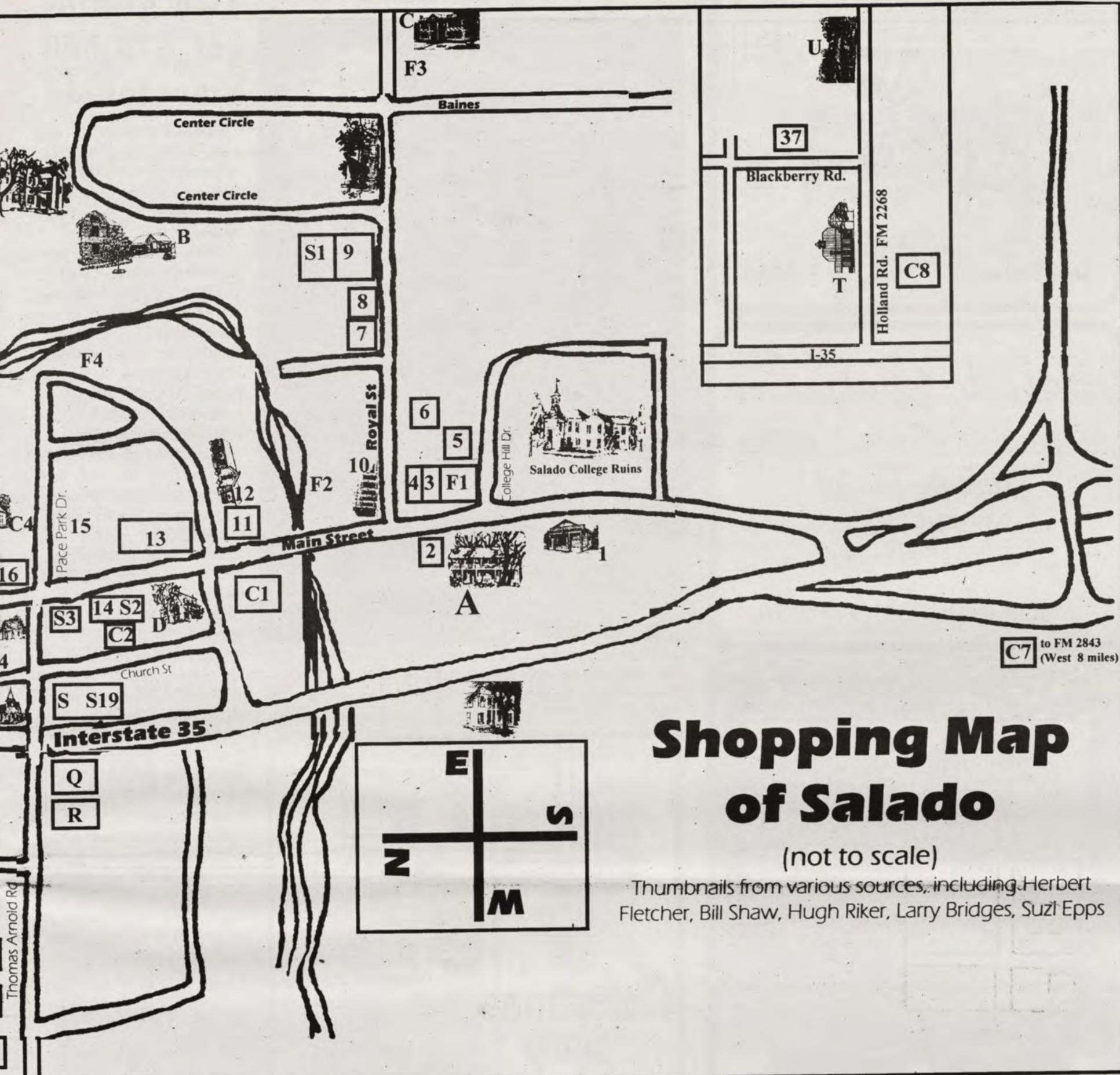
Shopping in Salado

- | | | |
|--------------------------------|---------------------------|--------------|
| 1. Wells Gallery | Next to Stagecoach Inn | 254/947-0311 |
| 2. Salado Pottery | Next to Stagecoach Inn | 254/947-5935 |
| 3. Salado Galleries | Main Street | 254/947-5110 |
| 4. SHADY VILLA | Main St and Royal | |
| Gregory's | Shady Villa on Main St. | 254/947-5703 |
| Salado Country Antiques | Shady Villa on Main St. | 254/947-8363 |
| Sweet Nut Things | Shady Villa on Main St. | 254/947-8088 |
| 5. Peddlers Alley | Behind Museum off Main | 254/947-9722 |
| 6. The Dusty Rose | Royal St. | 254/947-9215 |
| 9. ROYAL STREET COMMONS | Royal St. & Center Circle | |
| Red Barn Antique Mall | Royal St. Commons | 254/947-1050 |
| 10. ONE ROYAL | Royal St. at Main | |
| Grace Jones | One Royal | 254/947-5555 |
| The Royal Emporium | Main & Royal | 254/947-5718 |
| 11. OLD MILL PLAZA | Main St. at the Creek | |
| Salado Haus at the Gazebo | Old Mill Plaza | 254/947-1868 |
| Accents of Salado | Old Mill Plaza | 254/947-5908 |
| 12. The Christmas Shop | Green House on the Creek | 254/947-5561 |
| 13. CREEKSIDE CENTER | Main St. at Pace Park | |
| Susan Marie's Boutique | Creekside Center | 254/947-5239 |
| Strawberry Patch | Creekside Center | 254/947-9955 |
| Bundle of Joy | Creekside Center | 254/947-0609 |
| Prellop Fine Art Gallery | Creekside Center | 254/947-3930 |
| 16. Christy's of Salado | 300 Main St. | 254/947-0561 |
| 17. SALADO SQUARE | Main St. | |
| Magnolia's on the Square | Salado Square on Main St. | 254/947-0323 |
| Just for Him | Magnolia's on the Square | |
| Papagayo | Magnolia's on the Square | |
| Natural Treasures | Magnolia's on the Square | |
| Margrit's Shoe Chateau | Magnolia's on the Square | |
| CIO (a unique ladies boutique) | Salado Square | 254/947-0322 |
| Main Street Place | Salado Square | 254/947-9908 |
| Barnhill-Britt Furniture | Salado Square | 254/947-3277 |
| 19. Creations & Collections | N. Main St. | 254/947-9100 |
| 20. Rose Cottage Gift Shop | N. Main St. | 254/947-9110 |
| 22. Horsefeathers | #2 Rock Creek | 254/947-3203 |

- | | | |
|---|-------------------------------------|--------------|
| 24. Heirlooms Shopping Center | N. Main & Blacksmith | 254/947-0336 |
| 25. THE COLONY | N. Main St. | |
| 26. Hutchens House | N. Main St. | 254/947-2547 |
| 27. Book Winkel | N. Main St. | 254/947-3866 |
| 28. OLD TOWN SALADO | Across from Salado Civic Center St. | |
| The Store | Old Town Salado | 254/947-9000 |
| The Gallery | Old Town Salado | 254/947-9000 |
| MI's Country Corner | Old Town Salado | 254/947-8885 |
| Aunt Granny's | Old Town Salado | 254/947-5520 |
| Angelic Herbs | Old Town Salado | 254/947-1909 |
| Texan by Design | Old Town Salado | 254/947-4479 |
| 29. Bayberry's on Main | 400 N. Main St. | 254/947-3625 |
| 30. Salado Antique Mall | N. Main St. | 254/947-1010 |
| The Little Tin Hutch | N. Main St. | 254/947-5537 |
| 31. Fletcher's Books & Antiques | N. Main St. | 254/947-5414 |
| 32. Elise & Co. | #17 Salado Plaza Dr. | 254/947-1068 |
| 33. SALADO PLAZA | 213 Mill Creek Dr. | |
| Brookshire Brothers #69 | Salado Plaza | 254/947-8922 |
| Streets of Salado | Suite #135 | 254/947-1313 |
| Harold's Pianos | Suite #190 | 254/947-4677 |
| 34. Robertson's Hams & The Choppin' Block | I-35, Exit 285 | 254/947-5562 |
| 35. Mountain Mary's Tonkawa | I-35, South | 254/947- |
| 37. Hill Country Cottage Gardens | 152 Blackberry Road | 254/947-0416 |

Dining & Lodging

- | | | |
|-----------------------------------|-----------------------|--------------|
| A. Stagecoach Inn | I-35 exits 283, 284 | 254/947-5111 |
| B. Inn on the Creek | Center Circle | 254/947-5554 |
| C. The Rose Mansion | One Rose Way | 254/947-8200 |
| D. The Salado Mansion | Main St. | 254/947-5157 |
| E. The Inn at Salado | Main St. | 254/947-0027 |
| F. Browning's Courtyard Cafe | Salado Square | 254/947-8666 |
| G. Pink Rose Tea Room & Gift Shop | N. Main St. | 254/947-9110 |
| I. Pietro's Italian Restaurant | Main St. & Blacksmith | 254/947-0559 |
| J. The Gathering Place | Salado Civic Square | 254/947-4749 |
| K. Cathy's Boardwalk Cafe | Old Town Salado | 254/947-8162 |



Shopping Map of Salado

(not to scale)

Thumbnails from various sources, including Herbert Fletcher, Bill Shaw, Hugh Riker, Larry Bridges, Suzi Epps

- | | | |
|-----------------------------------|---------------------------|--------------|
| L. Halley House Bed & Breakfast | N: Main St. | 254/947-1000 |
| M. Samm's Family Restaurant | Salado Plaza | 254/947-0015 |
| N. Mill Creek Country Club | Old Mill Rd. | 254/947-5141 |
| Q. Salado Dairy Queen | I-35 & Thomas Arnold | 254/947-5406 |
| S. Salado Burger King | 15 Stagecoach Rd. | 254/947-8060 |
| T. Brambley Hedge Bed & Breakfast | 1 mile east on FM 2268 | 254/947-1914 |
| U. Country Place Bed & Breakfast | 2.7 miles east on FM 2268 | 254/947-9683 |

Services in Salado

- | | | |
|---------------------------------------|----------------------------|--------------|
| S1. Royal Street Commons | Royal St. at Center Circle | |
| Doug Spiller Photography | Royal St. Commons | 254/947-8585 |
| S2. First Texas Brokerage | In The Veranda on Main | 254/947-5577 |
| S3. First State Bank, Salado | Main & Thomas Arnold | 254/947-5852 |
| S4. Family Dentistry | Main & Thomas Arnold | 254/947-5242 |
| Douglas B. Willingham, D.D.S. | | |
| S5. Linda Pritchard Massage Therapist | Salado Square | 254/947-HAND |
| S6. Salado Civic Square | Main St. & Van Bibber | |
| Properties by Larry Sands | Main St. | 254/947-5580 |
| Farmers Insurance (John Hall) | Salado Civic Square | 254/947-3151 |
| Stillwell Construction | Salado Civic Square | 254/947- |
| S7. Salado Floors and Walls | I-35 east access road | 254/947-0048 |
| S8. Corley, Hicks & Lee | N. Main St. | 254/947-3536 |
| S9. Margaret's Beauty Spa | N. Main St. | 254/947-9360 |
| S10. Elza Porcel Edwards | 405 N. Main St. | 254/947-1176 |
| S11. Century 21 Bill Bartlett | 600 Main St. | 254/947-5050 |
| S12. Compass Bank | N. Main St. | 254/947-5051 |
| S13. SALADO PLAZA | 213 Mill Creek Dr. | |
| Markie McTravel | Suite #110 | 254/947-1168 |
| Homeland Mortgage | Suite #115 | 254/947-4475 |
| Salado Village Voice | Suite #125 | 254/947-5321 |
| Village Pharmacy | Suite #155 | 254/947-3185 |
| Deanna's Creations Flowers | Suite #160 | 254/947-0222 |
| BoTangles | Suite #165 | 254/947-4747 |
| Salado Medical Clinic | Suite #180 | 254/947-9044 |
| S14. Mill Creek Realty | Old Mill Road. | 254/947-8800 |
| S15. Blass Floral | 1209 N. Stagecoach Rd. | 254/947-5529 |

- | | | |
|----------------------|-----------------------|--------------|
| S16. Auto Excellence | I-35 east access road | 254/947-5042 |
| S19. Salado Exxon | 15 Stagecoach Road | 254/947-5660 |

Churches & Civic Organizations

- | | | |
|-----------------------------------|----------------------------|--------------|
| C1. First Baptist Church | Main St. at Pace Park | 254/947-5465 |
| C2. Salado Masonic Lodge #296 | Church St. | |
| C3. United Methodist Church | Thomas Arnold Rd. | 254/947-5482 |
| C4. Presbyterian Church of Salado | Allen Meeting Hall | 254/947-9935 |
| Salado Rotary Club | Tuesday breakfast meetings | |
| C5. Salado Church of Christ | I-35 at Blacksmith Rd. | 254/947-5241 |
| C6. Grace Baptist Church | FM 1670 West of Salado | 254/947-5917 |
| C7. Cedar Valley Baptist Church | FM 2843 (8 miles west) | 254/947-0148 |
| C8. St. Stephen Catholic Church | Holland Rd. (FM 2268) | 254/947-8037 |

Public Facilities & Schools

- | | | |
|---------------------------------|---------------------------------------|--------------|
| F1. Central Texas Area Museum | Main St. | 254/947-5232 |
| F2. Sirena | Springs on Salado Creek | |
| F3. Goodnight Amphitheater | Royal St. | 254/947-9205 |
| F4. W.A. Pace Memorial Park | Pace Park Dr. | 254/947-5040 |
| F5. Salado Civic Center | North Main St | 254/947-8300 |
| Chamber of Commerce | Salado Civic Center | 254/947-5040 |
| Public Library | Salado Civic Center | 254/947-9191 |
| Salado Historical Society | Salado Civic Center | |
| Salado Village Artists | Salado Art Center at the Civic Center | |
| Salado ISD Administration | Salado Civic Center (upstairs) | 254/947-5479 |
| F6. U.S. Post Office | Main St. | 254/947-5322 |
| F7. Thomas Arnold Elementary | Thomas Arnold Rd. | 254/947-5191 |
| F8. Future Salado Middle School | Thomas Arnold Rd. | |
| F9. Salado High School | Thomas Arnold Rd. | 254/947-5429 |

Grace Jones

One Royal

947-5555

Salado Galleries

Just Beautiful Things

Main Street 254/947-5110



Beautiful historic setting on Salado's Main Street
Spacious Gathering Room for Special Occasions
Individual Rooms
bed & breakfast

Calley House

Built 1860 Call 947-1000



Blending the Past with the Present in a two-story gallery.

Offering antiques, collectibles, art, gifts, apparel, jewelry, gourmet coffees, candles, decorative accessories for the home and much more.



230 N. Main St. Salado, Texas
(254) 947-0336

Open Daily 10 a.m.-6 p.m.

ASPEN BAY CANDLES

88 fragrances with wicks! 99




The Fragrance Mushroom Story



(photo by John Eubanks)

This amorous cat rubs up against a lion statue outside of Horsefeather's the day before Valentine's. No response was reported.



"A Christopher Radko Rising Star Store"

Offering the finest selection of ornaments, gifts and designs by

- Annalee
- House of Hattten
- Christopher Radko
- Charming Tails
- Studio Heavenly Angels
- K.S. Adler Victorian Dolls
- Texana Ornaments

In the Green House on the Creek Pace Park Dr., Salado Open 10 a.m.-5 p.m. (254) 947-5561

The Historic

STAGECOACH INN



**Superb Dining
Delightful Motel**

Voted #1 by Texas Highways

**Salado, Texas
254/947-5111**

Two groups get \$75,000 grant for aid

Families in Crisis, Inc. and Legal Aid of Central Texas are in receipt of \$75,000 from DHS for a non-residential program called the Rapid Response System.

The grant proposal is a joint cooperative effort between FIC and legal aid that provides for immediate assistance from law enforcement agencies, courts, hospitals and related providers in order to assist victims of family violence who are in imminent danger with all available community resources.

The four counties served are Milam, Bell, Coryell and Lampasas counties. Modern telecommunications equipment will link participating agencies and a volunteer coordinator will recruit, train, and direct volunteers in the four county area served to assist with the RRS.

The ultimate goal is to allow a victim of family violence to obtain a protective order within 24 hours from one of the RRS locations.

An attorney, a paralegal and secretary, as well as the volunteer coordinator, are assigned to this program.

RRS will be housed in the Legal Aid and Families in Crisis Office in Belton. Program staff will work two days per week at the FIC Shelter in Killeen. It is anticipated that 3,000 will be served.

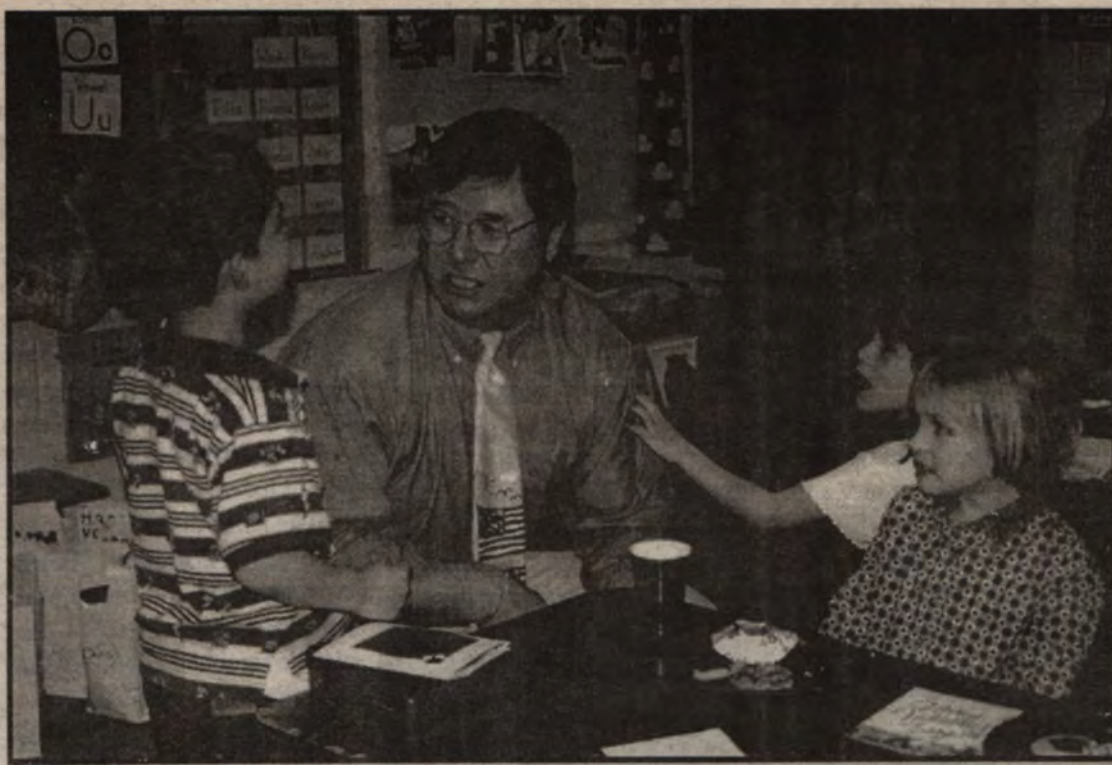
Red Cross seeks area volunteers for disaster help

The Mid-Tex chapter of the American Red Cross is seeking disaster volunteers from the Temple/Belton area. Volunteers should be age 16 and above, and willing to help people in emergencies. All training is provided by the Red Cross volunteers free of charge.

Introduction to Disaster: This training class is specifically designed to explain the fundamental role of the American Red Cross in community response to disasters. It includes the Red Cross relationship with other helping agencies and an overview of potential disasters. This course is a prerequisite for additional Red Cross disaster training.

This class will be held 6-9:30 p.m. Feb. 24 at the Temple Chamber of Commerce building, 2 N. 5th St., in Temple. Those wishing to attend should call the Red Cross, 1-800-497-4280 to register. There is no fee.

The Mid-Tex Red Cross serves Bell, Coryell, and Lampasas counties and Fort Hood.



(photo by Marilyn Fleischer)

"Where are all your teeth?" elementary principal Rod Stockstill asks a youngster as he visited classes during their Valentine's parties last week.

Milano livestock

Compared to last week: Feeder Steers steady. Feeder Heifers steady, Slaughter Cows and Slaughter Bulls steady. Trade active and demand good on all classes. Bulk of supply Medium and Large 1-2 300-600 lb feeder steers and heifers. Supply included around 16 percent feeder cattle over 600 lb with balance mostly feeder cattle under 600 lbs.

Feeder Steers: Medium and Large 1: 300-400 lbs 102.00-115.00, few 117.50-119.00; 400-500 lbs 95.00-104.00; 500-600 lbs 89.00-96.00; 600-700 lbs 79.00-85.50, individual at 88.00; 700-800 lbs 74.00-75.00.

Medium and Large 1-2: 300-400 lbs 92.00-102.00; 400-500 lbs 86.00-95.00; 500-600 lbs 79.50-88.00; 600-700 lbs 74.50-78.00; 700-800 lbs 70.00-71.50.

Feeder Heifers: Medium and Large 1: 300-400 lbs 84.50-92.50; 400-500 lbs 80.00-87.50; 500-600 lbs 76.00-82.50; 600-700 lbs 70.00-75.00.

Medium and Large 1-2: 300-400 lbs 78.00-84.00; 400-500 lbs 75.00-79.00; 500-600 lbs 72.00-75.00; 600-700 lbs 67.00-69.00.

Slaughter Cows: High Cutter and Boning Utility 1-3: 37.50-42.00; other Cutters 1-3: 34.00-37.50; Canner and Low Cutters 28.50-34.00.

Slaughter Bulls: Yield Grade 1-2: 1256-2445 lbs 44.00-48.50.

Replacement Cows: Medium and Large 1-2: 3-6 years old 885-1210 lb cows 6-8 months bred 45.00-55.00 per cwt; aged 905-1220 lb cows 5-8 months bred 38.00-44.00 per cwt.

Cow/Calf Pairs: Medium and Large 1-2: 3-6 years old 845-1150 lb cows w/ 100-150 lb calves 590.00-700.00 per pair.

Source: USDA-Texas Dept of Ag Market News, Amarillo, TX (806) 372-6361.

NATIONAL MORTGAGELINK



J.T. Eckstrum

We have solutions for all your loan needs

Conventional FHA VA

Credit and income problem loans

Call 791-8100 or 760-0244

and schedule a FREE pre-qualification

947-8366 Evenings & Weekends

"I work for the buyer, seller, and agents, not the lender."

2027 S. 61st St., Suite 118, Temple, TX



NEW LISTING: FANTASY ABOUNDS IN THIS BEAUTIFUL VICTORIAN: Historic District. 6BR/5.2BA/Parlor. Library. Gracious dining. Office. Gourmet kitchen. Landscaped with Southern Charm. Longleaf pine floors, molding, soaring ceilings. 5 Fireplaces. All nestled on .97 acres. By appt. only.

MAJESTIC OAKS sets this 5.03 acres above the crowd. Red brick Colonial. 5BR/3-1/2BA. Formal living & dining. Graciousness abounds in every room. Gourmet kitchen is the Heart of the home. VERANDA. By appointment only.



VIEWS...VIEWS...VIEWS... Watch the Deer & Cows play. Builder plan. 3,810 SF 3-story. Basement included. 5BR/4-1/2BA. Formal dining, breakfast, study, corner marble fireplace, entertainment center. Deck, master down. Appointment.



COLDWELL BANKER

To view these properties, call
Glenda DuBose, GRI, CRS
1-800-473-8525, ext. 106
512-970-1057

RICHARD SMITH, REALTORS
1701 Williams Dr. Georgetown



MORGAN'S POINT REALTY

780-1401

2220 Chisholm

3BR/2BA, fireplace, formal dining, near golf course. \$115,000.

Pat M. Newman, Broker

HILL COUNTRY RANCH

572 acres of gently rolling hills offer breathtaking views and native game, including white-tailed, dove and turkey. The completely-fenced property features an older rock house, barn, working pens and one well with a windmill and storage tank. 30 minutes from Kerrville and Fredericksburg.



P.O. Box 2191 • Kerrville, TX 78029-2191
Office 830-896-0510 • Fax 830-895-1589

THE HOMEPLACE

Nestled on a tree-covered knoll in Salado's Historical District, The HomePlace represents the much sought-after lifestyle of yesteryear and reflects proportions, detailing and simplicity of true classical architectural styles.... the best of yesterday built better today.



DREWS
Custom Homes
builder

Gerald Drews
254/773-1067

THE HOMEPLACE Vic Means Temple
254/947-8177
Salado

REALTY EXECUTIVES

1618 Canyon Creek Dr.,
Suite 110
Temple, TX 76502
(254) 773-9190
FAX (254) 773-9224

"Look for the Sign of Success!"

Visit our website: www.realtyexecutives-bell.com

PANORAMIC LAKE VIEW: Just listed. Open, spacious living area, soaring ceiling and fireplace. Large bedrooms, master with 2nd fireplace. Hot tub on deck. \$179,900.

A VIEW OF LAKE BELTON: One of the most beautiful lake views on Belton Lake. 4BR/3BA home, gameroom, second master suite or exercise room, covered patio. Over 2,900 SF. Apt. (over 900SF) also included. Rents for \$500-600/month. \$2,000 credit available to a buyer towards closing costs. Only \$245,000.

SELLER SAYS, "MAKE AN OFFER WE CAN'T REFUSE!!" Lovely 3BR/2BA near Lakewood schools. Beautifully landscaped. Lovely kitchen, charming living room with fireplace. Great master suite. Large air-conditioned storage/workshop. Priced below appraisal. \$107,900.

LAKESIDE BACKDROP is breathtaking. Wonderful 3BR/3BA, large living/dining with fireplace and wet bar. Kitchen with eating area, security system, great covered deck, hot tub. \$189,900.

SO GREAT TO COME HOME TO: Nice 3BR/2BA living with fireplace. Tastefully decorated on corner lot in Canyon Creek. Covered patio, sprinkler system. \$94,900.

DELUXE COUNTRY LIVING: Great 3BR/2BA brick on 4 acres in Academy schools. Nice living, den, dining, customized kitchen, many amenities, barn, fenced yard. \$120,000.



If sitting on a front porch watching and listening to a stream running from your own secret garden appeals to you, along with a location three minutes from teeing off #1 at Mill Creek Country Club, Old Mill Springs is the place to enjoy this unique lifestyle in the \$140's.



For More Information
On Old Mill Springs
Call 254- 947-0359

Mill Creek Townhomes



Set among the live oaks with a view of the creek on Park Drive. Spacious living area, study and that special guest! Just painted inside & out. \$119,500.



ENJOY THE VIEW OF THE MILL CREEK POND from this terrific townhome. 3BR/2-1/2BA/2Gar. Large native trees at the front entry. Roomy floor plan with decks off spacious living room and master. \$134,900. Call Sarah Lee.



Just a short stroll to golf & swimming. Approx. 2200 SF of one level Townhome comfort. 2BR/2BA with formals. Perfect for entertaining. \$139,500.

Properties By
Larry Sands



Salado Civic Square #105 947-5580
Next to the Salado Civic Center on Main St.
Larry Sands, 947-5580 • Sarah Lee, 947-5153

S&W Women's Health Series to focus on men's health.

The Scott & White Women's Health Series takes a serious look at men's health issues at its seminar Feb. 21.

The free seminar, open to men and women, will be held from 9 a.m.-noon at the Best Western Inn at Scott & White, 2526 South 31st St., Temple. A continental breakfast will be served at 8:30 a.m. with the program beginning at 9 a.m.

In addition the Scott & White Women's Healthcare

Research Program will provide heart disease screening at no cost to men ages 20 to 44, 8 a.m.- noon Feb. 21. Men do not have to attend the seminar to be screened.

Topics and speakers for the seminar are the following: The Enlarged Prostate Gland: Treatment Options; Sexual Problems in Men; What's New in Prostate Cancer Screening and Treatment presented by Jeff Waxmann, M.D., Scott &

White urologist and assistant professor with the Texas A&M University College of Medicine; Heart Disease in Men: It Starts When You Are Young; Update on Prevention and Current Treatments presented by Mark Lawrence, M.D., Scott & White cardiologist and assistant professor with the Texas A&M University College of Medicine.

The heart disease screening includes a complete cholesterol analysis and blood pressure. Men ages 20 to 44 may also be screened anytime Monday through Friday 8 a.m. - noon and 1-4 p.m. at Desk 3A at Scott & White, Temple.

For more information and reservations, call the Options for Health Education Center at (254) 724-2020 or (800) 750-6131.

Lilly Homes
Custom Home Builders
(254) 770-0020 • (800) 442-3599

Are you getting the best value for your insurance dollar?
For a Free Review
• Home • Auto • Life
• Commercial
Insurance Call
Don A. Svadlenak
102 Travis St. Holland
657-2621



Building Fine Custom Homes in Salado and the Surrounding Areas

- ◆ New Homes
- ◆ Remodeling
- ◆ Design Service
- ◆ Interior Decorator Service
- ◆ Finance Arranging



VOLNEY BUILDING COMPANY

RESIDENTIAL BUILDERS

2010 Southwest H.K. Dodgen Loop • Temple, Texas 76504
(254) 778-0329

Marketplace

Real Estate Properties for sale or lease in the area

Homes & Lots:

For Sale by owner: Many wooded lots. Woods of Salado on FM 2484 near Lake Stillhouse. 254-760-9663
Rita Seghers
tfnb

Elegant Executive home in Mill Creek. Gourmet Kitchen and formal dining room Pool and pool house with separate kitchen, office and full bath. Much more than meets the eyes!
\$260's Century 21 Bill Bartlett 254-947-5050 or 1-800-352-1183
tfn

3BR, 2 1/2 BA on 14th Fairway in Mill Creek. Interior recently painted. Split level home. Great view of golf course from living/dining room.
\$118,500 Century 21 Bill Bartlett 817-947-5050 or 1-800-352-1183
tfn

Beautiful 2 acre estate with 233 feet frontage on Salado Creek for sale. Beautiful creekside views, large trees, secluded location off of Rock Creek Dr. Price reduced to \$139,500 An excellent buy. Seller will consider offer on this one-of-a-kind property. Call Total Property Access 933-0050 or 760-4900
tfnb

Land for Sale Main St.
1/2 acre Excellent location
947-0405
tfnb

Land for Sale: 25, 50, 73 acres,
view, tanks, fenced, \$2,650 per acre.
947-5050 Rita
tfnb

An incredible view of Mill Creek Golf Course! Sip your coffee on the second floor balcony and overlook #3 and #11 green. Professionally decorated 4 BR, 3BA, Formal dining and breakfast room. Many rooms take advantage of the view. \$256,000 Rita S. Brown, Century 21 Bill Bartlett 947-5050

NORTH MAIN STREET
Commercial for lease - 360 sq. ft. building with/without additional land. Reasonable 947-0405
tfnb

For Rent :

Studio/Workshop ideal for
ARTISTS, ARTISANS, GALLERY OWNERS, COOP etc. Beautiful location. Available NOW
For information Call Darwin Britt 254-947-5575

Horse pasture for Rent.
Private, Close to town, excellent coastal. Suitable for 2-3 horses.
947-0399
2/25p

Lease space available in Salado's most unique commercial facility, "The Veranda". First Floor suite with working fireplace, perfect for executive office or retail space \$729/mo. Contact Lana at 947-5020
3/11p

Sparkling 3-yr old home in Salado. 3br 2 ba. Available March 1, \$875/mo Call 947-5050 Ask for Denver
tfn

New Mall Opening in Salado Mar. 1, 1998 Prime location on Main St. Retail Spaces available for lease. Call 254-947-9100 (Karen) or 817-924-7721
tfnb

Salado Village Voice Marketplace. The best place to sell, lease or rent your Salado Real Estate. 947-5321.

Family Reunions, Class Reunions, Weddings and other special events. Call Civic Center here in Salado at 817-947-8300 for rental fees. Air Conditioned Auditorium and kitchen facility. Up to 200 people. Also shaded park and Gazebo available. Ideal for Weddings, Showers, and Receptions.
tfn

RETAIL SPACE FOR LEASE
1,250 Sq. Ft.
Ample Storage.
Prime Location.
The Colony on Main St.
(254) 947-9560

Location! Location! Location!
Current location of The Village Potter offers access to 1/2-acre of prime Main Street real estate. Two buildings offer 2,400 sq. ft. retail and shop space. Plenty of parking front and rear. For sale by owners. Serious inquiries only Call 947-0281
tfnb



The Bluffs

At Millcreek

Imagine homes that fit you're lifestyle. Award winning custom designs from the 170's, nestled in the picturesque setting of Salado Texas. A beautiful historic resort community, which offers an 18-hole Robert Trent Jones Jr., designed golf course, quaint coffee shops, fabulous fine dining & fascinating fun shops. All along the shimmering spring-fed Salado Creek.



For More Information
On The Bluffs At Millcreek
Call TOLL FREE 888-947-1222



Trees! Quiet Arrowhead Dr. setting. Great home for peaceful, close-to-golf-course, retirement. 3/2/2 recent renovations, almost all interior. \$139,900.



SALADO-STYLED CHARM! Antique timbers, beaded wood interior walls. 2-story ceiling heights, cozy fireplace and sunroom, just a few of the features to see. PLUS a RARE ASSUMABLE LOAN with less than \$11,500 (Buyer Qualified). Call Sarah Lee. \$142,500.



Quiet cul-de-sac, beautiful live oaks, custom-built home. Perfect for entertaining with decks overlooking large privacy-fenced lawns. Huge master bedroom with fireplace, one of the many special features in the 2600 + SF home. \$159,500.

Call Sarah Lee, Realtor
947-5580
947-1011 • 760-3181



Properties By Larry Sands
Selling Historic Salado
Salado Civic Square, #105
(next to Salado Civic Center)



HOMELAND MORTGAGES

We help people solve loan problems!



L.D. & Molly Kirk
(254) 947-4475
213 Mill Creek Dr #115 Salado, TX 76571

County to host clinic on tree health

by James M. Davis
Co. Ext. Agent

Bell County will be hosting one of four Tree Health Conferences held across Texas in 1998. The Central Texas session will be held March 10 from 8 a.m.-4:30 p.m. at the Bell County Expo Center in Belton. The morning session covers oak wilt management, proper pruning techniques, and common insect problems of trees and shrubs.

Afternoon session topics include wildscaping, fertilization of trees and shrubs, and tree evaluation and hazard trees - root and butt rots. On-site registration opens at 8 a.m. with a fee of \$35. Advance registration is \$25 and covers handout materials and lunch. For advanced registration, make checks payable to Tree Health Conference, Attn: James Davis, Texas Agricultural Extension Service, 1605

North Main, Room 102, Belton, TX 76513.

Similar programs for tree professionals are being offered at other locations this spring at Dallas, Lubbock and Amarillo. Performance of cattle sold by commercial feedlots in December was not as good as recent years for the month, according to the "Kansas State University Extension Animal Science and Cooperating Feedyards" monthly summaries. The average daily gain was lower than usual while the pounds of feed required per pound of gain were more. Steers sold in December averaged 1,245 pounds, 8 pounds above 1996's. The steers spent an average of 134 days on feed compared to 124 days in 1996. Average daily gain (pounds per head per day), for steers at the cooperating commercial feedlots sold in December, was 3.36 pounds compared to 3.57 pounds in 1996. The pounds of feed required to add a pound of gain (dry matter basis) was 6.49 pounds compared to 6.16 pounds last year.

Heifers sold in December averaged 1,096 pounds compared to 1,101 pounds in 1996. The heifers spent an average of 139 days on feed compared to 124 days in 1996. Average daily gain for heifers sold in December was 2.95 pounds

See County, Page 15B

NO ONE KNOWS SALADO LIKE RITA BROWN

No one knows the Salado real estate market like Rita Brown, a top sales associate at CENTURY 21 BILL BARTLETT. She has the in-depth, local expertise you need, backed by the strength of the world's leading real estate organization. So whether you're looking to buy or to sell, there's no better choice in Salado than Rita Brown, of CENTURY 21 BILL BARTLETT. Call today.



Century 21

Bill Bartlett

860 N. Main St. Salado
(254) 947-5050
Rita Brown: (254) 947-5714

1ST
COMMERCE
MORTGAGE CORPORATION

Your Friendly "Hometown" Lender
Come by and visit
No Problem Too Large

- Conventional • FHA
- VA/VHAP

Competitive Rates

Conventional	FHA/VA
30 yr. 7.250%*	30 yr. 7.375%*
15 yr. 6.875%*	15 yr. 7.000%*

We will work together to get the best mortgage for you!
417 N. Main St., Suite 204 Salado
Open 10am-4:30 pm Mon & Wed-Sat
(254) 947-5149 fax (254) 947-5148
Millie Donaldson, Branch Manager



LARGE COMMERCIAL BUILDING ON MAIN ST. Over 4,000 SF with Saltillo tile throughout and a charming, fully-equipped living quarters with quick occupancy!! Call Larry Today!!!



A MILL CREEK CLASSIC!! Let me show you this lovely 4BR/3-1/2BA/2-GAR home in Mill Creek with study, small office & more!! Granite Kitchen counters & NEW APPLIANCES are some of the extras!! Over 4,500 SF. Call Larry for a personal showing TODAY!! **\$349,500.**



NEED 5 BEDROOMS? How about 3-1/2 Baths? We have the ticket. Also, 20+ acres goes with this attractive brick traditional for **under \$300,000.**

Properties By
Larry Sands



Salado Civic Square, #105 947-5580

(next to Salado Civic Center on Main St.)

Larry Sands, 947-5580 • Sarah Lee, 947-1011

Wild Rose

New Restricted Subdivision

- Large Wooded Lots
- Highly Restricted
- Ideally Located
- Built-in Gas & Utilities



Introductory Offer!
\$15,000 per lot, buyer's choice,
First Four Buyers Only



Century 21

(254) 947-5050
1-800-352-1183

Bill Bartlett
600 N. Main St.
Box 183 Salado, TX 76571

County

FROM Page 14B

compared to 3.26 pounds in 1996. The pounds of feed required to add a pound of gain was 6.51 pounds compared to 6.22 pounds last year. Average cost of gain (dollars per cwt. with 4% shrink) including feed, yardage, processing, medication and death loss (interest costs not included) was \$55.71 for steers and \$57.58 for heifers sold in December 1997. Average cost of gain for animals sold in December 1996 was \$53.50 for steers and \$55.33 for heifers.

The USDA reported (January 30) that the total inventory of cattle and calves declined about 2% from 1997's, as of January 1. That was the second year of lower cattle numbers since the most recent peak posted in January 1996. Two years of liquidation (1996 and 1997) have pulled the U.S. total cattle count below 100 million head for the first time since 1991. Cow-calf operations continued to reduce the number of female animals held for breeding purposes. USDA reported the number of beef cows, as of January 1, was 33.7 million head, down 1.7 percent from a year earlier. The number of heifers held for beef cow replacement was the smallest since 1992, down 5.1

percent from last year and 7 percent below two years ago. Dairy cows and heifers being held as dairy cow replacements also continued to decline. USDA reported that the number of dairy cows was down 1.3 percent from a year earlier and the year-to-year decline in replacement dairy heifers was 1.8 percent, as of January 1.

The 1997 calf crop was reported at 38.7 million head, 2.7 percent smaller than 1996's. In terms of head, the size of the 1997 calf crop was over 1 mil-

lion head smaller than 1996's and the smallest since 1991. The estimated feeder cattle supply (steers and heifers not identified as being raised for beef cow replacement purposes that were not in feedlots) was almost 4 percent below a year earlier as of January 1. So as Spring approaches, feedlots and producers looking for summer stocker cattle will generally find fewer cattle of desired weights than in recent years.

RETAIL SPACE FOR LEASE
1,250 Sq. Ft.
Ample Storage.
Prime Location.
The Colony on Main St.
(254) 947-9560

Creations & Collections
formerly The Village Boutique
22 N. Main St., Salado
Now leasing spaces for quality retail shops.
Prime location on Main St. Good rates, 2 workdays per month. Opening month free of rent.
Due to open mid-March.
254-947-9100 or 817-924-7721



A Salado Dream Home Come True! Featured in Texas Homes Magazine. Antique timbers, unbelievable craftsmanship in this rare and unique Rock Creek Drive home. 23' cathedral ceiling. 2 Master bedrooms on lower level, 2 Hand-built fireplaces. Brick-floored morning room looking out to beautifully wooded lot. Owner financing available. \$349,500.

Call Sarah Lee, Realtor
 947-5580 • 947-1011 • 760-3181

Properties By Larry Sands
 Selling Historic Salado
 ★ Salado Civic Square #105
 Main St. Salado



Century 21
Bill Bartlett

Q
 QUALITY SERVICE
 AWARDS
 1993, 1994
 1996
MLS

860 N. Main St. Salado, TX 76571
(254) 947-5050 1-800-352-1183

Browse our web page: C21BBartlett.com
Residential Listings

- ★ **2BR/1BA home or investment property in Rogers.** 930 SF workshop. Fenced back yard. Wheelchair access in front. Owner will sell "as is." \$31,500.
- ★ **3BR/2BA Belton home** on nice lot in good neighborhood. \$59,900.
- ★ **Aluminum siding, tin roof on recently remodeled home.** 2BR/1BA on 1.505 ac. Great for first home or investment rental property. \$59,950.
- ★ **A super buy! Large family room, WBFP and built-in bookshelves.** Very nice home near Stillhouse Lake for only \$86,800.
- ★ **A place for your growing family!** Garden spot and sunroom on wooded 1.6 acres. 4BR/2BA. \$91,000.
- ★ **Belmont home on 8 acres near Stillhouse Hollow Lake.** 5 acres fenced separately for pasture. Two storage buildings and a horse stall. Lots of breathing room. \$98,750.
- ★ **Ten acres with Texas ranch-style Austin home!** 3BR/2BA, trees. Garage with workshop space, out-building. \$99,900.
- ★ **4BR/2BA on 1.99 beautiful acres** in the Woods of Salado. A great family home freshly painted. \$104,800.
- ★ **On FM 2484, 22+ acres of oaks, 2 barns, corral, fenced, 3BR/2BA mobile home.** Great for horses. Extra septic tank and electric system. \$115,000.
- ★ **Covered patio, garden area, 2 wells, and fruit trees.** 3/2/2 plus carport & septic for RV. Formal LR & Den. Only \$129,000.
- ★ **3BR/2-1/2 BA on 14th Fairway in Mill Creek.** Interior recently painted. Split-level home. Great view of golf course from Living/Dining Room. \$118,500.
- ★ **Traditional home in outstanding neighborhood** in Mill Creek. On quiet cul-de-sac only one block from Golf Course. Jacuzzi in Master Bath. \$137,500.
- ★ **Old farm house on 6 acres** of oak trees on the banks of Salado Creek. \$141,000.
- ★ **Elegant finishing touches throughout this Mill Creek home!** Built in 1996, features marble entry, 3-sided fireplace, alarm, formal DR. \$144,800.
- ★ **Austin stone ranch-style home on 2+ wooded acres.** Large master bedroom with huge closet. Jacuzzi. Great Oaks. \$149,500.
- ★ **Hardwood floors.** Cozy den with French doors to private deck. Large Master bedroom with office. Majestic live oaks. \$149,900.
- ★ **5BR/3BA with workshop & apartment.** On 1+ acre near Salado. \$159,000.
- ★ **Great corner lot in Mill Creek.** Over 4,000 SF. 3BR/2-1/2 BA, office, formal dining & sun room. \$225,000.
- ★ **Overlooking #3 and #11 Green.** Professionally decorated 4BR/3BA, Formal Dining Room and Breakfast Room. \$256,000.



An outstanding estate! 4,053 SF Victorian home on 30 acres on the Lampasas River, plus a 900 SF cottage. Barns, outbuildings, well, sprinkler. \$739,000.



Lovely custom home. 3BR/3BA. Special home in Mill Creek. \$165,000.



New 3BR/2BA home on large lot in Wild Rose Subdivision. Easy access to I-35. \$124,500.

Executive home in Mill Creek. Gourmet kitchen and formal dining room. Pool & pool house with separate kitchen, office and full bath. Low \$260s
Spectacular view of Stillhouse Lake. Spacious 3BR/3-1/2BA with 14' & 11' ceilings. 6.11 acres offer privacy, serenity & security. Self-contained suite. Unique pool. Separate party house. \$298,500.
Custom home in Mill Creek. Formal Dining & Living. Two fireplaces. \$309,000.

Under construction: Showplace home in a highly-restricted subdivision. Builder's pride of workmanship, quality and decor shows throughout. \$465,000.

Acreage & Homesites

- ★ **319 acres,** Bartlett. Creek, lake, trice!
- ★ **5-150 acres,** Hwy 36 at Temple Airport.
- ★ **104.9 acre tract** near Prairie Dell. Lots of road frontage. \$126,000.
- ★ **75 acres** on FM 2115 with great view.
- ★ **67 acres,** on Lampasas River, 3 mi. from Belton, Large pecan & oak trees.
- ★ **Approx. 36 acres** Fenced, good road frontage, native grass. \$76,521.
- ★ **20.9 acres** on I-35, 3 miles S of Salado.
- ★ **19.5 acres,** convenient location for home-site, with trees, pond & creek. Already has septic, water, electricity, barn. \$85,000.
- ★ **17 acres** on Amity School Rd. between Belton & Salado.
- ★ **12 acres,** Lampasas River frontage, trees.
- ★ **10 acres** 2 miles West of Salado.
- ★ **5.24 acres** on Salado Creek.
- ★ **1.6 acre lot,** Live Oak Estates, \$19,950.
- ★ **Lot in Live Oak Estates.** \$13,500.
- ★ **1.3 acres** in Mill Creek. \$39,000.
- ★ **2 lots,** Woods of Salado, \$22,000 each.
- ★ **1/2 acre lot** in Salado Springs, \$9,000
- ★ **Homesite in Morgan's Point.** \$5,500.
- ★ **2 golf course lots.** \$54,900 each.

Commercial Property

★ **Over 9,000 SF commercial property.** Very good income potential. Operating data available. Quality tenants.

★ **.8 acre,** Loop 121, Belton, \$25,000.

★ **Excellent location,** corner of FM 2305 & Woodland Trail. Only \$89,000.

★ **Antiques/Gift Shop & Tearoom in the heart of Salado.** Over 3,000 SF. Quaint building with Saltillo tile and hardwood floors. Excellent opportunity to assume established business

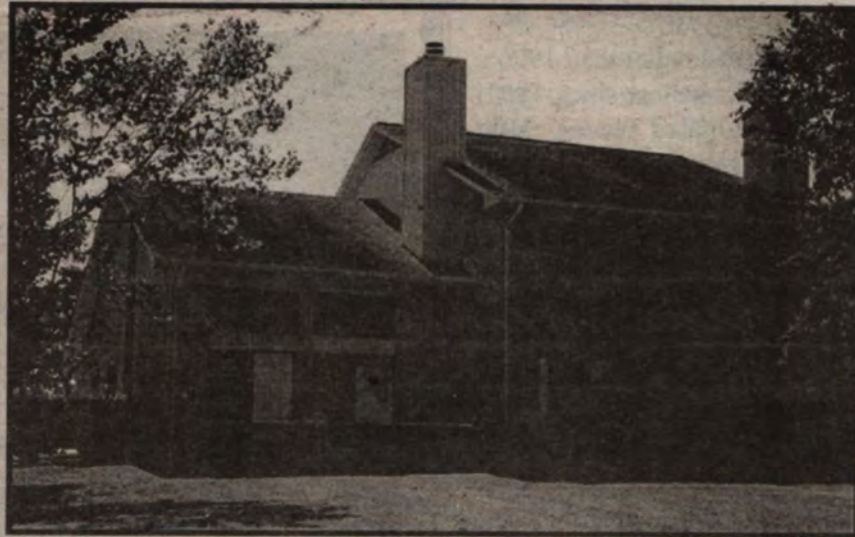
Contact these agents

- ★ Rita Brown 947-5714
- ★ Mary Kite 947-5117
- ★ Melanie Kirchmeier 947-9077
- ★ Denver Mills 947-9205
- ★ Myra Novosad 947-1619

First Texas Brokerage Co.
 In The Veranda Main St. Salado
 254-947-5577
 Visit our website at <http://www.vvm.com/texas> or E-mail us at "texas@vvm.com"

254/947-5312
 254/773-9635
 254/793-2597
 254/947-9221
 Glenn Hodge
 Linda Gosney
 Jan Hallmark
 Jerry Roberts

RESIDENTIAL LISTINGS



\$154,900: One of the best golf course views in Mill Creek. The #18 tee box hosts this newly decorated 3-2-1/2-2 townhouse. Hardwood floors, new wallpaper and paint. Home owner's fee maintains lawn.

\$194,800: Custom built 3/2/2 on 1/2-acre lot with golf course frontage. Formal and informal dining, large den with pretty fireplace. Office with built-in. Many trees.

\$170,000: Horse ready! 10 acres with arena and stalls, wash area, tack room, equipment stalls and more. Large rustic 4-3 two-story with carport and covered porches, bonus rooms and more. Florence. A Must See!

\$160,000: 12 acres with new 3-2-2 rock home with metal roof. Construction to start in March 1998.

\$95,000: In-ground pool with 3/2/2 close to Lake Belton. Covered deck and front porch. Tile floors in living and dining.

\$78,000: 10 acres with '95 Palm Harbor. Many upgrades & outside buildings. Florence.

\$89,900: 3-2-2. Salado Springs. Rock with metal roof. Construction to start March 1998.

\$87,500: Close to shopping, schools, hospitals and churches. 3-2-2 formal living and dining. Screened-in back porch, large fenced yard with trees. TEMPLE.

\$74,000: LOW, LOW utility bills due to EXTRA insulation on 3-2-2 on quiet cul-de-sac. Privacy fence and some handicapped features. TEMPLE.

Horizon Homes



\$264,500: PRICE REDUCED! Serene is the word for the feeling as you sit on the deck and watch the sun set. This 4/3/2 has all the upgrades. Split bedrooms, formal and informal living and dining. Hardwood floors, fireplace and terrific kitchen. Wonderful lot with many trees.



\$112,000: Looking for that house in the country? A must-see if you are looking for a 3-2-2 on 6.4 acres with workshop, barns and above-ground pool.

\$52,000: Located on one acre is this 2/1 frame. Picket fence, fruit trees, bluebonnets. Just off FM 2484 with easy access to Killeen or IH-35.

\$49,000: Located close to UMHB. 2BR/1BA, large lot.

ACREAGE

Hwy 317: 26 acres of woods. Could divide, owner finance. \$129,900

The Bluffs of Salado Creek. Beautiful view of Salado Creek canyons. Owner finance.

Belton: 20 acres fronting Nolan Creek. Large live oak trees. \$119,000.

FM 2115: 19 acres, long road frontage, seasonal creek. \$2,200/acre.

FM 2843: 10-75 acres with trees and deer. Excellent home sites. \$2,500-3,500 per acre.

FM 2268: Mobile Home **UNDER CONTRACT** financing, \$17,500.

River Place: 1.9 acres with river frontage. \$25,000.

West Amity: 1/2-acre **UNDER CONTRACT** none available.

FM 2115: 178 acres with frame house, 2 barns, 2 stock tanks. Owner finance. \$275,000.

Atkins Road: 25 acres, good soil. Owner finance. \$1,350/acre.

Mill Creek: Tree covered lot. \$25,000.

Woods of Salado: 2 large lots with trees. \$25,000 each.

Salado Springs: 2 tracts **UNDER CONTRACT**

Salado Springs: 3 acres with many trees, \$20,000. 2 acres, \$17,500.

Live Oak Estates: 1.79 acres with beautiful trees. \$22,500.

IH-35 & Rose Lane: 38 acres with frontage on IH-35 and Rose Lane. Many trees and creek. \$250,000.

Woods of Salado: 3.9 acres with many trees, cypress and water meter. Property is ready for building. \$35,000.

Florence/Ardice Area: Call Jan for information: 254/793-2597

Woods of Salado: 5 acres, panoramic view, woods. Has new well \$45,000.

City lots, sewer & water. For your duplex or home.

5 acres, horses ready! Wooded with lovely homesite, \$43,500.

12.98 acres with water & electricity. Many trees, can divide, \$6,000/acre. **UNDER CONTRACT**

1-1/2 acres and up. Trees or cleared, with or without improvements.

Killeen: large lot overlooking Corp. land at Stillhouse Lake. Restricted. \$11,000.

COMMERCIAL PROPERTY

Mill Creek Guest House: Six units in the Mill Creek Golf Course rental pool. \$250,000.

Main St. in Belton. 6 lots that include 3 houses, \$210,000.

3 acres fronting I-35, 1 mile S. of Salado, \$45,000.

For Lease: 1+ acre across from Winn Dixie in Harker Heights. Will build to suit.

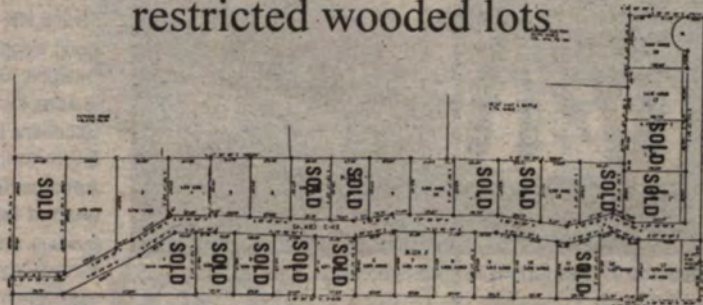
Thinking of selling your property?

Call First Texas Brokerage

for a listing appointment.

Salado Oaks

1/2 Acre & larger restricted wooded lots



1/2 mile east of Interstate 35 on FM 2268

10% Down • 10% Interest

The Bluffs at Salado Creek

