

# SALADO Village Voice

Car-Rt-Sort  
Bulk Rate  
U.S. Postage Paid  
Permit No. 50  
Salado, TX 76571

Volume XVII, Number 44, Wednesday, Feb. 26 100 Mill Creek Dr. #125 (817) 947-5321 Distributed Free

## 2nd Annual Quilt Show in Salado this weekend

Quilts of all sizes, shapes, designs and ages will be displayed at the Salado Civic Center and Central Texas Area Museum during the Second Annual Quilt Show 10 a.m.-4 p.m. Feb. 28-March 1.

The Salado Village Artist will conduct a live quilting demonstration throughout the show at the Salado Art Center, on the grounds of the Salado Civic Center. The quilt will be raffled at the end of the Art Fair in August.

Terri Ellis, American Quilter Society Certified Appraiser, will be available during the show for information about quilts. Visitors are encouraged to bring quilts to the show for her evaluation. Ellis will perform a written ap-

praisal on request for a \$25 donation.

Another addition to this year's show will be quilt blocks. Blocks provide an abundance of ideas for quilt makers and collectors. The quilt blocks will be voted on by a committee with winners being recognized during the show.

Quilts will be judged and voted on by viewers and various category awards will be given at the close of the show.

Limited space is still available for anyone interested in having a quilt or quilt block displayed at this year's show.

Contact the Salado Chamber of Commerce at 817/947-5040, PO Box 81, Salado, TX for more information about the Quilt Show.

## Trustees extend contracts of campus principals Feb. 19

by Tim Fleischer  
Editor-in-Chief

The Salado ISD Board of Trustees extended its campus principals' contracts to two years during a full agenda at its regular meeting Feb. 19.

Following a three-hour executive session, the board reconvened in open session at 12:04 a.m. Feb. 20 to vote on Thomas Arnold Elementary Principal Rod Stockstill's contract and Salado High School principal Sammy Edwards' contract.

The board unanimously voted to extend Stockstill's contract through the 1998-99 school year, following Supt. Steve Ervin's recommendation. Rita Brown made the motion and Juana K. Preston gave it a second.

The board voted 6-0-1 to give Sammy Edwards a two year contract to the 1998-99 school year, following Supt. Ervin's recommendation. Board members Bob Merrill abstained from voting on the motion, which came from Preston, with a second from Sarah Mackie.

The executive session also included consideration of a land purchase and discussion of personnel, board evaluation and superintendent goals.

The board took no action on these items in open session.

Prior to the executive session, Ervin reported that the student population now stands at 824 students, 428 in the elementary school and 396 in the junior high/high school.

He also reported that a committee was in the process of interviewing candidates for the athletic director position.

Ervin told the board legal expenses for Phase I of a grievance procedure was \$1,400 and expenses for Levels II and III of the procedure should not exceed that amount.

Ervin also reported that the District presently has \$324,000 in delinquent taxes.

The board discussed its contract with BLGY, which was terminated at a cost of \$20,000, and financial procedures.

Board president Jerry Adams iterated that the board had no knowledge

See School board, Page 14A



(photo by John Eubanks)

Brookshire Brothers #69 opened 7 a.m. Feb. 22 after purchasing IGA Village Foods last week. The new grocery store features many changes, while many things stay the same. See story and photos on Page 14A for details.

## Get your auction tickets now for Civic Center benefit

Tickets for the 1997 Salado Civic Center Auction, set for March 15, are now on sale in the first floor Civic Center office, according to Lloyd Parks, chairman of this year's premier fund raiser.

Tickets will also be on sale at Compass Bank and First State Bank in Salado.

The auction dinner that begins at 6 p.m. on the 15th, at the school cafeteria, will feature a grand meal prepared by Clem Mikeska featuring a generous serving of sliced sirloin of beef or barbecued chicken, sausage, beans, potato salad, cole slaw, relishes, home cooked bread and iced tea.

"Homemade brownies will be served for dessert and will top off the excellent meal that hopefully will get auction-goers in the proper frame of mind to do some lively bidding," noted Parks.

Auctioneer Bill Hall will start the

bidding promptly at 7 p.m. Plans call for several tables of special items for the silent auction.

Price of the meal ticket is \$7.50 each and those planning on attending the fun evening are urged to buy their reserved tickets in advance rather than at the door the evening of the event since there will be a limited number of tickets available at that time.

Foundation board members selling tickets include: Ken Clapp, Bob Cottle, Patsy Sanford, Pete Jennings, Jim Patterson, Wilma Williams and Chairman Parks.

Proceeds from the auction will be applied to the debt recently incurred for the expansion of the parking facilities at the civic center.

The Foundation Board approved doubling the size of the carpark to handle the ever increasing number of vehicles as a result of larger groups using the Civic Center.

## Deadline announced for Salado: A Jewel in the Crown of Texas

Publishers Tim and Marilyn Fleischer announced a March 24 advertising deadline for the Salado: A Jewel in the Crown of Texas magazine.


The magazine, which has 20,000 circulation, is distributed in the hotels, inns, restaurants, cafes, shops and galleries throughout the village.

Advertising costs will remain the same as in past editions: \$75 for a quarter page, \$135 for a half page and \$240 for a full page. Spot color is available for an additional charge.

**Harold's Piano Sales & Service**  
 100 Mill Creek Dr. Suite #190  
 Salado Plaza  
 Salado, TX 76571  
 817/947-4677



*Best Selection of Pianos in Central Texas  
 We restore old pianos. Call for estimate*



**TBC**  
**International, Inc.**

Accounting Software  
 Products and Services

947-4717  
 831 North Main -- Salado



**FARMERS**  
**INSURANCE**  
**GROUP**

*Symbol of Superior Service*

America can depend on Farmers  
**John Hall Insurance Agency**  
 Auto Home Life Annuities  
 Business Insurance




John Hall  
 Agent

David Glasscock  
 Agency  
 Producer

Salado's Full Service Insurance Agency  
 100 Mill Creek Dr. Suite 115  
 (Salado Plaza, next to IGA Village Foods)  
 947-3151 Fax 947-3772  
 Out of town, please call toll-free 1-800-497-8087

**Salado Civic Center's**  
**4th Annual Bar-B-Que & Auction**  
**Saturday, March 15, 1997**  
**"The Ides of March"**  
**Salado Schools Cafeteria**  
**Bar-B-Que at 6 p.m., Auction at 7 p.m.**

This Fourth Annual Bar-B-Que and Auction is sponsored by the Board of Directors of the Salado Civic Center Foundation to raise funds for the maintenance and operation of the Civic Center now in its Fourth year serving our community and our visitors.

This year, we have a special need for funds to pay for the expanded parking lot paving project. Cost of the carpark extension was \$20,000.00, and it is our hope to secure enough funds from this auction to repay half of the note this year.

We have asked our merchants to donate items that can be auctioned off after an especially fine meal. Also, to our fellow villagers, if you have items at home that you feel would be auctionable, we ask that you either bring them to the Civic Center, or call us at 947-8300 so we may pick them up at your home.

If you wish to wait until the morning of the auction and deliver the items yourself, just take them to the school cafeteria on Thomas Arnold Road between 10 a.m. and 2 p.m.

The meal will be another feast fit for royalty, featuring the famous Clem Mikeska sirloin beef, barbecue chicken, sausage, beans, potato salad, cole slaw, relish dish, homemade bread and brownies that will melt in your mouth. All this plus iced tea and coffee for the low price of \$7.50.

**Tickets on Sale Today**  
 Compass Bank First State Bank  
 Salado Civic Center Office (first floor)

**Tickets for all ages at the amazingly low price of \$7.50 each.**

*Writer gets heated about speedy roadways,  
 late executive sessions -- but not the weather!*

For many months this column has belabored the fact that the speed limits on most of FM 2484 as well as other rural roads in the Salado Independent School District have been set too high and that serious accidents between trucks, school buses and cars are just waiting to happen.

The Texas Department of Transportation lowered the speed maximums on 2484 for a couple of miles, but only well past the roadway used by the Salado buses. They have indicated they don't intend to do much more.

**DEATHS JUMP IN '96**

Now comes a report from the Department of Public Safety and TxDOT plainly indicating that traffic deaths in Texas have skyrocketed by more than 500 during 1996, which was the first full year of the new 70 MPH speed limit approved by highway officials.

A total of 3715 Texans lost their lives in '96 traffic accidents which compares unfavorably with 3172 the previous year.

Insurance industry spokesmen have long charged that these facts proved their predictions that the higher speed limits would cause deaths. Prior to the change in December 1995, the death toll was declining annually ever since

**Off the Record**  
 by Ken Clapp



**the federal government imposed the lower speed rates.**

Perhaps the most important albeit disturbing item, to local citizens, in the news release concerning this tragic news, came from Jim Francis, Public Safety Commission Chairman:

"Most of the increase (in Texas traffic deaths) has taken place on rural, two lane roads!"

This is exactly the point made by Jim Evans, transportation chief for the local school district.

"We have tried to point out the danger of the current speed limit on the rural roads in the district," Evans noted, "But I guess it has to take tragedy on a statewide basis before the highway folks take another look at what high speeds are doing to roads not built for such fast and heavy traffic."

Evans is still waiting to hear from our State Representative Suzanna Hupp, (R-Copperas Cove), who promised to not only look at the local traffic situation but also hold a public hearing here in Salado relative to the speed limits on our rural roads.

**CITIZEN INPUT**

One of our leading citizens who has attended some of the more recent school trustee sessions has come up with what appears to be an excellent idea to keep meetings from running so long and so late.

Plan would be to have the trustees handle all matters that require an "executive session"

be held before the regular meeting begins. This could be done, for example, an hour before the posted start of the open session.

All noted, of course, in the meeting notices as prescribed by the Open Meetings Laws.

This idea would certainly give visitors a chance to be present at a reasonable hour, when important decisions are announced that come from "executive" discussion sessions which are properly not open to the public.

Since the school board works for the public, this might be a more courteous way to serve one's employers rather than to keep them cooling their heels well past midnight waiting for major decisions to be announced.

**DEEP FREEZER**

On a purely personal note, this writer recently returned from Minnesota. Some days the weather-people up there noted that the wind chill was 30 to 40 degrees below zero!

Following this visit to the Land of Ten Thousand Lakes - all of which are presumably frozen, this purveyor of words is now ready to state without equivocation that there will be no more mean-spirited talk about the hot summers in Salado.

The minute the temperature gets to that horrible hundred mark in degrees and humidity, as it will do come summertime - I hereby promise to think back to the North Star State in the winter of '97 and say nothing about the local heat. Or very little.

I can easily understand why the only bird willing to remain, in such cold weather long

*See Record, page 3A*

**SALADO Village Voice**

Published every Wednesday

Location: 100 Mill Creek Dr. #125 (Salado Plaza)

Mail: P.O. Box 587, Salado, TX 76571

Phone: 817/947-5321 FAX: (817) 947-9479

Open 10am-5pm Mon. & Wed.-Fri.

Closed Tues & weekends

Deadlines: 5 p.m. Fridays

**Editorial policies:** Opinions on the editorial pages are those of the writer, not necessarily the owners or employees of the **Salado Village Voice**. All letters to the editor should be signed and have a phone number and address for verification. The editor reserves the right to reject and/or edit any letter written to him. Letters should address issues, not personalities and should be concise and constructive in approach.

**Photo policy:** Photographs submitted to the newspaper will be held at the office for 30 days after printing. After that, they will be discarded.

**Salado Village Voice Staff**

Tim Fleischer, Editor-in-Chief

Marilyn Fleischer, Managing Editor

Ken Clapp, Political Commentary

Liz Bartz, Office Assistant & Advertising Sales

John Eubanks, News & Sports

# School board

From Page 1A

of a \$20,000 breakaway fee when it voted in December to put out Request for Proposals.

"This (\$20,000 payment to BLGY) would not have happened if there were a local policy to not send out checks for items requiring a budget amendment until that budget amendment is approved by the board," Mackie said.

Board member Roger Hunter said that in the future "before we take action on a contract, perhaps the board should review that contract."

Randy Fewell reported to the board that the high school now has two Pentium-class computer labs with 50 computers, including 10 multimedia computers, as well as four multimedia lap-top computers. He also discussed plans for the school district to gain access to the Internet, which will cost \$4,481.58 to establish the link, which will allow all computers which are part of the network to access the Internet.

The monthly fee for Internet access and a Home page on the Internet will be \$435.33,

Fewell said.

During the computer presentation, Salado High students showed a humorous take on "How to Succeed at Salado High School," which included such suggestions as "stay as far away as possible from Honors Courses" and "Have a parent run for school board."

In other business, Ervin told the board that 17 Requests for Proposal were sent out to area architects as well as a construction management firm. The deadline for the return of the RFPs is March 17. The board can begin the review process at its March 18 meeting, Ervin said.

The board set May 3 for trustee elections. Candidates can apply for election to a three-year two term on the board 8 a.m.-4 p.m. weekdays at the Superintendent's Office in the Salado Civic Center. During the Salado ISD Spring Break March 10-14, Candidates may file weekdays 9 a.m.-noon and 1-4 p.m. at the Salado Chamber of Commerce Office in the Salado Civic Cen-

ter. As of Feb. 24, no one had filed for the board or picked up an application.

Two seats on the board will be decided. They are currently filled by Jerry Adams, board president, and Roger Hunter.

Adams told the *Salado Village Voice* that he had not yet made up his mind whether or not to run for the board. Adams has served on the board for 10 years. He has been elected President of the board four times, including the past two years.

Hunter told the *Salado Village Voice*, "I have no intention to run for the board at this time. It's time for new blood on the school board, not to mention the fact that next year is my son's senior year and I would like to take a more active role in his last year in school." Hunter has served seven years on the board.

The board also moved a Snow Day from March 28 to May 23. There will be no tests given on the May 23 Snow Day. March 31 will also serve as a Snow Day.

## Guess who won during Salado High School contest?

The winners of the Guess who? Quienes son? contest were:

First place (\$25), Alberta Urquiza; second place (Valentine basket), Beau Wallace; and consolation prize for most daring (free dance pass), Shane Rigsby.

The contest was sponsored by Ms. Brown's leadership class and Ms. Harmon's Spanish classes to focus on cultural

awareness, along with an understanding of our ever-changing society which we must learn to live in.

By becoming aware of their own physical and mental changes over the years, the students were able to visually see how everybody is different, but also note how even though we may look different we have similar goals and dreams for our future.

## Record

From Page 2A

enough to earn the title of "Minnesota State Bird" is the Common Loon.

All kidding aside. Minnesota is a great State. Folks friendly just like Texans. Nice place to visit but as Dorothy noted in the Oz story - "There's no place like home".

### OVERHEARD

Several readers of "Off The Record" called attention to the fact that they had heard our name mentioned prominently by a Temple radio personality who had somehow laid hands on a copy of the Village Voice and was busy commenting on this column.

**This is heady stuff for a small town observer of political obfuscation.** Not sure what all was said but apparently the liberal label was freely used. This is not too strange since some folks fuss about our left-lean at times and

others stew over the opposite direction that is found now and then in the column.

Apparently we have readers seeing what they want to see when they read. Reminds me of the week we wrote about some political foolishness going on in Washington and next day our publisher got two phone calls in quick succession.

One reader complained that this writer was too liberal and the second fussed that we were always pushing the conservative line.

**Both extremes after reviewing the same column on the same day!**

Love it! And glad radio is still a means of spreading the word since it was that medium that this writer grew up with during the dark days of the depression and second world war.

That's -30-

## Bar-B-Q Family Pak Special!

Your choice: 1 Lb. Beef or Sausage, or 1 whole Chicken; 3 Pints of Vegetables, Bread, Pickles, Onions & Sauces. Serves 4 **\$10<sup>95</sup>** PLUS TAX  
EVERY MONDAY & TUESDAY! Reg. \$12.95

### Clem Mikeska's Bar-B-Q

57th & Ave M., Temple, 774-5481

Have your oil changed at work or home.

I come to you!

Just \$20

## OIL CHANGE TO GO

Office: (817) 947-0931

Mobile: (817) 760-4324

Cary Ward

If you USE it in the kitchen,

You FIND it at

In the Kitchen

featuring classic cookware, dishes, cook-books, furniture, exotic spices, decorative accessories & a zillion gadgets.



Phone: 778-2313

1605 West Ave. H at 31st St. Temple

Hours: 9-5:30 M-F  
10-4 Sat.



ART INDUSTRY

Your Gift,  
Home  
& Bath  
Store

1416 S. 31<sup>ST</sup>  
TEMPLE  
774-8322

## Valerie Engle

Certified Public Accountant

Retirement & Estate Planning



Serving The  
Financial Needs Of  
Individuals Over Fifty

Financial Planning,  
Mutual Funds, Stocks,  
Bonds, CDs, Insurance, Annuities,  
Registered Representative Offering Securities  
Through FFP Securities, Inc. Member NASD/SIPC

Tax Reduction Strategies  
Estate Planning: ILITs, MECs, CRTs  
Retirement Planning, IRA Rollovers

1103 South 31st Street Temple, Texas 76504  
(817) 770-3022

## Women's Health Care in a Private Setting Shelley C. Giebel, M.D.



Board Certified by the  
American Board of  
Obstetrics & Gynecology

Fellow of the American  
College of Obstetricians  
& Gynecologists


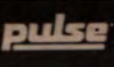
Practice Limited to Gynecology

Call today for a brochure and appointment!  
Walk-in pregnancy test available

2027 S. 61st Street, Suite 109 • (817) 773-8339 • Temple, TX 76504

**Pizza Plus** We Deliver Salado +  
 (pick-up at Brookshire Brothers) +  
**933-PLUS** 3-foot +  
**820 E. Central** Italian Sub +  
**Belton, TX** & 6 Pack +  
 Unbeatable of Coke +  
 Everyday Low Prices **\$15.69 + TAX** +  
 Minimum Delivery Small Fee

**LASTOVICA**   
**Fine Jewelers, Inc.**  
 "Known for Service"  
**Prompt In-Store Jewelry Repairs**  
 Diamond Sales Custom Casting Diamond Appraisal  
 Watch Repair Diamond Setting Jewelry Repair  
**New Location: 1202 S. 31st St. & Ave. L • Temple**  
**773-5772**

 **Compass Bank**  
 Where There's Compass, There's A Way.  
**LOBBY**  
 Mon-Thurs 9 am- 3 pm, Fri. 9 am-6 pm  
**DRIVE-THRU**  
 Mon-Fri 7 am-6 pm  
 700 N. Main St. Salado  
 (817) 947-5051  
 Xpress Banking 933-4200  
 All Compass Banks are members FDIC  
 24 Hours A Day

 **EXXON**  
**Travel Mart**  
 Open 24 Hours  
 817 - 947-5660  
 **BURGER KING**  
 Open 6a.m. - 10 P.m.  
 817-947-8060 • Drive-thru  
**Whopper Value Meal**  
**\$2.99**  
 Every day  
 **TEXAS LOTTERY**  
 ATM Inside  
**I-35 South, exit 284**



**CHILI FOR TEN?** is the question seemingly posed by the two well known Saladoans shown above as they practice preparing to serve their famous Chili Supper to the lucky highest bidder at the Fourth Annual Civic Center Auction set for Saturday, March 15, in the school cafeteria on Thomas Arnold Road. Pete and JoAnn Jennings, "dressed to the nines" above, not only prepare the fantastic feast for the high bidder at the auction but also personally serve the meal at their home on Rock Creek Drive, complete with all the formal embellishments associated with a dinner at The Ritz. The past three years bidding for the famous Jennings' Chili Supper has drawn spirited attention by those attending the Civic Center Auction and it is expected there will be no less interest this year due the number of Saladoans who have already inquired if this event will again be a part of the festivities.

**NOTICE** is hereby given that Mill Creek Golf and Country Club, an unincorporated association of persons, has made application to the Texas Alcoholic Beverage Commission for a private club registration permit to operate Mill Creek Golf and Country Club located at: Southridge Road Northside, 0.8 miles east of IH-35, Salado, Bell County, TX. Officers are: Donald John Mackie, Pres., Curtis Logan, Secretary.

## TBC adds translations to its services

TBC International, Inc., has recently added English/Spanish translation services to its accounting consulting and software services.

Claudia Scarborough has been appointed head of the Translations Department. As a result of increased demand of international business done by TBC in Latin America, she joined the TBC work force in March 1995. Since then, Scarborough has translated several Open Systems Accounting Software modules and their documentation into Spanish. She is a seasoned professional, whose experience includes teaching, translation and interpretation; among her contract are: Wilsonart International, Inc.; Professional Data Solutions, Inc.; Berlitz; Foreign Language Service; The Harberg Masinter Co.

Translations are provided with a camera ready copy and a diskette. For further information please contact Ms. Scarborough at (817) 947-4717/Fax (817) 947-4845

## Letter to the editor

Dear Editor:

Salado Cemetery Association has recently become incorporated and is now providing perpetual care. Interest from our permanent Endowment Fund as well as donations pay for this care.

I recently appeared before the Executive Board of the Salado Chamber of Commerce and requested that the Chamber Board consider adding the cemetery to the list of organizations provided for in their annual budget.

Accepting such a donation from the Chamber would in no way change the structure, or-

ganization and function of the Salado Cemetery Association, Inc. The Executive Board of the Cemetery Association would retain total control of the cemetery in perpetuity.

Monies for our Endowment Fund comes from sales of cemetery lots and from donations and memorials.

I will be happy to answer any question related to the Cemetery Association, its goals and projects.

MaryBelle Brown  
 President  
 Salado Cemetery Association Inc.

## Delisi bill would allow Texas military families to pay in-state tuition at state schools

Last week, State Representative Dianne White Delisi, District 55, filed legislation to allow military families who have served in Texas to pay in-state tuition and fee rates at state colleges and universities.

"This bill promotes an educated and ready Armed Forces by making education more accessible and by supporting the families who support our soldiers. It ensures that families who make sacrifices to serve our country may enjoy the same high quality education as other Texans."

Currently, family members of Armed Forces personnel who are serving in Texas at the

time of enrollment are generally, but not uniformly, granted in-state tuition. Rep. Delisi's bill, House Bill 1461, clarifies that family members are eligible for in-state tuition and fee rates if they have established permanent or legal residence, or registered to vote, registered an automobile, owned real property, or executed a will in Texas at least one year before enrollment.

"As Texans and Americans, we are fortunate to have our soldiers and their families as our neighbors," said Rep. Delisi. "This bill will help to ensure that they feel truly welcome in our great state."

 **The Bluff**  
**AT MILL CREEK**  
 A Luxury Townhome  
 Development with Views of the Fairways & Salado Creek  
  
 General Contractor  
**STILLWELL DISTINCTIVE HOMES**  
 The ultimate in Townhome Living in Mill Creek at the end of the 18th green in Mill Creek Golf and Country Club. Hurry and pick your lot and choose one of three plans available from 1,800 to 2,300 sq. ft. in a Texas Colonial style with all the desired amenities!! Your landscaped yard will be maintained by professionals so you can relax and enjoy golfing and sitting on your covered patio and watching the fish swim by from on top of The Bluff at Mill Creek. Call us today for a private showing of our 44 -- 9 -- remaining homesites.  
 Exclusively Marketed by  
**Properties by Larry Sands**  
 (817) 947-5580  
 

# Salisbury earns Whataburger Scholar-Athlete of the Week Award

Kurt Salisbury, a senior at Salado High School, has earned the prestigious Whataburger Scholar/Athlete of the Week Award from among high school seniors nominated by coaches throughout Texas.

More than 1,100 high schools are competing for the award during the 1996-97 school year. Kurt was nominated by coach Alan Haire.

"Kurt is an all-around leader," Haire said. "He's first in his senior class and, for two consecutive years, he's been All-District in basketball. He's also a great role model for our younger students."

With a grade average of 107.25, Kurt is class valedictorian, has served as class president for three years, made All-Region Band for two years, and was an alternate to the State Math Team. He's also achieved All-District in the One-Act Play.

In basketball, Kurt, a 6-foot forward, has been named first-team All-District, and has been named team Most Valuable Player. In addition, he's been named All-District second-team in football, and for three years has been a regional golf qualifier.

One of Kurt's biggest fans is his dad, Larry, who coaches the Salado varsity girls basketball team.

Kurt draws high marks as



Kurt Salisbury

both an athlete and a son. "I'm more proud of him as a parent," Larry said. "He made the commitment and paid the price. He lived in the gym and worked for this (senior) season the past two years."

Fox Sports Southwest, a cable television sports channel, featured Kurt on the High School Extra Program Feb. 23 and 24.

To be nominated for the Whataburger Scholar/Athlete of the Week Award, Texas high school coaches submit profiles of their outstanding senior scholar/athletes from their respective schools in all University Interscholastic League sports, such as football, basketball, softball, tennis, volleyball, track and field, and baseball, among others, to the High School Extra Program. Award criteria include the student's grade average, senior class ranking, their sport(s), honors/awards, and outside hobbies/interests. The nomi-

nating process is overseen by Dr. William Farney, U.I.L. director in Austin.

"We're proud to recognize the accomplishments of students like Kurt Salisbury who have worked very hard in school," says Jeff Nordstrom of Whataburger's marketing department. "We congratulate their teachers and coaches for their guidance."

In June 1997, Whataburger will present a \$2,000 scholarship to the top boy and girl from among the weekly award winners of that period.

Headquartered in Corpus Christi, Texas, Whataburger Inc. was founded in 1950 by Harmon A. Dobson and, now, under the leadership of Tom Dobson, the founder's son, generates more than \$500 million in revenues annually and employs more than 8,000 young people throughout its more than 520 restaurants in seven states and Mexico. Since its founding, Whataburger Inc. has been a major supporter of education and athletics throughout Texas.

**C**ONTRACTORS  
**I**NSURANCE  
**A**GENCY



SERVING CONTRACTORS SINCE 1978

JAY GARRETT, AGENT & CONSULTANT

Insuring Only Contractors Across the State of Texas

703 N. Main • P.O. Box 59 • Belton, Texas 76513

(817) 933-7676 • Fax (817) 933-7674

## Trust Your Eye Care Needs to the Eye Center

The Eye Center provides a complete range of services including:

- No-stitch cataract surgery
- Complete eye exams
- Near-sightedness
- Contact lenses
- Correction Surgeries

773-7785

Mark F. Hollingsworth, M.D.

Ophthalmologist

Donald F. Semler, O.D.

Contact Lens Specialist



of Central Texas

1817 S.W. H.K. Dodgen Loop Temple

CONTACT  
LENS  
REPLACEMENTS



at THE  
PHARMACY

Save

30% to 60%

Optinet

Village Pharmacy  
100 Mill Creek Dr.  
947-3185

6 Months  
Same as Cash

(With Approved Credit)

Free Estimates

Specials

Custom Drapery  
by Carole Fabrics

20% off

Levolor Wood Blinds

50% Off

(through February)

Armstrong Prevail Carpet  
\$2.22 Sq. Ft.

Carpet One  
Temple

817-742-1774

Hours: 9:00-5:30 M-F;

10:00-2:00 Sat

121 N. 31st St Temple

(across from Grandy's)

Bigelow



## Local A&M students honored

Texas A&M University has named its honor students for the 1996 fall semester, recognizing several thousand students for outstanding academic performance.

The Dean's Honor Roll recognizes students taking at least 15 student credit hours who have maintained at least a 3.75 grade point ratio (GPR) out of a possible 4.0 during the most recent grading period.

A second designation, "Distinguished Student," recognizes students who earned a 3.25 to 3.27 GPR while taking at least 15 hours

Among those recognized were students from Salado:

Kyle Louis Anderson named to the Dean's Honor Roll. Kyle is a freshmen majoring in Aerospace Engineering.

Among those named on the Distinguished Students list were:

Freshman Jacqueline Suzanne Alcozer majoring in General Studies.

Freshman Kelsey Nate Johnson majoring in Aerospace Engineering.

Sophomore William Stephen Boyd majoring in Applied Mathematical Sciences.

Junior Diana Rene Dunnahoo majoring in Interdisciplinary Studies.

## Salado High School Spanish Club elects four Sweetheart Princesses

The Salado High School Spanish Club members voted for one girl from each of the grades 9-12 to represent them as "Sweetheart Princess."

9th grade: Claudia Aguilar; 10th grade: Crystal Love; 11th grade: Stefanie Burns; and 12th grade: McKenzie Brown.

At the Sweetheart Dance

Feb. 15, club members voted for the "Queen of Hearts" to represent the Spanish Club. The winner was Claudia Aguilar, who then chose her escort, Jerry Warford as her king. Both will represent the Spanish Club as sweethearts until Valentine's Day next year.



First State Bank

Lobby Hours:

Monday - Thursday 9 a.m.-3p.m.

Friday 9 a.m.-4 p.m.

Drive-in:

Monday - Thursday 7:30 a.m.-4 p.m.

Friday 7:30 a.m.-6 p.m.


SATURDAY 9 a.m.-12 noon

"Where full banking services are traditional"

Main St. at Thomas Arnold Rd. Salado

817/947-5852 Member FDIC

**Salado Medical Clinic**  
**Ramiro A. Peña, M.D., P.A.**  
 Diplomate American Board of Surgery  
 Fellow of American College of Surgeons  
 Family Practice and Primary Care  
 100 Mill Creek Dr., Suite 180  
 Salado, TX 76571  
 (817) 947-9044 1-800-947-9044  
*Se Habla Español*



**KENNETH G. NORMAN**  
 ATTORNEY & COUNSELOR AT LAW  
 401 N. MAIN ST. SALADO

P.O. Box 53 Salado, Texas 76571 (817) 947-4430 (817) 947-4431

**STREETS OF SALADO**



**Catalog sales**  
 ... specializing in capturing a touch of Salado and the Southwest.  
 To receive a copy of our newest catalog call Toll Free  
**1-888-4SALADO**  
**(472-5236)**  
 or send your address to:  
 Streets of Salado, P.O. Box 1044, Salado, TX 76571



A Salado batter gets a hit while an Eagle runner tries to advance to second base during the Eagles recent loss to Copperas Cove, 3-12. (photo by John Eubanks)

## Eagles drop season opener

The Salado Eagles' varsity baseball team opened the season Feb. 22 with a 12-3 loss to the Class 5A Copperas Cove Bulldogs at their place.

The Eagles, ranked fifth in the state's preseason Class 2A coaches poll, were scheduled to play in a tournament in Gatesville beginning Feb. 27, although it may be rained out.

Salado led Cove 3-1 after scoring three runs in the top of

the third. But the Bulldogs came back to score at least five runs in the bottom of the inning.

Chris Frazier was the losing pitcher, although only one of the six runs he allowed was earned. He also had four strikeouts.

"He was a little wild and we didn't help him out much," coach Melvin Bates said.

Eric Lopez and Clint Carroll collected Salado's two hits. "Clint Carroll hit the ball hard two times and pitched well the last two innings," Bates said. Marcus Williams also pitched, relieving Frazier and allowing two runs (one earned) in one inning pitched.

Bates said his team entered the game with limited practice time.

## Bell County Museum debuts Salado exhibit March 15

The Bell County Museum's new exhibit, "Capturing the Spirit of Historic Salado" explores the development of the historic village of Salado, from pre-history to the present.

There will be a free opening reception from 10 a.m.- 5 p.m., March 15 at the Salado

Civic Center in the Historical Society Board Room.

The exhibit is a joint project of the Bell County Museum and Salado Historical Society and features photography, artifacts, maps and other items.

For more information call (817) 933-5243.

MARY KAY  
 FACE TO FACE BEAUTY ADVICE

Customized  
**skin care**

Anne Marie Harwell  
 (817) 947-3159



Beautiful Natural  
 Limestone Planters  
 made here in Salado  
**Variety of Sizes available**

- 16-inch Planter with 12" hole or 3 4-3/4" holes
- 8-inch Planter (with up to three 4-3/4" holes)

Custom orders available



**817/947-8949**

Texas Limestone Landscaping  
 P.O. Box 359  
 Salado, TX 76571

Now on display and for sale at  
 Fletcher's Books & Antiques, The Royal Salamander, The Wagonseller, Hill Country Cottage Gardens, Country Boy's




## How Do Your Mutual Funds Stack Up?

How do your mutual funds stack up when compared with others? What about when compared with key financial markets? You would have to page through stacks of magazines and annual reports to accurately answer these questions. *Until now.*

A.G. Edwards can give you a free Personal Mutual Fund Analysis that gives you an accurate, clear and concise performance evaluation for more than 11,000 mutual funds and variable annuities.

Take the guesswork out of assessing your mutual funds, and call A.G. Edwards today for your *free personalized report.*



3407 S. 31st St., Suite 120  
 Temple, TX 76502-1902  
 817-773-1504  
<http://www.agedwards.com>

**A.G. Edwards**  
 INVESTMENTS SINCE 1887

Member SIPC - 1996 A.G. Edwards & Sons, Inc.

# Lady Eagles' season ends on sour note

by John Eubanks

TAYLOR -- The Salado Lady Eagles' basketball season ended like a bite of chocolate on Valentine's Day.

It left you wanting more.

The Lady Eagles dropped a 42-36 decision to the Flatonia Lady Dogs Feb. 18 in the second round of the state playoffs.

As sweet as Salado's 24-point first-round victory on Feb. 14 tasted, this game left a bitter taste.

The Lady Eagles, who finished the season with a 27-6 mark, could muster just four points in each of the last two quarters and were outscored 24-8 in the second half.

The contingent of Salado fans watched in agony as the team's 28-18 halftime lead slowly withered away in the third period.

Asked if the loss was one of the most disappointing of his career, a choked up Larry Salisbury said yes. He called it a disappointing end to a good season.

His plan in the second half was to have his girls work the ball inside. "Then we missed all those layups," he said, outside the dressing room. "When we do that, we're in trouble. Tonight, it got us."

Reflecting on the game two days later, Salisbury said, "We just played a poor second half. I don't know what we could have done differently. We missed several easy shots."

His strategy to get Flatonia to match up man-to-man and then have his team go inside on them apparently worked except for one thing: Salado's shots simply wouldn't fall. They shot 39 percent (17-43).

"I feel the best team didn't win," Salisbury said. "I don't say that because I'm the coach of Salado. If I'm sitting in the stands, I still believe that. That's the hardest part. I don't mind getting beat, if a team beats us."

Flatonia, which trailed for most of the first three quarters, finally overtook Salado, 30-28, with 1:15 left in the third. It was the Lady Dogs' first lead since an 8-5 advantage at the 1:55 mark of the first period.

Salado scored its first points of the second half, six minutes and 49 seconds into the eight-minute third period, after several shots had rimmed out.

A determined Katie Punchard finally broke the drought at the 1:01 mark, with a jumper off the glass from about 10 feet out. That tied it at 30.

After Flatonia went up 32-30 with 31 seconds left, Salado tied it again seconds later on a Liz Whiteley bucket. The quar-



Salado's Katie Punchard (right) goes for the ball against Flatonia as Liz Boyd (34) looks on. (Photo by John Eubanks)

ter ended tied at 32, after Flatonia failed to get off a shot in the last 10 seconds.

Salado began the fourth period in better shape, scoring two baskets in the first two minutes. A Liz Boyd shot at the 7:25 mark made it 36-34, Salado.

Chrystal Whiteley then scored at the 6:02 mark, after stealing the ball from Flatonia's 5-11 point guard Yolanda Grant and racing half-way down the court for a layup. That would be Salado's last points of the game.

When the athletic Grant went up high to pull down a missed Salado shot at the 4:02 mark, and the score tied at 36, the Lady Dogs spread the court to allow Grant to go one-on-one to the basket.

Punchard, who had fallen

hard on her backside while going high for a steal at the start of the fourth, lost her footing when Grant put a move on her at the top of the arc.

Although Grant failed to score on the play, 5-4 wing Ida Hall managed to draw a foul and then hit a free throw at the 3:23 mark to make it 37-36, Flatonia.

Hall missed the second free throw, but Flatonia grabbed the rebound and eventually increased its lead to 39-36 when Hall picked up a loose ball and put it in with 2:52 showing.

Chrystal Whiteley's three-point attempt with under two minutes to play was short, and Flatonia grabbed the rebound. But her sister, Liz Whiteley, stole the ball from Grant near

See Lady Eagles, Page 8A



- ☉ Elegant gifts
- ☉ Irresistible children's wear
- ☉ Unique cribs
- ☉ Beautiful custom bedding
- ☉ Maternity fashions

**Creekside Center Main St. 947-0609**

## Attend the Weekly Church Service of Your Choice

**FIRST BAPTIST CHURCH OF SALADO**  
Main St. at the Creek  
947-5465

**SUNDAY**

\*9:40 a.m. Bible Study  
8:30 & 10:50 a.m. Worship  
5:30 p.m. Evening Worship  
\*6:30 p.m. Adult Study Courses

**WEDNESDAY**

\*6:00 p.m. Adult Study Courses  
\*7:00 p.m. Prayer Service  
*\* Age appropriate activities & classes for pre-schoolers, children & youth*  
Rev. Brian Dunks, Pastor

## St. Stephen Catholic Church

5:30 p.m. Sat. Eucharist  
9:45 a.m. Sun. Religious Education Class  
11 a.m. Sun. Mass  
5:30 p.m. Sun. Eucharist (Spanish)

**On Holland Rd. South of Salado 947-8037**



**SALADO UNITED METHODIST CHURCH SCHEDULE**

Early Service	9 a.m.
Sunday School	10 a.m.
Worship Service	11 a.m.

Everyone is Invited  
Information 817/947-5482

## Prince of Peace Lutheran Church

1215 S. Wall St.  
Belton, Texas

Sunday School 9 a.m.  
Bible Study 9 a.m.  
Worship 10:15 a.m.

Robert Budewig  
Pastor

Everyone is welcome  
939-0824

## Salado Church of Christ

**Sunday**

Bible Class 9 a.m.  
Worship and Children's Bible 10 a.m.  
Evening Worship 6 p.m.

**Wednesday**

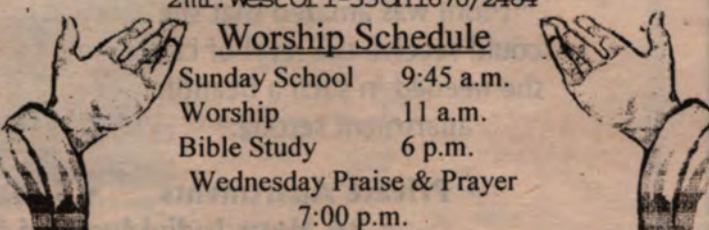
Ladies Bible Class 10 a.m.  
Bible Classes 7 p.m.  
(All ages)  
Dempsey Stripling, Minister  
IH-35 at Blacksmith Rd.  
947-5241

## Grace Baptist Church

John Warden Pastor  
2mi. West of I-35 on 1670/2484

**Worship Schedule**

Sunday School	9:45 a.m.
Worship	11 a.m.
Bible Study	6 p.m.
Wednesday Praise & Prayer	7:00 p.m.



## Presbyterian Church of Salado

10:00 a.m. Sundays at Allen Meeting Hall  
Pace Park Drive behind The Inn at Salado  
Billy P. Smith, Th.D.  
Minister, Grace Presbytery  
Presbyterian Church (U.S.A.)  
817-947-8470 817-947-9935

**SCOTT & WHITE CLINIC, KILLEEN**  
3801 Scott & White Drive  
680-1200

**Regular Clinic Hours**

*Pediatrics*  
Monday - Friday 8:30 a.m. - 5:30 p.m.

*Family Medicine*  
Monday - Friday 8:30 a.m. - 5:00 p.m.

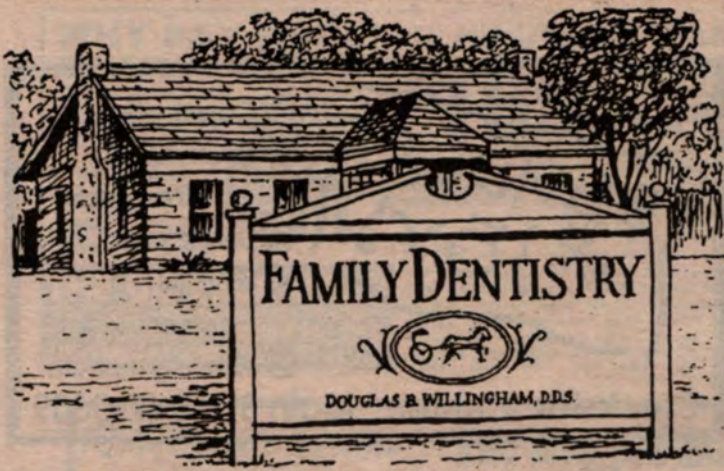
**Acute Care Clinic Hours**

*Pediatrics*  
Monday - Friday 5:00 p.m. - 5:30 p.m.  
Saturday 8:30 a.m. - 2:00 p.m.

*Family Medicine*  
Monday - Friday 4:00 p.m. - 6:30 p.m.  
Saturday & Sunday 8:30 a.m. - 4:00 p.m.

**SCOTT & WHITE KILLEEN DENTAL CLINIC**  
Hallmark Plaza, Suite A  
4400-3 East Central Texas Expressway  
699-5777

**Clinic Hours**  
Monday - Friday 8:00 a.m. - 5:00 p.m.



Main St. & Thomas Arnold, Salado • By Appointment, 947-5242

### Monday Club to meet March 3 at Salado UMC

The Monday Club will meet at 2 p.m. Mar. 3 in the Fellowship Hall of the Salado United Methodist Church. All area women are invited.

The program will be "Growing Old Disgracefully", a book review by Theresa McGhee. Refreshments will be served by Wilma Smith and Frances Beaty.

### Temple Methodists announce Mother's Day Out program

First United Methodist Church of Temple will open registration to the public for its FALL 1997 - SPRING 1998 *Preschool and Mother's Day Out* programs on March 3.

According to Director Becky Ralston, "Our program provides a variety of unique child care options to meet the needs of parents of young children. We offer several programs that include a wide range of developmentally appropriate activities for children during all the preschool stages. We have everything from a secure and loving place for baby to stay while Mom and Dad are away, to a challenging and stimulating preschool classroom."

First United Methodist Director of Children's Ministries, Kay Birkholz says, "We are very proud of the service this program has provided to the families of the Temple-Belton area for more than 20 years." Ms. Ralston noted that there are a few changes to the program for the coming year that will give the parents more flexibility in selecting part-time child care.

Families have several options including one-day, two-day, or three-day a week programs. In each of these programs, children may participate in either the mornings-only session (9 a.m.- noon) or the full-day classes (9 a.m. - 2:30 p.m.) 1997-1998 class offerings in the Mother's Day Out Program include: Nursery (ages 3 months through 11 months); Older Infants (12-17 months); and Toddlers (18-23 months). The Preschool Program classes offered are Two-Year-Olds (24 - 35 months); Three-Year-Olds (36 - 47 months); and Four-Year-Olds (48 months and up). Class assignments are made according to the age of the child as of Sept. 1.

Monthly tuition fees for the Mother's Day Out Program (Nursery, Older Infants, & Toddlers) are as follows: for the one-day Monday program, \$50 for mornings only and \$60 for the full day program; for the two-day Tuesday/Thursday or Wednesday/Friday Programs, \$75 for mornings only and \$95 for the full day program.



### LEGAL BRIEFS

By Noel Cain, Attorney-Broker\*

#### LIVING TRUSTS

I recently received another one of those mailouts which promotes the use of living trusts as the ultimate estate planning tool.

Before blindly accepting the claims of promoters of living trusts, one should consider some of the reasons not to set up such a trust. A few of the reasons are

- the estate may not be large enough.
- greater legal and administrative expenses.
- probate of small estate is efficient and inexpensive in Texas.

Next time, why a living trust?

\* Not certified by the Texas Board of Legal Specialization

**Noel R. Cain**  
831 N. Main St.  
Salado, Texas  
817-947-4030

**PIDDLERS HILL SUPPLY**

"Your Friendly Country Hardware Store"  
Pipes • Fittings • Tools • Bolts • Irrigation

**Official Dealer** 817-939-8322  
**RANCH HAND EQUIPMENT** East Loop 121 Belton, TX  
Between I-35 & Little River Rd.

**Victorian Renovators of Texas**  
VICTORIAN HOUSES FOR SALE. TO BE MOVED.  
Michael Balch  
(915) 643-4241  
(915) 647-6455

**REACH 40,000,000 INTERNET USERS AND SELL YOUR PRODUCT or SERVICE ON THE INFORMATION SUPER HIGHWAY!**

- Reach 40,000,000 Internet Users
- Show Your Product In Full Color Graphics
- Immediate Response
- Don't Miss This Once-In-A-Lifetime Offer!

**INTERNET CONSULTANT**

**YES, I WOULD LOVE TO ADVERTISE MY PRODUCT OR SERVICE TO 40,000,000 INTERNET USERS! For More Information Cut and Mail to:**

Name _____	Title _____	Company _____
Street _____		
City, State, Zip _____		
Bus. Phone _____	Home Phone _____	
Type of Business _____		

Ad Net Services  
P.O. Box 481  
Salado, TX 76571

### Lady Eagles — from Page 7A

halfcourt and raced downcourt, making sure she did not lose the ball.

As luck would have it, however, she missed the layup. To add injury to insult, she fouled Hall, who had grabbed the rebound.

Hall's free throw with 1:01 to play made it 40-36. Grant, who scored a game-high 16 points, capped the scoring with two free throws at separate times in the last 11 seconds.

"We had some honest to goodness breaks," Flatonia coach Fred Libby said. "They missed some easy shots in the third quarter. I feel sorry for them. They missed some shots they will never miss. Tonight, the breaks just went our way."

Flatonia shot 11 free throws in the final quarter, making four. Salado, which made both of its first-half free throws, didn't shoot a single one in the second half.

The Lady Eagles' first free throw occurred in the first quarter, which ended with them leading 9-8. Their last free throw came with 24 seconds left in the first half when Leah Davis sank it to complete a three-point play and give her team a 26-18 lead. It was her 11th point of the quarter and gave her 13 for the half. She finished as the team's leading scorer, despite not scoring in the second half.

Salado capped the first-half scoring with eight seconds re-

maining when Chrystal Whiteley stole the ball and dribbled halfway down the court for a layup.

The 6-2 Davis and 6-0 Liz Boyd scored Salado's first 12 points of the second quarter. Boyd, who finished with eight points, scored the first points of the quarter by making a nice move to get a shot over 6-0 Earland Williams.

Salado scored eight straight points that quarter before Flatonia finally scored with 4:59 left in the quarter. The Lady Eagles would outscore Flatonia 19-10 that quarter, scoring more points in those eight minutes than they would in the other three quarters combined.

**REPORTER'S NOTE-BOOK:** The most memorable moment of the game for this reporter occurred in the aftermath of Liz Whiteley's missed layup with 1:25 remaining.

Afterward, Chrystal Whiteley put her arm around big sis Liz as they walked downcourt.

What a nice moment that was.

Mr. Whiteley, the girls' father, may have summed up the game while consoling coach Salisbury afterward. "God put a lid on the basket."

Someone once said that the little losses in life prepare us for the bigger ones.

**Best Value in Town for Senior Care ...**

# WILDFLOWER HOUSE

A Licensed Assisted Living Residence

"Mom was amazed that she could receive the level of care she needed in such a beautiful apartment setting."

- Private Apartments
- 3 Meals a Day
- 24 Hour Individualized Care
- Secure Building
- Pets Welcome

**706 Red Coat Dr. Temple (Off Airport Road)**  
**Sandi Wicker**  
**(817) 742-1581**

We Welcome Your Visit Any Time.

Licensed Type B Personal Care Facility



# Sales & Services

## SERVICES:

**Connie's Cuts** - Connie Hall, formerly of Totally Haire, is now open. Call for appt. 947-5804 3/5p

**Affordable Health Insurance** for individuals and their families. 1-800-595-6959. Underwritten by Mega Life and Health Insurance Co. M/TX17. **Trees, Shrubs & Landscaping, Pruning, Removal and Hauling.** Flower beds, general yard work, top soil. Major credit cards accepted. **Call Victor Marek at 947-030324** Hr. Emergency Service **Storage Space in Salado** 8x12, 16X24, and up. Some drive-in doors. **Call Salado Storage 947-5575** tfnb

**ACREAGE MOWING**  
Any size, Fast service  
Call Ken 1-800-930-4707

**House Cleaning Done**  
Reasonable Call Debbie 939-7127 or Sue 939-1724  
Beeper # 718-9405

**Need Information?**  
**Meals on Wheels**  
Call Dick or Dorothy Westlake  
947-0238

**WANTED TO BUY:** Gold, Silver, Coins, Currency, Diamonds, Hummel Plates, and Swarovski Crystal. Silver Eagle, Killeen Mall. Phone 1-817-690-2300

**Will Babysit evenings/weekends** Give me a call! Melissa Oborski 947-3631.

**YARD WORK WANTED**  
Mow, Weed eat, Trim, Flowerbeds, **Salado Hardware** 947-8600

**WE BUY ALUMINUM** cans at Salado Hardware 947-8600

**Expert Alterations/tailoring**  
Call Hope 947-4773

**Salado Plumbing**  
We Are Ready  
Repairs  
New Home  
Construction  
947-5800



**BONNIE'S CLEANING SERVICE**  
has great service and makes it just the way you like it.  
Guaranteed to please.  
**939-8685**

**Residential Cleaning Service**  
Weekly, Bi-Weekly, Monthly or 1 Time cleaning.  
I have references.  
Temple • Belton • Salado  
Call Diane  
**947-3645**

**TRANSLATION SERVICES**  
ENGLISH/SPANISH  
817-947-4717  
TBC INTERNATIONAL, INC.

**For Sale:**  
**Avon Products:** Call Ginny, 512-746-2172, Avon independent sales representative, after 7 p.m. 3/19P

**For Sale: 1979 Dodge Utility Pickup Truck** w/ side storage compartments. Owner will carry note with 25% downpayment. \$2,950. Call 947-3030.

**1983 Ford F-100, SWB,** step-side. New black paint, chrome wheels, 6-cyl., 3-speed. Must sell. \$2,500 OBO. 947-3317.

**Dinette set, table with tile top,** pull out leaves. Ideal games table. 4 chairs with upholstered seats. Excellent condition. \$375 947-8208

**Executive desk \$195,** round conference table \$180, Broyhill dresser with mirror \$195. Apartment size almost new range. \$100, 1984 Citation II \$650 Car runs good. Call 947-5579

**1970 GTO 455 Cu. Inch.** (One of the last "muscle" car) \$3,600 Call 947-5579

**Many "pick-up" gifts under \$5 and \$10** at A.K. Treasures 401 N. Main St./Salado 2/26b

**Good Prices on Ram's skulls** at AK's Treasures Excellent condition 401 N. Main St. 2/26b

**Mexican hand-blown glass** with pewter base table centerpeice at AK's Treasures 401 N. Main. St./Salado 2/26b

**New Arrival of lovely decorative crosses.** AK's Treasures 401 N. Main St./Salado 2/26b

**25% off Polish lead crystal.** AK's Treasures 401 N. Main St./Salado.

Reduction on Franciscan Pottery AK's Treasures 401 N. Main St./Salado 2/26

**Help Wanted:**  
**\$1,000 Possible Typing.** Part Time. At Home. Toll Free 1-800-218-9000 Ext. T-9438 for listing. 2/26p

**Part-time Waitstaff** \$5/hr. plus tips & employee meals. Apply in person at Cathy's Boardwalk Cafe 2/26b

**Single Mom looking for evening and weekend babysitter.** Needs to be flexible, caring and understanding. Contact Dawn before 2 p.m. M-F 947-0815

**Persons wanted to own** and operate retail candy shop in Salado area. Low investment. For information call Mrs Burden's Gourmet Candy Company Dallas, TX 972-991-8239

**Persons wanted to own** and operate retail candy shop in Salado area. Low investment. For information call Mrs Burden's Gourmet Candy Company Dallas, TX 972-991-8239

**Persons wanted to own** and operate retail candy shop in Salado area. Low investment. For information call Mrs Burden's Gourmet Candy Company Dallas, TX 972-991-8239

**Persons wanted to own** and operate retail candy shop in Salado area. Low investment. For information call Mrs Burden's Gourmet Candy Company Dallas, TX 972-991-8239

**Persons wanted to own** and operate retail candy shop in Salado area. Low investment. For information call Mrs Burden's Gourmet Candy Company Dallas, TX 972-991-8239

**Persons wanted to own** and operate retail candy shop in Salado area. Low investment. For information call Mrs Burden's Gourmet Candy Company Dallas, TX 972-991-8239

**Persons wanted to own** and operate retail candy shop in Salado area. Low investment. For information call Mrs Burden's Gourmet Candy Company Dallas, TX 972-991-8239

**Persons wanted to own** and operate retail candy shop in Salado area. Low investment. For information call Mrs Burden's Gourmet Candy Company Dallas, TX 972-991-8239

**Persons wanted to own** and operate retail candy shop in Salado area. Low investment. For information call Mrs Burden's Gourmet Candy Company Dallas, TX 972-991-8239

**Persons wanted to own** and operate retail candy shop in Salado area. Low investment. For information call Mrs Burden's Gourmet Candy Company Dallas, TX 972-991-8239

**Persons wanted to own** and operate retail candy shop in Salado area. Low investment. For information call Mrs Burden's Gourmet Candy Company Dallas, TX 972-991-8239

**Persons wanted to own** and operate retail candy shop in Salado area. Low investment. For information call Mrs Burden's Gourmet Candy Company Dallas, TX 972-991-8239

**Persons wanted to own** and operate retail candy shop in Salado area. Low investment. For information call Mrs Burden's Gourmet Candy Company Dallas, TX 972-991-8239

**Persons wanted to own** and operate retail candy shop in Salado area. Low investment. For information call Mrs Burden's Gourmet Candy Company Dallas, TX 972-991-8239

**Persons wanted to own** and operate retail candy shop in Salado area. Low investment. For information call Mrs Burden's Gourmet Candy Company Dallas, TX 972-991-8239

**Persons wanted to own** and operate retail candy shop in Salado area. Low investment. For information call Mrs Burden's Gourmet Candy Company Dallas, TX 972-991-8239

**Persons wanted to own** and operate retail candy shop in Salado area. Low investment. For information call Mrs Burden's Gourmet Candy Company Dallas, TX 972-991-8239


**Persons wanted to own** and operate retail candy shop in Salado area. Low investment. For information call Mrs Burden's Gourmet Candy Company Dallas, TX 972-991-8239

**BLUME**  
LAWN SPRINKLER SYSTEMS  
P.O. Box 21503 • Waco, Tx. 76702-1503  
1-800-615-5913  
Waco (817) 666-0773 Fax (817) 666-0788  
Gary Prince L.I. #5612

**Clawson Disposal Service**  
offers great garbage service at a competitive price. Containers & curbside recycling also available.  
**1-512-746-2000 (call collect)**



Septic Systems Water/Sewer Lines  
Owner/Operator Dennis W. Wideman  
**K & D Backhoe Service**  
Beeper 774-3902  
P.O. Box 1191 Salado, TX 76571  
Mobil (817) 760-0017 (817) 760-3633



**Farr's Trucking**  
947-0628  
Pager 774-0688  
939-0129 • Pager 774-0074  
FREE ESTIMATES  
Salado, Texas  
Topsoil • Sand • Gravel  
Crusher Fines  
All Types of Hauling  
House Pads • Yards  
Lot Clearing  
All Types Tractor Work

**947-5579**  
**Salado Electrical Service Company**  
Home & Business Repairs & Service  
Jimmie & Nadine Gidley



**BICKEL'S PAINTING and WALLPAPER SERVICE**  
"Free Estimates and Quality Work"  
Ed Bickel 817-780-2256



**Subscribe Today**  
To receive 52 issues of the Salado Village Voice, fill out this form and mail with a \$20 payment to Salado Village, Voice, P.O. Box 587, Salado, TX 76571.  
Name: \_\_\_\_\_  
Address: \_\_\_\_\_  
City: \_\_\_\_\_  
State: \_\_\_\_\_ Zip: \_\_\_\_\_

**TREE TRIMMING**  
should not be left to amateurs. We observe correct procedures, disinfecting saws, painting cuts and have 12 years experience in this area. We are fully insured and give FREE ESTIMATES.  
**Red & White Greenery**  
1-800-930-4707

You can run an ad this size every week in the *Salado Village Voice* for under \$8 per issue.  
For more information, call 947-5321

**Welders Supply Company**  
"Everything for Welding"  
**(817) 939-1823**  
626 East 6th Avenue, Belton  
Fax: (817) 939-2558 Lee Roy McGregor, Owner

**Christian Farms welcomes  
Larry Gatlin Feb. 27 at Expo Center**

Please join Christian Farms-Treehouse, Inc. for a fundraiser "An Evening with Larry Gatlin" 7 p.m. Feb.27 at the Bell County Exposition Center, Belton, TX. Dinner and program are \$50 per person. Please call (817) 933-9400 for reservation information.

**Diplomas awarded to 3,300  
at A&M, including Saladoans**

Diplomas were awarded to more than 3,300 Texas A&M University graduates during December commencement ceremonies.

The degrees were presented at three separate ceremonies. Featured speakers at the ceremonies were Carol Surles, president of Texas Woman's University in Denton; Walter H. Criner Sr., president and chief executive officer of Criner-Daniels and Associates Inc., Houston; and the U.S.

Rep. Greg Laughlin, R-Texas.

Among those receiving degrees were Saladoan Emil Daniel Bethke graduating cum laude with a Bachelor of Science degree in Entomology.

Also graduating was Alithea Lynn Berger graduating with a Bachelor of Business Administration with a major in Accounting.

**Lawyers sponsor coloring contest**

The Bell County Young Lawyers Association has implemented a Coloring Contest at the Belton, Salado, and Temple elementary schools.

The Bell County Young Lawyers Coloring Contest is a contest for third grade students, to encourage them to learn about the law. The program provides each student with a "Luis Goes to Court" coloring and activity book to help them learn more about the law.

**Baseball playdays  
set March 1 & 6**

Salado Youth Baseball Association will hold "Playday" 2-5 p.m. March 1, and 6-9 p.m. March 6, at Hodge Field.

Children that did not play in Salado last year need to attend one of these "Playday" sessions. Participants moving up to a new division also need to attend.

If you need more information call Cindy McKee at 947-9681.

**LONE STAR GRADING  
& MATERIALS**

**House Pads & Hauling**

Specializing In: Top Quality House Pads, Lot Preparation, Gravel Driveways & Roads

Your Outlet For: Sandy Loam Topsoil, All types Sand, Gravel & Fill Materials



All Types Dirt Work • Top Soil Installation  
Evening & Weekend Delivery Available  
**ALL WORK GUARANTEED!**  
**Billy Helm (817) 947-0149**  
**(817) 933-7902**

*Tired? Out of Time?  
Is Your House  
Suffering For It?*

**"Call" Meticulous  
Marsha's  
Cleaning Service**

**939-1785 939-6407**

*Excellent References  
Free Estimates  
Reasonable Rates*



The students may select and color any one picture from the Luis Goes to Court" book.

The picture and entry form must be received by Feb. 28, to be included in the judging.

There will also be a county-wide grand prize winner. The winning picture will be published in the Bell County Young Lawyers Association's newsletter.

In addition, young lawyers will be speaking to some of the third grade classes.

**Wilsonart®  
Flooring.  
Made  
to be  
lived  
on.**

*Proven Performance*

Wilsonart Flooring's high pressure decorative laminate construction makes it a perfect choice for kitchens, foyers -- just about any room in the house!

- 15 woodgrain styles
- Easy maintenance
- 10-year warranty (wear-stain-fade)
- Resists indentations from heavy furniture
- Made in the U.S.A.

**Wood-grain Planks  
\$650 per sq. ft.\***

**Stone-look Tiles  
\$750 per sq. ft.\***

\* Price includes labor and materials  
(foam pad on sub floor & planks, tiles, or combination)

**Dealer: Buchanan & Daughters Enterprises**  
*Professional Installation by Ed Buchanan*

For more information call Ed Buchanan  
**947-5992 • 718-4217**

**15 wood-grain & 15 stone-look tile  
sample display can be seen at  
Salado Hardware**  
*I-35 S access & Cardinal Lane*

**Salado**




**Big, Bigger,  
BIGGEST  
Blizzards**

**99¢**

Small  
**\$1.49**

Medium  
**\$1.99**

Large  
Through March 16



**Hung'r Buster  
Combo  
\$2.99**

**Salado Dairy Queen**  
Exit 284 & I-35 Open Daily  
(817) 947-5406

# McGregor earns Eagle

Joseph Lee McGregor, son of Gary and Helen McGregor of Salado will receive his Eagle Scout award at a Court of Honor to be held at the Church of Jesus Christ of Latter-day Saints in Temple at 7 p.m. Feb. 26.

As a member of Troop 108, he has earned 23 merit badges as well as the On My Honor and Arrow of Light awards.

Joseph has been in scouting since the age of eight. He has served as scribe, quartermaster, assistant senior patrol leader and senior patrol leader.

His Eagle project was organizing a work crew to improve the campgrounds at Camp Kachina, a Girl Scout camp. The project entailed about 140 hours of labor.

Joseph, 18, is a senior at Salado High School and has participated in several UIL events, including editorial writing, persuasive speaking and current events.

He attends the Church of Jesus Christ of Latter-day Saints in Temple where he is an active member of the young



Joseph Lee McGregor

men's program. He serves as a counselor in his Priesthood Quorum and attends early morning seminary, a four-year Scripture study course for high school students.

McGregor is the grandson of Lee Roy and Marjorie McGregor of Holland and Juan G. and Sara Hernandez of Belton.

## Trauma Council present seminar dealing with geriatric issues

Emergency Medical Services respond to thousands of calls each year and a large percentage of calls are to the homes of the geriatric population. EMS has expressed the need of continuing education in Geriatrics so they can better serve the community.

The Central Texas Trauma Council has prepared a day long seminar exploring a list of topics including Psychological Changes, Assessment, Medical Emergencies, Trauma, Elder Abuse and Pharmacology all centered around the geriatric patient.

The Seminar is being offered 9 a.m.-5 p.m. March 1 with registration beginning at 8 a.m. The seminar is being sponsored by the Central Texas Trauma Council and will be held at the Options Learning Center.

The seminar is being offered to all health care professionals and will carry 6.0 CEUs for EMS and 6.6 hours

### Stu Council auction Feb. 27

The Salado High School student council will hold its silent auction 5:30-7 p.m. Feb. 27 at the school cafeteria. The bidding ends at 7 p.m.

The Junior class will hold a chili supper, beginning at 5:30 p.m., for \$3.

**HARD WATER PROBLEMS? THE SOLUTION!**

**Julie & Bob Weber**  
Independent Distributors GMX  
Kerrville, Texas  
**1-800-270-2252**  
90 DAY MONEY BACK GUARANTEE

- Prevents Scale Build-up
- Progressive removal of Existing Scale
- No Maintenance
- No Salt • No Chemicals
- No Electricity • Lower Cost

**PENNZOIL** Performance. Protection. Quality.™ **MINITMAN** 10 MINUTE OIL CHANGE SINCE 1978

<b>SERVICES PROVIDED</b>	<b>ALL MAJOR BRANDS OIL AVAILABLE</b>	<b>SERVICE INCLUDES</b>
<ul style="list-style-type: none"> <li>• Oil Changes</li> <li>• Transmission Services</li> <li>• Radiator Drain &amp; Refill</li> <li>• Fuel Injection Cleaning</li> <li>• State Inspection (Belton Only)</li> </ul>	We Accept • DIAMOND SHAMROCK • • VISA MASTERCARD • • American Express • • Discover Card •	<ul style="list-style-type: none"> <li>• Up To 5 Quarts Oil</li> <li>• New Oil Filter</li> <li>• Chassis Lube</li> <li>• Check &amp; Fill All Fluids</li> <li>• Inspect Belts, Hoses, Exhaust</li> </ul>

**BELTON**  
1702 NORTH MAIN - 933-0526  
HOURS: MON-FRI 8 A.M.-5:30 P.M.  
SAT. 9 A.M.-1 P.M., CLOSED SUN.

**Serving**

Individual Investors since 1871.

Stocks	Tax-free bonds
Mutual funds	CDs
Bonds	Money market funds
Government securities	IRAs

... and much more!

Call or stop by today!

Member SIPC  
**Michael K. Gunter**  
208 E. Central  
Belton  
939-5824

Serving individual investors from more than 3,174 offices nationwide.

**Edward Jones**

*"I, Dianne White Delisi, do solemnly swear, that I will faithfully execute the duties of the office of a member of the House of Representatives of the Seventy-Fifth Legislature of the State of Texas, and I will to the best of my ability preserve, protect, and defend the Constitution and laws of the United States and of this State. So help me God."*

Oath of Office taken by State Representative Dianne White Delisi, January 14, 1997.



**DIANNE WHITE DELISI** Clip & Save

State Representative  
dianne.delisi@house.state.tx.us

<p><b>CAPITOL OFFICE</b> P.O. Box 2910 Room E1.304, Capitol Extension Austin, Texas 78768-2910 (512) 463-0630 Fax (512) 463-0937</p>	<p><b>STAFF MEMBERS</b> Stacey Dillon - District Associate stacey.dillon@house.state.tx.us</p> <p>Patrick Dempsey - Capitol Associate patrick.dempsey@house.state.tx.us</p> <p>Kathleen Gardiner - Capitol Associate kathleen.gardiner@house.state.tx.us</p> <p>Phuong Huynh - Legislative Intern phuong.huynh@house.state.tx.us</p>	<p><b>DISTRICT OFFICE</b> 3500 SW H.K. Dodgen Loop Suite 100 Temple, Texas 76504 (817) 774-9888 Fax (817) 771-5775</p>
--	--	--

Clip & Save Clip & Save

Not Printed at State Expense - Paid for by Dianne White Delisi, P.O. Box 3612, Temple, Texas 76505.

**Belton Frames**  
 Custom Picture Framing & Matting  
 Art Gallery with local & nationally known artists  
 113 N. East St. Belton, TX  
 (half block north of Bell County Courthouse)  
 939-1611 M-F 9-5, Sat. 9-1  
 Lou Anne Munden, Proprietor

**BELTON CHIROPRACTIC**  
 Offering gentle care for the whole family  
  
**NOW OPEN!**  
 325 N. Main Belton  
 (817) 933-2273  
 MWF 9-1, 3-7 Tues., Sat. 9-1  
 Cheryl Lipton, D.C.  
 1982 BHS Graduate  
 1987 UMHB Graduate  
 1995 PCC Graduate

**HOLLAND PACKAGE STORE**  
 Beer • Liquor • Wine • Case Discounts  
 Hwy. 95 next to Holland Food Mart  
 Holland, Texas 657-2428

**McCormick's Vodka**  
 1.75 L 80 proof \$8<sup>99</sup>

**Berringer's White Zinfandel**  
 750 mL \$5<sup>49</sup>

Specials good February 26-March 4, 1997

**SALE**

**THE CARPET CENTER**

**Carpet**  
 Roll ends & Remnants  
 from \$4<sup>35</sup> sq. yd

**Ceramic & Vinyl Tile**  
 Small Lots ½ Off  
**Wood Planks**  
 Small Lots ½ Off

2812 IH-35 Belton  
 Across from the Expo Center  
 M-F 8 a.m.-5:30 p.m. Sat 9 a.m.-2 p.m.  
 817/939-1039



Liz Boyd, MVP



Leah Davis, 1st Team



Chrystal Whiteley, 1st Team

**Five Lady Eagles named to All-District**

By John Eubanks

The Salado Lady Eagles were well represented on the All-District 26-2A girls basketball team selected by the district's head coaches.

Five players from district champ Salado earned recognition: the MVP, two first-teamers, a second-teamer and an honorable mention selection.

"I was real pleased with getting the MVP and two on the first team," coach Larry Salisbury said. "That was about what I thought we deserved."

Second-place Jarrell had two first-team selections and a second-team pick.

Senior Liz Boyd was named the district's Most Valuable Player. The 6-0 post player was the team's leading scorer, averaging 10.0 points a game. She also led the team in rebounding with an average of 7.2 boards a game.

Boyd had the team's second-best shooting percentage, hitting 51.1 percent of her team-high 282 shots.

Two Lady Eagles were selected to the six-player first team: junior Leah Davis and sophomore Chrystal Whiteley.

Davis, a 6-2 post, was Salado's second-leading scorer (8.6 ppg) and rebounder (5.2). She also had a team-high 100 blocks. (Boyd was second with 43).



Katie Punchard, 2nd Team

Whiteley, a 5-3 sophomore guard, was the team's third-leading scorer (8.2 ppg) and led the team in three-pointers (45), 20 more than sister Liz, who was second on the team.

Whiteley had the team's best shooting percentage, hitting 50 of 82 shots for 61 percent. She also had the best free-throw percentage (75 percent) by anyone with more than 20 free throws. She hit 36 of 48.

Katie Punchard was Salado's lone second-team selection. The 5-5 sophomore wing led the team in steals (99) and assists (106). Her scoring average of 6.3 points per game was fifth best on the team.

Melissa Matthews was the lone Lady Eagle to receive honorable mention. The 5-8 sophomore wing was the team's fourth-leading scorer (7.4 ppg). She also was third



Melissa Matthews, Hon. Men.

in assists (68) and third in steals (56).

Florence freshman Mandy Shelton, a 5-3 guard, was selected the district's newcomer of the year.

**ALL-DISTRICT 26-2A MVP**

<b>Liz Boyd</b>	<b>Salado</b>
<b>First Team</b>	
Amber Sladeczek	Jarrell
Cindy Domel	Jarrell
Niki Johnson	Holland
Scherrie Moore	Hutto
Leah Davis	Salado
Chrystal Whiteley	Salado

**Second Team**

Tiffany Hester	Hutto
Teresa Olsen	Lago Vista
Heather Duke	Lago Vista
Kara Kasberg	Rogers
Ashley Hawkins	Jarrell
Katie Punchard	Salado

**Honorable Mention**  
 Salado: Melissa Matthews

**BIG TEX AUTOPLEX**

Big Tex can & will finance your car

CALL BARRY SIMPSON  
 817-933-2277  
 2323 N. Main St.  
 Belton  
 Across from Wal-Mart  
 Mon - Fri. 9-6, Sat. 9-4  
 Se Habla Español

**Classifieds work**

To place your classified ad in the Salado Village Voice, fill out the form below and mail it with payment to: Salado Village Voice, P.O. Box 587, Salado, TX 76571; or call 817/947-5321. First 10 words are \$2, 10 cents per word thereafter.

\_\_\_\_\_

\_\_\_\_\_

\_\_\_\_\_

\_\_\_\_\_

\_\_\_\_\_

Cost of Ad: \_\_\_\_\_ Number of Runs: \_\_\_\_\_  
 Total cost: \_\_\_\_\_ Amount enclosed \_\_\_\_\_

# Eagles end season with playoff loss

By John Eubanks

The Salado Eagles ended their season Feb. 20 with a 58-38 loss to the state-ranked Academy Bumblebees in a boys Class 2A bi-district basketball playoff game at Temple College.

The Eagles' season record of 19-11 betters the previous year's mark of 17-12. Salado, which placed second in District 26-2A with a 9-3 mark, had not qualified for the playoffs since 1986.

Academy, the No. 6 team in the state's 2A ranks, entered with a record of 30-3. Two of the losses occurred within a week of the Salado clash in district playoff games against a pair of Class A teams. (Academy (31-3), the District 25-2A winner, was scheduled to play Ganado (14-6) in an area-round game Feb. 25 in Seguin.

The Eagles played Academy tough in the first quarter, taking their last lead, 8-6, at the 2:55 mark of the period. The quarter ended with Academy up, 13-8.

But that lead would balloon to 33-15 at halftime, when the Bumblebees converted several Salado turnovers off the press into quick points.

"Turnovers on the press killed us," Salado coach Alan Haire said. "We knew that going in. If we turned the ball over, that would happen. But my kids came back in the second half and played hard."

Academy outscored Salado by only 25-23 in the second half, as both teams played on nearly even terms.

The Bumblebees led by 20 points at the start of the second half, 35-15, before the Eagles cut the deficit to 40-28 on Paul Mashburn's 3-point shot with 25 seconds left in the quarter.

Academy extended its 43-28 third-quarter lead to its biggest lead of the game, 57-34, with 1:40 to play on a pair of free throws.

Academy hit seven of 12 free throws in the final quarter and finished the game by hitting 11 of 18 free throws.



Salado's Chris Michna (30) eyes the ball (atop rim) that Kurt Salisbury (behind) put up against Academy. (Photo by John Eubanks)

Salado hit 10 of 20 free throws for the game, missing its only two free throws in the final quarter.

Sophomore Chris Michna, who tied Shawn Mitchell as the team's top scorer with nine points, hit only one of 10 free throws.

Roger Buckley and David Kirk each added six points. Buckley gave the Eagles their aforementioned 8-6 lead on a bucket off a steal. He also scored Salado's first basket of the second period that cut Academy's lead to 13-10.

But the Bumblebees, who forced nine first-half turnovers, went on an 18-1 run before Salado scored its second basket of the quarter with 1:17 remaining. That occurred when Michna put back a missed 3-pointer by Mitchell.

Mitchell capped Salado's first-half scoring with a pair of free throws at the 43-second mark. The Eagles were outscored 20-7 in the second quarter on the strength of its withering pressure defense.

See Eagles, Page 15A

"Come See What a Nursing Home Should Be"

## Park Place Manor

810 East 13th Avenue  
Belton, TX 76513  
817-939-1876

For all Mortgage Financing Needs,  
Call J.T. Eckstrum

### Building Your Dream Home?

Call J.T.

Partners Mortgage Services, Ltd.  
(817) 770-3003 or  
(817) 947-8366 (evenings & weekends)

**3R** Peterek's Country Meats & Czech Country Sausage

ELMER KING ROAD • P.O. Box 1353  
BELTON, TEXAS 76513  
(817) 939-8555 • (800) 965-8555

PLANT HOURS: Wed., Thurs., Fri. 8am-6:30pm  
Sat 8 am-3:30pm • Closed Sun., Mon., Tues.

We have Honey-glazed, Boneless Pit Hams  
Also, Smoked turkeys, marinated ribeyes, boneless pork loin and prime rib.  
CHOICE BEEF HALVES & QUARTERS  
• DEER PROCESSING • BARBECUE CATERING  
• REAL BEEF JERKY • WE CATER ANYTIME, ANYWHERE

\$20 storage

## BELTON STOR-IT

939-3338

**Certa ProPainters**

Not all painters are created equal

Interior • Exterior  
Pressure Washing  
FREE ESTIMATES  
817/947-3170  
(800) 462-3782, ext. 883  
Willard Bennett

For Floors Done Right the First Time See

- Wall Paper
- Carpet • Vinyl
- Ceramic • Wood
- Marble

Free Estimates

**CORIAN** Counter Tops  
By **DUPONT**

**THE FLOOR STORE**

900 East Central  
Belton, Texas 76513  
(Across from Bobby's Burgers)  
(817) 939-3502  
JEFF BOREN, Owner

**CFM Mobil**  
(Formerly S&W)

- Public Fax Service
- 39¢ Money Orders
- Western Union
- ATM Machine
- Inside Deli

**TEXAS LOTTERY**  
Play The Game Of Texas™

I-35 South, Exit 284  
817/947-5470  
6am-11pm

**Village of Salado**

Rita S. Brown  
REALTOR

When it's time to buy or sell  
Choose a LOCAL specialist!!

Salado is my specialty. Ever since I moved to Salado five years ago, Salado is what I've sold. I feel that in order to best serve my clients, I need to be an expert in every aspect of the community in which I serve. So, when you decide to buy or sell, call THE Salado Specialist.

Rita S. Brown  
Bill Bartlett

600 N. Main St. Salado, Texas 76571  
Office (817) 947-5050 Home (817) 947-5714 Pager (817) 760-8974

Century 21  
MLS

**WHY PAY MORE? COMPARE OUR LOW PRICES**  
The Best Service in Town  
Since 1980

**10 MINUTE OIL CHANGE**  
**\$16.95\*** OIL, LUBE & FILTER  
Add \$1 for Env. Disposal Surcharge with this coupon. Expires 5/26/97  
All other oils \$1.00 OFF towards regular price on full service oil change of your choice with this coupon.

**PRICE INCLUDES**  
Up to 5 qts. Pennzoil 30W oil or Quaker State 30W oil, new oil filter, chassis lubrication, check and fill all major fluid levels, air tires, check & clean most air filters, visually inspect belts, hoses, etc., attach door sticker & window static sticker AND reminder card mailed - in 10 minutes or less at no extra charge for most vehicles. **NO APPOINTMENT NECESSARY.**

**THE OIL EXCHANGE**  
Since 1980 • All Major Brands Oil Available  
57th & Scott Blvd. Temple • 778-5195  
Mon.-Fri. 8:00-5:30, Sat. 8:00-5:00

**Robertson's Hams** **The Choppin' Block**  
**EXIT 285 & IH35** **&**  
**SALADO, TEXAS**

introducing:  
**THE REPUBLIC OF TEA**  
**Whole Bean Coffees**  
**Unique Brew Devices**  
**Bulk Tea & Accessories**

**DOSSMAN FUNERAL HOME**  
"In service to our fellow man ..."

"Faith, Hope and Love. The greatest is Love."  
1 Corinthians 13:13  
**2525 N. MAIN ST. BELTON**  
**817/933-2525**



**BoTangles**  
**Styling Salon**

- Haircuts • Blow Dry Styles • Shampoo Sets
- Permanents • Dimensional Hair Coloring
- Manicures • Pedicures • Acrylic Nails

**213 Mill Creek Dr., Suite #165**  
**817/947-4747**

Schanna Culp  
Stylist/Nail Tech

Iris Dodge  
Owner/Stylist

**GRABER**  
Fine Window Fashions

**Up to 75% off Blinds**

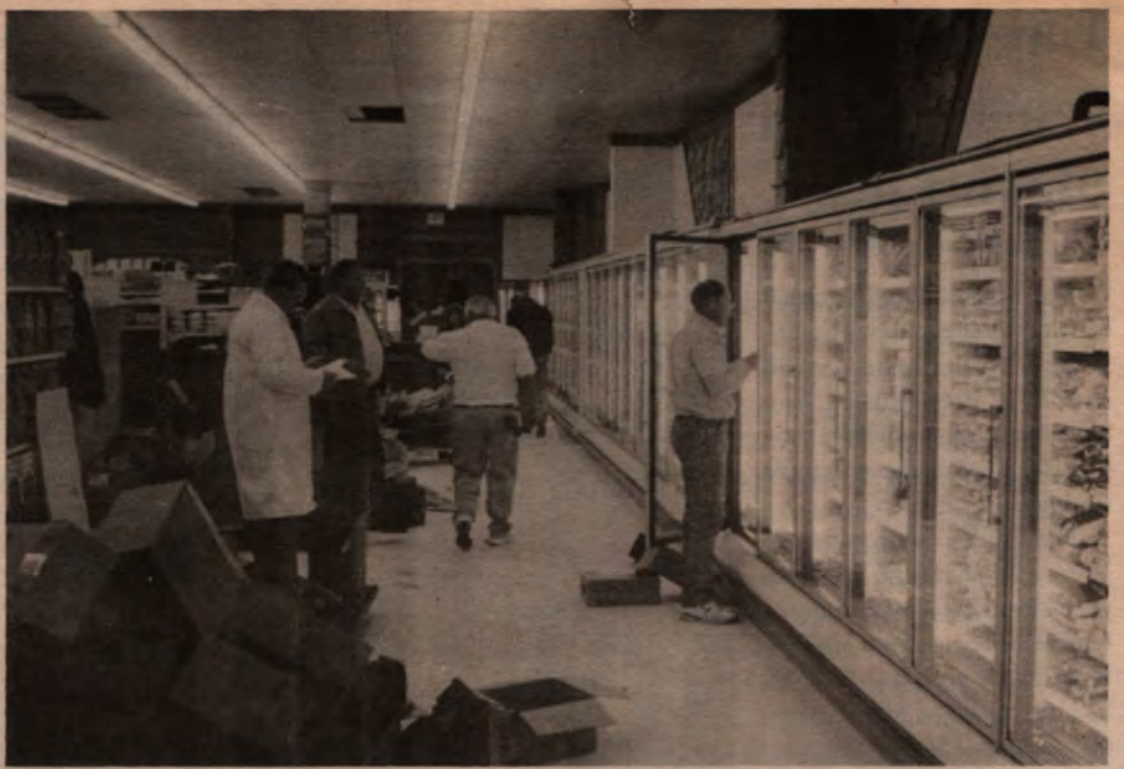
Hardwood • Ceramic • Vinyl  
Wallpaper • Carpet • Custom Shutters

Salado's Hometown Decorating Center  
Free Estimates • Free Consultations

**East Access Rd. I-35**  
**North of Harper Talasek**  
**(817) 947-0048**

Open 9 a.m.-5 p.m. Mon-Fri  
Sat 9 a.m.-12 Noon

**Salado Floors & WALLS**



(photos by Tim Fleischer)

The back wall of Brookshire Brothers is covered with 36 doors of refrigerated units. Workers are shown stocking the units before the grocery store opened Feb. 21.

## Brookshire Brothers now open for business

by Tim Fleischer  
Editor-in-Chief

Jim Evans was the first customer through the door of Brookshire Brothers #69, when it opened 7 a.m. Feb. 22.

But then again, he usually is the first customer at the grocery store on Saturday mornings.

"He's there every Saturday morning, usually waiting on me," said store director Dale Kehn. "I knew he was going to be the first one through this week."

The door of Brookshire Brothers #69 opened after an extensive remodeling and refurbishing conducted over a three-and-a-half day period. Brookshire Brothers purchase IGA Village Food Feb. 18, at which time it closed the store for renovations.

"Crews worked around the clock," Kehn said, noting that 150-175 workers, stockers and salesmen performed a miracle in the remodeling.

Among the most noticeable changes are the new refrigeration units in the store.

"The first thing we did was to take out all of the refrigeration units from the produce, dairy, meat and frozen food sections," Kehn said.

The frozen foods section now features 36 doors stretching along the back wall of the store. "This will give us about four times the amount of space as we had," Kehn said.

The new meat market includes triple-decker freezer units which double the space for fresh meats and deli meats.

An enclosed, refrigerated meat market will also keep meats fresher, Kehn said.

Double layer refrigeration cases were placed in the produce department, allowing for an expanded prepared salad and pre-cut vegetable section, as well as additional gourmet items, such as Portabella mushrooms ("We sold out of



The new produce section features a wide variety of fresh fruits and vegetables, including such gourmet items as Portabella mushrooms.



Darrell Street, of Salado, is shown above helping with the new dairy section at Brookshire Brothers. Street is a sales representative with a major food company.

those the first day," Kehn said.)

The video department was moved and expanded to include about 2,000 titles. When you sign up for a video membership, the information is also used to sign up for a Brookshire Brothers courtesy card for cashing checks.

The office was also moved and will be manned at all times for various services, including copy service, money orders, and in the future, Western Union and ATM machine.

In the renovation process, a gondola and a half were added, giving Brookshire Brothers expanded grocery and non-grocery items.

While many things have changed with the new ownership, some things will stay the same, namely the friendly staff.

District director Lester Underwood was very im-

pressed with the student staffers, Kehn said.

Kehn continues as store director; Chris Moffat is asst. store director; Jeremy Schlickeisen, night director.

Department directors are these: Stacy Kabler, meat market; John Ehret, frozen food and dairy; Ben Jordan, produce; Sharon McDaniels, non-food items and Joy Porter, bakery.

Kehn said that the store will have a formal grand opening after ironing out some of the wrinkles and completing some of the renovations and restocking. Look for an announcement in the *Salado Village Voice*.

Customer comment and request cards are available at the store.

"If we missed something, Kehn said, "let us know so that we can get it in the store."

# Kelly to wed Cassidy March 22

Sue Carter of Salado and Charles Kelly Sr. of Katy, Texas, announce the engagement of their daughter, Lara Kelly of Cypress, Calif., and formerly of Plano, Texas, to Craig Cassidy.

The couple will be married March 22 at First United Methodist Church in Salado.

The bride is a paralegal with the firm of Latham and Watkins in California.

The groom is a self-employed real estate appraiser. He is the son of Charles Cassidy of Seal Beach, Calif., and Janice Cassidy of Irvine, Calif. He also is a 1985 graduate of Los Alamitos (Calif.) High School and a 1990 graduate of Arizona State University with a degree in political science.



Lara Kelly and Craig Cassidy

## UMHB presents The Kry in concert 7:30 p.m. Feb. 28

The University of Mary Hardin-Baylor presents "The Kry" in concert at 7:30 p.m. Feb. 28 in the W. W. Walton Chapel on campus. General admission is \$7.50.

The Kry will perform contemporary Christian music from inspirational to rock. They have had three #1 singles, seven top 5 singles, and four top 20 singles.

Their most recent hits include: "I Know Everything About You"; "Unplugged";

"Little Love"; "Show Me the Way (Blind Man)"; and "Everywhere."

The group was started by Jean Luc and Yves Lajoie, French Canadian brothers from Quebec city.

The concert is in conjunction with Spring Preview Weekend on campus. Tickets to the concert are available at Book of Life, in Temple, Greater Gifts, in Belton, Joshua's Bookstore, in Killeen, and the Mabee Student Center on the UMHB campus.

**MARCH 1-2**  
**BELL COUNTY EXPO CTR**  
**Main Arena**  
**SAT 10-5 SUN 11-5**  
**A Fabulous Spring Arts & Crafts Extravaganza**  
**Adults \$3, under 12, free**  
**\* Info: (512) 441-7133**

# Eagles

FROM Page 13A

"We press for 32 minutes a game," Academy coach Jon Youngblood said. "We were concerned coming into the game, because we couldn't press for 32 minutes in all our district games because of the scores."

Salado made a brief run in the final period, scoring consecutive baskets by Michna and Kirk and Mitchell's 10-footer off the glass at the 4:18 mark to complete a 6-0 run and trail 46-34. The Bumblebees then outscored Salado 12-4 in the last half of the final quarter.

Academy, which entered the game averaging 73 points and allowing 41, had three players score in double figures. Jessie Van Sickler led the way with 15 points. Kyle Spanhel had 12 and Chad Cother had 10.



**Country Hide-Away. 84+ acres.** Rolling hills & valleys. Great views from this large country home w/ 6 bedrooms, large living/dining/kitchen with views overlooking valley below. Decks, screened-in porch, in-ground pool. Foreman's house, fenced, pens, 2 tanks & creek. Detail upon request.

**LIVE OAK TRAIL:** Country living at its finest. 5.53 acres, CR 234. Trees, trees, trees! Large 3 BR/2BA/2LA, large dining, hardwood floors, Berber carpet, fresh paint. Artist touch throughout home. 600SF deck w/ gazebo. \$159,900.



**Rare Find! Turn-of-century Victorian!** Heart of Old Town Georgetown. Large corner lot. Rock-away on the front porch. Large rooms, soaring ceilings, 6 fireplaces, 4.5BA, 4 large charming bedrooms. Call for more details. \$294,000.

**COLDWELL BANKER**

To view these properties, call  
**Glenda DuBose, GRI, CRS**  
 1-800-473-8525, ext. 112  
 512-970-1057

**RICHARD SMITH, REALTORS**  
 1701 Williams Dr. Georgetown



*RoseMatt Properties, Inc.*  
 Now located at Royal St. Commons  
 Developing RoseMatt Oaks in Mill Creek  
 Exclusive Custom Homes by Larry Lilly  
 (by Appt.)  
 817/947-0036 817/947-5708



**REALTY EXECUTIVES**  
**SANDY SCULLY**  
**773-9190**

**PRICE REDUCED:** Beautiful 2-year-old Lilly-built home. 3BR/2 large Baths. Large master suite. Formal Dining. Great 3-sided fireplace. Sprinkler system. Won't last long at \$137,900.

**SOUTH TEMPLE:** Large wooded lot in South Temple. Over 1/2 acre on cul-de-sac. Very private and restricted. Great for building your dream home. \$50s.

**NEW LISTING:** Less than 1 year old. 3BR/2BA, fireplace never used. Fenced with garden in large backyard. Belton schools. \$82,900.

947-0155 ..... 718-4949  
 1904 W. Ave. M, Temple



**The Historic "Vickrey House."** Listed on the National Register! 1.24 acres at PRIME Main St. location. Ready to convert to a wonderful Bed & Breakfast Inn. For more information, just call! \$265,000.



**TREES, TREES GALORE!!** On this beautiful corner lot in Mill Creek. Let us show you this lovely 3/2-1/2-2-garage 100% brick home on Arrowhead Drive. You will love the saltillo tile den with atrium area and skylights!! \$144,500.



**PRICE REDUCTION!** Now just \$155,000. Beautiful traditional brick home overlooking Golf Course located at 801 Hilltop Circle. Lots of room with 3BR/3BA. Owner will finance. Call Larry Sands for the details.

Properties By  
**Larry Sands**



**MLS** N. Main St. Salado 947-5580  
 on the grounds of the historic Barton House  
 Larry Sands, 947-5580 • Sarah Lee, 947-5153

## Salado Community Center to hold Texas Western Swing Fiddling Showcase April 12

The Salado Community Center is presenting an exciting musical event that has not been to our area.

The Texas Western Swing Fiddling Showcase will bring six professional fiddlers with band, to the Bell County Expo Center in Belton for an afternoon of entertainment and a dance during the evening April 12.

The afternoon's entertainment will be 3-5 p.m., with an admission of \$5. The evening dance will be 8-midnight, with an admission of \$10. Discount tickets for both events is \$13.

An entertaining musical

program is planned for the afternoon, featuring championship professional fiddler, Randy "Snuffy" Elmore of Cleburne. Randy has played a number of years with Mel Tillis and Reba McEntire. Now, on his own, Randy is in great demand in the fiddling world for recording sessions, concerts, dances and lessons. In addition, we are fortunate to have an outstanding group of professional fiddlers joining Randy in this exciting entertainment extravaganza. At the dance that evening, Randy, along with his friends, will provide western swing fiddle mu-

sic that will keep you on the dance floor all evening long.

Sponsors of the Fiddling Showcase are Trnum Pontiac-Buick, First State Bank of Salado, Belton Walmart, Custom Printing, Stagecoach Inn and Travel Mart-Exxon-Burger King. Proceeds from the Showcase will benefit the Salado Community Center.

For further information or ticket reservations, please call (817) 939-8390 or 933-5353. Tickets are available at First State Bank and Cowboy's Bar-B-Q, as well as the Expo Center.

### Gaby's Mill Creek Catering

**We Provide the Food. You Provide the Fun.**  
 Want to host an event that your guests will be talking about for days? Let Gaby's Mill Creek Catering provide the food!  
 Whether you are serving hearty appetizers, a light lunch, a superb dinner, or decadent desserts, Chef Gaby will prepare food so good your guests won't stop talking about it! To complete your perfectly planned event, we can add the services of a waiter or bartender.  
 Delicious Food • Dependable Service • Affordable Price

Gaby's Mill Creek Catering  
**817/947-5141**

**MILL CREEK:** 1-1/2 story, 3BR/2-1/2BA, large living area with vaulted ceiling clear story & balcony. Ash cabinets & trim, new carpet, vinyl & ceramic tile floors. Utility & pantry, marble bath & dining room sideboard, double fireplace. 2 Living, 2 Dining, 2 Family areas. Large deck, oversized 2 car garage. Fenced yard with complete landscaping, including many live oak and elm trees.

**CONTEMPORARY, CASUAL, COMFORTABLE.** 3 BR, 2-1/2 BA on corner lot. Single living area with vaulted ceilings, bookshelves, fireplace, wet bar, beautiful Terra Cotta tile. Master BR with nook for sewing room, computer or office, 2,500 Sq. Ft. for only \$166,900.

**BEHIND POST OFFICE,** 257' frontage on I-35 access road. Ideal for commercial venture with highway traffic exposure. \$55,000 with owner financing possible.

**2 OF THE 5 PRETTIEST** lots left in Mill Creek. Lots of trees, interesting topography and excellent location. Priced to sell at \$25,000 each.

**COMMERCIAL PROPERTY ON I-35,** 3+ or - acres on I-35 frontage road with easy access available. Plus 2BR/2BA brick home on West Village Road. Owner financing available.

## Mill Creek Realty

**200 Mill Creek Dr. 947-8800**  
**Bradley Phair Dan Nolting Jim Thorn**  
**947-5422 947-0232 947-5394**

### FRIENDLY TIRE

One South Third St.  
 Temple • 773-8488  
 Mon.-Fri. 8-5 • Sat. 8-12



**Front Alignment & Brake Service**

**FREE Mounting**  
**FREE Rotation**  
**FREE Repair of Flats**

on our Passenger & Pickup Tires

**Steel Radials**  
 as low as  
**\$26<sup>95</sup> to \$39<sup>95</sup>**



## Waco symphony sets concert

The Waco symphony orchestra will present its third season concert 8 p.m. March 6 in Waco Hall. The orchestra will be conducted by Music Director Stephen Heyde.

Guest soloist for the concert is pianist Enrique Graf. The orchestra will play Brahms' *Symphony No. 4, Op. 98, in E minor*, *Sokal Fanfare* by Janacek, and *Concerto for Piano and Orchestra, Op. 16, in A minor* by Grieg.

Enrique Graf is presently Artist-In-Residence at the College of Charleston, South Carolina, and Artistic Director of the International Piano Series at the College of Charleston. For two weeks in July,

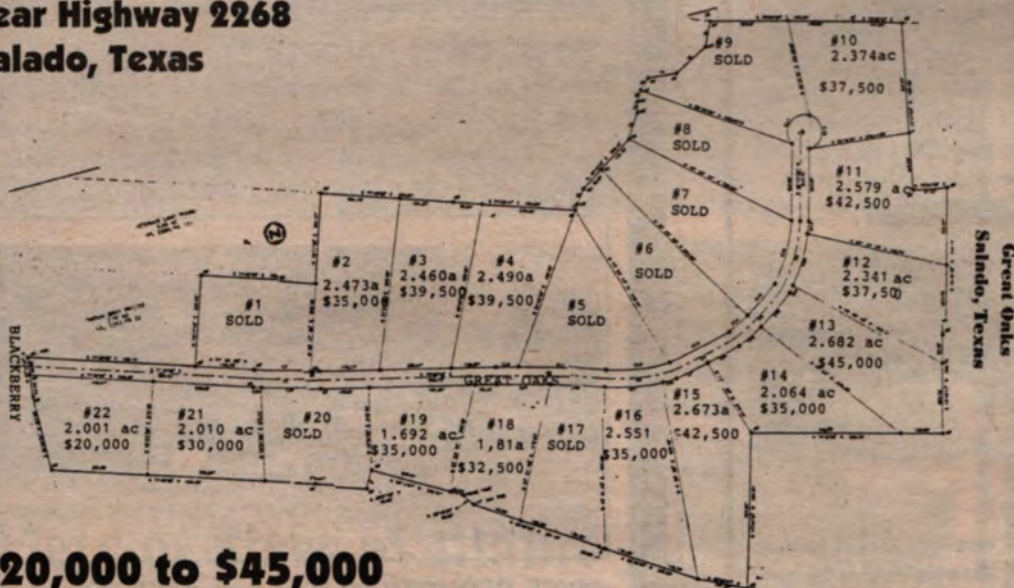
Mr. Graf will be Artist-in-Residence in Balboa, Spain. He has toured extensively in the United States, South America and Europe, and has performed frequently with the Charleston Symphony Orchestra. Mr. Graf has recorded Grieg's *Concerto in A minor*, with the Moscow Philharmonic, and also recorded the *Liszt Sonata in B minor* which is receiving international acclaim.

Tickets for the concert are available at the Waco Symphony office, 600 Austin Avenue in the St. Charles Place, or by calling 754-0851. The concert is sponsored by American Income Life Insurance Company.

### Great Oaks

**A Beautifully Wooded Highly Restricted Subdivision off Blackberry Road near Highway 2268 Salado, Texas**

**Century 21**  
**Bill Bartlett**



**\$20,000 to \$45,000**

These beautiful, heavily wooded lots in Salado offer a peaceful, natural setting! The 58 acre private development is divided into 22 homesites averaging over 2 acres each. Homes may be nestled in large oak, pecan and a variety of other trees. Residents will enjoy the abundant wildlife. Features include these:

- Salado Schools
- Quick Access to I-35
- Country Living
- Highly Restricted Development
- Trees, Trees, Trees

**Century 21 Bill Bartlett**  
**Rita S. Brown, REALTOR**  
**P.O. Box 183, Salado, TX 76571**  
**(817) 947-5050 or 947-5714**  
**(800) 352-1183**

### Changing Jobs or Retiring?

Call A.G. Edwards for alternatives on how you can receive and manage your distribution from your company's retirement plan.

**A.G. Edwards**  
 INVESTMENTS SINCE 1887

3407 S. 31st St., Suite 120  
 Temple, TX 76502-1902



Mike Miller  
 773-1504

Member SIPC  
 1996 A.G. Edwards & Sons, Inc.

7884.02b  
 DTR-130-1097

## Up For Auction

1991 Mitsubishi  
 Red 2-door  
 OK Lic: 1MW067  
 VIN: 4ACS44R2ME005410  
 1985 Oldsmobile  
 2-door gold  
 TX Lic: VNN 64C  
 VIN: 1G3NF27U9FC037581  
 1978 Chevy Pickup  
 Grey Primer  
 TX Lic: LQ4099  
 VIN: CCL448S164963

**Fulford's Garage**

FM 2268 947-5337



# Marketplace

a Guide to real estate in and around Salado

## Homes & Lots:

**For Sale: Woods of Salado...** Beautiful wooded homesites, 2 acres and up on FM 2484. Minutes from downtown Salado. 817-760-9663 Rita

**House for Sale on 1 acre on Main St. Salado.** Cabin on back of property 947-8656. Will consider trade for country property or home. \$200,000 negotiable.

**Belton 410 N. Main St.** Historic cut-stone house. Large rooms, 3,000 sq. ft. 3-4 BR- 3 1/2 BA Heat/Air. H.W. floors, exquisite chandeliers. Ideal residence, Bed & Breakfast or commercial. Realty Unlimited. 817-939-6705 or 817-770-7963

**By Owner:** Heart of Mill Creek under gorgeous live oaks. 3 BR, 3 BA, formal dining room, breakfast and utility rooms, large living room with fireplace, brick storage/golf cart shed, large deck, sprinkler system. \$159,000 947-8330. TFNB

**Country Living 5 or 10 or all 20 acres.** Restricted homesites 1 and 1/2 mile west of Salado on FM 2484. Large Pecan and Oak Trees. Horse corral, well, wild life, utilities, available. 817-718-1495

**10 fenced acres with Texas ranch-style** Austin stone home. 3/2 tastefully redecorated. Trees. Oversized garage. Only \$129,000 Century 21 Bill Bartlett 817-947-5050 or 1-800-352-1183

**3 BR 1 BA farm home on 1.2 ac.** Air & heat, barn, outbuildings. \$62,500. Century 21 Bill Bartlett 817-947-5050 or 1-800-352-1183

**Stately 1884 Victorian on 2.53 acres.** Ready as a bed & breakfast. Additional 3BR, 2 BA house for rental income plus two outbuildings on the land. Room for more cabins on site \$270,021 Century 21 Bill Bartlett 817-947-5050 or 1-800-352-1183

**Mill Creek For Sale,** two 1/3 acre lots on the Golf Course with views of the creek. Call Don or Pat at 947-5144 tfnb

## For Rent :

**Lease - Booth and Display space** available in Salado newest Antique Mall Red Barn Antique Center Royal St. Commons 817-947-1050 tfnb

Studio/Workshop ideal for **ARTISTS, ARTISANS, GALLERY OWNERS, COOP** etc. Beautiful location. Available NOW For information Call Darwin Britt 817-947-5575

**Family Reunions, Class Reunions, Weddings** and other special events. Call Civic Center here in Salado at 817-947-8300 for rental fees. Air Conditioned Auditorium and kitchen facility. Up to 200 people. Also shaded park and Gazebo available. Ideal for Weddings, Showers, and Receptions. tfn

## Wanted:

**Executive** wants to rent a home while relocating to area. Husband and wife in their 50's. No children or pets. Will sign lease. Send information in confidence to P.O. Box 5366, Bryan, TX 77805 or call 409-776-4894

**1 acre tracts** restricted for manufactured homes, close to Salado.

**5 acres, Texas Vet tracts Commercial property on I-35,** 3+ acres, office, warehouse.

**House & Improvements on 10 acres** with nice mobile home & pool. Lot in Live Oak Estates.

**H. Sartor Investments 817-947-5697**

## Main Street Shop Space

1,250 Sq. Ft. gift shop in prime Salado Main Street location.

Now Available

Call 817/947-9560

Hand out your business card to over 4,000 families every week.

An ad this size in the Salado Village Voice costs as low as \$10 per week. For more info, call 947-5321.

**You can run an ad this size every week for just \$5 each week.** Salado Village Voice 947-5321 Deadline is Friday



## Premier office space available for lease in The Veranda

Remaining unleased office space of approximately 1,000 square feet is available in the Veranda on Main St, Salado. This mid-19th century limestone structure served as a hotel in Lampasas before being moved and restored in its new location in Salado. Meticulously restored, building features include longleaf pine floors, antique wood trim and 18" thick exterior walls. A one-of-a-kind location for a professional office or exclusive retail space.

Confidential inquiries  
First Texas Brokerage  
(817) 947-5577



Wonderful family home in quiet country setting. 5 minutes from Salado. 3BR/2BA on 1.6 acres with large oak and pecan trees. Great game room with barnwood walls and beaded ceiling. Detached garage/workshop. \$139,900. Will carry note on adjoining 1.6 acres for home buyer.



New on Santa Maria by GLC. 3BR/2BA all brick with fireplace in den. Stylish oak white-washed cabinets in kitchen. Cultured marble baths. Beautiful home! \$98,000.



You will love the roomy Double Faced Fireplace in this gorgeous 4BR Arrowhead Drive Home! Liveable floorplan, amenities you seldom find for just one property and Supreme New Interior Finishes, marble, hardwood flooring, glazed tile flooring, granite counter tops, just to name a few! Call today for your opportunity to view! ~~\$204,900~~. Reduced to \$189,500.

Call Sarah Lee, Realtor  
947-5580  
947-5153 • 760-3181

Properties By Larry Sands  
Selling Historic Salado  
N. Main St. Salado



**Lilly Homes**  
Custom Home Builders

(817) 770-0020 • (800) 442-3599

# Rain delays area corn planting

by James M. Davis  
Co. Ext. Agent

Rain has delayed corn planting all across Central Texas. Many farmers would be in the full swing of planting by now if rain had not delayed them. However, most people are not complaining about the wet weather because everyone remembers (who could forget) the drought we were in this time last year. I hope the weather will clear and let everyone get their crops planted.

Soil temperatures are real important at planting time to get crops up and going. Visiting with Dr. Cloyce Coffman, Extension Agronomist, he says that farmers need to check their soil temperatures at the 2-inch depth (planting depth) early in the morning. When the early morning 2-inch temperatures reach 50 degrees plant corn, at 55 degrees plant soy beans, at 60 degrees plant sorghum and

above 70 degrees plant cotton. to 30 bushels per acre.

Remember, most of the soil temperatures published are taken at a 4-inch depth. The 4-inch reading is a more stable reading but is slower to warm up. The 2-inch reading gives you a better idea of the environment in which the seed is germinating. It is critical that the 2-inch reading be taken around 7-8 a.m. when the soil temperature is lowest. Midday readings will be much higher than early morning readings. If you use 4-inch depth readings, take them at midday and up the minimum temperature requirements 5 degrees for all crops (corn - 55 degrees, soybeans - 60 degrees, sorghum - 65 degrees and 75 degrees for cotton).

Not only is soil temperature important, but planting dates are also important in Central Texas. A study done at the Stiles Farm in Williamson County during the 1980's compared mid-February, late-February, early March, mid-March, late-March, early-April and mid-April planting dates for corn. The four study showed the average optimum planting date to be March 2 with the optimum range being Feb. 24 to March 7. For every week planting was delayed after the optimum date, yields decreased by as much as five to seven bushels per acre per week.

This means planting corn in late March can decrease yield expectation by as much as 25

\*\*\*\*\*

The older I get the more gentle I like my cattle to be. Now research backs me up. Colorado State researchers have studied relationships between temperament, feedlot performance, and carcass quality. Over 500 cattle were evaluated of various combinations of British, Bos indicus, and Continental breeding. Cattle were scored for temperament during routine processing and weighing, ranging from Score 1, "calm with no movement." to Score 5 "berserk, rearing, twisting, violent, struggling." Increased levels of behavior problems led to gains as much as 1 lb./day less, tougher meat, and more dark-cutters. Heifers averaged one full temperament score higher (more nervous), were tougher, and more likely to cut dark. British-type cattle tended to be calmest; Continentals were intermediate and Brahman-type were most nervous. It should be noted that all these cattle had been raised under extension management with little human contact and that only with people on horseback.

\*\*\*\*\*

The Temple Farm and Ranch Club will meet Feb. 28 at the Ramada Inn in Temple. Speaker will be meteorologist Bruce Thomas.

**Cowboy's Barbecue Restaurant, LLC**  
 Owned & operated by Raymond & Cindy McKee  
 Open 10:30 a.m. - 'til 7 p.m.  
 Sandwiches • Dinners • By the Pound  
 Carry Out Orders We Cater 947-5700  
 IH-35, Exit 285 Salado, Texas  
 Everyday Special: Family Pack \$10<sup>95</sup>

**STILLWELL**  
 DISTINCTIVE HOMES  
 Since 1978

Plan, Design, Financing  
 & Decorator Services

Preview our Homes and Lots  
 in these fine  
 Salado Subdivisions:  
 Mill Creek  
 The Bluff at Mill Creek from the 160s  
 Carriage House Estates from the 160s  
 Old Mill Springs from the 90s  
 Woods of Salado

Call Wayne Stillwell for your private showing  
 817-771-2985 or 817-947-0838  
 P.O. Box 1032 Salado, TX 76571

Custom Homes, Townhomes & Commercial

MAJOR APPLIANCES  
 LAWN & GARDEN  
 TVs • STEREOs  
 TOOLS

**SEARS**

Retail Dealer  
 3103 S.W. H.K.  
 Dodgen Loop  
 TEMPLE  
 817-770-1221



Building Fine Custom Homes in Salado  
 and the Surrounding Areas

- ◆ New Homes
- ◆ Remodeling
- ◆ Design Service
- ◆ Interior Decorator Service
- ◆ Finance Arranging

**VBC**  
**VOLNEY BUILDING COMPANY**  
 RESIDENTIAL BUILDERS

2010 Southwest H.K. Dodgen Loop • Temple, Texas 76504  
 (817) 778-0329

Planning to move this year?  
 Buying or Selling --  
 in the Salado, Belton or Temple areas.  
 Think of me!!!  
 I'm here to help you!!



Myra Novosad  
 939-2399  
 947-1619

**Century 21**  
 Bill Bartlett

600 N. Main St. Salado  
 817/947-5050  
 1-800-352-1183

Each office is independently owned and operated

**GSR** **GREAT SOUTHWEST RESTAURANT**  
 1012 East 2nd Belton, Texas  
 817-939-9113

Check Out Our Daily Specials

**This Weekend's Specials**  
**FRIDAY**  
 All You Can Eat Catfish & Shrimp \$7<sup>50</sup>  
 Ribeye (8 oz. \$7<sup>95</sup>)  
 Steak for 2 \$10<sup>95</sup>

**SATURDAY**  
 Steak & Quail \$6<sup>95</sup>  
 Ribeye (8 oz. \$7<sup>95</sup>)  
 Seafood Platter \$8<sup>50</sup>

**SUNDAY**  
 Roast Beef & Hawaiian Chicken  
 with all the trimmings & Dessert  
 \$6<sup>50</sup> Seniors \$4<sup>50</sup>



## Shrinking donor pool at Lions Eye Bank causes delays in sight-restoring operations

A shrinking donor pool is delaying some sight-restoring operations, according to the Lions Eye Bank of Texas at Baylor College of Medicine.

"Increased governmental regulation and testing have reduced the supply of donor tissue," said Mary Beth Danneffel, executive director of the Lions Eye Bank of Texas at Baylor College of Medicine in Houston. "Cornea donations are needed now more than ever."

The cornea is the clear outer surface of the eye and is similar to the crystal of a watch. If the crystal becomes scratched or fuzzy, the face of the watch becomes difficult to see. Replace the crystal, and the face of the watch is seen clearly, much like sight-restoring

transplantation surgery.

"The goal of corneal transplantation is to improve vision," said Dr. Dan Jones, chairman of the Department of Ophthalmology at Baylor and acting medical director of the Lions Eye Bank of Texas. "Donations of eye tissue allow for vision-saving operations to be performed."

More donors are always needed, said Danneffel.

"Donor designation is easy," she said. "Get the facts, indicate your decision on a driver's license and/or donor card, and share the decision with your family."

Informing loved ones about the process is a very important step, because it makes it less emotionally difficult to deal with during the unexpected

and tragic circumstances of sudden death.

The Lions Eye Bank of Texas retrieved more than 3,000 donor eyes and corneas in 1996, with more than half of those used for transplantation. Many of the remainder were used in research. The Eye Bank serves the Texas Gulf Coast and distributes eye tissue primarily to surgeons of patients residing in Texas.

During "National Eye Donor Awareness Month" in March, tours of the Lions Eye Bank of Texas will be offered. Speakers are also available to address school and civic groups.

For more information or to schedule a tour, call the Lions Eye Bank of Texas at (713) 798-5500.

## UMHB will play football in 1998

Intercollegiate football at the University of Mary Hardin-Baylor is slated to officially begin Sept. 1998.

According to university president, Dr. Jerry G. Bawcom, "This is a significant undertaking for UMHB and we have several committees developing a game plan to effectively 'kick-off' this new excit-

ing new venture."

Between now and the first home game, slated for Sept. 19, the university plans to raise \$850,000 to start the project. They will also build a field house, hire a football coach, recruit players and offer season tickets.

"Texans love football, and we have already been ap-

proached by many area business leaders indicating their enthusiasm at the prospect of starting intercollegiate football in Bell County," said athletic director Ben Shipp.

The football team will be NCAA Division III competing in the American Southwestern Conference.

*Deanna's Floral Creations*  
**100 Mill Creek Dr., #160**  
 (Next to IGA Village Foods)  
**Salado, TX 76571**  
**817-947-0222 • 1-800-947-0502**  
 Credit Cards Accepted • Telefloral Wire Service  
 Delivery to Salado, Bartlett, Jarrell, Belton and Temple

*Chas Schreiner IV*  
**Country Properties**  
 Local, Hill Country, South Texas  
**SALADO 947-4409 24 hrs.**

**CENTRAL TEXAS**  
 Kitchen Center

Come see Central Texas' largest KraftMaid Cabinet Showroom with over 2,000 sq. ft. of Kitchen & Bath displays!

Your Dream Kitchen is on display or can be brought to life by computer design

**All Price Ranges of Cabinet & Counter Tops**

• Wilsonart Products • Amerock Hardware • Kohler Fixtures  
 1201 South 57th St. • 742-1425 • Amy & Robert Ray, Owners



New listing: Lovely 1 year old home, many extras. A true powder puff in Mill Creek. \$139,500.

Neat house on quiet Belton Street. On large lot with mature trees. A good place to settle in and start your family. Plus VA assumable loan. \$43,900.

3BR/1BA farm home on 1.3 acres, air & heat, barn, outbuildings. \$62,500.

A new home! On W. Amity near Smith Dairy. 3/2/2 efficiently designed brick home on .526 acres. Only \$81,500.

New Listing: Quality new 3BR/2BA home in quiet neighborhood. Many large trees. \$84,000.

Close to town. Two year old home with 3BR/2BA/ Vaulted ceiling in LR. \$91,000. On FM 2484, 22+ acres, 2 barns, corral, fenced, with 3BR/2BA mobile home. Great for horses. \$99,500.

3BR, 2BA ranch style home on 1.9 acres. Sit out on spacious front porch and feed and watch the deer! Native trees, rural and quiet. \$108,900.

Splendid view of valley. 25 acres fenced with well. 3BR/2BA home. \$119,021.

New Listing: Hilltop view of a pond in Mill Creek. Drink coffee in the morning from your deck! 3BR/2BA, fireplace, tile & more. All for \$129,021.

New listing: 4/2/2 in Mill Creek with interesting architectural accents... Only 1 year old! \$129,800.

New listing! New home on over 1/2 acre. Wild Rose Subdivision. Easy access to I-35. Act now and pick out colors. Over 1,800 SF. \$138,521.

A new home! Tree shaded backyard. Enjoyable deck extends from Master bedroom to living room. \$149,800.

An extra large kitchen in this native stone home nestled among large live oak trees in Woods of Salado. 4/3/2 on 2.65 acres. Spacious rooms! \$159,500.

Wooded 2+ acre lot with excellent floorplan. 3BR/2BA, \$159,521. Great Oaks.

Wooded 2 acre lot. 4BR/2-1/2BA. Great Oaks. \$169,521.

New listing: New 4BR/2BA stone home on beautiful wooded lot. \$183,900.

Royal Oaks Jewel: 4BR/3BA, new home. 2,781 SF, large lot. \$215,000-\$195,000.

Formerly Salado Confectionery. Victorian style built in 1994. Living quarters on 2nd floor. Very attractive, desirable location. Also 640 SF office. \$218,000.

This 1884 Victorian on 2.53 acres has an additional 3BR/2BA house for rental income, plus two outbuildings. Great opportunity for Bed & Breakfast. \$270,021.

Commercial property on Main St. in Salado. Recently renovated building with approx. 1400 SF. Building dates back to early 1900s. Well for watering. \$289,500.

Custom home in Mill Creek. Formal Dining & Living. Two fireplaces. \$349,000.

Over 9,000 SF commercial property. Very good income potential. Reputation for Fine Antiques. Loyal repeat customers. Operating data available. Quality tenants. \$398,000.

**Century 21**  
**Bill Bartlett**

600 N. Main St. Salado, TX 76571  
 (817) 947-5050 1-800-352-1183



10 fenced acres with Texas ranch style Austin stone home. 3BR/2BA tastefully redecorated. Trees. Only \$124,500.



208 acre ranch with 3BR/2BA brick home, guest farm house, barns, sheds, fenced, live creek, landing strip. Reduced to \$299,521.



4 Duplexes on Royal St. in Salado. Excellent cash flow, good financing, well-maintained. One or all.



Freshly painted inside & out: 3BR/2BA split bedrooms. Nice family neighborhood. \$92,000. Additional lot available for \$7,000.



Great view of golf course & woods! Austin stone contemporary. Large deck. Parquet floors. Office. Lots of windows! \$169,821.



Reduced to \$115,900!! At the entrance of Mill Creek. Four BR, study, formal living & dining. Large lot. Shaded & fenced backyard.

### Acreage & Homesites

93 acres between Holland & Belton, hill-top. \$1,175/acre.

85 acres, all coastal grass, well fenced, S. Salado, owner financed. \$1,595/acre.

75 acres on FM 2115 with great view. 2 tanks.

60 acres between Belton & Salado.

45.4 acres with I-35 frontage at Prairie Dell. Excellent tract, strategically located. \$3,750 per acre.

43.458 acres Loop 121. \$3,950/acre.

20.9 acres on I-35, south of Salado.

20 acres, woods, FM 2484.

10 acres west of Salado, \$3,500/acre

6.10 & 21 acres of rolling hills, FM 2115, owner financing \$3,500/acre.

5.55 acre heavily wooded home siteoff FM 2484, \$47,500.

5 acres, Blackberry & Royal. \$26,000.

5 acres, Armstrong, long creek frontage. large trees, good road frontage.

1.3 acres behind 12th Fairway, Mill Creek. Heavily wooded, \$39,000.

Residential lot in Mill Creek. Nice trees line the lot. \$13,521

Golf course lots in Mill Creek.

Lot in Woods of Salado. \$15,000.

Unique lot in Salado Hills has its all, trees, terrains, location! \$15,000

Rita Brown 947-5714

Mary Kite 947-5117

Melanie Kirchmeier 947-9077

Denver Mills 947-9205

Myra Novosad 947-1619

# First Texas Brokerage Co.



Located in The Veranda on Main St. Salado  
817-947-5577

## RESIDENTIAL LISTINGS



**\$139,900:** Beautiful Live Oak trees surround this 3/2/2 on quiet street in Salado Oaks. Formal dining and breakfast room. Don Rogers, Inc. builder.

**\$325,000:** Mill Creek's signature green hosts this custom 4-3-2 on three lots. Many extras include built-in entertainment centers, hardwood floors, spacious kitchen, covered patio, and tri-level deck. Beautiful landscaping.

**\$182,500:** Formal living and dining room. **UNDER CONTRACT** office. Tall ceilings, pretty wall paper and great master suite.

**\$145,000:** Owner will sell below appraised price. In our opinion, the best value in Mill Creek. 4-3-2 on quiet cul-de-sac. Large fenced backyard with creek frontage.

**\$139,900:** Beautiful Live Oak trees surround this 3/2/2 on quiet street in Salado Oaks. Formal dining and breakfast room. Don Rogers, Inc. builder.

**\$92,500:** Salado Springs, 3/2/2 on large lot. Trees, fenced yard.



**\$229,000:** Decorator perfect! This new 4-3-2 has beautiful wallpaper and paint. Tall ceilings add to the open concept. Formal living and dining. Choice lot in The Bluffs at Salado Creek. Beautiful view off large deck. Quality built by Don Rogers, Inc.

**\$52,000:** Small two bedroom frame on one acre. Currently rental property.

**\$40,000:** College Hill. Two bedrooms, **UNDER CONTRACT** and detached garage, fenced yard. Owner finance.

## ACREAGE

**Shanklin Road:** Looking for country? Try this 86 acres with stock pond, wind mill, canyons, creek and many trees. \$2,400/acre.

**Lake Stillhouse:** Tremendous view from this wooded 29 acres. \$155,000.

**Amity West Estates:** 10 acres, \$37,500, many trees, owner finance.

**Amity West Estates:** 10 acres at \$: **UNDER CONTRACT**

**Summers Mill area:** Approx. 522 acres on FM 1123 and Campbell Hill Road. Beautiful trees, creek. Owner will subdivide into small or large tracts.

**Hwy 317 & Poison Oak Rd.:** 26 acres of heavy woods. \$129,900

**Woods of Salado:** Many trees with lake view. \$39,900.

**Atkins Road:** 5 miles east of Salado. 52 acre **SOLD** \$10/acre, owner finance.

**Atkins Road:** 5 miles east of Salado. 49 acres at \$1,400/acre. Owner finance

**FM 2268:** 6.75 unrestricted acre **UNDER CONTRACT**

**Belton:** 20 acres fronting Nolan Creek. Large live oak trees with old home. \$139,000.

**FM 2115:** 19 acres, long road frontage, seasonal creek, excellent building site. \$2,200/acre.

**FM 2843:** 100 acres with trees and deer. Excellent homesites. \$2,000 per acre.

**FM 2843:** 120 acres with many trees. **UNDER CONTRACT**

**West Amity:** Six 1/2 acre lots ready for building. Paved road, water available. \$6,500 each.

**FM 2268:** Mobile Home allowed on this 4 acres just off FM 2268. Owner finance. \$17,500.

**River Place Road:** 1.98 acres with River frontage. Beautiful trees, natural spring. \$25,000

**FM 2115:** 178 fenced acres with long road frontage. Property has small house, two barns, two stock tanks, good grass. Great view. Owner finance. \$275,000.

**Woods of Salado:** Pick one - two tree covered lots, each \$25,000.

**Mill Creek:** One of the few lots left in Mill Creek. Many trees. \$30,000.

## Horizon Homes

**\$275,000:** Tremendous master suite opens onto deck for viewing sunset. Located in Salado's newest subdivision, this 4-2-1/2-2 has many amenities. Fireplace, split bedroom, cherry wood cabinets, formal and informal living and dining.



**\$144,900:** New construction in Salado Oaks. 3-2-2 on large tree-covered lot.

**\$104,900:** Appraisal, survey and Title Commitment complete. Fast move-in on this 3/2/2 brick. Just off FM 1123 on one acre. Country living with easy access to IH-35. Belton schools.

**\$96,900:** Salado Springs. This 3/2/2 brick **SOLD** complete and ready to move into. Large lot with pretty view. Features include vaulted ceilings, waded board, crown molding & ceiling fans.

**\$550/month P&I monthly payment** for this super nice 3/2/2 brick on large lot. Pretty trees out back.

## Salado Oaks

1/2 Acre & larger restricted wooded lots  
\$19,250 to \$21,500



1/2 mile east of Interstate 35 on FM 2268  
10% Down • 10% Interest

## COMMERCIAL PROPERTY

7.6 acres Commercial Property east of McDonald's on F.M. 93 in Belton. \$99,900.

3 acres fronting I-35, one mile south of Salado, excellent building site. \$36,000.

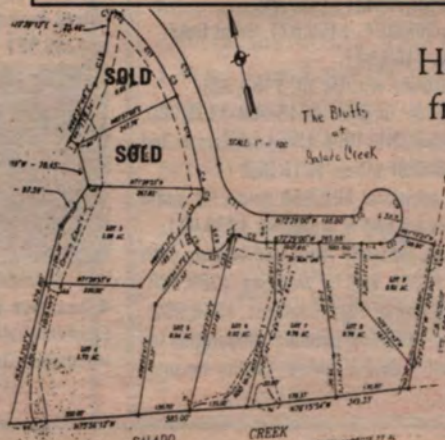
Main St. in Belton. 6 lot that includes 3 houses, \$210,000.



**Business for Sale:** Premier location on Main St. The Gazebo, business only, not building. Call for details.

Call us about listing your property. Experienced agent wanted. Call Glenn at 947-5577

## The Bluffs at Salado Creek



Highly restricted Homesites from .62 acre to 1.73 acre. Thomas Arnold Road

Creekview Lots Available

Owner Finance

# Shopping Map of Salado Pages 6-7B

**SALADO**

# Visitor's Guide

SALADO Village Voice, Page 1B

## Tinker, Tailor, Cowboy, Sailor

On March 1, Tablerock will host a tribute to Dr. Clyde "Nip" Goodnight. Desserts and coffee will be served at 7:30 p.m.

A play, "Tinker, Tailor, Cowboy, Sailor," written by Tom Taylor and Jackie Mills to honor Dr. Goodnight, will be performed at 8 p.m. Richard Paul Thomas will star in the play.

Dr. Goodnight was born on March 3, 1924, near Holland, Texas. An accomplished athlete, he played professional football for the Green Bay Packers and the Washington Redskins from 1945 until 1951. He played football six months and attended medical school at the University of Tennessee for six months each year.

To earn money to finish medical school, he coached and taught science at Holland High School for three years. He returned to medical school in Tennessee and graduated in 1956. His internship was spent at King's Daughters in Temple. In 1957 he opened his practice in Holland.

Dr. Goodnight married the former Virginia "Jenny" Fulcher from Maples, Texas, in 1959. They made their home and raised their daughter, Sheryl, in Holland and in Little River. Nip retired from the medical profession in 1985.

His hobby of real estate soon developed into a career. In Nip's "retirement" years, he became a builder, contractor and land developer.

Those attending the March 1 program who are acquainted with Dr. Goodnight are asked to bring pictures, or news clippings about Nip, to place in a scrapbook. Be prepared to share a sad, happy, embarrassing or funny "Nip" story. Birthday cards for Nip's March 3 birthday are appropriate. Dress casual. Reservations are requested: call Jackie Mills



*Dr. Clyde "Nip" Goodnight*

at 947-9205. Admission is \$7.50 for Tablerock members and \$10 for non-members and may be paid at the door.

Richard Paul Thomas will appear in a play March 1 to honor Dr. Clyde Goodnight. The play, a tribute to Dr. Goodnight, was written by Tom Taylor and Jackie Mills.

Thomas is a composer, singer, musician and performer and has acted in The Boys Next Door with the Temple Civic Theater and Lou Gehrig with Tablerock. Richard has been music director for Salado Legends for four years. Songs composed by Richard and featured in the outdoor musical drama Salado Legends are "Salado", "Sirena" and "I Love Him". He has performed in concert with Anne Murray, Loggins and Messina, Helen Reddy, Michael Martin Murphy and many others. As interim Director of the Cousteau Society, he produced concerts by John Denver, Pete



*Richard Paul Thomas*

Seeger, James Taylor and Don McLean.

Richard is the President-of TBC International in Salado.

He serves on the Board of Trustees for the Salado United Methodist Church and is a consultant to Tablerock Festival of Salado where he served as President for five years.

For reservations to the March 1 performance of Tinker, Tailor, Cowboy, Sailor call 947-9205. Dessert and coffee will be served at 7:30 p.m. The play starts at 8 p.m. Tablerock Members \$7.50 Nonmembers \$10. Pay at the door on the night of the performance. Seating is limited, reservations are required.

### Hutchens House

Antiques,  
Old Stained Glass  
N. Main St.  
Salado 947-8177  
Open weekends



**The Royal Salamander**

Have the most spectacular yard in town! Place Your Spring Topiary, Trellis and Garden Arbor orders now.  
It's the best time of year for custom orders.

221 N. Main  
Open Daily 947-1772



**Olde Fowler House Antiques**

1301 North Main St.  
(exit 285)  
(817) 947-0710  
Antiques, Decorations,  
Gifts, Teddy Bears, Dolls



**Fishing Well**  
Antiques and Things  
Art Glass, China & Crystal, Porcelain Dolls  
300 Baines St., Salado, TX 76571  
(817) 947-1997 Jerry Iley



**One Royal** 947-5555

**Salado Galleries**

*Just Beautiful Things*

Main Street 817/947-5110

*Casual to Elegant Ladies Apparel*

**Village Boutique**  
Creations & Collections

Better Women's Apparel  
Fine Costume & Sterling Jewelry

N. Main St. Salado  
817/947-9100

**40-80% off**

**30%-50% Off All Jewelry**



Bunkhouse (located behind Main House)

## Country Place Bed & Breakfast

Exit 283, from I-35 • East on FM 2268 for 2.5 miles

Reservations 817/947-9683

Bob & Elinor Tope, Owners/Innkeepers

RURAL CENTRAL TEXAS AT ITS BEST



An unusual  
collection of  
ladies' fashions  
and accessories

Main St. at N. Pace Park Dr. Salado 817-947-0561



The Legend of Catfish & Little Bream  
Children's book available for purchase for \$17.95

## Wells Gallery

• Limited Edition Prints • Bronze Sculptures • Original Paintings  
Next door to Stagecoach Inn dining room  
817/947-0311

Antiques

Antiques



One Royal • Salado • 817/947-5718

Authentic merchandise from American Estates

Early Texas and Country Primitives  
Caspari Notes & Napkins,  
Blenko Water Pitchers

FURNITURE: Walnut, Mahogany, Cherry, Pine  
CHINA: Lenox, Haviland, Flo-Blu, Old English, Oriental  
GLASS: American, Irish, English, German

Art Interiors Gifts



**GENEROUS GRANT** from Compass Bank, Central Texas to the Salado Civic Center Foundation is shown being handed over to Lloyd Parks (above left), Finance Vice Chairman of the Foundation and Chairman of this year's auction, by Andy Vaughan, Vice President/Branch Manager, Compass Bank-Salado. The grant of \$1000.00 is the first in a series of annual donations by Compass Bank to the Foundation and this year is given on the occasion of the Fourth Annual Civic Center Auction that is raising funds to pay for the expanded parking lot paving project at the complex. Compass Bank, Central Texas Regional President Wendell C. Williams announced the grant in a letter to Foundation Chairman Ken Clapp on Feb. 6.

## More than 4.5 million Texans lack health insurance; 1 in 3 are children

by John Sharp  
Texas State Comptroller

More than 4.5 million Texans lack health insurance. One in every three of them are children, most from low-income families. Far too often, these kids go without the treatment they need until their health problems develop into more serious illnesses that pose a threat to their futures and to Texas taxpayers.

Uninsured children are five times more likely to wind up in an emergency room, where the cost of their care is considerably higher than in a doctor's office. They are four times more likely to require a hospital stay because of delayed treatment. And they are far less likely than insured children to be immunized, falling prey to expensive childhood illnesses.

All this despite the fact that every dollar spent on immunizations and early treatment has been found to save up to \$14 in future medical costs. Affordable medical insurance coverage could improve the health of our children while saving taxpayer dollars.

Texas House Speaker Pete Laney has made this issue a priority. He wants to provide more children with health insurance without costing the state more money.

Now, State Representative Hugo Berlanga of Corpus Christi has filed legislation to close the gap. House Bill 3, based in part on my *Disturbing the Peace* proposals, would

set up a public-private foundation to provide affordable health insurance for children whose parents earn too much to qualify for Medicaid, the government health insurance program for the poor, but too little to buy insurance on their own. If approved by state lawmakers, this nonprofit corporation would offer school-aged children and their siblings access to quality health insurance.

By enrolling the children of low-income working families in a pool, with each paying according to their income, this public-private partnership could make it possible to provide affordable health insurance policies for the children of Texas. Low-cost health insurance plans offering preventive care, emergency room services, and outpatient surgery are already available. A special health insurance purchasing alliance could improve parents' access to coverage for their children.

I would also recommend taking this legislation a step further. The state's child support enforcement program could be a vehicle for helping Texans make sure more kids receive the medical care they need and for reducing the costs to Texas taxpayers of providing Medicaid coverage.

Parents paying court-ordered child support are required to provide their children with health insurance, too. Yet, the parents of more than 100,000 of these children lack health insurance themselves. Even if their employers offer it, they can't afford to take

advantage of the offer. My plan provides an affordable children's health insurance policy for uninsured children at no cost to taxpayers. It also gives the state a unique opportunity to recover a significant amount of the Medicaid costs for children now under child support orders.

The creation of a Stabilization Revolving Fund could help by providing health insurance premium payments for children whose non-custodial parents are obligated to pay child support but are unable to do so. That way, children wouldn't suffer when their parents find themselves temporarily out of work.

In addition, state law should reinforce the Attorney General's mandate to collect medical support payments from parents whose kids lack private health insurance. This would save money by requiring parents to support their children's health needs, rather than letting Texas taxpayers pick up the tab through Medicaid and other programs.

(This is adapted from State Comptroller John Sharp's *Disturbing the Peace: The Challenge of Change in Texas Government*, his fourth comprehensive performance review of state government, available by calling 1-800-232-8927 toll-free or writing: Texas Performance Review, PO Box 13528, Austin, Texas 78711. There is a \$10 charge for the two-volume report, which is also available free of charge on the Internet at <http://www.window.state.tx.us>

## Salado Democrats to meet March 3

When Salado Democrats meet in March, it will not be to discuss what is going on in Austin or Washington, although those subjects may come up. Instead they will be engaged in two time-honored traditions: eating pie and playing dominoes

Anyone willing to bring a pie should call Billye Fuller at 947-8318 or Theron Palmer at 947-9560. Both traditional dominoes and Forty-Two games are possibilities. Anyone wishing to play still another game should get their table together in advance.

The meeting will be held at the Hodge party house 6:30 p.m. March 3. "All area Democrats are invited to participate. Newcomers to the area, especially those from out-of-state, may as well learn to play Forty-Two," according to Violet Palmer. "It's like learning to ski in Colorado or to swim in Hawaii."

## Bell Museum sets April garage sale at Expo Center

The Bell County Museum will hold its Bell County Garage Sale 9-5 p.m. April 12, at the Bell County Expo Center.

The museum is now accepting vendor applications for this event. Vendors will be selling collectibles, antiques and garage sale stuff.

To obtain more information regarding this major fund raising event call 817-933-5243.

## Salado shop to cut ribbon

The Salado Chamber of Commerce Ambassadors Committee invites you to a ribbon cutting slated for Feb. 27.

The ribbon cutting will be held at 9 a.m. at Streets of

Salado, in the Salado Plaza Shopping Center.

A ribbon cutting planned for Feb. 27 for Brambley Hedge has been postponed until a further date.

B a r n h i l l   ★   B r i t t

Furniture constructed entirely of antique lumber salvaged from 19th century Texas structures

Salado Square Main Street  
817.947.3277

*Main Street Place*

A collection of unusual furniture, lighting & accessories for the home

#8 Salado Square                      Nancy Light  
Salado, Texas                              947-9908

*Browning's Courtyard Cafe*

Featuring Daily Lunch Specials

- Soups • Salads
- Classic Sandwiches
- on Fresh baked Bread
- Homemade Desserts • Cookies

Catering to Your Specifications  
Carry Out 947-8666

#4 Salado Square  
Main St. Salado


*Linda Rountree Pritchard, R.N.*  
Registered Massage Therapist

**Therapeutic Massage**  
**Stress Management**

February Special: \$10 off regular price with this ad. Good through Feb. 28

Salado Square  
**(817) 947-HAND (4263)**

*Beautiful styles and wonderful accessories just for you!*



*Delight in*  
... Classic looks for your everyday lifestyle  
... The unique with a "Texas flair"  
... BRIGHTON belts, handbags, wallets, bracelets, key fobs, clocks, picture frames, address books, checkbook covers and more.

**Clio**

#3 Salado Square  
Main Street Salado, TX  
M-Sat. 10-5, Sun 1-5  
817/947-0322  
Visa/MC/AM EX/Discover

*Come in and browse!!*

*Our Annual Fall & Winter Sale Now In Progress (Up to 60% Off Reg. Retail) New Spring Fashions Arriving Daily*

*Another Day*

- Caswell-Massey fragrances
- Framed prints and calligraphy
- Silk Florals
- Hand-painted picture frames, birdhouses & clocks

#5 Salado Square  
Main St. Salado  
*(next to Browning's Cafe)*  
Open Daily  
817/947-0300



# Magnolias

on • the • square

We ship UPS

*Magnolias on the square*

Deborah Aldridge  
owner

1 Salado Square - Main Street  
P.O. Box 1054 - Salado, Texas 76571  
phone (817) 947-0323 - fax (817) 947-0324

Gift Bags	Invitations	Paper Plates
Napkins	Greeting Cards	Boxed Notes
Wrapping paper	Wedding Invitations	Other Specialty Paper Products

*Penelope's*

Fine Paper and Gift Stores  
Magnolia's on the Square • #1 Salado Square  
Main Street, Salado • (817) 947-0323

Just For Him

*Distinctive Gifts for Men*

Remember Him

Father's Day • Anniversaries  
Birthdays • Graduation

Located in  
Magnolia's on the Square  
947-0323



Papagayo

**An Ethnic Store**

Jewelry - Folkart - Clothing

A shop full of Wonderful, Ethnic Treasures to Wear  
Flax, Marketplace, Veranda Wear and more.

<p>At Sironia 1509 Austin Ave. Waco, Tx 76701 817-754-8009</p>	<p>At Magnolia's #1 Salado Sq. - Main St. Salado, Tx 76571 817-947-0323</p>
--	---

THERE'S NO EXCUSE  
FOR DOMESTIC VIOLENCE.

For information on how you can help stop domestic violence, call us.

1-800-END ABUSE

# Livestock, Meat judging sessions set for first week of March

by Tammera S. Beckham & Chris T. Boleman  
Co. Ext. Agents

If you are interested in participating in a Livestock or Meats judging team, plan to attend one of the two sessions scheduled for the first week in March. Chris will be meeting with SRS-ages 14-19 as of Jan. 1, 1997 on at 5:30 p.m. March 3 at the CEO. He will meet with any interested JRS-ages 3rd grade-13 at 5:30 p.m. March 4 at the CEO. If you have questions, please contact Chris.

There will be an instruc-

tional Horse Judging Contest on March 22 at the Angelo Indoor Arena in San Angelo, Texas. Anyone interested in

learning about 4-H horse judging is encouraged to attend. Please leave a message at the CEO by March 15 with Mary Ann if you are interested in attending. This will allow Chris to send in all necessary forms for Bell County to participate.

March 12 is the entry deadline for exhibitors who would like to participate in the Capitol of Texas Beef Heifer Expo. The heifers will start showing at 8 a.m. March 22. Arrival for heifers will be the day before on March 21. Contact Chris if you are interested in this particular show.

Reminder, all high school graduating seniors are encouraged to fill out to participate in the Texas 4-H Foundation Scholarship program. This

program is open to ALL 4-H members who have been involved in 4-H for at least 3 years-including this current year; have made a minimum of 900 on the SAT and/or 20 on the ACT; and will be attending a Texas college or univer-

sity. These are due to the CEO on March 5. Copies were mailed to all 4-H members who were enrolled in the Bell County 4-H program as of Dec 1996. If for any reason, you did not receive one, please contact the CEO in Belton as soon as possible to secure an application. Contact Tammera for additional assistance.

Educational programs conducted by the Texas Agricultural Extension Service serve people of all ages regardless of socioeconomic level, race, color, sex, religion, national origin or disability.

**NOW OPEN**

glass coins stained glass rare coins 947-4423	glass floral & gifts 947-5529
---	--

1209 N. Stagecoach Road

**Mountain Mary's Tonkawa Museum & Trading Post**



Mondays-Saturdays 10-5  
Rugs • Blankets  
• Arrowheads • Pottery  
• Indian Toys • Stone Critters


I-35, exit 285 Salado

Salado Antique Mall  
Open Mon-Sat. 10 a.m.-5 p.m.  
Sunday 1-5 p.m.  
550 N. Main St., Salado  
(Across from the Halley House)  
817-947-1010

The  
Dusty Rose  
"Home of Santas  
Unlimited"  
Large selection of hand-painted  
Santas by Karen Lee  
Open Daily  
110 Royal St. 947-9215

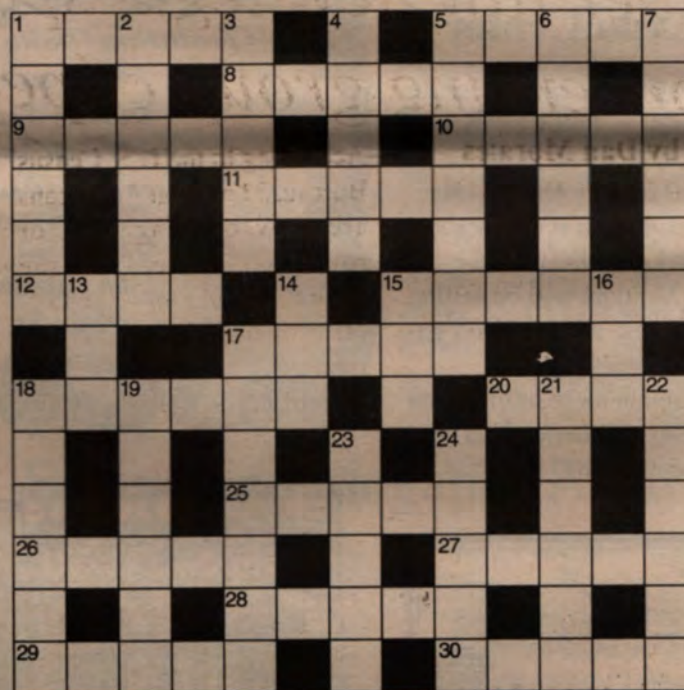


Just quiet class  
**The Rose Mansion**  
Bed & Breakfast  
One Rose Way, Salado  
817-947-8200 or 800-948-1004



**Peddler's Alley**  
5,000 sq. ft. of antiques,  
collectables & gift items  
in a unique setting  
Located off Royal St.  
behind Central Texas  
Area Museum  
817/947-9722  
Tues.-Sat. 10am-5pm  
Sunday 1-5pm

## CROSSWORD



### CLUES ACROSS

- Custom
- Drift
- Out of the way
- Dreadful
- Remains
- Buoyant
- Level
- Apprehend
- Scorch
- Immune
- Detail
- Recorded
- Sea
- Emblem of peace
- Surpass
- Restrain
- Saturated

### CLUES DOWN

- Funeral car
- Confuse
- Match
- Gambling pastime
- Renovate
- Laud
- Forsake
- Irritate
- In good health
- Grow old
- Prosecute
- Monkey wrench
- Resounded
- Range
- Demanding
- Wretchedness
- Adhere
- Heroes

## " The Most Beautiful Golf Course in Texas. " \*



Tucked away in historic Salado, just 45-minutes north of Austin on I-35, is the most beautiful golf course in Texas. The unique No. 3 green on our challenging 18-hole Robert Trent Jones II golf course promises an unforgettable experience.

Golf Packages starting at \$56.00 per person with 1 night lodging. Call for details. Rates effective November 16, 1996-March 14, 1997. Ask about our 7 night vacation package.

"If you can't relax and enjoy golf at Mill Creek, you can't do it anywhere." \*



**Mill Creek**

THE HEART OF TEXAS

\* Quotes are excerpts from  
Great Texas Golf by Pat Seelig,  
Wordware Publishing, Inc.



P.O. Box 67, Salado, TX 76571  
1-800-736-3441 817-947-5141

**SOLUTION-ACROSS**  
1. Habit 5. Rapid 8. Aside 9. Awful 10. Stays 11. Light 12. Even  
13. Arrest 17. Single 18. Exempt 20. Item 25. Noted 26. Ocean  
27. Olive 28. Excel 29. Deter 30. Soggy

**SOLUTION-DOWN**  
1. Hearse 2. Battle 3. Tally 4. Bingo 5. Restore 6. Praise 7. Desert  
13. Vex 14. Fit 15. Age 16. Sue 17. Spanner 18. Echoed 19. Extent  
21. Taxing 22. Misery 23. Stick 24. Idols



# Central Texas Area Museum hosts Readers & Writers Roundtable

The Central Texas Area Museum, Salado will hold its Readers and Writers Roundtable, 2 p.m. March 16, at the museum. The annual event which features new releases, about Texas and Texans, primarily authored by Texans, benefits the Museums educational programs.

This year, featured books and authors include *Captain Bill McDonald, Texas Ranger* by Albert Bigelow Paine, *The Fall of the Duke of Duvall* by John E. Clark, *The Personal Correspondence of Sam Houston, Volume 1: 1839-1845* edited by Madge Thornall Roberts, *The Legend of Catfish and Little Bream* by Ronnie Wells, and *Bill Clements: Texian to His Toenails* by Carolyn Barta.

Originally published in 1909, *Captain Bill McDonald, Texas Ranger*, is a fascinating account of the colorful life of Texas' most famous Ranger. The originator of the Ranger motto "No man in the wrong can stand up against a fellow that's in the right and keeps on coming." Captain McDonald's

picturesque language and daring exploits have seldom been equaled in Ranger lore.

This selection will be presented by Col. (RET) Otto Scharth of Temple, former Director of Military Affairs at the University of Mary Hardin Baylor. During his 32-year military career Scharth served in Japan, Korea, and Vietnam, as well as with Patton's 3rd Army in the European theater.

*The Fall of the Duke of Duvall*, is the story of "El Gran Patron," George Pharr's domination of South Texas' political and financial life. This book includes the saga of the government's efforts to finally bring about the downfall of his four-decade reign. John Clark, a former federal prosecutor, is a native of Austin.

Madge Roberts repeats the magic she created in *Star of Destiny* which chronicled the lives of her great grandparents, Sam and Margaret Houston, in this new release.

The first of six volumes of

the previously unpublished correspondence of Sam Houston, *The Personal Correspondence of Sam Houston, Volume 1*, will illuminate all lovers of Texana, scholar or not.

*The Legend of Catfish and the Little Bream*, artist Ronnie Wells, of Salado, has created a new children's classic, in this beautifully illustrated collector's book. Wells is the recipient of numerous honors and awards, including selection as Texas State Sculptor by the 71st Legislator and Sculptor of the Year 1993, World Wildlife Exposition.

This biography of the first Republican governor since reconstruction, William P. Clements, presents a vivid picture of this "antagonist of Texas house wives." *Bill Clements: Texan To His Toenails* will interest all political history "buffs," friend or foe. Author Carolyn Barta has been a political writer, editor and columnist for the Dallas Morning News for 30 years.

## Elder law new legal specialty, concerning group of people

by Dan Morales  
Texas Attorney General

AS YOUR Attorney General, I have been increasingly involved in issues that affect senior Texans: the quality of long-term care, the prosecution of elder abuse, Medicaid fraud control, and consumer fraud that targets elders. I believe we owe our senior citizens respect, protection and the highest standard of care.

In the private sector, the legal profession has seen the emergence of a new specialty: elder law. Elder law differs from traditional legal specialties in which the lawyer focuses on one body of law (taxes, insurance, criminal law, etc.). Instead, the practice of elder law covers all potential specialties that affect one particular group of people - senior citizens - many of whom live on a fixed income.

If you are a senior Texan, or if you are concerned about an elderly friend or family member, perhaps you have considered hiring an attorney. The following information may help you to decide whether an elder law specialist would be right for you.

### Why is this new field growing?

In part, the growth mirrors changes in our population.

According to the U.S. Census Bureau, 35 million Americans are now over age 65, or roughly 13 percent of the nation's population. The fastest growing segment of this group is people over age 85. According to a report by the U.S. Senate Committee on Aging, nearly half of all senior citizens will spend time in a nursing home. While many of these stays are brief, such as for recovery after surgery, many others involve long-term residence.

The field of elder law covers a wide and growing range of topics. In addition to their traditional work in probate, wills, and trust and estate planning, elder law specialists are now involved in such diverse areas as:

- \* planning for disability or incapacity through living wills, living trusts, and durable power of attorney documents
- \* establishing eligibility for Social Security, Medicare and Medicaid benefits
- \* long-term care, including patients' rights, quality of care, and long-term care insurance
- \* elder fraud and abuse
- \* grandparents' visitation rights
- \* age discrimination at work
- \* housing problems (mortgages, housing discrimination, etc.)
- \* conservatorships and guardianships

\* retirement and pension benefits.

### Should you retain an elder law specialist?

Begin by asking if you have a problem that requires the services of an attorney, or if in fact you have a social services or medical question. If you are not sure, ask a trusted friend, your clergy, or a social worker for advice. You may also call the Legal Hotline for Older Texans at (800) 622-2520 (512-477-3950 in Travis County) for a free over-the-phone consultation. Staff at the Legal Hotline can help you decide whether your problem merits retaining the services of an attorney.

Ask for referrals from local senior citizen groups, your clergy, other attorneys, and social service agencies. While the State Bar of Texas does not certify elder law specialists, its lawyer referral service (800 252-9690) will provide you with the names of attorneys in your area for your consideration.

Before retaining an attorney, ask for references, and check them out thoroughly. Ask how much experience the attorneys have, and about the aspects of elder law that they regularly deal with. Ask about the fee you will be charged.

See *Elder Law*, page 9B



*Sir Wigglesworth*  
Antiques & Other Passions

A Must While Visiting Salado

Homemade Fudge

Rock Creek at Main

Salado

OPEN THURS.-MON.

947-8846

*Somewhere in Time*

HAND-CRAFTED TEXAS COUNTRY FURNITURE  
• ANTLER ART • ANTIQUES  
No. 3 ROCK CREEK DRIVE  
SALADO, TEXAS 817/947-4609

**Seasons**  
OF SALADO  
Gourmet Coffee • Tea Pots  
Accessories & Gifts

#2 Rock Creek Dr.  
Open Daily (817) 947-8250

**Classic**  
Antiques & Collectibles  
Located at Heirlooms  
511 N. Main St. • Salado  
(817) 947-0336



**Heirlooms** A Gallery of Gifts,  
Fine Arts,  
and Antiques

The presentation of the quality works and Collections of individual owners enhances your shopping pleasures while in Salado

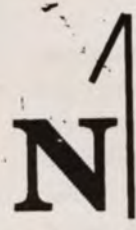
(817) 947-0336 • 511 N. Main St. Salado  
Open Daily 10 a.m.-6 p.m.

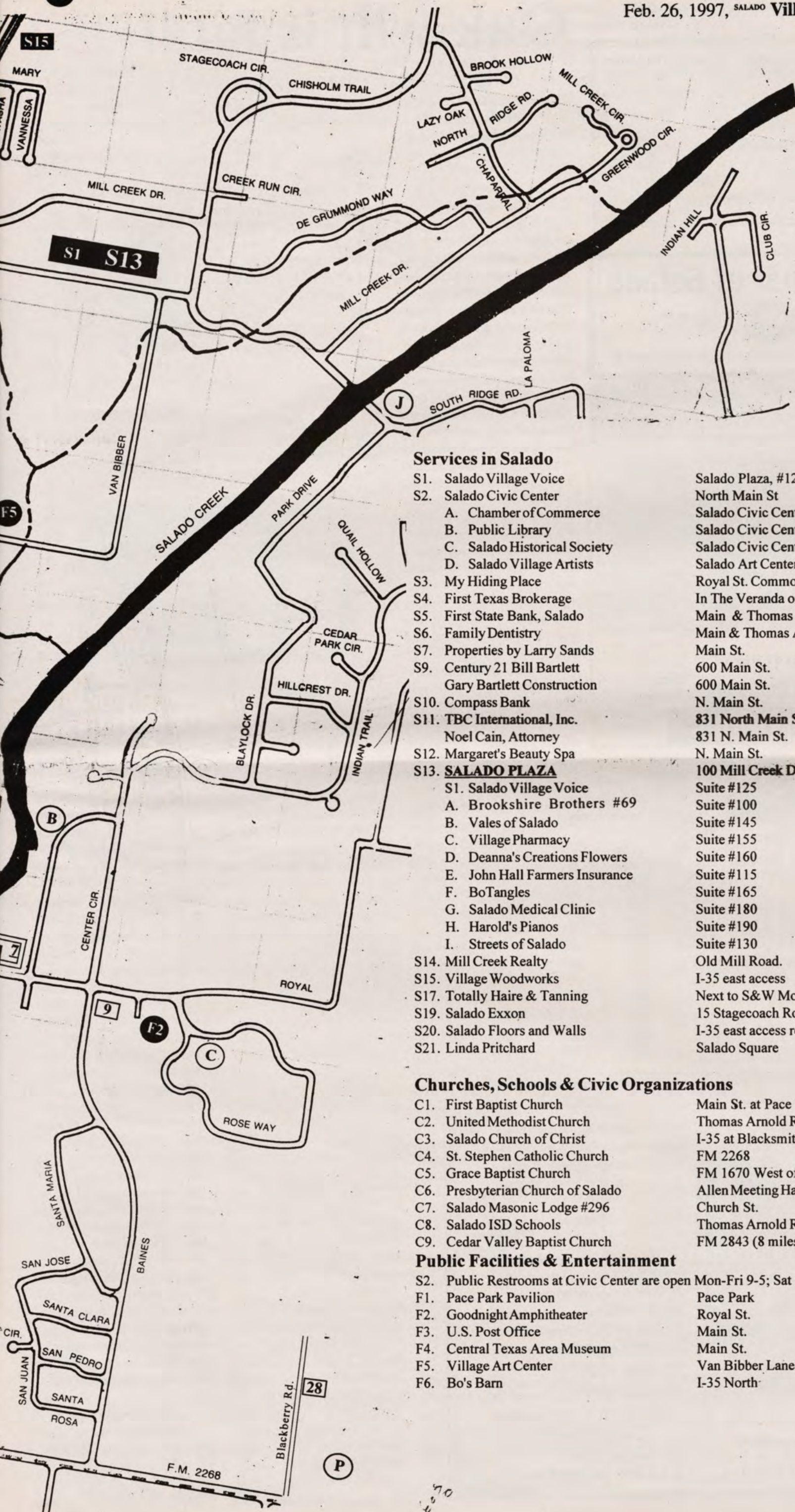
**Shopping in Salado**

- |   |                                     |              |
|---|-------------------------------------|--------------|
| 1. Wells Gallery                          | Next to Stagecoach Inn              | 817/947-0311 |
| 2. Salado Pottery                         | Next to Stagecoach Inn              | 817/947-5935 |
| 3. Salado Galleries                       | Main Street                         | 817/947-5110 |
| 4. <b>SHADY VILLA</b>                     | Main St and Royal                   |              |
| A. Gregory's                              | Shady Villa on Main St.             | 817/947-5703 |
| B. Salado Country Antiques                | Shady Villa on Main St.             | 817/947-8363 |
| C. Sweet Nut Things                       | Shady Villa on Main St.             | 817/947-8088 |
| 5. The Dusty Rose                         | Royal St.                           | 817/947-9215 |
| 5A. Peddlers Alley                        | Behind Museum off Main              | 817/947-9722 |
| 6. Spring House Antiques                  | Royal St.                           | 817/947-0747 |
| 7. <b>ROYAL STREET COMMONS</b>            | Royal St. & Center Circle           |              |
| A. Red Barn Antique Mall                  | Royal St. Commons                   | 817/947-1050 |
| B. Kevlin Galleries & K's Champagne Taste | Royal St. Commons                   | 817/9470036  |
| 8. <b>ONE ROYAL</b>                       | Royal St. at Main                   |              |
| A. Grace Jones                            | One Royal                           | 817/947-5555 |
| B. The Royal Emporium                     | Main & Royal                        | 817/947-5718 |
| 9. Wishing Well Antiques & Things         | 300 Baines St.                      | 817/947-1997 |
| 10. <b>OLD MILL PLAZA</b>                 | Main St. at the Creek               |              |
| B. Accents of Salado                      | Old Mill Plaza                      | 817/947-5908 |
| 11. The Christmas Shop                    | Green House on the Creek            | 817/947-5561 |
| 12. <b>CREEKSIDE CENTER</b>               | Main St. at Pace Park               |              |
| A. Susan Marie's Boutique                 | Creekside Center                    | 817/947-5239 |
| B. Strawberry Patch                       | Creekside Center                    | 817/947-9955 |
| C. Bundle of Joy                          | Creekside Center                    | 817/947-0609 |
| D. Prellop Fine Art Gallery               | Creekside Center                    | 817/947-3930 |
| 14. Christy's of Salado                   | 300 Main St.                        | 817/947-0561 |
| 15. <b>SALADO SQUARE</b>                  | Main St.                            |              |
| A. Magnolia's on the Square               | Salado Square on Main St.           | 817/947-0323 |
| 1. Just for Him                           | Magnolia's on the Square            |              |
| 2. Penelope's                             | Magnolia's on the Square            |              |
| 3. Papagayo                               | Magnolia's on the Square            |              |
| 4. Celebrate Salado                       | Magnolia's on the Square            |              |
| B. Cowgirls, Indians & Outlaws            | Salado Square                       | 817/947-0322 |
| C. Main Street Place                      | Salado Square                       | 817/947-9908 |
| D. Another Day                            | Salado Square                       | 817/947-0300 |
| E. Barnhill-Britt Furniture               | Salado Square                       | 817/947-3277 |
| 16. Village Boutique                      | N. Main St.                         | 817/947-9100 |
| 17. Pink Rose Tea Room & Gift Shop        | N. Main St.                         | 817/947-9110 |
| 18. <b>SHOPS ON ROCK CREEK</b>            | Main St. at Rock Creek Dr.          |              |
| A. Sir Wigglesworth                       | Main at Rock Creek                  | 817/947-8846 |
| B. Seasons of Salado                      | Rock Creek                          | 817/947-8250 |
| C. Somewhere in Time                      | #3 Rock Creek                       | 817/947-4609 |
| 19. <b>THE COLONY</b>                     | North Main St                       |              |
| A. The Royal Salamander                   | 221 N. Main St.                     | 817/947-1772 |
| 20. Heirlooms Shopping Center             | N. Main & Blacksmith                | 817/947-0336 |
| A. Classic Antiques & Collectibles        | Heirlooms Shopping Center           |              |
| 21. A.K.s Treasures                       | N. Main St.                         | 817/947-5832 |
| 22. Hutchens House                        | N. Main St.                         | 817/947-8177 |
| 23. <b>OLD TOWN SALADO</b>                | Across from Salado Civic Center St. |              |
| A. The Store                              | Old Town Salado                     | 817/947-9000 |
| B. The Gallery                            | Old Town Salado                     | 817/947-9000 |
| C. MJ's Country Corner                    | Old Town Salado                     | 817/947-8885 |
| D. Aunt Granny's                          | Old Town Salado                     | 817/947-5520 |
| E. Roti-Chef                              | Old Town Salado                     | 817/947-4797 |
| F. Angelic Herbs                          | Old Town Salado                     | 817/947-1909 |
| G. Texan by Design                        | Old Town Salado                     |              |
| H. Lady's Tee Box                         | Old Town Salado                     | 817/947-5597 |
| 24. Salado Antique Mall                   | N. Main St.                         | 817/947-1010 |
| A. Salado Haus                            | N. Main St.                         | 817/947-5537 |
| 25. Fletcher's Books & Antiques           | N. Main St.                         | 817/947-5414 |
| 26. Olde Fowler House Antiques            | N. Main St.                         | 817/947-0710 |
| 27. Robertson's Hams & The Choppin' Block | I-35, Exit 285                      | 817/947-5562 |
| 28. Hill Country Cottage Gardens          | 152 Blackberry Road                 | 817/947-0416 |
| 29. glass coins                           | 1209 N. Stagecoach Rd.              | 817/947-4423 |
| blass floral                              | 1209 N. Stagecoach Rd.              | 817/947-5529 |

**Dining & Lodging**

- |                                    |                            |              |
|------------------------------------|----------------------------|--------------|
| A. Stagecoach Inn                  | I-35 exits 283, 284        | 817/947-5111 |
| B. Inn on the Creek                | Center Circle              | 817/947-5554 |
| C. The Rose Mansion                | One Rose Way               | 817/947-8200 |
| D. The Salado Mansion              | Main St.                   | 817/947-5157 |
| E. The Inn at Salado               | Main St.                   | 817/947-0027 |
| F. Browning's Courtyard Cafe       | Salado Square              | 817/947-8666 |
| G. Cathy's Boardwalk Cafe          | Old Town Salado            | 817/947-8162 |
| H. Sann's Family Restaurant        | Salado Plaza               | 817/947-0015 |
| J. Mill Creek Country Club         | Old Mill Rd.               | 817/947-5141 |
| K. Cowboy's Barbecue               | I-35, west side            | 817/947-5700 |
| M. Green Gables Bed & Breakfast    | 433 Royal St.              | 817/947-0520 |
| N. Salado Burger King              | 15 Stagecoach Rd.          | 817/947-8060 |
| O. Brambley Hedge Bed & Breakfast  | 1 mile east on FM 2268     | 817/947-1914 |
| P. Country Place Bed & Breakfast   | 2.7 miles east on FM 2268  | 817/947-9683 |
| Q. Dairy Queen                     | I-35 at Thomas Arnold      | 817/947-5406 |
| R. Salty Water Flatt               | Box 2249 Sulphur Wells Rd. | 817/947-1138 |
| 17. Pink Rose Tea Room & Gift Shop | N. Main St.                | 817/947-9110 |





**Services in Salado**

- S1. Salado Village Voice
- S2. Salado Civic Center
  - A. Chamber of Commerce
  - B. Public Library
  - C. Salado Historical Society
  - D. Salado Village Artists
- S3. My Hiding Place
- S4. First Texas Brokerage
- S5. First State Bank, Salado
- S6. Family Dentistry
- S7. Properties by Larry Sands
- S9. Century 21 Bill Bartlett  
Gary Bartlett Construction
- S10. Compass Bank
- S11. TBC International, Inc.  
Noel Cain, Attorney
- S12. Margaret's Beauty Spa
- S13. **SALADO PLAZA**
  - S1. Salado Village Voice
  - A. Brookshire Brothers #69
  - B. Vales of Salado
  - C. Village Pharmacy
  - D. Deanna's Creations Flowers
  - E. John Hall Farmers Insurance
  - F. BoTangles
  - G. Salado Medical Clinic
  - H. Harold's Pianos
  - I. Streets of Salado
- S14. Mill Creek Realty
- S15. Village Woodworks
- S17. Totally Haire & Tanning
- S19. Salado Exxon
- S20. Salado Floors and Walls
- S21. Linda Pritchard

- Salado Plaza, #125 817/947-5321
- North Main St 817/947-8300
- Salado Civic Center 817/947-5040
- Salado Civic Center 817/947-9191
- Salado Civic Center
- Salado Art Center at the Civic Center
- Royal St. Commons 817/947-HIDE
- In The Veranda on Main 817/947-5577
- Main & Thomas Arnold 817/947-5852
- Main & Thomas Arnold 817/947-5242
- Main St. 817/947-5580
- 600 Main St. 817/947-5050
- 600 Main St. 817/947-5825
- N. Main St. 817/947-5051
- 831 North Main St. 817/947-4717**
- 831 N. Main St. 817/947-4030
- N. Main St. 817/947-9360
- 100 Mill Creek Dr.**
- Suite #125 817/947-5321
- Suite #100 817/947-8922
- Suite #145 817/947-8643
- Suite #155 817/947-3185
- Suite #160 817/947-0222
- Suite #115 817/947-3151
- Suite #165 817/947-4747
- Suite #180 817/947-9044
- Suite #190 817/947-4677
- Suite #130 817/947-1313
- Old Mill Road. 817/947-8800
- I-35 east access 817/947-0345
- Next to S&W Mobil 817/947-0700
- 15 Stagecoach Road 817/947-5660
- I-35 east access road 817/947-0048
- Salado Square 817/947-HAND

**Churches, Schools & Civic Organizations**

- C1. First Baptist Church Main St. at Pace Park 817/947-5465
- C2. United Methodist Church Thomas Arnold Rd. 817/947-5482
- C3. Salado Church of Christ I-35 at Blacksmith Rd. 817/947-5241
- C4. St. Stephen Catholic Church FM 2268 817/947-8037
- C5. Grace Baptist Church FM 1670 West of Salado 817/947-5917
- C6. Presbyterian Church of Salado Allen Meeting Hall 817/947-9935
- C7. Salado Masonic Lodge #296 Church St.
- C8. Salado ISD Schools Thomas Arnold Road. 817/947-5479
- C9. Cedar Valley Baptist Church FM 2843 (8 miles west) 817/947-0148

**Public Facilities & Entertainment**


- S2. Public Restrooms at Civic Center are open Mon-Fri 9-5; Sat 10-5, Sun 1-5
- F1. Pace Park Pavilion Pace Park 817/947-5040
- F2. Goodnight Amphitheater Royal St. 817/947-8887
- F3. U.S. Post Office Main St. 817/947-5322
- F4. Central Texas Area Museum Main St. 817/947-5232
- F5. Village Art Center Van Bibber Lane
- F6. Bo's Barn I-35 North 817/947-8111

**Spring House Antiques**

A shopping experience  
of antique glass, furniture,  
gifts & decorative accents

Royal St. & College St.  
Salado 817-947-0747

**Rotary Club of Salado**

96  97

Act with integrity, serve with love, work for peace.

We meet at the Allen Hall on the grounds  
of the Inn at Salado 7:45 a.m. Tuesdays.  
For more information, call 947-0027

**My Hiding Place**

the retreat for your body, mind & soul

- Barber
- Beauty
- Day Spa



Now Located  
at Royal St. Commons

Mon-Sat  
By App't. Only

817/947-HIDE

Mary Bellaire  
Owner

**Red Barn  
Antique Center**

Exclusively Antiques

A collection of professional  
dealers featuring fine antiques  
as well as quality antique  
accent pieces.

Royal Street Commons  
2 blocks east of Stagecoach  
Daily 10-5 947-1050



**Inn on the Creek • Reue House  
Holland House • Giles-Kindred House  
Sally's Cottage • Osage Cottage**  
Center Circle & Royal Streets  
947-5554

**"Salado's only full-service Bed & Breakfast Inn & Restaurant"**

- ◆ 20 Guest Rooms w/ private baths
- ◆ Elegant surroundings for private affairs
- ◆ Facilities for business retreats
- ◆ Candlelight dining in an elegant atmosphere overlooking Salado Creek

**This Weekends' Featured Menu**  
Chicken Paprikas with  
Caraway Noodles  
Sue's Black Walnut Cake  
Call for reservations!

Grace, Elegance  
and Fine Dining...

# Oak wilt is fatal

Important to recognize symptoms early

The following information is taken from a pamphlet distributed by the Forestry Service.

### Introduction

Oak wilt, one of the most destructive tree diseases in the United States, is killing oak trees in central Texas at epidemic proportions (fig. 1). Oak wilt is an infectious disease caused by the fungus *Ceratocystis fagacearum*, which invades and disables the water-conducting system in susceptible trees. All oaks (*Quercus* spp.) are susceptible to oak wilt to some degree, but some species are affected more than others. Red oaks, particularly Spanish oak (*Q. texana*), Shumard oak (*Q. shumardii*), and blackjack oak (*Q. marilandica*), are extremely susceptible and may play a unique role in the establishment of new oak wilt infections. White oaks, including post oak (*Q. stellata*), bur oak (*Q. macrocarpa*), and chinkapin oak (*Q. muehlenbergii*), are resistant to the fungus and rarely die from oak wilt. Live oaks (*Q. virginiana* and *Q. fusiformis*) are intermediate in susceptibility to oak wilt but are most seriously affected due to their tendency to grow from root sprouts and form vast interconnected root systems that allow movement (or spread) of the fungus between adjacent trees. The successful management of oak wilt depends on correct diagnosis and an understanding of how the pathogen spreads between different oak species.

### Spread of Oak Wilt Spread Through Roots

Live oaks tend to grow in large, dense groups with interconnected roots. The fungus may be transmitted from one

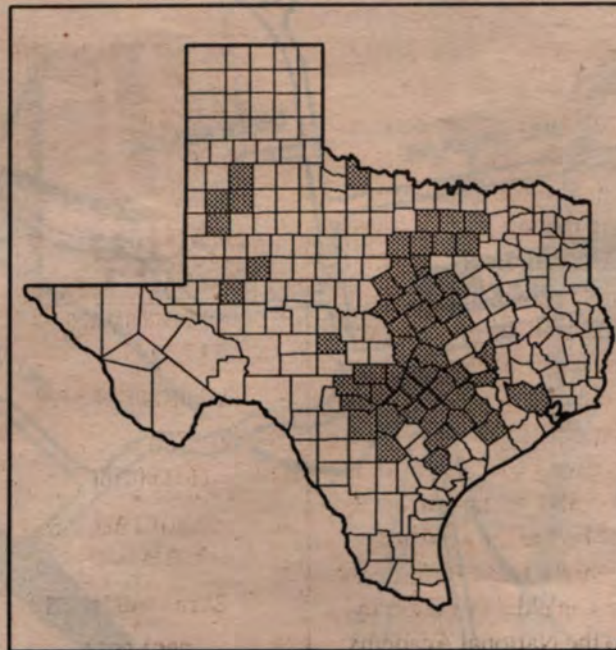


Figure 1: Shaded areas indicate Texas counties with confirmed cases of oak wilt, including Bell County.



Figure 2: Live oak leaves showing veinal necrosis.

tree to another through these root connections. Root transmission is the only proven means of spread among live oaks. As a result, patches of dead and dying trees (infection centers) are formed. Infection centers among live oaks in Texas expand at an average rate of 50 ft per year, varying from no spread to 150 ft in any one direction. Occasionally, the oak wilt fungus is transmitted through connected roots between red oaks, but movement through roots is slower in red oaks and occurs over shorter distances than in live oaks.

### Establishment of New Infections

Red oaks appear to play a key role in the establishment of new infection centers. The oak wilt fungus may be spread overland by insect vectors and by man through movement of wood from infected red oaks to other locations. Specialized spore-producing structures called fungal mats form beneath the bark of certain diseased red oaks in late fall and especially in spring but do not form on live oaks. Individual fungal mats produce spores for only a few weeks. The fruity odor of fungal mats attracts many kinds of insects, the most important of which are believed to be sap-feeding nitidulid beetles. The fungus may be transmitted by these small beetles as they emerge from mats to feed on fresh wounds on healthy oaks. Fun-

gal mats are most commonly formed on standing trees, but they can also develop on logs, stumps, and fresh firewood cut from diseased red oaks.

### Identification of Oak Wilt

Foliar symptoms, pattern, of tree mortality, and the presence of fungal mats can be used as indicators of oak wilt. However, isolation of the fungus in the laboratory may be required to confirm the diagnosis. A trained expert should be consulted when in doubt.

### Patterns of Tree Mortality

Most live oaks defoliate and die over a 1- to 6-month period following initial appearance of symptoms. Some live oaks take longer to die, and a few untreated trees may survive many years in various stages of decline. A few live oaks in oak wilt centers escape infection or may be resistant to the fungus and apparently remain unaffected by the disease.

Red oaks seldom survive oak wilt and often die within 3 to 4 weeks following the initial appearance of symptoms. During summer months, diseased red oaks often can be spotted from a distance because of their bright autumn-like coloration in contrast to the surrounding greenery.

### Foliar Symptoms

Leaves on diseased live oaks often develop chlorotic

## Planning for the future

Senior citizens share common concerns: quality of life and control over their affairs as they grow older, the threat of serious illness and steep medical bills, maintaining an adequate income, and safeguarding the interests of loved ones. Unfortunately, most of us cannot know which of these concerns will be the biggest challenge we face in old age. Many elder law attorneys report that clients come to them during times of crisis. It is wise to plan as far ahead as possible before the need arises.

For more information on choosing an elder law attorney, write to the National Academy of Elder Law Attorneys at 1604 N. Country Club Road, Tucson, Arizona 85716, or call them at (520) 881-4005. You may also access this information on the Internet at <http://www.naela.com>.

## Pay for postage with your plastic

The Salado post office is now accepting the following credit cards: American Express, Discover, Visa and MasterCard.

You can use your card to purchase postage and package products or to pay your box rent.

The post office also accepts most debit and ATM cards for all its services and products.

There is no service fee or supplemental charges for using your credit or debit card at the post office. Your card *must* be signed to be valid.

The U.S. Postal Service is striving to meet its customer expectations and needs, the local postmaster said. "Service is part of our name and service is the goal of the Salado post office," she said. "Thank you for letting us serve you."

## Jung Society sets registration for Early Spring

The Jung Society of Austin is holding registration for Early Spring classes. Classes include: "Being/the Path" taught by David Collins, "The Soul's Code: In Search of Character and calling" taught by Sara McMillan and "Art Literature and the Unconscious" taught by Marilyn Black. Classes begin March 2.

For further information, please stop by the Jung Society at Commerce Park, 5555 N. Lamar, Bld. H., Ste. 106 or call 458-1108, Tue.-Sat., 12 noon - 5 p.m.



**MJs**  
**COUNTRY CORNER**

OLD TOWN SALADO #6  
817/947-8885

HANDMADE CRAFTS  
GIFTS & COLLECTIBLES  
COOKIE PRESSES & MOLDS  
SAVANNAH MIXES  
COCA COLA REDEMPTION CENTER

# Old Town Salado

Fashions  
Cafe  
Gifts  
Collectables  
Art Gallery  
Herbs

"Hand-Crafted Southwestern Furniture from Original Designs,"

**TEXAN by DESIGN**

made exclusively with distinguished aged wood.

A furniture showroom that's just southwest of the usual.

Come see our showroom at #7 Old Town Salado Main St. across from the Civic Center

**Aunt Granny's**

#12 Old Town Salado  
817-947-5520  
Mary Lynn Totty, Owner

*The best antiques are old friends!*

**NATURAL HEALTH CLASSES BEGIN APRIL 3**

**Angelic Herbs**  
Guardian of your good health  
#10 Old Town Salado

We offer a full line of natural health services, Nature's Sunshine Products, Vitamins, Minerals, Gifts, Herbal Baths and Teas, Homeopathics, and more!

C.J. Harbuz, C.N.H.P., Owner

**Lady's Tee Box**  
Fine Golf Wear & Accessories

#3 Old Town Salado

- Marcia
- Sport Haley
- Alexa Sterling
- Lily of Beverly Hills
- Natty
- Leon Levin
- East Brook

947-5597  
Closed Wed & Sun

**Spring Fashions Arriving**

- City Girl
- On The Verge
- Starfire
- Susan Bristol
- Crystal Handwovens

**The Store**  
in Old Town Salado  
Main St. across from the Salado Civic Center  
Open Daily (817) 947-9000

**The Gallery**  
in Old Town Salado

Texas Artists  
George Boutwell,  
B. Herd,  
Larry Dyke  
& others

817/947-9000

**CATHY'S BOARDWALK CAFE**  
**SEAFOOD BUFFET**

FRIDAY, FEBRUARY 28  
5:30 - 8:00 PM  
\$8.95 PER PERSON/\$3.95 UNDER 10  
(817)947-8162

FRIED SNAPPER FINGERS  
FRIED SHRIMP & CLAMS  
BLACKENED CATFISH  
FLOUNDER WITH CRABMEAT STUFFING  
OVEN ROASTED HERB CHICKEN  
STEAMED GARDEN VEGETABLES  
BAKED POTATO BAR  
ASSORTED COLD SALADS  
JACK DANIELS PECAN PIE

Antique Restoration & Repair



**VILLAGE  
WOODWORKS**

Furniture Refinishing/Stripping

(817) 947-0345 Salado, TX

Salado Country Antiques

Fine estate pieces

Roseville • Pickard China  
Royal Doulton • Flow Blue  
Carnival Glass • Wedgewood  
Silverplate • Sterling  
Silver • China • Linens • Gifts

Shady Villa on Main St.  
(817) 947-8363 Open Daily



*The Strawberry  
Patch*

Distinctive Gifts  
Gourmet Texas Foods

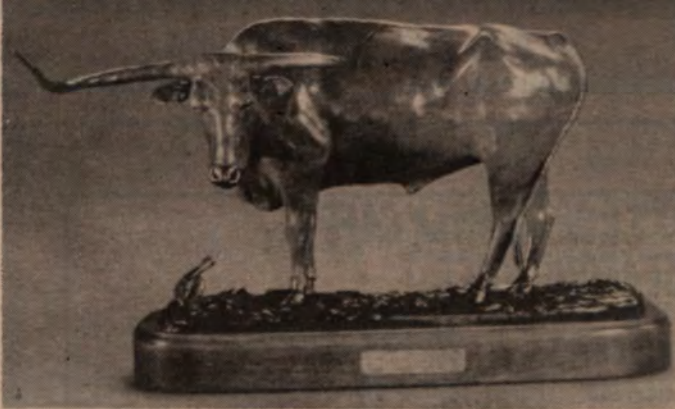
Creekside Center • Main St. • Salado  
Open Daily 947-9955

**Brambley Hedge**  
A Fine Country Inn

And a fine gift shop featuring fresh & dried flowers,  
antiques & accessories for the home and garden.

By appointment.  
Carol Anne Hanks

1530 FM 2268 (Holland Rd.)  
1 mile east of Main St. Salado  
817/947-1914

**A Proud Legacy by J. DuBose**

Original Landscapes, Seascapes, Westerns  
by C.W. Dykes, Lee Herring, Larry Prellop, Ruthven,  
Dennis Schmidt, Jim Ward and other artists

• Limited Edition Prints by G. Harvey, Fracé • Bronzes

**Prellop Fine Art  
Gallery**

Creekside Center Main St. Salado  
Open Daily (888) 461-2605 (817) 947-3930

## Belton Acoustic Concert Series presents Austin singer-songwriters

The Belton Acoustic Concert Series presents Austin-based singer-songwriters Christine Albert and Chris Gage March 1.

Christine Albert has performed her exciting brand of original Texas music on Austin City Limits and TNN's The Texas Connection, at the Kerrville Folk Festival and Austin Aqua Festival, and at venues throughout Europe, the United States, Mexico and Australia. She received an award for Female Country Vocalist of the Year (1993) and Kerrville Music Awards' Outstanding Female Vocalist of 1996. With fellow Austinite Jimmy LaFave she shared top honors for both Harmony Vocalist and Song of the Year. An active community volunteer, Christine Albert is a co-founder of the Austin Songwriters Group, and public spokesperson for The Austin Rape Crisis Center.

Chris Gage is a multi-talented musician, vocalist and songwriter. For eight years he played piano for the legendary Roy Clark, and he later spent three years playing guitar for country great Jimmie Dale Gilmore. He has appeared on numerous television shows, and shared stages with artists like David Byrne, Nanci Griffith and Roy Acuff. He produced and performed on "Crazy", a duet featuring Willie Nelson and Jimmie Dale Gilmore, and his own songs have been recorded by



Christine Albert and Chris Gage will perform March 1 in Belton

Gilmore and country rocker Gary P. Nunn.

Together, Christine Albert and Chris Gage have created a sound that proudly refuses to be categorized: a heady blend of country, folk, French, bluegrass, blues, rock and soul that is powerful, original, aggressive and heartfelt Texas music.

Austin recording artist Diana Jones will perform an opening set.

The concert will be held in the smoke- and alcohol-free environment of the Parish Hall at Saint Luke's Episcopal Church, at Beal and 22nd Streets in Belton. The doors open at 7 p.m., the music begins at 7:30, and the \$7.00 admission includes child-care for all preteens, and refreshments throughout the evening. For more information, please call (817) 778-5440.

### Evening of Elegance April 11

The Fourth Annual Evening of Elegance will take place at the Salado Civic Center on Main Street at 7 p.m. April 11.

The benefit performance will feature the Anando Trio, with Miranda Dale, violin, Margaret Coltman, cello, and Felicity Coltman, piano.

The trio will be joined by Bruce Williams, violist. The program will include the Dvorak Piano Trio, Opus 90;

Schubert Adagio and Rhondo Concertant and Turina Piano Quartet, Opus 67. A reception with the renowned performers will immediately follow the program.

Admission at the door will be \$12. All proceeds benefit Peaceable Kingdom. To obtain additional information or if you are interested in being a sponsor, please call Denise Thomssen at (817) 947-8901.

### OWC cookbook available

The Officers' Wives Club personalized cookbook is available now. The New Cookbook "Recipes Shared Very Proudly" can be purchased for \$15 plus tax.

Supplies are limited. To reserve your copy call the OWC Hotline 286-0957. The cookbook will also be available for purchase at the monthly luncheon.

### Temple Area A&M Club will meet at noon Feb. 28

The Greater Temple Area A&M Club monthly luncheon will be held at Clem Mikeska's Banquet Room at noon Feb. 28.

Man Foundation will be the guest speaker.

Cost for the luncheon will be \$7.50 per person. If you need more information call the Aggie Hotline at 791-TAMU

Liz Dalton with the 12th

**Q.**

What makes a specialty store special?

**A.**

Beautiful clothes, exquisite accessories, people who know fashion, who know how to help... and you.

**Susan Marie's  
Salado**

Main St. 947-LADY,  
Mon -Sat. 10-5.

# People burned by food cooked in microwaves on the rise

by Ilene C. Miller  
Co. Ext. Agent

Along with a growth in sales of microwave ovens has come an increase in the number of people burned by foods cooked in them. Many of these burns could be prevented if people understood how microwaves heat food.

Microwave ovens create heat by agitating the molecules in food. Many people believe that microwaves heat food from the center out. This is not true. The part of the food that heats first is about one inch from the exterior. If the food is two inches around or less, this is the center. Then the heat is radiated in all directions, toward the center and the edges.

Microwave action is not very uniform especially with

liquids. That is why hot and cold spots typically develop.

Due to the "hot spots" created by heating liquids in the microwave oven, baby bottles should NOT be heated in them. Even testing the temperature of the milk by feel may not enable you to detect a hot spot. The Shriners Burn Institute indicates that a major portion of microwave mouth scald burns occur in children under seven months of age.

In addition to mouth scalding, burns from steam and handling containers are also hazards. Microwave-safe containers are not heated by microwave, but the food can make them hot. Covered foods build up steam which can burn hands and face when the covering is removed.

Microwave burns are preventable if you use the follow-

ing precautions:

\* Stir foods partway through cooking and after cooking to ensure even heating.

\* Always use a pot holder. Don't assume that a microwaved container is safe to handle with your hands.

\* Open any covering away from the body to let steam escape.

\* Never heat a baby bottle in a microwave oven.

\* Don't let children use the microwave unless they understand and follow these precautions.

Educational programs conducted by the Texas Agricultural Extension Service serve people of all ages regardless of socioeconomic level, race, color, sex, religion, national origin or disability.

## Congressman Chet Edwards Staying In Touch



### WHY WE NEED A BALANCED BUDGET AMENDMENT

If you were president of the United States, what could you do with \$248 billion?

You could give a tax refund of \$954 to every man, woman and child in America. You could balance the federal budget and still give a \$475 tax refund to every American citizen. You could double the defense budget.

You could provide a college grant for every student in America, child care for the working poor and still have billions left over.

Sadly, American taxpayers will pay \$248 billion this year alone for interest on our national debt of \$5 trillion. That is \$248 billion that will not build one school, educate one child, train one American soldier or provide health care for one veteran or one senior citizen. What a shame!

Rather than investing in our future, taxpayers are having to pick up the tab for past spending habits of the federal government.

It took two hundred years of American history to reach a \$1 trillion debt level. From 1980 to 1996 that debt has increased five-fold to \$5 trillion and both Democrats and Republicans in Washington have been guilty of deficit spending.

In the last four years, Congress and the president have reduced the annual deficit from \$290 billion to \$107 billion. We are moving in the right direction toward a balanced budget by the year 2002, but the reality is there have been 38 deficit budgets in the last 40 years.

I don't just want a balanced budget for one year, I want a balanced budget for future generations and that is why I believe a balanced budget constitutional amendment is the most important

fiscal issue facing Congress in my lifetime.

While I respect those who honestly don't want to change the Constitution to balance the budget, I strongly disagree with the arguments used against the balanced budget amendment (BBA). Let's address several questions.

**1. Would the BBA allow flexibility in recessions and during national emergencies such as wars or natural disasters?** Yes. With a 60 percent vote of the House and Senate, the Congress can suspend the balanced budget requirement temporarily. In time of recession or emergency, this would allow more than adequate flexibility.

**2. Would the BBA threaten Social Security?** Absolutely not. In fact, the greatest threat to Social Security is that Social Security taxes are being used right now to pay for our government's annual deficits. Balancing the budget would put a halt to the theft of dollars that should be saved for Social Security.

**3. Is the BBA really needed since Congress and the President can balance the budget without it?** Yes. In theory they can balance the budget. In reality, they haven't done it in 38 out of the past 40 years. My philosophy is if it ain't broke, don't fix it, but if it's been broke for 38 out of 40 years, it's time to fix the process.

To save future generations from drowning in a sea of national debt, I think it's crucial that Congress pass a balanced budget amendment to the Constitution.

Congressman Chet Edwards  
700 S. University Parks Dr.  
Waco, Texas 76706  
817-752-9600

February 20, 1997

**Salado POTTERY**  
NEXT TO STAGECOACH INN  
Handcrafted  
Stoneware & Porcelain  
OPEN DAILY (817) 947-5935

**Fletcher's**  
Books & Antiques  
North Main Street  
947-5414  
OPEN DAILY

**A.K.'s Treasures**  
Quilts & Quilt Tops  
For Sale  
Homemade Candy Fri & Sat • Free Coffee Always  
**Anna Katherine Holland**  
N. Main St. Salado (817) 947-5832

NORTH MAIN  
SALADO, TEXAS (817) 947-9110  
**ROSE COTTAGE**  
Gifts & Antiques  
TEA SETS • CHILDREN'S BOOKS • PRINTS  
BEDROOM SUITES • ARMOIRES • STUFFED ANIMALS • COLLECTIBLES  
AND THE  
**PINK ROSE**  
Tearoom  
DELICIOUS FOOD & DESSERTS • RESERVATIONS NOT REQUIRED  
AVAILABLE FOR CELEBRATIONS • SEATING FOR 100  
HOURS • 10AM - 5PM  
CLOSED TUESDAYS

**SALADO HAUS**  
Antiques, Fenton Show Case Dealer  
Specialty Gifts  
"We Can Ship Anywhere In The U.S.A."  
550 Main St.  
Salado, TX 76571  
Tel: (817) 947-5537

**FARM & GARDEN SUPPLY**  
947-3613  
**Onion Plants** 1015Y, White Granex/Red Sweet  
**Vegetable Plants**  
Collards, Cauliflower, Cabbage, Strawberries, Broccoli  
**Bulk Garden Seed**  
**Bagged Fertilizer**  
**Weed & Feed**  
**Seed Potatoes:** Red & White  
Monday-Friday 8a.m.-5:30p.m.  
Saturday 8a.m.-12noon  
Just North of Salado Texaco Truckstop on I-35.  
(next to Sky Dive)




The Christmas Shop offers the finest selection of Christmas ornaments and much more, including designs by

**THE Christmas Shop**

- Christopher Radko • House of Hatten
- Annalee • Dean Griff's Charming Tales
- Tony Constanza Original Designs
- Gift Items • Children's books
- Orientalia • Christmas Trees

In the Green House on the Creek Open 10 a.m.-5 p.m.  
Pace Park Dr., Salado (817) 947-5561



**GREGORY'S**  
An American Crafts Gallery

An Expression of Art through the Media of Jewelry, Glass, Wood, and Fiber

2 Main St. • Box 588  
Salado, Texas 76571  
(817) 947-5703



**ACCENTS OF SALADO**

Unique Gifts for Home and Garden

...our contribution to stylish Southern living

101 N. Main St. at Pace Park Dr.  
947-5908 Open Daily

The Historic

**STAGECOACH INN**



**Superb Dining  
Delightful Motel**

Voted #1 by Texas Highways

**Salado, Texas  
817/947-5111**

# Oak Wilt

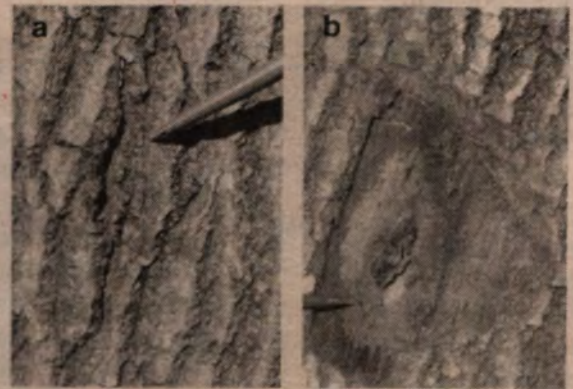
FROM Page 8B

(yellow) veins that eventually turn necrotic (brown), a symptom called veinal necrosis (fig. 2). Defoliation may be rapid, and dead leaves with brown veins often can be found under the tree for months after defoliation. Leaves may exhibit other patterns of chlorosis and necrosis, such as interveinal chlorosis, marginal scorch, or tip burn, but these symptoms are less reliable than veinal necrosis for diagnosing oak wilt in live oaks.

Foliar symptoms of oak wilt on red oaks are less distinct. In early spring, young leaves simply wilt, turning pale green and brown. Mature leaves develop dark-green, water-soaking symptoms or turn pale green or bronze, starting at the leaf margins and progressing inward.

### Fungal Mats

Fungal mats are reliable indicators for diagnosis of oak wilt (fig. 3 a, b). They most often form in spring on red oaks that developed advanced symptoms of oak wilt the previous late summer or fall. Red oak infections in late spring and summer usually do not give rise to fungal mats due to high temperatures and low soil moisture conditions. Fungal



**Figure 3:** Fungal mats on oak (a) crack in bark caused by fungal mat, (b) exposed fungal mat on Spanish oak. (photo courtesy Forest Service)

mats can be found by looking for inconspicuous narrow cracks in the bark leading to hollow areas between the bark and wood. They often have a distinctive odor similar to fermenting fruit. Fungal mats can be exposed for inspection by chopping away the loose bark.

### Laboratory Diagnosis

Oak wilt diagnoses may be confirmed by isolating the fungus from diseased tissues in the laboratory. Samples can be

submitted to: Texas Agricultural Extension Service, Plant Diagnostic Clinic, L. F. Peterson Building, Texas A&M University, College Station, TX 77843-2132. A county extension agent, Texas Forest Service forester, or trained arborist should be consulted for proper collection and submission of samples.

*Next week: Oak Wilt Disease Management and prevention*

## Fashion show

A member of the Central Texas Girls Choir models an outfit from Christy's in Salado during the choir's annual fashion show Feb. 22 at Central Texas College as Christy Arner (background) describes the outfit. Lara Lee of Salado was among the choir's models. (Photo by John Eubanks)



## Pick up your crying baby

Yes, Pick up your baby when he or she cries. You will not spoil your baby -- you will teach them to love and trust people. Holding them more when they are little will make them cry less when they are older.

Some babies cry because they have colic or are sick. If your baby cries more than three hours a day every day or has a high cry that sounds like pain take them to the clinic for a check up.

It is not your fault if your baby cries! Some babies cry more than others.

You can try:

\*Rocking or walking with the baby.

\*Rubbing the baby's tummy or back.

\*Feeding the baby more often.

\*Carrying the baby a lot, even when he or she is not crying.

\*A baby swing.

\*Holding the baby up to a mirror.

\*Shaking a rattle in front of baby's face.

\*A car ride.

\*A warm bath.

\*A stroller ride.

\*Calm sounds: a fan, soft music, a ticking clock, vacuum cleaner.

Try not to get upset, it will make the baby more upset. Stay calm.

### Hill Country

### Cottage Gardens

Nursery  
Cut Flowers  
Heirlooms  
Natives

Les McCollum  
Richard Teeler

152 Blackberry Rd.  
Salado, TX 76571  
817-947-0416

Wed-Sat 10-6, Sun 11-5  
Closed Mon & Tues