

# SALADO Village Voice

Car-Rt-Sort  
Bulk Rate  
U.S. Postage Paid  
Permit No. 50  
Salado, TX 76571

Volume XIX, Number 24 Wednesday, October 1, 1997 213 Mill Creek Dr. #125 P.O. Box 587 (254) 947-5321 Distributed Free

716 for, 78 against \$6.5 million for building program

## Bond passes with flying colors

by **Tim Fleischer**  
*Editor-in-Chief*

Salado voters overwhelmingly approved a \$6.5 million bond issue Sept. 27 with 716 voting in favor of issuing bonds for the construction of a new middle school and 78 voting against.

The 794 votes cast represents approximately 26 percent of the eligible voters residing within the school district.

A whopping 47 percent of registered voters voted in an earlier bond issue for construction of a high school, which failed 835 against and 164 for.

"I'm thrilled," said Salado ISD Superintendent Steven Ervin. "The voter turnout shows the community supports the education process in Salado. I'm also very happy that we're able to keep taxes low in Salado ISD."

Salado ISD officials learned early last week that the school district has been approved by the Texas Education Agency to receive \$71,755 annually during the life of the 25-year bond issue. The money is in the form

of state funds for building programs. State funds will total \$1.8 million during the life of the bond.

"This greatly reduces the impact on local taxes," Supt. Ervin said, adding that the impact on the tax rate may be 10¢ per \$100 valuation.

The bond issue calls for construction of a 60,000 sq. ft. middle school on the present school site. Of the \$6.5 million bond, \$5.5 million is budgeted for the new construction.

The remaining \$1 million will be spent on renovating the elementary school and high school: \$725,000 for the elementary school and \$275,000 for the high school.

The board will meet Oct. 7 with its architect, Claycomb & Associates, as well as with Southwest Securities, which will be issuing the bonds.

Work on drawing up the plans for construction of the new middle school will begin as the architect meets with teachers, administrators and community members to review needs for the school.

Overall plans call for the

middle school to feature a large cafeteria to be used by all three schools.

The dining area of 6,000 sq. ft. will handle a capacity of 400 students at a time, in addition to a 1,500 sq. ft. stage and approximately 2,300 sq. ft. for food preparation and service.

The present cafeteria at Thomas Arnold Elementary will be converted into an elementary school library, nurse's office and band hall.

Supt. Ervin said he does not expect renovation of the elementary cafeteria until construction of the new cafeteria is complete.

Other renovations, including work on the roofs at both the high school and elementary, may begin as early as November.

"The new roof will have to be put out for bids in October," Ervin said. "They should be back in November."

Bids for new construction may be sent out as early as December, Ervin said, with the board accepting bids in January or February and construction possibly beginning in the spring of 1998.



(photo by Marilyn Fleischer)

Christmas tree decorating ideas will abound during Christmas in October 10-11 in the Salado Civic Center.

## Christmas in October 10-11 at Salado Civic Center

The theme for this year's Christmas in October is "I'll be Home for Christmas." It will be open 9 a.m.-4 p.m. Oct. 10-11 with admission at the door of \$5 for adults and \$2 for children ages 2-11.

Over 35 displays will be shown in the Civic Center, while the Bake Shop and Grandma's Pantry will be in the Historical Society log cabins on the grounds of the Civic Center.

Christmas ornaments will be on sale in the Historical Society room in the civic center. Potpourri and baked goods from ladies throughout the village will also be on sale during Christmas in October.

"The Salado Historical Society so graciously offered the cabins this year, which should

offer a quaint and cozy feeling," said LaFon Ditzler, chairman of the Christmas in October event.

There will be carolers and Santa Claus in the Gazebo 11 a.m.-1 p.m. Oct. 11.

Everyone is asked to please bake for the annual event. Proceeds from Christmas in October will go to projects throughout the village, including the Salado Volunteer Fire Department and scholarships for Salado High Students.

Baked Goods can be delivered to the Civic Center Oct. 9. Containers for the baked goods may be picked up from the Civic Center next week.

For more information about Christmas in October, please call LaFon Ditzler at 947-5792 or the Salado Chamber of Commerce at 947-5040.

## Renown anthropologist will speak to Institute Oct. 5

Renown cultural anthropologist Richard Shweder will open the fall seminar and lecture series of the Institute for the Humanities at Salado, Oct. 4-5. The theme for the fall series is "The Person and the Collective."

Schweder's seminar, titled "Rediscovering Myself in an Orthodox Hindu Temple Town," will be held 10 a.m.-3:30 p.m. Oct. 4 at Allen Hall. His lecture, scheduled 4 p.m. Oct. 5 at Mill Creek Country

Club, is titled "Varieties of Moral Intelligence: Autonomy, Community, Divinity." The lecture will be followed by an hour of discussion and a buffet dinner.

Shweder, professor of human development and psychology at the University of Chicago, has published numerous papers, reviews, and books in the areas of psychological anthropology and cross-cultural studies.

See Institute, Page 4A



Cultural anthropologist Richard Shweder will discuss Varieties of Moral Intelligence at the Institute for the Humanities at Salado Oct. 5.

## Salado Family Festival in Pace Park Oct. 4 fun for all ages

The Salado Family Festival will be held in Pace Park 11 a.m.-4 p.m. Oct. 4, sponsored by the Salado Chamber of Commerce.

In the two years that the Chamber of Commerce has sponsored the event, it has donated over \$18,000 to the Salado Youth Association.

The Family Festival would

not be complete without the dunking booth, which will feature familiar faces from Salado ISD beginning with Superintendent Steve Ervin at 11 a.m., followed by Elementary Principal Rod Stockstill. Coaches and teachers will also be dunked this weekend.

Kids will enjoy the Moon Walk, as well as a sandbox

treasure hunt provided by Lone Star Grading and Paving.

Kids games (open to adults as well) will include egg toss, sack race, balloon race, orange relay and three legged race.

Salado Pottery will again sponsor the Kids' Art area, along the banks of Salado Creek. The Salado Village Artists will come to paint faces for

the kids.

There will be a soccer speed kick, a baseball pitching area and basketball goals for free throws.

The tug-of-war will pit teams against each other for bragging rights of having the most "pull" in Salado.

The Salado Lions Club will again serve hot dogs and pop-

corn to folks gathered for the day. There is no charge for the refreshments but a collection jar will benefit the SYA.

The Salado Rotary will serve snow cones and soda, which will be provided by Brookshire Brothers.

See Festival, Page 14A

# FORUM

An Open Exchange of Ideas



**CAPITOL COMMENT**

U.S. SENATOR  
**KAY BAILEY HUTCHISON**



## PRIORITIES

The Clinton administration is going to have to decide which is more important: stopping the flow of illegal drugs across the Mexican border into this country, or making the border more hospitable for nocturnal ocelots.

Down in Brownsville, the U.S. Fish and Wildlife Service has drawn a bead on the Immigration and Naturalization Service. As part of Operation Rio Grande, the Border Patrol has increased its manpower, added equipment and installed some two dozen lights along the banks of the Rio Grande to foil nighttime sneaking activities by drug smugglers and illegal aliens.

But these lights, Fish and Wildlife officials allege, disturb two large species of cat, the nocturnal ocelot and the jaguarundi. Brownsville INS sector chief Ernesto Castillo says the lights are an essential element of the Operation Rio Grande strategy, protecting both Border Patrol agents and thwarting drug traffickers.

Mexico is the source of between 20 per cent and 30 per cent of the heroin and 70 per cent of the marijuana shipped into the United States. It is the transit point for between 50 per cent and 70 per cent of the cocaine sold in the United States. The use of illicit drugs among eighth-graders has risen 150 percent in the last five years. Heroin addiction is climbing and crack cocaine remains an epidemic in America's urban centers.

As valid as it is to be concerned about endangered animals, I am even more concerned about an endangered generation of children in America.

The federal government has all but lost control of the 1,200-mile border between Texas and Mexico. One of Mexico's largest drug cartels operates across the border from Brownsville. Texas farmers and ranchers are being terrorized on a daily basis by drug thugs who operate with impunity in that area. And the McAllen Border Patrol Sector, which includes Brownsville, now exceeds San Diego in the number of illegal aliens crossing the border.

On August 25 the INS stepped into that breach — lights and all — with its Operation Rio Grande. Congress has few higher priorities among its legislative activities than to provide the resources to address this problem, and Operation Rio Grande is part of the Clinton administration's response to our concerns.

I oppose any attempt to diminish the impact of Operation Rio Grande, or any other effort to secure the Texas-Mexico border. Not one light should be turned off.

The administration should rein in Fish and Wildlife and instruct it to work with the Border Patrol to resolve this matter in a way that does not impede law enforcement efforts. The overriding issue here is the well-being of our children and our nation as a whole.

Kindly intentions toward wildlife notwithstanding, that must be our first priority. 9.19.97



Containers of water are excellent for storing heat in a solar greenhouse. Start with one cubic foot of water for each square foot of greenhouse.

## SALADO Village Voice

Member Texas Community Newspaper Association  
Published every Wednesday

**Location:** 213 Mill Creek Dr. #125 (Salado Plaza)  
**Mail:** P.O. Box 587, Salado, TX 76571  
**Phone:** 254/947-5321 **FAX:** (254) 947-9479  
**Open** 10am-5pm Mon. & Wed.-Fri.  
**Closed** Tues & weekends  
**Deadlines:** 5 p.m. Fridays

**Editorial policies:** Opinions on the editorial pages are those of the writer, not necessarily the owners or employees of the *Salado Village Voice*. All letters to the editor should be signed and have a phone number and address for verification. The editor reserves the right to reject and/or edit any letter written to him. Letters should address issues, not personalities and should be concise and constructive in approach.

**Photo policy:** Photographs submitted to the newspaper will be held at the office for 30 days after printing. After that, they will be discarded.

### Salado Village Voice Staff

Tim Fleischer, Editor-in-Chief  
Marilyn Fleischer, Managing Editor  
Ken Clapp, Political Commentary  
John Eubanks, Writer/Photographer



## Overwhelming approval of \$6.5 million school bond triggers \$1.79 million state grant

Congratulations are certainly in order for all who had a hand in last Saturday's winning school bond election that will provide the needed classroom space for our growing younger generation.

The school board, administration and volunteer groups who worked diligently to provide information on a timely basis as well as district voters, who turned out in record numbers to give their "stamp of approval" are all to be commended for a job "well done".

**Adding to the victory is the exciting news from the Texas Education Agency announcing they had approved a 25 year grant to the school district in the amount of \$1,793,875.00, that will be applied to the repayment schedule of the \$6.5 million bond issue.**

Starting next year, the amount set aside in the school budget to retire the newly approved bonded indebtedness will be reduced by \$71,755.00 from the TEA grant. This in turn will allow Salado school officials to lower the tax needed to retire the new construction debt from 14 cents to possibly less than 10 cents per

### Off the Record

by Ken Clapp



hundred dollar evaluation of property.

This is great news from the State and certainly "icing on the cake" following last week's overwhelming victory for the school children in the Salado ISD.

### REPUBLICANS SEEKING PERSONA

It is becoming more and more apparent that within the Republican Party there are strong "liberal" and "conservative" factions emerging that could be either a blessing or a curse, depending on how the two philosophies are handled.

Conservative writers for "The Weekly Standard," often called the Republican Party's bible, who are in support of what is termed "Rockefeller Republicanism," (the "big government" wing of the Grand Old Party), are being challenged by zealotites including syndicated columnist Robert Novak, who recently told a group of graduating se-

niors: "Never trust the government!"

The liberals, if that is a proper appellation for anyone associated with the GOP, hold up such party stalwarts as Teddy Roosevelt, Alexander Hamilton and Henry Clay as historical conservatives.

Unlike many of today's righteous-rightists, the "left leaning conservatives" have a strong belief in government's role in regulation and social justice and have developed a large following among Republicans.

These "centrists" are regularly blasted by hard-line leaders in the House including Majority Leader Dick Armey, Whip Tom DeLay, Ways and Means Chairman Bill Archer and the ever faithful far right fielder, Senator Phil Gramm. These guys are all Texas products, once again proving the direction the State has been headed politically since the mid '70s.

These holders of the holy grail of conservative thought all cite Thomas Jefferson as the only correct example of how to manage through reducing the power of the legislative, executive and judicial branches of our government.

Jefferson, who noted in 1787 of the "degeneracy of government and the tyranny of legislatures."

What is interesting here is that Repubs have always pointed to Democrats as a perfect example of a fouled-up political party, rife with all sorts of precepts and Rubrics, from middle of the road to way out yonder past liberal and approaching the nirvana of Jacobinism which is just around the corner from extreme anarchy, at the intersection of Welfare Road and Fabian's Socialist Street!

Apparently within every major political party there are

## ABWA Style Show Oct. 4 at Civic Center

The Chisholm Trail Chapter American Business Women Association has tickets available to its Oct. 4 Style Show. Tickets are \$10 per person and are available at the Salado Chamber of Commerce, Christy's of Salado, Hair Designs, Robertson's Hams, Stagecoach Inn and The Store at Old Town Salado, as well as from members of the local ABWA chapter.

The Style Show, scheduled to start at 11 a.m., will feature fashions from Christy's of Salado, located at Main Street and N. Pace Park Rd., and The Store at Old Town Salado, located across from the Salado Civic Center on Main Street.

There will be door prizes, donated by various shops in Salado, as well as a raffle for additional prizes. Hurry to get your tickets before space runs out.

# School board president thanks community

**To the Editor:**

On behalf of the other school trustees and the Salado School District, I want to thank Salado residents for their support in making the school bond election a success. We especially appreciate all the hard work of the Bond Election Advisory Committee—particularly the co-chairs, Jean Tarbutton and Barbara Pipes. It would not have been possible to educate the community about the district's needs and

generate support for the bond without the Committee's dedication and help.

We'd also like to thank the many other "unofficial" members — those of you in the community who donated money, talked to your friends, put-up posters and signs, and generally supported the bond effort. It couldn't have been done without you, either.

And finally, we'd like to thank the voters who took the

time to learn about the schools' needs and then to vote. We are indeed fortunate in this community to have such interested, involved citizens who understand the importance of supporting our schools.

We are excited about what this means for our district and our community. Thank you for making it happen.

Sincerely,  
Sara Mackie, President  
SISD Board of Trustees

# Record

FROM Page 2A

now differing articles of faith that range all over the playing field -from right to left. This is probably a good thing since it precludes having a major political party with no internal dissent or debate thus leaving members standing uniformly out on the fringe spouting a nonsensical one-way-only view.

Having a contest within a political organization between tenants, principles and beliefs keeps things on an even keel and prevents jackbooted take-overs as has been seen in every nation where tyranny arises from the ashes of a non-dissenting and thus weakened democracy. Germany in the 1930's immediately comes to mind.

We have examples today of both right and left wing nuts, within both major parties, who regularly blast anyone who

disagrees with the traditional party line.

The only exception being the Libertarian Party - led by Ron Paul of Surfside, Texas. These peculiar kooks just don't believe in government of any type, size, shape or form. Sort of a "If it feels good - do it" type management of the affairs of the nation, with the last one out of Washington required to turn out the lights!

**CORRECTION**

One of this column's loyal readers brought our attention to a slip-up in last week's offering in which we noted the speed with which Phil Gramm and Jessie Jackson could almost magically appear before any TV camera within hailing distance.

Bob McKinney, a recent resident of the Village and neophyte member of the famous

"Do-No-Gooder" society, noted that Gramm was properly titled a "GOPer" in the piece, but Jackson had no such political nomenclature. He wondered why!

Response is easy. We screwed up and failed to mention the Rev's affiliation. He is, of course, officially a Democrat even though this causes heartburn and nausea among most moderate Demos.

Actually Jessie is at the extreme left of the Democratic Party's convoluted mix of ideas. Fact is he is way "Over The Rainbow" (no pun intended) when it comes down to explaining his political belief system.

But, Bob is right. Old Jessie is a Demo and there is nothing the party can do about it except not stand in the way when he sights a TV camera or live microphone!

That's -30-

## Grace Baptist Church invites you to our third anniversary celebration Sunday, October 5, 1997

Sunday school 9:45 a.m.

Sunday worship 11 a.m.,

followed by Dinner on the Grounds

Concert with Greg Berry begins at 6 p.m.

Please come for all or any part of our celebration

2 mi. West of I-35 on 1670/2484

"Greg is an outstanding songwriter, musician and singer who has the skill to captivate an audience while he performs or motivates them to sing praise choruses. His tremendous heart for ministry and humble spirit is evident as soon as he begins to sing. He leads music in our college ministry and is a major reason for its success. Yet, his musical style relates well to youth and adults, also." John Walters, Minister to Singles, Hyde Park Baptist Church, Austin, TX



"TALENTED, ENGAGING, MOTIVATING, INSPIRING. These words only begin to describe the gift Greg Berry brings to the body of Christ. Greg's talent is much more than music; much more than songwriting; much more than singing. His gift is unquenchable joy. Take a moment and be refreshed by this unique minister of the gospel of grace." Rob Harrell, Pastor, First Evangelical Free Church, Austin, TX

"Having personally heard Greg sing and play several times, to both small and large audiences, I am convinced that he has been "called" and "equipped" by the Lord to share God's truth and encouragement with today's youth. I promise, if you open any doors to Greg's music and ministry, you will not only be fully pleased, but your people will want him to return again ASAP!" Dennis Connor, Texas State Director, Fellowship of Christian Athletes

### Changing Jobs or Retiring?

Call A.G. Edwards for alternatives on how you can receive and manage your distribution from your company's retirement plan.

**A.G. Edwards**  
INVESTMENTS SINCE 1887

3407 S. 31st St., Suite 120  
Temple, TX 76502-1902

Member SIPC  
1996 A.G. Edwards & Sons, Inc.



Mike Miller  
773-1504

7884.02b  
DTR-130-1097

## LASTOVICA

Fine Jewelers, Inc.

"Known for Service"

Prompt In-Store Jewelry Repairs

Diamond Sales Custom Casting Diamond Appraisal  
Watch Repair Diamond Setting Jewelry Repair

New Location: 1202 S. 31st St. & Ave. L • Temple  
773-5772



## Peterek's Country Meats

& Czech Country Sausage

ELMERKING ROAD • P.O. Box 1353  
BELTON, TEXAS 76513

(254) 939-8555 • (800) 965-8555

PLANTHOURS: Wed., Thurs., Fri. 8am-6pm  
Sat 8am-3pm Closed Sun., Mon., Tues.

Barbecue Catering

Prime Rib • Choice Beef • Czech Sausage

CHOICE BEEF HALVES & QUARTERS

• DEER PROCESSING • BARBECUE CATERING

• REAL BEEF JERKY • WE CATER ANYTIME, ANYWHERE



## Compass Bank

Where There's Compass, There's A Way.

LOBBY

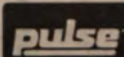
Mon-Thurs 9 am- 3 pm, Fri. 9 am-6 pm

DRIVE-THRU

Mon-Fri 7:30 am-6 pm

700 N. Main St. Salado

(254) 947-5051



24 Hours A Day

XPRESS BANKING 933-4200

All Compass Banks are members FDIC

## Rick's

## Tire Service

111 S. Hwy Blvd. Belton

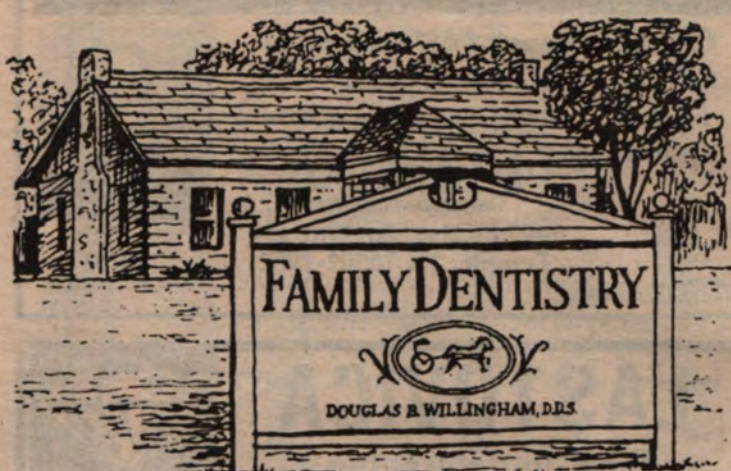
(next to Bobby's Burgers)

(254) 939-7578

- New/Used Tires
- 24-Hr. Road Service
- FREE Road Hazard on all new Tires
- State Inspections

Pager (817) 770-5907 Ask for Mike

Sonny Whiteley Owner



Main St. & Thomas Arnold, Salado • By Appointment, 947-5242

tural human development and culture theory. His 1991 book, *Thinking Through Cultures: Expeditions in Cultural Psychology*, has received wide acclaim.

Schweder has undertaken extensive research in a traditional Hindu community in Northern India. His recent work there on the development of conscience, guilt and morality has been supported by the National Institute of Child Health and Human Development. Schweder's current in-

terests also include the comparative study of explanations of emotions and illness.

Future speakers in the series include Chungliang Al Huang, founder and president of the Living Tao Foundation in Urbana, Illinois and an authority on East/West cultural synthesis (Oct. 25-26); Huston Smith, the Thomas J. Watson Professor of Religion Emeritus, Syracuse University, and author of *The World's Reli-*

*gions*, the most widely-used textbook for courses in comparative study of religion (Nov. 1-2); and Richard Wilbur, Pulitzer-prize winning poet and translator, teacher, Broadway lyricist, and author of children's books (Nov. 15-16).

The Institute is a nonprofit educational institution dedicated to serving the general public with lifelong learning opportunities. The fall series is supported in part by the Texas Council for the Humanities, the Potts and Sibley Foundation, RGK Foundation, Rockwell Fund, Inc., and the Trull Foundation.

For additional information, contact the Institute for the Humanities at Salado at 947-5729.

**Women's Chorale needs your voice**

**To the Editor:**

This is to you ladies. Can you sing? The SALADO WOMEN'S CHORALE needs you. You don't have to have a solo voice, just read music and be able to sing on key.

For three years, we have been entertaining enthusiastic audiences. But I think we in the group have had as much or more fun than the audiences.

We are so fortunate to have Katherine Wende, an extremely well-trained and capable director who has an opera-trained voice. But after her husband's oil company transferred them to Jakarta, Indonesia, you know how much opera she sang. So, although they were transferred all over Asia and Europe, she has always taught voice and had a chorale.

We are also so lucky to have Marge Kirkman, our concert quality accompanist, who has won awards in Texas and other states. She has delighted Salado with her playing.

So if you like to sing, please come and join us. We rehearse at the Civic Center every Tuesday at 5 p.m.

Mary Hill

*Doug Spiller*  
*Photography*



**Royal St. Commons**  
Salado, Texas  
254-947-8585

Weddings • Bridal • Children • Family • Boudoir

**STREETS OF SALADO** Catalog Sales



We specialize in offering unique products with a western / southwestern flare... Gift items, holiday & home decorative items, rustic picture frames, clothes, jewelry, handmade metal-art lamps and hat racks and much, much more.

To receive a copy of our newest catalog, come by and see us or give us a call.

213 Mill Creek Drive Suite #130  
(Next to Brookshire Brothers market)

Locally: (254) 947-1313  
Toll Free: 1-888-4SALADO

Salado's  
Christmas In October  
*"I'll Be Home For Christmas"*

October 10-11, 1997  
9 a.m. to 4 p.m.  
Salado Civic Center

Tickets at the door  
Adults \$5.00 Children 2-11 \$2.00

Light Refreshments

Christmas Table Settings  
Decorated Christmas Trees  
Baked Goods  
Grandma's Pantry  
Salado Artists' Bazaar

*Sponsored by The Salado Chamber of Commerce Ladies Auxiliary*



Jarrell Farm Supply Salado Farm Supply

101 CR 307, Jarrell (512) 746-2414 (local call)

15741 S. I-35, Salado (next to Salado Texaco) (254) 947-3613

**You will be satisfied with our products & service!**





Complete line of liquid & dry feed, liquid & dry fertilizer, seed, custom milling & grinding, bulk & bag delivery

**SEED OATS DEER CORN**  
**LAWN & GARDEN**

- Lawn fertilizer 15-5-10 and 13-13-13
- Soil conditioner • Cocoa shell, cypress & pine bark mulch
- Bulk garden seed • Diazinon • Water softener pellets
- Flea dip & shampoo

**DOES YOUR AUTO INSURANCE NEED A TUNE-UP?**

Come in for a *Farmers Friendly Review* and find out if you're eligible for our discounts. Some items you may qualify for include car pooling, multi-car ownership and nonsmoking\*. Selecting higher deductibles may also save you money.

Our Review also checks your house or apartment and life insurance policies to see if there are ways to save, or holes in your coverage.

Call now for a *Farmers Friendly Review*. The tune-up is absolutely free. \*Some discounts may not be available in your state.

**John Hall Insurance Agency**  
Salado Civic Square,  
(Main St. & Van Bibber, next to Salado Civic Center)  
947-3151 Fax 947-3772  
Out of town, please call toll-free 1-800-497-8087



America can depend on Farmers

# Youth Fair Boosters evening slated Oct. 11 to raise funds for 4-H, FFA, FHA kids

The Salado Youth Fair Boosters will hold its annual fund-raiser of the year at 6 p.m. Oct. 11 at Jack's Barn.

One hundred percent of all proceeds from all Salado Youth Fair Boosters' fund-raisers go directly to benefit every Salado youth that enters a project in the Bell County Youth Fair.

The theme of this year's ticket auction is "Remember: What It's All About."

Displays will remind all attendees that Salado youth need our support to encourage their exuberance for their continued projects and reward the efforts of each fair project.

Each child will receive a share of the proceeds, whether their projects consist of raising steers, heifers, goats, pigs, lambs, training horses, welding barbecue pits, porch swings, baking cookies or even baking cakes that only a grandmother could love.

Entries from all members of FFA, 4-H and FHA are qualified to participate.

All parents or other persons interested in supporting and making sure that the youth of Salado have the encouragement vital to the continued growth of the children are invited to attend the next meet-

ing of the Fair Boosters.

Call an officer for meeting details or to find out how to get tickets.

Tickets are limited to only 200 and are going fast. Grand prize is a \$5,000 travel certificate, followed by \$2,500 and \$500 travel certificates.

Excellent and exciting consolation prizes will be awarded through 10th place.

For tickets, contact Judy Houston (947-8370), Glenda Hill (947-8548), Jackie Burson (947-9186) and Sue Ricks (947-0064).

## Reduced rate mammograms offered in Oct.

Reduced rate mammograms are available through Scott & White and the American Cancer Society for women who have no health insurance from 8 a.m. to noon on three Saturdays in October: Oct. 4, Oct. 11 and Oct. 18.

Each woman will be given a free breast examination from a Scott & White health provider. The breast exam and mammogram will take about 30 to 45 minutes.

Cost of the reduced-rate mammogram at Scott & White is \$60, which is below the standard cost.

Appointments are necessary. Women must call the American Cancer Society offices at (800) 227-2345.

**THE PUMPKINS ARE COMING**  
**OCTOBER 3<sup>rd</sup>**  
*Buy fall pumpkins under the big tree at*  
**BAYBERRY'S ON MAIN**  
**ALSO...**  
*Kids' Costume Contest*  
*Sunday, Oct 26*  
*2:30 pm Kids to 10 yrs*  
*Prizes for winners*  
**680 N. MAIN - SALADO**



## Harold's Piano Sales & Service

213 Mill Creek Dr. Suite #190

Salado Plaza

Salado, TX 76571

254/947-4677



Best Selection of Pianos in Central Texas  
We restore old pianos. Call for estimate



## Deanna's Floral Creations

213 Mill Creek Dr., #160

(Next to IGA Village Foods)

Salado, TX 76571

254-947-0222 • 1-800-947-0502

Credit Cards Accepted • Telefloral Wire Service  
Delivery to Salado, Bartlett, Jarrell, Belton and Temple

## BoTangles

Styling Salon

Splash out summer  
shine for the season.

EQ splash for \$25

213 Mill Creek Dr., Ste. #165 254/947-4747

Schanna Culp  
Stylist/Nail Tech

Iris Dodge  
Owner/Stylist



## Markie McTravel

A Full Service Travel Agency

213 Mill Creek Dr., Suite #110

(254) 947-1168

Open 10-4:30 Mon-Fri

Joan Schrock Sheri Macchi

# THANK YOU!!

## SALADO ISD SUPPORTERS



## FOR PASSING THE BOND

(Pol. Ad paid for by the Salado Bond Advisory Committee. Tom Schatte, Treasurer, PO Box 444, Salado TX 76571)

## Village Pharmacy

of Salado

Mon-Fri 8:30am-6pm, Sat 9am-2pm

213 Mill Creek Dr., Ste. 155

947-3185 FAX 947-3187

## Salado Medical Clinic Ramiro A. Peña, M.D., P.A.

Diplomate American Board of Surgery  
Fellow of American College of Surgeons  
Family Practice and Primary Care

Medicare Medicaid  
United Health Care  
Ethix Southwest  
PHCS

213 Mill Creek Dr., Suite 180

Salado, TX 76571

(254) 947-9044 1-800-947-9044

Se Habla Español



# Salado Lions working on next phone book

**BUNDLE OF JOY!**

- Ⓞ Elegant gifts
- Ⓞ Irresistible children's wear
- Ⓞ Unique cribs
- Ⓞ Beautiful custom bedding
- Ⓞ Maternity fashions

Creekside Center Main St. 947-0609

**Cowboy's Barbecue Restaurant, LLC**

Owned & operated by Raymond & Cindy McKee  
 Open 10:30 a.m. - 'til 8 p.m.  
 Sandwiches • Dinners • By the Pound  
 Carry Out Orders We Cater  
 Family Pack (feeds 4) \$11<sup>95</sup>  
**947-5700**  
 IH-35, Exit 285 Salado, Texas

## Attend the Weekly Church Service of Your Choice

**FIRST BAPTIST CHURCH OF SALADO**  
 Main St. at the Creek  
 947-5465

**SUNDAY**  
 \*9:40 a.m. Bible Study  
 8:30 & 10:50 a.m. Worship  
 5:30 p.m. Evening Worship  
 \*6:30 p.m. Adult Study Courses

**WEDNESDAY**  
 \*6:15 p.m. Prayer & Praise  
 \*Age appropriate activities & classes for pre-schoolers, children & youth  
 Rev. Brian Dunks, Pastor



**SALADO UNITED METHODIST CHURCH**

**SCHEDULE**

Early Service 9 a.m.  
 Sunday School 10 a.m.  
 Worship Service 11 a.m.  
 Nursery available:  
 Church & Sunday School.  
 Information 254/947-5482

**St. Stephen Catholic Church**

7 p.m. Wed. Grades 9-12 Religious Education Class  
 5:30 p.m. Sat. Eucharist  
 9:30 a.m. Sun. K-8th Grade Religious Education Class  
 11 a.m. Sun. Mass

**601 FM 2268**  
 (Holland Rd.)  
 Deacon John Petter  
**947-8037**

**Salado Church of Christ**

**Sunday**

Bible Class 9 a.m.  
 Worship and Children's Bible 10 a.m.  
 Evening Worship 6 p.m.

**Wednesday**

Ladies Bible Class 10 a.m.  
 Bible Classes 7 p.m.  
 (All ages)  
 Dempsey Stripling, Minister  
 IH-35 at Blacksmith Rd.  
**947-5241**

**Grace Baptist Church**

John Warden Pastor  
 2mi. West of I-35 on 1670/2484

**Worship Schedule**

Sunday School 9:45 a.m.  
 Worship 11 a.m.  
 Bible Study 6 p.m.  
 Wednesday Praise & Prayer 7:00 p.m.

**Presbyterian Church of Salado**

10:00 a.m. Sundays at Allen Meeting Hall  
 Pace Park Drive behind The Inn at Salado  
 Billy P. Smith, Th.D.  
 Minister, Grace Presbytery  
 Presbyterian Church (U.S.A.)  
**254-947-8470 254-947-9935**

Lloyd Parks, president of the Salado Lions Club, has announced that the Lions have begun preparation for publishing the 1998-99 Salado Telephone Directory.

The Lions Club telephone directory is made available to Salado residents at no charge, and those involved say it could not be accomplished without the generous support of businesses and individuals. The 6x9-inch directory, which is published every two years, is popular because of its easy use.

Eldon Miller is first vice president for this project, with help from Don Owens, chairman, and Don Svadlenak, co-chairman.

There is also a committee of more than 39 Lions involved in white page verification and



(photo by John Eubanks)  
 Some of the members of the Salado Lions Club working on the next phone book are shown above with the past two phone books published as a fund-raising project by the local civic group.

updates, as well as yellow page display advertising.

### THE ILLUSTRATED BIBLE Jesus the Good Shepherd

"My sheep hear my voice, and I know them, and they follow me; and I give them eternal life, and they shall never perish, and no one shall snatch them out of my hand."  
 — John 10: 27-28



There was great division among the people as to whether Jesus was a demon or a savior, and they were always asking for more proofs of His identity. But Jesus knew that no matter what His answer, there would always be doubters. His leadership must come about through faith, and like a good shepherd, He knew His followers and the trust they placed in Him. Just as the shepherd brought his flock to good pasture and clean water, so too did Jesus offer those who believed in Him the sustenance for their souls and the faith to follow away from the paths of harm. What more can one ask of a good shepherd?

Proceeds from the directory assist in many of the club's community projects, including the Salado Youth Association, Salado Volunteer Fire Department, Salado Public Library, Lions Quest program, Texas Lions Camp in Kerrville, Lions Eye Bank, scholarships, and other community projects. Salado Lions Club projects are carefully selected for best service to Salado and Lionism, officials say.

They encourage residents and businesses new to Salado within the last two years to contact any Lion or Don Owens for inclusion in the 1998-99 edition of the Salado Lions Club.

Mail the following form to Salado Lions Club, P.O. Box 372, Salado, TX 76571.

Name \_\_\_\_\_  
 Address \_\_\_\_\_  
 Phone # \_\_\_\_\_

**Making Room for Christmas SALE**  
 October 1-8  
 OPEN: MON-SAT 9:30AM-5:30 PM

*Greater Gifts*  
**Christmas Books & Gifts**  
 210 E. Central • (254) 939-7962 • Downtown Belton

Selected Sterling Silver Jewelry <b>50% Off</b>	Bird-Houses & Fountains <b>50% Off</b>	Birth-stone Babies <b>\$400</b> Reg. \$5
All Framed Art <b>30% Off</b>	Brass Frames <b>\$500</b> 5X7 - 8X10	Bean Bag Floppies <b>Buy 2 Get 1 FREE</b>

**Clearance 50% to 80% off** (use back door parking)  
 Enter on 1st Street or Penelope by L&R Market

**Thank you Salado** for your generous support & kindness. Especially Bruce & Tina Judy Reynolds at Markie McTravel

**FSB First State Bank**

**Lobby Hours:**  
 Monday -Thursday 9 a.m.-3p.m.  
 Friday 9 a.m.-4 p.m.

**Drive-in:**  
 Monday - Thursday 7:30 a.m.-4 p.m.  
 Friday 7:30 a.m.-6 p.m.  
**SATURDAY 9 a.m.-12 noon**

"Where full banking services are traditional"  
 Main St. at Thomas Arnold Rd. Salado  
**254/947-5852 Member FDIC**

### Salado FFA to meet Oct. 6 in SHS gym

The Salado FFA will meet at 6:30 p.m. Oct. 6 in the Salado High gym.

All members and guests are encouraged to dress up. This is the last meeting that dues will be \$6 for junior members and \$12 for senior members.

Starting Oct. 7, dues will be raised to \$12 for junior members and \$18 for senior members.

### Spanish Club elects officers

The Salado High Spanish Club elected officers Sept. 15 for the 1997-98 school year.

They are Lisa Karnes, president; Troy Smith, vice president; Lindsay Owen, secretary; and Katie Punchard, reporter.

On Oct. 1, the Spanish Club will begin its Spirit Link campaign to raise money for the Spanish Club scholarship that is given to a graduating senior who is a member of the club.

Last year's recipients, McKenzie Brown and Alisa Allen, received \$500 each to be used toward college tuition.

If a member should come to a Saladoan's door, each link is 25 cents and will be used to construct a Spirit Chain for the Rogers football game.

### SHS volleyball team defeats Bremond, to face Moody

The Salado High volleyball team defeated Class A Bremond 15-3, 15-8 at home Sept. 23.

Results from a Sept. 30 home game with Lexington were not available by press time for this issue.

The Lady Eagles' next game is Oct. 4 at Moody, with the freshmen starting things at 11 a.m. It is the final non-district match before District 26-2A play begins Oct. 7 at home against Rogers.

The win over Bremond gave Salado a record of 4-12. "We weren't as sharp as I had hoped we would be," Coach John Black said. "This was a match I wanted to work on mental toughness -- closing out matches."

Black said the team served

### SHS cross country runners open season in San Antonio

The Salado High cross country team opened the season Sept. 26 at a meet in San Antonio.

New coach Bob Liles said the meet featured 250 schools from several divisions. Salado competed in the small-school varsity division.

well, and he singled out Kathy Matthews and Sommer Wilson for their serving.

#### JUNIOR VARSITY

The JV won 15-6, 15-1 to even its record at 4-4. "We didn't let the ball hit the ground," Black said. "All the kids were in good position."

Lauren Quirk and Sarah Buchanan had good hitting games. Shelley Dillon did a good job of setting the ball.

#### FRESHMEN

The frosh spikers beat Bremond 15-7, 15-7. It was their second straight win and evened their record at 2-2.

Coach Black said it was a good team effort and said Micki Rosanky had the best serving game of the match.

"We didn't let the ball hit the floor and hit most things that came back to us," he said.

Liles said Tracy Crane had the best finish among the six Salado runners, finishing 100th out of 250 girls.

The other five SHS runners were Brad Bolick and Vicente Friare among the boys, and Niki Jackson, Sarah Buchanan and Hope Buchanan among the girls.

223 North Wall  
Belton, Texas 76513

254-939-3227

### STEVE'S SMALL ENGINES LAWN MOWER REPAIR

"Specializing in bent crankshafts and recycling."

We buy aluminum cans! We also take newspapers, plastic, and other recycling items for free.  
Call for more information.



### OF KILLEEN

Free Tire Rotation and Brake Inspection

With This Ad - Passenger Cars and 1/2 Ton Trucks Only

BY APPOINTMENT ONLY

2800 E. Bus. Hwy 190

Call James or Todd

Killeen, TX

254-690-5800

NOT GOOD WITH ANY OTHER SPECIALS

### LONE STAR GRADING & MATERIALS

#### House Pads & Hauling

Specializing In:

Top Quality House Pads,  
Lot Preparation  
Gravel Driveways & Roads



Your Outlet For:

Sandy Loam Topsoil  
All types Sand,  
Gravel & Fill Materials

All Types Dirt Work • Top Soil Installation

Evening & Weekend Delivery Available

ALL WORK GUARANTEED!

Billy Helm (254) 947-0149

(254) 933-7902



# OPEN NOW

Milton Kirchmeier's  
AUTO EXCELLENCE

# FAST LUBE CENTER

\*\*\*\*NEW HOURS OPEN UNTIL 9:00 PM THUR.\*\*\*\*



\$24.95 Full Service  
\$16.95 Oil & Filter  
5-W30 / 10-W30 / 15-W40

( up to 5 qts)

Bottle Oil \$2.00 Extra  
Diesels/Merc/BMW Extra  
Synthetic Oil \$20.00 Extra  
Plus Tax & Disposal Fee

\* Other Oils Available with advanced request \*

1453 N. Stagecoach rd. Salado, TX 76571

East Side of IH-35, Exit 285

(254) 947-5042 Fax (254) 947-0597

VISA / MASTERCARD / DISCOVER



\* BOTTLE OIL  
Motorcraft 10-W30  
Rotella 15-W40  
Delo 15-W40  
Castrol 20-W50

#### HOURS

8AM - 6PM MON-WED

8AM - 9PM THUR

8AM - 5PM FRI

\$3.00 OFF

COUPON

GOOD FOR YOUR NEXT OIL CHANGE

VALID THRU 31 DEC 1997

# Under varsity teams take 2 games from Liberty Hill



Edward Chavez (right) goes for a loose ball in the eighth-grade's win over Thorndale. (photo by John Eubanks)

The Salado junior varsity football team defeated Thorndale's JV Sept. 25 at home to raise its record to 2-1-1.

Rory Oldham scored on a four-yard run in the second quarter to give the Eagles a 6-0 halftime lead. The touchdown was set up by a Grant Schillings interception late in the first half.

Oldham scored the final touchdown in the third quarter on a 14-yard run. Michael Schoepf kicked the extra point.

Offensive standouts were Oldham, Adam Wigley and Sail Ricks. Defensive standouts were Schillings, Matt Gunter and Bryan McKee.

### EIGHTH GRADE

The Salado eighth-graders defeated Thorndale 21-8 to remain unbeaten at 3-0.

Edward Chavez scored all three Salado touchdowns. He scored on a 20-yard run in the first quarter, a 16-yard run in the second quarter and a 10-yard run in the fourth quarter.

Jeremy Grimm kicked all three extra points. He and Chavez were singled out as the team's offensive standouts.

Defensive standouts were John Kirk, Dan Watson, David Matthews and Matt Ward.

### SEVENTH GRADE

The seventh-graders lost to Thorndale 13-0, after trailing 6-0 at halftime.

The big play offensively was a 20-yard reception by Roland Buckley. He caught it from quarterback Stephen Fewell, who was 3-for-4 passing.

Other offensive standouts were Lane Wolfe, who caught a pass, and Alex Torres. Defensive standouts were Isaac Beruman and Ross Cravens. Each was credited with five tackles.

**Tired of Paying too Much for Your Commercial or Real Estate Loan?**

Call Keith Maxwell about our Low Loan Rates!

(254) 554-4328



www.1stnb.com



Banking at Your Convenience!™

MOUNTAIN MARY'S  
**WESTERN CONNECTION**  
WILD WEST SHOW  
AND FALL ROUND-UP  
OCTOBER 11  
10AM-TILL LATE

SHOOTOUTS  
CHUCKWAGON  
COWBOY POET

TIN TYPE PHOTOS  
SLUCEBOX  
(PANNING FOR GOLD)  
COWBOY BAND



CLASSIC OLD WEST STYLES INC.



TRUNK SHOWING OF  
CLASSIC OLD WEST STYLE  
CLOTHING

SASPARILLA BAR OPEN WITH FLOATS ON TAP

**YA'LL COME**  
I-35, EXIT 285 SALADO

Farmers®  
*Auto Loans*  
It's about  
time.



Shopping auto loans have you at a loss? Farmers® Insurance gets you back where you belong with auto loans you can arrange at the same time you get new car insurance.

So call me today for an auto loan from Farmers Insurance.

Don A. Svadlenak  
102 Travis St. Holland  
657-2621

Farmers®  
*Auto Loans*

Offered through CITIBANK®



Gets you back where you belong.™

## Wild-West Savings

Cowboy's Barbecue Restaurant, LLC is celebrating 20 years of business here in Salado.

We are celebrating 20 years of business in Salado and would like to say Thank You to all Saladoans for the support you have given us over the years. Most items on our menu have been reduced in price, including Family Packs, By-the-Pound and Sandwiches. The quality's the same, but the prices are lower.

If you haven't tried Cowboy's, ask your neighbor about us. Call in order are welcome. We cater.

Family owned & operated by  
Raymond McKee & Cindy McKee

1300 W. Robertson Rd.  
Salado, Texas 76571  
254/947-5700

Killeen  
*True Value*  
Help is Just Around the Corner



Scott's  
**SUPER WINTERIZER**  
20-11-12  
**8.88**

Apply as your last feeding in fall for your best lawn ever. Covers 5,000 SF. 2205/65-0386 (2H)

We Also...  
• Cut Keys • Cut & Thread Pipe  
• Have Home Gap Delivery  
• Refill BBQ Grill Cylinders  
• Have Front Row Parking & Quick Check Out

KILLEEN PROPANE AND HARDWARE

3905 E. (Bus. 190) Vet. Mem. Blvd.  
1-800-622-2703

"A Real Hardware Store"



# 1997 Salado Junior Varsity Eagles

(front row, from left) James Butler, Head Trainer, Jonathan McHaney #61, Saul Fraire #70, Joe Califano #2, Chris Ray #10, Dale Lisenbe #71, Larry Whitt #42, Michael Gonzalez #32, Kelly Peckham #66, J.D. Glaeser #1, (middle row, from left) Michael Gunter #35, Brad Johnston #76, Tigger Day #80, Sam Daniel #11, Rory Oldham #25, Michael Schoepf #18, Kevin Keller #62, Matt Fleck #24, Bryan McKee #50, Grant Schilling #67, Brent Hansen #82, Adam Wigley #60, (top row, from left) Donny Pipes #30, Garlen Hennig #84, Matt Gunter #52, David Palmer #22, Robert Ellis #44, Chris Woolard #64, Brandon Keating #77, Derek Cravens #17, Jeremy Whitacre #89, #79 Scott Marley, Sail Ricks #63. Not shown is Seth Wilson #68.



THE HISTORIC  
**STAGECOACH INN**

We're "Pulling"  
For the Eagles

Superb Dining • Delightful Motel  
Salado, Texas 254-947-5111



Let's Win!!

## Salado Dairy Queen

Thomas Arnold Rd. & I-35 947-5406  
Open Daily and late on home games

Go Salado!!



**Centrovision**

Cable TV Service for Cental Texas

Serving Salado • Little River-Academy • Morgan's Point  
• Lake Belton • Moody • Rogers • Troy  
773-1163 8 E. Barton Ave. Temple

### Eagle Players of the Week

Offensive Player

Defensive Player



Paul Mashburn  
9-27-1 passing, 128 yards



John Woolard  
10 tackles

## Gary Bartlett Construction

Residential • Commercial  
(254) 947-5825  
North Main St. Salado

## SHS Football Schedule

Date	Opponent	Place	Time
9/5	Riesel	Away	27-26
9/12	Moody	Home	42-6
9/19	Liberty Hill	Away	7-13
9/26	Thorndale	Home	15-18
10/03	Rosebud-Lott	Home	8 p.m.
10/10	*Rogers	Away	7:30 p.m.
10/17	*Florence**	Home	7:30 p.m.
10/24	*Hutto	Away	7:30 p.m.
10/31	*Jarrell	Home	7:30 p.m.
11/7	*Holland	Away	7:30 p.m.

\* District Games \*\* Homecoming Game

## JV, Jr. High Football Schedule

Date	Opponent	Site	7th	8th	JV
9/4	Riesel	Home			14-14
9/11	Moody	Away		21-8	22-0
9/18	Liberty Hill	Home	0-8	32-0	22-30
9/25	Thorndale	Home	0-13	21-8	13-0
10/02	Rosebud-Lott	Away	5 p.m.	6 p.m.	7 p.m.
10/09	Rogers	Home	5 p.m.	6 p.m.	7 p.m.
10/16	Florence	Away	5 p.m.	6 p.m.	7 p.m.
10/23	Hutto	Home	5 p.m.	6 p.m.	7 p.m.
10/30	Jarrell	Away	5 p.m.	6 p.m.	7 p.m.
11/6	Holland	Home	5 p.m.	6 p.m.	7 p.m.

Head Football Coach Joe Mullins

The Eagles are  
"First" With Us!

### First State Bank



Main St. &  
Thomas Arnold  
947-5852  
Member FDIC

### Way to Go Salado Eagles



Compass Bank

"Where There's  
Compass,  
There's a Way."

Main St. Salado 947-5051  
Member FDIC

Salado's  
"Home Team"  
Backs  
The Eagles!!



Bill Bartlett

N. Main St. Salado 254/947-5050

### Backing the Eagles to Victory!



Rely on the Tiger

Open 24 Hours  
254-947-5660



Open 6a.m. - 10 p.m.  
254-947-8060 • Drive-thru

15 S. Stagecoach Rd.

# Eagles prepare for Rosebud-Lott after close loss to Thorndale

by John Eubanks

The Salado High Eagles lost to the Thorndale Bulldogs 18-15 at their place Sept. 26.

The Eagles' second-straight heartbreaking loss evened their season record at 2-2.

They will host Rosebud-Lott at 8 p.m. Oct. 3 in their final tuneup before the start of District 26-2A play Oct. 10 at Rogers.

Salado lost to a previously

winless Thorndale team, now 1-3, despite outgaining the Bulldogs in total yardage, 418-366.

"We just started off a little slow and made some mistakes," Coach Joe Mullins said. "We kind of regrouped in the second half and played a good game."

Salado trailed 18-7 at half-time before cutting the deficit to 18-15 with 8:59 left in the fourth quarter on an 11-yard

TD run by John McLaughlin and a two-point conversion by Taylor Hutton.

Hutton scored Salado's first touchdown with 3:45 left in the second quarter, while Josh Lee kicked the extra point. Lee missed two field goals, a 29-yarder in the third quarter that was ruled just wide, and a 43-yarder late in the game that would have tied the score.

"We had a chance to tie the score," Mullins said, "but, you

know, it should have never been that close."

Mullins gave credit to Thorndale for playing a good game and not making many mistakes. "That was the difference," he said. "But our kids played hard, and they fought back and had a chance to win."

Hutton carried the ball 23 times for 176 yards of Salado's 290 rushing yards.

Quarterback Paul Mashburn completed nine of 27 passes

for 128 yards and had one interception against Thorndale. He also rushed for 25 yards on five carries, and was named offensive player of the week.

Defensive player of the week was noseguard John Woolard, who had 10 tackles. Hutton added 12 tackles, and Chad Kiphart had two interceptions.

The Eagles, who lost to Rosebud-Lott last season 35-14 will be playing a Cougar team that suffered its first loss of the season Sept. 26 to Class 3A Groesbeck, 28-20.

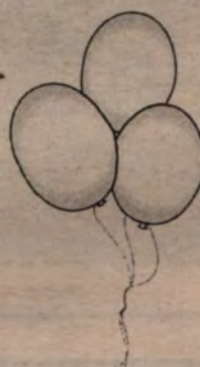
Despite losing to a Class 3A team for the first time in eight games, the Cougars dropped out of this week's Class 2A top 10 rankings. They had been ranked No. 6.

Rosebud-Lott quarterback Matt Luedke might not play, because of an ankle sprain. His backup, Kyle Parcus, threw for 139 yards and two touchdowns against Groesbeck, but suffered three interceptions.

See Eagles, Page 11A



## 3rd Annual Family Festival



Sponsored by the SALADO CHAMBER OF COMMERCE



### Saturday, October 4th

### 11 a m - 4 p m

### PACE PARK

RAIN DATE TO BE ANNOUNCED



Featuring

### DUCK RACE DOWN SALADO CREEK

TO BENEFIT THE SALADO YOUTH ASSOCIATION

\$25.00 Donation for each duck entered. 5 ducks for \$100, one dozen for \$200.

GRAND PRIZE - Choice of Ski Trip, Bahama Cruise, Disneyland or Hawaii.

SECOND PRIZE - Salado Shopping Spree, THIRD PRIZE - Framed Print by Ronnie Wells.

Prizes for Top Ten Ducks. Race begins at 3:30 pm

### EVENTS & FUN FOR ALL AGES

Tug-of-War  
Moon Walk  
Dunking Booth  
Soccer Kick, Baseball & Basketball Throw  
Kids Art Area  
Food & Drinks

Sponsored by Salado Pottery

Sponsored by Salado Lions Club, Rotary Club & Brookshire Brothers

Egg Toss  
Sack Race  
Balloon Race  
Face Painting  
Orange Relay  
Three Legged Race  
Sandbox Treasure Hunt



For more information please contact the Salado Chamber of Commerce at (254) 947-5040

**\$20 storage**  
**BELTON**  
**STOR-IT**  
**939-3338**

Complimentary Facial  
& Make Over at  
**Botangles**

Mary Kay has a skin care program designed for your skin type. All basic skin care products are non-comedogenic and clinically tested for skin irritancy and allergy. Most are fragrance-free and safe for sensitive skin. Call today to receive your complimentary facial.

**MARY KAY**  
FACE-TO-FACE BEAUTY ADVICE™

Anne Marie Harwell  
(254) 947-3159



Open 6a.m.-10 p.m.  
Drive-thru

- Breakfast Menu
- Kid's Meals
- Shakes
- Burger Meals

254-947-8060  
I-35, exit 284

# Saladoans win at Senior Games

Mildred Smith, Evelyn Lane, Margaret Tucker and Kay Short of Salado received gold medals in the 1997 Texas State Senior Games Sept. 27 in Temple.

They were among the 14-member line dance team R.S.V.P. (Retired and Senior Volunteer Program) Rhythm Rockers. It's the third win in three years for the group.

The team performed a boogie choreographed by Short, their leader and instructor, to the old Moon Mullins song, Cherokee Boogie.

Indian costumes were designed by Short and decorated by each member of the group. Each costume had 1,700 beads.

The gold medal was the first for Smith and Lane, new members of the team. It was the second gold medal for Tucker, who was part of the 1995 team.

It was the third win in as many years for Short, who won a silver medal in 1995 and a gold medal in 1996 with a dance that was choreographed by her.

Short has been a volunteer line dance instructor for two years. Classes are available through the senior activities (over 55) program at Harvest House on 11th Street in Temple.

Classes are held Monday and Wednesday at 1 p.m.



Team members are Mildred Smith, Evelyn Lane, Margaret Tucker and Kay Short.

## Trust Your Eye Care Needs to the Eye Center

The Eye Center provides a complete range of services including:

- No-stitch cataract surgery
- Complete eye exams
- Near-sightedness Correction Surgeries
- Contact lenses

773-7785

Mark F. Hollingsworth, M.D.  
Ophthalmologist  
Donald F. Semler, O.D.  
Contact Lens Specialist



1817 S.W. H.K. Dodgen Loop Temple

## Clawson Disposal Service



offers great garbage service at a competitive price. Containers & curbside recycling also available.

**512-746-2000**

# Eagles

FROM Page 10A

Running back Stephen Marek ranks 11th in the area with 475 yards, despite being limited to 29 yards against Groesbeck. Fullback-linebacker Trent Taylor (6-3, 215) is considered to be a major college prospect.

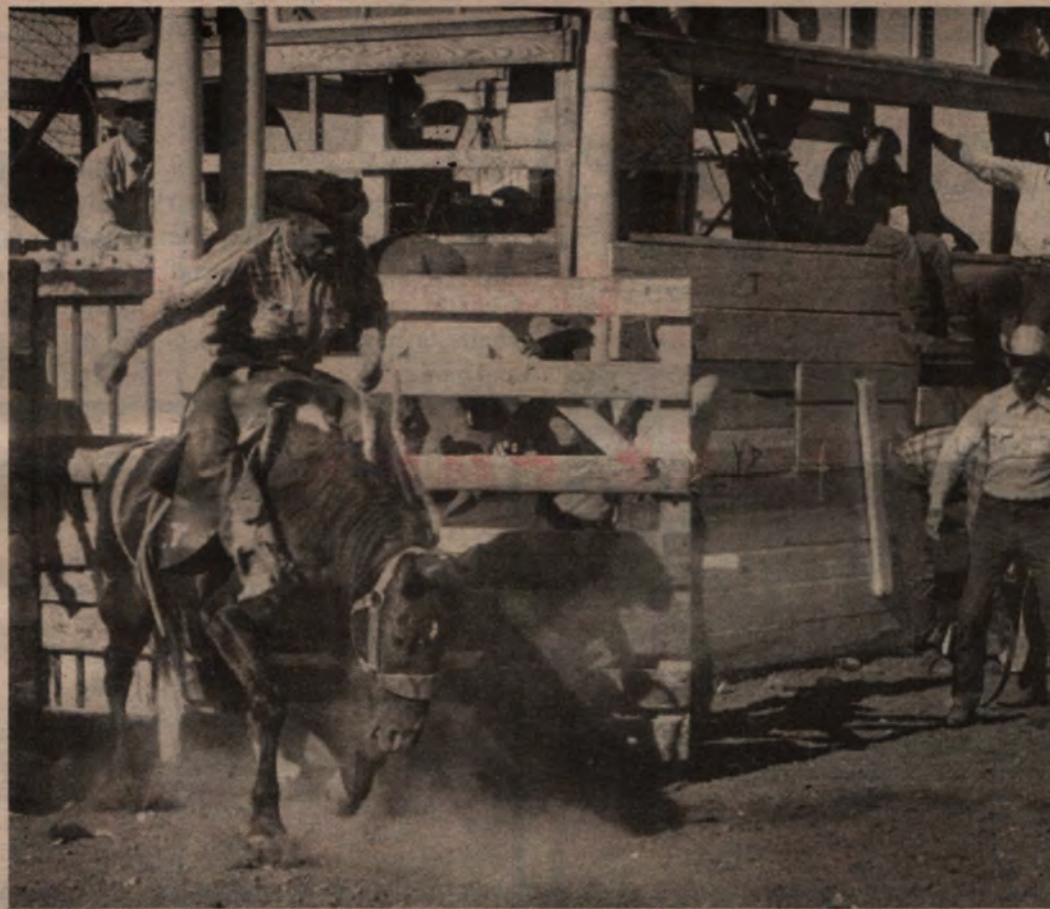
"They're good," Mullins said, adding that the strategy for this game will simply be to "go at it."

An added twist to the game is the fact that Dan Wasik, Salado's head football coach last year, is now an assistant on Coach Bill Baine's staff.

## Temple's CAC to present fairy tale

The Cultural Activities Center announces its presentation of The Dallas Children's Theatre touring production of JACK AND THE GIANT BEANSTALK at 2:30 p.m. Oct. 12 in the Frank W. Mayborn Auditorium.

This giant of a fairy tale adventure, by DCT's resident playwright Linda Daugherty, is a part of the CAC's new Temple Jaycees Family Fun Series and is sponsored in part by Texas Commission on the Arts and the Temple Jaycees.



**Is Your Bank Taking You For A Ride?**

Maybe the friendly folks at First State Bank of Temple can help you out. We're hometown people. And we've been to the rodeo before.

At FSB, we believe in *Friendly Style Banking*, banking that knows what rural life is about. Like how dry weather can affect your checkbook and determine whether or not a son or daughter will get to go back to college next year. Or how falling cattle prices can spell either

opportunity or tough times ahead, depending on your own individual situation. You see, the people you're banking with are probably facing the same thing. We've been there. We've done that. And we know we're all in this thing together, no matter how rough the ride may be.



**First State Bank**  
*Friendly Style Banking*

5550 SW H.K. Dodgen Loop in Temple • (254) 771-5550 / 402 N. Main in Temple • (254) 771-5880  
405 N. Highway 95 in Little River Academy • (245) 982-4818 / Main Street at Thomas Arnold in Salado • (254) 947-5852

Member FD.I.C.



**Travel Mart**  
Convenience Store  
947-5660 I-35, exit 284

Open 24 Hours

• COLD DRINKS • SNACKS

• CLEAN RESTROOMS

ATM INSIDE STORE



## Let's Celebrate!

### PARTY SUPPLIES

Balloon Arrangements • Gift Bags • Greeting Cards  
 Invitations • Gift Wrap • Ribbon • Decorating Supplies  
 Candles • Cups • Plates • Napkins • Wedding Supplies  
 Specialty Gifts • Sonburn Printable Paper

3301 E. Rancier #B-107½ (East Lake Shopping Center)  
 Killeen, TX 76543 (254) 690-7770  
 M-F 10-7; Sat 10-5; Sun 1-5 Cindy Fisher, Owner

## HOLLAND PACKAGE STORE

Beer • Liquor • Wine • Case Discounts  
Hwy. 95 next to Holland Food Mart  
Holland, Texas 657-2428

## Jim Beam

1.75 L      80 proof      \$16<sup>99</sup>

## Seagram's Gin

Liter      80 proof      \$9<sup>49</sup>

Specials good October 1-6, 1997

## Your lawn can't breathe!



**We can help by aerating.**

**Aeration makes it easier to have a great lawn**

You can improve the look of your lawn or turf, reduce watering requirements, and reduce the need for lawn chemicals with regular aeration. Aeration reduces soil compaction, the basic cause of many lawn and turf problems. Treatment is simple and affordable. We can help by aerating your lawn or turf once in the spring or early summer, and again in the fall. You'll see better fertilizer efficiency, reduced water needs, lusher greener grass, and reduced need for chemical pesticides. Call today to arrange aeration for your lawn or turf. Free estimates.

**WONDERLAWN**  
**Lawn & Tree Service**  
**947-4727**

# Anniversary celebration

*Grace Baptist Church invites you to take part in praise for 3 years of service to community*

Grace Baptist Church of Salado will celebrate its third anniversary Oct. 5 and praise God for the tremendous growth that He has brought to this fellowship of believers.

The celebration will begin on Sunday morning at 11 a.m. as the congregation reminisces about the things that have radically changed their lives over the last three years, and give credit to the One responsible for those things. Special emphasis will be on the influences that have shaped their lives.

Immediately following the Worship Service will be an afternoon of fellowship by having "Dinner on the Grounds". (Dominoes, Volleyball, Horse-shoes, etc.)

The day will be topped off at 6 p.m. with a concert by a hometown favorite here in Salado, Greg Berry.

Everyone is invited to attend, beginning at 9:45 a.m. for Sunday School. If you can't come for the whole day, be sure and catch what you can! Come at any time. Bring lawn chairs, a bag of sandwiches, and games.



*Greg Berry*

"Greg Berry is the definition of a Godly servant," says Todd Phillips of Austin Metro Bible Study. "God has gifted Greg with the ability to minister to all ages uniquely through his music. His Passion for sharing the Gospel in song is exhilarating and sincere."

## Services set for Elliott Elfrink

Mr. Elliott Baird Elfrink, age 36, of Belton passed away September 28, 1997.

Graveside services will be held Oct. 1 at the Salado Cemetery with the Rev. Bruce Baker officiating.

Mr. Elfrink was born March 8, 1961 in Dallas, TX. He was a graduate of J.J. Pearce High School in Richardson in 1979. He attended Rice University where he was a member of the Tennis Team. He later graduated from the University of Mary Hardin-Baylor in 1988. He was a member of Highland Park United Methodist Church in Dallas and a member of the National Poetry Society.

Survivors include his mother Zephia Elfrink of Salado and one sister Elizabeth E. Ing of Austin.

## Society sets painting exhibit

Artists from the Central Texas Watercolor Society will exhibit new paintings in a gallery show Oct. 6-27 in the Ball Performing Arts Center on the McLennan Community College Campus, 1400 College Drive- Monday-Thursday 8 a.m.-9 p.m., and Friday 8 a.m.-5 p.m. This show will coincide with MCC Theatre Department Productions Oct. 9-11 and the Open Door Arts Fest Oct. 18-19 at both the Art Center and MCC.

The Society, organized in 1985, along with others in ten major Texas cities, engage regional/national/international instructors to conduct advanced workshops for their membership. For information write CTWS, P. O. Box 21686, Waco, TX 76702-1686.

B	a	r	n	h	i	l	★	B	r	i	t	t
---	---	---	---	---	---	---	---	---	---	---	---	---

Saturday  
October 11, 1997

12 - 3 p.m.  
**Luana Anderson**  
*painting her Folk Art Santas*

★

6:30 p.m.  
**Dinner with Marie-Claire Quittelier**  
*Internationally Known Expert on Cooking*

Hands-on dinner workshop.... featuring

- Brioche toast with mushrooms
- Champagne Cornish game hens
- Green apple chutney
- Sautéed caramelized apples with Calvados on ice cream

Call for reservations

254.947.3277

Salado Square #6, Main Street

### TOWNE INTERIORS & DESIGNS

Brenda Ray, Licensed Interior Designer

- Complete Design Studio
- Custom Window & Bed Treatments
- Reupholstery
- Floor & Wall Coverings
- Furniture & Accessories
- Residential & Commercial
- Custom Artwork & Florals



2100 Trimmier Rd.  
Suite # 102, Killeen, TX  
At Liberty Square  
(254) 690-4900

# 1997 Salado Junior Varsity Eagles

(front row, from left) James Butler, Head Trainer, Jonathan McHaney #61, Saul Fraire #70, Joe Califano #2, Chris Ray #10, Dale Lisenbe #71, Larry Whitt #42, Michael Gonzalez #32, Kelly Peckham #66, J.D. Glaeser #1, (middle row, from left) Michael Gunter #35, Brad Johnston #76, Tigger Day #80, Sam Daniel #11, Rory Oldham #25, Michael Schoepf #18, Kevin Keller #62, Matt Fleck #24, Bryan McKee #50, Grant Schilling #67, Brent Hansen #82, Adam Wigley #60, (top row, from left) Donny Pipes #30, Garlen Hennig #84, Matt Gunter #52, David Palmer #22, Robert Ellis #44, Chris Woolard #64, Brandon Keating #77, Derek Cravens #17, Jeremy Whitacre #89, #79 Scott Marley, Sail Ricks #63. Not shown is Seth Wilson #68.



THE HISTORIC  
**STAGECOACH INN**

We're "Pulling"  
For the Eagles

Superb Dining • Delightful Motel  
Salado, Texas 254-947-5111



Let's Win!!

## Salado Dairy Queen

Thomas Arnold Rd. & I-35 947-5406  
Open Daily and late on home games

Go Salado!!



## Centrovision

Cable TV Service for Central Texas

Serving Salado • Little River-Academy • Morgan's Point  
• Lake Belton • Moody • Rogers • Troy  
773-1163 8 E. Barton Ave. Temple

### Eagle Players of the Week

Offensive Player

Defensive Player



Paul Mashburn

9-27-1 passing, 128 yards



John Woolard

10 tackles

## Gary Bartlett Construction

Residential • Commercial

(254) 947-5825

North Main St. Salado

The Eagles are  
"First" With Us!

### First State Bank



Main St. &  
Thomas Arnold  
947-5852  
Member FDIC

Way to Go  
Salado Eagles



Compass Bank

"Where There's  
Compass,  
There's a Way."

Main St. Salado 947-5051  
Member FDIC

Salado's  
"Home Team"  
Backs  
The Eagles!!



Bill Bartlett

N. Main St. Salado 254/947-5050

Backing the Eagles to Victory!



Rely on the Tiger

Open 24 Hours  
254-947-5660



Open 6a.m. - 10 p.m.  
254-947-8060 • Drive-thru

15 S. Stagecoach Rd.

## SHS Football Schedule

Date	Opponent	Place	Time
9/5	Riesel	Away	27-26
9/12	Moody	Home	42-6
9/19	Liberty Hill	Away	7-13
9/26	Thorndale	Home	15-18
10/03	Rosebud-Lott	Home	8 p.m.
10/10	*Rogers	Away	7:30 p.m.
10/17	*Florence**	Home	7:30 p.m.
10/24	*Hutto	Away	7:30 p.m.
10/31	*Jarrell	Home	7:30 p.m.
11/7	*Holland	Away	7:30 p.m.

\* District Games \*\* Homecoming Game

## JV, Jr. High Football Schedule

Date	Opponent	Site	7th	8th	JV
9/4	Riesel	Home			14-14
9/11	Moody	Away		21-8	22-0
9/18	Liberty Hill	Home	0-8	32-0	22-30
9/25	Thorndale	Home	0-13	21-8	13-0
10/02	Rosebud-Lott	Away	5 p.m.	6 p.m.	7 p.m.
10/09	Rogers	Home	5 p.m.	6 p.m.	7 p.m.
10/16	Florence	Away	5 p.m.	6 p.m.	7 p.m.
10/23	Hutto	Home	5 p.m.	6 p.m.	7 p.m.
10/30	Jarrell	Away	5 p.m.	6 p.m.	7 p.m.
11/6	Holland	Home	5 p.m.	6 p.m.	7 p.m.

Head Football Coach Joe Mullins

# Eagles prepare for Rosebud-Lott after close loss to Thorndale

by John Eubanks

The Salado High Eagles lost to the Thorndale Bulldogs 18-15 at their place Sept. 26.

The Eagles' second-straight heartbreaking loss evened their season record at 2-2.

They will host Rosebud-Lott at 8 p.m. Oct. 3 in their final tuneup before the start of District 26-2A play Oct. 10 at Rogers.

Salado lost to a previously

winless Thorndale team, now 1-3, despite outgaining the Bulldogs in total yardage, 418-366.

"We just started off a little slow and made some mistakes," Coach Joe Mullins said. "We kind of regrouped in the second half and played a good game."

Salado trailed 18-7 at half-time before cutting the deficit to 18-15 with 8:59 left in the fourth quarter on an 11-yard

TD run by John McLaughlin and a two-point conversion by Taylor Hutton.

Hutton scored Salado's first touchdown with 3:45 left in the second quarter, while Josh Lee kicked the extra point. Lee missed two field goals, a 29-yarder in the third quarter that was ruled just wide, and a 43-yarder late in the game that would have tied the score.

"We had a chance to tie the score," Mullins said, "but, you

know, it should have never been that close."

Mullins gave credit to Thorndale for playing a good game and not making many mistakes. "That was the difference," he said. "But our kids played hard, and they fought back and had a chance to win."

Hutton carried the ball 23 times for 176 yards of Salado's 290 rushing yards.

Quarterback Paul Mashburn completed nine of 27 passes

for 128 yards and had one interception against Thorndale. He also rushed for 25 yards on five carries, and was named offensive player of the week.

Defensive player of the week was noseguard John Woolard, who had 10 tackles. Hutton added 12 tackles, and Chad Kiphart had two interceptions.

The Eagles, who lost to Rosebud-Lott last season 35-14 will be playing a Cougar team that suffered its first loss of the season Sept. 26 to Class 3A Groesbeck, 28-20.

Despite losing to a Class 3A team for the first time in eight games, the Cougars dropped out of this week's Class 2A top 10 rankings. They had been ranked No. 6.

Rosebud-Lott quarterback Matt Luedke might not play, because of an ankle sprain. His backup, Kyle Parcus, threw for 139 yards and two touchdowns against Groesbeck, but suffered three interceptions.

See Eagles, Page 11A



## 3rd Annual Family Festival



Sponsored by the SALADO CHAMBER OF COMMERCE



### Saturday, October 4th

### 11 a.m. - 4 p.m.

### PACE PARK

RAIN DATE TO BE ANNOUNCED



Featuring

### DUCK RACE DOWN SALADO CREEK

TO BENEFIT THE SALADO YOUTH ASSOCIATION

\$25.00 Donation for each duck entered. 5 ducks for \$100, one dozen for \$200.

GRAND PRIZE - Choice of Ski Trip, Bahama Cruise, Disneyland or Hawaii.

SECOND PRIZE - Salado Shopping Spree, THIRD PRIZE - Framed Print by Ronnie Wells.

Prizes for Top Ten Ducks. Race begins at 3:30 pm

### EVENTS & FUN FOR ALL AGES

Tug-of-War  
Moon Walk  
Dunking Booth  
Soccer Kick, Baseball & Basketball Throw  
Kids Art Area  
Food & Drinks

Sponsored by Salado Pottery

Sponsored by Salado Lions Club, Rotary Club & Brookshire Brothers

Egg Toss  
Sack Race  
Balloon Race  
Face Painting  
Orange Relay  
Three Legged Race  
Sandbox Treasure Hunt



For more information please contact the Salado Chamber of Commerce at (254) 947-5040

**\$20 storage**  
**BELTON**  
**STOR-IT**  
**939-3338**

Complimentary Facial  
 & Make Over at  
**Botangles**  
 Mary Kay has a skin care program designed for your skin type. All basic skin care products are non-comedogenic and clinically tested for skin irritancy and allergy. Most are fragrance-free and safe for sensitive skin. Call today to receive your complimentary facial.  
  
 MARY KAY  
 FACE-TO-FACE BEAUTY ADVICE™  
 Anne Marie Harwell  
 (254) 947-3159

**BURGER KING**  
 Open 6a.m.-10 p.m.  
 Drive-thru

- Breakfast Menu
- Kid's Meals
- Shakes
- Burger Meals

254-947-8060  
 I-35, exit 284

# Saladoans win at Senior Games

Mildred Smith, Evelyn Lane, Margaret Tucker and Kay Short of Salado received gold medals in the 1997 Texas State Senior Games Sept. 27 in Temple.

They were among the 14-member line dance team R.S.V.P. (Retired and Senior Volunteer Program) Rhythm Rockers. It's the third win in three years for the group.

The team performed a boogie choreographed by Short, their leader and instructor, to the old Moon Mullins song, Cherokee Boogie.

Indian costumes were designed by Short and decorated by each member of the group. Each costume had 1,700 beads.

The gold medal was the first for Smith and Lane, new members of the team. It was the second gold medal for Tucker, who was part of the 1995 team.

It was the third win in as many years for Short, who won a silver medal in 1995 and a gold medal in 1996 with a dance that was choreographed by her.

Short has been a volunteer line dance instructor for two years. Classes are available through the senior activities (over 55) program at Harvest House on 11th Street in Temple.

Classes are held Monday and Wednesday at 1 p.m.



Team members are Mildred Smith, Evelyn Lane, Margaret Tucker and Kay Short.

# Eagles

FROM Page 10A

Running back Stephen Marek ranks 11th in the area with 475 yards, despite being limited to 29 yards against Groesbeck. Fullback-linebacker Trent Taylor (6-3, 215) is considered to be a major college prospect.

"They're good," Mullins said, adding that the strategy for this game will simply be to "go at it."

An added twist to the game is the fact that Dan Wasik, Salado's head football coach last year, is now an assistant on Coach Bill Baine's staff.

# Temple's CAC to present fairy tale

The Cultural Activities Center announces its presentation of The Dallas Children's Theatre touring production of JACK AND THE GIANT BEANSTALK at 2:30 p.m. Oct. 12 in the Frank W. Mayborn Auditorium.

This giant of a fairy tale adventure, by DCT's resident playwright Linda Daugherty, is a part of the CAC's new Temple Jaycees Family Fun Series and is sponsored in part by Texas Commission on the Arts and the Temple Jaycees.

## Trust Your Eye Care Needs to the Eye Center

The Eye Center provides a complete range of services including:

- No-stitch cataract surgery
- Complete eye exams
- Near-sightedness Correction Surgeries
- Contact lenses

773-7785

Mark F. Hollingsworth, M.D.  
Ophthalmologist  
Donald F. Semler, O.D.  
Contact Lens Specialist



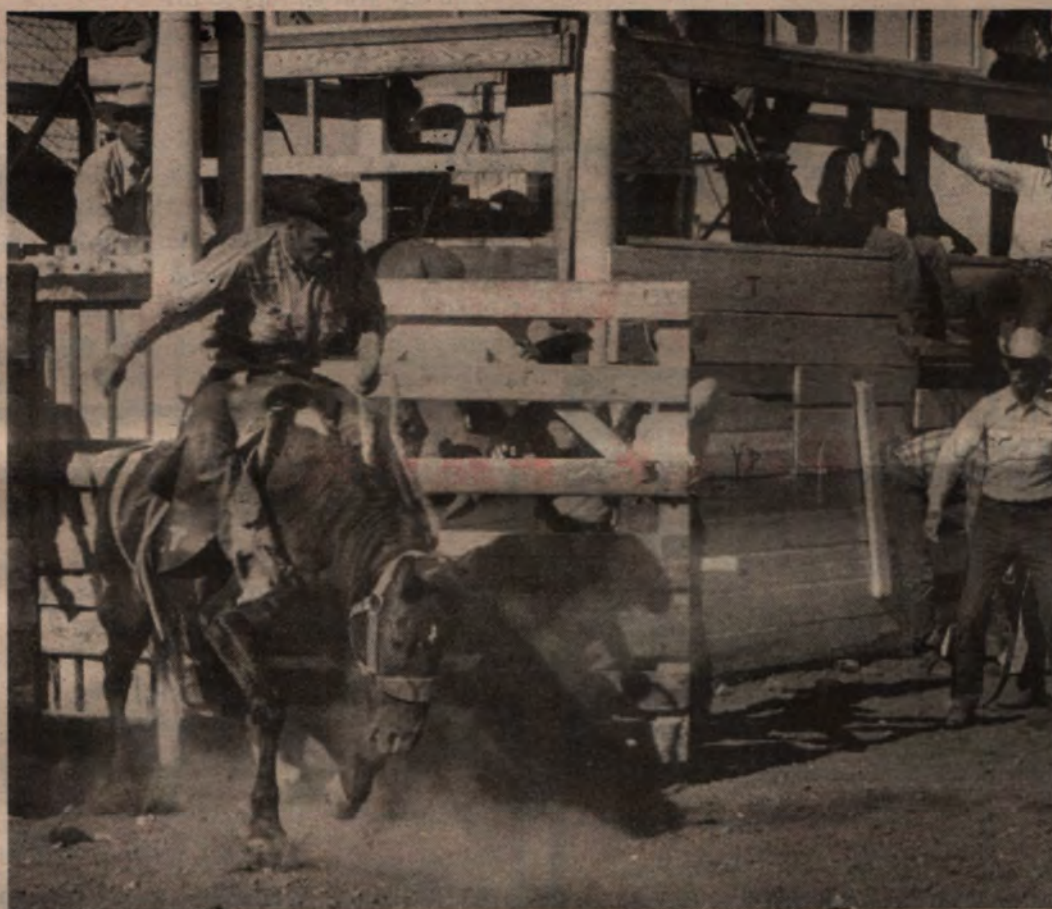
1817 S.W. H.K. Dodgen Loop Temple

## Clawson Disposal Service



offers great garbage service at a competitive price. Containers & curbside recycling also available.

512-746-2000



Is Your Bank Taking You For A Ride?

Maybe the friendly folks at First State Bank of Temple can help you out. We're hometown people. And we've been to the rodeo before.

At FSB, we believe in *Friendly Style Banking*, banking that knows what rural life is about. Like how dry weather can affect your checkbook and determine whether or not a son or daughter will get to go back to college next year. Or how falling cattle prices can spell either

opportunity or tough times ahead, depending on your own individual situation. You see, the people you're banking with are probably facing the same thing. We've been there. We've done that. And we know we're all in this thing together, no matter how rough the ride may be.



First State Bank  
*Friendly Style Banking*

5550 SW H.K. Dodgen Loop in Temple • (254) 771-5550 / 402 N. Main in Temple • (254) 771-5880  
405 N. Highway 95 in Little River Academy • (245) 982-4818 / Main Street at Thomas Arnold in Salado • (254) 947-5852

Member F.D.I.C.



**Travel Mart**  
Convenience Store  
947-5660 I-35, exit 284

Open 24 Hours

• COLD DRINKS • SNACKS  
• CLEAN RESTROOMS

ATM INSIDE STORE





## Let's Celebrate!

### PARTY SUPPLIES

Balloon Arrangements • Gift Bags • Greeting Cards  
Invitations • Gift Wrap • Ribbon • Decorating Supplies  
Candles • Cups • Plates • Napkins • Wedding Supplies  
Specialty Gifts • Sonburn Printable Paper

3301 E. Rancier #B-107½ (East Lake Shopping Center)  
Killeen, TX 76543 (254) 690-7770  
M-F 10-7; Sat 10-5; Sun 1-5 Cindy Fisher, Owner

## HOLLAND PACKAGE STORE

Beer • Liquor • Wine • Case Discounts  
Hwy. 95 next to Holland Food Mart  
Holland, Texas 657-2428

## Jim Beam

1.75 L 80 proof \$16<sup>99</sup>

## Seagram's Gin

Liter 80 proof \$9<sup>49</sup>

Specials good October 1-6, 1997

## Your lawn can't breathe!



**We can help by aerating.**

**Aeration makes it easier to have a great lawn**

You can improve the look of your lawn or turf, reduce watering requirements, and reduce the need for lawn chemicals with regular aeration. Aeration reduces soil compaction, the basic cause of many lawn and turf problems. Treatment is simple and affordable. We can help by aerating your lawn or turf once in the spring or early summer, and again in the fall. You'll see better fertilizer efficiency, reduced water needs, lusher greener grass, and reduced need for chemical pesticides. Call today to arrange aeration for your lawn or turf. Free estimates.

**WONDERLAWN**  
Lawn & Tree Service  
947-4727

# Anniversary celebration

*Grace Baptist Church invites you to take part in praise for 3 years of service to community*

Grace Baptist Church of Salado will celebrate its third anniversary Oct. 5 and praise God for the tremendous growth that He has brought to this fellowship of believers.

The celebration will begin on Sunday morning at 11 a.m. as the congregation reminisces about the things that have radically changed their lives over the last three years, and give credit to the One responsible for those things. Special emphasis will be on the influences that have shaped their lives.

Immediately following the Worship Service will be an afternoon of fellowship by having "Dinner on the Grounds". (Dominoes, Volleyball, Horse-shoes, etc.)

The day will be topped off at 6 p.m. with a concert by a hometown favorite here in Salado, Greg Berry.

Everyone is invited to attend, beginning at 9:45 a.m. for Sunday School. If you can't come for the whole day, be sure and catch what you can! Come at any time. Bring lawn chairs, a bag of sandwiches, and games.



**Greg Berry**

"Greg Berry is the definition of a Godly servant," says Todd Phillips of Austin Metro Bible Study. "God has gifted Greg with the ability to minister to all ages uniquely through his music. His Passion for sharing the Gospel in song is exhilarating and sincere."

## Services set for Elliott Elfrink

Mr. Elliott Baird Elfrink, age 36, of Belton passed away September 28, 1997.

Graveside services will be held Oct. 1 at the Salado Cemetery with the Rev. Bruce Baker officiating.

Mr. Elfrink was born March 8, 1961 in Dallas, TX. He was a graduate of J.J. Pearce High School in Richardson in 1979. He attended Rice University where he was a member of the Tennis Team. He later graduated from the University of Mary Hardin-Baylor in 1988. He was a member of Highland Park United Methodist Church in Dallas and a member of the National Poetry Society.

Survivors include his mother Zephia Elfrink of Salado and one sister Elizabeth E. Ing of Austin.

## Society sets painting exhibit

Artists from the Central Texas Watercolor Society will exhibit new paintings in a gallery show Oct. 6-27 in the Ball Performing Arts Center on the McLennan Community College Campus, 1400 College Drive- Monday-Thursday 8 a.m.-9 p.m., and Friday 8 a.m.-5 p.m. This show will coincide with MCC Theatre Department Productions Oct. 9-11 and the Open Door Arts Fest Oct. 18-19 at both the Art Center and MCC.

The Society, organized in 1985, along with others in ten major Texas cities, engage regional/national/international instructors to conduct advanced workshops for their membership. For information write CTWS, P. O. Box 21686, Waco, TX 76702-1686.

B	★	B r i t t
---	---	-----------

Saturday  
October 11, 1997

12 - 3 p.m.  
**Luana Anderson**  
*painting her Folk Art Santas*

★

6:30 p.m.  
**Dinner with Marie-Claire Quittelier**  
*Internationally Known Expert on Cooking*

Hands-on dinner workshop.... featuring

- Brioche toast with mushrooms
- Champagne Cornish game hens
- Green apple chutney
- Sautéed caramelized apples with Calvados on ice cream

Call for reservations  
254.947.3277  
Salado Square #6, Main Street

**TOWNE INTERIORS & DESIGNS**

Brenda Ray, Licensed Interior Designer

- Complete Design Studio
- Custom Window & Bed Treatments
- Reupholstery
- Floor & Wall Coverings
- Furniture & Accessories
- Residential & Commercial
- Custom Artwork & Florals



2100 Trimmier Rd.  
Suite # 102, Killeen, TX  
At Liberty Square  
(254) 690-4900



## Presbyterian Church to hold Charter Sunday

For the first time in more than 100 years, Presbyterians will have a church in Salado. The Presbyterian congregation in Salado will observe Charter Sunday on Oct. 5, and will officially become a Presbyterian Church.

Grace Presbytery, the governing body for Presbyterian churches in central and northern Texas, voted on March 15 to charter the church in Salado.

Until that time, the local congregation had functioned as a mission church. On Oct. 5, officials from Grace Presbytery will be present for the service of organization and commission.

At this service, the Rev. Billy P. Smith, Th.D., will be

recognized as Organizing Pastor, and the Rev. Marilyn Wedell-Legge will be recognized as Parish Associate.

Elders will be ordained, and the session members will be installed. The session members are Bill Jackson, Beverly Jones, Barclay McCort, Jim McCracken, Jean Teal, Morris Todd and Linda Walls. Also, the charter membership roll will be presented during this service.

The Presbyterian Church of Salado was initiated by the Rev. Billy P. Smith, Th.D., and his wife, LaGreta Reed, when they announced that a Presbyterian worship service would be held in Allen Meeting Hall located at the Inn of Salado.

That first service was held on March 10, 1996. Shortly thereafter, a steering committee met to organize a mission church and to name Rev. Smith as pastor. Since that first Sunday, the church has enjoyed steady growth. The congregation continues to meet in Allen Meeting Hall at 10 a.m. Sundays.

Rev. Wedell-Legge will preach the sermon for Charter Sunday. The service will be held at 3:30 p.m. in the Salado Civic Center, and a reception at Allen Meeting Hall will follow the service. The public is cordially invited to attend the service and reception, and share this joyous occasion with the Presbyterian Church of Salado.

## Mid-Tex College Night scheduled Oct. 21

Mid-Texas College Night will be held in the Bell County Expo Center 6:30-9 p.m. Oct. 21.

Counselors from area high schools are collaborating to produce another successful college night. Over 100 colleges and technical school representatives will be available to distribute information and answer pertinent questions regarding their universities.

This is a great opportunity for parents and students to seek information from a variety of schools and hear specific program requirements.

The following individual educational sessions will be offered. From 6:30-7 p.m., "Non-Traditional Ways of Earning High School And College Credit" will be in the As-

sembly Hall. This session explains how juniors and seniors can earn college credit while attending high school.

From 7-9 p.m., college representatives will be in the Exposition Area to visit with students and parents about admission and financial aid require-

ments specific to their colleges.

"Financial Assistance (in English) will be offered in the Assembly Hall 7-8 p.m. This same information will be given in Spanish to the Special Events Room from 7:20-8:30 p.m.



## Armstrong plans reunion Oct. 5

The Annual Armstrong Homecoming will be held Oct. 5 at the Old Armstrong School House (the community center).

All former teachers, students and friends are invited. Registration begins at 1 p.m.

There will be a short program, refreshments and time for visitation.

## Hadley Pottery

at Another Day,  
Salado Square

**The Gazebo at Another Day**  
#5 Salado Square,  
Main St. Salado, TX 76571  
254/947-0300

## Belton Chiropractic

Offering gentle care for the whole family



Advanced Proficiency Rated Activator Methods Chiropractic Technique®

325 N. Main St. • Belton  
254/933-2273 (CARE)

Hours: M-W-F 9am-1pm & 3-7pm;  
Tues, Sat. 9am-1pm



Cheryl Lipton, D.C.  
1982 BHS Graduate  
1987 UMHB Graduate  
1995 PC Graduate

Linda Rountree Pritchard, R.N.  
Registered Massage Therapist

Therapeutic Massage  
Stress Management

Salado Square

For Appointment, Call

(254) 947-HAND  
(4263)

## Partners Mortgage Services, Ltd.

Did You Know . . . ?



J.T. Eckstrum

» Money Magazine recommends Partners Mortgage as having the best rates in Central Texas?

» I can do 10% or 5% down loans with no mortgage insurance?

» I can do Bad Credit Loans so you don't have to rent?

» I have a Second Lien License to do refinances plus home improvements as one loan?

» I specialize in new construction to help save you money?

» I LIVE in Salado and know the area and the market first hand.

(254) 770-3003

(254) 947-8366

(evenings & weekends appts. available)

## CARPET

- Hard Wood
- Ceramic Tile
- Sheet Vinyl
- Blinds
- Shutters
- Wallpaper

Blinds Up to 75% off GRABER

Service You Will Like at  
Prices You Will Love

East Access Rd. I-35

North of Harper Talasek

(254) 947-0048

Free Estimates

Open 9 a.m.-5 p.m. Mon-Fri

Sat 9 a.m.-12 Noon

Salado Floors & Walls

Your Hometown Decorating Center

Winter's not here yet,  
but the Blizzard's are!



Salado Dairy Queen

Exit 284 & I-35  
Open Daily  
(254) 947-5406



Big  
\$1.29

12 oz.



Bigger  
\$1.79

16 oz.



BIGGEST  
\$2.49

21 oz.

MAJOR APPLIANCES  
LAWN & GARDEN  
TVS • STEREO  
TOOLS

**SEARS**

Retail Dealer  
3103 S.W. H.K.  
Dodgen Loop  
TEMPLE  
254-770-1221

My Hiding Place  
**Barber Shop**  
Mon-Sat  
Call for same day  
Appointment  
Royal St. Commons  
Royal St. Salado  
**254/947-HIDE**

# Prizes galore in duck race

"Come See What a Nursing Home Should Be"

**Park Place Manor**  
810 East 13th Avenue  
Belton, TX 76513  
254-939-1876

**Greater Gifts**  
Christian Books and Gifts

- Books
- Bibles
- Bible Studies
- Church Supplies
- Sunday School
- Supplies
- Children's Books
- Bible Imprinting
- Fontanini
- Seraphim Angels
- Collectables
- Potpourri Candles
- Jewelry
- T-Shirts
- Music

Books By: Randy Alcorn - Billy Graham  
- T.D. Jakes - Rick Warren - Lacy Morris -  
Chuck Swindoll and more...

Store Hours - 9:30-5:30 Mon-Sat  
Unique Gifts • Layaway available • Bridal Registry

Gary and Pat Hamilton  
210 E. Central  
Belton, Texas 76513  
(254) 939-7962

**LAWN PRO**  
LAWN CARE &  
LANDSCAPE SERVICES

- Insured & Bonded
- Professional & Courteous
- Affordable Rates
- Monthly Billing

FREE ESTIMATES  
254-791-LAWN (5296)

**STOW AWAY MINI STORAGE**

Just off I-35 South of Salado  
Behind Farm & Garden Supply  
& next to Texaco Truck Stop

**947-5502 or 718-7887 (Paul Sanford)**

**FENCES BY FARR**

CUSTOM WOOD FENCING • CHAIN LINK • SPLIT RAIL  
PATIO COVERS • DECKS • REPAIRS • WARRANTY  
FINANCING AVAILABLE • RESIDENTIAL • COMMERCIAL

SATISFACTION GUARANTEED • TRAVIS FARR, OWNER

1-800-780-5355  
Belton, TX **780-2778**

**BLUME**  
LAWN SPRINKLER SYSTEMS  
P.O. Box 21503 • Waco, Tx. 76702-1503

1-800-615-5913

Waco (817) 666-0773  
Fax (817) 666-0788

Gary Prince  
L.I. #5612

While the first place winner in the Salado Family Festival Duck Race Oct. 4 will receive a travel gift certificate valued at \$3,000, there are plenty of great prizes for the top ten finishers of the annual race down Salado Creek.

Mike and Shirley Cornett will use their first place prize from 1996 for a weeklong tour of the fall foliage in New England with a stop in Boston.

The Cornetts bought their winning ducks from Jean White last year. She sold the Cornetts their ducks for this year's race, as well, though she made no promise as to whether the Cornetts would win again.

Carol Scroggins won the Shopping Spree last year and used it for Christmas shopping for family, friends and self. Dr. Tim and Carol Scroggins bought their winning duck from Leigh Drake. Leigh sold the Scroggins ducks to race this year, as well, but made no guarantee.

Hopefully, the Cornetts and the Scroggins will have plenty of competition this year.

Members of the Salado Family Festival committee, Salado Chamber of Commerce directors, as well as soccer and baseball parents, are selling ducks for the Third Annual Duck Race in Pcae Park Oct. 4.

You can enter the race easily enough: \$25 for one duck, \$100 for five ducks and a flock of 12 ducks for \$200.

A maximum of 1,000 ducks will be sold, so the chances of your rubber ducky coming across the finish line are pretty good, according to organizers.

"Besides, it's all in good fun as we raise money to support the Salado Youth Association in its efforts to maintain and develop the youth fields off Rose Lane.

The top prize in the Duck Race is a \$3,000 travel gift certificate, which can be used in any manner of ways, whether for one super vacation or several small trips.

The second place prize is a Salado Shopping Spree, valued at \$1,400, including lunch for two at Browning's Courtyard Cafe, and a night's stay at the Salado Inn (soon to be Super 8).

The Salado Shopping Spree is composed of gift certificates donated by the generous shops, boutiques and galleries in Salado.

Christy's of Salado, Sir Wigglesworth, and Susan Marie's have each given \$100 gift certificates.

Giving \$50 gift certificates are these shops: Barnhill-Britt, Bundle of Joy, CIO, Feathered Nest, Horsefeathers, Magnolia's on the Square, Markie McTravel, Salado Pottery, Strawberry Patch, Streets of Salado, Samm's Family Restaurant and Village Pharmacy.

These stores have given \$25 gift certificates: Another Day, Bayberries on Main, Benton's, Bird in Hand, The Chopping Block at Robertson's Hams, Deanna's Floral Creations, Hill Country Cottage Gardens, Main Street Place, Morning Glory Farm, Robertson's Hams, Royal Emporium, Royal Salamander, Salado Country Antiques, The Store at Old Town Salado and Tineke's Book Winkel.

Third place prize is a Ronnie Wells' print, which was the winner of a Ducks Unlimited award. The print is framed by Prellop Fine Art Gallery. In addition to the fine print, the third place winner will also enjoy Dinner for Two at Inn on the Creek.

The fourth place prize is a two-night stay for two people

at the famous YO Ranch in Mountain Home, Texas. The YO Ranch stay is given by Charles and Mary Helen Schriener IV.

Fifth place prize is a men's sport shirt by New Man, exclusively represented by Grace Jones, as well as a lady's scarf from Grace Jones. The couple may wear those items during their night's stay at the Mill Creek Inn with a free continental breakfast in the room. One round of golf with shared cart for two is also included.

Sixth place is a Lynn Haney Santa Sculpture, given by Gregory's, an American Crafts Gallery, valued at \$240. The sixth place winner will also receive their choice of a Bill Jaxon print, given by First State Bank Salado.

Seventh place prize is a night's stay in the Rose Room of the Inn at Salado bed & Breakfast. The winner will also receive an American Eagle Dollar Proof set from Compass Bank.

The eighth place winner will get a Bronze duck statue from Heirlooms in Salado, valued at \$100. Also, an American Eagle Dollar Proof set from Compass Bank.

The ninth place winner will enjoy Sunday brunch for four at the Stagecoach Inn and a gift certificate for \$75 from the Halley House bed and breakfast inn. Also, an American Eagle Dollar Proof set from Compass Bank.

The tenth place winner will receive four \$25 gift certificates from the Salado Mansion restaurant and a \$50 gift certificate from The Rose Mansion Bed & Breakfast. Also, an American Eagle Dollar Proof set from Compass Bank.

For tickets in the Duck Race, call 947-5040 or 947-5050.

## Festival FROM Page 1A

The Duck Race is the chief fund raiser of the Salado Family Festival, with all proceeds being given to the Salado Youth Association.

Ducks are \$25 each, five for \$100 or a flock of 12 for \$200. A maximum of 1,000 ducks will be sold for this year's race down Salado Creek.

A \$3,000 travel gift certificate is the top prize and a Salado Shopping Spree valued at more than \$1,300 is the second place prize. A complete list of prizes appear elsewhere in this issue of the Salado Village Voice.

For more information about the Family Festival or to order your ducks, call the Salado Chamber of Commerce at 947-5040 or Festival cochairs Melanie Kirchmeier and Rita Brown at 947-5050.

**SCOTT & WHITE CLINIC, KILLEEN**  
3801 Scott & White Drive  
680-1200

**Regular Clinic Hours**  
*Pediatrics*  
Monday - Friday 8:30 a.m. - 5:30 p.m.  
*Family Medicine*  
Monday - Friday 8:30 a.m. - 5:00 p.m.

**Acute Care Clinic Hours**  
*Pediatrics*  
Monday - Friday 5:00 p.m. - 5:30 p.m.  
Saturday 8:30 a.m. - 2:00 p.m.  
*Family Medicine*  
Monday - Friday 4:00 p.m. - 6:30 p.m.  
Saturday & Sunday 8:30 a.m. - 4:00 p.m.

**SCOTT & WHITE KILLEEN DENTAL CLINIC**  
Hallmark Plaza, Suite A  
4400-3 East Central Texas Expressway  
699-5777

**Clinic Hours**  
Monday - Friday 8:00 a.m. - 5:00 p.m.

### 3 SHS grads attend Tarleton Duck Camp

Three Tarleton State University students from Salado attended Duck Camp this summer at Camp Champions in Marble Falls. Hosted just prior to the beginning of the fall semester, Duck Camp is a four-day three-night crash course in what has been called the "Tarleton Experience."

Among those attending this summer were McKenzie Brown, Cassandra Kite and Jason Williams, all recent graduates of Salado High School.

Sponsored through the Division of Student Services, Duck Camp is aimed at making first-semester freshmen feel more at home on the Tarleton campus. Now in its third year, enrollment in Duck Camp has grown steadily and this summer over 240 campers participated in the event.

Participants are divided into small groups of eight to 12 campers under the guidance of two group leaders. The groups are given names reflecting some significant part of Tarleton's history such as the Silver Bugles, Texan Riders,

Drum Beaters, Cannons or Purple Books.

Seminars are designed to help students with the transition from high school to college. Topics include dating, city and county regulations, time management, finances and campus activities. The "traditions" sessions discuss Tarleton history and campus landmarks.

Each evening a guest speaker, usually a Tarleton alumni, speaks to the campers about some special aspect of going to school at the University.

"The spirit behind Tarleton is derived from its students, traditions and organizations," said Dr. Garner Lewis, Associate Vice President of Student Services. "We believe that by helping first semester freshmen establish friendships, develop leadership skills and learn about student opportunities and activities their chances of adjusting to campus life are greatly improved."

Statistics have shown that retention among incoming

freshmen who attend Duck Camp is significantly higher than those who don't. "I have had students come up to me since school began and say they were so excited when they got to class those first days and discovered people they had met at Duck Camp," said Lewis.

**WHY PAY MORE?**  
COMPARE OUR LOW PRICES  
The Best Service in Town  
Since 1980



**THE OIL EXCHANGE**  
Since 1980 • All Major Brands Oil Available  
57th & Scott Blvd. Temple • 778-5195  
Mon.-Fri. 8:00-5:30, Sat. 8:00-5:00

**10 MINUTE OIL CHANGE**

**\$16.95\*** OIL, LUBE & FILTER

Add \$1 for Env. Disposal Surcharge with this coupon. Expires 12/25/97. All other oils \$1.00 Off towards regular price on full service oil change of your choice with this coupon.

**PRICE INCLUDES**  
Up to 5 qts. Pennzoil 30W oil or Quaker State 30W oil, new oil filter, chassis lubrication, check and fill all major fluid levels, air tires, check & clean most air filters, visually inspect belts, hoses, etc., attach door sticker & window static sticker AND reminder card mailed - in 10 minutes or less at no extra charge for most vehicles. **NO APPOINTMENT NECESSARY.**

#### PUBLIC NOTICE

Central Telephone Company of Texas doing business as Sprint ("Sprint") has filed a Petition with the Public Utility Commission of Texas ("Commission") to establish a fee for the purpose of recovering lost revenues and increased costs associated with Expanded Local Calling Service (ELCS) petitions for several Sprint exchanges pursuant to the Commission's Substantive Rule 23.49(c)(12) passed as a consequence of S.B. 632, 73rd Legislature-Regular Session.

If approved, the monthly increase in charges to Sprint's local exchange customers will be \$.34 per month, per customer line. This means that the current ELC surcharge rate will increase from \$1.15 per month, per customer line to \$1.49 per month, per customer line. Prior to final approval by the Commission, all Sprint local exchange customers subscribing to basic local service customers who are not already paying a \$3.50 (Residential) or \$7.00 (Business) ELCS charge will be billed the additional monthly amount beginning on an interim basis no sooner than the October 1, 1997, billing cycle. Sprint has requested this rate be implemented on an interim basis, subject to refund, until such time as the Commission has entered a final order on this matter.

The net annual effect on the revenues of Sprint will be \$0.00 as the requested fee replaces lost revenues and reimburses Sprint for the increased direct cost of service associated with all of Sprint's ELCS implemented into service between April 2, 1996, and May 31, 1997. The total lost revenues and increased costs associated with ELCS for Sprint's ELCS implemented into service between April 2, 1996, and May 31, 1997, is \$665,209.80.

The deadline for intervention in this matter is November 10, 1997. Persons who wish to intervene in or comment upon these proceedings should notify the Commission by November 10, 1997. All requests to intervene should be mailed to the Public Utility Commission of Texas, 1701 N. Congress Ave., P.O. Box 13326, Austin, Texas 78711-3326. Further information may also be obtained by calling the Public Utility Commission Office of Customer Protection at (888) 782-8477 (Toll Free) or (512) 936-7136 for text telephone, or by writing the Public Utility Commission of Texas, 1701 N. Congress Ave., P.O. Box 13326, Austin, Texas 78711-3326.

#### NOTIFICACIÓN PÚBLICA

La Central Telephone Company of Texas haciendo negocios bajo el nombre Sprint ("Sprint") ha presentado una Petición a la Comisión de Servicios Públicos de Texas ("Comisión") para establecer una tarifa con el propósito de recuperar ingresos perdidos y aumentar los costos asociados con las peticiones del Servicio Expandido de Llamadas Locales (ELCS) para varios intercambios de Sprint en conformidad a la Regla Substantiva de la Comisión 23.49 (c) (12) que pasó como consecuencia de S.B. 632 de la 73era Sesión Regular de la Legislatura.

Si es aprobado, los cargos mensuales para los clientes del intercambio local de Sprint aumentarán a \$0.34 por mes, por cada línea de cliente. Esto significa que la tarifa ELC actual aumentará de \$1.15 por mes, por cada línea de cliente a \$1.49 por mes, por cada línea de cliente. Antes de la aprobación final por la Comisión, todos los clientes del intercambio local de Sprint suscritos al servicio básico local que aún no están pagando un cargo de \$3.50 (Residencial) o \$7.00 (Comercial) por ELCS, les será facturado la cantidad mensual adicional empezando en una base intermedia, no antes del ciclo de facturación del primero de octubre 1997. Sprint ha solicitado que esta tarifa se implemente en base intermedia, sujeta a reembolso, hasta el momento en que la Comisión haya emitido una orden final en este asunto.

El efecto neto anual en los ingresos de Sprint será de \$0.00 ya que la tarifa solicitada reemplaza pérdidas de ingresos y reembolsa a Sprint por el aumento de costo directo de servicios asociados con todos los ELCS implementados en servicio entre el 2 de abril de 1996 y el 31 de mayo de 1997. El total de las pérdidas de ingresos y aumento de costos asociados con ELCS para los ELCS de Sprint implementados en servicio entre el 2 de abril de 1996 y el 31 de mayo de 1997 es de \$665,209.80.

La fecha de vencimiento para la intervención en este asunto es el 10 de noviembre del 1997. Personas que deseen intervenir o comentar acerca de estos procedimientos deben de notificar a la Comisión a no más tardar del 10 de noviembre del 1997. Toda solicitud para intervenir debe ser enviada a la Public Utility Commission of Texas, 1701 N. Congress Ave., P.O. Box 13326, Austin, Texas 78711-3326. Se puede obtener información adicional llamando a la Oficina de Protección del Cliente de la Comisión de Servicios Públicos al (888) 782-8477 (sin cargos) o (512) 936-7136 para teléfonos de texto o escribiendo a la Public Utility Commission of Texas, 1701 N. Congress Ave., P.O. Box 13326, Austin, Texas 78711-3326.

**TIMOTHY SCROGGINS, M.D.**  
and **KEN HAWTHORN, P.A.-C**  
would like to announce the opening of their **NEW CLINIC** located at  
4520 E. Central Expwy, Suite 101  
Killeen, Texas 76543.  
Please call for appt.  
**(254) 699-8521**  
We accept most insurance.

**SALE**

**UP TO 1/2 OFF**

**Remnants  
& Roll Ends of  
Carpet, Vinyl  
& Ceramic Tile**

Monday-Friday 8-6 Saturday 10-3  
*(Installation Available)*

**THE CARPET CENTER**  
BELTON, TX  
• Residential • Commercial •  
Largest Show Room in South Central Texas  
Since 1989 Loop 121 & I.H. 35 817-939-1039

# Dunnahoo to marry Bethke

Mr. and Mrs. Ben Dunnahoo, of Salado, are pleased to announce the engagement of their daughter, Diana Rene, to Emil D. Bethke (Trey). They are planning a March 1998 wedding at St. John's Lutheran Church in Bartlett.

Diana is a graduate of Salado High School and is currently a senior at Texas A&M University. Her grandparents are Mr. and Mrs. E.H. Knetig, Sr., and Mrs. Mae Morris, all of Corpus Christi.

Trey is also a graduate of Salado High School and is currently working on his Master's Degree at Texas A&M University. Trey is the son of Mr. and Mrs. Noel Scully, of Salado, and Mr. and Mrs. Emil D. Bethke, of Red Ranger.

His grandparents are Mrs. Geraldine Evans, of Salado, and Mrs. Beulah Bethke, of Temple.



Diana Rene Dunnahoo and fiancée Emil D. Bethke

## Rev. Dearing will present Peter, a dramatic monologue

Rev. Frank Dearing will present "Peter: A Dramatic Monologue" at the Val Verde Baptist Church 11 a.m. Oct. 5.

Rev. Dearing is a graduate of the College of Marshall, Ouachita Baptist University, and Southwestern Baptist Theological Seminary. Before his retirement in May, 1993, he had served as pastor of Texas churches for forty years. Those pastorates were in Fort Worth, Decatur, Crane, Kerrville, Austin, and El Paso.

He has also served as Interim Pastor of churches in Huron, South Dakota; Havre, Montana; Casper, Wyoming; Torrington, Wyoming; and Texas.

Rev. Dearing and his wife Marilyn have three grown children, Sharon, Stewart, and Paul. Marilyn, researched, designed, and made the robe and head piece that Frank wears during his presentation. She accompanies him wherever he goes.

**NO MORE PMS!**  
**NO MORE RAGING HORMONES!**  
END THE DISCOMFORTS OF  
**MENOPAUSE**

WITHOUT THE DANGEROUS SIDE EFFECTS OF COMMONLY  
PRESCRIBED DRUGS!  
Premarin-Ask your doctor about the main source of this drug!  
(PREGNANT MARE'S URINE)

It's a natural problem - Find a natural solution

Do you (or someone you love) suffer from these symptoms every month?  
Depression, anxiety, mood swings, hot flashes, decreased libido, cramping,  
irritability, insomnia, weight gain, brittle bones, bloating, food cravings, breast  
tenderness and other similar problems.

Are you concerned about osteoporosis?

**Longevity Women's Formula**  
16% Diosgenin Formulation

A safe progesterone cream from natural sources with no dangerous side effects!

To order, call 1-800-242-1000, use PIN# 7613.  
Ask for product #195. \$24.95 per tube (plus tax,s&h).  
**30 day 100% money-back guarantee on all products.**  
For FREE product information call Charles Evans at (254)947-0159.  
Ask how to buy **WHOLESALE** at no extra cost!

This formulation made available for the first time to U.S. Consumers by Longevity Network.

**Serving**  
Individual Investors since 1871.

Stocks	Tax-free bonds
Mutual funds	CDs
Bonds	Money market funds
Government securities	IRAs

... and much more!

Call or stop by today!

Member SIPC  
**Michael K. Gunter**  
208 E. Central  
Belton  
939-5824

Serving individual investors from more than 3,174 offices nationwide.

**Edward Jones**

**DQ**  
**Salado**  
**Dairy Queen**

Exit 284 & I-35  
Open Daily  
(254) 947-5406

**The Dude**  
**\$1.49**

**Dude Combo**  
**\$2.99**

Dude Sandwich, fries & 21 oz. drink

**" The Most Beautiful Golf Course in Texas. " \***

Tucked away in historic Salado, just 45-minutes north of Austin on I-35, is the most beautiful golf course in Texas. The unique No. 3 green on our challenging 18-hole Robert Trent Jones II golf course promises an unforgettable experience.

Golf Packages starting at \$67.50 per person with 1 night lodging. Call for details. Rates effective through May 31, 1997. Ask about our 7 night vacation package.

*"If you can't relax and enjoy golf at Mill Creek, you can't do it anywhere." \**

**Mill Creek**

**THE HEART OF TEXAS**

\* Quotes are excerpts from Great Texas Golf by Pat Seelig, Wordware Publishing, Inc.

P.O. Box 67, Salado, TX 76571  
1-800-736-3441 254-947-5141

A Top Notch Show  
**Octoberfest 97**  
Oct. 4-5  
Arts • Crafts  
& Gift Show

**Bell County Expo**  
**This Weekend**  
Sat. 10-6, Sun. 11-4:30  
Everything for the fall & holiday season.  
\$2.50 Admission good both days.  
Lots of Christmas Yard Art

Antique Restoration & Repair

**VILLAGE  
WOODWORKS**

Furniture Refinishing/Stripping

**(254) 947-0345 Salado, TX**

# Local artist Ronnie Wells shares colorful life with Salado Lions club

by John Eubanks

Local artist Ronnie Wells told the Salado Lions Club of his Tom Sawyer-like childhood in the woods of Louisiana, an idyllic time that inspired his work as an outdoors artist.

Wells, 52, addressed the Lions during their Sept. 25 meeting at Mill Creek Country Club.

Noting that he's "a decent artist but not much of a public speaker," Wells relied on a vivid imagination to entertain the Lions. Most of the stories he wove centered around his hometown of Jonesboro, in northern Louisiana.

"I spent my youth barefooted with a cane pole," he said. "I gained quite an appreciation for art, nature and wild-life."

He warmed up the Lions with a joke about a Cajun from southern Louisiana and the Cajun's friend -- "a yankee who lived north of Shreveport."

They were going dove hunting when they came upon an ugly-looking fellow hunkered down along a fence row.

When birds flew by, the fellow flashed a weird smile skyward, bringing the birds to earth.

"How do you do that?" the amazed hunters asked.

"I just mean, ugly and grin 'em down," was his strange reply.

When the hunters asked if anyone else could hunt birds that way, the fellow said, "Yeah, my wife. But I don't like her to hunt, because she tears 'em up too bad."

Wells said he was raised by loving parents, L.E. and Audie Mae Wells, who instilled in him a work ethic that continues today.

"We grew up poor as you can imagine," he said. "My mother could pinch pennies with the best of them."

When he was 8 or 9, his mother gave him a 50-cent piece and told him to buy some stamps from the mailman.

Wells found the mailman in his car and went up to the window.

"I was tappin' the 50-cent piece on the car door when it fell between the window and door," he said. "I was devastated. Not only did I not get the stamps, but I had lost the 50-cent piece."

Wells said he gave his mom a sob story, even implying that it was the mailman's fault. Besides, he wouldn't even give Wells the stamps.

The more his mom got to thinking about it, the madder



(photo by John Eubanks)

Ronnie Wells addressed the Salado Lions Club Sept. 24.

she got. So, she went looking for the mailman, carrying a Phillips screwdriver to take apart the car door and find the 50-cent piece.

Fortunately (for the car, anyway), the mailman forked over the stamps to Wells' mother when he saw her mood.

"To this day, she thinks it was a scam, and that the car door is full of 50-cent pieces," Wells said.

He also told a humorous story about his Grandpa Smith, who always wore denim overalls and a safari hat, and "drove a '55 Chevy 'til the day he died."

Wells recalled a time when he and his mother and another friend rode with his grandpa in the Chevy to go fishing at Flat Creek.

When they got to the creek, Grandpa decided to drive across the mudhole. But the car got stuck, and each time Grandpa gunned the engine, Wells' mother would rise to the ceiling.

"I thought she was levitating," Wells said, laughing at the memory.

It seems that an eight-foot log, which had been used earlier to help loggers rescue a truck stuck in the mud, had lodged underneath Grandpa's car.

"Whenever he hit the gas, the log would come up through the floorboard and pin her and the seat against the ceiling," Wells said.

"That image is forever in my mind, her suspended on the ceiling. And my mother, bless her heart, didn't say a word."

Grandpa left the car where it sat, and told everyone to go fishing. A truck came along later and got the car unstuck.

Wells attended college at Louisiana Tech in Ruston, 24

miles from Jonesboro. He rode "a beat-up old school bus" that some enterprising fellow painted with a couple of buckets of red paint.

He would charge students 10 bucks a month for a round-trip to Ruston. The bus left before daylight and returned after dark.

Wells said the riders drew odd looks from their fellow students after getting off the decrepit bus. "I wasn't exactly a big man on campus," he said.

Wells said his claim to fame in college was that he had a class with Terry Bradshaw, who went on to football fame with the Pittsburgh Steelers.

"He didn't know me then and still don't," Wells said, laughing.

Wells told about an art class project in which the students tacked their paintings to the wall.

Wells was the first to tack his work on the board, so he was able to compare it with those who came after him.

He figured that his work "had blown away the others" until the professor jerked the tacks from the painting, which the professor kicked as it fell to the floor.

"Needless to say, I gathered he didn't like it," Wells said. Fortunately for the young artist's ego, the professor was critical of all the paintings. "He wanted to give everyone a full impact of his critique," Wells said.

After graduating in 1968 with a bachelor's degree in fine arts, Wells went to work as a medical illustrator at the M.D. Anderson cancer clinic in Houston.

But after four years there, he wanted to see if he could make

See Artist, Page 18A

## Happy Birthday Laura!



Love,  
Mom  
Dad  
& Tommy

Sept. 30, 1981

## CHECK IT OUT



A thoughtful way to honor a friend or loved one, living or deceased, or to celebrate a friend's birthday, anniversary or special event is by a gift to the Salado Public Library Memorial Gift Fund. Here are some facts about the fund:

The Library has book plates to go in books given as memorial gifts. The name of the person honored and the name of the donor can both go on the plate.

An acknowledgement card is sent to the family of the person honored telling them of the gift.

If desired, the donor may select the book to be purchased.

A memorial gift may be in any amount and each gift will add to the usefulness of your library.

Think how pleased a child or grandchild would discover a special book in the Library given in his or her honor!

### Salado Public Library

Main Street Salado Civic Center 947-9191  
Monday-Friday 1-5 PM Saturday 9 AM-12 PM

# Pro STEREO & TRUCK ACCESSORIES

Truck Accessories  
to fit all your needs

Clarion • Hi-Fonics • Orion  
• Pro Box • Fultron  
Window Tint

710 So. IH-35 Belton

254/939-5120

John Kirchmeier, Owner



An exciting selection of fine home accessories to make your "nest" a special place

Between First State Bank and The Salado Mansion on Salado's Main St.

LaJuan Shelton 254/947-3345

10-5pm Tues-Sat

**Bar-B-Q Family Pak Special!**

Your choice: 1 Lb. Beef or Sausage, or 1 whole Chicken; 3 Pints of Vegetables, Bread, Pickles, Onions & Sauces. Serves 4

**EVERY MONDAY & TUESDAY! Reg. \$12.95 \$10.95**

**Clem Mikeska's Bar-B-Q**

57th & Ave M., Temple, 774-5481

**PIDDLERS HILL SUPPLY**

"Your Friendly Country Hardware Store"

Pipes • Fittings • Tools • Bolts • Irrigation

Official Dealer **RANCH HAND EQUIPMENT**

817-939-8322 East Loop 121 Belton, TX Between I-35 & Little River Rd.

**PENNZOIL** Performance. Protection. Quality.™

**MINITMAN** 10 MINUTE OIL CHANGE SINCE 1978

SERVICES PROVIDED	ALL MAJOR BRANDS OIL AVAILABLE	SERVICE INCLUDES
<ul style="list-style-type: none"> <li>• Oil Changes</li> <li>• Transmission Services</li> <li>• Radiator Drain &amp; Refill</li> <li>• Fuel Injection Cleaning</li> <li>• State Inspection (Belton Only)</li> </ul>	We Accept • DIAMOND SHAMROCK • VISA MASTERCARD • American Express • Discover Card	<ul style="list-style-type: none"> <li>• Up To 5 Quarts Oil</li> <li>• New Oil Filter</li> <li>• Chassis Lube</li> <li>• Check &amp; Fill All Fluids</li> <li>• Inspect Belts, Hoses, Exhaust</li> </ul>

BELTON  
1702 NORTH MAIN - 933-0526  
HOURS: MON.-FRI. 8 A.M. - 5:30 P.M.  
SAT. 9 A.M. - 1 P.M., CLOSED SUN.

**Hill Country Cottage Gardens**

152 Blackberry Rd. Salado, TX 76571  
254-947-0416

Wed-Sat 10-6, Sun 11-5 Closed Mon & Tues

Antique Roses • Native Plants  
Perennials & Herbs  
Native Trees & Shrubs



# Artist

it on his own as an artist. With the support of wife Patricia -- "she supported me and hung in there with me" -- Wells set out to become a real artist.

His first show was at the Pritchard Gallery at the Galleria in Houston. Wells worked a month on it and couldn't wait for the big day to arrive.

When Wells got to the Galleria, he saw a long line of people waiting at the door of the gallery, he figured he would wait in line, too.

It seems that the store employees were waiting for Wells before they opened the door. Fortunately, one of them spotted him in line and let him in before the others.

Later, a woman admiring his art came up to him and said, "You must be the artist?"

"Yes, ma'am," Wells answered.

"You know why I know?" she asked.

"Why?"

"Because I've asked every man in here and they all said no, and you're the only one left."

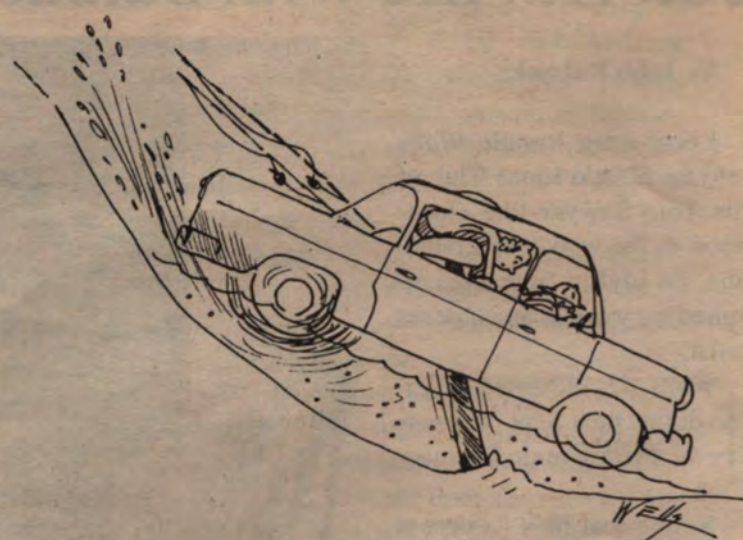


Illustration by Ronnie Wells.

"I guess I don't fit the mold of an artist," Wells told the Lions.

Wells said God has blessed him with the ability to paint and sculpt, and told a story he heard from a Baptist preacher about a banty rooster and a hen who would go through the same routine each day.

The rooster would fly to the top of a china berry tree, and the hen would attempt to do the same, only to reach the bottom limb each time.

One day the rooster asked the hen why she went through all the trouble of trying for the top limb, knowing she would fall well short of the mark.

"Just think where I would fall if I didn't aim for that top limb," the hen told him.

As Wells explained, "We all should strive for the top limb, and if we don't make it, we won't fall flat on our face. If our aspirations are not higher than the bottom limb, it doesn't leave us much leeway."

Asked by a Lion why he choose to live in Salado, Wells said he and Patricia decided they could live anywhere they wanted after the kids went to college.

While visiting Austin, Wells said someone told him, "If I were an artist I would live in Salado."

He found a place he liked -- the old post office on Main Street -- but the owners (the Robertson family) weren't ready to sell, so he opened a gallery in Georgetown instead.

When the place in Salado finally became available, he leased it and opened Wells Gallery, just south of the Stagecoach Inn restaurant.

"We've been pleased with it," Wells said, "and thankful for the support from the people in Salado."

Wells had several works of art on display for the Lions to view.

-- A sculpture of two mallards, which will be available in January through mail order from Danbury Mint.

-- A painting that will be auctioned in November in Austin, the proceeds of which will go to Ducks Unlimited.

-- A bronze sculpture of mourning doves.

-- A new print, "Heart of Texas," depicting a golf green in the shape of a heart. The print was commissioned by Ethel Jones and is available at her store, Lady's Tee Box, and at Wells Gallery.

**LIONS NOTES:** The next Lions speaker, on Oct. 8, will be Dave Hermann, executive chef at The Range restaurant.

## The Choppin' Block

\* Gift Crates \* Gourmet Items  
\* Beef Jerky \* Cured-Smoked Hams  
\* Cook Books & delightful decorations for your home

Central Texas' Finest Gourmet Shop  
**Open Daily**  
254/947-5562  
I-35, Exit 285 Salado

## Gaby's Mill Creek Catering

**We Provide the Food. You Provide the Fun.**

Want to host an event that your guests will be talking about for days? Let Gaby's Mill Creek Catering provide the food!

Whether you are serving hearty appetizers, a light lunch, a superb dinner, or decadent desserts, Chef Gaby will prepare food so good your guests won't stop talking about it! To complete your perfectly planned event, we can add the services of a waiter or bartender.

Delicious Food • Dependable Service • Affordable Price

Gaby's Mill Creek Catering  
**254/947-5141**

**BICKEL'S CONTRACTING AND PAINTING**

Remodeling Wallpapering Free Estimates  
Decking Reasonable Prices Quality Work

**Just give us a call!**

Ed Bickel OR Jeff Bickel  
(254)780-2256 (254)770-1007

# Sales & Services

## SERVICES:

**Trees, Shrubs & Landscaping, Pruning, Removal and Hauling.** Flower beds, general yard work, top soil. Major credit cards accepted. Call Victor Marek at 947-030324 Hr. Emergency Service  
TFNB  
**Storage Space in Salado** 8x12, 16X24, and up. Some drive-in doors. Call Salado Storage 947-5575

**ACREAGE MOWING**  
Any size, Fast service  
Call Ken 1-800-930-4707

**House Cleaning Done Reasonable**  
Call Debbie 939-7127  
Beeper # 718-9405

**Need Information? Meals on Wheels**  
Call Dick or Dorothy Westlake 947-0238

**WANTED TO BUY:** Gold, Silver, Coins, Currency, Diamonds, Hummel Plates, and Swarovski Crystal. Silver Eagle, Killeen Mall. Phone 1-254-690-2300

**Expert Alterations/tailoring**  
Call Hope 947-4773

**Small Jobs Needed:**  
We have tractor with shredder. Ditch Witch Trencher, compressor, sandblaster. We can do home repairs & light hauling. Jimmie and Nadine Gidley at 947-5579

**Power Washing, Houses, Buildings Wood, Brick, Stone, Siding etc.** Mold & Mildew removal, paint stripping and preparation. Environmentally safe 254-939-3009

**Pressure Wash:** Driveways, sidewalks, and patios. **Yards mowed,** reasonable rates. 947-3613

**House & Office Cleaning.** Experienced. Call Lisa or Nita 933-7805 or 778-7319  
**Painting - Interior & Exterior.** Free estimates. Call 947-8551

**Cleaning after hours.** Call Nadine, will clean offices, shops, count inventory. Call now 947-5579

## TREE TRIMMING

should not be left to amateurs. We observe correct procedures, disinfecting saws, painting cuts and have 12 years experience in this area. We are fully insured and give **FREE ESTIMATES.**

**Red & White Greenery**  
1-800-930-4707

**Anilco**  
Masonry & Fireplace Co., Inc.  
Masonry & All Types of Brick & Rockwork  
Fireplaces  
Build Clean Repair  
411 S. Main Belton  
254/939-0349

**Free Cash Grants!** College, Scholarships, Business, Medical bills. Never Repay. Toll Free 1-800-218-9000 EXT. G-9438 10/8

**Diabetics with Medicare or Insurance.** Get your Diabetic supplies mailed to your home. (Insulin dependent only) Call 1-800-337-4144 12/24p

**W.B. Ickes - 12 yard dump** will haul loam, sand, gravel or rock 512-746-5120 10/15p

**100% SAFE way to lose weight** and keep it off. All natural. No drugs. No side effects. No exercise. Call Leslie 254-947-9504 10/8p

**16 year old girl would like to babysit on Sat.** while you shop or run errands. Call 947-8246 or 947-0427 Ask for Rachel. 10/22p

**Tractor Work - Bucket, Boxblade, shredding.** Josh Elliot. 947-5936 pager 899-4572 10/29p

## Help Wanted:

**Salado Pottery is seeking representative for part-time** retail sales position. Must be professional, reliable, friendly and available some weekends. Bonus opportunities available. Please send resume' to Cindy Dale. P O Box 1055, Salado, TX 76571

**Home Typists, PC users** needed. \$45,000 income potential. Call 1-800-513-4343 Ext. B-4548 10/8p

**Telemarketer wanted: Will train.** Flexible hours from office or home. Parttime call Judy 939-3711 after 6 p.m. 947-9923 10/1p

**Needed babysitter for newborn** at our house begins in January. 947-8707. Need references. Ask for Karen or Bill.

**Need Secretary/Receptionist** for busy oil and gas business. Computer skills necessary. Proficient with Microsoft Word and

Excel needed. Competitive salary and medical benefits. Only qualified need apply. Mail resume to P.O. Box 1035, Salado 76571. attn Wanda. No phone calls please. 10/8p

## Pets & Livestock:

**Professional Poodle Grooming**  
In my home (TLC) Licensed Belton 254-939-0581 tfnb

## For Sale:

**Small piano with stool.** Good condition, great sounding. \$500 947-0705 10/8p

## Automobiles:

**Clean 1979 Dodge Utility Truck \$2,000 Firm** Call 947-3030 tfnb

**For Sale: 87' Dodge Colt 4** speed, Runs good. \$750 947-5492 10/8

**For Sale: 1964 MG with hard-top.** \$1200 947-5550 10/8

**Priced reduced on beautifully restored 1965 Mustang Coupe.** Must see to appreciate. \$5,995 254-947-5124

**1991 Allegro Bay 32 ft. Motor Home.** Low miles. Like new. Many amenities. \$29,950 Call 254-947-5124 10/15p

## Garage & Estate Sales:

**Garage Sale - Patio furniture, Ethan Allen bed frame & rug, household items, antiques, crafts, sat. Oct. 4 7-5 p.m.** Corner of Amity West and Brewer. (Hwy 2484) look for signs.

**Garage Sale - Household items, clothing, misc. Fri. Oct. 3 8 a.m. - 3 p.m. Sat. Oct. 4, 8 a.m. - noon.** I-35 Service Rd. Behind Auto Excellence. 10/1

**Salado Yard Sale 5 Family Variety.** Oct. 4 8 a.m.-4 p.m. FM 2268 east.

**KOUNTRY GIRLS CLEANING SERVICE**  
Residential & Commercial  
Insured & Bonded  
Servicing Central Texas

Rt. 1, Box 57 • Buckholts (SHARP), TX 76518  
512-446-6151

Barbara Graham Janice Wessels

## Classifieds work

To place your classified ad in the Salado Village Voice, fill out the form below and mail it with payment to: *Salado Village Voice, P.O. Box 587, Salado, TX 76571 or deliver to 213 Mill Creek Dr., #125.* First 10 words are \$2, 10 cents per word thereafter. Deadline is noon Monday for all classifieds.

\_\_\_\_\_

\_\_\_\_\_

\_\_\_\_\_

\_\_\_\_\_

\_\_\_\_\_

\_\_\_\_\_

\_\_\_\_\_

\_\_\_\_\_

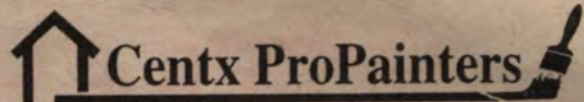
\_\_\_\_\_

\_\_\_\_\_

Cost of Ad: \_\_\_\_\_ Number of Runs: \_\_\_\_\_

Total cost: \_\_\_\_\_ Amount enclosed \_\_\_\_\_

Pager (817) 742-4238 Office (817) 939-2963



Specializing in Repainting

Serving the Cen-Tex Area WILLARD BENNETT

**947-5579**  
**Salado Electrical Service Company**  
Home & Business Repairs & Service  
Jimmie & Nadine Gidley

**BONNIE'S CLEANING SERVICE**  
has great service and makes it just the way you like it.  
Guaranteed to please.  
**939-8685**

*Sherry's In Salado*  
Specializing in elegant wedding and all occasion cakes.  
Catering from small dinner parties to receptions & informal gatherings.  
Sherry Bonnett  
**254/947-3932**

**CHICK LANDSCAPING**  
• Sod • Hydromulching  
• Dirt Work • Shrubs  
**FREE ESTIMATES**  
Darin Chick  
**(254) 947-9150**  
2497 Royal Street  
Salado, TX 75671

**Window Cleaning**  
Specializing in Residential Exterior Window Cleaning  
For Free Estimate, Call  
**947-8758**

**Sprinkler Service & Repair**  
**Lawn Mowing & Trimming**  
FREE ESTIMATES  
Jerry Simpson  
**512.746.2609**  
(Local Call)

**Center Point Air Conditioning**  
Meeting all your air conditioning and heating needs  
Owner Fred Newbury, Jr.  
**254/939-8713**  
Sales, Service & Installation  
Licensed & Insured  
TACL A 2124 C

**Time Out Kids & handcrafted items** .....  
6 am til midnight  
at CountryBoys Chevron....  
I-35 access/Salado

**Salado Plumbing**  
We Are Ready  
Repairs  
New Home Construction  
**947-5800**

# What's New at The Salado Mansion?

**Live Music  
Every Night  
on our Patio**

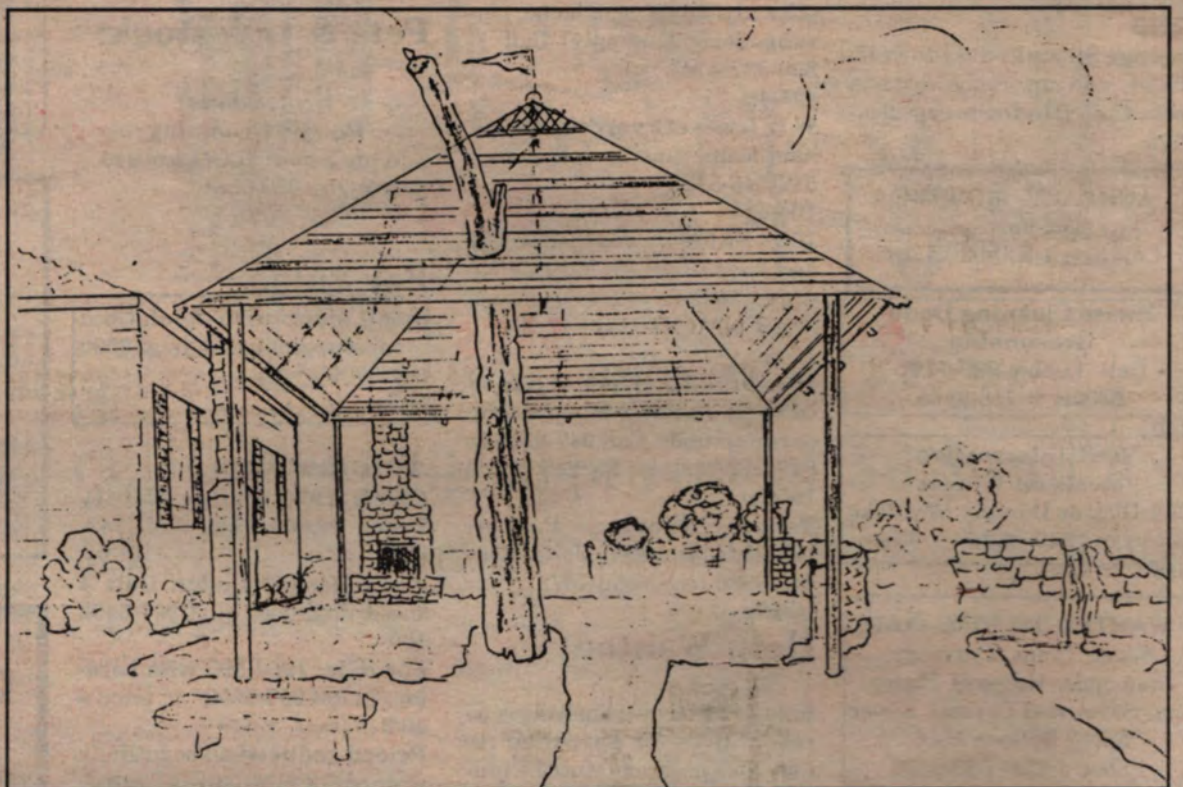
(Mother Nature & Musician's Union Permitting)

The Mansion Club will be open serving adult beverages from 10 p.m. until midnight on Fridays & Saturdays featuring live music on the Patio.

Nashville Session Guitarist John Rich, of Oak Ridge Boys, Elvis Presley and Tanya Tucker Fame is Now Appearing

Fred Fuller, the Singing Cowboy, will perform Classic Western songs and Cowboy poetry

Open 7 Days a week for Lunch & Dinner • **254/947-5157**



*Serving Classic Mexican and Southwestern Cuisine at Popular Prices*

**Main Street • Salado**

In The Historic Old Tyler House Built in 1857



**Come Find Out  
Why Your  
Neighbors Are  
Our Customers!**

**TEMPLE**  
LINCOLN - MERCURY  
Jeep  Eagle



**Five Star Award  
for Excellence**

We've earned this exclusive honor by consistently exceeding our Jeep Eagle customer's expectations in sales and service

**1995 - 1996**  
Awarded exclusively to Lincoln-Mercury dealers achieving High Honor of Customer Satisfaction

Get a gift certificate for a free phone from AT&T Wireless Services with your new car purchase. New activation with a one-year service commitment required to receive free phone. Activation subject to prior credit approval. Cellular service provided by AT&T Wireless Service.

I-35 Exit 302  
Between Nugent & Adams  
800-460-9077  
254-773-9077  
Hours: 8-7 M-F; 9-5 SAT



## WE'RE CLOSING OUT THE MODEL YEAR IN SEPTEMBER!!

**WE'RE SELLING NEW 98 GRAND CHEROKEES  
LIKE A 97 CLOSEOUT SALE!!**



MSRP	\$27,230
TX DISC	-\$500
JEOP DISC	-\$700
OUR DISC	-\$1,049
GK+ REBATE	-\$1,000
<b>Bottom Line</b>	<b>\$23,981</b>

+TT&L

**NEW '97 CHEROKEE SE's & SPORTS**

ONLY **\$319** +TT+L DOWN & **\$319** A MONTH

TOTAL SAVINGS  
OF **\$2906**



CK3398, Sport, 36Mo/36,000 Mile Gold Key Plus. MSRP Was \$22,905, PEP Disc. \$500, FREE A/C Disc. \$850, Sell for \$19,999 +TT&L + \$1763.99 Cash Down, 10.05%WAC, Final Optional is \$13,513.

**New '97 MERCURY TRACERS**

ONLY **\$199** A MONTH



**\$1000  
Rebate**

TR3279, MSRP was \$11,995+TT&L, Minus \$1000 Rebate, 60 Month at 10.9% APR WAC. Total down is \$1,821 +TT&L.

**NEW '97 DEMO GRAND MARQUIS**

FACT DISC	\$2,500
REBATE	\$1,500
DEMO DISC	\$1,311

TOTAL SAVINGS  
**\$5,311**



M3187



# SALADO *Visitor's Guide*

October 1, 1997 Salado Village Voice, Page 1B

## Jarrell resident recalls brushes with death as World War II POW

by John Eubanks

Herman Schwausch of Jarrell spent three-and-a-half years as a prisoner of war during World War II, surviving the Bataan death march and, later, 39 days in an overcrowded hold of a Japanese ship traversing the Pacific while dodging American submarines.

Schwausch, 84, talked about his days as a POW during a recent visit to his rural home west of Jarrell. It is a home he built in 1957, one in which he sought shelter when a deadly tornado skimmed past it in May.

Brushes with death were the norm for Schwausch and his fellow prisoners, from their capture in April 1942, until their liberation in September 1945.

Many died on the 70-mile death march, and many more perished in the torturous prison camps.

"The thing that really bothers me -- not exactly bothers me, but you know ... -- is that when we got captured, the Japs starved us to death and worked us to death. That's what they had in mind," he said. "If the Americans had done what they (the Japanese) had done (to us), they would have known the score, but we don't do it that way."

Schwausch remembers the Japanese commander of the POW camp telling the prisoners, through an interpreter, "You killed 285,000 of my men and you are going to pay for it!"

"That made us think that we were finished," Schwausch said.

There was something else the Japanese commander said that made Schwausch shake his head.

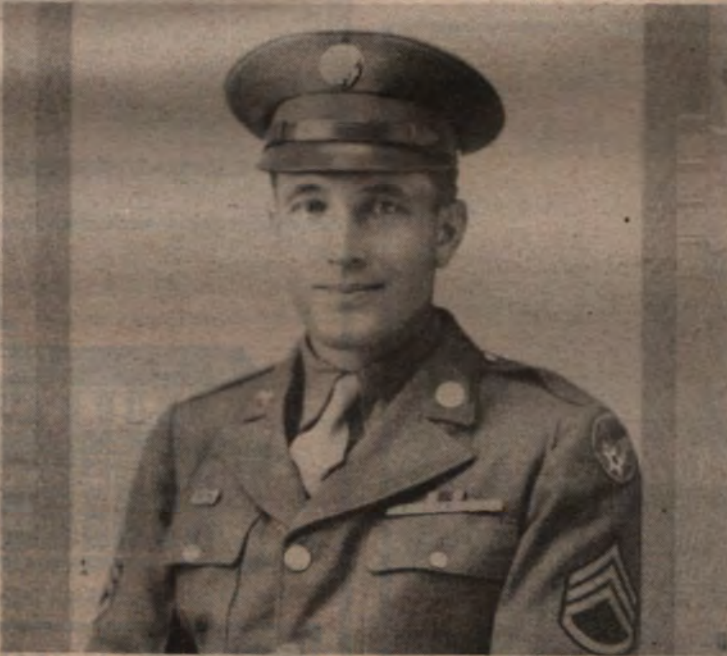
"The yellow race will fight the white race for generation to generation, until the white race will become extinct."

In the book "Death March" by Donald Knox, there's a photo of American troops walking down a road. Schwausch said he's the slim-built soldier wearing the new campaign hat.

"It was the only one that would fit me," he said.



Herman Schwausch displays his Army Air Corps uniform top at his Jarrell home. (photo by John Eubanks)



Staff Sergeant Herman Schwausch in his military uniform.

Schwausch even remembers the Japanese photographer who took the photo, as well as another photographer who is seen in the photo.

It was so hot during the march that some crayons Schwausch had packed away "ran all different colors down my field pack."

This was not what Schwausch had in mind when he joined the Army in mid-1941 at the age of 28. He had been drafted earlier in the year and given two weeks to sell his service station in Round Rock. But when the Army failed to summon him, he enlisted in

June. After some training, he was shipped to the Philippine island of Luzon in October 1941. Two months later, the U.S. entered the war against Japan after its Dec. 7 attack on Pearl Harbor.

That same day, the Japanese began systematic bombing of airfields and major military installations on the Philippines before landing on the islands.

Most of the defending troops were deployed around the Philippine capital of Manila: 19,000 Americans,

See POW, Page 2B

RAIKE BEARS

254/947-1010

Salado Antique Mall  
N. Main St.

Salado POTTERY

NEXT TO STAGECOACH INN

Handcrafted Stoneware  
by Jim Dale

OPEN DAILY (254) 947-5935

Morning Glory Farm

display garden & shop nestled on the grounds of a 100 year old farmhouse  
dried flowers • art • classes • tea  
antiques • painted furniture • herbs  
• custom work  
West Amity Rd. Box 833  
Salado, TX 76571  
Sandy Johnston  
254-947-5673

Open Thur-Sat 1-5  
Sun 1-5  
Mon-Tue/Wed by appointment or by chance

THE GATHERING PLACE

at Salado Civic Square  
Gourmet Coffee  
Muffins & Bagels  
Mon-Fri 6 am-9 pm  
Sat 6am-10pm & Sun 6 am-10 pm  
254/947-4749

Browning's Courtyard Cafe

Featuring Daily Lunch Specials  
Soups & Salads  
Classic Sandwiches  
on Fresh baked Bread  
Homemade Desserts & Cookies  
Catering to Your Specifications  
Carry Out 947-8666  
#4 Salado Square  
Main St. Salado

**The Chicken Ranch**  
 505 College Hill  
 254/947-3455



Offering a unique collection for the serious & not-so-serious chicken collector.  
 Fri-Sat-Sun 11am-6pm

## Salado library sets Fall Fun

The Salado Public Library will present Fall Fun Storytime-Plus for 3-5 year-olds 10-11 a.m. Oct. 15. Parents are invited to stay.

## POW — FROM Page 1B

12,000 Philippine scouts and 100,000 of the newly raised and half-trained Army of the Philippines.

But Manila eventually fell to the Japanese on Jan. 2, 1942. Then on Feb. 22, Gen. Douglas MacArthur turned over his command to Lt. Gen. Jonathan Wainwright and departed the islands. It was this departure that evoked the famous line, "I shall return."

The Bataan peninsula eventually fell to the Japanese in early April, and on April 10, American and Filipino soldiers began the long death march to Camp O'Donnell near Cabanatuan.

"We didn't have anything to eat before we were captured," Schwausch said. "MacArthur cut us down to one-third rations. We thought we were going to get the necessary food to live (after being captured), but that wasn't so."

"We got sicker and skinnier and weaker, and had to work in spite of it all. We got weaker and weaker and people dropped like flies."

A year or so after being cap-

tured, Schwausch said the prisoners got "a little more rice and green soup, nothing else. No grease, no meat. When you go without grease, your skin starts getting scaly. When you don't get any calcium -- milk and such -- your fingernails start coming out in skips."

A couple of months after the rations were increased, the prisoners were lined up to be weighed. Schwausch will never forget the soldier who was two ahead of him, nothing more than skin and bones. Schwausch couldn't believe anyone so skinny could still be alive, much less walking on his own power.

The man weighed 35 pounds.

"You can imagine what that man looked like," Schwausch said. "You got used to it there, but if you saw him walk in now, it would scare you to look at him. A skeleton with skin."

Asked if the man survived his imprisonment, Schwausch said, "I don't know. I would say he did."

Schwausch, who weighed *See POW, Page 3B*



*Christopher Radko*  
**WHEN ONLY**  
**THE BEST WILL DO**

Each Christmas season, world-renowned ornament designer Christopher Radko blends Christmas tradition with innovation. Once again, Christopher's highly collectable designs have resulted in a truly stunning assortment of museum quality glass ornaments and garlands. Come in to see our whimsical array of Christopher Radko's wonderful 1997 Christmas collection, and make you Christmas more magical than ever.

Meet John Eaton  
 from Christopher Radko  
 10 a.m.-5 p.m. Oct. 10  
 10 a.m.-3 p.m. Oct. 11

**THE Christmas Shop**  
 A Christopher Radko Rising Star Store

Pace Park Dr. Salado  
 In the Green House  
 on the Creek  
**Open 10am-5pm**  
 254/947-5561



One Royal 947-5555

*Salado Galleries*  
 For Those of Discriminating Taste

First Edition **Waterford**  
 Hand-Blown Christmas Ornaments  
**Also**  
 NEW Margaret Furlong Angels



#1 Main Street Salado, Texas 254-947-5110



**Heirlooms** A 2-Story Gallery of Gifts, Fine Art and Classic Antiques

Blending the Past with the Present  
 Howard Miller Clocks & Curios  
 Royal Doulton Collectibles  
 Gourmet Coffee  
 Candles • Potpourri  
 Apparel • Jewelry  
 Much more!

(254) 947-0336 • 230 N. Main St. Salado  
 Open Daily 10 a.m.-6 p.m.

# POW

FROM Page 2B

80 pounds on a six-foot tall frame, was so skinny himself that he could put his thumb and middle finger around his leg above the knee.

The prisoners, who wore nothing more than "a g-string and a straw hat -- and no shoes," worked at a variety of details.

"We had to build airfields, work in coal mines and smelters," Schwausch said. "Men were in all kinds of places."

Schwausch was on a detail to collect wood when a miscommunication between him and a guard nearly got him shot.

Schwausch explained that the American hand gestures "to come here" and "go away" were opposite to the Japanese. When Schwausch thought a guard was signaling him to leave, he turned his back and began walking away.

Thinking Schwausch was disobeying an order, the guard cocked his rifle and aimed it at Schwausch's back.

When Schwausch heard the rifle being cocked, he turned around to see it aimed at him.

"If you're gonna shoot me," Schwausch figured, "I'm gonna watch you."

But the guard lowered his weapon. Only later did he find out that the guards would not shoot prisoners if they were facing one another.

"I didn't know that," Schwausch said. "I did the right thing without knowing it."

One of the happiest days of his captivity happened to be one in which he was sick with fever. But his spirits would soon be lifted.

"I had malaria fever every 30 days just as regular as could be," he said. "If you had over 102 fever, you could stay in camp and go on sick call. That day I had a temperature of 105. That was 8 o'clock in the morning."

It was Sept. 21, 1944. Until then, no American planes had been seen in the sky at Schwausch's prison camp across the bay from Manila.

Japanese aircraft on training missions were a common sight, but there was something different about these planes. They didn't have the orange ball painted on them like the Japanese planes did.

Lord, could they be ... yes!

American fighter planes, 16 in one formation, were headed in the direction of a Japanese twin-engine bomber coming from the opposite way.

"Four of the 16 peeled off and the first one hit the bomber -- I saw the flash -- and that two-motor bomber just disintegrated," Schwausch vividly recalled.

He distinctly remembers an English-speaking Japanese guard, watching the scene unfold and thinking it was a drill, say, "Ummm, pretty good."

After that, Schwausch said, Japanese planes regularly had American fighters on their tail.

"That's about the time it got pretty good around there," Schwausch recalled, smiling.

Two weeks later, on Oct. 4, all able-bodied prisoners were ordered on to ships for a trip to Japan. But American subs were patrolling the waters

around Japan, forcing Schwausch's ship to Hong

Kong, then to Formosa (now Taiwan), back to Hong Kong, then to Formosa again, and finally to Japan.

The first ship he was on had two holds, one in front, the other in back. The men were in extremely cramped quarters.

"We sat on coal, 500 prisoners in each hold," Schwausch said. "You didn't have room to stretch. Each man had 12 inches by 18 inches to park on. We were on that ship for 39 days. We lost 39 guys."

They finally arrived in Japan in January 1945. They were first taken to Kobe, where he saw the city burn from bombings by American planes. They were then transferred to a railroad switch yard, where they were at in August 1945, when the second atomic bomb was dropped on Japan, ending the war.

And the guards' reaction to Schwausch's ship to Hong

See POW, Page 7B



**Janet's Unique Boutique  
& Food Court**

*"Specializing in Ladies Clothing  
and Delicious Treats"*



**209 S. Main St. Salado, TX**  
Janet B. Collins (254)947-1700



Accents  
OF SALADO

Unique Gifts for  
Home and Garden

Sterling Silver Jewelry  
Style... Selection... Savings.

101 N. Main St. at Pace Park Dr.  
947-5908 Open Daily



Just quiet class

The Rose Mansion

Bed & Breakfast  
One Rose Way, Salado  
254-947-8200 or 800-948-1004



The  
Dusty Rose  
"Home of Santas  
Unlimited"

Large selection of hand-painted  
Santas by Karen Lee  
Open Daily  
110 Royal St. 947-9215



Special Touches

Handmade Porcelain Dolls  
by Joyce and Vance Spangler

Art Glass, China & Crystal

Wishing Well

Antiques and Things  
300 Baines St., Salado (254) 947-1997

Espresso & Cappuccino Bar



- Espresso
- Cappuccino
- Iced Cappuccino
- Latte
- Cappuccino Shakes

Sample our coffee of the day

Browse our fine selection of coffee beans

Strawberry Patch

Creekside Center  
Main St. • Salado  
Open Daily  
947-9955

The only coffee shop you'll ever really need



Brighton Treasures have Arrived!

Cia

A Unique Ladies Boutique

No. 3 Salado Square on Main St.  
Salado, Texas

254-947-0322 Open Daily Visa/MC/AMEX/Discover

Try on new looks for fall from designers you love. Linger and enjoy scents and lotions to delight. Browse through our sale rack with reductions that say ... Take Me Home! Come in and see Brighton Treasures, the newest personalized jewelry collection from Brighton, exclusively at Cia.

Visit Cia, where fashion is classic, affordable and fun!

## Postmenopausal women 60-79 needed for study in Women's Health Initiative

Postmenopausal women ages 60 to 79 are needed to participate in the Women's Health Initiative (WHI) study at Baylor College of Medicine in Houston.

The WHI, sponsored by the National Institutes of Health,

will look at the effects of hormone replacement therapy, a low-fat diet, and calcium and vitamin D supplements on heart disease, cancer and bone fractures.

The health of more than 5,000 women will be followed

for an average of nine years. Women at least 65 years of age in the WHI hormone program may join the WHI memory study which will look at the effects of hormones on preventing or delaying the onset of Alzheimer's disease.

Qualified participants will receive study medication and physical exams at no cost. Volunteers must be past menopause either naturally or surgically.

For more information or to volunteer, call (713) 798-8686 or 1-800-54-WOMEN.

**Little Tin Hutch**  
Antiques, Collectibles & Specialty Gifts  
254-947-5537  
550 Main St.  
Salado, TX 76571  
(Next to Salado Antique Mall)

**The VILLAGE POTTER**  
From Our Hands to Yours



Main St. Salado  
(254) 947-0281  
1-800-948-9481  
Fax (254) 947-0709

A family owned and operated business producing High Quality Stoneware Pottery

**Horsefeathers**  
Antiques & Gifts  
#2 Rock Creek Dr. 254/947-3203

**SALADO CIGAR COMPANY**  
(254) 947-0281  
OPEN 7 DAYS A WEEK  
FAX (254) 947-0709



Located in the Same Building as the Village Potter on Main Street. Featuring High Quality Hand-Made Cigars From Around the World.

**Lady's Tee Box**




presents the new **Lady Fairway Golf Shoe**  
**The "Whitworth"**  
featuring full grain leather upper, soft waterproof leather lining and classic leather outsole. Endorsed by Kathy Whitworth.

**Lady Fairway**  
227 N. Main St. 254/947-5597  
In the heart of downtown Salado!!

**Deadline for news releases & display ads is 5 p.m. Friday Classifieds by Noon Monday 947-5321**

**Halley House**  
bed & breakfast  
Built 1860

Beautiful historic setting on Salado's Main Street  
Spacious Gathering Room for Special Occasions  
7 Individual Rooms  
Call 947-1000



**Peddler's Alley**  
5,000 sq. ft. of antiques, collectables & gift items in a unique setting  
Located off Royal St. behind Central Texas Area Museum  
254/947-9722  
Tues.-Sat. 10am-5pm  
Sunday 1-5pm

Antiques Antiques

**ROYAL EMPORIUM of Salado**  
One Royal • Salado • 254/947-5718  
WE NOW HAVE THE FINE FLAVORED COFFEES formerly found at Seasons of Salado  
Also  
Elegant Mahogany, Walnut & Cherry Glassware & China  
Caspari Notes & Napkins • Blenko Water Pitchers  
Art Interiors Gifts

**Village Boutique**  
Collections & Creations



22 N. Main St. Salado  
254/947-9100  
Mon-Sat 10-5, Sun 1-5

## Early Day tractor show rumbles in Temple

The Texas Early Days tractor and Engine Association Fall show will be held Oct. 3-5 at 1717 Eberhardt road (take Nugent exit West and right on Eberhardt).

Admission is \$3 for adults with children under 12 free.

This year marks the 26th anniversary for the annual show, held the first weekend in October. Donations of large exhibits and buildings are being added. Plans for a working cotton gin, sorghum mill, saw mill, and blacksmith shop are in progress. Demonstrations including corn grinding, sheep shearing, ice cream making, and an antique tractor pull will take place this year throughout the day. A tractor parade will showcase rare models, and hay rides throughout the grounds provide fun accessibility. Over 250 tractors, 300 small engines, and 8,000 people were in attendance at last year's show. The highlighted tractor and engine manufacturer for the 1997 show will be John Deere.

New additions this year include a tractor display building, old shotgun style house, and several large rare engines

In 1971, three men, who

loved their old tractors, sat down and decided they would put on a show. The equipment stubbornly refused to run and the show ended. Later that same year the three began plans for the organization the "Texas Early Days Tractor and Gas Engine Association". In order to become a part of the national organization, 10 members were needed. That year, Duncan Seawright of Meridian, Dale Munday, of Temple, and Ulas Jones of Waco, submitted 13 names, paying dues of 50 cents. With

"more already in the cemetery than not", they became the 19th club in the nation, and the only one south of Kansas! By the second show, the club had grown to over 50 members, and in Meridian in 1973, there were over 100.

Since then the club has grown to over 500 members with many times that number in pieces of "old iron". Their purpose is to preserve the farming equipment of our forefathers and to educate others on our history.

As the club has grown, so have their collections. For nearly 10 years, annual Spring

and Fall shows were held in Meridian, Texas. Spiegleville became their next show site in a leased field with no electricity or conveniences.

In 1989 a land search committee scoured the state for a permanent home. After months of negotiations and a club vote, Temple was selected overwhelmingly. The proximity to I-35, ample hotels and restaurants, along with a 20 year lease, made the 48 acre Eberhardt Road site too good to pass up.

For more information call: Temple Convention and Visitors Bureau; (254)298-5720.



The Legend of Catfish & Little Bream  
Children's book available for purchase for \$17.95

### Wells Gallery

• Limited Edition Prints • Bronze Sculptures • Original Paintings  
Next door to Stagecoach Inn dining room  
254/947-0311

THE TABRA COLLECTION  
**Tabra**  
Exotic... Bold...  
Empowering

Jewelry artist Tabra will join us in our gallery October 11-12 to unveil a beautiful new collection

**GREGORY'S**  
An American Crafts Gallery

401 S. Main St.  
Shady Villa Salado, TX 76571  
(254) 947-5703 (800) 473-5703

**Bramblely Hedge**  
A Fine Country Inn

Carol Anne Hanks  
1530 FM 2268 (Holland Rd.)  
1 mile east of Main St. Salado  
254/947-1914

The Historic  
**STAGECOACH INN**

**Superb Dining  
Delightful Motel**

Voted #1 by Texas Highways

**Salado, Texas  
254/947-5111**

**The Windberg GALLERY**

Featuring original paintings, limited edition prints and other fine collectables by the favorite artist of Texas, Dalhart Windberg.

**Meet The Artist  
December 5, during  
the Christmas Stroll**

**At The Colony  
Salado**

**229 N. Main St.  
254.947.3300**

**SALADO HAUS**  
Antiques • Gifts • Etc

*A Fenton Showcase Dealer*  
Fine Gifts, Collectibles & Antiques

Old Mill Plaza at corner of Pace Park Rd. & Main St.  
Salado, TX 76571 Open Daily (254) 947-1868



Bunkhouse (located behind Main House)

**Country Place**  
Bed & Breakfast

Exit 283, from I-35 • East on FM 2268 for 2.5 miles  
Reservations 254/947-9683

Bob & Elinor Tope, Owners/Innkeepers  
RURAL CENTRAL TEXAS AT ITS BEST

*Spring House Antiques*

A shopping experience  
of antique glass, furniture,  
gifts & decorative accents

Royal St. & College St.  
Salado 254-947-0747

**Antiques  
Urns & Ferns**

Royal Street Commons, Suite D  
Salado, Texas 76571  
254-947-5827

Antiques • Florals • Gifts  
necessities & nonsense



**MY HIDING PLACE**  
THE SPA RETREAT  
BODY - MIND - SOUL  
Salado's only Full-Service  
Barber • Beauty • Day Spa

- Latest Fashions In Hair Styling  
Men • Women • Children
- Advanced Training In Skin Care  
Facials • Complete Body Wraps  
Pedicures • Manicures
- Wedding Consultations  
Private Bridal Parties
- "Queen for a Day" Specials
- Aromatherapy Provided  
With All Services

**254-947-HIDE**  
Royal St Commons  
Salado TX



*Cinderella &  
her Prince*

*We are proud to present  
the Madame Alexander  
Classics Collection*

**Sweet  
Nut Things**

#4 Shady Villa • Salado • 254-947-8088  
Mon-Sat 10-5, Sun 12-5

## Study label before giving fat-free foods to children

Study the label carefully before giving children "fat-free" offerings. In some cases, even when the dietary fat has been reduced, the serving size may have a considerable amount of calories. Children may tend to eat more servings, causing them to gain more weight.

Fruits and vegetables are good fat-free foods. Products like low-fat yogurt and skim and 2 percent milk are also good.

However, children need fat in their diets, especially during growth spurts. The energy fat provides them helps them maintain normal bodily functions and supports the increased growth in muscle, skin, and Dietary fats essential fatty acids that are necessary for brain development.

Based on present knowledge, about 30 percent of a child's caloric intake should come from fat. Fat helps the body absorb fat-soluble vitamins like A, D, and E. Some fat-free offerings may not be as balanced in these vitamins.




**The Royal Salamander**  
Opening Soon

The Kings Arbor Cafe  
and  
Windberg Galleries

at the Colony

221 N. Main  
Salado  
Open Daily 947-1772



**Red Barn  
Antique Center**  
Exclusively Antiques

A collection of professional  
dealers featuring fine antiques  
as well as quality antique  
accent pieces.

Royal Street Commons  
2 blocks east of Stagecoach  
Daily 10-5 947-1050



Inn on the Creek • Reue and Holland House  
Giles-Kindred House • Sally's & Osage Cottage  
Center Circle & Royal Streets  
947-5554




**"Salado's only full-service Bed & Breakfast Inn & Restaurant"**

- ◆ 20 Guest Rooms w/ private baths
- ◆ Elegant surroundings for private affairs
- ◆ Facilities for business retreats
- ◆ Candlelight dining in an elegant atmosphere overlooking Salado Creek

**This Weekend's Featured Menu**  
Baked Goat Cheese w/ Mixed Greens  
Steak au Poivre  
Herbed Scalloped Tomatoes  
Broccoli w/ Lemon Butter  
Vanilla Scented Pear Strudel w/  
Walnuts & Chocolate Sauce  
Please call for reservations!

**Step into our world...  
Savor the experience  
for a lifetime!**

the war's end?

"The Japanese said we didn't have to work anymore because they needed the tools in a different place," Schwausch said.

In the month's time from the surrender to the liberation, U.S. B-29s dropped food in two 50-gallon drums welded together.

"We ate day and night," he said. "There were 400 of us prisoners, and in 30 days the average weight gain was 50 pounds. I mean to tell you, we were eating and having fun."

A small liberation force of American soldiers took over the camp, and the Japanese guards surrendered. Many of the captors wanted to give their possessions to the Americans, including swords worn by the officers.

Schwausch's three-and-a-half year ordeal had finally ended. His religious faith -- he's a Missouri Lutheran -- obviously helped him through it.

"You didn't have that, you were in bad shape. A Missouri Lutheran knows the score," he said.

"There were Japanese who were Christians, I don't know what kind. One camp commander was a Christian. You could tell. Before we left there, he said, 'God be with you.'"

Humor was also a necessary ingredient. There were few light moments, but one in particular occurred when the prisoners taught one of their captors to say, "I am a son of a (bleep), you are a big shot!"

Herman came home by ship, although some ex-POWs were initially sent home by plane. But that changed after a curious soldier turned a handle on a plane -- opening the bomb bay door and sending two men to their death over the sea.

Schwausch returned to his native Williamson County in time to attend his brother's wedding in November 1945. It was there that he met his wife, Irene, an Army nurse. They were married a week later.

Schwausch, a staff sergeant, was discharged from the Army on June 29, 1946, after five years and 13 days of service.

That same year he bought the lot on which he built his house. He lives there alone now, but has neighbors who look after him.

It was one of those neighbors who warned him about the May 27 tornado that killed 27 Jarrell residents.

"It came right along here, next to my house," Schwausch said. "My neighbor called and said, 'Get in the basement, there's a tornado coming right through your home.' The wind wasn't blowing much then, but I closed one door and then the

other. If I had been out that way I would have seen it."

Schwausch opened the basement door, but never went in.

"Then the wind started blowing and things started hitting the house. It took that whole area (east of his place). There were between 40 and 50 houses and it just wiped the whole works clean."

Schwausch has obviously experienced his share of death and destruction. His philosophy on life is based on his faith in God.

"The devil is more powerful than any human being," he said, "unless you have Jesus to protect you."



## Old Town Salado

### Fall Fashions

- City Girl
- On The Verge
- Starfire
- Susan Bristol
- Crystal Handwovens



## The Store

in Old Town Salado

Main St. across from the Salado Civic Center

Open Daily (254) 947-9000

NORTH MAIN  
SALADO, TEXAS (254) 947-9110

**ROSE COTTAGE**  
*Gifts & Antiques*

TEA SETS • CHILDREN'S BOOKS • PRINTS  
• BEDROOM SUITES • ARMOIRES • STUFFED ANIMALS • COLLECTIBLES

AND THE  
**PINK ROSE**  
*Tearoom*

DELICIOUS FOOD & DESSERTS • RESERVATIONS NOT REQUIRED  
HOURS 10AM-5PM  
CLOSED TUESDAYS

*Angelic Herbs*  
Guardian of your good health  
#10 Old Town Salado (254) 947-1909

Our anniversary gift to you!  
**FREE Chair Massages**  
All Day this Saturday

**REMINDER!**

**FIRST ANNIVERSARY CELEBRATION!!**      **OPEN HOUSE**  
Thursday, Oct. 2  
5:30 - 8:30 pm

*Angelic Herbs*  
Guardian of your good health  
#10 Old Town Salado • 254-947-1909

**"Texas Ranch Furniture & Home Accents"**



A furniture showroom that's just southwest of the usual.

JUST OFF IH-35 BETWEEN EXITS 284 & 285  
Salado, Texas  
#3 Old Town Salado (254) 947-4479

**Cathy's Boardwalk Cafe**  
in Old Town Salado  
254-947-8162

**Friday, October 3**  
**Cajun Buffet**  
**\$8.95 per person**  
**\$3.95 children under 10**

**OPEN**  
**MONDAY-SATURDAY**  
**FOR LUNCH**  
**DAILY SPECIALS**  
**AVAILABLE**

**OPEN EXTENDED HOURS FOR EVENING TAKEOUT MONDAY THROUGH THURSDAY BEGINNING OCTOBER 6 OFFERING DINNER ENTREES AND HOMEMADE BREAD & DESSERTS**

**Lunch Menu Featuring:**  
Homemade Bread  
Garden Fresh Salad Bar  
Deli-Style Sandwiches  
Charbroiled Hamburgers  
Homestyle Entrees  
Homemade Desserts

*The Gallery*  
in Old Town Salado

Texas Artists  
George Boutwell  
B. Herd  
Larry Dyke  
& others

**#16 Old Town**  
**254-947-9000**

**MJ's**  
**COUNTRY CORNER**

OLD TOWN SALADO #6  
254/947-8885

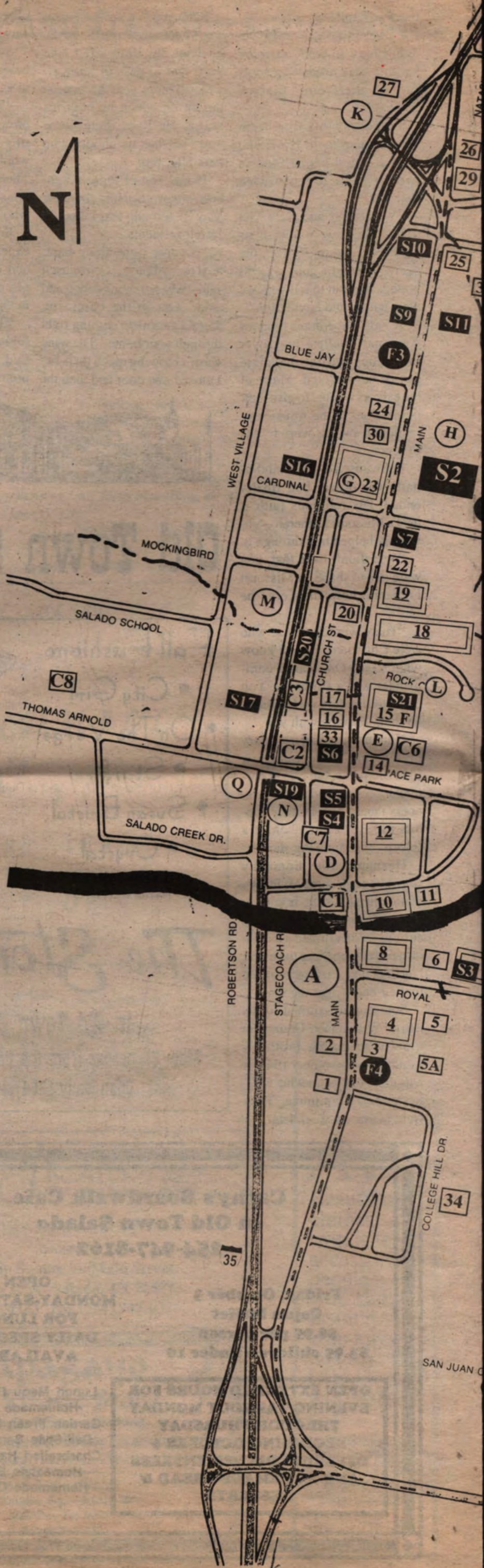
HANDMADE CRAFTS  
•  
GIFTS & GREETING CARDS  
•  
FORMERLY FENCE FURNITURE  
CUSTOM ORDERS AVAILABLE  
•  
SAVANNAH MIXES  
•  
DESIGNS IN WAX CANDLES

**Shopping in Salado**

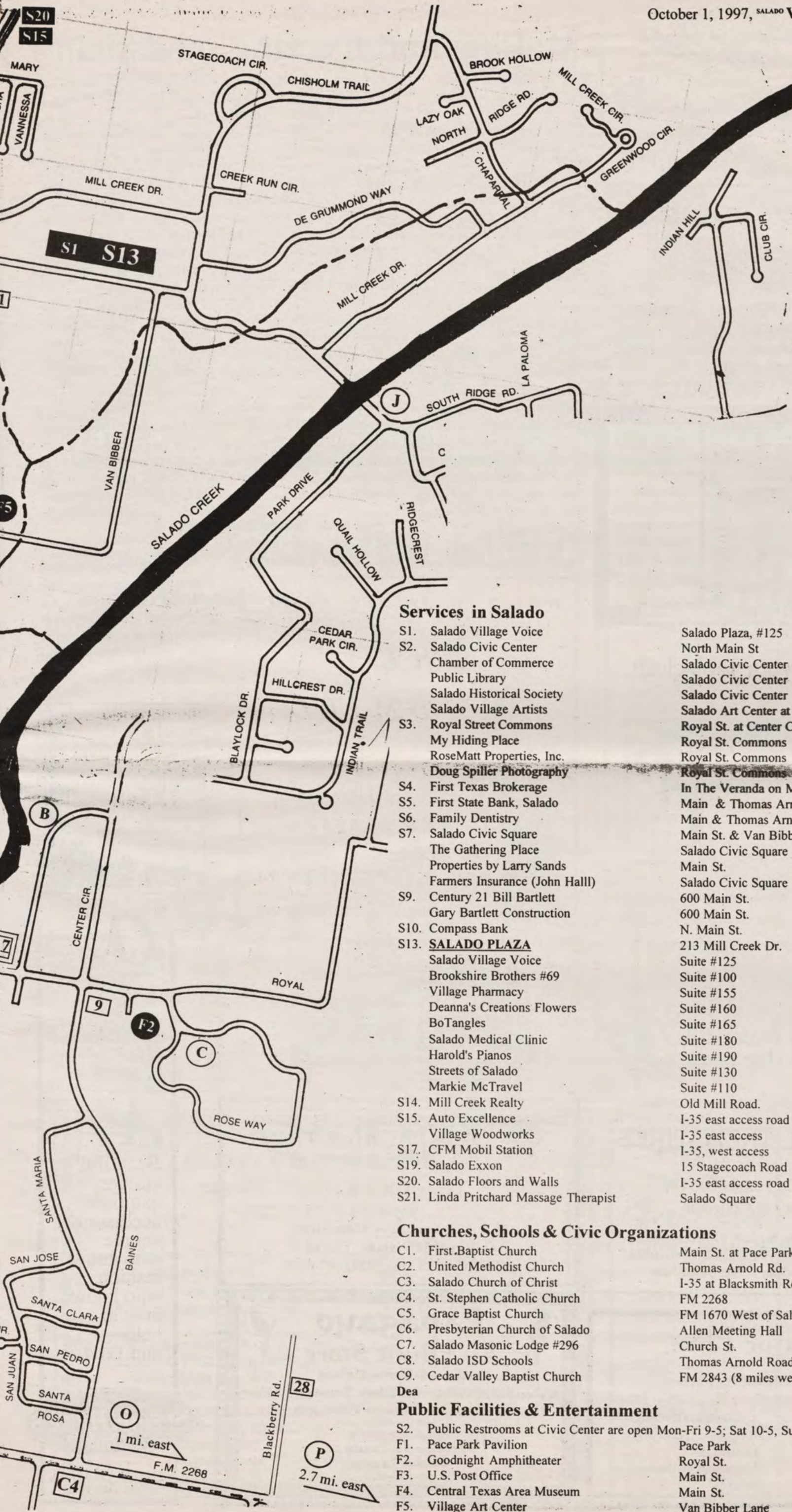
- |                                      |                                     |              |
|--------------------------------------|-------------------------------------|--------------|
| 1. Wells Gallery                     | Next to Stagecoach Inn              | 254/947-0311 |
| 2. Salado Pottery                    | Next to Stagecoach Inn              | 254/947-5935 |
| 3. Salado Galleries                  | Main Street                         | 254/947-5110 |
| 4. <b>SHADY VILLA</b>                | Main St and Royal                   |              |
| Gregory's                            | Shady Villa on Main St.             | 254/947-5703 |
| Salado Country Antiques              | Shady Villa on Main St.             | 254/947-8363 |
| Sweet Nut Things                     | Shady Villa on Main St.             | 254/947-8088 |
| 5. The Dusty Rose                    | Royal St.                           | 254/947-9215 |
| 5A. Peddlers Alley                   | Behind Museum off Main              | 254/947-9722 |
| 6. Spring House Antiques             | Royal St.                           | 254/947-0747 |
| 7. <b>ROYAL STREET COMMONS</b>       | Royal St. & Center Circle           |              |
| Red Barn Antique Mall                | Royal St. Commons                   | 254/947-1050 |
| Antiques Urns & Ferns                | Royal St. Commons                   | 254/947-5827 |
| 8. <b>ONE ROYAL</b>                  | Royal St. at Main                   |              |
| Grace Jones                          | One Royal                           | 254/947-5555 |
| The Royal Emporium                   | Main & Royal                        | 254/947-5718 |
| 9. Wishing Well Antiques & Things    | 300 Baines St.                      | 254/947-1997 |
| 10. <b>OLD MILL PLAZA</b>            | Main St. at the Creek               |              |
| Salado Haus at the Gazebo            | Old Mill Plaza                      | 254/947-1868 |
| Accents of Salado                    | Old Mill Plaza                      | 254/947-5908 |
| Janet's Unique Boutique & Food Court | Old Mill Plaza                      | 254/702-2022 |
| 11. The Christmas Shop               | Green House on the Creek            | 254/947-5561 |
| 12. <b>CREEKSIDE CENTER</b>          | Main St. at Pace Park               |              |
| Susan Marie's Boutique               | Creekside Center                    | 254/947-5239 |
| Strawberry Patch                     | Creekside Center                    | 254/947-9955 |
| Bundle of Joy                        | Creekside Center                    | 254/947-0609 |
| Prelop Fine Art Gallery              | Creekside Center                    | 254/947-3930 |
| 14. Christy's of Salado              | 300 Main St.                        | 254/947-0561 |
| 15. <b>SALADO SQUARE</b>             | Main St.                            |              |
| Magnolia's on the Square             | Salado Square on Main St.           | 254/947-0323 |
| Just for Him                         | Magnolia's on the Square            |              |
| Papagayo                             | Magnolia's on the Square            |              |
| Natural Treasures                    | Magnolia's on the Square            |              |
| CIO (a unique ladies boutique)       | Salado Square                       | 254/947-0322 |
| Main Street Place                    | Salado Square                       | 254/947-9908 |
| Another Day                          | Salado Square                       | 254/947-0300 |
| Barnhill-Britt Furniture             | Salado Square                       | 254/947-3277 |
| 16. Village Boutique                 | N. Main St.                         | 254/947-9100 |
| 17. Pink Rose Tea Room & Gift Shop   | N. Main St.                         | 254/947-9110 |
| 18. <b>SHOPS ON ROCK CREEK</b>       | Main St. at Rock Creek Dr.          |              |
| Sir Wigglesworth                     | Main at Rock Creek                  | 254/947-8846 |
| Horsefeathers                        | #2 Rock Creek                       | 254/947-3203 |
| Somewhere in Time                    | #3 Rock Creek                       | 254/947-4609 |
| 19. <b>THE COLONY</b>                | North Main St                       |              |
| The Royal Salamander                 | 221 N. Main St.                     | 254/947-1772 |
| Lady's Tee Box                       | 227 N. Main St.                     | 254/947-5597 |
| & Lady Ethel's Gifts                 |                                     |              |
| Windberg Gallery                     | 229 N. Main St.                     | 254/947-     |
| 20. Heirlooms Shopping Center        | N. Main & Blacksmith                | 254/947-0336 |
| 22. Hutchens House                   | N. Main St.                         | 254/947-2547 |
| 23. <b>OLD TOWN SALADO</b>           | Across from Salado Civic Center St. |              |
| The Store                            | Old Town Salado                     | 254/947-9000 |
| The Gallery                          | Old Town Salado                     | 254/947-9000 |
| MJ's Country Corner                  | Old Town Salado                     | 254/947-8885 |
| Aunt Granny's                        | Old Town Salado                     | 254/947-5520 |
| Angelic Herbs                        | Old Town Salado                     | 254/947-1909 |
| Texan by Design                      | Old Town Salado                     | 254/947-4479 |
| 24. Salado Antique Mall              | N. Main St.                         | 254/947-1010 |
| The Little Tin Hutch                 | N. Main St.                         | 254/947-5537 |
| 25. Fletcher's Books & Antiques      | N. Main St.                         | 254/947-5414 |
| 26. Olde Fowler House Antiques       | N. Main St.                         | 254/947-0710 |
| 27. Robertson's Hams                 |                                     |              |
| & The Choppin' Block                 | I-35, Exit 285                      | 254/947-5562 |
| 28. Hill Country Cottage Gardens     | 152 Blackberry Road                 | 254/947-0416 |
| 29. glass coins                      | 1209 N. Stagecoach Rd.              | 254/947-4423 |
| glass floral                         | 1209 N. Stagecoach Rd.              | 254/947-5529 |
| 30. Bayberry's on Main               | 400 N. Main St.                     | 254/947-3625 |
| 31. Elise & Co.                      | #17 Salado Plaza Dr.                | 254/947-1068 |
| 32. Morning Glory Farm               | West Amity Rd.                      | 254/947-5673 |
| 33. The Village Potter               | N. Main St.                         | 254/947-0281 |
| Salado Cigar Company                 | N. Main St.                         | 254/947-0281 |
| 34. The Chicken Ranch                | College Hill                        | 254/947-3455 |
| S4. The Feathered Nest               | The Veranda on Main                 | 254/947-3345 |

**Dining & Lodging**

- |                                    |                           |              |
|------------------------------------|---------------------------|--------------|
| A. Stagecoach Inn                  | I-35 exits 283, 284       | 254/947-5111 |
| B. Inn on the Creek                | Center Circle             | 254/947-5554 |
| C. The Rose Mansion                | One Rose Way              | 254/947-8200 |
| D. The Salado Mansion              | Main St.                  | 254/947-5157 |
| E. The Inn at Salado               | Main St.                  | 254/947-0027 |
| F. Browning's Courtyard Cafe       | Salado Square             | 254/947-8666 |
| G. Cathy's Boardwalk Cafe          | Old Town Salado           | 254/947-8162 |
| H. Halley House Bed & Breakfast    | N. Main St.               | 254/947-1000 |
| J. Mill Creek Country Club         | Old Mill Rd.              | 254/947-5141 |
| K. Cowboy's Barbecue               | I-35, west side           | 254/947-5700 |
| N. Salado Burger King              | 15 Stagecoach Rd.         | 254/947-8060 |
| O. Brambley Hedge Bed & Breakfast  | 1 mile east on FM 2268    | 254/947-1914 |
| P. Country Place Bed & Breakfast   | 2.7 miles east on FM 2268 | 254/947-9683 |
| Q. Dairy Queen                     | I-35 at Thomas Arnold     | 254/947-5406 |
| 17. Pink Rose Tea Room & Gift Shop | N. Main St.               | 254/947-9110 |







**Services in Salado**

- |  |  |  |
|--|--|--|
| S1. Salado Village Voice   | Salado Plaza, #125   | 254/947-5321   |
| S2. Salado Civic Center<br>Chamber of Commerce<br>Public Library<br>Salado Historical Society<br>Salado Village Artists  | North Main St<br>Salado Civic Center<br>Salado Civic Center<br>Salado Civic Center<br>Salado Art Center at the Civic Center                      | 254/947-8300<br>254/947-5040<br>254/947-9191   |
| S3. Royal Street Commons<br>My Hiding Place<br>RoseMatt Properties, Inc.<br>Doug Spiller Photography   | Royal St. at Center Circle<br>Royal St. Commons<br>Royal St. Commons<br>Royal St. Commons<br>In The Veranda on Main                              | 254/947-HIDE<br>254/947-0036<br>254/947-8585<br>254/947-5577   |
| S4. First Texas Brokerage  | Main & Thomas Arnold   | 254/947-5852   |
| S5. First State Bank, Salado   | Main & Thomas Arnold   | 254/947-5242   |
| S6. Family Dentistry   | Main St. & Van Bibber  |  |
| S7. Salado Civic Square<br>The Gathering Place<br>Properties by Larry Sands<br>Farmers Insurance (John Hall)   | Salado Civic Square<br>Main St.<br>Salado Civic Square<br>600 Main St.<br>600 Main St.<br>N. Main St.  | 254/947-4749<br>254/947-5580<br>254/947-3151<br>254/947-5050<br>254/947-5825<br>254/947-5051   |
| S9. Century 21 Bill Bartlett<br>Gary Bartlett Construction   | 213 Mill Creek Dr.<br>Suite #125<br>Suite #100<br>Suite #155<br>Suite #160<br>Suite #165<br>Suite #180<br>Suite #190<br>Suite #130<br>Suite #110 | 254/947-5321<br>254/947-8922<br>254/947-3185<br>254/947-0222<br>254/947-4747<br>254/947-9044<br>254/947-4677<br>254/947-1313<br>254/947-1168 |
| S10. Compass Bank  | Old Mill Road.   | 254/947-8800   |
| S13. <b>SALADO PLAZA</b><br>Salado Village Voice<br>Brookshire Brothers #69<br>Village Pharmacy<br>Deanna's Creations Flowers<br>BoTangles<br>Salado Medical Clinic<br>Harold's Pianos<br>Streets of Salado<br>Markie McTravel | I-35 east access road<br>I-35 east access<br>I-35, west access<br>15 Stagecoach Road<br>I-35 east access road<br>Salado Square                   | 254/947-5042<br>254/947-0345<br>254/947-5470<br>254/947-5660<br>254/947-0048<br>254/947-HAND   |
| S14. Mill Creek Realty   |  |  |
| S15. Auto Excellence<br>Village Woodworks  |  |  |
| S17. CFM Mobil Station   |  |  |
| S19. Salado Exxon  |  |  |
| S20. Salado Floors and Walls   |  |  |
| S21. Linda Pritchard Massage Therapist   |  |  |

**Churches, Schools & Civic Organizations**

- |                                   |                        |              |
|-----------------------------------|------------------------|--------------|
| C1. First Baptist Church          | Main St. at Pace Park  | 254/947-5465 |
| C2. United Methodist Church       | Thomas Arnold Rd.      | 254/947-5482 |
| C3. Salado Church of Christ       | I-35 at Blacksmith Rd. | 254/947-5241 |
| C4. St. Stephen Catholic Church   | FM 2268                | 254/947-8037 |
| C5. Grace Baptist Church          | FM 1670 West of Salado | 254/947-5917 |
| C6. Presbyterian Church of Salado | Allen Meeting Hall     | 254/947-9935 |
| C7. Salado Masonic Lodge #296     | Church St.             |              |
| C8. Salado ISD Schools            | Thomas Arnold Road.    | 254/947-5479 |
| C9. Cedar Valley Baptist Church   | FM 2843 (8 miles west) | 254/947-0148 |

**Dea**

**Public Facilities & Entertainment**

- |  |                 |              |
|--|-----------------|--------------|
| S2. Public Restrooms at Civic Center are open Mon-Fri 9-5; Sat 10-5, Sun 1-5 |                 |              |
| F1. Pace Park Pavilion   | Pace Park       | 254/947-5040 |
| F2. Goodnight Amphitheater   | Royal St.       | 254/947-8887 |
| F3. U.S. Post Office   | Main St.        | 254/947-5322 |
| F4. Central Texas Area Museum  | Main St.        | 254/947-5232 |
| F5. Village Art Center   | Van Bibber Lane |              |

*Main Street Place*  
 A collection of unusual furniture, lighting & accessories for the home  
 #8 Salado Square Salado, Texas Nancy Light 947-9908

*Another Day*  
 Antiques, Gifts, Books, Stationery, Home Accessories  
 in the charming courtyard of Salado Square  
 254/947-0300

*The Inn at Salado*  
 Historic Bed & Breakfast  
 North Main & Pace Park Dr.  
 254/947-0027 800/724-0027

Throw away your tablecloth.  
  
 Barnhill ☆ Britt  
 handcrafted furniture  
 800.473.1494  
 Salado Square • Salado & Whit Hanks Antiques • Austin

# Making and freezing sandwiches

by Ilene C. Miller  
 Co. Ext. Agent

Avoid the morning rush of packing sack lunches this fall. Plan ahead by preparing and freezing your sandwich filling. Better yet, freeze a big batch of sandwiches for several lunches to save time and effort.

Most sandwiches, when properly packaged, freeze satisfactorily. Sandwich fillings can be frozen and take less space in the freezer than sandwiches.

To save time, pack lunch containers the night before and refrigerate. Add hot or frozen foods the next morning and have sack lunches ready in minutes. Also, try setting aside specific areas in your refrigerator, freezer and cupboards for lunch box foods, wrappings and containers for quick lunch preparation.

Sandwich fillings that freeze well are cheddar cheese,

cream cheese, sliced or ground meat and sliced or ground poultry. Tuna or salmon fillings, peanut butter combinations, nut pastes and olives, and pickles mixtures offer variety to sandwich choices.

Fillings that contain raw vegetables, such as lettuce, carrots and tomatoes, and those with the whites or hard-cooked eggs, or fruit jellies, mayonnaise and salad dressings, DO NOT freeze well. The vegetables lose their appetizing crispness and flavor, the eggs become tough and the other fillings make the sandwich soggy.

To prepare sandwiches for freezing, spread the inside of each piece of bread from edge to edge with softened butter or margarine. This keeps the bread from absorbing moisture.

Prepare the fillings from your favorite recipes that have been adapted for freezing or

call our office for sandwich recipes. Spoon into small jars or moisture vapor-proof containers, leaving head space and then freeze.

Wrap sandwiches as they will be used — one or two per package — in moisture-vapor-proof material. Label with the kind of filling and date and then freeze immediately.

Thaw Fillings overnight in the refrigerator and use them as soon as possible to make sandwiches. Thaw the frozen sandwiches in their original sealed wrappings. A package of two sandwiches will thaw at room temperature in 3 to 3 1/2 hours just in time for lunch.

You can safely freeze sandwiches 2 to 3 weeks. Fillings will freeze satisfactorily for 3 to 6 months. For more tips on packing lunches, call or come by the Extension office in Belton.

Educational programs conducted by the Texas Agricultural Extension Service serve people of all ages regardless of socioeconomic level, race, color, sex, religion, national origin or disability.

WHILE IN SALADO, VISIT  
**THE WINDMILL**  
 AT  
 80 MAIN ST  
 ARTS AND CRAFTS  
 POTTERY  
 FINE ART PHOTOGRAPHY

Handcrafted Items and gifts...  
 6 am til midnight  
 at CountryBoys Chevron...  
 I-35 access/Salado

*Magnolias on the square*

**NATURAL TREASURES**  
 Minerals and Fossils For The Decorator or Collector  
 at Magnolias on the Square, #1 Salado Square  
 Main St. Salado, Texas 76571 (254) 947-0323  
 Mon-Sat 10am-5pm Sun Noon-5pm

*Magnolias on the square*  
 Deborah Aldridge, owner  
 #1 Salado Square -- Main Street  
 P.O. Box 1054 Salado, TX 76571  
 (254) 947-0323 Fax (254) 947-0324

**Just For Him**  
 Distinctive Gifts for Men  
 Remember Him  
 Anniveraries • Birthdays  
 Graduation • Father's Day  
 Located in  
 Magnolia's on the Square  
 947-0323

**Papagayo An Ethnic Store**  
 Jewelry ~ Folkart ~ Clothing  
 A shop full of Wonderful, Ethnic Treasures to Wear  
 Flax, Marketplace, Veranda Wear and more.  
 At Magnolia's  
 #1 Salado Sq. - Main St.  
 Salado, Tx 76571  
 817-947-0323

**Q.**  
 What makes a specialty store special?  
**A.**  
 Beautiful clothes, exquisite accessories, people who know fashion, who know how to help... and you.

*Susan Marie's Salado*  
 Main St. 947-LADY, Mon-Sat. 10-5.

## Influenza is life-threatening disease

As influenza season approaches, the American Lung Association reminds Texans that influenza is a potentially life-threatening contagious lung disease that can be prevented with an annual vaccination.

The Centers for Disease Control and Prevention (CDC) stated that the 1997/98 flu vaccine reflects the emergence in other countries of a new type A (H1N1) flu strain. "From late September through early March, all the Type A and B strains are updated by the Texas Department of Health on a monthly basis," announced Jim Schuermann, Public Health Technician in the Infectious Disease Epidemiology Surveillance Division. "For this reason it is very important that laboratories accurately report the different subtypes."

"By searching at <<http://www.tdh.texas.gov/flu.html>>, anyone may electronically obtain this recent data. One also can be connected to the state web site at <<http://www.tdh.state.tx.us/>> for all other services provided by the Texas Department of Health," suggested Robert D. Crider, Jr., Director of TDH's Immunization Division.

W. Paul Glezen, MD, Professor of Pediatrics in the Microbiology department at Baylor College of Medicine in Houston states: "Traditionally there are approximately 80

percent type A and 20 percent type B cases found each winter. For the last several seasons and in February through March 1996, 88 percent of the national specimens tested were the milder type B. So, it is about time for the type A, the one that causes increase mortality, to reemerge."

"An ounce of prevention is definitely worth a pound of cure when it comes to getting your annual flu shot," says

Texas Thoracic Society President, Kenneth Nugent, M.D. "An influenza vaccination is about 70 percent effective in preventing influenza and reducing its severity, and it's safe." Together, influenza and pneumonia, are the fifth leading causes of death among Americans over age 65 and the sixth leading cause of death among all Americans.

Anyone can be a flu victim; See *Flu Shots*, Page 12B



**Christy's  
of  
Salado**

Main St. at  
Pace Park Dr.  
Salado  
Open Daily  
947-0561

We Accept  
Mastercard, VISA,  
American Express  
& Discover

**Tickets available here for Oct. 4 ABWA Style Show at Salado Civic Center. \$10 per person.**

What's in store for you?



beautiful things and a warm welcome to make yourself at home, sip iced peach tea and browse to your hearts content. You'll find gifts for your friends, antiques, art, and accessories for your home, and one of a kind handpainted furniture by patty thomas.

Just a little bit north on main street across from the civic center. Worth the visit because it's simply more than you can imagine!

**BAYBERRY'S**  
ON MAIN

680 North main

947-3625

Salado Antique Mall

Open Mon-Sat. 10 a.m.-5 p.m.  
Sunday 1-5 p.m.

720 N. Main St., Salado  
(Across from the Halley House)  
254-947-1010

**Fletcher's**

Books & Antiques

North Main Street  
947-5414  
OPEN DAILY

Hutchens  
House

Antiques,  
Old Stained Glass  
N. Main St.  
Salado 947-8177  
Open weekends

*Somewhere  
in Time*

HAND-CRAFTED TEXAS COUNTRY FURNITURE  
• ANTLER ART • ANTIQUES  
No. 3 ROCK CREEK DRIVE  
SALADO, TEXAS 254/947-4609

<b>glass coins</b>	<b>glass floral &amp; gifts</b>
stained glass rare coins	
947-4423	947-5529
1209 N. Stagecoach Road	

Salado Country Antiques

Fine estate pieces  
Roseville • Pickard China  
Royal Doulton • Flow Blue  
Carnival Glass • Wedgewood  
Silverplate • Sterling  
Silver • China • Linens • Gifts  
Shady Villa on Main St.  
(254) 947-8363 Open Daily



"Salado Creek" by Larry Prellop

Original Landscapes, Seascapes, Westerns  
by R. Beane, C.W. Dykes, Gisson, Larry Drellop,  
Royce Roberts, Jerry Ruthven, Gary Thornton,  
Jim Ward and other artists  
• Bronzes and G. Harvey Prints

**Prellop Fine Art  
Gallery**

Creekside Center Main St. Salado  
Open Daily (888) 461-2605 (254) 947-3930

**MAIN STREET:** ½ acre of commercial potential with 102+ frontage feet. Good pedestrian traffic. Owner will consider financing.

**CONTEMPORARY, CASUAL, COMFORTABLE.** 3 BR, 2-1/2 BA on corner lot. Single living area with vaulted ceilings, bookshelves, fireplace, wet bar, beautiful Terra Cotta tile. Master BR with nook for sewing room, computer or office, 2,500 Sq. Ft. for only \$166,900.

**BEST BUY** Over 3,000 Sq. Ft. brick home with trees and a view. Large single living/dining area, country kitchen with island, 4 large bedrooms, 3 baths, enormous storage space, gameroom, basement and more. \$179,000.

**BEHIND POST OFFICE,** 257' frontage on I-35 access road. Ideal for commercial venture with highway traffic exposure. \$55,000 with owner financing possible.

**COMMERCIAL PROPERTY ON I-35.** 3+ or - acres on I-35 frontage road with easy access available. Plus 2BR/2BA brick home on West Village Road. Owner financing available.

## Mill Creek Realty

200 Mill Creek Dr. 947-8800

Bradley Phair Dan Nolting Jim Thorn  
947-5422 947-0232 947-5394



**A COWBOY'S HIDE-A-WAY!!** Imagine a unique South-west-styled rustic home hidden behind a grove of live oaks on 5 acres only 2-½ miles from Salado. Now, how about a fantastic workshop with a guest bedroom/bath and storage galore!! Call Larry today and get more details! \$149,500.



**The Historic "Vickrey House."** Listed on the National Register! 1.24 acres at PRIME Main St. location. Ready to convert to Bed & Breakfast Inn. For more information, just call Larry! Owner financing available. Reduced to \$239,500.



**NEW LISTING!! COZY INTERIORS** fashioned of antique timbers, beaded wood, hardwood flooring, 2-story ceiling heights, tin roof ... all combined to create the warm country look and feeling of this truly unique Mill Creek home. 3/2 with sunroom and approx. 16X18 master bedroom. **MUST SEE!** \$142,500. Call Sarah Lee.

Properties By

Larry Sands



Salado Civic Square, #105 947-5580

(next to Salado Civic Center on Main St.)

Larry Sands, 947-5580 • Sarah Lee, 947-1011

## Flu shots

FROM Page 11B

however, high-risk groups are the most vulnerable. High-risk groups include anyone over the age of 65, or anyone suffering from a chronic health condition or lung disease, such as asthma, emphysema or chronic bronchitis. Also included in the high-risk category is anyone that wishes to avoid taking sick time off from work, school or home. In addition, members of the healthcare pro-

feSSION are included in the high-risk category because of the volume of flu patients trafficking through their offices.

The prime time to get a flu shot is Oct. 1-Nov. 15, before the flu season begins. In Texas, some physicians begin providing shots in early September and may continue offering the service through mid-December.

Flu shots are available at doctors' offices, Health Maintenance Organizations (HMO), and most other healthcare facilities. In addition, flu shots

are covered by Medicare and Medicaid. Most people experience little or no reaction to the vaccine. However, one in four people might have a swollen, red, tender area where the shot was delivered.

A person can easily contract the flu because the virus that causes it may belong to different strains of flu families. This is why the Lung Association encourages everyone to get an annual flu shot to protect yourself against the current year's flu virus.



Are you getting the best value for your insurance dollar? For a Free Review

- Home • Auto • Life
- Commercial Insurance Call

Don A. Svadlenak  
102 Travis St. Holland  
657-2621



Country Properties  
Local, Hill Country, South Texas  
254.947.4409



RoseMatt Properties, Inc.

Now located at Royal St. Commons

Developing RoseMatt Oaks in Mill Creek

Exclusive Custom Homes by Larry Lilly

(by Appt.)

254/947-0036 254/947-5708

Farms & Ranches:  
Central Texas Area

½ acre & larger tracts restricted for pre-manufactured homes, start at \$119 per month.

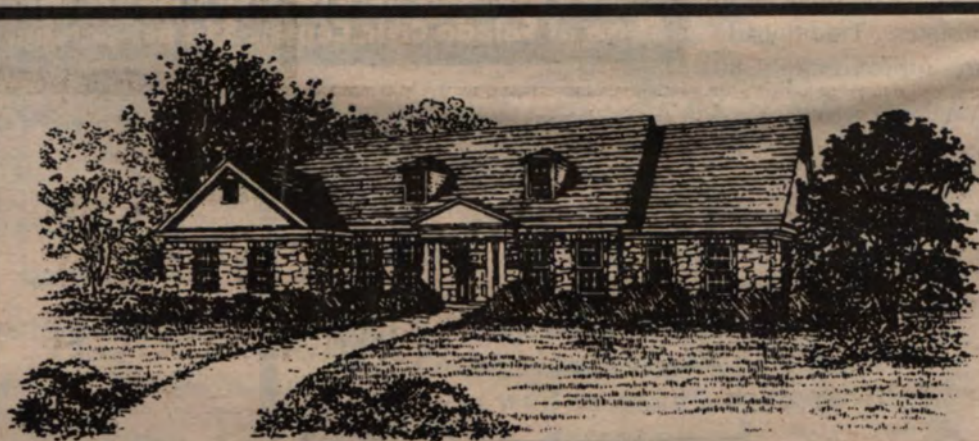
House & Improvements on 10 acres with pool.

15 Acres, 11 miles E of Temple, \$42,500.

H. Sartor

Investments

254-947-5697



Visit our Award Winning Home

1997 Parade of Homes Winner

Best Craftsmanship • Best Architectural Design  
Best Kitchen • Best Bath

523 Indian Trail • Salado Creek Place

\$280,000

Building Fine Homes in Salado and the Surrounding Areas

- New Homes
- Remodeling
- Design Service
- Interior Decorator Service
- Coordinate Financing

From Main Street (downtown) take Royal (1/4 mile) to Center Circle. Left on Center Circle to Salado Creek Place. Take left and follow 1/4 mile to Indian Trail. Home on right - 523 Indian Trail.

VBC

VOLNEY BUILDING COMPANY

RESIDENTIAL BUILDERS

2010 Southwest H.K. Dodgen Loop • Temple, Texas 76504

(254) 778-0329

# Marketplace

a Guide to real estate in and around Salado

## Homes & Lots:

**For Sale by owner: Many wooded lots. Woods of Salado on FM 2484 near Lake Stillhouse.** 254-760-9663 Rita Seghers tfnb

**Country Living 2 miles from downtown Salado. 5,10, 20 acres. Restricted home-sites.** Large pecan and oak trees. Deer and other wild-life. Horse corral. Utilities available. 254-718-1495

tfnb  
**New listing... Elegant finishing touches throughout this Mill Creek Home!** Built in 1996, features, marble entry, marble 3 sided fireplace, rounded corners & bullseye trim, alarm, formal DR with colonial trim. Lots of quality craftsmanship! \$148,500  
**Century 21 Bill Bartlett** 254-947-5050 or 1-800-352-1183 tfnb

**4 BR 2 BA in Woods of Salado for only \$110,800.** 1.99 Beautifully wooded acres. A great family home. Freshly painted. **Century 21 Bill Bartlett** 817-947-5050 or 1-800-352-1183

**Beautiful 2 acre estate on the banks of Salado Creek for sale.** Beautiful creekside views, large trees, lots of frontage, secluded location off of Rock Creek Dr. An excellent buy at \$149,500. Call Total Property Access 933-0050 or 760-4900 tfnb

**\$3,000 closing costs paid by seller!** New Austin stone 3 BR 2 BA, tile entry, fireplace, 2 plus acres of oak trees, formal dining room, breakfast bar, bay windows, and arched windows so you can watch the deer. \$142,900  
**Mary Kite. Century 21 Bill Bartlett** 947-5117 or 947-0342 tfnb

**For Sale: 9 acres adjacent to Salado Cemetery** - All utilities in place. Salado water in addition to well. \$90,000 owner will finance. Call 947-4033.

9/10b  
**Settling Family Estate** 14 acres Salado, Year round historical live spring, deer, scenic homesite. Huge trees, famous Indian campground. Asking \$5,400 per acre. Owner financing. Make offer Frank 512-515-5910

10/  
**Gov't Foreclosed homes** from pennies on \$1 Delinquent Tax, Repo's. REO's. Your area. Toll Free (1) 800-218-9000 Ext H-9438 for current listings.

10/8  
**For Rent:**  
Studio/Workshop ideal for **ARTISTS, ARTISANS, GALLERY OWNERS, COOP** etc. Beautiful location. Available NOW  
For information Call Darwin Britt 817-947-5575

Space Available. Old Town Salado. Retail or office. Call Becky 947-9000 tfnb

**3 year old Beautiful 3/2 Mill Creek Home.** Great family neighborhood. Huge yard, wood & tile flooring. Option to purchase. For Rent \$1200 Call 947-8366

tfnb  
**For Lease - Available Oct. 1** Blaylock Circle, Mill Creek - Quiet cul-de-sac. 3/2/2 split bedrooms. Privacy fenced yard - Pets considered. Lawn Maintenance paid by owner. \$1325/mo. Call Sarah Lee Properties by Larry Sands 947-5580 or 760-3181  
**For Rent: Victorian Oaks.** 2 BR, office, 2-1/2 bath, formal dining and living, den, and entertainment room. Beautiful wooded lot. \$1400. Century 21 Bill Bartlett 947-5050

**For Rent 3 BR 1 1/2 BA** in Salado 947-8732

10/1p  
**Family Reunions, Class Reunions, Weddings** and other special events. Call Civic Center here in Salado at 817-947-8300 for rental fees. Air Conditioned Auditorium and kitchen facility. Up to 200 people. Also shaded park and Gazebo available. Ideal for Weddings, Showers, and Receptions.

**You can run an ad this size every week for just \$5 each week.**  
**Salado Village Voice**  
**947-5321**  
**Deadline is Friday**



## 20 Years of Building Traditions

Plan Design • Arrange Financing  
Decorator Services

**Building on Your Lot or Ours**  
Townhouses & Homes  
Commercial



P.O. Box 1032 Salado, TX 76571  
254-771-2985 or 254-947-0838



**Welcoming feel of colonial Williamsburg,** coupled with some of the best, most current interior design. Spacious 4BR/3BA, 2 1/2 BAs, 2 living, 2 dining, sunroom, light and open with hardwood flooring and outstanding interior trim. Beautifully wooded spacious lot. Swimming pool! \$279,500.



**Own your own bit of history.** Beautifully restored turn-of-the-century home on .86 acre in Original Town of Salado. Now serving very successfully as Bed and Breakfast. Wood floors, beaded wood walls, ornate crown mouldings, antique bath fixtures. \$250,000.



**Excellent opportunity to be a part of Salado's business community.** The Pink Rose Tearoom and the Rose Cottage Gift Shop is in a prime location at one of the busiest areas of the village for visitors. over 3,000 SF of space with walk-up access. Just a few steps from the opening of our newest "Antique," the historic village bridge. \$300,000.

**Call Sarah Lee, Realtor**  
947-5580  
947-1011 • 760-3181



Properties By Larry Sands  
**Selling Historic Salado**  
Salado Civic Square, #105  
(next to Salado Civic Center)



**Great Oaks**  
**A Beautifully Wooded Highly Restricted Subdivision off Blackberry Road near Highway 2268 Salado, Texas**

**Century 21**  
**Bill Bartlett**



**Springtime Reduction!**  
**Now is the time to buy these 2+ acre lots and start building your dream home. One Horse per acre allowed. Homes may be nestled in large oak, pecan and a variety of other trees. Residents will enjoy the abundant wildlife. Features include these:**

- Salado Schools
- Quick Access to I-35
- Country Living
- Highly Restricted Development
- Trees, Trees, Trees

**Century 21 Bill Bartlett**  
**Rita S. Brown, REALTOR**  
P.O. Box 183, Salado, TX 76571  
(254) 947-5050 or 947-5714  
(800) 352-1183



Buy your Ducks  
for Oct. 4 Race

947-5040  
947-5050



**TOWNHOME COMFORT AND LEISURE** at its best in lovely Chisholm Ridge. #11 feels like a separate home with large native trees at the front entry and views of the golf course. Open, bright, roomy floor plan with decks off spacious living room and master. 3BR/2-1/2BA/2Gar. \$136,500. Call Sarah Lee.



**Peaceful, perfect retirement home.** All on one level. Gorgeously wooded lot. 3BR/2BA/2Gar. Major re-decorating just completed, new carpeting, new tile flooring, some new appliances. See through fireplace. \$149,900. Call Sarah Lee.



**TOWNHOME EXTRAORDINAIRE!** If you like to entertain and would enjoy a GIGANTIC 31'X31' living/dining area equipped with WET BAR and overlooking Mill Creek Golf Course and SALADO CREEK, this is for you. With 3,000 SF, a buy at \$167,500. Call Larry.

Properties By

Larry Sands



Salado Civic Square #105 947-5580

Next to the Salado Civic Center on Main St.

Larry Sands, 947-5580 • Sarah Lee, 947-5153

## Brookshire teams with SPAT to help kids

The decision was made at the Sept. 11 Salado Parents and Teachers (SPAT) meeting to participate with Brookshire Brothers "Apples for the Students" and General Mills "Box Tops for Education" programs in obtaining free learning tools for the Thomas Arnold Elementary School.

"Please save your pink register receipts from Brookshire Brothers and send to school with your child," asks SPAT member Heidi Couchman.

"Their teacher will turn those in to me each week. Please ask your neighbors and friends to help us with these receipts!"

Thomas Arnold Elementary has the ability to receive free computers, VCRs, TVs, and class room software, there are no limits!!

The class with the largest total each six weeks will win a pizza party.

The General Mills Box Tops of Education program requires only that the box top be

sent in to the school and collected monthly.

The school will receive 15 cents for each cereal box top and 10 cents for each snack box top and Yoplait multi-pack cover turned in during the program timeline.

"Kids can access the Internet to see how many box tops we have sent in each month," Couchman added.

A check will be sent to the school after March 31, 1998.

Send these box tops to school or drop off boxes are located at Brookshire Brothers, Village Pharmacy, Village Art Center, and the Salado ISD administration office.

The following General Mills cereals are part of the box top program: all flavors of Cheerios, Chex, Total, Wheaties and Oatmeal Crisp cereals.

Also, French Toast Crunch, Cocoa Puffs, Cookie Crisp, Golden Grahams, Lucky Charms, Berry Berry Kix, Kix, Boo Berry, Count Chocula, Franken Berry, S'mores Grahams, Trix, Reese's Peanut Butter Puffs, Kaboom, Body Buddies, Fiber One, Raisin Nut Bran, Basic 4, Honey Nut Clusters, Nature Valley Low Fat Granola, Country Corn Flakes, Betty Crocker Dutch Apple and Betty Crocker Cinnamon Streusel.

The following snack box tops will generate 10 cents each:

Nature Valley Granola Bars, Nature Valley Crunchy Granola Bars, Sweet Rewards, Shark Bites, Pop Secret, Fruit Roll Ups, Golden Graham Treats, Gushers, Fruit by the Foot, Fruit String Thing, Dunkaroos, Tasmanian Devil, Bugs Bunny & Friends, Trix Fruit Snacks, Yoplait Multi-Pack Original, Yoplait Adventure Pack, Yoplait Trix Multi-Pack.

"If you are a member of an organization locally who could announce these promotions and would be willing to collect these items for the schools benefit, please contact me for more product information," Couchman said.

For more information, contact Couchman at 947-3655.

## Monday Club will meet Oct. 8

The Monday Club will meet at 2 p.m. Oct. 8 in the Friendship Hall of the Salado United Methodist Church.

Thelma Griffith will give the devotional, followed by a program on gardening by Johnnie Barrett. The hostesses will be Zel Elfrink and Bobbie Carroll.

The Monday Club is still collecting recipes for the new cookbook. Please help us.

### Salado - a Lifestyle!!

Peaceful gardens, pond, trees, 3BR/2BA. \$97,950.

Seller will pay \$3,000 of closing costs! New Austin stone home on 2 acres, Woods of Salado. 3BR/2BA, \$142,900.

Lots of trees, livestock okay on 10 acres, stone home, large garage. 3BR/2BA. \$109,500.

1.6 acres trees. Sunroom, garden, 4BR/2BA \$97,500.

19.5 acres: trees, pond, septic, electric & creek. \$4,000/acre.

36 acres: great homesite, fenced, grass, rolling hills. \$2,100/acre.

Call Mary Kite to see these fine properties

HOME

254/947-5117

OFFICE

254/947-0342



Century 21

Bill Bartlett

600 N. Main St.

Salado

(254) 947-5050

1-800-352-1183

Each office is independently owned & operated

### NO ONE KNOWS SALADO LIKE RITA BROWN

No one knows the Salado real estate market like Rita Brown, a top sales associate at CENTURY 21 BILL BARTLETT. She has the in-depth, local expertise you need, backed by the strength of the world's leading real estate organization. So whether you're looking to buy or to sell, there's no better choice in Salado than Rita Brown, of CENTURY 21 BILL BARTLETT. Call today.



Century 21

Bill Bartlett

860 N. Main St. Salado

(254) 947-5050

Rita Brown: (254) 947-5714

## THE HOMEPLACE



Nestled on a tree-covered knoll in Salado's Historical District, THE HOMEPLACE represent the much sought-after lifestyle of yesteryear. A winding lane meanders around large live

oaks to a dry creek crossing. Its character reflects a day in history where people shared time together on front porches. Only a short walk away is excellent shopping, art galleries and dining, giving a reflection of Salado's past.

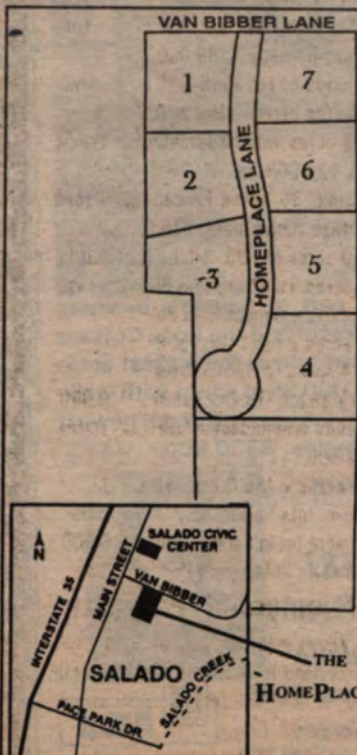
THE HOMEPLACE will reflect proportions, detailing and simplicity of true classical architectural styles. "Something old, something new" literally comes to life as treasures from historic homes are blended in harmony with new construction. The best of yesterday . . . built better today.



Vic Means  
254/947-8177  
Salado

DREWS  
Custom Homes  
builder

Gerald Drews  
254/773-1067  
Temple



# Fall membership drive under way for Temple Community Concert Association

The fall membership drive is now underway for the Temple Community Concert Association as the 1997-98 concert season begins.

Leroy Villanueva, baritone, will be presented in concert at the C.A.C. 7:30 p.m. Oct. 6. Villanueva has been acclaimed for his unique combination of vocal beauty and a thrilling stage presence.

This is an opportunity for the community to join the

1997-98 season without missing any concerts. Memberships will be available in the lobby Oct. 6.

The remainder of the season will feature these performances: The Vancouver Wind Trio on Jan. 29, 1998; the Tommy Dorsey Orchestra on Feb. 26, 1998, and Lainie Nelson on March 26, 1998. Adult memberships are \$35, Student memberships are \$10, and Family membership with


2 adults and 1 or more children are \$75. Single parent family memberships are \$45. Dr. Charles Cox has more information at 773-3274. President of the C.C.A. is Mary Alice Marshall with board members David Pennington, Linda Pennington, Durward Howard, Sam Farrow, Virginia Russell, Patsy Hinkle, Carole McCall, Helen or Eugene Kirby and Blanche Kevlin.



**1400 Elizabeth Circle**  
Enjoy a tremendous view of Mill Creek Golf Course from the porch of this 3-2-2. Formal and informal dining, large master suite.  
**254/947-9141**




**Lilly Homes**  
Custom Home Builders  
(254) 770-0020 • (800) 442-3599



1618 Canyon Creek Dr., Suite 110  
Temple, TX 76502  
(254) 773-9190  
FAX (254) 773-9224

- **WARM AND FRIENDLY.** Walk to golf course or ride in your cart. Living room with fireplace, 4BR/3 full baths, formal dining room. Large storage/workshop/golf cart garage. Home sits on 1/2 acre, beautifully landscaped. Great family home. \$134,500. Call Sandy
- **HANDYMAN'S DREAM IN SALADO:** 3,400 SF living area, 4BR, study, 3BA, 2 big living areas. Reduced to \$99,000 **FIRM.** Call Tricia.
- **IF YOU YEARN FOR THE COUNTRY,** you'll love this 4BR/2-1/2 BA home on almost 8 acres. Chain link fenced & cross fenced. Lots of beautiful oak trees. Great patio. Country kitchen w/ lots of cabinets. Security system. Workshop. Only \$189,500. Call Elaine.



**New listing: A gardener's delight in Mill Creek!** A wonderful backyard features covered patio, garden area, 2 wells, and fruit trees. 3/2/2 plus carport & septic for RV. Formal LR & Den. Only \$131,000.

**Residential Listings**

**2BR/1BA home or investment property in Rogers.** 930 SF workshop along back of house. Fenced back yard. Wheelchair access in front. Owner will sell "as is." \$37,900.

**This 2BR/1BA in Downtown Bartlett** is a jewel in the making. Has undergone extensive renovation and has lots more potential. \$52,500.

**A place for your growing family!** Garden spot and sunroom on wooded 1.6 acres. 4BR/2BA. \$97,500.

**Low utility bills, beautiful gardens, pond and deck** located in the quiet country setting of Salado Springs. \$97,950.

**Ten acres with Texas ranch-style Austin home!** 3BR/2BA, trees. Garage with workshop space, out-building. Only \$109,500.

**Only \$110,800 for 4BR/2BA on 1.99 beautiful acres** in the Woods of Salado. A great family home freshly painted.

**Two new homes on over 1/2 acre.** Wild Rose Subdivision. Easy access to I-35. Over 1,800 SF. \$124,900 each.

**3BR/2 BA home in Canyon Creek, Temple.** Partially covered deck with hot tub overlook back yard. Sprinkler system. 1,850 SF. \$125,500.

**Lovely 1 year old home, many extras.** Small yard to maintain. \$129,900.

**New stone home on 2+ acres in Woods of Salado!** 3BR/2BA with formal dining room or bonus room. Great porches! Seller will pay \$3,000 of closing costs. \$142,900.

**Elegant finishing touches throughout this Mill Creek home!** Built in 1996, features marble entry, marble 3-sided fireplace, alarm, formal DR with colonial trim. Lots of quality craftsmanship! \$148,500.

**Awesome rock fireplace accents this multi-level in Victorian Oaks.** 3BR/2BA with master BR downstairs. Lots of windows and large deck overlook wooded lot. \$154,800.

**Wooded 2 acre lot.** 4BR/2-1/2BA. Great Oaks. \$162,500.

**New construction on 3 acres in Woods of Salado.** 4BR/3BA open floorplan. Lots of windows. \$164,800.

**Live in the woods!** Beautiful, like new, 6 month old home on 4+ acres. 3BR/2BA with study, 2,181 SF. Many amenities. Horses OK. \$164,900.

**Lovely custom home, 3BR/3BA.** Special home in Mill Creek. \$165,000.



**Bill Bartlett**

860 N. Main St. Salado, TX 76571  
(254) 947-5050 1-800-352-1183



**Welcome to easy living.** View of golf course. Sunroom views driving range and #5 Fairway. Monthly maintenance fee relieves you of yardwork. \$159,000.



**Hardwood floors.** Cozy den with French doors to private deck. Large Master bedroom with office. Majestic live oaks. \$149,900.

**Large 5BR/4BA home on an acre of trees on Royal.** \$179,500.

**Sacrifice!** Rock, split-level home on 58 acres. Perfect for horses. Fenced/cross fenced. Workshop, equipment shed, horse and cattle barns. Make an offer today!

**Great corner lot in Mill Creek.** Over 4,000 SF. 3BR/2-1/2 BA, office, formal dining & sun room. \$225,000.

**New 4BR/3BA, 3-car garage home on 3.5 acres.** Location, setting, style & quality. Native trees & wildflowers. \$279,900.



Rita Brown	947-5714
Mary Kite	947-5117
Melanie Kirchmeier	947-9077
Denver Mills	947-9205
Myra Novosad	947-1619

**Custom home in Mill Creek.** Formal Dining & Living. Two fireplaces. \$309,000.

**Between Salado and Belton.** Wrap-around porch. 2,700SF on 29.1 wooded acres. \$330,000.

**Dream home still under construction.** 4BR/2-1/2 BA two-story with study and 3-car garage. \$355,000.

**Acreage & Homesites**

**354 acres near Holland, creek, deer, woods, lakes, pecans.** You will like it!

**200.4 acres, 3 miles South of Florence** on Berry Creek.

**104.9 acre tract near Prairie Dell.** Lots of road frontage. \$199,000.

**75 acres on FM 2115 with great view.**

**60 acres between Belton & Salado.**

**45.4 acres with 1-35 frontage at Prairie Dell.** \$3,500/acre.

**Approx. 36 acres Fenced, good road frontage, native grass.** \$76,521.

**20.9 acres on I-35, 3 miles S of Salado,**

**12 acres, long Lampasas River frontage,** huge trees, 3 miles from Belton.

**10 acres 2 miles West of Salado.**

**5.24 acres on Salado Creek.**

**1.6 acre lot, Live Oak Estates,** \$19,950.

**Heavily wooded lot in Live Oak Estates.** \$13,500.

**1.3 acres in Mill Creek.** \$39,000.

**2 acre lots Salado Heights,** \$16,000.

**1/2 acre lot in Salado Springs,** \$9,000

**Homesite in Morgan's Point.** \$3,500.

**Commercial Property**

**Excellent location, corner of FM 2305 & Woodland Tr.,** 3,351 SF, \$1,210/month income. Only \$89,000. Contact owner/agent Rita S. Brown.

**Over 9,000 SF commercial property.**

**.8 acre, Loop 121, Belton,** \$25,000

# First Texas Brokerage Co.

254/947-5312  
254/947-9141  
254/773-9635  
254/893-2597

Glenn Hodge  
Sue Perkins  
Linda Gosney  
Jan Hallmark

Visit our website at <http://www.vvm.com/texas> or E-mail us at "texas@vvm.com"

In The Veranda  
Main St. Salado

254-947-5577



## RESIDENTIAL LISTINGS



**\$162,500:** Townhouse in Mill Creek with great view of #18 tee box and fairway. Remodeled with beautiful hardwood flooring, wallpaper and paint.

**\$229,000:** White stone house with 4/3/2. Beautiful coordinating wallpaper throughout. Formal and informal living and dining. Tremendous view off large deck. Space in attic could be finished out to add more room. Master suite opens onto deck.

**\$194,800:** Enjoy the tremendous view of Mill Creek golf course from the back porch. Custom built 3/2/2 with formal dining and office. Split bedrooms, huge master suite. Detached garage with side entry.

**\$170,000:** Horse ready! 10 acres with stalls, wash area, tack room+. Large 4-3-carport with covered porches, bonus rooms and more. Burnet ISD. A Must See!

**\$159,000:** One of a kind stone and wood home in Mill Creek. Large lot hosts this 3-2½. Second story balcony allow for pretty view. Bright colors in bedrooms. Owner will also sell antiques.

**\$110,000:** Spacious 4/2/3 on large lot with large native trees and backyard deck. Recently updated carpet, paint and tile floor. Belton Lake. **PRICE REDUCED!**

**\$110,000:** Liberty Hill/Bertram area. 94 Doublewide on 5 acres. 4/2 with 2 living areas, glamour bath, walk-in closets. Property includes well and septic.

**\$95,900:** Like new 3-2-2 on large lot **SOLD** to Springs. Split bedrooms, security system, deck.

**\$89,900:** New construction in Salado **SOLD** Digs.



**\$215,000:** Quiet cul-de-sac with view of #16 green. 3-2½-3 stone with great master suite, hardwood floors, and built-ins. Exit to deck from master, living or breakfast. Golf cart drive from house.

**\$87,500:** Close to schools, churches, shopping, hospitals. 3-2-2 formal living and dining. Screened-in back porch, large fenced yard with trees. **TEMPLE.**

**\$74,000:** LOW, LOW electric bills due to EXTRA insulation on 3-2-2 on quiet cul-de-sac. Some handicapped features. **TEMPLE.**

**\$69,900:** Price redu **UNDER CONTRACT** in.

**\$52,000:** Located on one acre is this 2/1 frame. Picket fence, fruit trees, bluebonnets. Just off FM 2484 with easy access to Killeen or IH-35.

## ACREAGE

**West Amity Estates:** 10 acres with many trees. \$42,000.

**Hwy 317:** 26 acres of heavy woods. \$129,900

**The Bluffs of Salado Creek.** Beautiful view of Salado Creek canyons. Owner finance.

**Belton:** 20 acres fronting Nolan Creek. Large live oak trees with old home. \$139,000.

**FM 2115:** 19 acres, road frontage, seasonal creek. \$2,200/acre.

**FM 2843:** 10-100 acres with trees and deer. Excellent home sites. \$1,950-\$2,450 per acre.

**FM 2268:** Mobile Homes allowed on this 4 acres. Owner financing, \$17,500.

**River Place Road:** 1.9 acres with river frontage. \$25,000.

**West Amity:** 5 ½-acre lots. Ready to build. \$5,200 per lot.

**FM 2115:** 178 acres with frame house, 2 barns, 2 stock tanks. Owner finance. \$275,000.

**Atkins Road:** 49 acres, good soil. Owner finance. \$1,350/acre.

**Woods of Salado:** 2 large lots with trees. \$25,000 each.

**Salado Springs:** 4 tracts, 2 facing FM 2484, 2 secluded lots.

**Royal St.** 8.5 acres with excellent view & stock tank. \$55,000

**Mill Creek:** 3 choice lots, \$25,000-28,000.

**Live Oak Estates:** 1.79 acres with beautiful trees. \$22,500.

**IH-35 & Rose Lane:** 38 acres with frontage on IH-35 and Rose Lane. Many trees and creek. \$250,000.

**Florence/Andice Area:** 5 to 50 acres, wooded or cleared, with or without water. Call Jan for more information.

**Florence:** City Lots zoned for duplexes, has city water and sewer. Bring your builder or ask Jan for referral.

## COMMERCIAL PROPERTY

**3 acres fronting I-35,** 1 mile S. of Salado, excellent building site. \$36,000.

**Main St. in Belton.** 6 lots that include 3 houses, \$210,000.

## FOR RENT

**Quiet neighborhood, large yard. 2-3-2 for rent.**

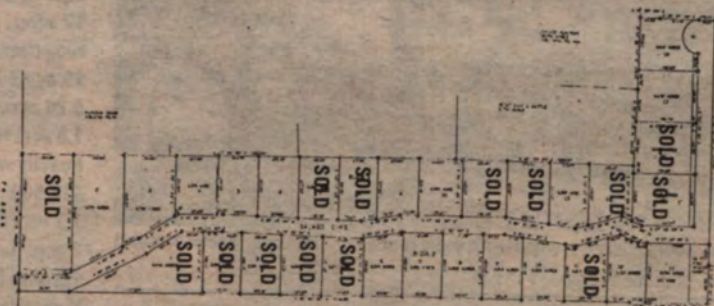
## Horizon Homes



**\$275,000:** Executive home in Salado. Large 4/3/2 with tremendous sunset view off the large deck. Formal and informal living and dining, hardwood floors, fireplace, split bedrooms, terrific kitchen. Fourth bedroom could be office. Fireplace in den. Enter the deck from den, dining or master suite.

## Salado Oaks

1/2 Acre & larger  
restricted wooded lots



1/2 mile east of Interstate 35  
on FM 2268

10% Down • 10% Interest

## The Bluffs at Salado Creek

