

## Bell Co. issues mask directive Residents encouraged to wear face coverings

By TIM FLEISCHER  
EDITOR-IN-CHIEF

Bell County Judge David Blackburn issued Directive #7 that requires all businesses that provide goods or services to the public to implement a health and safety policy which mandates the wearing of a face covering when on the business premises where social distancing is not feasible.

"Directive #7 strongly encourages the wearing of face coverings when in public places where it is difficult to maintain social distancing," Blackburn said in a June 24 news conference.

On June 29, Bell County Commissioners voted unanimously to amend the directive to remove the mandatory language. The Court's amended directive "strongly encourages businesses to require masks if a minimum of six feet social distancing cannot be maintained," according to Precinct 2 Bell County Commissioner Bobby Whitson.

The action by Commissioners remove any law enforcement or penalty from the Directive. Judge Blackburn joined the commissioners in voting for the change.

At the time that Judge Blackburn issued the Directive #7, he pointed to the numbers in Bell County (for June 23): 819 confirmed cases of COVID-19; 23,278 tests; 86 hospitalized; 38 admitted to ICU and a seven day average of 26 new cases per day.

By one physician's calculation, Judge Blackburn added, "our May positivity rate, which is the number of positive cases to the number of tests, was 4.5%. In June, our positivity rate is now 9.3%. In other words, people are now testing positive at almost double the rate they were a month ago."

Bell County is part of Trauma Service Area L under the state system. Of 1,027 total staffed hospital beds, 79% of those beds are occupied and there are only 13 ICU beds available as of yesterday."

The largest private health care provider in Bell County informed Judge Blackburn that they now have the largest number of COVID-19 patients that they have had since the pandemic began.

Judge Blackburn said that two statements by Gov. Abbott earlier in the week were alarming to him: "that COVID-19 is spreading at an unacceptable rate and that 'if the spikes continue, addi-

tional measures are going to be necessary."

"If we don't see the numbers turn around, he is prepared to step back in and issue more mandates. In fact, I think the message is we will see a return to some measures that none of us want to see return," he said.

"The Governor has also indicated that a 'one size fits all' approach to dealing with COVID 19 around the state is not appropriate," Judge Blackburn said. "I applaud the Governor for allowing local authorities to assess their local situations and take measures that are appropriate for their community. What may be necessary in Harris County may not be necessary in Bell County. What may be necessary in Bell County may not be necessary in Llano County. I think this approach, from both a health and a policy perspective, makes the most sense."

Judge Blackburn said that he discussed the matter with area cities, chambers of commerce, our health care providers, our Public Health District" before issuing Directive #7.

Directive #7 requires all businesses that provide goods or services to the public to implement a health and safety policy which mandates the wearing of a face covering when on the business premises where social distancing is not feasible.

Directive #7 also strongly encourages the wearing of face coverings when in public places where it is difficult to maintain social distancing. "This Directive is intended to mitigate the spread of COVID19 in our community," Judge Blackburn said. "The Directive is intended to help stem the trend lines we are now seeing in the number of new cases in Bell County and to help us maintain our hospital capacity."

"I do not issue this Directive lightly," Judge Blackburn said, "I issue this Directive in the hopes that it will help stave off additional Directives, or Orders from the Governor that will be much more intrusive."

"I don't think any of us, me included, want to see us going back to a point where businesses are closed again," he added. "By implementing this measure, at the local level, I think it provides us with the best opportunity to balance the re-opening of our economy and flow of commerce with the health concerns associated with the COVID19 pandemic."



Bell County Sheriff's Department deputies conducted a live shooter training exercise on June 25 at Thomas Arnold Elementary School. For the safety and security of all concerned, they let our photographer stage a photo with them before actually conducting the exercise. (PHOTO BY ROYCE WIGGIN)

## Governor takes executive action to contain spread of COVID-19

### Abbott closes bars, tubing businesses, limits restaurants to 51% capacity

Governor Greg Abbott last week issued an executive order limiting certain businesses and services as part of the state's effort to contain the spread of COVID-19.

In issuing the order, Gov. Abbott stated that this decision comes as the number of people testing positive for COVID-19 and the number of hospitalizations have increased and the positivity rate in Texas increased above 10%, which he previously stated would lead to further preventative action. The targeted, measured directives in the executive order are based on links between certain types of businesses and services and the recent rise in positive cases throughout the state.

The order includes the following:

All bars and similar establishments that receive more than 51% of their gross receipts from the sale of alcoholic beverages were required to close at noon on June 26. These businesses may remain open for delivery and take-out, including for alcoholic beverages, as authorized by the Texas Alcoholic Beverage Commission.

Restaurants may remain open for dine-in service, but at a capacity not to exceed 50% of total listed indoor occupancy, beginning June 29.

Rafting and tubing businesses must close.

"As I said from the start, if the positivity rate rose

above 10%, the State of Texas would take further action to mitigate the spread of COVID-19," said Gov. Abbott. "At this time, it is clear that the rise in cases is largely driven by certain types of activities, including Texans congregating in bars. The actions in this executive order are essential to our mission to swiftly contain this virus and protect public health. We want this to be as limited in duration as possible. However, we can only slow the spread if everyone in Texas does their part. Every Texan has a responsibility to themselves and their loved ones to wear a mask, wash their hands, stay six feet apart from others in public, and stay home if they can. I know that our collective action can lead to a reduction in the spread of COVID-19 because we have done it before, and we will do it again."

Gov. Abbott has expanded the ability of mayors and county judges to impose restrictions on outdoor gatherings of over 100 people. Previously, this applied only to outdoor gatherings over 500 people. The Governor has also directed the Texas Health and Human Services Commission (HHSC) to enact emergency rules that provide strict health and safety standards and procedures related to COVID-19 for child care centers in Texas. These two actions are based on data showing an increase in COVID-19 transmission stem-

ming from large gatherings and child care centers.

"These are just some of the steps Texas will take to contain the rise in COVID-19 cases and hospitalizations," said Governor Abbott. "Today's proclamation and emergency rules will aid in that effort in two key ways: allowing restrictions on large gatherings where COVID-19 is easily spread and implementing a statewide standard of infection control for child care centers. However, as we face this challenge, there is no substitute for personal responsibility.

"I urge all Texans to do everything in their power to reduce the transmission of the coronavirus by wearing a face mask, washing their hands often, and staying six feet apart from others," he stated.

The Governor also issued an executive order to expand the hospital capacity. The Texas Medical Association responded to the Governor's order when TMA President Diana L Fite, MD, stated: "This order is an appropriate use of the governor's authority to ensure Texas hospitals have the beds, staff, and resources that physicians need to care for our most seriously ill patients - whether with COVID-19, other diseases, or significant trauma."

"Combined with Governor Abbott's announcement that the state will take no additional steps for now to reopen the economy, with his

earlier decisions giving local officials more authority, and with his continued insistence that all Texans take common-sense safety precautions, this order gives Texas additional tools to respond to this pandemic.

"It's important to note that the governor did not reissue the same broad order he first put in place on March 22 and rescinded on April 21," Dr. Fite said. "This is critical because we cannot revisit a time when our patients got sicker because physicians had so few options to provide needed care."

According to Dr. Fite, the new order is "sharper and more focused." It only applies in those counties with significant recent increases in COVID-19 patients in the hospital and does not apply to ambulatory surgical centers or physicians' offices and it allows hospital surgical procedures that do not deplete hospitals' ability to 'cope with the COVID-19 disaster.'

"All of us - physicians, hospital administrators, all Texans," Dr. Fite said, "need to share this simple message, over and over, with our patients, our friends, our family, the news media, and elected officials: Wash your hands often. Stay home if you can. Practice social distancing. And for your sake, for your neighbors' sake, for my sake, and for your grandma's sake, wear a mask, Texas."

## Military exhibit opens at Salado Museum for July

Salado Museum and College Park ([www.saladomuseum.org](http://www.saladomuseum.org)) is hosting a special exhibit of military war photographs in the Lucile A. Robertson Center during the month of July. The large collection includes images taken during World War I, World War II and the Vietnam War.

The museum exhibit also includes military uniforms and other artifacts from the time.

"We chose this year to host the exhibit as it marks the 75th anniversary of the end of World War II and the 45th anniversary of the end of the Vietnam conflict," says Dave Swarthout, Salado

Museum executive director. "We are proud to provide an opportunity for the public to view these incredibly moving photographs and see firsthand the sacrifices that were made to protect our freedom."

The collection of 3 by 3-foot photo panels were

formerly displayed in a military museum at Fort Hood. The Salado Museum military exhibit is open Mondays through Fridays, 10 a.m.- 4 p.m., July 1-30, and is free to the public. Donations are appreciated.

"Please bring your entire family to view and learn

from these photos and artifacts. We are observing all Covid-19 guidelines and the space in our hall is large enough for safe social distancing," Swarthout adds.

For more information: visit [www.saladomuseum.org](http://www.saladomuseum.org); call 254-947-5232; or email [director@saladomuseum.org](mailto:director@saladomuseum.org).

seum.org.

The Salado Museum and College Park is a 501(c)(3) non-profit organization that promotes and preserves the pioneer history of Salado, Texas, and legendary Salado College. The Museum is located at 423 South Main Street.



# Salado ISD students have 2 options for going back to school

Salado ISD will be providing two attendance options for students for the 2020-2021 school year:

Option 1: Full-time in-person on campuses, with heightened hygiene and disinfection protocols.

Option 2: Full-time remote instruction with the student working from home.

All students will be required to engage in all classes every day, regardless of whether they attend school in person or through remote instruction. The assignments and grades will be the

same for both on campus and remote instruction. All grades will count towards class promotion, grade point average and class rank. We have hired an instructional technology specialist to help us improve our remote instruction.

We are asking that all Salado ISD families complete a survey to let us know which option they currently prefer for their students. This information is important as we are actively planning schedules, classroom space, remote instruction, trans-

portation, and food service. The survey was e-mailed to parents last Friday and Saturday.

Within the last three days, parents have responded to the survey for the majority of our students. Out of the responses for 1,198 students we have received so far, the parents of 1,026 students (85.6%) are planning to have their students attend school in person. The parents of 172 students (14.4%) are planning to have their students attend school remotely.

A few parents have asked me about a hybrid option in which students would alternate days or weeks between in school and remote learning. This would enable us to maintain lower class sizes and keep students spread out more. We have definitely considered that option. In fact, a month ago we thought that was going to be our plan because the state had restrictions for summer school in which no more than 11 students could be in a class. For us to be able to comply with that restriction, we would have needed to have alternating days or weeks.

The state has since announced that there will not be any restrictions on class

## Superintendent's Corner

by Dr. Michael Novotny



sizes for schools in August. We might still be able to consider a hybrid/block schedule option. First we will need to know whether or not the Texas Education Agency will allow this option. We would also want to know how that schedule would impact participation in University Interscholastic League (UIL) academics, athletics, and fine arts.

We will provide additional details regarding the

openings of our schools in August as we receive additional guidance from federal, state, and county health officials. We will also be forming a committee of parents, teachers, and administrators to help us develop the best plan regarding the reopening of our schools.

We are excited to welcome our students back to school on August 24, whether they attend in-person or virtually!

## Surge of COVID-19 TX cases drives S&P 500 down 2.86%

The Markets

The stock market hates uncertainty, particularly when the risk of bad news rises, and it got a dose of that out of Texas beginning on Wednesday. The S&P 500 Stock Index (SPX) fell 2.86% for the week to close at 3009.05, down 6.86% year-to-date, -11.14% from its top in February but still up 34.49% from its March bottom and 2.29% from last year at this time. The proximate cause of its retreat to the bottom of its recent trading range was the surge in COVID-19 cases in Texas and to a lesser degree, in Florida. Cases diagnosed can be affected by increased testing, and that may be the case in Florida, but in Texas the surge in confirmed infections is matched by an equally compounding number of hospitalizations and filled ICU beds. Hospitalizations

## Market & Economic Update

By Jeffrey W. McClure



are the gold standard for this disease, and they are setting new records.

The U.S. 10-year Treasury note yield followed the SPX down 6.9% to 0.647%, dropping to a low point not seen since mid-May. Despite the slide, the Treasury yield curve remains positive, stubbornly forecasting better times to come in 2021. West Texas Intermediate crude oil (WTI) fell 3.5% for the week to \$38.19.

The Economy

The finely-honed economic data that we normally rely on to tell us where we were a month or so ago has long sufficed to give us a series of dot-points from which we can usually chart the course ahead, but not in this crisis. In an economy where over 2/3 of our GDP depends on consumer spending, the personal consumption report is a vital sign that rarely changes much from month to month, and at this point notably is published about a month after the fact. The Commerce Department announced on Friday that the amount Americans spent on goods and services in the month of May rose a record-breaking 8.2%. That sounds positively euphoric until one realizes that before rising that much, it had first fallen 20% in the previous three months, leaving personal consumption still down 12%. More, that surge in spending coincided with the \$1,200 per person plus \$500 per dependent stimulus checks. All things considered; it is unlikely that bump up in consumption will be sustainable but only time will tell. Meanwhile, though economically we may have hit bottom and be in a nascent recovery, about 1.5 million jobs are being lost each week, and that is net of hiring.

In another bit of good news that likely is sustainable, the Federal Reserve's bank stress tests found that even in a worst-case scenario, the largest American banks are in good shape to weather the storm. It went on to halt any dividend increases or increased share buyback actions by banks for the rest of the year, instructing financial institutions to build up their reserves against a second infection wave in the fall with an attendant second lockdown. Americans are already heeding that Fed directive as the Bureau of Economic Analysis reported that the U.S. personal savings rate for May was 23.2% even as personal disposable income fell 4.9% and expenditures rose. This is a most peculiar economy. The data matches

up well with studies that confirm it was primarily hedge funds and privately managed accounts that led the panicked stock market collapse in February and March while the average retail investor kept calm and did not run from a falling market.

On Thursday, June 25, the U.S. reported a single day new high in diagnosed COVID-19 cases at nearly 40,000 and worse, has now clearly returned to a compounding increase in infections nearly as steep as it was in the worst days of the pandemic spread. Almost 6,000 of those new cases on Thursday were in Texas. In the United States about 125,000 people have died from the disease. The surge in COVID cases in Texas is bad. In Houston the number of hospitalized COVID patients is 47% higher than a week ago and health officials are warning that Harris County could run out of ICU beds in ten days. Tracing has revealed that many Texans are just not taking the threat seriously. Most are not wearing masks and are attending parties and other gatherings where the virus is being spread. Let us forget, the coronavirus is still among us and, at least in Bell County is still expanding at about 6.6% per day and the deaths with it. The number of deaths here in Bell County have doubled in about ten days.

This crisis is not over. Many Americans get this but unfortunately more than a few appear to not. As we have written before, a relatively smooth economic recovery is dependent on three things. First, the Federal Reserve must remain supportive of the economy, and it has committed to do so. Second, Congress must renew the fiscal support and stimulus funding that is to run out next month. Third, we the people must behave responsibly and slow the spread of the virus. Unfortunately, the last two are in question at this point. Senate Republicans are expressing doubt that further stimulus is needed and, based on what we have seen in Texas so far, many folks are aiding and abetting the pandemic's spread.

None of this changes our opinion that in a year or so, this unpleasantness will be well on the way to being history and we will find ourselves in the opening stages of one of the biggest economic booms in our history. What happens between now and then is in our collective hands.

Salado Village Voice, 213 Mill Creek Drive, Suite #125 • P.O. Box 587, Salado, TX 76571  
Phone: 254/947-5321

Salado Village Voice is published weekly every Thursday by Salado Village Voice, Inc., 213 Mill Creek Dr, Suite #125, PO Box 587, Salado, Texas 76571. Periodicals postage paid at Salado, Texas. Periodicals permit #02527. POSTMASTER: Please send address changes to Salado Village Voice, PO Box 587, Salado, TX 76571. Subscription Rates: \$26 per year in Bell County, \$28 per year outside of Bell County; \$38 per year outside of Texas.

Office Hours: 9 a.m.-5 p.m. weekdays  
News releases: [news@saladovillagevoice.com](mailto:news@saladovillagevoice.com)  
Display advertising: [advertising@saladovillagevoice.com](mailto:advertising@saladovillagevoice.com)  
Classified advertising: [classifieds@saladovillagevoice.com](mailto:classifieds@saladovillagevoice.com)

**Deadlines:** Display ads • noon Fridays    Classified ads • noon Mondays

Editorial policies: Opinions on the editorial pages are those of the writer, not necessarily the owners or employees of the Salado Village Voice. All letters to the editor should be signed and have a phone number and address for verification. The editor reserves the right to reject and/or edit any letter. Letters should be limited to 300 words. We DO NOT publish poems in our Letters to the Editor.

**Letters to the editor can be emailed to [news@saladovillagevoice.com](mailto:news@saladovillagevoice.com) or mailed to Salado Village Voice, PO Box 587, Salado, TX 76571.**

**They can be delivered to 213 Mill Creek Dr., Suite #125.**

Tim Fleischer, Editor-in-Chief  
[news@saladovillagevoice.com](mailto:news@saladovillagevoice.com)

Marilyn Fleischer, Managing Editor  
[advertising@saladovillagevoice.com](mailto:advertising@saladovillagevoice.com)  
Royce Wiggin, Administrative Assistant  
[rwiggin@saladovillagevoice.com](mailto:rwiggin@saladovillagevoice.com)

**TPA** MEMBER 2020  
**TEXAS PRESS ASSOCIATION**

Call me today for a no-obligation quote!  
**254.947.0995**

**Rita Zbranek**  
Your Local Farmers Agent  
40 S. MAIN ST.  
SALADO, TX 76571  
[RZBRANEK@FARMERSAGENT.COM](mailto:RZBRANEK@FARMERSAGENT.COM)

**FARMERS INSURANCE**

**TROY L. SMITH FINANCIAL**

Offering general securities through HilltopSecurities Independent Network Inc. Member: FINRA/SIPC

OFFICE: (254) 947-0376  
TROYLSMITH.COM  
101 Salado Plaza Drive  
Salado, Texas 76571

# THE PERSONAL WEALTH COACH

*Family Wealth Management*  
**An SEC Registered Investment Adviser**

- ★ Objective Independent Investment Advice
- ★ Highly Personalized Portfolio Design and Management
- ★ Listen to our radio show on KTEM 1400 AM every Saturday from 10 till noon

*Jeffery W. McClure, CFP®*      *Jacob A. McClure, CIMA®*  
**Serving Investors Since 1982**

P.O. Box 1029 | 918 N. Main St., Salado, Texas 76571      947-1111 or 1-800-914-7526

**[www.thepersonalwealthcoach.com](http://www.thepersonalwealthcoach.com)**



# Bell County Museum Presents: Historic Bell County Through the Lens of Margaret Bowles Williamson

The Bell County Museum opened temporary exhibit Historic Bell County Through the Lens of Margaret Bowles Williamson to the public. The exhibition will feature several collections of photographs by Bell County native Margaret Bowles Williamson. Her silver gelatin prints offer a unique view of historic Bell County including the area's historic churches, architecture, and a unique collection documenting Bowles family history. This includes family photographs paired with family heirlooms. The exhibit will also include some of the artifacts highlighted in the photographs.

A resident of Salado, Margaret grew up in Belton. She has a long-standing love of photography, and studied for several years with David Hansen, professor of photography at Temple College. Her work has been included in art exhibitions across the state and is held in the permanent collection of the Bell County Museum, the Museum of Fine Arts in Houston, and Houston Methodist Hospital.

Museum visitors should be aware of COVID-related precautions in place for the protection and safety of visitors and staff. The museum is disinfected daily, staff take social distancing precautions, visitors are strongly encouraged to observe social distancing, and exhibit spaces have limited capacity. Groups larger than ten people are encouraged to call the museum ahead of time at (254) 933-5243.

The Bell County Museum is located at 201 N. Main St., Belton, Tx. 76513. Hours are Tuesday-Friday 12-5 p.m., and Saturday 10 a.m.-5 p.m. Admission is free.



## Mayberry named to Troy U. Provost's List

Shelia Mayberry of Salado, has been named to the Provost's List at Troy University for the Spring Semester/Term 4 of the 2019-2020 academic year.

The Provost's List honors full-time undergraduate students who are registered for at least 12 semester hours and who have a GPA of at least 3.65.

Students who are registered for at least 12 semester hours and who have a GPA of at least 3.65.

### Will-O-Bell Nursing Home

412 N. Dalton (Hwy 95)  
Bartlett, TX 76511      (254) 527-3371

**Not all nursing homes are the same  
Before you decide,  
Stop by and visit  
Will-O-Bell**

We know it is often difficult to move and leave familiar surroundings. Our friendly, attentive staff will make the transition easier for you. In our warm, caring and secure environment, you will find privacy, companionship, delicious meals, fun activities and a professional staff to meet your needs.

[www.will-o-bell.com](http://www.will-o-bell.com) or email us for a free brochure at [penny\\_brant@willobell.com](mailto:penny_brant@willobell.com)

**Private Room Rates**  
Starting at  
**\$142.50 per day**

**Adult Day Services**  
Monday-Friday  
7 a.m. - 6 p.m.  
for only  
**\$85 per day**

**St. Joseph's Episcopal Church**

Sunday School  
Sun. 9 a.m.  
Holy Eucharist  
Sun. 10 a.m.

881 North Main Street  
(254) 947-3160  
[StJosephSalado.org](http://StJosephSalado.org)

**St. Stephen Catholic Church**

Religious Education  
Classes - Wednesday  
K thru 12<sup>th</sup> 5:30 - 8 p.m.

**Mass Schedule**  
Tuesday - 6 p.m.  
Wed & Thurs - 8:30 a.m.  
Friday - Noon  
Saturday - 5:30 p.m.  
Confessions 4:30-5:15 p.m.  
or call for an appointment

**Friday**  
Adoration (Holy Hour) 11 a.m.

**Sunday**  
(English) 9 a.m.  
(Spanish) 11 a.m.

Office Hours: Monday - Friday  
9 a.m. - Noon & 1:30 - 3 p.m.

**601 FM 2268**  
**947-8037**  
[www.saintstephenchurch.org](http://www.saintstephenchurch.org)

*Broecker*  
FUNERAL HOME  
....serving those who love and remember

949 West Village Road, Salado  
[BroeckerFuneralHome.com](http://BroeckerFuneralHome.com)      (254) 947-0066

**THE VILLAGE CHURCH**  
Salado, TX

**Meets on Sundays at 10:00 am at  
the Salado High School Cafeteria**

**Come as you are!**

**Pastor Billy Johnson.....972-978-2239**

**Presbyterian Church of Salado**

A Friendly, Small Church with a Message

**What others say about the church:**  
"The way church used to be."  
"Old favorite hymns that are meant to be sung."  
"The Message is from the Bible in context."

**Sunday Services 10 a.m.**  
Adult Sunday School at 9 a.m.

**Men's Prayer Breakfast Tues 8 a.m.**  
**Chair Yoga Tuesday 1 p.m. | Thurs 10:30 a.m.**  
**Choir Practice on Wednesdays at 5:30 p.m.**  
*Rev. Carl Thompson, Pastor*  
105 Salado Plaza Drive  
from the intersection of Main and Salado Plaza Drive,  
South to the first drive on the right  
[presbsalado.org](http://presbsalado.org)      (254) 308-2023



## LET US CLEAN THE BULL OUT OF YOUR CLOTHES!

Dry Cleaning • Alterations • Laundry • Wash & Fold • Military TA-50

Superior

DELUXE CLEANERS

PICK UP  
DROP OFF  
AVAILABLE

254-554-7554

**KILLEEN LOCATION:**  
2006 N. WS YOUNG DR., #40  
KILLEEN, TX 76543  
EMAIL:  
[SUPERIORITY2006@gmail.com](mailto:SUPERIORITY2006@gmail.com)  
Facebook @  
Superior Deluxe Cleaners

**SALADO LOCATION:**  
213 MILLCREEK DR.  
SALADO, TX 76571  
(254) 947-1100

**CO-VID 19 Compliance**



LASTOVICA

Fine Jewelers, Inc.

*"Known for Service"*

**Prompt In-Store Jewelry Repairs**

Diamond Sales • Custom Casting • Diamond Appraisal • Watch Repair • Diamond Setting  
Jewelry Repair

**1202 S 31st St. & Ave. L • Temple**  
**773-5772**

Dossman  
Funeral Home

IN SERVICE TO OUR FELLOW MAN

933-2525

serving all of Bell County

DossmanFH.com

2525 N. Main • Belton



# Brookshire Brothers launches Click and Collect in Salado

**COFFEE WITH CHRIST**

Join Us SALADO CREEK MINISTRIES

**9 a.m. Sundays**  
**Holiday Inn Express**  
**I-35 & FM 2484 Salado**  
**www.saladocm.org**



Touchless grocery comes to Brookshire Brothers. The Lufkin-based grocer launched its curbside pickup and grocery delivery service June 29 at its Salado store.

Brookshire Brothers has been offering this service in seven locations since February 2018.

With the increased demand for online shopping, the employee-owned company decided to launch Brookshire Brothers Anywhere in fourteen additional locations.

Brookshire Brothers President and CEO John Alston said, "We strive to continually provide services our customers want and expect. COVID-19 showed us all the importance of touchless retail. People who'd previously been slow adopters of online ordering and curbside pickup, became



the most frequent users of Brookshire Brothers Anywhere in the communities

where we offer it." Some of the friendly faces that currently serve custom-

ers at the Mill Creek Dr. location will now be personal shopping experts. Once a customer submits their online order, our 'pickers' will personally do the grocery shopping, selecting the best of the best for their customers, just like they were doing their own grocery shopping. The platform also enables customers to interact with their personal shoppers. Customers can make note of how green they want their bananas or how thick they like their steaks. It becomes a two-way conversation. To start shopping go to <https://www.brookshirebrothers.com/anywhere>. Curbside is free at this time, and if you use the code FREEDELIVERY, you'll get your first home delivery free.

**3C Cowboy Fellowship**

16258 Gooseneck Road, Salado  
**Church service starts 10 am**  
**(254) 947-7211**  
**www.3ccowboyyfellowship.org**  
 Follow events on our website calendar

## Central Texas Food Bank will distribute free food

The Central Texas Food Bank will distribute free food to help those in McLennan and Bell Counties who are facing increased food insecurity during the COVID-19 pandemic.

Dates for the special food drive are these:

McLennan County: Waco ISD Stadium, 1401 S New Rd., Waco, TX 76711, 10 a.m.-Noon on July 2.

Bell County: Temple College, 2600 South 1st Street, Temple, TX 76504 9-11 a.m. July 18.

At these special drive-through food distributions, attendees will receive (actual contents may vary depending on availability):



§ One box of assorted produce

§ 1-2 gallons of milk

§ One protein box weighing between 8 - 20 pounds containing chicken or pork products

To adhere to social distancing requirements, pickup will only be available to those with cars. No walk-ups will be allowed. Please make appropriate space in your trunk or hatch before arriving at the event. Attend this event only if you are facing true food insecurity since our resources are stretched to the limit.

The Food Bank needs volunteers to assist with these events. Anyone interested in volunteering to support these special distributions should visit the Food Bank's website, [centraltexasfoodbank.org](http://centraltexasfoodbank.org), and click on "Volunteer" to sign up. Volunteers proficient in Spanish are also needed for client intake. To sign up for this role, email [volunteer@centraltexasfoodbank.org](mailto:volunteer@centraltexasfoodbank.org).

During the COVID-19 pandemic, the Central Texas Food Bank is continuing to meet the needs of those facing hunger.

In addition to these special distributions, Central Texans in need can also access food through our network of partner pantries and mobile food pantry dis-


tributions throughout Central Texas. For the latest information on getting help, go to [centraltexasfoodbank.org](http://centraltexasfoodbank.org) and click on "Find Food Now". Once you find the distribution site nearest you, please call them to confirm their hours of operation since things are changing rapidly. You can also call 2-1-1 for the latest information.

The Food Bank stands ready to help all Central Texans affected by the pandemic, but we've seen demand for our services skyrocket recently, severely straining our resources. So if you're able to help, we need monetary donations. Please donate at [centraltexasfoodbank.org](http://centraltexasfoodbank.org).

The mission of Central Texas Food Bank is to nourish hungry people and lead the community in the fight against hunger. Founded in 1981, the Food Bank provides food and grocery products through a network of nearly 300 Partner Agencies and nutrition programs, serving nearly 50,000 people every week. Headquartered in Austin, the Food Bank serves 21 counties in Central Texas, an area about twice the size of Massachusetts. For more information on the Food Bank and its programs, visit [centraltexasfoodbank.org](http://centraltexasfoodbank.org).

**ENCOUNTER GOD.  
 BE EQUIPPED WITH TRUTH.  
 ENGAGE THE WORLD.**

Worship with us Sunday at 10:30am just two miles west of Salado High School on FM 2484.  
[gracesalado.com/visit](http://gracesalado.com/visit)



**GRACE CHURCH SALADO**

JOIN SALADO UMC FOR

*Online Worship,  
 Devotionals, & Bible Study*

SALADOUNC.ORG/WORSHIP-ONLINE  
 FACEBOOK.COM/SALADOUNC  
 & YOUTUBE - SEARCH "SALADO UMC"

**ALL ARE WELCOME  
 TO TAKE PART IN SUMC'S  
 DRIVE THROUGH COMMUNION**

Sunday, July 5th / 10 - 11 am  
 SUMC Parking Lot

*PLEASE ENTER THE SUMC CHURCH CAMPUS ON THE SOUTH SIDE NEAR THE CHAPEL AND FOLLOW THE SIGNS.*



**FIRST Baptist Salado**

[www.fbcsalado.org](http://www.fbcsalado.org)  
**(254) 947-5465**  
 Main St. at the Creek Dr. Travis Burleson, Senior Pastor


**Worship at 8:30am & 11am**  
**No Sunday School**  
**No child care but all children are welcome!**

[fbcsalado.org](http://fbcsalado.org)  
[facebook.com/fbcsalado](https://www.facebook.com/fbcsalado)  
**Youtube:**  
[https://www.youtube.com/channel/UCjZiKbJHYq\\_mW3TbJo0\\_qpA](https://www.youtube.com/channel/UCjZiKbJHYq_mW3TbJo0_qpA)

**Salado Church of Christ**

*Come find out why our church family is driven by the same purpose Jesus gave to all his disciples -*

*to love God completely,*  
*to love our neighbors*  
*(as we love ourselves),*  
*and to serve all the above.*  
*You are always welcome!*



*Love God*  
*Love Others*  
*Serve ALL*

**947-5241**  
**IH-35 at Blacksmith Rd.**  
**www.saladochurchofchrist.com**

**Sunday**  
 Bible Classes • 9 a.m.  
 Worship • 10 a.m.  
 Spanish Worship - Call Church for times

**Wednesday**  
 Bible Classes • 6:30 p.m.





An aerial view of Salado Middle School, which will open to Salado ISD students this Fall. Salado ISD is offering two options for school students to return. (Courtesy photo)

**Support Salado Youth**  
by supporting their newspaper.  
**Salado Village Voice.**  
**Call 254-947-5321**  
to advertise here.

**SALADO CLEANERS**

Laundry · Dry Cleaning · Alterations



**1209 N. Stagecoach**  
(Next to the Library)  
**254-947-7299**

7 a.m. - 7 p.m. Mon - Fri • 7 a.m. - 3 p.m. Sat

**Wash & Fold**



**BACK OR NECK PAIN?**  
**WE CAN HELP!**



Most Insurances Accepted!

213 Mill Creek Dr., #195, Salado  
IntegrityRehab.net  
254.699.3933



# SISD will offer 2 options for returning to school

By **TIM FLEISCHER**  
EDITOR-IN-CHIEF

Salado parents will have two options for their children to return to school in Salado ISD for the 2020-2021 school year.

Salado ISD announced last week that it will be providing an option for full-time in-person attendance on campuses, with heightened hygiene and disinfection protocols and an option for full-time remote instruction with the student working from home.

Superintendent Michael Novotny said that the district is “hoping to receive guidance from the Texas Education Agency” concerning protocols for social distancing, hygiene and disinfection with reopening the schools on Aug. 24.

Dr. Novotny said that a committee will begin work in July on social distancing,

hygiene and disinfection protocols for Salado staff and students.

“We will be putting together a committee comprised of parents, teachers and administrator to develop a reopening plan which includes the areas and topics in which we do not receive a directive or guidance from the Texas Education Agency,” Dr. Novotny said.

The state is using funds to provide personal protective equipment (PPE) to school district. With those funds, Salado ISD will receive the following allotment: 18,576 disposable masks (of which 5,572 will be student size and 13,003 will be adult size), 4,644 reusable masks (of which 1,290 will be student size and 3,353 will be adult size), 7,990 gloves, 15 thermometers, 218 gallons of hand sanitizer, and 235 adult face shields.

Implementing additional

safety measures and social distancing standards could affect the school budget for 2020-2021, which was adopted June 29. “We could have additional expenses related to increased safety measures and providing remote instruction along with traditional in person instruction,” Dr. Novotny said. “We could have some savings if we are not able to have full schedules for our extracurricular activities.”

“We have not included any of these possible changes in our 2020-2021 budget because there still isn’t enough information to know which of these will impact our budget, and to what extent,” he said. “We will make budget amendments as necessary so we can continue to meet the needs of our students while being fiscally responsible with taxpayer dollars.

Regardless of whether

a parent chooses the on-campus or remote option for his child, “all students will be required to engage in all classes every day.

“The assignments and grades will be the same for both on campus and remote instruction,” Dr. Novotny said. “All grades will count towards class promotion, grade point average and class rank.”

“We have hired an instructional technology specialist to help us improve our remote instruction,” Dr. Novotny said. We will provide additional details regarding the openings of our schools in August as we receive additional information from federal, state, and county health officials.

A survey was sent to Salado parents last week. Dr. Novotny discusses some of those preliminary results in this week’s column.



## Salado Family and Cosmetic Dentistry

Preventive care for children and adults  
Teeth whitening | Implant Restoration  
Veneers & Cosmetic Crowns  
Conscious & Full Sedation Dentistry Available

**Douglas B. Willingham, D.D.S.**  
(254) 947-5242

**SaladoFamilyDentistry.com**  
in the historic Armstrong Adams House c. 1868



Sara Yeager, Kim Newton  
Dr. Willingham, Cynthia Gandara

2 North Main Street at Thomas Arnold Road

**Devereaux Jewelers**  
PROFESSIONAL APPRAISAL & REPAIR SERVICES  
254-771-1260  
DEVEREAUXJEWELERS.COM  
1316 WEST AVE. M | TEMPLE

**WE BUY SCRAP GOLD & SILVER**  
**BUY SELL TRADE**  
Gold, Silver, Coins, Currency & Jewelry  
(254) 699-2646  
Locally Owned - Salado Resident  
**Texas Coin Connection**  
108 E FM2410, Suite G - Harcker Heights



**Now Open**

According to capacity guidelines

213 Mill Creek Drive, Suite 155  
Salado | 254-947-1063

anytimefitness.com



**DONRINGLERCHEVROLET.COM | 254-774-6500**  
**EXIT 294B OFF I-35 BETWEEN BELTON AND TEMPLE**

**DON RINGLER CHEVROLET**  
**FAMILY PLAN**  
**\$3,000 ADVANTAGE**  
**COMPLIMENTARY**  
WITH EVERY NEW VEHICLE PURCHASE!

- 24/7 ROADSIDE ASSISTANCE
- WINDSHIELD REPAIR
- PAINTLESS DENT REPAIR
- KEY & REMOTE RECOVERY REPLACEMENT
- INTERIOR DAMAGE REPAIR
- OWNER REWARDS PROGRAM
- LOANER CARS

Family Plan is complimentary for 1 year. Option to purchase extension is available. The new vehicles cannot be part of a rental or commercial fleet, company vehicle or livery/taxi vehicle.



# Salado I.S.D. Budget Comparison

BUDGET BY FUNCTION	Adopted 2018-19	Adopted 2019-2020	Final 2019-2020	Adopted 2020-2021
<b>Total Tax Rate</b>	<b>\$1.2238</b>	<b>\$1.47</b>	<b>\$1.47</b>	<b>\$1.4264</b>
<b>M&amp;O Rate/I&amp;S Rate</b>	<b>\$1.040/\$0.1838</b>	<b>\$0.97/\$0.50</b>	<b>\$0.97/\$0.50</b>	<b>\$0.9264/\$0.50</b>
<b>Total Enrollment</b>	<b>1964</b>	<b>2055</b>	<b>2055</b>	<b>2160</b>
<b>GENERAL OPERATING MAINTENANCE &amp; OPERATION</b>				
<b>Revenue</b>				
Local	8,632,264	9,593,561	9,281,049	10,069,859
State	6,349,931	7,682,356	8,541,390	9,109,903
Federal	104,275	30,160	26,549	118,029
<b>Total Revenue</b>	<b>15,086,470</b>	<b>17,306,077</b>	<b>17,848,988</b>	<b>19,297,791</b>
<b>Expenditures</b>				
Instruction	8,270,726	8,973,839	9,430,000	10,739,164
Instruction Resources	223,720	203,562	210,000	208,329
Curriculum & Staff Dev.	117,473	132,949	120,000	123,944
Instructional Leadership	68,071	130,551	190,200	279,791
School Leadership	830,841	926,522	980,000	1,002,860
Guidance/Counseling	408,114	430,709	500,000	728,258
Social Services	24,410	24,899	24,899	25,396
Health Services	112,924	117,855	125,000	161,222
Student Transportation	686,082	701,619	800,000	926,561
Co-Extra-Curricular	1,173,717	1,256,423	1,369,203	1,353,648
General Administration	645,021	653,504	616,736	602,356
Plant Maint/Operation	1,653,404	1,620,120	1,685,000	1,974,002
Security Monitoring	21,220	71,198	80,148	69,100
Data Processing	422,950	403,238	410,726	555,019
Debt Service	77,797	77,799	134,858	237,257
Facilities Acquisition/Const.	0	1,087,207	700,000	0
Payments to Fiscal Agents	247,000	254,000	270,000	96,416
Payments to other Gov'ts.	103,000	120,428	137,218	134,614
Operating Transfers out	0	119,655	65,000	79,854
Expenditure Total	15,086,470	17,306,077	17,848,988	19,297,791
Change in Fund Balance	0	0	0	0
<b>FOOD SERVICES</b>				
<b>Revenue</b>				
Local	273,000	259,000	161,295	300,000
State	16,506	18,607	17,071	21,296
Federal	223,330	231,761	221,202	241,761
Operating Transfers In	0	119,655	65,000	79,854
<b>Revenue Total</b>	<b>512,836</b>	<b>629,023</b>	<b>464,568</b>	<b>642,911</b>
<b>Food Service Expenditures</b>				
	<b>547,639</b>	<b>629,023</b>	<b>553,417</b>	<b>642,911</b>
Change in Food Service Fund Balance	-34,803	0	-88,849	0
<b>DEBT SERVICE</b>				
<b>Revenue</b>				
Local	1,483,348	4,894,542	4,650,565	5,764,574
State	35,502	0	34,400	0
<b>Revenue Total</b>	<b>1,518,850</b>	<b>4,894,542</b>	<b>4,684,966</b>	<b>5,764,574</b>
<b>Debt Service Expenditures</b>				
	<b>1,346,950</b>	<b>4,110,477</b>	<b>4,266,656</b>	<b>4,033,250</b>
Payment to Bond Escrow Agent				1,731,324
Change in I&S Fund Balance	171,900	784,065	418,310	0

# Trustees adopt 2020-21 budget

By TIM FLEISCHER  
EDITOR-IN-CHIEF

Salado school trustees on June 29 approved a \$19.3 million general operating budget for 2020-2021 school year. The trustees conducted a public hearing on the budget prior to adopting it. The board also conducted a public hearing on the proposed tax rate of \$1.4264.

The proposed tax rate of \$1.4264 is the highest allowed by state law without a local tax election. Trustees will adopt the tax rate at a meeting in Aug. The board may adopt a lower rate than the proposed rate, but cannot adopt a rate that is higher than the proposed rate, without going through the notice process again.

The 2020-21 adopted budget is \$2 million more than the 2019-20 adopted budget of \$17.3 million and \$4.1 million more than the 2018-19 budget of \$15.1 million. Student enrollment in 2018-19 was anticipated at 1,964, while actual enrollment in May 2019 was 1,956. Enrollment in 2019-2020 was budgeted at 2,055, while actual enrollment for May 2020 was 2,056. Enrollment in 2020-21 is budgeted at 2,160.

The adopted budget increases state revenues by \$1.4 million to \$9.1 million and increases local funds by \$470,000 to \$10.1 million.

The largest increase in expenditures is in Instruction, from \$9 million to \$10.7 million. School leadership increases by \$76,000 while guidance and counseling increases \$298,000. Instructional leadership will double in cost to \$280,000 from \$130,500 last year. Extra curricular will increase almost \$100,000 to \$1.4 million. Plant Maintenance will increase substantially with the opening of the Middle School to \$2 million from \$1.6 million.

The operating budget

has grown from \$12.7 million in 2015-16 with 1,622 enrollment to the \$19.3 million adopted budget for 2020-21.

The board also adopted the Child Nutrition budget (now separate from the M&O budget). The nutrition budget for 2020-2021 is \$642,911, or \$297.64 per student enrolled. In 2015-16, nutrition costs were \$534,973, or \$329.82 per student enrolled. The 2020-2021 is budgeted on \$300,000 in local revenues, \$21,296 in state revenues, \$241,761 in federal revenues and \$79,854 transferred from the M&O budget.

The adopted budget includes a debt service budget of \$5.8 million for 2020-2021, an increase of almost \$900,000 from 2019-20. Since 2015-16, the debt service budget has increased from \$1.4 million to the proposed \$5.8 million. Of that debt service, \$1.7 million is designated as operating transfers out for the early payoff of an existing bond.

In other business, school trustees adopted the final amended budget for the 2019-2020 school year. Chief differences between the adopted budget and the final amended budget is a drop in local revenues of about \$300,000 and an increase in state revenues of about \$900,000.

With the extra \$600,000 in general operating revenues, the district spent almost \$500,000 more on instruction as well as about \$60,000 each on instructional leadership, school leadership and guidance/counseling in 2019-2020. Co-curricular/extra-curricular expenses increase by more than \$100,000 from the adopted budget to the final amended budget amount of 1,369,203.

The district budgeted more than \$1 million in facilities acquisition, but actually spent \$700,000 this year.



**Ace**  
Pest and Lawn

Customer Satisfaction Guaranteed  
Free Estimates  
947-4222  
Locally Owned and Operated  
Licensed by the Structural Pest Control Board TPCL #12512



*Salado's Hair Shop*  
Full Service Salon  
(254) 421-5173  
213 Mill Creek Dr., Suite 160  
Gift Certificates make great gifts  
Credit Cards Accepted

NOW ENROLLING  
**KIDS' ZONE**  
Learning Center

104 Copper Lane, Jarrell 512-746-2333  
105 Western Sky Trail, Jarrell 512-598-3900  
4802 Moreland Drive, Georgetown 512-868-8300

FAMILY-OWNED CHILDCARE CENTERS  
SERVING AGES 0 TO 12 YEARS  
CHILDREN ARE A GIFT FROM GOD -PSALM 127:3

**CENTURY 21** WWW.C21BB.COM

Bill Bartlett  
860 N. MAIN - SALADO, TX  
254.947.5050



Good Luck from your 'Home' Team

**Curbside Pick-up and Delivery**

Bruce A. Bolick, CPA  
(254) 718-7299  
Jennifer Westbrook, EA  
(254) 947-1040  
560 North Main • Suite 4 • Offices A & C  
SaladoCPA@aol.com or SaladoTaxes@gmail.com



**Bouquets**  
**Blooming Plants**  
**Arrangements**

**Brookshire Brothers**  
Floral Department 947-8922

**Vote Steve Duskie for District Judge**  
Early voting starts June 29  
Runoff Election Day - July 14



✓ - Republican  
✓ - Conservative  
✓ - Veteran

Pol. Ad. pd for by Duskie Campaign, Steve Walden, Treas.

**STEVE Duskie**  
Republican for Judge ★ 426th District Court



# Despite funding increase, Texas trails other states in pay, per-student spending

The new school finance legislation enacted last year improved Texas' national rankings in education spending, but Texas still trails many states and the District of Columbia in average teacher pay and the amount of spending per student, according to a new report on state-by-state education spending compiled by the National Education Association (NEA).

Average teacher pay in Texas increased from \$54,121 in 2018-19 to \$57,091 during the recently completed 2019-20 school year, a gain of 5.5 percent. That moved Texas up two notches, from 28th to 26th, among the states and the District of Columbia, but teacher pay in Texas still trails the national average of \$63,645 by more than \$6,500.

"We are happy that the Legislature increased funding for public education and set aside money for pay raises last year, but obviously we still have a long way to go to provide all school children and educators the resources they need to keep our state moving forward in the 21st century," Texas State Teachers Association

President Noel Candelaria said.

The Legislature ordered school districts to give teachers raises and set guidelines, including preference for more-experienced teachers. But lawmakers didn't set the size of the raises, and pay increases varied among districts.

NEA's calculations, based on data collected from the Texas Education Agency, found that average teacher pay in Texas has increased 17.4 percent in current dollars since 2010-11, the last school year before the Legislature slashed \$5.4 billion from the public education budget to help stem a revenue shortfall in 2011. In adjusted constant dollars, though, Texas teachers have seen an average pay increase of only 1.1 percent over that period, NEA said.

The NEA report, updated annually, said that spending per public school student in average daily attendance (ADA) in Texas increased by an estimated \$830 for the 2019-20 school year, an increase of almost 8 percent over 2018-19.

The new spending estimate of \$11,415 per student moves Texas to 37th among

the states and the District of Columbia in that key measure of education support, up from 42nd a year ago. Texas still trails the national average of \$14,254 by an estimated \$2,839 per child, but by a smaller gap than in 2018-19.

Candelaria noted that the Legislature, even as it was boosting education funding, unnecessarily restricted the ability of school districts to meet future needs by putting a 2.5 percent cap on annual increases in property tax revenue, the districts' only source of local funding. That cap will make budget-setting even more difficult for school boards as Texas works to recover from economic losses from the coronavirus pandemic.

"We know legislators will face budgetary challenges stemming from the pandemic, but we urge them to remember Texas needs a strong education system to lead the way to long-term economic recovery," Candelaria added.

The Texas State Teachers Association is an affiliate of the National Education Association.

# TSTA: Let's continue timeout on STAAR

As Texas school districts struggle with issues related to COVID-19 at the mandated reopening of public schools this fall, the Texas State Teachers Association is calling on Texas Education Agency to continue the timeout on the STAAR Test.

On June 30, TSTA President Noel Candelaria released the following statement on the decision to require STAAR testing next year:

"We are in the middle of a health emergency, we don't even know for sure what form education is going to take this fall, and

the state education commissioner has announced that STAAR testing will resume. The Texas State Teachers Association has a better idea: Let's continue the time out on STAAR testing.

"Standardized testing should be the last priority for students, educators and policymakers," Candelaria added. "There are other, much more crucial priorities for the state, beginning with a plan for safe schools, a plan for returning students, teachers and employees safely to classrooms, but only after the pandemic has begun to subside, not while

COVID cases are still increasing."

"Even under normal circumstances, STAAR exams waste millions of tax dollars, and that waste will be even more critical now that the state and school districts will be suffering millions of dollars in lost revenue from the pandemic," he said. "Our schools can't afford the loss of more tax dollars on testing, and our students and educators can't afford the distraction as they continue to adjust to new methods of teaching and learning. Let's close the learning gap, not enrich testing companies."

## CALL LORRAINE TODAY FOR YOUR FREE MORTGAGE CONSULTATION



**Lorraine Basham**  
Loan Originator  
NMLS #415114  
Office: 254-947-3454  
lorraineb@fairwaymc.com  
www.lorrainebasham.com

- Competitive Rates
- Fixed and Adjustable Rate Mortgage Loans
- Conventional, FHA, VA & USDA Financing
- Mortgages for Home Owners and Investors
- Home Equity Loans
- Down Payment Assistance for Qualified Buyers

Copyright © 2019 Fairway Independent Mortgage Corporation. NMLS#2269, 4750 S. Blinn Lane, Madison, WI 53718, 1-866-912-4500. All rights reserved. This is not an offer to enter into an agreement. Not all customers will qualify. Information, rates and programs are subject to change without prior notice. All products are subject to credit and pre-approval. Not all products are available in all states or in all dollar amounts. Other restrictions and limitations may apply. Equal Housing Lender. TX, Location: 1900 Golden Trail, Carrollton, TX 75010.

## JD's Grill inside JD's Travel Center

**OPEN Daily**  
**Breakfast & Lunch**  
**6 a.m. - 2 p.m.**

**Restaurant Closed temporarily but...**

**Great gas prices**  
**Literally, the best in town!**

**(254) 947-5228 15881 South IH 35, Salado**  
**Take I35 Exit South 283 or North 282**



## CARUS DENTAL



### Ron Henderson, DDS

Dr. Henderson provides general dentistry services including: crowns, bridges, implants, fillings, root canals and dentures

477 Thomas Arnold Road, Salado

**254-947-8067**

**CarusDental.com**

## Brody's Mill Creek Clubhouse

**OPEN TO THE PUBLIC**  
**Sun - Mon 7 a.m. - 6:30 p.m.**  
**Tues - Thurs 7 a.m. - 8 p.m.**  
**Fri - Sat 7 a.m. - 9 p.m.**

**Dine-in or call for Carry Out**  
**(254) 654-7885**

27 unforgettable holes of Golf designed by Robert Trent Jones, Jr.



MillCreekGolf27.com

(254) 947-5698



## Book Your Tee Time Today

**OPEN TO THE PUBLIC**

Practice Facility

Memberships Available

Focus on what matters...



Let us handle the rest!



**SALADO**

40 N Main St, Salado, TX 76571  
254.947.8480 Phone | 254.947.9480 Fax

By appt. only closing offices in Jarrell, Copperas Cove and Gatesville

Servicing Bell, Coryell and Williamson Counties



## Benny's Ristorante Italiano

17 South Main Street, Temple

254.771.0169

www.BennysRistoranteItaliano.com



# NOTICE OF PUBLIC HEARING

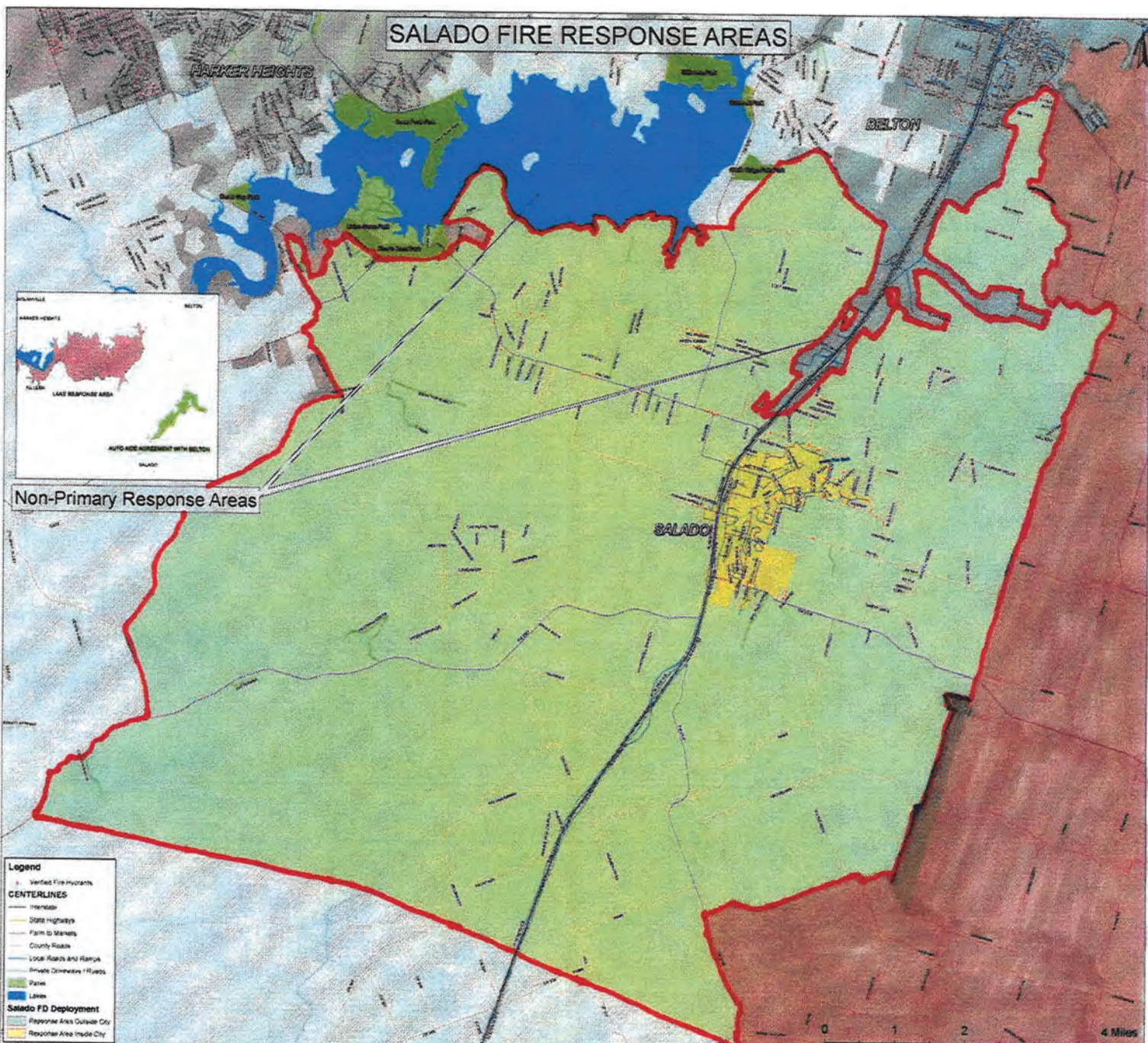
Pursuant to Texas Health & Safety Code 775.015, the County Clerk of Bell County, Texas hereby provides notice of a public hearing to be held on the creation of the proposed Bell County Emergency Services District No. 1. This public hearing will be held at 9:00 a.m. on Monday, July 20, 2020, at the Bell County Historic Courthouse, 2nd Floor Courtroom, at 101 E. Central Avenue in Belton, Texas. Each person who has an interest in the creation of the district may attend the hearing and present grounds for or against the creation of the district.

A petition for the creation of an emergency services district has been filed with the County Clerk of Bell County, Texas and the creation of an emergency service district is proposed.

The district is to be created and is to operate under Article III, Section 48-e of the Texas Constitution, as proposed by S.J.R. No. 27, Acts of the 70th Legislature, Regular Session, 1987, and adopted by the voters at an election held November 3, 1987.

The name of the proposed district is Bell County Emergency Services District No. 1. It is to be created and is to operate under Article III, Section 48-e, Texas Constitution, and Chapter 775, Texas Health and Safety Code, for the provision of fire suppression and medical response in response to an emergency situation in accordance with the authority granted to emergency service districts under Chapter 775 of the Texas Health and Safety Code.

The district's boundary map is attached hereto, and incorporated herein for all purposes as Exhibit A. Upon request, the metes and bounds are available for public viewing in the County Clerk's Office during regular business hours and on the public notices page of our website at [https://www.bellcountytexas.com/publicnotice\\_list.php](https://www.bellcountytexas.com/publicnotice_list.php).



## Proposed Bell County Emergency Services District No. 1 Boundary Description:

The proposed Emergency Services District being comprised of one distinct area of South Bell County, State of Texas.

Beginning at a point of Intersection of the North Williamson County Line with the South Bell County Line, with the centerline of Farm-to-Market Road 2843, State of Texas;

Thence, Northerly along the centerline of Farm-to-Market 2843 to the intersection of Cedar Valley Road.

Thence, Northerly along the centerline of Cedar Valley Road, to the intersection of Crows Ranch Road.

Thence, Northerly along the centerline of Crows Ranch Road, to the intersection of Eagle Nest Road.

Thence, Northerly along the centerline of Eagle Nest Road, to the intersection of Farm-to-Market 2484.

Thence, Northerly along the centerline of Farm-to-Market of 2484, to the intersection of Farm-to-Market 3481.

Thence, Northerly along the centerline of Farm-to-Market 3481, to the City of Killeen City Limit Boundary.

Thence, following the contours of the City of Killeen City Limit boundaries, to the Southern Shoreline of Stillhouse Hollow Reservoir.

Thence, following the contours of the Southern Shoreline of Stillhouse Hollow Reservoir, to the Southern edge of the Stillhouse Hollow Reservoir Spillway/US Army Corps of Engineers property line.

Thence, Easterly along the Southern edge of the Stillhouse Hollow Reservoir Spillway and United States Army Corps of Engineers property line, to the South riverbank of the Lampasas River.

Thence, Easterly along the South riverbank of the Lampasas River, to the intersection of with the City of Belton City Limit Boundary.

Thence, following the contours of the City of Belton City Limit boundaries, to the intersection of the centerline of Elm Grove Road for the Northeast corner of the Boundary Description,

Thence, Southerly along the centerline of Elm Grove Road to the intersection with the centerline of the Lampasas River.

Thence, Easterly along the contours of the South riverbank of the Lampasas River, to the intersection of the centerline of Farm-to-Market 1123.

Thence, Easterly along the centerline of Farm-to-Market 1123, to intersection of the centerline of Armstrong Road.

Thence, Southerly along the centerline of Armstrong Road, to the intersection of the centerline of Farm-to-Market 2268.

Thence, Southerly from centerline of Farm-to-Market 2268 along the centerline of Armstrong Loop Road to the Northeastern part of property corner owned by BSN UNLIMITED SERIES LLC FM 2268 Series, Property ID 38097, as described in the official record of Bell County, Deed Number 201100003259.

Thence, Southerly following the East Property Line contours of the property owned by BSF UNLIMITED SERIES LLC FM 2268 Series, Property ID 38097, as described in the official record of Bell County, Deed Number 201100003259, to the intersection with the Northeast corner of the property owned by NAIVAR, JOHNNIE L ETAL, Property 78058, as described in the official record of Bell County, Deed Volume 00627, Deed Page 00486.

Thence, Southerly following the East Property Line contours of the property owned by NAIVAR, JOHNNIE L ETAL, Property 78058, as described in the official record of Bell County, Deed Volume 00627, Deed Page 00486, to the intersection with the Northeast corner of the property owned by SCHWERTNER FARMS INC., Property ID 14243, as described in the official record of Bell County, Deed Volume 3733, Deed Page 462.

Thence, Southerly following the East Property Line contours of the property owned by SCHWERTNER FARMS INC., Property ID 14243, as described in the official record of Bell County, Deed Volume 3733, Deed Page 462, to the intersection with the Northeast corner of the property owned by SCHWERTNER FARMS INC., Property 14241, as described in the official record of Bell County, Deed Volume 3733, Deed Page 462.

Thence, Southerly following the East Property Line contours of the property owned by SCHWERTNER FARMS INC., Property 14241, as described in the official record of Bell County, Deed Volume 3733, Deed Page 462, to the intersection with the Northeast corner of the property owned by SCHWERTNER FARMS INC., Property 14240, as described in the official record of Bell County, Deed Volume 3733, Deed Page 462.

Thence, Southerly following the East Property Line contours of the property owned by SCHWERTNER FARMS INC., Property 14240, as described in the official record of Bell County, Deed Volume 3733, Deed Page 462, to the intersection with Hackberry Road.

Thence, Westerly following the centerline of Hackberry Road, to the Northeast corner of the property owned by SCHWERTNER FARMS INC., Property 104086, as described in the official record of Bell County, Deed Volume 02981, Deed Page 00019.

Thence, Southerly following the East Property Line contours of the property owned by SCHWERTNER FARMS INC., Property 104086, as described in the official record of Bell County, Deed Volume 02981, Deed Page 00019, to the intersection with the Northeast corner of the property owned by SCHWERTNER FARMS INC., Property 104051, as described in the official record of Bell County, Deed Volume 02891, Deed Page 00019.

Thence, Southerly following the East Property Line contours of the property owned by SCHWERTNER FARMS INC., Property 104051, as described in the official record of Bell County, Deed Volume 02981, Deed Page 00019, to the intersection with the Northeast corner of the property owned by BANE, COLBY FRANK ETUX LOGAN MICHELLE, Property 35980, as described in the official record of Bell County, Deed Number 2020016601.

Thence, Southerly following the East Property Line contours of the property owned by BANE, COLBY FRANK ETUX LOGAN MICHELLE, Property 35980, as described in the official record of Bell County, Deed Number 2020016601, to the intersection of the centerline of Lindemann Road.

Thence, Westerly following the centerline of Lindemann Road, to the intersection of the centerline of the Gooseneck Road/Lindemann Road transition.

Thence, Westerly following the centerline of the Gooseneck Road/Lindemann Road transition, continuing West on Lindemann Road.

Thence, Westerly following the centerline of Lindemann Road, to the intersection of Farm-to-Market 2115.

Thence, Southerly following the centerline of Farm-to-Market 2115, to the intersection of Farm-to-Market 487.

Thence, in a southeasterly direction, following the centerline of Farm-to-Market 487 to the Bell/Williamson County Line.

Thence, Westerly following the Southern County Line of Bell County, to the intersection of the with the centerline of Farm-to-Market Road 2843.

The intersection points of the Southern County Line of Bell County and Farm-to-Market Road 2843 is noted as the beginning and ending point for the Boundary Description.



# Salado Village Guide

Section C • Marketplace, Dining, Overnight, Events • saladovillagevoice.com • July 2, 2020



Salado Grown and Salado Made  
Your Hometown Winery

841 N. Main St (254) 947-8011



**HAND BLOWN GLASS MADE IN SALADO, TEXAS**  
interactive experience | live demonstrations | custom art & commissions  
#2 Peddler's Alley, Salado, TX 76571 | 254.947.0339 | [SALADOGGLASSWORKS.COM](http://saladoglassworks.com)

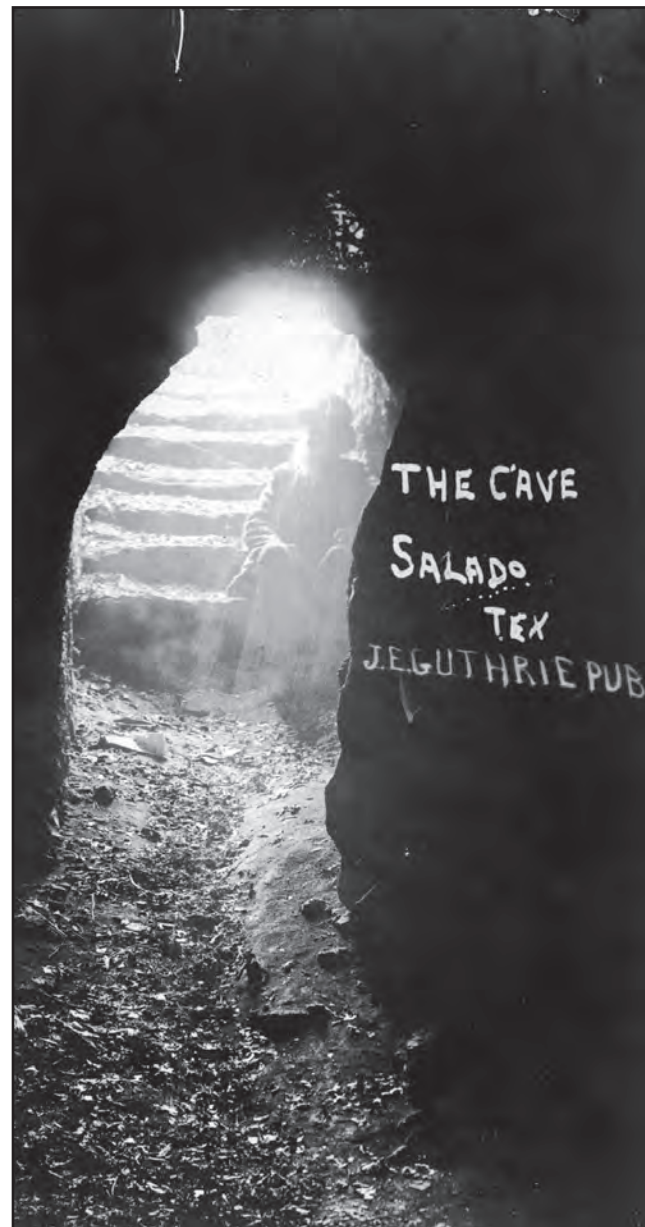
## Search for Gold in Stagecoach Cave

**EDITOR'S NOTE:** WITH RENEWED INTEREST IN THE SPRINGS OF SALADO CREEK AND IN THE RENOVATIONS OF THE STAGECOACH INN, WE THOUGHT OUR NEWER READERS MIGHT LIKE THIS ARTICLE WHICH RAN IN THE SALADO VILLAGE VOICE IN 2003.

SALADO VILLAGE VOICE IS IN THE PROCESS OF DIGITIZING OUR ENTIRE 42 YEARS OF NEWSPAPERS. SO FAR, WE HAVE DIGITIZED THE YEARS 1990-2020 AND ARE WORKING ON THE EARLIER YEARS.

By CHRIS MCGREGOR  
FORMER STAFF WRITER

Rumors tend to hang around like old hound dogs in a place like Texas. Not long after invention, they can be seen to sprout limbs; growing arms, legs and a personality, and then assume to take on a life of their own. They age, too, from infancy to gray hair and walking sticks, through generations of whispers and



An eerie photo of the steps leading into the Stagecoach Cave. (COURTESY PHOTO)

in the spring located in the cave, then rush hurriedly to where Sirena now stands and watch as the apple popped up out of nowhere. Because the Creek was spring-fed and very fresh, it was safe to eat the fruit afterwards. "It would be one cold apple though," Ory says.

Subsequently, through years of use and little maintenance, the cave was eventually reclaimed by nature. There came to be much overgrowth and litter in the cave, and the proprietor at that time (then known as the Shady Villa), lamented that it was no longer safe, and he couldn't allow visitors to enter it any longer.

This was a big blow to the townfolk. But it was also the Great Depression, and people had very little money, especially for clearing out a cave. It was then that Elaine's grandfather, an enterprising man, struck upon a notion to rid the cave of its debris, without costing the town a dime.

"He knew that people were interested in treasure hunting," Ory explained. "So he went to Austin to speak with a lady he knew."

Elaine's grandfather asked the lady to write an inquiring letter to another man, whom Ory terms as a "man of means," concerning rumors of a cave containing gold in the Salado area. In the hopes the man would take an interest in the story, the letter was sent and the town waited for him to show up.

They wouldn't have to wait long. Some days later the gentleman arrived at the steps of the Shady Villa, not disclosing his purpose or the letter he had been sent.

"He, my grandfather, and the proprietor then went to sit together on the veranda at the Shady Villa to talk for awhile," Ory said.

What exactly the men discussed isn't known, but before nightfall an agreement was reached that the "man of means" would have permission to clear out the cave.

"Another good thing to happen is that the gentleman hired local boys to haul out the dirt in buckets," said Ory. "Times were tough then, so any work the boys could find during summer was welcome."

The excavation got underway the next day, with buckets upon buckets of debris being removed from the cave. The work was difficult and time-consuming, but the man remained optimistic.

"I suppose he really thought something was down there," Ory mused.

But no man's patience is infinite, and after a few more days of fruitless labor, the project was abandoned. Elaine suspects the boys who worked underground were a trifle spooked by the rumbling cars passing overhead on old Highway 81. She says she's not sure if anything was unearthed, other than trash or litter, but the cave was clean, and that was treasure enough for the kids in town.

And that's no rumor.

prognostications, and they never seem to totally die out in that clever, inviolable slipperiness that immortal things have.

They come mostly from by-gone eras, from less-hurried folks with less-hurried lives. The best of them predate the automobile, telephone and light bulb: it seems you don't need electricity to run a rumor.

Gold, and rumors of it, have long been the Muse for those seeking riches. Back a few centuries ago, when the natives of what is now West Texas were confronted with Cabeza de Vaca and his conquistadors, they concocted the tale of the Seven Cities of Cibola, a fabled kingdom where even the streets themselves were said to be gilded in pure gold. Of course, no such paradise existed, the natives just wanted to be rid of their Spanish guests.

Call it a rumor of necessity. This fabrication, however, was not to be the last of its kind in Texas, as it resurfaced about 75 years ago in the Village of Salado.

In part due to man's zeal

for gold and his willingness to scour the world and all its four corners to find it, Salado has her own Cibola story.

Long associated with tales of hidden treasure and undiscovered mines, Salado, and especially the Creek, have seen myriads of tall-tales, and scores of men, prickly as cactus, combing its banks in search of a rumor. There's the one about Spanish gold at the headwaters of the Creek just south of town. There are rumors of buried treasure just east of town, and there's also talk about gold in the large cave near the Stagecoach Inn.

Closed now, in the 1930's the cave was something of a playground, according to Elaine Ory, who was born in Salado in 1927 and has spent much of her life here.

It had a large tree inside, with a trunk fit for climbing and limbs constructed purely for swinging. Entire families would spend afternoons there, and had been for some time. In those days, Elaine says, it was possible to drop an apple

ALEXANDER'S  
CRAFT COCKTAILS & KITCHEN

SIGNATURE COCKTAILS • BEER & WINE • GREAT FOOD

Limited seating guidelines & Expanded outdoor seating

Dine in, take-out or delivery

\$14.95 Tuesday Prix Fixe

(entree, dessert, & wine)

Add-ons available - Order online now  
[www.inncreek.com/alexanders](http://www.inncreek.com/alexanders) | 254-947-3828



The Shoppes on Main  
in Salado

The Marketplace Cafe

Gelato, Coffee, Sweets & Eats

254-947-0888 22 North Main



Lunch  
Dinner  
Late Night

Daily Specials

AND CHUPACABRA KITCHEN  
**401 S MAIN**  
CORNER OF ROYAL AND MAIN



**TO-GO & DELIVERY**  
**60 TX CRAFT BEERS ON TAP**  
**400+ WINES**  
FOOD 254-208-2220 | BAR 254-308-2019



Have you tried our WINGS?

**The Pizza Place**

230 North Main Street

947-0022

Tues - Sun 11 - 9

Pickup • Dine-in • Delivery

[PizzaPlaceSalado.com](http://PizzaPlaceSalado.com)

Vintage Vinyl RECORDS

**SOFT'S** NEW Flax & Sandals

at the Stagecoach

**OPEN**

STAY SAFE • WEAR A MASK  
GLOVES RECOMMENDED

**401 S. Main (254) 947-4336**



# Village of Salado Calendar of Events

## SALADO ROTARY CLUB

Now Meeting twice a month via ZOOM. Regular meetings will resume in the future.

## SALADO LIONS CLUB

Meetings are on hold for now, hoping to resume regular schedule soon!

## MONDAYS

Bikes & Brews Barrow Brewing Co., 7 p.m.

## TUESDAYS

Salado Community Chorus practice. **CANCELED until September 2020.**

## THURSDAYS

Run4Beer at Barrow Brewing Co., 7p.m.  
Bikes & Brews Barrow Brewing Co., 7 p.m.

## FRIDAYS

Crocheting with Karen, 10:30 a.m. at Stamp Salado **ON HOLD**  
Live Music at Chupacabra Craft Beers, 7 p.m.

## ON HOLD

Live Music at Barrow

Brewing Co. 7:30 p.m. **ON HOLD**

## SATURDAYS

Bikes & Brews, Barrow Brewing Co., 7:30 a.m. **ON HOLD**  
Farmers Market at Barrow Brewing Co., 9 a.m.-1 p.m.

Live Music at Chupacabra Craft Beers, 7 p.m.

## ON HOLD

Live Music at Barrow Brewing Co., 7:30 p.m. **ON HOLD**

## SUNDAYS

Live Music at Barrow Brewing Co. 4 p.m.

## JUNE 29-JULY 10

Early voting in political party primary run-offs will be conducted in person each week day at the following locations: Belton - Bell County Courthouse Annex, Killeen - Bell County Annex, Killeen Community Center, Temple - Bell County Annex, Salado Church of Christ, 217 North Stagecoach Harker Heights - Parks & Recreation Center.  
June 29-July 2: 8 a.m.-5 p.m. July 5: 12 noon-5 p.m. July 6-10: 7 a.m.-7 p.m.

## JULY 2

Village of Salado Board of Aldermen meeting, 6:30 p.m. via Zoom. Details at saladotx.gov.

## JULY 4

Salado Historical Society Fourth of July Picnic, Salado High School cafeteria. **CANCELED**

## JULY 4

South of Jupiter at Barrow Brewing Co, 7:30 p.m.

## CANCELED

## JULY 5

Pistons & Pints, Barrow Brewing Co. 11:30 a.m. for car enthusiasts. **CANCELED**

## JULY 4

Farmers Market at Barrow Brewing Co., 9 a.m.-1 p.m. **CANCELED**

## JULY 5

Astro Asana and Ales at Barrow Brewing Co, 7 p.m.

## CANCELED

## JULY 6

Pint Night: Rentsch Brewery, 5 p.m. - midnight at Chupacabra Craft Beer. Growlers to go with 2 free pint glasses.

## JULY 9

Tokyo, Japan Around the World dining experience at Alexander's Craft Cocktails and Kitchen

## JULY 11

Rebecca Jane at Barrow Brewing Co, 7:30 p.m. **CANCELED**

## JULY 12

Brandon Panier at Barrow Brewing Co, 7:30 p.m. **CANCELED**

## JULY 13

Pint Night: Friends & Allies Brewing, 5 p.m. - midnight at Chupacabra Craft Beer. Growlers to go with 2 free pint glasses.

## JULY 14

Election day for Political Primary run-offs will be 7 a.m.-7 p.m. at any of the 40 polling places in Bell County, including the Salado Church of Christ Activity Center. Polling places can be found online at [https://www.bellcountytexas.com/departments/elections/polling\\_locations.php](https://www.bellcountytexas.com/departments/elections/polling_locations.php)

## JULY 17

Outdoor Movie Night at Barrow Brewing Co, 7:30 p.m.

## JULY 18

Dustin Brown at Barrow Brewing Co, 7:30 p.m.

## JULY 19

Anna Larson at Barrow Brewing Co, 7:30 p.m.

## JULY 18, 25 & AUG 1

Salado Legends THE MOVIE at Tablerock Amphitheater. Free admission.

## CANCELED

## JULY 20

Pint Night: Double Horn Brewing Co, 5 p.m. - midnight at Chupacabra Craft Beer **ON HOLD**

## JULY 23

Yucatan Around the World dining experience at Alexander's Craft Cocktails and Kitchen

## JULY 24

Friday Sip 'n Shop, 5 - 8 p.m. across the Village of Salado

## JULY 24

Fourth Friday Night Gospel Singing at First Cedar Valley Baptist Church, 12237 FM 2843, 7 p.m. Potluck at 10 p.m.

## JULY 24

Fourth Friday Night Gospel Singing at First Cedar Valley Baptist Church, 12237 FM 2843, 7 p.m. Potluck at 10 p.m.

## JULY 24

Martian Folk at Barrow Brewing Co. 7:30 p.m.

## JULY 26

Jacob Rangel at Barrow Brewing Co, 4 p.m.

## JULY 27

Pint Night: Bare Arms Brewing, 5 p.m. - midnight at Chupacabra Craft Beer

## JULY 31, AUG 1-2

Cowboy Poetry and Music Gathering.

## JULY 31

Fred Fuller at 6:30 p.m., followed by Kasey Thornton band, 8 p.m. at Barrow Brewing Co.

## AUGUST 15

Open House for Salado Middle School with Cornerstone Dedication Ceremony by the Grand Lodge of Texas AF&AM and Salado Masonic Lodge #296, 10 a.m.

## AUGUST 28

Friday Sip 'n Shop, 5 - 8 p.m. across the Village of Salado

## SEPTEMBER 8

Salado Community Chorus pot luck and fall season registration, 6 p.m., Salado Civic Center.

## SEPTEMBER 19 - 20

Auditions for Fright Trail and A Christmas Carol, 3 p.m. at Tablerock Amphitheater. Attend one session

## OCTOBER 3

Randy Rogers Band at Johnny's Outback. Gates open at 6 p.m.

## OCTOBER 9-10

Christmas in October, sponsored by Salado Ladies Auxiliary. **CANCELED**

## OCTOBER 17

Barrow Volks Ride is a ride for all cyclists with distances of 16 miles, 50KM and 100KM and will kick off the three Saturdays of Oktoberfest at Barrow Brewing Co. on Oct. 17. Proceeds from the registration of riders benefit the Salado Volunteer Fire Department. Online registration of \$50 per rider is available at [bikereg.com](http://bikereg.com).

## OCTOBER 17

Oktoberfest at Barrow Brewing Co. will feature fun contests, like beer stein holding and hammerschlagen as well as a vendors' market in the field by the creek. Live music and guest food trucks, including Checkpoint Germany.

On October 24, there will be a demonstration of Schafkopf, a traditional Bavarian card game that is played in pubs, Biergartens and kitchen tables throughout Germany. A variation for five players called Sheephead is played in German communities in the Midwest.

## OCTOBER 17

Grape Stomp 3-8 p.m. at Salado Winery Co., 841 N. Main St. raising funds for Salado Montessori. Pizza by Pizza PieRos.

## OCTOBER 17, 24 & 31

Fright Trail, 6:30 - 9:30 p.m. at Tablerock.

## OCTOBER 24

Oktoberfest at Barrow Brewing Co. will feature fun contests, like beer stein holding and hammerschlagen as well as a vendors' market in the field by the creek. Live music and guest food trucks, including Checkpoint Germany. This weekend, there will be a demonstration of Schafkopf, a traditional Bavarian card game that is played in pubs, Biergartens and kitchen tables throughout Germany. A variation for five players called Sheephead is played in German communities in the Midwest.

## OCTOBER 31

BARKTOBERFEST at Barrow Brewing Co. will feature be especially for the furry friends and will feature fun contests, like beer stein holding and hammerschlagen as well as a vendors' market in the field by the creek. Live music and guest food trucks, including Checkpoint Germany.

## NOVEMBER 7-8

Salado Museum and College Park will host its first annual Hickory Golf Tournament at the Mill Creek Golf Course, designed by golf architect Robert Trent Jones II. Entry is \$150 per player.

## NOVEMBER 13-15

Highland Games and Gathering of Scottish Clans at Johnny's Outback.

## DECEMBER 3

Annual Salado Christmas Stroll Parade, 6 p.m. Lighted and under the lights!

## DECEMBER 4-6

Annual Christmas Stroll.

## DECEMBER 4, 5, 11 & 12

A Christmas Carol, 7 p.m. at Tablerock Amphitheater. Concessions open at 6:15 p.m.

## DECEMBER 11-13

Annual Christmas Stroll.

## DECEMBER 12

Asanas and Ales, 10 a.m. at Barrow Brewing

642 N. MAIN ST. (254) 947-8848



RUBBER STAMPS  
SCRAPBOOKING  
RIBBONS  
GREAT CLASSES

STAMPSSALADOTEXAS.COM



**Cowboys Bar-B-Q**  
Exit 285 • 1300 Robertson RD  
Slow Cooking  
Fast Service  
Catering, Take Out or Dine In  
254-947-5700  
Miguel Perez, owner

**Now Open**

Thurs 4-9pm  
Fri-Sat 11am-9pm  
Sun 11am-3pm

Salado's very own Tex-Mex in the historic district.




Menu at [riosaladotexmex.com](http://riosaladotexmex.com)  
(254)308-2044 | 109 Royal St

Cheers to the weekend Y'all




108 Royal Street 254-947-3544



1 Royal Street (254) 947-8840  
Life is Sweet OPEN 10-6 DAILY  
[sugarshacksalado.com](http://sugarshacksalado.com)




108 Royal Street  
call in order  
(254) 226-1684  
see the menu  
[www.happypizzaco.com](http://www.happypizzaco.com)

Thur 4 - 9:30 pm | Fri 4 - 10 pm | Sat noon - 10 pm | Sun noon - 8 pm  
Happy Pizza Family Favorites Fresh Salads

We have your essentials



VILLAGE SPIRITS  
Liquor Store  
1109 W. Village RD (behind Sonic)  
(254) 947-7117  
Monday thru Saturday 10 a.m. to 9 p.m.

**Salado Creek Healing**

THERAPEUTIC MASSAGE  
SOUND THERAPY  
REIKI & OTHER  
HOLISTIC MODALITIES



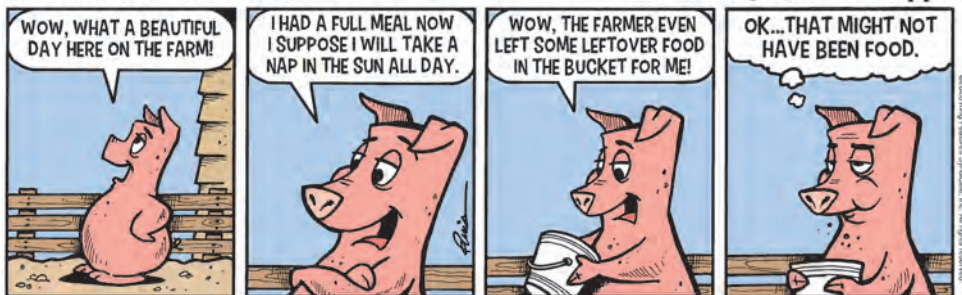
McKenzie Reeve, LMT 254.308.0242  
#8B Rock Creek Dr. By Appointment

Visit [squareup.com/store/saladocreekhealing](http://squareup.com/store/saladocreekhealing)  
for info on Yoga, Group Classes & New Modalities



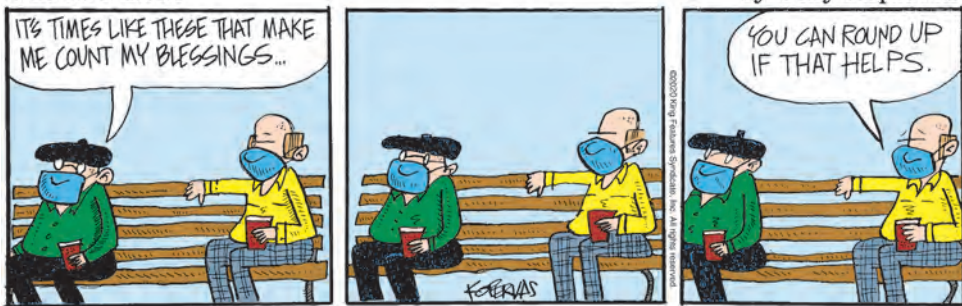
### Amber Waves

by Dave T. Phipps



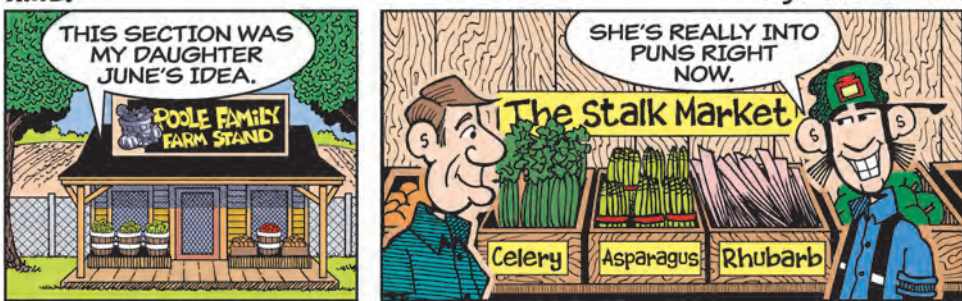
### Out on a Limb

by Gary Kopervas



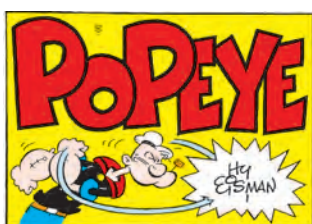
### R.F.D.

by Mike Marland



### The Spats

by Jeff Pickering



## Contract Bridge

### A MATTER OF CONCEALMENT

East dealer.

Both sides vulnerable.

**NORTH**

- ♠ K 10 9
- ♥ J 5 2
- ♦ A Q 6 3 2
- ♣ 7 6

**WEST**

- ♠ J 6 3
- ♥ K
- ♦ 9 7 5 4
- ♣ A 10 9 5 4

**EAST**

- ♠ A Q 8 7 5 2
- ♥ 7 4
- ♦ 8
- ♣ Q J 8 3

**SOUTH**

- ♠ 4
- ♥ A Q 10 9 8 6 3
- ♦ K J 10
- ♣ K 2

The bidding:

East 2♠ South 3♥ West 3♠ North 4♥

Opening lead — three of spades.

In this deal from a team contest, the final contract at both tables was four hearts, although East-West can make four spades as the cards lie. Both Wests led a spade after having raised East's weak two-spade opening to three.

At the first table, East won dummy's nine of spades with the queen and shifted to the queen of clubs. Declarer covered with the king, losing to the ace, and West returned a club to East's jack. East then exited with a trump.

It did not take South long to find the

winning play. He promptly put up the ace of hearts, caught West's singleton king, drew the missing trump and claimed the remainder, making four.

South had good reason to go against the percentages by playing the hearts as he did. East's weak two-bid promised a strong six-card suit but not enough high-card strength to open with a one-bid.

After the first three tricks, East could be credited with the A-Q of spades and Q-J of clubs. If he also held the king of hearts, he would have opened with one spade. Therefore, declarer's only chance was that West held the singleton king.

At the second table, the play to the first trick was the same, but there the similarity ended. Here, East was not inclined to reveal the entire high-card content of his hand by shifting to the queen of clubs at trick two. Instead he returned the club three!

Declarer put up the king, losing to the ace. West did his part to add to the obfuscation by returning the ten of clubs, which held the trick. West then exited with a diamond.

This time, South had much less to go on. He won the diamond in dummy, led the jack of hearts and let it ride. West's king scored the setting trick, and when East ruffed the diamond return for down two, it merely added to the satisfaction of a well-defended hand.

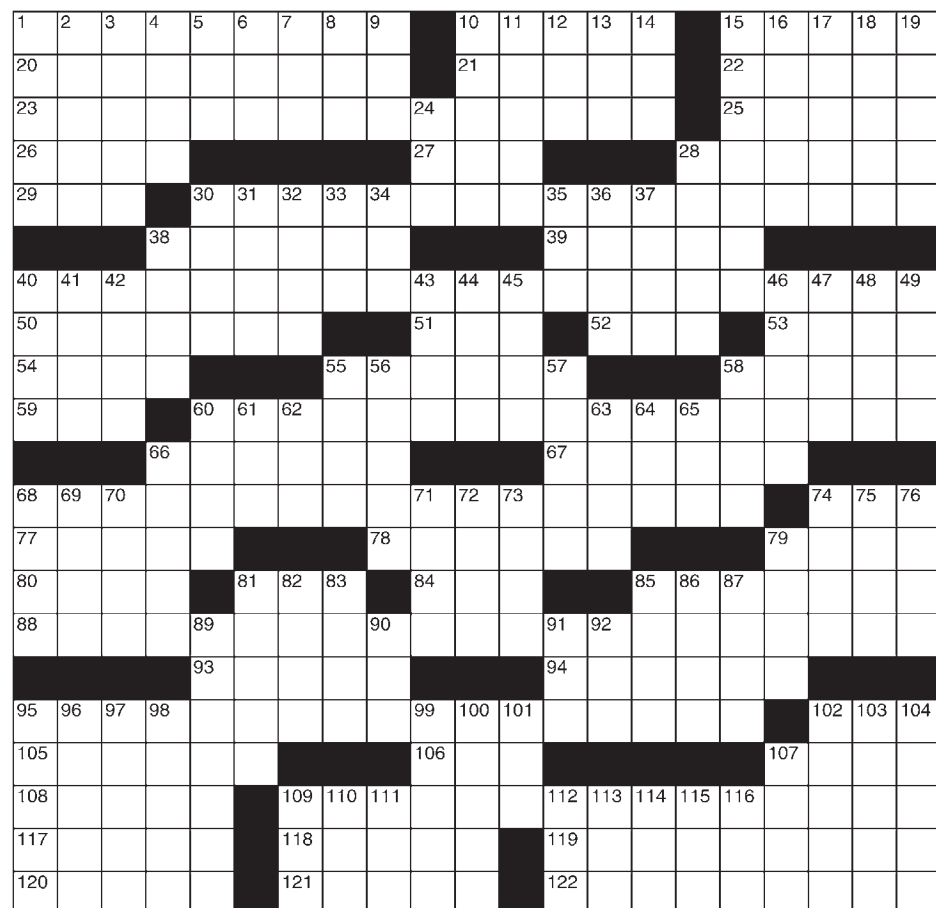
©2020 King Features Syndicate Inc.

by Steve Becker

## Super Crossword

THE OSLO CHORDS

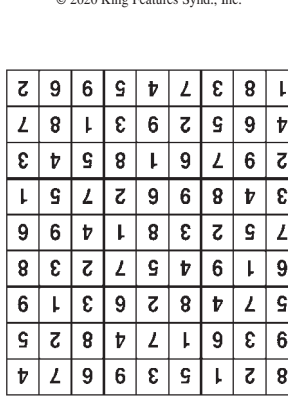
- ACROSS**
- 1 Bus or train schedule
  - 10 Marvelled vocally
  - 15 Cowboy rope
  - 20 Like political cartoons
  - 21 Lilted song syllables
  - 22 Sigmoid curves
  - 23 Start of a riddle
  - 25 Michigan city
  - 26 Scotland's — Ness
  - 27 Address on the net
  - 28 Opening part of an email
  - 29 Munched on
  - 30 Riddle, part 2
  - 38 Melodious passage
  - 39 Wipe out
  - 40 Riddle, part 3
  - 50 Guevara called "Che"
  - 51 Tillage tool
  - 52 Cut short
  - 53 In — (lined up)
  - 54 French lady friend
  - 55 Treating unkindly
  - 58 Big like Santa
  - 59 Sitting spot on Santa
  - 60 Riddle, part 4
  - 66 How-to book
  - 67 Unspecified travel destination
  - 68 Riddle, part 5
  - 74 Install, as tile
  - 77 "— Doone" (1869 novel)
  - 78 Defiant types
  - 79 Pill bottle info
  - 80 Campus VIP
  - 81 Feel unwell
  - 84 Egypt, before 1971: Abbr.
  - 85 Clings
  - 88 Riddle, part 6
  - 93 10th-century Holy Roman emperor
  - 94 Gremlins' kin
  - 95 End of the riddle
  - 102 Letter before sigma
  - 105 One ruining something
  - 106 Porto Rico, par exemple
  - 107 Buy stuff
  - 108 Figure skater Slutskaya
  - 109 Riddle's answer
  - 117 Material for jeans
  - 118 Pig
  - 119 Talked into
  - 120 "Alive" actor Vincent
  - 121 Certain eel
  - 122 Big names in daytime dramas
  - 18 Core belief
  - 19 Houston basebatter
  - 24 Letters before xis
  - 28 Sprayed, with "down"
  - 30 Spring flower
  - 31 Coin maker
  - 32 Jumping slick
  - 33 Sch. in Columbus
  - 34 "... or — thought!"
  - 35 Ang of film
  - 36 Art Deco illustrator
  - 37 Young deer
  - 38 To — (perfectly)
  - 40 Good buy
  - 41 "— la Douce"
  - 42 Cut short
  - 43 Rug type
  - 44 Daughter in comedy "Hagar the Horrible"
  - 45 Software testing phase
  - 46 Mogul
  - 47 Mined metals
  - 48 Part of ENT
  - 49 Jug type
  - 55 Sound of an air kiss
  - 56 Caught fish with pots
  - 57 Comparable (with)
  - 58 — -Free (contact lens solution)
  - 60 Mama's ma
  - 61 Yoko of art and music
  - 62 Beaten track
  - 63 Foldout beds
  - 64 Suffix with meteor
  - 65 L-P link
  - 66 Miracle food
  - 68 Alan of "The Aviator"
  - 69 Caroling
  - 70 Be a lure to
  - 71 Castro of Cuba
  - 72 Bundle up
  - 73 In this spot
  - 74 Petty of films
  - 75 On the ocean
  - 76 Rural assent to a lady
  - 79 Meanings in dict.
  - 81 Moving around
  - 82 "Suffice — say ..."
  - 83 Boxer
  - 85 Oodles
  - 86 Salami shop
  - 87 Sword part
  - 89 Spanish for "I love you"
  - 90 Untruth
  - 91 Siouan tribe
  - 92 Aetna rival, for short
  - 95 Lumps of chewing tobacco
  - 96 Certain intl. delegate
  - 97 Minneapolis neighbor
  - 98 — -law (non-blood relative)
  - 99 Ross or Rigg
  - 100 Bowling lane
  - 101 — canto
  - 102 1970s sitcom
  - 103 "Iliad" writer
  - 104 Newspaper think pieces
  - 107 ESPN no.
  - 109 Suffix with hero
  - 110 Four halves to a lady
  - 111 Title for Elton John
  - 112 Auto navig. aid
  - 113 Rock's — Speedwagon
  - 114 Lyricist
  - 115 Supposed psychic gift
  - 116 Gloomy —



## Trivia test

- by Fifi Rodriguez
- GEOGRAPHY:** What was the former name of the Hawaiian Islands?
  - MOVIES** Which Elvis Presley movie features the theme song "Can't Help Falling in Love"?
  - GENERAL KNOWLEDGE:** What color is fuchsia?
  - TELEVISION:** What was the real name of the Skipper's character on "Gilligan's Island"?
  - GEOLOGY:** What kind of rock is sandstone?
  - FOOD & DRINK:** Which country has a wine-producing region called the Rapel Valley?
  - MEDICAL:** What kind of insect can transmit diseases such as cholera and typhoid fever?
  - MEASUREMENTS:** How many standard bottles are contained in a magnum of champagne?
  - LITERARY:** Who was the first official poet laureate of England?
  - HISTORY:** Which treaty ended the American Revolution?

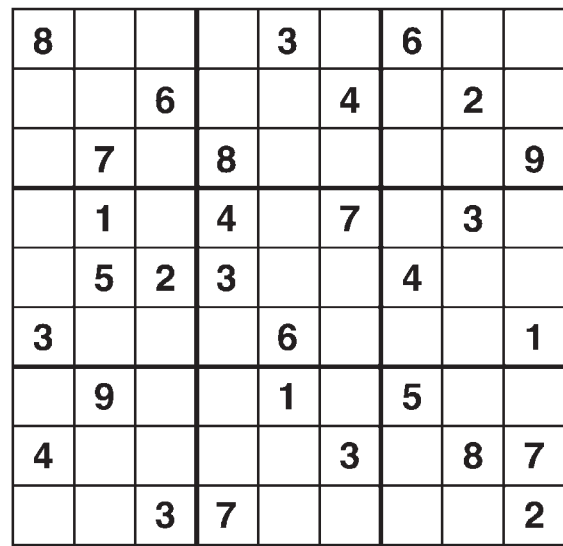
- Answers**
- The Sandwich Islands
  - "Blue Hawaii"
  - Purplish red
  - Jonas Grumby
  - Sedimentary
  - Chile
  - Houseflies
  - Two
  - John Dryden
  - The Treaty of Paris



©2020 King Features Syndicate, Inc.

## Weekly SUDOKU

by Linda Thistle



Place a number in the empty boxes in such a way that each row across, each column down and each small 9-box square contains all of the numbers from one to nine.

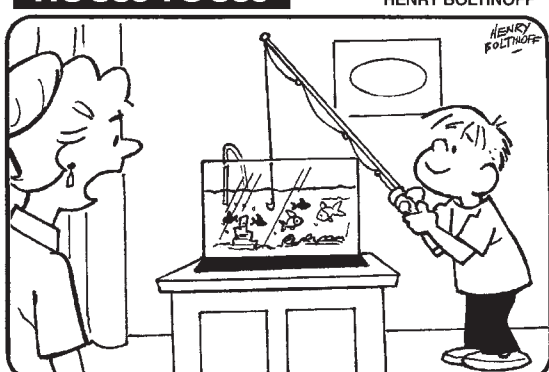
**DIFFICULTY THIS WEEK: ♦♦**

♦ Moderate ♦♦ Challenging  
♦♦♦ HOO BOY!

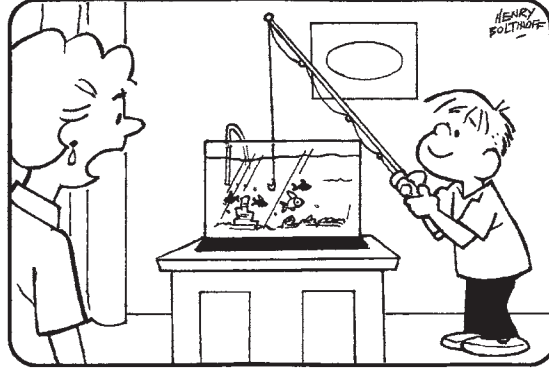
©2020 King Features Synd., Inc.

### HOCUS-FOCUS

BY HENRY BOLTIHOFF



Find at least six differences in details between panels.



Differences: 1. Table is different 2. Picture has moved. 3. Fish is missing. 4. Water level is higher. 5. Woman's hair has changed. 6. Boy's neckline is different.

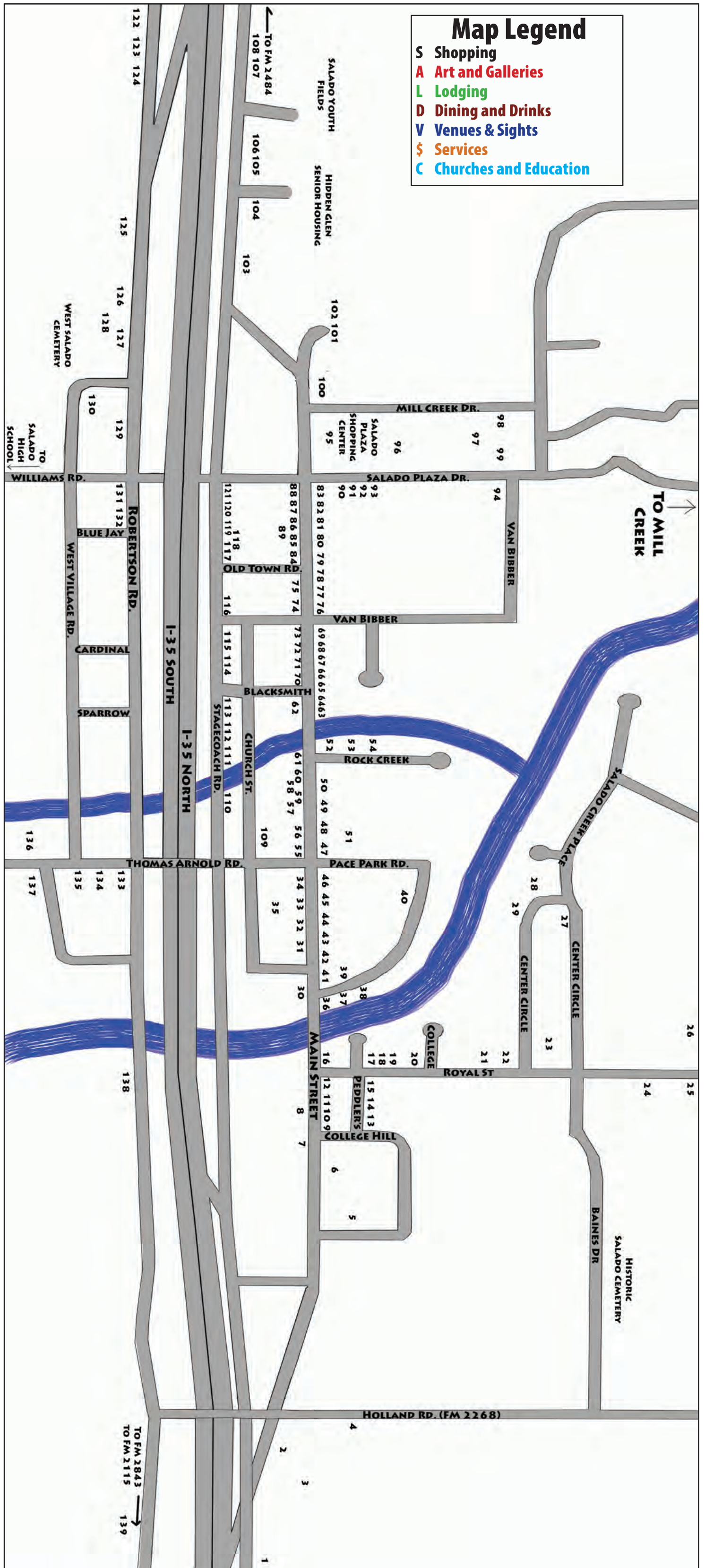
## Super Crossword

If you enjoy the Puzzle page, try our interactive crossword and sudoku puzzles online at: [saladovillagevoice.com](http://saladovillagevoice.com)



# Shopping Map of Salado

#	Business Name	Type
4	St. Stephen Catholic Church 254-947-8037	C
6	Salado College Park 254-947-5232	V
7	Raney & Associates 254-913-1215	\$
9	Salado Museum 254-947-5232	V
	Salado Visitors Center 254-947-8634	\$
	Salado Chamber of Commerce 254-947-5040	\$
	Village of Salado Tourism Office 254-947-8634	\$
10	Sofi's 254-947-4336	S
11	Chupacabra Craft Beer and Winery (512) 576-0123	D
	Chupacabra Kitchen (254) 308-2019	D
14	Salado Glassworks 254-947-0339	A
15	Rio Salado Cocina y Cantina 254-308-2044	D
16	The Sugar Shack 254-947-8840	S/D
17	Barrow Brewing Co. 254-947-3544	D
	Happy Pizza 254-226-1684	
21	The Venue 254-947-5554	V
22	The Shed 254-947-1960	D
24	Tablerock 254-947-9205	V
26	Salado United Methodist Church 254-947-5482	C
29	Alexander's Distillery 254-947-5554	D
29	Inn on the Creek 254-947-5554	L
	Alexanders Craft Cocktails & Kitchen 254-947-3828	D
30	First Baptist Church 254-947-546	C
31	Fairway Mortgage 254-947-3454	\$
32	First Texas Brokerage 254-947-5577	\$
34	First Community Title 254-947-8480	\$
	Farmer's Insurance Zbranek Agency 254-947-0995	\$
40	W.A. Pace Memorial Park 254-947-5060	V
53	Salado Creek Healing 254-308-0242	\$
55	Salado Family Dentistry 254-947-5242	\$
58	The Shoppes on Main The Marketplace Cafe 254-947-0888	S
60	Salado Creek Jewelry 254-855-5538	S
62	The Pizza Place 254-947-0222	D
75	Stage Stop Center Bruce Bolick, CPA 254-718-7299	\$
76	Salado Civic Center 254-947-5479	\$
81	Salado Wine Seller and Salado Winery Co. 254-947-8011	D
82	St. Joseph's Episcopal Church 254-947-3160	C
85	Salado Post Office 254-947-5322	\$
86	Bill Bartlett - Century 21 254-947-5050	\$
87	The Personal Wealth Coach 254-947-1111	\$
89	Stamp Salado 254-947-8848	S
90	Presbyterian Church of Salado 254-947-8106	C
91	Troy Smith Financial Services 254-947-0376	\$
92	Salado Sculpture Garden	A
96	Salado Plaza Ace Pest Control 254-947-4222	\$
	Anytime Fitness Salado 254-947-1063	\$
	Integrity Rehab 254-699-3933	\$
	Salado's Hair Shop 254-421-5173	\$
	Salado Village Voice 254-947-5321	\$
97	Brookshire Brothers 254-947-8922	S
100	Salado Public Library 254-947-9191	C
101	Salado Cleaners 254-947-7299	S
113	Salado Church of Christ 254-947-5241	C
126	Cowboy's Barbecue 254-947-5700	D
130	Village Spirits 254-947-7117	S
132	Broecker Funeral Home 254-947-0066	\$
135	Carus Dental 254-947-8067	\$
136	Salado Schools & Stadium Village Church of Salado 972-978-2239	C
139	Cedar Valley Baptist Church 254-947-0148	C
<b>Not Shown on the Shopping Map</b>		
	Don Ringer 254-774-6500	\$
	3C Cowboy Fellowship 254-947-7211	C
	Grace Church 254-947-5917	C
	Mill Creek Country Club 254-947-5698	V
	Brody's Mill Creek Clubhouse 254-654-7885	D
	JD's Truck Stop and Grill 254-947-5228	S/D



## Historical Markers in Salado

- |                                       |                                   |                               |                                 |
|---------------------------------------|-----------------------------------|-------------------------------|---------------------------------|
| 6. Salado Historic College Hill       | 25. The A.J. Rose Mansion         | 35. Salado Masonic Lodge #296 | 61. Historic Lenticular Bridge  |
| 8. Shady Villa Hotel (Stagecoach Inn) | 26. Old Methodist Chapel          | 45. The Anderson House        | 49. The Vickrey House           |
| 8. Main Street Bridge                 | 27. Caskey-Hendricks House        | 46. Old Saloon                | 76. Boles-Aiken & Denman Cabins |
| 16. Barber-Berry Mercantile           | 28. Dr. McKie Place (Twelve Oaks) | 48. The Norton-Orgain House   | 77. The Robert B. Halley House  |
| 23. The Baines House                  | 29. Alexander's Distillery        | 50. The Barton House          | 79. The Reed Cabin              |
| 24. Historic Dipping Vats             | 30. First Baptist Church          | 51. The Levi Tenney House     | 100. The Josiah Fowler House    |
|                                       | 31. The Tyler House               | 55. The Armstrong Adams House |                                 |



# Marketplace

Page 1D • Salado Village Voice Classifieds: Deadline is noon Mondays • 254.947.5321 • July 2, 2020



**ENTIRE REAL ESTATE**

**Shane LaCanne**  
(254) 654-4066

10+ Acres Available \$16,500 per acre  
From I-35 go W. on Amity. Property on Right



**ENTIRE REAL ESTATE**

**Shane LaCanne**  
(254) 654-4066

3b 2 ba 1878 sq ft updated town home  
Overlooking Salado Creek and Golf Course  
1910 Old Mill Rd Unit #1

**CHILD CARE**

**Parent's Day Out at Salado United Methodist church** currently has openings in the 3 year old, Pre-K 4's classes for the Fall of 2020. Our Christ centered curriculum and activities are chosen to lay, a foundation for understanding God, Jesus, church and family. Tues/

Thurs 8:30-2:30 Email: ttepera@saladouc.org tfnd

**Now Enrolling ages 0 - 12.** Kid's Zone Learning Center with two locations in Jarrell and one in Georgetown. See our ad for phone and address info. tfnd

CONTINUED, ON PG. 2D

## CENTURY 21

C21BB.COM

**Bill Bartlett**

860 N. MAIN - SALADO, TX

254.947.5050



**1402 Indian Pass, Salado**  
5 BR, 5 BA, 2 half baths on 6 ac.  
\$1,200,000



**15500 Spotted Horse Lane, Salado**  
4 BR, 3 BA on 26 ac.  
\$729,921



**1611 Royal St., Salado**  
4 BR, 3.5 BA on 5+ ac.  
\$649,999



**16262 Cedar Valley Rd.**  
5 BR, 3 BA on 10+ ac.



**2506 Hester Way, Salado**  
5 BR, 4 BA  
\$579,900



**14615 Armstrong Rd., Salado**  
3 BR, 2 BA on 24.88 ac.  
\$524,921



**2107 Highland Dr., Salado**  
3 BR, 3.5 BA  
\$489,500



**1308 Mission Tr., Salado**  
4 BR, 2.5 BA on 3.3 ac.  
\$485,021



**11002 La Paloma Loop W, Salado**  
4 BR, 4.5 BA  
\$464,900



**14453 Settlements Rd., Salado**  
3 BR, 2.5 BA on 5 ac  
\$424,821



**11047 Stinnett Mill, Salado**  
4 BR, 2.5 BA  
\$419,921



**1221 Yellow Rose, Salado**  
4 BR, 2.5 BA  
\$345,000

### Area Land Listings



- **55 ac.** with long road frontage & community water. Salado ISD.
- **5.12 ac.** in the Escarpment, Belton ISD, view of the lake from corner of property
- **10 ac.** Corner tract in Salado I.S.D.
- **20 ac.** Excellent development tract just S. of Salado on I-35. Seller will consider dividing into 10 ac. tracts. **SOLD**
- **26.45 ac.** Beautiful acreage homesite, between Belton & Salado
- **101.3 ac.,** prime for development, with trees & 2 stock ponds. Killeen ISD
- **220 ac.** working ranch with huge potential!



# Classifieds

**Britt Heating & Air Conditioning**  
Installations • Repairs

Office **947-5263**  
Mobile **760-1004**

Serving Salado for 25 years  
TACL #B006640

**RECOVERY ROOM UPHOLSTERY**

● CUSTOM UPHOLSTERY ●  
● FREE PICK UP & DELIVERY ●

515 E. VET. MEMORIAL BLVD. HARKER HEIGHTS  
**254-699-6105**

**(254) 247-7339**  
**Salado Landscaping**

**LANDSCAPING**  
Flowerbeds - Planting  
Weed Removal - Mulching  
Tree Trimming/Pruning  
Lighting - Irrigation & more

**MASONRY**  
Borders - Mailboxes  
Patios - Walkways  
Firepits - Fireplaces  
Patios - Kitchens & more

[www.saladolandscaping.com](http://www.saladolandscaping.com)

**CBS Construction**  
**254 718-1752**

Gravel Driveways | Parking Lots  
Septic Tanks | House Pads  
Lot Clearing | Demolition

Chet Sutton, owner-operator

**Al Clawson Disposal, Inc.**

(512) 930-5490 • [www.ClawsonDisposal.com](http://www.ClawsonDisposal.com)

**ASK US ABOUT OUR SERVICES**  
Waste Pickup • Recycling • Roll-Off Containers

**RANEY & ASSOCIATES**

**ANNA LOU RANEY, Broker/Realtor** 254-913-1215  
**DANIEL RANEY, Realtor** 254-760-2591  
**ANN CARROLL, Realtor** 254-760-0101  
**GEORGE ROMFH, Realtor** 254-718-6845  
**JENNIFER RAINE, Realtor** 254-421-2178  
**PATSY TYNES, Broker Assoc.** 254-228-6610

**1219 AMBROSE**  
4/3 with office and bonus room. Beautiful views from pack patio, on golf cart path, custom upgrades, move-in ready!  
**\$419,000**

**3227 HESTER WAY**  
2779 sq ft 4/4. Beautiful, high end finish out! In-ground pool and finished backyard shed.  
**\$449,000**

**616 INDIAN TRAIL**  
Superior quality and detail in this beautiful Tuscan home. This home is exceedingly well-appointed with an open floor plan. There are 5 bedrooms, 4.5 bathrooms, 2 living areas, formal & informal dining rooms, outfitted with Viking appliances, propane gas cook top, granite countertops, an island with room for barstools. Approximately 4,021 Sq. Ft.  
**\$699,900**

**1207 INDIAN TRAIL**  
Stunning retreat on .75 wooded acres with views! Verdant spaces, swimming pool, cabin, tool shed, covered BBQ area, outdoor living spaces and stone pathways. 2 bedroom/2 bath Master with garden tub, built-ins and sitting room. Private second bedroom with complete bath. Great room with terra cotta floors, fireplace, beamed ceilings and rare views.  
**\$399,000**

[RaneyRealEstate.net](http://RaneyRealEstate.net)

## CLEANING

**Clear View Window Cleaning:** Windows, gutters, powerwashing, ceiling fan cleaning. (254)931-6172.

## DRY CLEANERS

**Salado Cleaners:** Laundry, dry cleaning, alterations, leather, suede, 1209 N. Stagecoach, 254-947-7299. tfnd

## DIRT/STONE WORK

**CBS Construction:** septic tanks, house pads, driveways, lot clearing, top soil, 254-718-1752. tfnd

**Lone Star Grading,** commercial, residential, industrial excavation, grading, paving, pads, driveways, roads, 254-947-0149 or 254-933-7900

## FINANCIAL

**Bruce A. Bolick, CPA:** Payroll, Individual and Business Taxes. By appointment, (254) 718-7299. [SaladoCPA@aol.com](mailto:SaladoCPA@aol.com). tfnd

**The Personal Wealth Coach®:** SEC registered investment advisor, highly personalized portfolio design and management, 254-947-1111.

**Troy L Smith Financial:** Personal investment solutions. 254-947-0376, [Troysmith.com](http://Troysmith.com).

## FLORIST

**Brookshire Brothers** full service florist. Blooming plants. 254-947-8922.

## FREE

**FREE used** wine shipping boxes available at Salado Winery 12-6 daily. 841 N Main St.

## GARBAGE

**Clawson Disposal:** Competitive pricing for great garbage service; containers, too. 512-746-2000.

## HEALTH AND FITNESS

**Anytime Fitness:** 24 hour access in Salado Plaza. Locally owned and operated 254-947-1063

**Carus Dental:** General dentistry services. Dr. Ron Henderson, DDS, 254-947-8067

**Family Dentistry:** Lumineers for straighter, whiter teeth. Douglas B. Willingham, DDS, 254-947-5242.

**Integrity: Rehab & Home Health** Physical therapy, speech therapy, occupational therapy, in-home skilled nursing.

integrityrehab.net, 254-699-3933.

**Salado Creek Healing** - Therapeutic massage, sound therapy, reiki and other holistic modalities by appointment. McKenzie Reeve, LMT 254-308-0242

## HEAT & AIR

**Britt Heating & Air:** Installation and repairs, 254-760-1004, 254-947-5263, TACL #B006640

## INSURANCE

**Rita Zbrank,** Farmers Insurance, auto, home, life, commercial, 254-947-0995.

## JEWELERS

**Devereaux's Jewelers:** Quality crafted custom work, jewelry repair, appraisals, watch repair, stone setting, diamond sales, photo design. 254-771-1260.

**Lastovica Jewelers:** in-store jewelry repairs, diamond sales, setting and appraisal, custom design, watch repair, 254-773-5772.

**Salado Creek Jewelers by Kiki Creations:** 106 North Main St. 254-855-5538, private showings.

## LANDSCAPING

**LAWNWORK & TREE Salado Landscaping** - residential landscaping, masonry and concrete services. Locally owned and operated (254) 247-7339.

**Trees, Shrubs & Landscaping, Pruning,** [www.victormareklandscaping.com](http://www.victormareklandscaping.com). Residence 254-527-3822 or mobile 512-818-3822, Removal and Hauling. Flower beds, yard work, top soil. Serving Salado 38 years. 0724tfnd

## MOVING SERVICES

**Professional moving services.** Residential local or intrastate. Towne Services of Killeen. Contact for a quote. 254-699-3022 M-F 9:00-4:00. 5/14-8/28p

## PERSONAL SERVICES

**Salado's Hair Shop,** full service salon. Hair, Nails and Massage for the entire family. 213 Mill Creek Dr. Suite 160. (254)421-5173.

## PEST CONTROL

**Ace Pest Control:** Customer satisfaction guaranteed, free estimates, TPCL #12512; David Preston. 254-947-4222

## PLUMBING

**Moffat & Daughters Plumbing:** Tankless Water heater Service, repair, remodeling, Rinnai authorized service provider. 254-289-5986 (local) Master LIC # M017002

**Salado Plumbing.** In-home repairs, 254-947-5800. Master LIC M 16892

## REAL ESTATE SERVICES

**Fairway Independent Mortgage** offers a wide array of mortgage products, competitive interest rates. Call Lorraine Basham today 254-947-3454

**First Community Title,** branches in Salado, Temple, Killeen

and Gatesville. 40 N. Main Street, Salado 254-947-8480. tfnd

**Salado Homes available** Entire Real Estate, Shane LaCanne. (254)654-4066.

## RENTAL/LEASE

**COMMERCIAL, RETAIL Commercial space for lease on I-35, Salado.** Up to 5,000 sqft of climate controlled space and up to 1.5 acres of parking available. 254-947-5577, [www.efirsttexas.com](http://www.efirsttexas.com) 4/23fn

**Large, versatile,** climate controlled commercial space available for lease at 300 Royal St, Salado. 4,700 sqft. Salado sewer. 254-947-5577, [www.efirsttexas.com](http://www.efirsttexas.com) 12/19fn

## RENTAL/LEASE

**RESIDENTIAL Charming, spacious, 2/2/1 townhome for rent.** Clean!! 6 closets, vaulted ceiling, w/d closet inside. Walk to shopping center. Lawn care provided. 254-913-9813, [www.saladorentals.com](http://www.saladorentals.com). 0/2fnb

## RESIDENTIAL SALES

**Stunning retreat on .75** wooded acres with beautiful views. Verdant spaces, swimming pool, cabin, tool shed, covered BBQ areas, outdoor living spaces, stone pathways accent this 2 bedroom/ 2 bath home. 1207 Indian Trail \$399,000 Call Raney and Associates (254) 913-1215

**New Construction:** 4 bedroom, 2 bath on .69 acre corner lot. Granite, full sprinkler system, stainless appliances. 4519 Green Creek \$340,000 Call Raney and Associates (254) 913-1215

**For sale by owner: Beautiful 3/2/2 + FLEX ROOM,** 2300 sq ft home on HALF ACRE fenced corner lot. Side loading garage, 400 sq ft workshop/storage building. Over \$100K in upgrades since 2016. No city taxes - 2019 Property taxes \$3360. 342 O.W. Lowery \$347,500 Call 863-669-6802 or 863-669-6803 to view. 1/9fnb

**This gorgeous house** features a phenomenal open kitchen, living, & dining space to include a butler's pantry with wine fridge, second dishwasher, second full-sized fridge & pantry space. The 4 generous sized bedrooms each have their own private bathroom. The home boasts an oversized 3 car garage, mudroom & powder room, and to top it off, this "smart" home features a video doorbell, Alexa, smart hubs & switches and CAT5. The kitchen is accentuated by a beautiful tile backsplash, double ovens, farmhouse sink, granite counters & large island. The home has an indoor electric fireplace & outdoor wood burning fireplace - an entertainer's dream! Salado ISD. 11002 La Paloma Loop W, Salado. \$469,900. Century 21 Bill Bartlett. 947-5050.

**Beautiful Hill Country style farmhouse!** 3 BR, 2.5 BA, with a full length 2 story front porch to enjoy the panoramic views. The 5 acres is fenced and cross fenced for livestock, horses and exotics, includes a 4 stall barn and deep well for your animals. Large native oaks cover the property and

line the driveway for the ultimate Texas curb appeal. 14453 Settlements Road, Salado. \$424,821. Century 21 Bill Bartlett. 947-5050.

**Four bedroom home with an office & game room** on over 5 acres close to downtown Salado. 3 BR, office, living area, large dining area & kitchen on ground level. Game room, bedroom & one bath downstairs. Over 4,500 SF of living space with a wrap-around porch & deck overlooking a beautiful in-ground pool with water falls. Private backyard with a sports court and pond. \$649,999. 1611 Royal Street, Salado. Century 21 Bill Bartlett 947-5050.

**4 BR, 2.5 BA home** in an established neighborhood in Salado ISD. Minutes from downtown Salado or Belton. Over 3/4 acre with private backyard. Two dining rooms & one large living area. Split bedroom plan with Master bedroom suite consisting of two walk in closets, separate shower & tub, & door to back porch. Kitchen has center island, corner kitchen sink, pantry, and built in desk. Backyard porch has plenty of room to grill and seating area. 1221 Yellow Rose, Salado. \$345,000. Century 21 Bill Bartlett 947-5050

**Exquisite custom home with incredible curb appeal!** This spacious home is filled with desirable finishes including stone accent walls, stain grade cabinets, granite counter-tops, custom concrete hardwood floors and a three car garage. 10841 Stinnet Mill, Salado. First Texas Brokerage 254-947-5577 9/8tfnd \$599,900.

**This home features high ceilings with wood beams** and a custom rock fireplace. The detailed craftsmanship is shown through this open concept plan with clean lines, cool colors, and fresh design. Not only is the house gorgeous, but take a look around the almost 3 acres of land. 1411 Crystal Springs, Salado. \$549,900. Call First Texas Brokerage 947-5577.

**This one of a kind, custom home was built** for a growing family & entertaining. Take special notice of the octagonal dining room. Gorgeous wood flooring throughout all the main living areas. Need a room for projects and crafting? Then you need look no further. The large back guest bedroom is set up as a bedroom or craft room with its own separate sink. Master bedroom & large guest bedroom/craft room overlook the golf course. The enclosed sun room is the perfect place to enjoy your morning coffee in the quiet of your home while watching all of the outdoor activity. Large extended patio allows for outdoor entertaining. 2506 Hester Way, Salado. \$579,900. Century 21 Bill Bartlett 947-5050.

**Beautiful 4 BR, 2.5 BA in Salado ISD!** Home has many custom features inside & out! Spray foam insulation, oversized 2.5 car garage, stone walled courtyard fencing in the back yard, custom cabinetry, & granite countertops, 2 living areas & 2 dining areas with a large master suite downstairs. Outside the city limits with access to Mill Creek, the golf course, & a private community pool & pavilion! 11047 Stinnet Mill Rd., Salado. \$419,921 Century 21 Bill Bartlett 947-5050

**Belton bungalow** - cute and clean, perfect starter home or investment property. 2 bedroom, 1 bath on 984 sq ft corner lot. Nice trees, wood plank vinyl flooring. \$109,000 Call Raney and Associates (254) 913-1215

**PROPERTY FOR SALE 45 acres** on FM2268: Directly behind Brazos Valley Equine Hospital, survey and restrictions available. \$675,000 Call Raney and Associates: Jennifer (254) 421-2178

CONTINUED, ON PG. 3D

## NOTICE OF PUBLIC HEARING

Notice is hereby given that the Village of Salado Zoning Board of Adjustments will hold a public hearing at the Salado Municipal Building on **Thursday, July 16, 2020, at 6:30 p.m.** to consider the following: A request for variance from the Zoning Ordinance, Section 5.3.b.2, which prohibits fences in the front yard of any non-residential use for a property located at 301 N. Main Street in Salado, Bell County, Texas. Comments on this request from any member of the public may be presented in person, by mail (P.O. Box 219), or by email ([clee@saladotx.gov](mailto:clee@saladotx.gov)). The public will be granted an opportunity to speak at the hearing. Additional information concerning the proposed action is available for review at the Village of Salado Municipal Building, 301 N. Stagecoach Road, Salado, Texas.



**10.1 acre lot**, improved pastureland, owner will fence entire property, part of 40 acre parcel. FM 2484 frontage \$275,000 Call Raney and Associates: Jennifer

(254) 421-2178

**STORAGE**

**StowAway Storage**  
Household - Commercial 10X10 -

10x20-22x40 Clean, lighted, fenced, Key punch entry. 947-5502 or 721-1807

**WELDING**

**McGregor Welding Supply**, old fashion friendly service, Belton. We have all your welding needs. Sales and service. (254) 933-WELD

**Fall Classes start August 24**

**CTC outlines return to campus**

Central Texas College (CTC) will follow a phased return-to-campus plan for students and employees beginning June 29 and continuing into the fall 2020 semester. The gradual return to campus is designed to promote safety and social distancing. "We understand students, staff and faculty need a level of certainty about what to expect when they return," said Chancellor Jim Yeonopolus. "Our goal is to protect their health and safety while continuing our critical mission of education and workforce development."

On June 29, many full-time personnel will return to campus to support delivery of student and academic services. The next phase of CTC's return plan calls for an increase in onsite student support services and staffing on July 27. Additional full- and part-time staff and faculty will return to work onsite while others continue to work remotely.

During these two phases, remote support will remain the first option for student services and support. However, limited in-person support services such as advising, registration, tutoring, library services and testing will be available by appointment only. "This will help us manage the number of people in an area at any given time," said Yeonopolus. "We encourage students to take advantage of the virtual support whenever possible."

Summer II semester classes beginning in July will include some student on-campus participation. Students in career and technical programs such as Craftsman Trades, Diesel, HVAC, Graphics and Printing and Welding will complete the first 40 percent of their graded tasks online, then schedule lab time to perform hands-on learning activities and performance exams.

The first day of the fall semester, August 24, marks the next phase of the return-to-campus plan when the majority of CTC full- and part-time staff and faculty will return to campus. Classes for the fall semester will be delivered in a blended format combining both classroom and online work. Hands-on labs may be performed in individual or small group settings. The number of students physically in a class will be lowered to ensure six feet of social distancing.

"Even though classes will combine online and in-class instruction, faculty will be prepared to move

classes completely online if necessary due to local, state or national directives regarding COVID-19" explained Yeonopolus. "All classes will move online after Thanksgiving to conclude the semester."

During the fall semester, Adult Education classes and services will be provided on a limited basis and select Continuing Education programs and courses will also be offered. The CTC Bookstore will provide online and in-store services and on-campus food services will be open for pick-up and delivery service only. The Mayborn Science Theater and campus gym will be open in accordance with CDC and state guidelines while the campus residence hall will remain closed during the semester. The Child Development Center opening is pending. Campus facilities for events and activities will also remain closed to the general public.

Yeonopolus noted students and employees will be required to wear a mask or face covering when they return to campus. "Face coverings or a mask will be required when entering a building and in all common areas," he said. "They are also required when programs require working with others in close proximity. Face coverings may be removed in the classroom or lab if seating accommodates the six feet social distancing guidelines and they are not required when one is alone or the six feet social distancing guideline can be maintained."

CTC's plans were developed in accordance with Executive Orders issued by Governor Greg Abbott and the guidelines and recommendations of the Texas

Department of State Health Services, the Centers for Disease Control and Prevention and Texas Higher Education Coordinating Board. "Our goal is to return to work and have students return to campus in a safe and responsible manner," said Yeonopolus. "We cannot

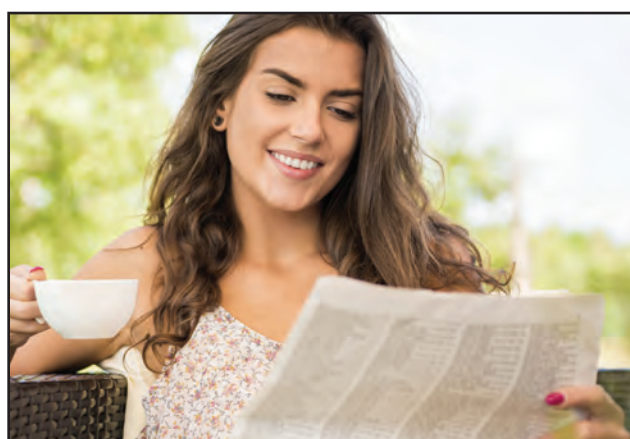
predict the course of the COVID-19 crisis, therefore any plan we have in place remains fluid and subject to change for the health and well-being of our students and employees."

The complete plan may be found at [www.ctcd.edu/open](http://www.ctcd.edu/open).

**Salado Police Department Reports June 22-28**

Call Type Description	#
Agency Assist	2
Alarm Business	3
Alarm Residential	2
Assault	1
Burglary of a Motor Vehicle	1
Calls For Service	72
Citations	22
Crash	5
Fireworks	2
Found Property	2
House Watch	66
Medical	3
Open Door	1
Reckless Driving	3
Stalled Vehicle	2
Stranded Motorists	2
Suspicious Circumstances	8
Violation of Village Ordinance	1
Welfare Concern	1

**Chief's Notes:** As a reminder, please remember to lock your vehicles and homes in both the day and night. Do not leave any valuables in your vehicles overnight or in plain view. Let's make it difficult on the nefarious rapsallions who might want to prey on us.



**FULL COLOR newspaper advertising...**  
Publish an ad each week and receive **Discounted rates on Quarter, Half, and Full page ads**  
**Change Copy & Ad Size as needed**  
[advertising@saladovillagevoice.com](mailto:advertising@saladovillagevoice.com)

Contact Marilyn today for advertising information  
**254-947-5321**  
Friday noon deadline for next Thur.

**Time for your TANKLESS WATER HEATER Annual Service?**  
Call Bubba Moffatt  
**254 289-5986 (local)**  
**Moffatt & Daughters Plumbing Co.**  
Rinnai authorized service provider RMP 17002 Bubba Moffatt

**Window Washing Wonders**  
Professional Window Cleaning and Power Washing Services  
Gutter & Blinds Cleaning  
  
**Zack Tumlinson**  
Call or Text (281) 682-0142 office (254) 231 3289  
WindowWashingWonders@gmail.com

You can Always Rely on  
  
**McGREGOR WELDING SUPPLY CO., INC.**  
Welding Equipment and Supplies  
110 South Wheat Road  
Belton, Texas  
254-933-WELD

**AQUA pure**  
• Water Softeners  
• Water Treatment  
• Reverse Osmosis  
• Whole-house Filtration  
Free Hardness Test and Estimate  
Call Today  
**254.228.7526**  
[www.aquapuretx.com](http://www.aquapuretx.com)  
Serving Salado & Central Texas since 1995

**Salado Plumbing**  
"We are ready"  
In home repairs  
**947-5800**  
Master LIC M 16892  


**Clear View Window Cleaning**  
Let the light shine through  
Windows | Gutters  
Powerwashing  
Ceiling Fan Cleaning  
**(254) 931-6172**  
[ClearViewWindows\\_Belton@yahoo.com](mailto:ClearViewWindows_Belton@yahoo.com)

TEXAS STATEWIDE CLASSIFIED ADVERTISING NETWORK  
**TexSCAN**  
TexSCAN Week of **June 28, 2020**

**ACREAGE**  
Hunting/investment/recreational property. We have some of the best in Texas! From the Hill Country (Edwards, Menard, Coke, Val Verde County, free ranging exotics) to South Texas (Kinney, Duval, Live Oak County, whitetail, hogs). Large or small acreage. 30-year fixed rate owner financing, only 5% down. Call toll-free or email for individual prices and terms, [www.ranchenterprisesltd.com](http://www.ranchenterprisesltd.com), 800-876-9720.

**CHARITY**  
Donate a boat or car today to Boat Angel. 2-Night Free Vacation. Sponsored by Boat Angel Outreach Centers to stop crimes against children. 800-700-BOAT, [www.boatangel.com](http://www.boatangel.com).

**EMPLOYMENT**  
Lateral Police Officer, Jackson WY, \$54,144 - \$78,445 DOQ. Up to \$350/mo Spanish fluency. \$15,000 signing/stay bonus. Advancement program, take home car, rental assistance & housing provided. Testing July 7 and 8. Visit: [www.jacksonwy.gov/jobs](http://www.jacksonwy.gov/jobs) Deadline: Friday, July 2 DFWP/EEOP.

**GENERATORS**  
GENERAC Standby Generators. The weather is increasingly unpredictable. Be prepared for power outages. FREE 7-year extended warranty (\$695 value!). Schedule your FREE in-home assessment today. Call 1-855-704-8579. Special financing for qualified customers.

**HUNTING**  
Lease Your Land for Hunting. Prepaid annual lease payments. \$5M liability insurance. We handle everything for you. Base Camp Leasing, 866-309-1507, [www.basecampleasing.com](http://www.basecampleasing.com).

**INSURANCE**  
Attention Insurance Agents - we buy health and life renewals. Cash up quickly. For information, call or text 972-898-4616, [parchibald@stfamerica.com](mailto:parchibald@stfamerica.com).

**INTERNET**  
AT&T Internet. Starting at \$40/month w/12-mo agmt. Includes 1 TB of data per month. Get More For Your High-Speed Internet Thing. Ask us how to bundle and SAVE! Geo & svc restrictions apply. Call us today 1-855-439-5457.

**MAINTENANCE**  
Eliminate gutter cleaning forever! LeafFilter, the most advanced debris-blocking gutter protection. Schedule a FREE LeafFilter estimate today. 15% off and 0% financing for those who qualify. PLUS Senior & Military Discounts. Call 1-855-815-5722.

**OIL AND GAS RIGHTS**  
We buy oil, gas & mineral rights. Both non-producing and producing including non-Participating Royalty Interest (NPRI). Provide us your desired price for an offer evaluation. 806-620-1422, [LoboMineralsLLC@gmail.com](mailto:LoboMineralsLLC@gmail.com). Lobo Minerals, LLC, PO Box 1800, Lubbock, TX 79408-1800.

**MEDICAL**  
Portable Oxygen Concentrator May Be Covered by Medicare! Reclaim independence and mobility with the compact design and long-lasting battery of Inogen One. Free information kit! Call 866-747-9983.

**Life Alert.** One press of a button sends help FAST, 24/7! At home and on the go. Mobile Pendant with GPS. FREE First Aid Kit (with subscription.) CALL 844-831-1525. FREE Brochure.

**DENTAL INSURANCE** from Physicians Mutual Insurance Company. NOT just a discount plan, REAL coverage for 350 procedures. Call 1-855-901-0467 for details. [www.dental50plus.com/txpress](http://www.dental50plus.com/txpress). 6118-0219

**Texas Press Statewide Classified Network**  
273 Participating Texas Newspapers • Regional Ads  
Call Salado Village Voice at 254-947-5321  
or email [advertising@saladovillagevoice.com](mailto:advertising@saladovillagevoice.com)

NOTICE: While most advertisers are reputable, we cannot guarantee products or services advertised. We urge readers to use caution and when in doubt, contact the Texas Attorney General at 800-621-0508 or the Federal Trade Commission at 877-FTC-HELP. The FTC web site is [www.ftc.gov/bizop](http://www.ftc.gov/bizop).

**LONE STAR GRADING & MATERIALS**  
  
COMMERCIAL INDUSTRIAL RESIDENTIAL  
EXCAVATION • GRADING • SITE PREPARATION  
YARDS • LOT CLEARING • PADS • ROADS  
DRIVEWAYS • PARKING LOTS  
ALL TYPES DIRT WORK • MATERIALS & HAULING  
\*\*\*FREE ESTIMATES\*\*\*  
**(254) 947-0149 or (254) 933-7900**



# Salado Fire Department Reports June 21-27

<b>JUNE 21</b> <b>1:33-1:59 p.m.</b> 1500 Block Oak Park Ln Apparatus: 1/Personnel: 1 Fall	<b>9:42-10:22 p.m.</b> 400 Block Main St Apparatus: 2/Personnel: 3 Assault	Motor Vehicle Accident - No Injuries	Apparatus: 1/Personnel: 1 Difficulty Breathing	Apparatus: 1/Personnel: 2 Fall	35 Apparatus: 1/Personnel: 1
<b>7:24-7:45 p.m.</b> 11000 Block Ridgewood Dr Apparatus: 2/Personnel: 2 Sick Person	<b>JUNE 22</b> <b>4:50-5:03 p.m.</b> Interstate 35 @ 282 NB Apparatus: 4/Personnel: 8 Motor Vehicle Accident - No Injuries	<b>11:53-12:19 p.m.</b> Chisholm Ct Apparatus: 1/Personnel: 1 Sick Person	<b>3:07-3:31 p.m.</b> 2200 Block Indian Trl Apparatus: 2/Personnel: 2 Stroke	<b>12:06-1:05 p.m.</b> 700 Block Arrowhead Dr Apparatus: 1/Personnel: 2 Fall	<b>2:47-3:26 p.m.</b> 1100 Block Old Mill Rd Apparatus: 2/Personnel: 2 Chest Pain
<b>8:55-9:55 p.m.</b> 12000 Block Lyndal Ln Apparatus: 2/Personnel: 2 Chest Pain	<b>JUNE 23</b> <b>8:17-8:55 a.m.</b> Interstate 35 @ 285 SB Apparatus: 3/Personnel: 4	<b>6:02-6:23 p.m.</b> Armstrong Rd Apparatus: 3/Personnel: 3 Motor Vehicle Accident - No Injuries	<b>5:50-6:16 p.m.</b> 1000 Block Great Oaks Dr Apparatus: 1/Personnel: 2 Seizure	<b>6:51-7:42 p.m.</b> 900 Block Robertson Rd Apparatus: 4/Personnel: 4 CO2 Alarm	<b>JUNE 27</b> <b>10:13-11:00 p.m.</b> 10000 Block Cedar Knob Church Rd Apparatus: 2/Personnel: 2 Assault
		<b>JUNE 24</b> <b>5:19-5:40 a.m.</b> 11000 Block Cedar Knob Church Rd	<b>JUNE 25</b> <b>11:40-12:14 p.m.</b> 22000 Block Hill Rd	<b>JUNE 26</b> <b>2:40-3:06 p.m.</b> 15000 Block Interstate	

254-947-5577



FirstTexas.com

## RESIDENTIAL FARM & RANCH COMMERCIAL

GLENN HODGE  
254-718-2000

RYAN HODGE  
254-541-2255

DOTTIE SHIRLEY  
254-721-9700

ALLAN PERSKY  
254-760-2924

BUDDY MCBRYDE  
254-760-4058

LARRY WENTRCEK  
254-718-5326

JERRY ROBERTS  
254-760-6576

TIA DOSKOCIL  
254-718-9442

JOSH JACOBSEN  
254-541-3319

WICK THOMAS  
254-718-1404



**3217 Stratford Dr**  
View this luxurious home with magnificent trees & a porte-cochre grand entry. Step inside, & you will be welcomed with high ceilings & grand staircase.  
**\$474,900**



**1060 Ferguson Mill Road**  
Beautiful Southern curb appeal, great location, and a very livable floor plan only begin to describe this new build from White River Homes.  
**\$489,900**



**5095 Elm Grove Road**  
Come to the country to see this lovely well-maintained home in belton ISD on 1.3 acres with trees and a workshop!  
**\$359,900**



**421 Rose Way**  
Imagine living amongst majestic Live Oak trees and walking distance to downtown Salado Shopping and restaurants. This Victorian Beauty offers spacious living and an incredible location!



**1146 Shepherd DR, Salado**  
One of a kind English Cottage home set in a tranquil neighborhood. Once you enter, notice the beautiful hardwood floors throughout the entire downstairs  
**\$349,900**



**8342 Spring Creek**  
Beautiful hill country home in the coveted Spring Creek subdivision! Step inside and immediately notice the thought and detail that went into building this home from S & G Ventures.



**8324 Cates Creek Drive**  
With this Hill Country Ranch, Randy Taylor brings a more traditional design still paired well with modern flair.  
**\$499,900**



**12246 Blackberry Rd**  
Beautiful home just outside of Salado city limits! Large formal dining, breakfast area, and oversized living room perfect for all your entertaining needs!  
**\$359,900**



**8425 Anna's Spring Drive**  
Randy Taylor brings a beautiful mix of modern flair with traditional warmth inside this modern farmhouse.  
**\$529,900**



**903 Rose Way, Salado**  
Your chance to own this picturesque Bed and breakfast in the heart of downtown Salado  
**\$950,000**



**300 Royal Street, Salado**  
Located in the center of Salado's hotspot is this large, climate controlled building surrounded by Salado Creek, wineries, breweries, restaurants and bed and breakfast lodgings



**Royal Ridge Subdivision**  
Rare opportunity to purchase Hill Country acreage minutes from downtown Salado & Mill Creek Golf Course. An abundance of options: Live Oaks, small creek, beautiful bottom land, coastal pastures, hill top views

## FARM & RANCH • COMMERCIAL

### LOTS

**Mill Creek Meadows** - Brand new subdivision with lots on the golf course and mature trees! Starting at \$59,900 with 48 lots available  
**Mystic River** - Lots overlooking Leon River. Starting in the \$129,000 for waterfront or \$49,900 for interior lots  
**Spring Creek** - Salado's newest community. A must see subdivision off of FM2484 Lots starting at \$60,000  
**2 Lots on Van Bibber** available \$42,500  
**1 Lot in Mill Creek** \$29,900  
**9860 Hodge Canyon**

### NEIGHBORHOODS

**Salado Mills** - Overlooks Salado Creek, within golf cart driving distance of Salado shopping and Mill Creek Golf Course. Premier subdivision features community pool and pavilion and is located in Salado ISD while also benefiting from a low tax rate  
**Spring Creek** - Salado's newest neighborhood, West of town on FM2484 Beautiful hardwood trees. The peaceful spot you've been searching for to build your new home. Few miles out of Salado, a short drive from Belton, Harker Heights and Georgetown.  
**Mill Creek Meadows** - Dream home on a golf course? Whether you are a golfer or just enjoy overlooking a well-maintained course from your home, Mill Creek Meadows is for you! Gated, community park within strolling distance of Mill Creek Golf Course and a golf cart ride away from Salado shopping and dining.  
**Mystic River** - Lots overlooking the Leon River. Neighborhood shaded by a canopy of Live Oak and Pecan trees, walk from your back door to your personal dock at the river bank. Watch the kids plunge into the river from the rope swing, paddle your kayak, all while centrally located between Belton and Temple.

### ACREAGE

**10 Acres** along I-35 frontage, sewage available \$1,750,000  
**30 Acres** on the Leon River, Belton  
**107 Acres** with 4,500 feet on Leon River  
**11.5 Acres** off of FM2268 in Holland \$127,500

### COMMERCIAL

**7.695 acre** Investment Property in Temple off South 31st ST, \$649,900



80 S. Main Street Salado, Texas 254-947-5577

www.FirstTexas.com

