

# SALADO Village Voice

Volume XIV, Number 31 Wednesday, October 28, 1992 #3 Post Oak Center (817) 947-5321 Distributed Free

## Halloween Activities

The Salado Public Library welcomes all Trick and treaters to the Library on Oct. 31, where the Village Artists will be painting faces 3-4 p.m..

Following the face painting the Salado National Bank will host their annual Halloween Party for area families and children. The bank celebration will be held 4-5:30 p.m. Among the activities is a costume contest, coloring contests and an appearance of a magician.

Parents should plan for their children, infant though age 10 to attend.

## Calendar of Events

Nov. 2 - 2 p.m. Monday Club meets at the Salado United Methodist Church  
Nov. 4 - 6 p.m. Chamber of Commerce sponsored Ice Cream Supper at the Salado High School cafeteria honoring Salado Teachers.

Nov. 5 - 9 a.m. Merchants Association - meets in the Chisholm Trail Room at Stagecoach Inn

Nov. 5 - 11:30 a.m. Republican Women Luncheon at Stagecoach Inn Dining Room

Nov. 9 6 p.m. Chamber of Commerce Board of Directors at Salado High School

Nov. 13-14 Central Texas Area Museum on Main Street Scottish Game and Gathering of Clans

Nov. 19 6:30 p.m. Salado Historical Society general membership meeting and chili supper at Salado Elementary School Cafeteria

Nov. 24 - 6:30 p.m. ABWA at the Church of Christ

Nov. 28 9 a.m. Tri-County Democratic Women meet at the Great Southwest Restaurant, Belton.



The Annual Scottish Games is set for Nov. 13-15 in Salado, featuring Highland Dance, exhibitions, pipe band and piping contests and many other events. For more information, contact the Central Texas Area Museum at 947-5232.

## Peoples will buy local branch of Bluebonnet

Peoples National Bank announces the execution of a Purchase and Assumption Agreement with Bluebonnet Savings Bank, F.S.B. regarding acquisition of the Salado, Texas Bluebonnet branch. This acquisition is scheduled to be completed on Nov. 16, 1992. At that time, the Salado branch will become a full-service branch of Peoples National Bank offering extended hours and additional services to the Salado market.

The Salado branch, which currently has deposits in excess of \$10 million, will be the third location for Peoples National Bank in Bell County. Peoples National, which was established in 1907, is headquartered in Belton and operates a major branch facility in Temple. As of September 30, 1992, the

bank has total assets of \$97,295,000 with deposits totaling over \$90 million.

In announcing the acquisition, Peoples National's president, Wendell C. Williams, stated, "The management and staff of the bank are excited about the opportunity of expanding our services to the Salado market. With a full-service branch location, we will be able to better meet the needs of our existing customers as well as expand our presence in Bell County. Salado is a vibrant community, and we are pleased to be a part of its future."

In the acquisition, Peoples National will assume all of the deposits of Bluebonnet customers and purchase certain loans. Peoples National Bank is a member of the Federal Deposit Insurance Corporation.

## Historic District guidelines up for consideration

by **Tim Fleischer**  
Editor-in-Chief

Salado is booming. Just ask any local realtor or builder.

People are moving to Salado from Dallas, Houston, Austin and other metropolitan areas.

"We believe everyone here loves Salado and would not want the growth and change we are going to experience here to alter the historic integrity of the village," Dr. Douglas Willingham said in a presentation to the Salado Historical Society in March 1990.

The question, then, is this: how can Salado protect its historic integrity without facing such divisive issues as incorporation and zoning laws?

The Salado Historical Society began taking steps to create and define the

boundaries of an historic district for Salado. Through a cooperative effort of property owners within the district, Salado's historic integrity could be maintained for the future.

The Historic District Committee of the Salado Historical Society has worked for two years on composing guidelines for new construction, restoration, renovation, landscaping and signs within the historic district. The guidelines have borrowed much from guidelines written for historic districts in communities like Georgetown, Granbury and Goliad.

"Much of our writing is original, though," said Dr. Robert McConnell, who has served on the committee since its inception in 1990. "Because Salado is an unincorporated village

and since we have no means to enforce the guidelines, our approach had to be different."

"These guidelines are being looked upon by other unincorporated communities throughout Texas as a model for them to follow," McConnell added.

"Main Street, the heart of our historic district, is the golden goose of this community. Our appeal to the visitors who directly support our merchants and indirectly support other services, as well as property values in surrounding areas is dependent upon Salado retaining its look and its charm, both architecturally and in the use of land," Willingham said.

"We respect and appreciate the traditional rights of the individual property owners. However, when in exercising these rights in

an unincorporated, un-zoned community that individual chooses to alter or destroy an historic structure or erect a building or sign that affects the property value or livelihood of his neighbor, the concept of obligatory compliance rather than voluntary compliance with a community standard such as this historic district will gain acceptance," Willingham said.

The Historic District guidelines are one way to avoid incorporation and future zoning laws and ordinances. Because Salado is an unincorporated village and because the Historic District Committee is a committee and not

CAR-RT-SORT  
BULK RATE  
U.S. POSTAGE PAID  
PERMIT NO. 50  
SALADO, TEXAS 76571

# UIL allows girls to play football

## FORUM

*an open exchange of ideas*

### Newsies

rated G

starring Robert Duvall, Ann-Margaret, Max Casella, Christian Dale, David Moscow

Our rating: \*\*\*\*

by **Tim Fleischer**

*Editor-in-Chief*

With music composed by Danny Troob and choreography by Kenny Ortega and Peggy Holmes, *Newsies* is a musical reminiscent of the 40s.

It has been too long since Hollywood has produced a musical (with the exception of *Beauty and the Beast*, and others of that ilk which are animations set to music).

Set in New York during the 1890s, *Newsies* follows the battle between newspaper magnate Joseph Pulitzer (Robert Duvall) and the paperboys; orphans and streetkids who sold papers on the corners.

Appearing as Racetrack is Max Casella, Doogie Howser's nerdy buddy on TV. His role in *Newsies* is as a streetwise orphan who always has an inside tip on the races.

Unknowns David Moscow and Christian Dale share the lead characters as Jack Kelly and his partner Dave.

*Newsies* is pure entertainment; witty, and light. If you can stand the overemphasized New Yoik accents, it is great.

#### Our rating system

\* A dog \*\* A dog with spots \*\*\* Reaches mediocrity  
\*\*\*\* Better than most \*\*\*\*\* One of the best

The University Interscholastic League last week passed an ill-advised rule that would allow girls to participate in varsity and junior varsity football starting next fall, provided the State Board of Education goes along with the plan. This, they, in all likelihood, will do in the rather stupid belief they are working towards gender equality in Texas sports.

What we predict is going to happen - sooner or later - if all this foolishness comes to pass, is that some young ladies are going to get seriously hurt; some boys - not wanting to hurt the girls will ease up in their tackling or blocking and get themselves injured as well; coaches will get criticized if they do - or do not - play the girls and school boards and administrators will be faced with lawsuits filed by a few cuckoo parents who will do anything their kids want them to do. It is a plan made in trial lawyers heaven. Taxpayers will eventually have to pick up the bill on this bit of unnecessary foofaraw when school districts pay either the medical or legal bills as they come forth in large numbers.

Since the state board of education has the final

### Off the Record

by **Ken Clapp**



word on this matter and since Saladoans and all of Bell County have a personal representative on that board, it might be a good idea to contact this elected official if you feel so inclined. His name is Will Davis and his phone number in Austin is 512-478-5671. He can be reached by mail at 200 Perry Brooks Building, Austin, 78701.

#### Strange Scenario

This time next week we will know who has won the race for President of the United States. Right now it looks like a lock for Bill Clinton but don't bet the farm just yet. In fact - this is one year you may want to wait until the last vote is counted - it could be that close. Down in Austin there is a lot of conjecturing going on by some leading Democrats as to a series of job changes that might take place should the Arkansas Governor win first prize in this year's grand political race. Some of this has even broken into print in a few papers across the State. Goes something like this - Clin-

ton, if he wins Texas, will tap Senator Lloyd Bentsen for a top cabinet post, Treasury most likely. Governor Ann Richards would then name herself as Senator from Texas and resign. (Yes, she can do this according to current Texas law) Lt. Governor Bob Bullock would move up and serve out Richards term which ends January 1995. Senators would then caucus and select their own presiding officer (President) who would remain until the next election - also in 1995.

Then, the saga continues, power hungry Comptroller John Sharp would make a move for the Lt. Guv's spot since beating "Governor" Bullock for a second term would be unwise. Democrat Sharp would have to take on GOPer Kay Bailey Hutchison, our current Treasurer, who also drools for higher office and the musical chairs would continue.

Sounds like fun? Stranger things have happened in Texas politics but all related back to a Clinton win in Texas and the electoral college. Stay securely tuned next Tuesday!

See Record, Page 16



## Beauty And The Beast

rated G from Disney

When the film's beautiful book-loving heroine, Belle, sings the first of an unprecedented three Oscar-nominated songs, you too will fall instantly under its spell. However, it is the spell of an enchantress that opens this classic fairy tale, turning a cruel prince into a hideous beast. His stubborn pride compels him to remain in his bewitched castle inhabited by Lumiere the lovestruck candelabra, Cogsworth the pompous clock, the kindly Mrs. Potts and an inquisitive little teacup named Chip. To break the spell, the Beast must win Belle's love before the last petal falls from an enchanted rose. With a colorful cast of endearing Disney characters, *Beauty and the Beast* will enthrall both young and old

## IGA Village Foods Video

100 Mill Creek Dr. 7 am-9 pm daily

### Serving Your Investment Needs

**G. ROGER DANIEL**

*First Vice-President, Investments*



**DEAN WITTER REYNOLDS, INC.**

One North Main St.  
Temple, TX 76503

(817) 774-8447  
(800) 786-3340

Temple  
Toll Free

### SALADO Village Voice

Published every Wednesday

#3 Post Oak Center

Mail address: P.O. Box 587, Salado, TX 76571

Phone: 817/947-5321 FAX: (817) 947-9479

Open 10am-5pm Mon's, Wed's-Fri's

Closed Tues, weekends

Deadlines: 5 p.m. Fridays

**Editorial policies:** Opinions on the Forum editorial page are those of the writer, not necessarily the owners or employees of the *Salado Village Voice*. All letters to the editor should be signed and have a phone number and address for verification. The editor reserves the right to reject and/or edit any letter written to him. Letters should address issues, not personalities and should be concise and constructive in approach.

Tim Fleischer, *Editor-in-Chief*  
Marilyn Fleischer, *Managing Editor*  
Ken Clapp, *Political Commentary*

# First Hand

## Developing Discipline in schools

by **Steven Ervin**  
Salado Superintendent

There are many factors which contribute to excellence in education. Among the most prominent of these factors is the development of a school environment which reflects order and discipline.

Discipline is achieved when learning is valued and teachers are respected; disruptive behavior is dealt with firmly, fairly, and quickly; students are expected to attend classes and complete assignments; high academic standards are expected to be met and when learning entails effort, hard work and sacrifice.

To maintain this kind of discipline, cooperation is needed from all elements of society, especially parents. By supporting and enhancing discipline in the school, parents foster a situation in which teachers can spend their time engaged in the process of teaching rather than consuming valuable time dealing with disruptive behavior and poor learning attitudes.

The following are suggestions for parents as to what they can do to promote better discipline in

schools.

1. Become knowledgeable of the behavior policy of your child's school. What conduct is expected in the classroom and on the school grounds? What procedure is followed when problems arise?

2. Instill in your child a sense of responsibility for what he/she says and does. Children should realize that disruption and disorder in the classroom undermines the educational effort and hurts everyone.

3. Encourage respect for authority.

4. Create an atmosphere where your child feels secure about discussing school related concerns and problems. Discuss their concerns and problems with your child's teacher or administrator.

5. Review your own attitude toward discipline. If parents don't consistently enforce reasonable and firm rules then perhaps it is too much to expect such discipline within the schools.

6. Most importantly, parents must be a model of respect for the learning process. A key to the attainment of excellence in education is the rededication to learning within the home.

# Voter Guide '92



**GEORGE BUSH** Republican  
**BILL CLINTON** Democrat  
**ROSS PEROT** Independent

	SUPPORTS	OPPOSES	OPPOSES
Balanced Budget Amendment	SUPPORTS	OPPOSES	OPPOSES
Abortion on Demand	OPPOSES	SUPPORTS	SUPPORTS
Parental Choice in Education (Vouchers)	SUPPORTS	OPPOSES	SUPPORTS
Voluntary School Prayer Amendment	SUPPORTS	OPPOSES	OPPOSES
Homosexual Rights	OPPOSES	SUPPORTS	SUPPORTS
Raising Income Taxes	OPPOSES	SUPPORTS	SUPPORTS
Term Limits	SUPPORTS	OPPOSES	OPPOSES
Death Penalty	SUPPORTS	SUPPORTS	SUPPORTS
Increased Funding for SDI	SUPPORTS	OPPOSES	NO RESPONSE
Line-Item Veto	SUPPORTS	SUPPORTS	SUPPORTS
Tax-Funded Abortion	OPPOSES	SUPPORTS	SUPPORTS
Condom Distribution in Schools	OPPOSES	SUPPORTS	SUPPORTS

Paid for and authorized by Bell County Christian Coalition, P.O. Box 1260, Temple, TX 76503

## District FROM Page 1

a governing body, the guidelines are suggestions to property owners of how to maintain the integrity of historic Salado.

"Support voluntary compliance of the architectural and site guidelines of the historic district and show the rest of us that peer pressure and community spirit is still enough to protect our town from unbridled growth," Dr. Willingham said.

The Salado Historical Society has published

guidelines of the Historic District Committee as a special insert to the *Salado Village Voice* mailed to 1,100 Salado residents.

A ballot is enclosed with the guidelines, requesting your input by Nov. 10 1992. Please read the guidelines. If they are sound policy in your opinion, vote yes on the ballot and return it by mail.

If the guidelines are a bunch of malarkey in your opinion, vote no and return it by mail.

### 6.46% Tax-Free Bonds

**MICHAEL K. GUNTER**  
208 E. CENTRAL  
BELTON 939-5824



**Edward D. Jones & Co.**

Member New York Stock Exchange, Inc. and Securities Investor Protection Corporation

\* Rate expressed as yield to maturity. Effective 10-20-92. State and local taxes may apply. Subject to availability. Market risk is a consideration on investments sold prior to maturity.



ON SALE AT DAIRY QUEEN. OCT. 26-NOV. 8, 1992.

### COUNTRY BASKET\*

**\$1.99**

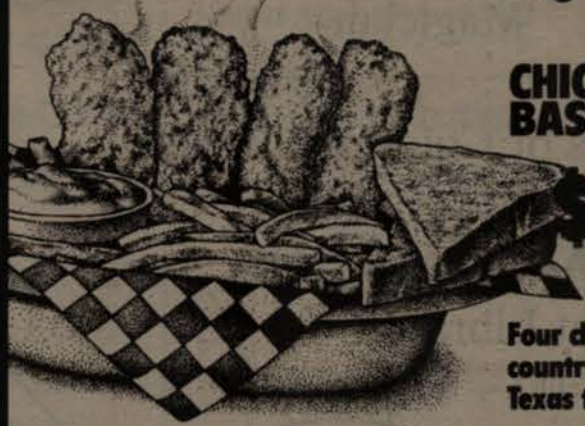
Four beef steak fingers, country gravy, fries, Texas toast



### CHICKEN FILLET BASKET

**\$2.99**

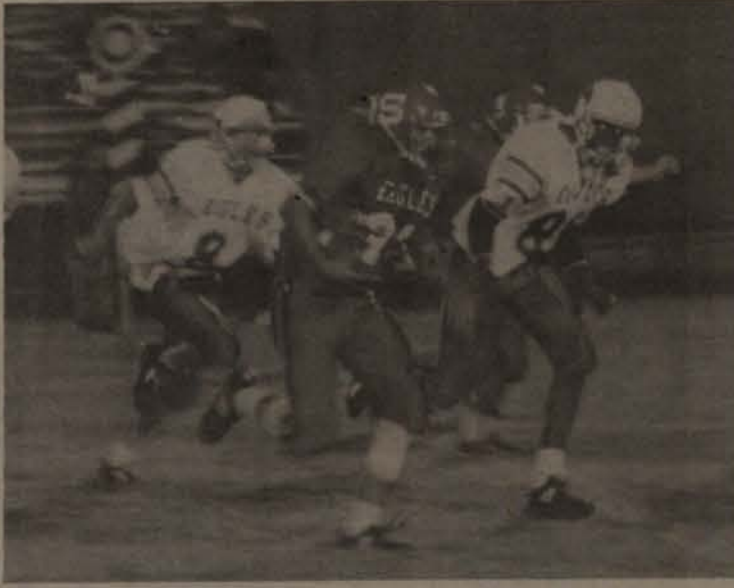
Four chicken fillet strips, country gravy, fries, Texas toast



At participating Dairy Queen stores. © Reg. U.S. Pat. & Tm. Off. Am. D.Q. Corp. \*TM Reg. U.S. Pat. & Tm. Tx. D.Q. Op. Coun. © Tx. D.Q. Op. Coun.

# Eagles in thick of district hunt

Salado needs win Oct. 30 in Thorndale after blasting Lexington 43-6



(photo by Marilyn Fleischer)

Salado Eagle Richard Berumen breaks through the Lexington defense for a long run. Berumen carried for over 100 yards and a touchdown as Salado spanked Lexington 43-6.

by **Tim Fleischer**  
Editor-in-Chief

If the Salado Eagles defeat the Thorndale Bulldogs 7:30 p.m. Oct. 30 in Thorndale they will be in the thick of the hunt for one of the two play-off spots for this district. But if they lose, Salado's hopes for a play-off team will be dashed.

The scenarios could play out two ways to send Salado to the playoffs: Salado defeats Thorndale by more

than 11 points, which will give the Eagles the spread; Salado defeats Thorndale and Liberty Hill loses to Florence this week.

Of course, Salado will have to beat Hutto, in November to qualify for the play-offs.

But, from the Oct. 23 game against Lexington, Salado evidenced that it has the talent to beat any team in the district, including the Bulldogs, undefeated in district play. "We will have to be at our best to beat Thorndale," said Coach Dan Wasik. "Thorndale can run the option, run traps and throw the football. They are solid."

The Eagles spanked Lexington 43-6 at Eagle Field to up their record to 5-2-1 and 2-1 in district.

Jeremy Fischer led the team with three touchdown runs. He ran for a 46-yard TD in the first quarter. He had two TD runs in the second quarter of 12 yards and 11 yards.

Richard Berumen led all rushers with 114 yards,

including a 66-yard TD run for the first Eagle score and a 4 yard TD run in the third quarter.

All together, Eagles backs carried 39 times for 277 yards. The Eagles threw only four times, completing 2 passes for 10 yards.

Leading the defense were Courtney Renfro with 14 tackles, Danny Hill with 12 tackles, and Jessie Finger, who had three tackles for losses.

Jason Hosch intercepted two Lexington passes and Steven Sather picked off one pass for Salado.

Bubba Moore converted on five of the six point-after attempts. He also booted a 42-yard field goal through the uprights early in the fourth quarter. He punted three times for an average of 41 yards.

In the games to date, Salado 2,042 total offensive yards. The Eagles have outscored opponents, 163-108 through eight games.



*Halley*  
*House*  
bed & breakfast

- Seven rooms: all private baths, antique furnishings (selected items for sale)
- Handicap Facilities
- Gathering Room for 100+ people available for meetings, parties, family gatherings, weddings, etc.,

**North Main Street Salado, Texas**

Cathy & Larry Sands, Innkeepers  
Call us at (817) 947-1000

**HALLOWEEN PARTY**  
AT  
**SALADO NATIONAL BANK**

Saturday, October 31st  
4:00 - 5:30 p.m.

**REFRESHMENTS**

Costume Contest  
Begins at 4:30

Magician

Results of Coloring Contest

FACE PAINTING  
at Library from  
3:00 - 4:00 p.m.

**INFANT CHILDREN THRU AGE 10**

**5th Annual Fall  
Arts & Crafts Show**

Bell County Expo Center Belton  
**November 14 & 15**

A Top Notch Production



**Serving your investment needs**

Stocks • Bonds • IRAs  
Mutual Funds • Annuities

**A.G. Edwards**  
INVESTMENTS SINCE 1887  
3407 South 31st St.,  
Temple, TX 76504 AN-IM-119-SMC

Mike Miller  
SIPC 1-800-460-1504

**SALADO DANCE ACADEMY**  
**947-8677**

**Exceptional Performers**

Sarah Carter: Ballet  
Hope Evans: Jazz  
Sarah Holloway: Jazz & Tap  
Chelsea Royston: Ballet  
Nicole Whitacre: Jazz

## Marsh weds Gerstenberg in double ring ceremony

Christie Marsh and K. Paul Gerstenberg wed in a double ring ceremony August 8, 1992 at the Second Baptist Church in Bridge City, Texas with Rev. Micheal Anderson officiating.

Parents of the bride are Mr. and Mrs. Stephen Bob Marsh of Bridge City. The groom is the son of Mr. and Mrs. Kenneth Gerstenberg and grandson of Leonard Gerstenberg of Belton.

The maid of honor was the bride's sister Greta Marsh of Bridge City. Matron of Honor, the bride's sister Shannon Upton of Fort Worth. Bridesmaids were Helena Gerstenberg from LaVerne California; Olga Hernandez of Orange, Tx.; and Tammy Parsons of Beaumont.

The groom's brother Mark Gerstenberg from Salem, Oregon served as best man. Groomsmen were Don Fields from Fort Worth, Don Powers from Austin, Jim Echels from



Mr and Mrs K. Paul Gerstenberg

Austin, and Rob Shane from Beaumont.

The groom's neice was flower girl Joy Jenkins. S. J. Marsh the brides' nephew served as ring bearer. Ushers were Stephen Marsh, Jay Givens, Jeff Tabb and James Howton.

Providing music was organist Keith Albright from

New York City; pianist Rita Byerly from Beaumont; soloist Jim Echels of Austin, Eddie Byerly of Beaumont, Olga Hernandez of Orange.

The bride wore a gown with an elegant "V" neckline gown with stunning handbeaded and sequined, long tapered sleeves. The elongated fit-

ted bodice sparkled with sequines and pearls. Three small bows attached at the top of a trumpet skirt.

The chapel length train is accented with delicate, scalloped, hand-beaded lace throughout the hemline of the gown. The headpiece was a band of pearls and sequins with a sparkle illusion fingertip veil.

Attendants wore hunter green, silk Shantung tea length dresses and matching accessories. They carried bouquets of pale pink and white roses.

The bride and groom traveled to Florida and Washington D.C. for the wedding trip. They now reside in Fort Worth.

Christie, a graduate of Beaumont's Lamar University with a B.S. in Education, is now a second grade teacher at Castleberry I.S.D. in Fort Worth.

K. Paul, also a graduate of Lamar University is employed with Texas College of Osteopathic Medicine in Fort Worth.

## Monday Club to meet Nov. 2

The Monday Club will meet 2 p.m. Nov. 2 at the Salado United Methodist Church.

The devotional will be given by Joan Hoffman. The program by Thelma Griffith will be "Traveling in Norway".

Hostesses will be Joan Hoffman and Jerry Goodman. All ladies are invited to attend.

## Boosters to follow Eagles Oct. 30

The Salado Athletic Booster Club has scheduled a sendoff and caravan to the Thorndale game.

Plan to join them 4-4:30 p.m. in the Salado High School Parking area. Be ready to decorate the Athletic bus and your car. Streamers and polish will be provided. Upon arrival in Thorndale you are invited to join the gathering of Eagles in the Thorndale Stadium parking area until game time. (Pack a picnic.)

For more information contact Ben Renfro, President at 947-9530.

## Friends feeding friends food drive success!!

The third annual Friends Feeding Friends was a tremendous success according to coordinator Bill Bartlett. There was enough food gathered to help feed twelve families as well as stock the food pantries.

The success can be attributed to the caring people in Salado. The Salado FFA contributed a great deal of time and work. They conducted a contest between the classes to see which class could donate the most food. The third grade won in the elementary and the 8th grade won at the high school. Dairy Queen provided a free ice cream to every member of the class.

The Salado FFA and their instructor Brit Owen were responsible for delivering the food to the families and to the food pantry.

In support of the food drive, Village Foods IGA donated food and space for the drop location. Salado Lions Club supported the food drive by donating non-perishable items.

The Temple/Belton/Salado Board of Realtors and KCEN TV6 express thanks for the donations made by individuals and organizations. If any family needs food, please contact the local churches.

### SELLING YOUR HOUSE

#### How Much Is It Really Worth?

The actual value of any piece of property is the amount a willing buyer will pay for it within a reasonable period

How does one determine that value and thus set the asking price?

The size of the house and special features form the foundation, but that's not all. The real estate professional follows the market on a daily basis, checking comparable sales and watching economic trends and factors that enter into the price equation. Of course, the asking price usually includes a small cushion for negotiation.

There's a risk in just picking a number and seeing who'll buy. Set the price too low, and you cut into the return you should get. Set it too high, and the property will languish on the market.

Fact is, people who want to spend a lot of money expect to get a lot of house for it. And people who really want a more modest house in a more modest price range are frightened away by a high price and never get to see the modest property. The house sits unsold until it's "stale" on the market.

How much is your house worth? Ask the real estate experts at MILL CREEK REALTY, 200 Mill Creek Dr, Salado, TX (817) 947-8800.



### SCHENKEL ENTERPRISES

H.A. "Bud" Schenkel, CFP  
Certified Financial Planner

(Fee Only)

(817) 947-9364

#### Comprehensive Financial Planning

- Risk Management Planning (Insurance)
- Tax Planning and Tax Savings
- Investment Planning and Analysis
- Pension and Retirement Planning
- Estate Planning

Post Oak Center, Suite 1 Salado, TX 76571



#### The Issues:

The incumbent is running a private law practice when he should be serving as your County Attorney. Bell County pays for and deserves a full-time county attorney. There can be no special favors granted to a select few. Over 5,000 cases are backlogged in the county attorney office. Eliminating this will be a top priority. Hot checks must be handled expeditiously and supervised on a full-time basis.

#### The Man:

Rick Miller began his career in law enforcement in 1963 as a Dallas police officer. He went on to get his law degree from Baylor and also holds a masters degree in Public Administration from SMU. He has served as a police chief and managed a 3.5 million dollar yearly budget.

Years of trial experience and effective administration qualify Rick for the job of the Bell County Attorney. Isn't it time you get what you're paying for?

### New Retirement Plan Distribution Rules

If you participate in your employer's retirement plan, you should know about some new legislation that will affect how you choose to receive future distributions from the plan. The new rules are effective Jan. 1, 1993, and govern distributions from qualified retirement plans, such as profit sharing, money purchase 401 (K) and defined benefit plans, and tax-sheltered annuities (403 (B) plans). The changes do not apply to distributions you take from your IRA.

Whether you receive a distribution because of retirement, layoff or termination of the plan, the new law affects the number and types of choices you have with regard to your distribution.

You may now transfer your distribution to your IRA.

If you participate in a qualified plan, current law requires that any distributions you take from the plan be paid to you directly to avoid current taxation. You then have 60 days in which to roll the money over to an IRA or another qualified plan.

Under the new law, you can still choose to receive your funds directly. However, your employer will now be required to withhold 20% of your distribution (explained further below). In addition, your employer is now required to provide you with the option of ordering a transfer of your money directly from the company's plan to an IRA or your new employer's qualified plan, rather than receive the funds.

#### New Withholding Requirements

To encourage you to use the new direct transfer option, the new law imposes mandatory withholding of federal income tax, at a rate of 20%, from any distribution paid to you directly. This new provision is not a tax increase. The 20% withholding is a payment against the tax you will owe on the distribution, much in the same way that the taxes withheld from your salary



**Mike Miller**

represent a payment against your total income tax bill.

If you choose to receive your distribution, despite the automatic 20% withholding, you will still have 60 days after you receive the check to roll the balance over into your IRA. But beware of a potential pitfall. If you don't roll over the entire original distribution amount, the 20% that was withheld will be considered taxable, and if you're under age 59-1/2, potentially subject to the IRS 10% early withdrawal penalty. To avoid this additional taxation and penalty, you will have to come up with replacement funds from your savings or some other source to equal the 20% withheld.

#### Eligible Rollovers Liberalized

In addition, because the new law expands the types of distributions that are eligible for tax-free rollovers, you now have more options. For example, current law prohibits you from taking a distribution while you are still employed by the company that sponsors the plan. However, under the new law, if your employer will allow it, you no longer have to wait until you terminate your employment to roll over funds from your retirement to your IRA.

Many individuals find the rules surrounding their retirement plan distributions confusing. It's easy to see how the changes might add to this confusion. Contact your tax or financial consultant for more information on the new rules because the better you understand them, the better you'll be able to make the appropriate decisions for your retirement money.

**A.G. Edwards & Sons, Inc.**  
INVESTMENTS SINCE 1887  
3407 South 31st, Temple, or call 1-800-460-1504  
member SIPC

## Elementary honor rolls released

Salado ISD announces the Honor Roll for the First Six Weeks at Thomas Arnold Elementary:

### Third Grade All A's

Adria Raley, Lindsay Quirk, Stephanie Marley, John Kirk, Mario Guajardo, Megan Fleck, Whitney Brown, Sarah Moon, Frank Carlson, Echo Jacobsen Sam Silvers, Dillon Reichert, Candace Simpson, Misti Simonton, Nahtahna Sides, Matthew VonGoten, Jesse Jordan, Emily Bates, Linda Biesterveld, Tiffany Blair, Jeremy Grimm Aaron Gonzales, Andrew Hanson.

**A&B's** - Mancy Tsosie, Cindy Thompson, Megan Burson, Nathan Roberts, Craig Camp, Nicole Martinez, Matt Cawthon and Randi Rader.

### Fourth grade All A's

Hope Buchanan, Condyl Melton, Tessa Schreiner, Matthew Stowell, Rebecca Trost Becky Wilson, Stacy Blodgett, Gregory Dachs, Garlen Hennig, Jennifer Joiner, Ashley Kelley, Jon Teer, Sam Daniels, Lara Lee, Matt Nelson, Donny Pipes, Jennifer Puncard and Micki Rosanky.

**A&B's** - Amy Barbour, Bryce Bolick, James Butler, Cindy Lopez, Sheena Page, Paul Holloway, Ben Brooks, Sabrina Chaparala, Warren Hileman, Casandra Holton, Christine Urquiza, Jeremy Bradhurst, Joshua Matthews, Jonathan

McHaney, Brandon Newman, Jamie Powell and Cole Wolf.

### Fifth Grade All A's

Zachary Brown, Blake Cameron, Paige Teer, Lauren Quirk, Paul Lucas, Nick Long, Nichole Hill, Larry Whitt, Deann Vongonten, Sarah Ray, Kendall Anderson, Amber Claburn, Alicia Doyle, Matthew Fleck, Diedra Hodge, Sarah Holloway Nikole Jackson, and Veronica Quick.

**A&B's** - Elena Thomason, Brooke Simpson, Trey Hutton, Johathan Robbins and Colt Smith.

### Sixth grade: All A's

William Barbour, Sarah Buchanan, Franky Conlee, Adam Doyle, Wesley Friedrich, Anna Kate Mackie, Scott Marley, Michelle Tillman and Jennifer Tsosie.

**A&B's** - Sallie Edmondson, Laura Jiminez, Kyle Hood, Rory Oldham, Cadudia Aquilar, Cody Hill

and Jennifer Lenis.

### Sixth Grade All A's

Dustin Camp, Raina Curry, Crystal Edmondson, Sammantha Fuchs, Katie Moore, Jody Silver, Jimmy Thompson, Chrystal Whiteley, Laura Schatte, Rachel McGregor, Taylor Hutton, Hope Evans, Ryan Buckley Sommer Wilson.

**A&B's** - Brad Davidson, Shelly Dillion, Annika Garcia, Ryan Gillespie, Josh Lee, Chris Michna, Katie Punched, Latasha Sides, Nicole Whitacre, Mark Weddell, Alberta Uriquiza, Kristen Thompson, Fiora McRae, Stacy Krueger, Jeni Hanson, Shellie Grimm, Micah Drake and Sarah Wiley.

#### CORRECTION

The name of a student was inadvertently left off of the honor rolls last week. Eight grader Barbie Drake was a member of the A-B Honor Roll for the first six weeks.

## Merchants, residents should order luminarias in Nov.

Luminarias are being sold in lots this year. Each lot includes 10 white bags, 20 candles and sand for \$3.

Example: 9 lots equals 90 white bags and 180 candles at a cost of only \$27.

Checks should be made payable to Salado Merchants Committee. The form should be filled out and returned with pay-

ment by Nov. 16. to Century 21 Bill Bartlett, Attn: Luminating Salado, P.O.

Box 183, Salado, TX 76571. If you have any questions call Melanie at 947-5050.

You will be able to pick up your bags and candles at Village Foods Nov. 30-Dec. 4. Sand will be in the Village Foods parking lot.

#### LUMINARIA ORDER FORM

Business name \_\_\_\_\_

Phone \_\_\_\_\_

Number of Lots: \_\_\_\_\_

How many unclaimed area lots can you donate? \_\_\_\_\_ plus \_\_\_\_\_

equals \_\_\_\_\_

X \$3

Total of check \_\_\_\_\_

Do you need help setting up your luminarias? \_\_\_\_\_

Enclose payment and mail to: Century 21 Bill Bartlett Attn: Luminating Salado P.O. Box 183, Salado, TX 76571

\*\*\*

He who knows nothing is nearer the truth than he whose mind is filled with falsehoods and errors.

—Thomas Jefferson



**BREAKFAST ALL DAY..**

*Plus lunch specials*

A clean, fun, friendly place to eat

**To Go Line 947-8001**

Inside S + W Chevron Food Mart

IH-35 South, Exit 284 Salado

**OPEN 6 a.m.-2 p.m.**

**Wenesday through Sunday**

**Shopping**

- 1. Salado Galleries
- 2. Salado Pottery
- 3. Gregory's
- 4. Salado Country Antiques
- 5. Traditions
- 6. Sweet Nut Things
- 7. Peddler's Alley
- 8. The Dusty Rose
- 9. JLA Uniques
- 10. The Royal Emporium
- 11. Grace Jones
  
- 13. Creekside of Salado
- 14. Herbs n' Such
- 15. The Christmas Shop
- 16. Susan Marie's Boutique
- 17. Lady Asher Shoes
- 18. Strawberry Patch
- 19. Unique Showings
- 20. Antique Jewelry & Collectibles
- 21. Salado Beauty Spa
- 22. Darwin Britt Furniture
- 23. Ticklish
- 24. Carolanne's Secret Gardens
- 25. The Allen Collection
- 26. Sir Wigglesworth
- 27. Seasons of Salado
- 28. Briar Patch of Salado & Bill Shaw's Gallery
  
- 30. Gospel Gifts
- 31. Recollections
- 32. Tames Gallery & Framing
- 33. Fletcher's Books & Antiques

- 35. Mountain Mary's
- 36. Old Mill Antiques

**Dining & Lodging**

- A. Stagecoach Inn
- B. Inn on the Creek
- C. The Rose Mansion
- D. The Tyler House Restaurant & Club
- E. The Inn at Salado
- F. Browning's Cottage Cafe
- G. Mill Creek Country Club
- H. Cowboy's Barbeque
- I. Sunrise Kitchen & S+W Food Mart
- J. Dairy Queen
- K. Country Place Bed & Breakfast Inn

**Services**

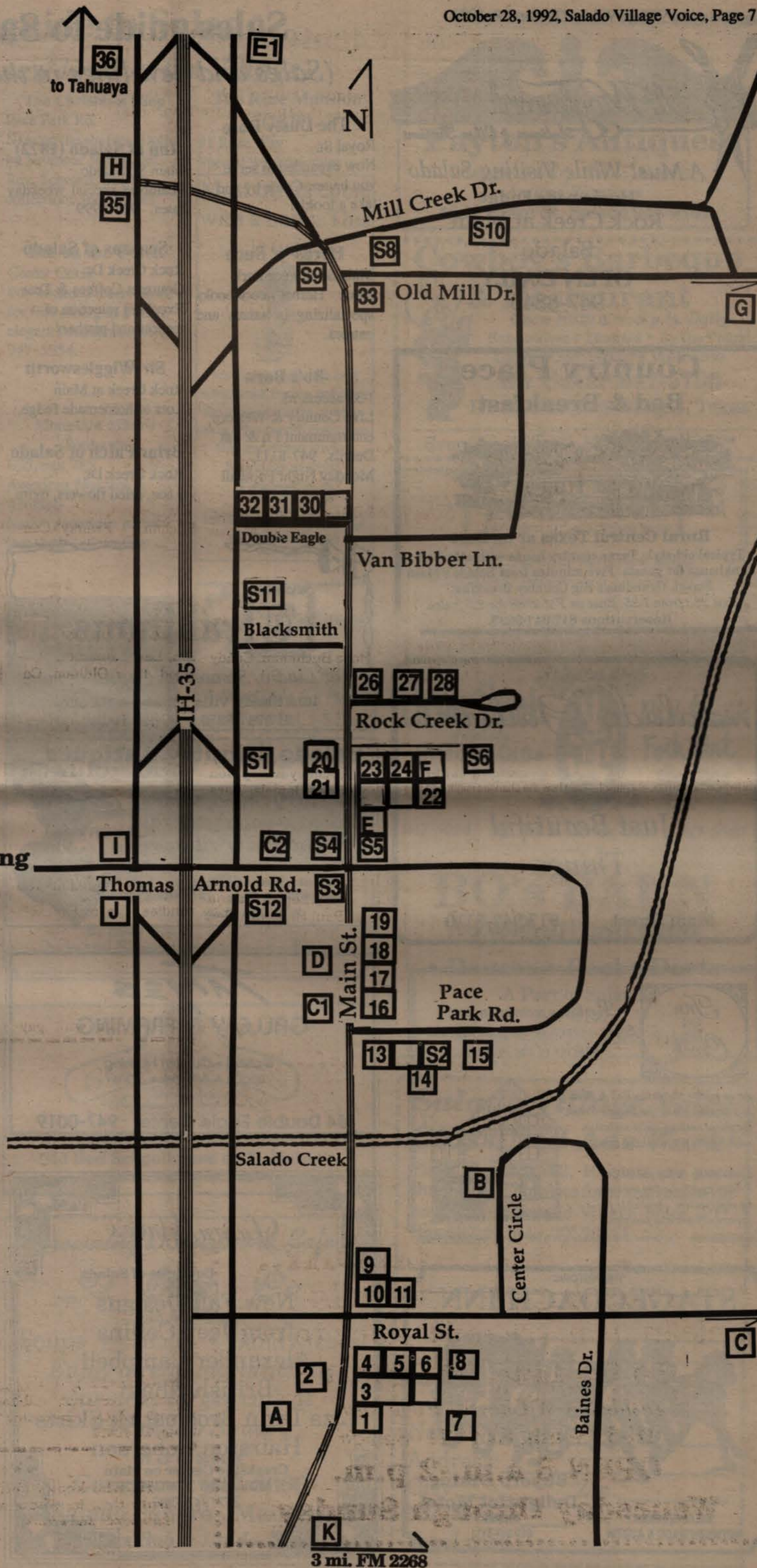
- S1. Salado Village Voice
- S2. Isdale Chiropractic
- S3. Salado National Bank
- S4. Family Dentistry
- S5. Century 21 Bill
- S6. Properties by Larry
- S8. Village Foods IGA
- S9. Bluebonnet Savings
- S10. Mill Creek Realty
- S11. Harper-Talasek Funeral Home
- S12. Salado Exxon

**Churches**

- C1. First Baptist Church
- C2. United Methodist
- C3. Church of Christ
- C4. St. Stephens Catholic

**Entertainment**

- E1. Bo's Barn





**Sir Wigglesworth**  
*Antiques & Other Passions*

**A Must While Visiting Salado**  
Homemade Fudge  
Rock Creek at Main  
Salado  
**OPEN DAILY**  
947-8846

**Country Place  
Bed & Breakfast**



**Rural Central Texas at its Best**  
Typical old-style Texas country house with attached bunkhouse for guests. Five minutes from Salado's Main Street. Grandma's Big Country Breakfast  
Exit 283 from I-35. East on FM 2268 for 2.5 miles.  
Reservations 817/947-9683

*Salado Galleries*

*Just Beautiful Things*

Main Street 817/947-5110



*Re-live a moment in time.  
Enjoy a touch of the past with the luxuries of the present.*

An exquisite Victorian Bed & Breakfast Inn nestled along the Salado Creek, for those seeking quiet seclusion with highly personalized service.



Fine dining to the public on Friday and Saturday evenings by reservation. Available for private affairs and functions.

On Center Circle, Salado (817) 947-5554

THE HISTORIC  
**STAGECOACH INN**



**Superb Dining  
Delightful Motel**

SALADO, TEXAS  
BETWEEN WACO & AUSTIN

PHONE  
817-947-5111

# Sales guide to Salado

*(Sales and new lines in the Village)*

**The Dusty Rose**  
Royal St.  
Now expanded to serve you better. Come by and take a look!!!

**Inn at Salado (1872)**  
Main St. Salado  
Featuring special weekday rates. 947-5999

**Gospel Gifts**  
Double Eagle Center  
Charles Dickens, Nutcracker, Showman teapots, cookie jars. Fontanini Holy Family ornaments, Irene Spencer & Ivory cat ornaments. Wide selection of Christmas bags.

**Herbs 'n' Such**  
Main St. at Pace Park  
New: Herbal cookbooks specializing in salads and entrees.

**Seasons of Salado**  
Rock Creek Dr.  
Gourmet Coffees & Teas  
Excellent selection of teapots and pitchers

**Bo's Barn**  
I-35 access rd.  
Live Country & Western entertainment Fri & Sat  
Details, 947-8111.  
Monday Night Football

**Sir Wigglesworth**  
Rock Creek at Main  
Lots of homemade fudge.

**Peddler's Alley**  
Off Main St. & Royal  
Don't miss our 11 shops behind Museum

**Briar Patch of Salado**  
Rock Creek Dr.  
Lace, dried flowers, more

**The Tyler House**  
Main St.  
Closed temporarily for renovations



**Traditions**  
in Historic Salado  
For Lladro, Swarovski Crystal & more  
101A Shady Villa Main St. Salado  
817/947-8216 Open Daily

**The Dusty Rose**  
"Home of  
Santas Unlimited"  
Large selection of hand-painted Santas by Karen Lee  
Open Daily  
110 Royal St.  
947-9215

**Salado Country Antiques**

We carry Snow Babies  
United Designs Santas  
& The Snow Village



Antiques • Silver • China • Linen • Gifts  
Shady Villa on Main (817) 947-8363  
Open Daily

**GREGORY'S**  
*An American Crafts Gallery*

2 MAIN ST. ■ BOX 588  
SALADO, TEXAS 76571  
(817) 947-5703

**TIMES**  
GALLERY & FRAMING

Gallery • Custom Framing  
Logos • Artwork • Signs

#4 Double Eagle Center 947-0019

**Susan Marie's**  
Boutique of Salado

New Fall Designs  
from Jeep Collins  
Alexander Campbell  
British Khaki  
Liza Lynn Broomstick Skirts  
Hairston Roberson

Creekside Center on Main  
M-Sat 10-5 VMC/AEX  
817/947-5239

**Sweet Nut Things**

• Candies • Nuts  
• Trail Mixes • Gift Tins  
• Sugar Free Candies  
Much more than just a candy store

We mail anywhere  
1-800-654-7301

Shady Villa  
Main St. Salado  
817-947-8088  
Open Daily



# Sales guide to Salado

(Sales and new lines in the Village)

## Gregory's

Shady Villa  
Featuring handcrafted jewelry by Tabra & other distinguished American artists.

## Creekside of Salado

Main St. at the Creek  
Christmas Shirts,  
Christmas Baskets,  
Christmas Gifts.

## Recollections

Double Eagle Center  
Wide range of American antiques and collectibles. Furniture, Flow Blue, gifts and hand-painted crafts. Open 10 a.m. everyday.

**Deadline for News & Ad copy is Friday**

## Coming Soon

The Tyler House



Main St. Salado

## The Christmas Shop

Pace Park Rd.  
New on the shelves: Dolls by Seymour Mann, Del Rey, Schmidt, She Ne' collections and Victoria

## Inn on the Creek

Center Circle  
For weekend reservations for fine dining in a quiet, elegant atmosphere, call 947-5554.

## Mountain Mary's Tonkawa

I-35, exit 285  
American Musuem & Artifacts  
Native American herbal teas, bath and incense

## The Rose Mansion (1870)

#1 Rose Way  
Special weekday rates  
Most offers come with a hook. This

is ours.



We simply offer the best selection of frames and mats for prints, pictures or keepsakes. Plus superb craftsmanship and expert advice. No strings attached.

**Tames**  
Gallery & Framing  
#4 Double Eagle  
947-0019

## Fletcher's Books & Antiques

North Main Street  
947-5414  
OPEN DAILY

## Unique Showings

"A Good Little Gift Place"  
10-5 Tues-Sat, 1-5 Sun  
947-8626  
Creekside Center

## ROYAL EMPORIUM of SALADO

Main and Royal  
817/947-5718  
Doris and Robert Denman

**OPEN**  
everyday

- Antiques
- Art
- Interiors
- Gifts

## GOSPEL GIFTS

In Double Eagle Center across from Old Red Schoolhouse on N. Main St. Open 7 days including Sunday mornings.

## Browning's Courtyard Cafe



Soups • Salads • Sandwiches  
Enjoy a relaxing lunch in our new, larger cafe at #4 Salado Square

**We Cater**  
Carry-out 947-8566  
Salado Square Main St.  
Owners Bob & Linda Little



## Payton's Antiques

Vintage Jewelry, Estate Jewelry,  
Antique Furniture  
#6 N. Main St. Salado 947-9161

## Cowboy's Barbeque & Restaurant



Open 10:30 a.m.-8 p.m. Daily  
Sandwiches • Dinners • By the Pound  
Carry Out Orders Welcome  
**We Cater 947-5700**

IH-35, Exit 285 Salado, Texas

Everyday Special: Family Pack \$11<sup>95</sup>

## DARWIN BRIT

FURNITURE ★ ACCESSORIES

We build unique furniture using traditional joinery and antique wood from vintage Texas structures.

Salado Square Main St. 817/947-5575

## Briar Patch of Salado

Interior Gifts  
Dried Flowers



Bill Shaw's Folk Art Gallery

947-5024 #3 Rock Creek Dr. 947-5567

## BO's BARN

Dancehall and Club

• Dances • Pool • Darts

A Part of Salado  
947-8111

I-35 East Access Rd., North Salado

## Salado Village Voice Classified Ads Work!

First 10 words, \$2; 10 cents per word thereafter. Complete form and mail with payment to Salado Village Voice, P.O. Box 587, Salado, TX 76571.

\_\_\_\_\_  
\_\_\_\_\_  
\_\_\_\_\_  
\_\_\_\_\_  
\_\_\_\_\_  
Name: \_\_\_\_\_  
Address: \_\_\_\_\_  
City: \_\_\_\_\_ Zip: \_\_\_\_\_  
No. words \_\_\_\_\_ No. runs \_\_\_\_\_  
Total cost \_\_\_\_\_



Just Beautiful Pots

## SALADO POTTERY

Main St. next to Stagecoach Inn Restaurant



## Peddler's Alley

5,000 sq. ft. of antiques, collectables & gift items in a unique setting

Located off Royal St. behind Central Texas Area Museum

Tues.-Sat. 10-5  
Sunday 1-5



## THE Christmas Shop

Elegant designer ornaments, decorations, collectibles & gifts

Open 10am-5pm in the Green House  
817/947-5561 Pace Park Dr. Salado on the Creek

*Grace Jones*  
OF SALADO

One Royal Street 947-5555 947-5330

### Christmas Watches Jewelry & Accessories



### Creekside of Salado

watches, jewelry, accessories & antiques  
N. Main St. at the Creek 947-9000 George & Becky McAulay

## Salado, Bell County Driving Tape tours updated for Commission

The Salado Driving Tape Tour, sponsored by the Bell County Historical Commission has recently been updated after a successful 3 year run for the original Salado Tour. The new tapes with their maps are available at the motel office of Stagecoach Inn and at Salado Galleries, locally as well as at the Tape Tour locations in Belton and Temple.

The Belton Chamber of Commerce, the Bell

County Museum and the Railroad and Pioneer Museum. The tapes may be rented for a fee of \$5 plus a \$5 deposit which will be returned upon delivery of the tape to any of the rental locations. There are also tape players available for loan with a deposit of \$20 for those who have no tape player in their vehicle.

The Salado Driving Tape Tour was written by Pat Barton of Salado, a

member of the Bell County Historical Commission and the new tape was recorded by Dave Owens of KCEN Radio, Temple. The maps were designed by Tim Brown, the new signs were done by Lonnie Edwards and were installed at the 23 stops on the Tour by John Barton all of Salado.

Driving Tape Tours of Belton and Temple are also available at all of the above locations.

## Republican Women meet Nov. 5

Members of the Chisholm Trail Republican Women's Organization will meet at the Stagecoach Inn Dining Room in Salado 11:30 a.m., Nov. 5.

This will be the annual meeting at which officers for 1992 will be elected. A slate of candidates will be

presented by the nominations committee and nominations will be taken from the floor. Serving on this committee are Thelma Fletcher, Alma Hodes, Jimmie Vernon and Jaunita Hardin.

Visitors and new members are welcome.

Men are welcome as associate members. Members of other Republican Women's groups may join as dual members but may vote and hold office in only one group.

Members of the Chisholm Trail RWO have taken active roles in the political campaigns, in voter registrations, in community service projects and in volunteerism.

Membership dues including renewals will be collected prior to Dec. 31. Dues are \$15 annually and this includes membership in Texas Federation of Republican Women (TFRW) and National Federation of Republican women (NFRW).

## Chamber Auxiliary to meet

The Salado Chamber of Commerce Auxiliary will meet 10 a.m. Nov. 12 at the Halley House for the Auxiliary President's coffee hosted by the 1992 officers.

There will be a brief

business meeting and election of the 1993 officers. Details for the December 7 Grace Jones Style Show will be revealed.

Style Show tickets are now on sale.

## Seasons of Salado

Gourmet Coffee & Tea

Excellent selection of teapots & pitchers



#2 Rock Creek

Open Daily

947-8250

## Salado's Historic Bed & Breakfast Inns



### The Rose Mansion (1870)

One Rose Way, Salado, TX 76571  
817/947-5999



### The Inn at Salado (1872)

Main St. at Pace Park, Salado, TX 76571  
817/947-8200

### Herbs 'n Such

• Gifts •  
• Pottery • Herbs

Herbal vinegars, seasoning for pasta, chicken  
At the Gazebo  
817-947-0015

Deadline for News & Advertising is Fridays

## CMAT honors 2 for support

The Country Music Association of Texas presented a special "Plaque of Appreciation" to Jerry D. Ferrel of Ferrel Distributing and Jim Schwartz of Hilliard Distributing for their support of country

music in the Central Texas area.

Miss Country Music Texas, Lisa Powell of Austin made the presentation at the C.M.A.T. headquarters in Salado on Oct. 10.

The C.M.A.T. is one of the largest state music organizations in the country with over 3,000 members and is active in promoting country music talent statewide.

## Elderhostel plans 9 sessions here

This winter the Stagecoach Inn, in conjunction with the University of Texas at Austin, will be offering nine Elderhostel programs September through March. For anyone over 60 years of age, Elderhostel has become a tremendously popular way to combine travel and learning in a surprisingly affordable format last year alone, over 215,000 people participated at more than 1800 program sites in the U.S., Canada and 42 countries overseas.

The Stagecoach Inn has already conducted 3 Elderhostel sessions last winter and, according to Wayne Schumacher who is coordinating the programs in Salado, there will be nine more Elderhostel programs September-March.

Elderhostel is nothing new to Schumacher who

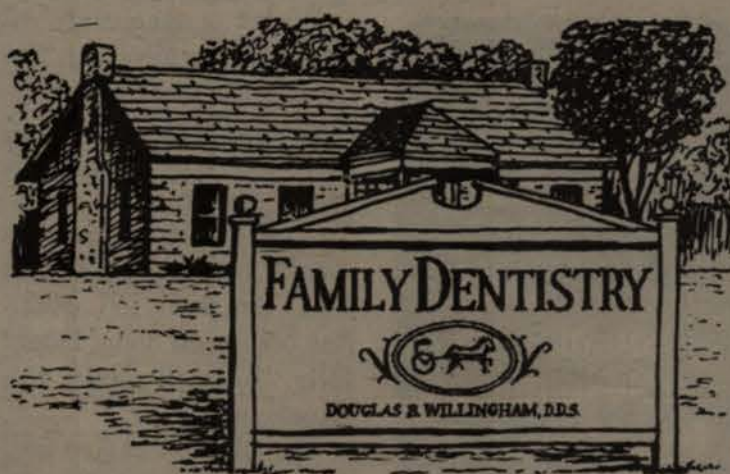
has been running Elderhostel programs in Oregon since 1980 and received special recognition from the president of Elderhostel for creating the largest and most successful Elderhostel program in the United States. "Elderhostel is a tremendously rewarding program," Schumacher said, "for all who get involved with it. Everyone benefits: the Elderhostelers themselves, the faculty who teach the classes, the staff who put the programs together, and the communities where Elderhostel take place."

So what is Elderhostel? It is a non-profit, educational organization which started in 1975 to serve older adults aged 60 and above. Elderhostel programs, which usually last six days, involve daily lectures, classes and field

trips which focus on three academic courses of study, usually in the field of liberal arts and sciences. There is no homework, no exams and no grades. The learning is purely for enjoyment and personal enlightenment.

Subjects planned for this fall and winter in Salado will focus on History, geology, literature, music, birding, natural history, wellness and wildflowers. Schumacher has reserved space in each Stagecoach Inn Elderhostel program for up to five local residents to participate as Elderhostel "commuters."

To receive the Elderhostel catalog four times a year, write to Elderhostel, P.O. Box 1959, Wakefield, MA 01880-5959. For more information about Elderhostel at Stagecoach Inn, contact Wayne Schumacher 947-5111 or drop by Stagecoach Inn registration desk for a full listing of course being offered this year.



Main St. and Thomas Arnold By appointment 947-5242 Salado

### A. MICHELLE MAY

Attorney and Counselor At Law

208 E. Central Ave.  
Suite 104  
P.O. Box 1797  
Belton, TX 76513

Bus: 817-939-2060  
FAX: 817-939-2060  
Res: 817-939-5118

### HOLLAND PACKAGE STORE

Beer • Liquor • Wine • Case Discounts  
Hwy 95, next to Holland Food Mart  
Holland, Texas 657-2428

### Kentucky Tavern

1.75 L 80 proof **\$11<sup>49</sup>**  
Boone's Farm Wine  
750 mL **2 for \$4<sup>99</sup>**

Specials good October 28-November 3, 1992

Local Distributor's Lic# LP19260 "We sell to Clubs"

### OLD MILL ANTIQUES

Old Railroad Mill  
Full of  
Antiques & Collectibles  
1-35 N. 3 miles  
Exit 289A  
Sat. & Sun. 10 - 5  
817-947-5531 or  
817-947-9959  
**\*WE BUY DAILY\***

### WEDDING INVITATIONS



Mon-Fri  
8:30-5:30

128 North Main • 939-2017

**BELTON PRINTING**  
Belton, Texas

### ANTIQUE

### The Heritage Antique Show

Last Weekend of October  
October 31 - November 1, 1992

San Gabriel Park  
GEORGETOWN  
TEXAS

27 Quality Dealers  
Luncheon Served

Celebrating 10 Years

Information:  
(512) 863-5598

Oh My God!

4 Years

I Can't Believe It!

Happy Anniversary



Isdale Chiropractic of Salado

101-C Main • P.O. Box 531 • Salado, Texas 76571  
(817) 947-0006

Tuesday & Thursday, 9 A.M. to 1 P.M.

Dr. Sid Isdale

Dr. Colleen Isdale

Killeen — (817) 699-4004 • Harker Heights — (817) 699-3303  
Temple — (817) 778-0024

### ATTENTION

Individuals, Self Employed & Small Business

Tired of Taking a  
**BEATING** on your  
Health Insurance

**WE HAVE THE CURE!**

Introducing a 100% Health Plan at Economical Rates!

**Phil Light**

**1-800-950-3271**

October 28, 1992

**Letter to the editor: Kudos given to two water groups serving Salado**

**Are you paying too much for too little? You may be able to make real savings on**

- AUTO
- FIRE
- LIFE
- COMMERCIAL insurance.

**Farmers Insurance Group of Companies**  
 Don A. Svadlenak  
 102 Travis St. Holland  
 657-2621

**Once Blessed: the Salado Water Supply Corporation**

Water is absolutely essential to our survival. The Salado Water Supply Corporation (SWSC) has met; our need for "cool, clear, pure" water since 1965. Yet we are unaware of a single published "Thank You" for their job which has been well done. Hopefully, this will rectify the situation!

The SWSC has five producing wells, each monitored daily to assure correct chlorination. Water samples are taken from random taps each month and are sent to the State Laboratories to be tested for bacterial contamination. A "booster" station south of Salado assists two water towers in maintaining adequate pressure in our water distribution system. The entire system is

now mapped and charted for location of all lines, hydrants, etc. The SWSC projects our future water needs. Salado's share of water in Stillhouse Lake is being reserved to meet these requirements. The SWSC believes the expense of building a water purification plant to process this water will be prohibitive. It should be more cost-effective to have the larger central Texas Water Supply Corporation treat this water for us.

Current members of our SWSC are President Raymond McKee, vice-president Toby Preston, Treasurer Donald J. Mackie, secretary James E. Tuck, Fletcher Rhodes, Brad Phair, Johnny Butler, Floyd Lee, and Danny Grimm. Dozens of others have served since 1965. We owe these an overdue credit, a vote of thanks and

a pat on the back --Tell them the next time you see them!!

**Twice Blessed: The Salado Creek Preservation Committee of the Salado Historical Society**

This (SCPC) Committee, reactivated in March of 1991, seeks not only to preserve historical information but also to establish and maintain a record of water quality for our village. Its 25 volunteers work closely with the Texas Water Commission, regularly testing water purity at 5 sites along the creek --Summer's Mill, Chisholm Trail, the Sirena area, Patterson's Crossing, and the Stagecoach dam. In effect this extends and complements the work of the SWSC. When necessary, the SCP Creek group addresses corrective and educative actions.

1. They requested site cleanup by the Texas Water Commission Underground Storage Tank Division at the former Texaco station on IH-35. Five leaking tanks were removed and this area is still monitored for contamination.

2. At their suggestion, Representative Dianne Delisi passed legislation prohibiting further discharge of wastewater into Salado Creek until April 2000.

3. A leaking pipe from a village water well was

reported to the SWSC for their prompt repair.

4. Currently, Salado school students are observing and learning to assist with this environmental project.

5. Routine monitoring of phosphates, nitrates and various other potential pollutants was begun in July of 1992.

The Brazos River Authority is responsible for conservation, quality and service of a large area in Central Texas. Much of their work is educational. The Authority recently honored Salado SCPC by filming an audiovisual tape of their work to use for teaching other groups. Our SCPC is to be congratulated for this honor and for their diligent work since 1991. The principals involved in this group have been Pat Merrill, Karen Kinnison, Martha Harper, Sue Whistler, Ted Edens, Gary Askins -- and others too numerous to mention. **TELL THESE DEDICATED WOMEN AND MEN HOW WE APPRECIATE THEIR EFFORTS, TOO!**

The goals and functions of these two fine organizations are similar, each complementing the other. Their comfortable, working relationship should benefit each group and, ultimately all of us.

Cordially,  
 Kay & Wayne Baden

STATEMENT OF CONDITION

Consolidating domestic subsidiaries of the SALADO NATIONAL BANK OF SALADO in the state of Texas, at the close of business on September 30, 1992, published in response to call made by Comptroller of the Currency, under Title 12, United States Code, Section 161. Charter Number 16774, Comptroller of the Currency, SOUTHWESTERN District.

Statement of Resources and Liabilities Dollar Amounts in Thousands

<b>ASSETS</b>	
Cash and balances due from depository institutions:	
Noninterest-bearing balances and currency and coin	771
Interest-bearing balances	1,181
Securities	5,041
Federal funds sold	275
Securities purchased under agreements to resell	0
Loans and lease financing receivables:	
Loans and leases, net of unearned income	9,131
LESS: Allowance for loan and lease losses	232
LESS: Allocated transfer risk reserve	0
Loans and leases, net of unearned income, allowance, and reserve	8,899
Assets held in trading accounts	0
Prepays and fixed assets (including capitalized leases)	260
Other real estate owned	449
Investments in unconsolidated subsidiaries and associated companies	0
Customers' liability to this bank on acceptances outstanding	0
Intangible assets	0
Other assets	160
Total assets	17,036
Losses deferred pursuant to 12 U.S.C. 1823(j)	0
Total assets and losses deferred pursuant to 12 U.S.C. 1823(j)	17,036
<b>LIABILITIES</b>	
Deposits:	
In domestic offices	15,710
Noninterest-bearing	2,466
Interest-bearing	13,244
Federal funds purchased	0
Securities sold under agreements to repurchase	0
Demand notes issued to the U.S. Treasury	0
Other borrowed money	0
Mortgage indebtedness and obligations under capitalized leases	0
Bank's liability on acceptances executed and outstanding	0
Subordinated notes and debentures	0
Other liabilities	70
Total liabilities	15,780
Limited-life preferred stock and related surplus	0
<b>EQUITY CAPITAL</b>	
Perpetual preferred stock and related surplus	0
Common stock	375
Surplus	375
Undivided profits and capital reserves	506
LESS: Net unrealized loss on marketable equity securities	0
Total equity capital	1,256
Losses deferred pursuant to 12 U.S.C. 1823(j)	0
Total equity capital and losses deferred pursuant to 12 U.S.C. 1823(j)	1,256
Total liabilities, limited-life preferred stock, equity capital, and losses deferred pursuant to 12 U.S.C. 1823(j)	17,036

We, the undersigned directors, attest to the correctness of this statement of resources and liabilities. We declare that it has been examined by us, and to the best of our knowledge and belief has been prepared in conformance with the instructions and is true and correct.

I, LILA A. KNAUTH  
 VICE PRESIDENT/CASHIER  
 of the above-named bank do hereby declare that this Report of Condition is true and correct to the best of my knowledge and belief.

*John H. Williams*  
 JOHN WILLIAMS  
 President

*Lila A. Knauth*  
 Lila A. Knauth  
 Vice President/Cashier

OCTOBER 21, 1992  
 Date

**CLASSIC CAFE**

126 N. East St. Downtown Belton 939-3995

**NEW** You're invited come by and try some of our new menu items. Rainbow trout, Shish-kabobs, Stuffed Mushroom Caps and many other items.

Open lunch & dinner, 7 days

**COUPON JUST A BUCK COUPON**

BUY ANY ENTREE AT REGULAR PRICE GET A SECOND FOR ONLY \$ 1.00.

EXPIRES 11/30/92; DINE IN ONLY, NOT VALID W/ OTHER OFFERS

**Oil Change**

Up to 5 qts. any grade except 20-50 and diesel

**\$16<sup>95</sup> + TAX**

**\$10 off Hand Wash & Wax**

\$5 extra for Armprall interior & exterior Trucks & Vans Extra By App't Only

**SALADO EXXON**

817/947-5512 I-35 at Thomas Arnold

# CHURCH

*news of the institutions and people of our village*

## Townsend's 50th anniversary

Kenneth and Ruby Townsend of Salado will celebrate their 50th wedding anniversary 2:30-4:30 p.m. Nov. 1, with a reception given by their children and grandson at the Salado First Baptist Church Fellowship Hall.

Serving as hosts are Judy and Steve Fellers of Salado and Kent, Geane and Tanner Townsend of Gardner, KS.

Townsend and the former Ruby Alexander were married Nov. 3, 1942 in the Prairie Dell Community at the home of Mr. and Mrs. Bill Bridges.

He retired in 1985 from the USDA, Agriculture Stabilization Conservation Service with 29 years service. Mrs. Townsend retired in 1985 from the USDA, Soil Conservation Service with 30 years of service.

Friends and relatives are invited to join them in this joyous celebration.



*Kenneth and Ruby Townsend will celebrate their 50th wedding anniversary with a reception 2:30-4:30 p.m. Nov. 1 at the Salado First Baptist Church Fellowship Hall.*

### Wesley Fest #13 is just around corner at retirement home in Georgetown

Wesley Fest #13 is just around the corner! More than 75 Central Texas Artisans will be displaying their wares on the lawn on the Wesleyan Retirement Home at the corner of University Ave. (Hwy 29 East) and Church St. in Georgetown, 10 a.m.-5 p.m. Nov. 7.

There will be food and entertainment throughout the day. This event is sponsored by the Volunteers of the Wesleyan Retirement and Nursing Homes and the proceeds will be used for equipment and furnishings for the homes. There is no admission charge.

\*\*\*  
Knowledge is of two kinds. We know a subject ourselves, or we know where we can get information upon it.  
—Samuel Johnson

LIFE  
AUTO  
HOME



**David Glasscock**  
Living in & serving Salado

**1-800-974-0005**  
**817-947-5566**

The church page is brought to you in part by these businesses:

**Salado National Bank**  
Main St. & Thomas Arnold  
947-5852 939-7533



The newest skilled nursing facility of House Cross Associates in Harker Heights

- Competitive daily flat rates
- Private & semi-private accommodations
- Specializing with only certified Alzheimer's Wing in Central Texas

For more information call Bonnie Smith at ... 699-5051

*Helen E. Zagona*

Attorney in the General Practice of Law

For an appointment call  
**817-947-8170**

P.O. Box 557, Salado, TX 76571




**Harper-Talasek**  
FUNERAL HOME  
I-35 & Blacksmith Rd.  
Salado • 947-5511

Also

9th at Barton Temple - 773-4564      506 N. 38th St. Killeen - 699-8200

## Attend the Weekly Church Service of Your Choice



**SALADO UNITED METHODIST CHURCH**

**FALL SCHEDULE**

Early Service 9 a.m.  
Sunday School 10 a.m.  
Worship Service 11 a.m.  
Everyone is Welcome  
Information 817/947-5482

**FIRST BAPTIST CHURCH OF SALADO SUNDAY**

Bible Study 9:40 a.m.  
Worship 8:30 & 10:50  
Evening 7 p.m.  
Youth Primetime 5 p.m.

**WEDNESDAY**

Family Supper 5:45 pm  
Prayer Service 6:30 pm  
3rd Mon: ESP  
1st Fri: Parents Night Out  
Main St. at the Creek  
947-5465

---

**St. Stephens Catholic Church**

5:30 p.m. Saturday Eucharist

8:30 a.m. Sunday Eucharist

11 a.m. Sunday Mass

On Holland Rd. south of Salado  
**947-8037**

**SALADO CHURCH OF CHRIST**

*Sunday*

Bible Class 9 a.m.  
Regular worship 10 a.m.  
Evening worship 6 p.m.


*Wednesday*

Bible Classes 7:30 p.m. (all ages)

IH-35 Access at Blacksmith Rd.  
**947-5241**

**MINDY**

Happy Sweet 16  
We Love You,  
Mom and Dad



**COME GREET GERRY!**

You and your family are invited to join us in welcoming our new President Gerry Gamble, his wife Patti and their children Julie and Michael to your bank and our village.

Tuesday, November 3  
or  
Tuesday, November 10  
5:30 - 7:30 p.m.

**Come & Go Reception**

**SALADO ELECTRICAL SERVICE COMPANY**  
New Construction Remodels Repairs

**Electrical Work:**  
New construction, remodel, or repair work.  
Call **947-5579**  
Salado Electric Company

**HODGES**  
Heating-Air Conditioning Appliance & Refrigeration Repair Commercial-Residential  
**939-6157**  
Reasonable Rates

**SALE!**  
(Lay-Away or Financing Available)  
Rectangular, Square & Round Trampolines

**WE SHIP ANYWHERE!**  
**SEWELL'S**  
100 S. Greer  
Pittsburg, TX  
Call 903/856-6501

**SALADO PLUMBING**  
"We are Ready!"  
Repairs & new home construction  
**947-5800**

*Experienced Wallpaper Hanger Wants Work.*  
Call **Karen**  
**947-5700**

**3R** Peterek's Country Meats & Czech Country Sausage  
ELMER KING RD. P.O. BOX 1353  
BELTON, TEXAS 76513  
(817) 939-8555  
CHOICE BEEF HALVES & QUARTERS  
DEER PROCESSING • REAL BEEF JERKY  
BARBECUE CATERING  
10% OFF Smoked meats with this ad

*An ad this size can cost as little as \$5 per week.*  
**947-5321**

**TUPPERWARE**  
EARN Holiday Money  
Sales Opportunity.  
No Cash Outlay!  
**1-800-229-6899**

**Invitation to Bid**  
Don E. Legge, Architect, will receive proposals from suppliers and subcontractors for labor and/or materials for the Renovations and Additions to the Old Salado School in Salado, Texas according to plans and specifications prepared by Don E. Legge, Architect. Public Bid Opening will be at 2:00 p.m., November 12, 1992 in the Salado Elementary School cafeteria. Mail bids to the architect for delivery prior to 1:00 p.m., November 12, 1992 or hand-delivered to the bid opening.  
For instructions, interested parties should contact the Construction Manager:  
Don E. Legge, AIA  
3000 South 31st, Suite 308  
Temple, Texas 76502  
(817) 778-0877

**Notice of Intent to Incorporate Going Business**  
Notice is hereby given that HOLLOWAY ROOFING, transferor, a sole proprietorship, doing business at 3 Oak Park Lane, P.O. Box 362, Salado, Texas 76571, dissolved and that after August 14, 1992, the business will be conducted without change of firm name by HOLLOWAY ROOFING, INC., transferee, a Texas Corporation, at 3 Oak Park Lane, P.O. Box 362, Salado, Texas 76571. This notice is given pursuant to Article 1302-2.02 of the Texas Miscellaneous Corporation Laws Act and section 6.103(7) of the Texas Business and Commerce Code, and section 35 of Article 6132b of the Texas Civil Statutes.  
Dated September 1 1992  
Don R. Holloway

**Services:**

Fireplace and Chimney Repair & Cleaning. Flue caps & accessories. Call. Amlico Masonry & Fireplace Co. 939-0349 t/nb  
Brick Work: repair, remodel, and new construction. Mailboxes, fences, and column. Repair cracks and restore bricks and stonework. Amlico Masonry & Fireplace Co. 939-0349 t/nb  
Tree and shrub pruning, removal, hauling, general yard and lot maintenance, top soil. Repairs and remodeling. Victor Marek 527-3822. t/nb

EXPERT ALTERATIONS, experienced, Call Hope 947-5153 t/nb

HOT DATE -Salado Exxon will wash, vacuum and hand wax your car for only \$29.95 And we pick up and deliver - FREE 947-5512 t/n

Salado Exxon  
Your State Inspection Station  
947-5512

STORAGE SPACE IN SALADO 8X12, 16X24, and up. some have drive-in doors. call Salado Storage 947-5575 t/nb

Birthdays, Wedding & Special Occasion Cakes. Fresh-baked breads and desserts. Home catering. Cathy 947-8162 10/28o

**HELP WANTED:**

PARK RANGERS Game Wardens, security, maintenance, etc. No exp. necessary. For info call (219) 769-6649 EXT 9962 8 a.m.-8 p.m. 10/28p

Wanted Nanny, Housekeeper & cook yo live iin. Must have experience. 947-9972 10/28p

Help! Need Child Care provider for Part-time working Mom. Call 947-8259 11/4p

**ANTIQUES:**

Red Barn Antiques  
by appointment only  
947-5532

**FOR SALE:**

For Sale: Kenmore Dryer works good \$40 call 947-9161 10/28b

**GARAGE & YARD SALES:**

Craft & Garage sale-Rocking horse with padded seat and mane \$60 Quilt rack \$25, Decorative shelves with bow braces \$10 & up Trash box \$25, Clocks \$5 and up. Step stools with back \$15 and other wood items. GARAGE SALE Items - redwood picnic table nd 2 benches, new fishing reels, Router bits some carbide tips, Pocket knives., Drill bits. Friday Oct. 30 - Sun Nov. 1 8 A.M. -5 P.M. 2 miles north of Salado IH-35 Take Amity West & follow signs, Rain or Shine. 10/28p

Remodeling Sale- Route Two Box 77 Hartrick Bluff Road, Temple, Texas between Highways 93 & 436 off IH35 Look for signs. The white House on the Bluff has a garage full of stuff. Dried flowers, windows, doors, desk chairs, chest of drawers, luggage, Ford Pick-up and many miscellaneous household items. 7 a.m.-3 p.m. Sat. Oct. 31 10/28p

Garage Sale Sat. 8-5 Salado Hardware, Riding mower, push mowers, pink motorcycle, table saw, kerosene and propane heaters, portable dishwasher, water beds, clothes, bedding, misc. stuff. 10/28b



**THE HEART OF TEXAS**  
Tucked away in historic Salado, our unique No. 3 green on our challenging 18 hole Robert Trent Jones II golf course promises an unforgettable experience.  
Golf Packages starting at \$59.50 per person with 1 night lodging. Call for details. Season rates March 1 to October 31, 1992. Ask about our 7 night vacation package.  
Spacious creekside facilities for business meetings, wedding receptions, family reunions and other special occasions.

**Mill Creek**  
P.O. Box 67, SALADO, TX 76571  
1-800-736-3441 817-947-5141

**FOR SALE**

**WOODED ACREAGE TRACTS**  
RESTRICTED  
Starting at  
**\$5,995** per tract  
**WOODS OF SALADO**  
SALADO, TEXAS

**APPROXIMATE 1/2 ACRE LOTS**  
RESTRICTED  
Starting At  
**\$2,995** Per Lot  
**SALADO SPRINGS ESTATES**  
SALADO, TEXAS

**OWNER-AGENT -CONTACT Glenn Hodge**  
Office (817) 947-5134 Home (817) 947-5312

# SALADO REAL ESTATE

**REAL ESTATE FOR SALE:**

Beautiful 5 acres & 9.5 acres at Salado restricted, community water. Owner finance 947-5210 tlnb  
Salado Creek Lot. All underground utilities are installed and have passed inspection. This lot is ready for a fine new home or could be used as a Bed & Breakfast site. This lot has a wonderful view of Salado Creek and is near the Park. Jim Sim Benton 947-5767 or 947-5913 tlnb

**RIVERPLACE ESTATES**

Prestigious country living  
1-5 acre lots now available. Gorgeous wooded acreage in a peaceful, restricted setting - where scenic canyons and springs spill into the beautiful Leon River below. Just 200 yards north of the highly regarded Belton High School Complex. Your kids can walk or hike to school...Safely! 3 minutes to Lake Belton and downtown Belton. **YOU WON'T BELIEVE IT TILL YOU SEE IT!** 939-6705 tlnb

Timbered 10 acres,  
Stillhouse Lakefront  
Near Marina - Park  
Belton School Bus  
939-3857

**REAL ESTATE RENTAL:**

Rent Table Rock: Central air & heat, tables, kitchen, and restroom. ample parking. Call Richard Paul Thomas, 947-8887.

An ad this size  
could cost as little  
as \$5 a week.  
Call 947-5321  
for more info.  
Salado Village Voice

**BUTTERMILK  
BLUFF PROPERTIES**  
Ted Edens: Owner/Broker  
Looking for Property in  
Central Texas?  
Let me find it for you.  
Confidentiality assured  
when desired  
817-947-8002 817-770-8080  
Acreage • Commercial • Residential

**SHREDDING  
LAWN CARE  
MOWING  
LANDSCAPING  
FERTILIZER  
PLANTS • TOOLS**  
Salado Hardware  
Feed & Lumber  
947-8600

Septic System • Water Lines  
Backhoe Service  
**BOBBY McGRAW  
CONSTRUCTION**  
Licensed Septic System Installer  
(817) 770-8509 Mobile  
(817) 939-5008 Home  
Owners: Bobby and Robin McGraw

**GLC** Contractor  
of Salado  
Residential & New Construction  
Remodel • Commercial  
Design • Build  
Floyd Lee, builder  
817-947-5153

*Scholz Design*  
"Why Settle for Less than the Best"  


Only one of over 250 new Scholz designs in the classic Scholz Design Collection, "The Standard of Quality in Luxury Homes" from 1,700 to 10,000 sq. ft.

We are proud to offer these incomparable designs to you. You can review the plans at our office or borrow a catalog to view at your convenience.

**LILLY HOMES, INC.**  
Independently Owned and Operated  
4016 S. 31st St, Suite #200 (817) 770-0020  
Temple, TX 76502 (800) 442-3599



**ONE OF MILL CREEK'S FINEST HOMES!** A two-story built by Wayne Stillwell with distinctive features including two master suites with fabulous baths, plus another bedroom and bath. Functional decorator's kitchen breakfast area and separate formal dining. All this plus 25-foot ceiling living room with lots of glass overlooking 16th green on Mill Creek Golf Course. A real dream home for the discriminating buyer!

Larry Sands, 947-5580  
Stewart Smith, agent, 947-8140

*Properties by Larry Sands*  
Selling Historic Salado  
N. Main St. on the grounds of the Barton House



Bill Bartlett

Each office is independently owned & operated



**OPEN HOUSE:** Sunday, Nov. 1 1992 1-3 p.m. 304 Cedar Park Circle, Mill Creek. \$183,000. 3 BR, 2-1/2 BA, formal living and dining room, bright, sunny den, fireplace in living and master bedroom.

\$54 BR, and from **SOLD** 1 try, 3 d heat, nice

\$68,500: 3 BR, 1-3/4 BA. Dining room with bay window. Den plus fireplace and new carpet. 2 storage buildings on shaded lot.

\$69,500: 2 BR, 1 BA, A-frame home with magnificent view of Stillhouse Hollow Lake.

\$73,500: New Listing! Tudor design surrounded by oak trees. 3 BR, 1-3/4 BA.

\$129,500: 4 BR, 2-1/2 BA country style home on over 4 tree-covered acres. Long front porch, office.

\$129,750: 3 BR, 2-1/2 BA, formal dining room, new carpet, new wallpaper, fresh paint. Deck overlooks Mill Creek Golf Course.

\$170,000: 4 BR, 2 BA, office on 4 wooded acres. Workshop, well, sprinkler, hot tub, satellite, greenhouse. COnvenient location.

\$179,000: Spacious 3 BR, 3 BA on quiet cul-de-sac in Mill Creek. Fireplace in living room and den, jacuzzi tub, large kitchen with island.

\$285,000: Professional building located on Salado's Main Street. About 6,000 sq. ft. of retail and office space. Native stone exterior.

- ACREAGE AVAILABLE**
- 218 acres, IH-35, \$995.00/acre.
  - 58 acres FM 2483, \$175,000 Morgan's Point.
  - 24 acres Pea Ridge Road.
  - 14 acres Elm Grove, owner finance.
  - 10 acres woods, near Salado, owner finance, \$3,500/acre.
  - 8 acres, FM 93 in Belton.
  - 5 acres in Salado Springs, \$18,500.
  - 1.56 acres unrestricted on FM 2484.
  - Lot in Woods of Salado on Scenic Lakeview Dr., \$12,900.
- Several Small tracts near Salado, all restricted.  
Mill Creek lots beginning at \$9,900.

300 Main St. Salado  
817-947-5050  
1-800-352-1183

Rita S. Brown  
817-947-5714  
Melanie Kirchmeier  
817-947-9077  
Don Lowe  
817-947-9947  
Sue Perkins  
817-947-9141



**NEW HOME BY GLC of SALADO!** Sunny double bay windows welcome you home to this split arrangement of 3 bedrooms, 2 baths on one of the most desirable lots in Mill Creek. Designed for low maintenance and fuel efficiency, the home features a masonry fireplace in the family room, formal dining room, bay window in the breakfast room and huge walk-in closet. French doors from the master bedroom and the family room lead to the tree-shaded deck and a great view! \$139,900.

Price Reduced! Elegant traditional 4 bedroom, 3-1/2 bath with ornately trimmed formal dining room, living room with fireplace, large tiled kitchen-breakfast-den combination. Large, shaded deck. Wonderful family home! Now \$159,500.

Secluded three bedroom two bath home on a large tree-shaded lot, Many extras include an enormous patio, 12X12 workshop, sprinkler system, two dining areas, energy-saving construction, and fireplace. Priced to sell: \$117,000.

Please help us welcome Patti and Gerry Gamble and their family to Salado. They have purchased their new home at 320 Mill Creek Drive through us and will be settling in during the next few weeks.  
Welcome, Gambles! We're glad to have you here!

Mill Creek Realty

200 Mill Creek Dr. 947-8800

Bradley P. [redacted] Jim Thorn  
947-5422 947-5394

Sarah Lee 947-5153

# Inn at Salado brings in 2 buildings to village

## Record

FROM Page 2

### Great Idea

Speaking of Bentsen, he has come up with a great idea for the sale of home grown products. A law he is proposing would force all recipients of our foreign aid largess to spend each dollar on American made goods. What turned the good Senator mean on this subject was when the U.S. spent \$16 million to provide 989 trucks for Mozambique (that's in Africa) and all 989 of the vehicles were purchased from Japan and Germany! Bad enough giving our money away in the first place for questionable purposes but to have the givee take it and spend it with our chief competitors in the foreign trade market is enough to gag a buzzard. Hurray for Bentsen and a good idea to get behind. Wonder who will turn up in Congress against such lawmaking? Perhaps the German or Jap lobby?

That's -30-



The Baylor House (at top) was moved to Salado from Belton. It is now available for bed and breakfast. The Allen Meeting Hall (below) was moved in from Davilla. It is now available for group meetings.



If you have driven down Pace Park Road lately you have undoubtedly noticed some new (but old) buildings behind the Inn at Salado.

One of them is a quaint little Victorian home now called the Baylor House. It was moved from Mary Hardin-Baylor University after a modest contribution spared it from the bulldozer. Now, fully renovated, this turn-of-the-century gem hosted its first guests in August and has already become a favorite.

It offers separate but adjoining large rooms, each with a private bath and entrance. It's 12 foot ceilings are of beaded lumber and the walls are the original 1 inch by 12 inch wood planks covered with a decorative wallpaper. Each room is furnished with antiques, including a canopy bed.

Another big attention getter is the Methodist Chapel that was moved in from Davilla. It is now called Allen Meeting Hall. Abandoned since the 1950's, the Hall includes its original bell (found in Bartlett) and cornerstone,

inscribed "Allen Chapel - erected 1901". The roof and walls were dismantled during the move and restoration, then reassembled exactly as before, using the original ceiling and wall boards inside and many of the original board and batt planks outside. The original floors were retained and two baths and storage closets were added in front.

The Hall will comfortably seat 75 people (45 or 50 with tables) and offers the latest in audio-video and projector equipment. Catering is available through Brownings Courtyard Cafe or your choice. Ample off-street parking is provided. The first function in the Hall was Oct. 27 and reservations for suitable events are now being taken by Kay Kelley and Darlene Cosper at 947-8200.

Civic groups are invited to use the Hall during the week at no charge, except a small cleaning fee.

The entire Inn at Salado and Allen Meeting Hall and Baylor House will be open to the public during the Christmas Tour of Homes.

## Chet Edwards: Fighting for Change. On our Side.

"Like you, I'm angered that so many people in government don't live up to a higher standard. That's why 2 years ago I ran for Congress — to put government back on the side of people, not politicians. I'll do everything in my power to make the hopes and dreams of my fellow Central Texans come true."

Chet Edwards

☆ Texas Democrat

# Chet Edwards for Congress

"Chet Edwards and five other freshman Democrats have sparked a revolt in the House... have begun a wave of reform that may change forever a House mired in scandal." Business Week Magazine, June 1, 1992

### 1. Fights for jobs in Central Texas

Chet Edwards has fought for jobs in Central Texas. He supported important agricultural programs, flood aid for farmers and ranchers and the move of 14,000 new soldiers to Ft. Hood. When the small town of Mound was threatened by floods, he helped secure a new dam to protect homes and business.

### 2. Fights to save your tax dollars

Unlike most politicians, Chet Edwards actually gave back \$231,000 to the government from his congressional office in 1991. Chet didn't bounce any checks, and he has a 98% attendance record. He helped lead the fight for a Balanced Budget Amendment and is pushing reforms to stop pork barrel spending.

### 3. Fights for affordable Health Care

Chet Edwards knows every month senior citizens and Veterans are hard hit by the high cost of prescription drugs. That's why Chet helped write a new bill to stop the big drug companies from price-gouging.

Paid for by the Edwards for Congress Committee