

Luedecke resigns as election admin, Dutton tapped

By TIM FLEISCHER
EDITOR-IN-CHIEF

The Bell County Election Commission, meeting for only the third time since its inception, accepted the resignation/retirement of Bell County Elections Administrator Melinda Luedecke and appointed Matthew Dutton to fill the position on an interim basis until after the Nov. 3 election.

Luedecke's resignation is effective Sept. 8. It was submitted to Bell County Judge David Blackburn (chairman of the Bell County Election Commission) on Aug. 24.

"While this was a very tough decision to make and after much consideration, I feel that after three years of no raise or increase in compensation, my responsibility to my family is and should be my highest priority," Luedecke stated in her letter to Judge Blackburn. "With circumstances as they are, I feel I won't be able to give the full commitment necessary as head of the Elections Department in this very important election year. It is with great sadness that I must leave the County after 28 years of employment."

Luedecke's resignation triggered the meeting of the Bell County Elections Commission, which is composed of Bell County Judge Blackburn, Bell County Clerk Shelley Coston, Bell County Tax Assessor-Collector Shay Luedecke, Bell County Republican Party Chair Nancy Boston and Bell County Democratic Party Chair Chris Rosenberg.

Dutton holds a Bachelor of Science degree in political science. He is the Assistant Elections Administrator for Bell County, a position he has held since 2011.

In that position, he has assisted and/or overseen several functions of the Elections Administration, including ballot by mail requests and issues, addressing open records requests, programming state elections, coordinating election supplies, polling locations, assisting the administrator and other staff in their duties and working with party chairs.

Prior to discussion on the appointment of Dutton to the interim position, the Commission listened to public comments from several residents:

Irene Andrews of Nolanville expressed some of her concerns at the resignation of the election administrator just over two months before voting begins. "I hope you will make every effort to see that every voter is safely able to cast their vote, both in person and by mail. Upholding the integrity of the election has never been more important.... This election must be free of any perceived or real scandal."

"It concerns me that there is a change of guard just over a month away from the election," said Sharon Rose of Temple, who is a voter deputy registrar. "We have always had a good relation-

ship with the election administrator. Can we expect the same standards as we have been accustomed to? I hope that we can have the same or similar relationship with Matthew if he is appointed."

"Melinda has served our county very well for the time she was here," Melissa Brown of Kille said. "She has done her best to make sure our elections are run as flawlessly as possible."

Brown asked how long would it be between the temporary and permanent replacement and stressed the importance of vetting a replacement. "During a presidential election year, the appointment should have experience in running a presidential election," she said, adding that the administrator must help coordinate the partnerships with municipalities, school districts and other local governments for the local elections.

Pamela Cleveland of Temple is also a deputy voter registrar and election worker. "We want to be assured that we will receive the same level of service as we have in the past," she said.

"We are here," Alexis McBride of Temple said, "We are watching and we want to make sure this election is fair and that all votes are counted and that everyone has access to ballot as well."

"From this chair," Judge Blackburn said, "my objective for every election is a perfect election. We want them to run smoothly. Everyone that is eligible to vote can vote. I want everyone who votes, for their votes are counted. I think in Bell County, we have a good history of that."

Judge Blackburn explained that with the timing of Luedecke's resignation, the Commission was taking the best steps possible to fill the position in a timely manner.

He added that Luedecke also recommends Dutton for the interim position.

"After the November election, we do need to go through process and let the process run its course," he said. "I am not sure what the time line would be. We need to have that discussion, after Nov. 3 election. We need to do everything we can to make sure this election goes off as smoothly as possible."

"He has worked for previous administrator and this one as well," Boston said. "He is so dedicated and is as thorough at his work as any I have ever seen."

"Matthew was part of staff when the elections administrator position was created," Coston said.

"He has done an excellent job," Rosenberg said. "However, I share the concern of folks that we may be understaffed."

Dutton told the commission that in addition to filling his position in the office, he would like an additional temporary full-time position and two part-time employees through the election.



Gaylon Stagner and Ronnie Wells discuss Wells' sculpture during the opening reception for the Reflections of Salado exhibit that is currently open at the Cultural Arts Center in Temple. (PHOTO BY MARILYN FLEISCHER)

Public hearing on budget Sept. 3

By TIM FLEISCHER
EDITOR-IN-CHIEF

Village aldermen will conduct a virtual public hearing on the proposed fiscal year 2021 general operating budget at 6:30 p.m. Sept. 3.

The Village will be casting the meeting via ZOOM, meeting ID 883 8329 8896 with the password 844832.

The public can also call in to the meeting at these numbers using the meeting ID and password:

- 1-346-248-7799
- 1-253-215-87 82
- 1-669-900-6833
- 1-301-715-8592
- 1-312-626-6799
- 1-929-205-6099

The proposed budget was filed on Aug. 6 with a proposed tax rate of \$0.5339 per \$100 valuation, more than four cents below the current property tax rate of \$0.5752 per \$100 valuation.

The board will propose the tax rate to be published prior to the final adoption of

the tax rate. The proposed rate can be no higher than \$0.5339 per \$100 evaluation.

Despite the cut in property tax rate, the budget is 15% higher than the current M&O budget. The proposed spending plan includes \$442,708.63 for administration costs, including \$232,509.05 in administrative personnel services. Development services expenditures are \$11,950.74. Public Safety costs are \$571,003.58. Of that, \$50,000 is for fire

services contract with Salado Volunteer Fire Department, \$506,453.58 for police department (\$392,524.62 for police personnel) and \$14,550 for municipal court.

The Parks Department expenditures total \$79,550, including \$55,000 in capital outlay.

The Street Department expenditures total \$273,000, including \$157,500 in capital outlay for reconstruction of Salado Plaza Drive.

SEE BUDGET, PAGE 3A

Bell County announces \$800,000 in local small business grants

Bell County will be providing \$800,000 in grants to small businesses in the county that were adversely affected by closures due to Coronavirus. The maximum grant amount per business is \$15,000.

Eligibility Criteria

- Must be a locally owned, independent business responsible for all revenues and expenses.
- Must have 25 or fewer FTE (Full time equivalent) for payroll prior to disaster declaration.
- Must have a current or anticipated revenue decline beginning after March 1, 2020, resulting from COVID-19 impacts.
- Must have a physical and publicly accessible location within a commercial building or business district.
- Must have been in continuous operation prior to a disaster declaration ordering the closure of your business.
- Cannot be a home-based business.
- If owner has more than one business, the owner is eligible to apply for only 1 business under this program. Business MUST be located within Bell County. Ownership defined as 20% or more. Application will include disclosure of all 20% or more owners.

• Applicant must have no outstanding Bell County tax liens or judgments and will be required to self-certify to this.

• Must currently be in operation or plan to reopen when eligible.

• Must have been considered a "non-essential business" during disaster declarations

• Examples include: Massage Establishments, Hair Salons, Tattoo/Piercing Parlors, Nail Salons, Bars, Restaurants, Breweries, Wineries, Small Retail Businesses, Gyms and Fitness Facilities, Indoor Amusement Facilities including Bowling Alleys, Pool Halls, and Movie Theaters; and Gig workers that own or lease an office space not located within a residence

Eligible use of grant funds

- Payroll costs for employees
- Contract labor
- Supplier payments
- Rent, lease, or mortgage payment (for real property used for business purposes, like storefront or warehouse, excluding personal residence.)
- Rent, lease, or purchase payment for business property (e.g., delivery vehicle; food truck; kitchen equipment; technology, payment,

and communications systems and equipment)

• New or expanded technology applications and Wi-Fi services

• Utility payments for business properties, excluding personal residence.

• Reasonable costs for business operations (insurance, raw materials, marketing expenses)

• PPE and sanitation supplies and equipment

• Interest on other business debt obligations incurred before February 1, 2020, excluding personal residence

The application must be complete and submitted electronically to anna.barge@ctcog.org or mailed to: CTCOG, 2180 N Main Street, PO Box 729, Belton, TX 76513 Attn: Planning and Regional Services, Bell County CRF. (Questions can be directed to Anna Barge at anna.barge@ctcog.org or Uryan Nelson at uryan.nelson@ctcog.org)

On behalf of Bell County, the program will be administered by the Central Texas Council of Governments. The grant program was approved on a motion by Bell Co Commissioner John Driver, seconded by Commissioner Bobby Whitson.

TDEM is distributing \$55

per capita for each government entity, Bell County is eligible for is \$3,210,735

Of the \$3.2 million, 75% of the funding is to be spent on public health activities, medical expenses and payroll expenses.

The other 25% can be used on

• expenses of actions to facilitate compliance with COVID-19-related public health measures

• expenses associated with the provision of economic support in connection with the COVID-19 public health emergency

The CTCOG will put together funding recommendations based on their review of the grant applications and provide a packet to the Bell County Commissioners Court for review and approval of funding

• Bell County will fund approved applications and will request reimbursement from TDEM through the grant management portal

The first cycle for application will be Sept. 1-10. Applications can be found online at bellcountytexas.com or ctcog.org.

Applications will be reviewed, and recommendations will be presented at the Sept. 21 Commissioners Court meeting

FORUM

An Open Exchange of Ideas

Large cap growth stocks push S&P 500 to records

The Markets

Our favorite if sometimes irrational stock market indicator, the S&P 500 Index, rose a whopping 3.6% for the week ending 8/28, to close at 3508.01 setting yet another record high. It is now up 8.58% for the year and almost 20% from this time a year ago. It remains dominated by a few very large capitalization growth stocks while the more reasonably priced, value side of the index is still down about 11% for 2020 and only up a bit over 3% for twelve months.

Following statements at the annual Jackson Hole central bankers' conference, the yield on the 10-year U.S. Treasury note soared over 15% to end the week at 0.732% while the 30-year Treasury bond yield climbed above 1.5% for the first time since the pandemic hit. Shorter term Treasury securities remained near zero out to about 2 1/2 years, effectively forecasting the general economic malaise we are experiencing could last as much as three more years. West Texas Intermediate crude oil joined in, rising 1.78% for the week to \$42.99, but is still down almost 30% year-to-date as demand for fuel continues to be slack.

The Economy

There were plenty of indicators during the week reminding us that the economy has not returned to normal but continues to crawl out of the coronavirus hole it fell into. The Commerce Department announced that consumer spending, the engine that drives about two-thirds of our economy, rose 1.9% in July, far below the 8.6% and 6.2% increases in May and June. Those rises, while impressive, leave the total about 4% down from where it was a year ago and about 5% below where it was in February.

Durable goods orders jumped 11.2% in July after rising 7.7% in June. Again, the increases were impressive, but the end result is a number down about 5%

Market & Economic Update

By Jeffrey W. McClure



for the last twelve months. The lion's share of the durable goods orders was in the transportation sector, up 35.6% after a nearly 20% increase last month. Defense aircraft followed by trucking companies appear to be leading the way as online, home delivery demand has exceeded capacity. The increase in durable goods orders looks less impressive if the likely one-time jump in defense aircraft and trucks is removed, dropping the rise to 2.4%. Even with the impressive rise in orders for July, durable goods orders are still down about 5% from a year ago.

Suggesting that the unemployment figures will remain elevated for an extended period, new business formation is stuck at about zero while businesses shutting their doors for good is at the highest rate since official records have been kept. That observation is reinforced by the report from the Labor Department that new jobless claims last week were again just above one million with officially unemployed workers remaining in the 15 million range, not counting independent contractors or the self-employed. MGM announced 18,000 layoffs, and American Airlines warned of 19,000 job cuts which would bring its total layoffs to over 40,000. Schlumberger, the oil field service company, announced it was cutting 21,000 workers.

The big economic news for the week was not the slowly recovering spending and durable goods numbers, but a dramatic change in Federal Reserve Board policy. Chairman Powell announced in his speech at the Jackson Hole conference (held virtually this year) that the Fed would no longer raise rates preemptively to head off future inflation but would rather wait until infla-

tion was well above 2% for an extended period of time before increasing rates. His speech clearly implied that short term interest rates will remain near zero for probably the next several years.

In essence, the Chairman of the Federal Reserve Board announced that the threat of any significant inflation in our economy has disappeared. Since the double-digit inflation of the 1980s the Fed has steadfastly seen fighting inflation as its highest priority and declared repeatedly that by the time inflation was visible it was exceedingly difficult to defeat. The result was a now four-decade old policy of increasing interest rates well before inflation appeared. That policy has now officially ended. Globalization and automation have created a world in which, other than in local services, any attempt to increase prices has been met by someone else offering the product at a lower price.

If there was any doubt before, it is now clear that we are in and likely to stay in a very low interest environment for years to come. There was a time, only a couple of decades ago, when drawing a 4% or even 6% interest income to live on was a viable strategy. Today, a reasonable interest income would be more like one and a half percent, if you can find it!

The big, long-term picture remains the same. Until we have an effective vaccine and the population is widely vaccinated, we are in for slow going; an environment measured by how far down we are rather than year-over-year growth. Once the coronavirus is gone, the rebuilding process can start in earnest. Following that, it is our opinion, there will come an economic boom as great as our nation has ever seen.



Salado Middle School students are NASA WEAR challenge finalists. (COURTESY PHOTO)

Salado Middle Schoolers finalists in NASA WEAR nationwide challenge

Congratulations to Salado Middle School students Cash Adams, Alicia Alsop, Wesley Engleking, DeVonte Foster, Thomas Novotny, and Caity Wilson for being selected as one of the top five teams in the nation in NASA's WEAR Challenge. This competition addresses an authentic, current space exploration challenge to protect Artemis astronauts from radiation on deep space missions. Our teachers sponsoring this team are Colleen Gilchrest and Laura Tomlin.

Their team was selected from 66 design entries from schools and organizations across the U.S. Through NASA's Artemis program, the first woman and the next man will land on the Moon by 2024 and establish sustainable lunar exploration with NASA's commercial and international partners by 2028. Their team was one of the five teams selected in the head gear design category.

During phase one of the WEAR Challenge, students developed a design to provide wearable astronaut radiation protection for deep space missions. During phase two, students

Superintendent's Corner

by Dr. Michael Novotny



produced a prototype of their design and created a promotional video for their product. The Salado Middle School team created one of the top prototypes and promotional videos and has been invited to participate in a culminating event later this year with NASA. This would have taken place at the Langley Research Center in Virginia, however, due to COVID-19 this event will take place online.

NASA's Office of STEM Engagement offers a variety of student challenges across grade levels. These activities support the agency's education policy of using NASA's unique missions and programs to engage and encourage students to pursue science, technology, engineering and math (STEM) careers. Next Gen STEM is an effort to develop STEM products and opportunities that provide a platform for Artemis Generation students to contribute to NASA's en-

deavors in exploration and discovery. WEAR is made available through the Moon to Mars mission focus area for Next Gen STEM which focuses efforts to develop activities that engage K-12 students and contribute to NASA's missions. Opportunities for college and university students to support NASA's missions are provided through the Artemis Student Challenges.

To learn more about NASA WEAR, visit: http://go.nasa.gov/NASA_WEAR

For social media updates, follow: @NASAedu and #NASA_WEAR

For more information about NASA's STEM Engagement programs, visit: <https://www.nasa.gov/stem/> Congratulations again to Salado Middle School students Cash Adams, Alicia Alsop, Wesley Engleking, DeVonte Foster, Thomas Novotny, and Caity Wilson and teachers Colleen Gilchrest and Laura Tomlin!

Village mayor, aldermen deserve loud shout out

To the Editor:

It is time for a loud shout out to our past and present Salado Mayor and Aldermen that activated their plan to resurface our Village Main Street. Their vision of the Main Street Project added street lighting, initial curbing and sidewalks as well. Improved parking spaces and bicycle lanes were also part of the project which greatly improved Village maneuverability and safety. Each of these improvements sends a message to our citizens and Village visitors that this Village is certainly cognizant that assets of this nature are a welcoming

Your Voice

Letters to the Editor

message to Village guests and that our businesses are a caring group of merchants.

None of this would have taken place had our Mayor, Aldermen, city Chamber Leaders and other Village leaders not taken the time to visit our Governor and TX-DOT director to lay out their plan. This plan included the payment for the Main Street Plan, which belonged to the State of Texas, as their re-

imbursement for significant financial losses suffered by our Village businesses due to numerous delays (years) of I-35 construction completion. Seems like a hard sell, you are right, but it was accepted by the Governor and his staff. I hope our citizens are proud of the substantially complete Main Street Project.

Carrol McDougal Proud to be a Salado citizen

LETTERS TO THE EDITOR ARE WELCOMED ON A VARIETY OF TOPICS. EMAIL YOURS TO NEWS@SALADOVILLAGEVOICE.COM WITH CONTACT INFORMATION FOR VERIFICATION.

Salado Village Voice, 213 Mill Creek Drive, Suite #125 • P.O. Box 587, Salado, TX 76571

Phone: 254/947-5321

Salado Village Voice is published weekly every Thursday by Salado Village Voice, Inc., 213 Mill Creek Dr, Suite #125, PO Box 587, Salado, Texas 76571. Periodicals postage paid at Salado, Texas. Periodicals permit #02527. POSTMASTER: Please send address changes to Salado Village Voice, PO Box 587, Salado, TX 76571. Subscription Rates: \$26 per year in Bell County, \$28 per year outside of Bell County; \$38 per year outside of Texas.

Office Hours: 9 a.m.-5 p.m. weekdays

News releases: news@saladovillagevoice.com

Display advertising: advertising@saladovillagevoice.com

Classified advertising: classifieds@saladovillagevoice.com

Deadlines: Display ads • noon Fridays Classified ads • noon Mondays

Editorial policies: Opinions on the editorial pages are those of the writer, not necessarily the owners or employees of the Salado Village Voice. All letters to the editor should be signed and have a phone number and address for verification. The editor reserves the right to reject and/or edit any letter. Letters should be limited to 300 words. We DO NOT publish poems in our Letters to the Editor.

Letters to the editor can be emailed to news@saladovillagevoice.com or mailed to Salado Village Voice, PO Box 587, Salado, TX 76571.

They can be delivered to 213 Mill Creek Dr., Suite #125.

Tim Fleischer, Editor-in-Chief
news@saladovillagevoice.com
com

Marilyn Fleischer, Managing Editor
advertising@saladovillagevoice.com

Royce Wiggin, Admin. Assistant
rwiggin@saladovillagevoice.com



Budget FROM PAGE 1A

According to the agenda packet for the meeting, the proposed Fiscal Year 2021 General Fund Operating Budget totals \$1,536,780 -up 14.75% from the current fiscal year's operating budget for the Village of Salado. The proposed spending plan includes \$150,000 for reconstruction of Salado Plaza Drive, \$25,000 for general street repairs and \$15,000 for a preliminary engineering study relating to the possible replacement of the scenic, one-lane Southridge low Water Crossing.

In addition, the proposed General Fund Budget includes \$35,000 for maintenance of the new Main Street sidewalks, landscape and decorative streetlights. Also, \$70,000 is allocated for public park improvements including \$20,000 for landscape maintenance in Pace Park and Sirena Park, \$50,000 for the construction of a new parking lot in Pace Park and \$5,000 for park signage.

There is no funding allocated for additional personnel or employee pay adjust-

ments.

Funding for the proposed General Fund Budget will come from service revenues, franchise fees, and tax revenues along with a one-time transfer of \$65,175 from the General Fund reserves.

A 10% increase in the Village's license and permit fees is proposed for the coming fiscal year. This would be the first service fee increase in more than five years.

As for property taxes, a Maintenance & Operation (M&O) Ad Valorem Tax Rate of \$0.2020 per \$100 property valuation is proposed to help fund Village operations in the coming fiscal year. That compares to the current M&O Ad Valorem Tax Rate of \$0.2070 per \$100 property valuation.

The wastewater operating budget is \$215,920 in expenditures, funded by monthly service fees. Through May of the current fiscal year, the Village has collected \$90,390.68 of the \$238,115.52 budgeted in monthly service fees.

The debt service budget

will total \$753,983.50 in expenses, of which \$485,000 is bond principal and the remainder is interest. Income for the debt service is budgeted at \$690,844.91. The Village will transfer \$66,638.59 from the general fund to cover the difference.

The Hotel Occupancy Tax budget will total \$227,000 in revenues, the same amount at 2019-2020 budget. Actual HOT revenue through July 2020 has been \$97,415.28.

Personnel services account for almost half of the HOT expenses at \$103,554.28 with \$61,000 for a director and \$23,400 for part-time employees. The director's position has been vacant since Chadley Hollas left earlier this year.

Other expenditures include the lease of the visitors center at \$18,204, \$70,000 in marketing, \$21,000 to the Public Arts League and another \$10,000 in miscellaneous operating costs.

The village has spent \$135,758 in HOT funds through July 2020.

Central Texas Food Bank distributes food Sept. 12

The Central Texas Food Bank will distribute free food to help those in McLennan and Bell Counties who are facing increased food insecurity during the COVID-19 pandemic. Distribution will be 9 a.m.- 11 a.m. Sept. 12 at Temple College, located at 2600 S. 11 St in Temple, TX. At these special drive-through food distributions, attendees will receive an assortment of food items totaling between 44 lbs and 76 lbs., depending on available supplies.

Before coming to this drive-through event, make appropriate space in your trunk or hatch.

During the COVID-19 pandemic, the Central Texas Food Bank is continuing to meet the needs of those facing hunger.

In addition to these special distributions, Central Texans in need can also access food through our network of partner pantries and mobile food pantry distributions throughout Central Texas. For the latest information on getting help, go to centraltexasfoodbank.org and click on "Find Food Now". Once you find the distribution site nearest you, call them to confirm their hours of operation since things are changing rapidly. You can also call 2-1-1 for the latest information.

The Food Bank stands ready to help all Central Texans affected by the pandemic, but we've seen

demand for our services skyrocket recently, severely straining our resources. So if you're able to help, we need monetary donations. Please donate at centraltexasfoodbank.org.

Curbside Pick-up and Delivery

Bruce A. Bolick, CPA
(254) 718-7299

Jennifer Westbrook, EA
(254) 947-1040

560 North Main • Suite 4 • Offices A & C
SaladoCPA@aol.com or SaladoTaxes@gmail.com

LASTOVICA
Fine Jewelers, Inc.
"Known for Service"

Prompt In-Store Jewelry Repairs

Diamond Sales • Custom Casting • Diamond Appraisal • Watch Repair • Diamond Setting Jewelry Repair

1202 S 31st St. & Ave. L • Temple
773-5772

Dossman Funeral Home
IN SERVICE TO OUR FELLOW MAN

933-2525
serving all of Bell County

DossmanFH.com

2525 N. Main • Belton

JD's Travel Center
JD's Grill temporarily closed

Best gas prices in town!



15881 South IH 35, Salado | (254) 947-5228

Benny's
Ristorante Italiano

17 South Main Street, Temple


254.771.0169 www.BennysRistoranteItaliano.com



CARUS DENTAL

Ron Henderson, DDS
Dr. Henderson provides general dentistry services including: crowns, bridges, implants, fillings, root canals and dentures

477 Thomas Arnold Road, Salado
254-947-8067
CarusDental.com



Will-O-Bell Nursing Home

412 N. Dalton (Hwy 95)
Bartlett, TX 76511 (254) 527-3371

Private Room Rates
Starting at \$142.50 per day

Adult Day Services
Monday-Friday 7 a.m. - 6 p.m.
for only \$85 per day

Not all nursing homes are the same. Before you decide, Stop by and visit Will-O-Bell.

We know it is often difficult to move and leave familiar surroundings. Our friendly, attentive staff will make the transition easier for you. In our warm, caring and secure environment, you will find privacy, companionship, delicious meals, fun activities and a professional staff to meet your needs.

www.will-o-bell.com or email us for a free brochure at penny_brant@willobell.com



COL. CHARLES W. ABBITT
U.S. AIR FORCE, RETIRED
MAY 25, 1920
AUGUST 28, 2020

Charles Webb Abbit was born May 25, 1920 in the pre-Civil War ancestral home on Gravel Knoll Farm near the Appomattox Surrender Grounds. "Big Dad" passed on to be with our Lord August 28, 2020.

He graduated at age 16 from Appomattox Agriculture High School as Salutatorian and Class Prophet. He also learned to play mandolin and guitar in groups with his brothers.

Charles graduated from the Virginia Military Institute in May 1941, with a Bachelor of Science degree in Electrical Engineering, and a Second Lieutenant commission in the US Infantry. Charles was ever thankful for the great sacrifices made by the entire family to put him through VMI. His career in the Infantry was short lived - in a few weeks he received orders to report to Harvard University and then MIT for special classified technical training in the principles of radar, a new and secret technology.

The Japanese attack on Pearl Harbor hastened more training at the Signal Corps School at Fort Monmouth, N. J. and transfer to the 501 Aircraft Warning Regiment at Fort Dix, N.J. First Lieutenant Abbit began training as a Navigator at Hondo, Texas, one of Air Training Command's largest navigational schools of World War II.

While serving there he married Ann Boleyn Charles on December 26, 1943. Subsequently at European Group Headquarters as Group Navigator, Captain Abbit became the Navigator for the 90 some planes in the Commander's C-47. By far the most important mission was leading the Group in crossing the Rhine River, which in turn led directly to Germany's surrender.

In May 1960 Colonel Abbit was diagnosed to experience glaucoma in both eyes. The Air Force Flight Surgeon grounded him permanently, leading to a decision to retire.

Charles and his family moved to Houston for his new position as Manager of Engineering, Office of Network Planning, to help Philco Houston Operations build and operate the Integrated Mission Control Center for NASA. Charles became Manager, Mission Control Center Operations Activity, responsible for management of the MCC facility, its equipment and operations and maintenance people with the objective of operational readiness by launch time of Gemini-Titan-4, June 1965. In this job that Charles received much praise and prestige from NASA leaders, Chris Kraft, Gene Kranz, and many others.

Charles became the MCC Program Manager, responsible for Philco's performance supporting President Kennedy's challenge to have an American on the surface of the moon by the end of the 60s. The MCC configuration updates increased as Apollo orbital flights continued and ultimately Armstrong and Aldrin landed the Eagle on the Sea of Tranquility on July 20, 1969, while Collins circled the moon.

In September 1983 Charles and Ann "faded away" to second retirement in Central Texas, first to a 100-acre farm in Bartlett, then in 1986 to Salado. Everything was very pleasant in Salado until Ann died on Christmas Eve 1996.

In 2005 Charles moved to The Wellington at Arapaho retirement community in Richardson, Texas. He maintained an extraordinary level of activity and service there, organizing Sunday vespers services, leading hospital visitations, etc. He still found time for his guitar and gave occasional concerts for the residents. Some of his performances can be seen on You Tube as "Charlie Abbit Live at the Wellington".

He is survived by his son, Charles W. Abbit, daughter Caroline Abbit Sauer, Grandson Charles W. Abbit III granddaughter Elizabeth Sarah Sauer, and great-granddaughter April Rose Holder.

A celebration of his life will be held at Broecker Funeral Home in Salado at 10 a.m. September 3, 2020 followed by burial at Salado Cemetery. In lieu of flowers, the family suggests donation to one's favorite charity.

PAID OBITUARY



New Exhibition Highlights Underground Railroad and Bell County African American History

St. Joseph's Episcopal Church

Sunday School
Sun. 9 a.m.

Holy Eucharist
Sun. 10 a.m.



881 North Main Street
(254) 947-3160
StJosephSalado.org

St. Stephen Catholic Church

Religious Education Classes - Wednesday
K thru 12th 5:30 - 8 p.m.

Mass Schedule
Tuesday - 6 p.m.
Wed & Thurs - 8:30 a.m.
Friday - Noon
Saturday - 5:30 p.m.
Confessions 4:30-5:15 p.m. or call for an appointment

Friday
Adoration (Holy Hour) 11 a.m.

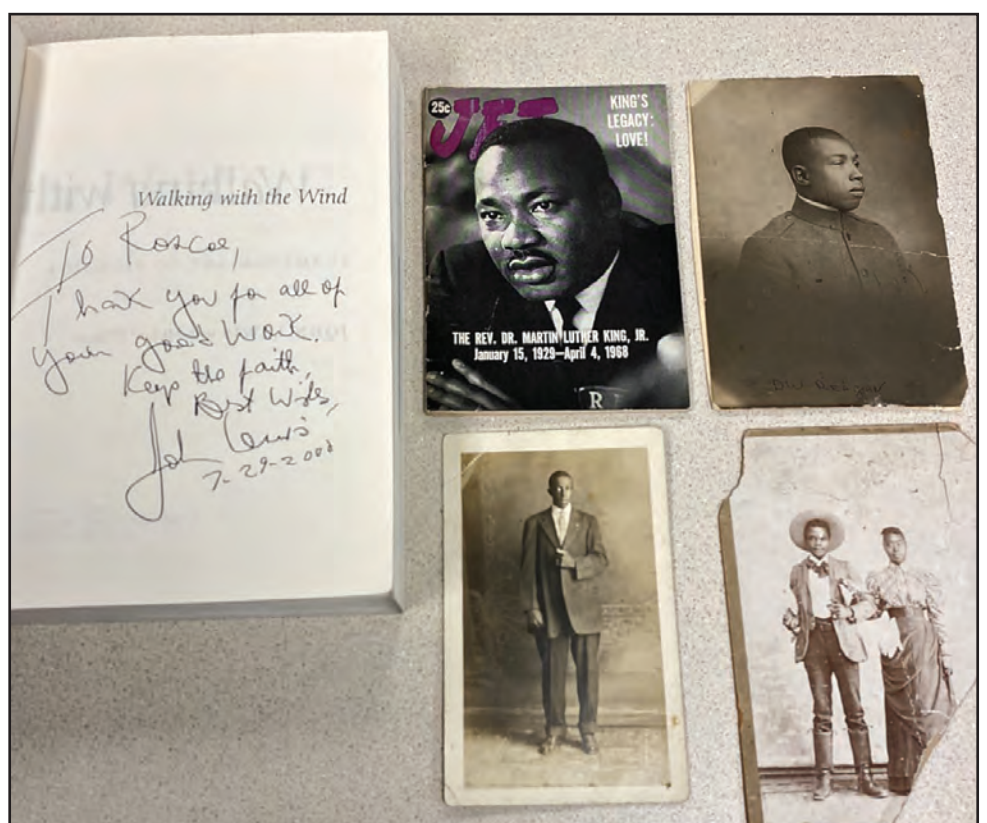
Sunday
(English) 9 a.m.
(Spanish) 11 a.m.

Office Hours: Monday - Friday
9 a.m. - Noon & 1:30 - 3 p.m.

601 FM 2268
947-8037
www.saintstephenchurch.org

Bell County Museum will open Through Darkness to Light: Photographs Along the Underground Railroad on Friday, Sept. 4. The exhibition will include a section dedicated to African American life and accomplishments in Bell County; Portraits of Progress: African American History in Bell County. The exhibition will be on display Sept. 4 - Oct. 17. Admission to the museum is free.

From 1830-1865, an estimated 100,000 people who were enslaved embarked on the journey to freedom. Occasionally, they were guided from one secret, safe location to the next by an ever-changing, clandestine group known as the Underground Railroad. Through Darkness to Light photographer Jeanine Michna-Bales spent more than a decade researching "fugitive" people who were enslaved and the ways they escaped to freedom. While the unnumbered routes of the Underground Railroad encompassed countless square miles, the



Photos of the historic Reagan family of Bell County, Jet magazine with article by Rev. Roscoe Harrison, copy of Walking with the Wind signed by the late Rep. John Lewis.

COFFEE WITH CHRIST

Join Us **SALADO CREEK MINISTRIES**

9 a.m. Sundays
Holiday Inn Express
I-35 & FM 2484 Salado
www.saladocm.org



THE PENTECOSTALS

**ENCOUNTER GOD.
BE EQUIPPED WITH TRUTH.
ENGAGE THE WORLD.**

Worship with us Sunday at 10:30am just two miles west of Salado High School on FM 2484.
gracesalado.com/visit



GRACE CHURCH SALADO



Jeanine Michna-Bales, On the Way to the Hicklin House Station, San Jacinto, Indiana, 2013.

path Michna-Bales documented encompasses roughly 2,000 miles and is based off actual sites, cities, and places that freedom-seekers passed through during their journey.

Portraits of Progress is a collection of artifacts and photographs illustrating aspects of African American history in Bell County. The special exhibition was made possible by artifact loans from Rev. Roscoe Harrison Jr., Anita Reagan, Ron Reagan, and the Bell County Museum's Bennett Curtis Collection. Photographs of historic African American families, a Temple Dunbar High football, copies of Rev. Harrison's articles in Jet magazine (1960s), and a copy of Walking with the Wind, signed by late the

Rep. John Lewis will be on display.

"This is an important exhibition for our museum and the people of Bell County. Both the Underground Railroad and African American History in Bell County illustrate a broad narrative marked by struggle, pain, and hope. We are proud to partner with the African American community in Bell County to produce this exhibition, and hope it is a venue for constructive conversations," said Executive Director Coleman Hampton.

THE VILLAGE CHURCH
Salado, TX

Meets on Sundays at 10:00 am at the Salado High School Cafeteria
Come as you are!

Pastor Billy Johnson.....972-978-2239

Broecker FUNERAL HOME
....serving those who love and remember



949 West Village Road, Salado
BroeckerFuneralHome.com (254) 947-0066

Salado UNITED METHODIST CHURCH

Rev. David N. Mosser
650 Royal Street
(254) 947-5482

Office hours:
Mon - Fri 8:30 a.m. - 4 p.m.

www.saladoumc.org

In-Person Outdoor Worship
BEGINS SEPTEMBER 13TH / 9 AM / SUMC GROUNDS / CASUAL DRESS / BRING A LAWN CHAIR

-OR-

Continue Online Worship, Devotionals, & Bible Study
SALADOUMC.ORG/WORSHIP-ONLINE FACEBOOK.COM/SALADOUMC
YOUTUBE - SEARCH "SALADO UMC"

3C Cowboy Fellowship



16258 Gooseneck Road, Salado
Church service starts 10 am
(254) 947-7211
www.3ccowboyyfellowship.org
Follow events on our website calendar


FIRST Baptist Salado

www.fbcsalado.org
(254) 947-5465
Main St. at the Creek Dr. Travis Burleson, Senior Pastor

**Worship at 8:30am & 11am
Sunday School 9:45am**

fbcsalado.org
facebook.com/fbcsalado
Youtube:
https://www.youtube.com/channel/UCjZiKbJHYq_mW3TbJo0_qpA

Salado Church of Christ



*Love God
Love Others
Serve All*

Come find out why our church family is driven by the same purpose Jesus gave to all his disciples - to love God completely, to love our neighbors (as we love ourselves), and to serve all the above. You are always welcome!

Sunday
Bible Classes • 9 a.m.
Worship • 10 a.m.
Spanish Worship - Call Church for times

947-5241
IH-35 at Blacksmith Rd.
www.saladochurchofchrist.com

Wednesday
Bible Classes • 6:30 p.m.

Eagles win season opener over #9 Troy Trojans 46-27

By TIM FLEISCHER
EDITOR-IN-CHIEF

Salado Eagles jumped out to an early lead, thanks to two three-and-out stops by the defense, and then never looked back, beating the #9 Troy Trojans 47-26 in the season opener at UMHB's Crusader Stadium Aug. 28.

The Eagles scored first after forcing Troy to a three-and-out series, on a 25 yard run by Caden Strickland with 7:58 left in the first. The run capped a 55-yard run. The PAT failed.

Salado defense stepped up for another three-and-out series. Reid Vincent ran between his blockers on the right side and then cut back at the Troy 40 to score a 75-yard touchdown with 5:11 left in the first. The PAT failed, giving Salado a 12-0 lead.

Troy answered on the first play from scrimmage when workhorse running back Zach Hrbacek took the ball 65 yards for a TD. He also converted the two-point try, making it 12-8 with 5:06 in the first.

Troy's defense then stepped up and forced a Sal-

ado punt from the Eagle 15. Troy took advantage of a short field and scored seven plays later on a 11 yard run by Hrbacek. The run capped a 47 yard drive. A successful kick gave Troy its only lead of the game, 15-12 with 11:06 left in the first half.

Salado answered quickly on a 59-yard run by Vincent, which followed his 16 yard run for a 75-yard scoring drive. Wrook Brown kicked the PAT for a 19-15 Salado lead with 10:28 in the first half.

The Eagles forced Troy to a three-and-out and a punt from their own 17 yard line. A personal foul against Troy on the return gave Salado the ball at the Trojan 27. Salado struggled to advance the ball and Hutton Haire was sacked for an 11 yard loss on third down. On fourth and 18, Haire perfectly hit Brown in stride on a flag route for a 35 yard TD. The PAT kick was good giving Salado a 26-15 lead.

Troy threatened to narrow the gap in the waning minutes of the half, but the Eagles defense stepped up in the red zone to force the Trojans to turn the ball over on downs.

The Eagles took more than six minutes to score on the opening drive of the second half. Hutton Haire followed his line into the endzone for a two yard sneak on a third down and goal to cap the 67 yard scoring drive. The drive took 13 plays, all on the ground. Brown kicked the PAT for a 33-15 lead.

Troy answered with a 74 yard touchdown run by Hrbacek with 5:12 left in the third. After a penalty, the PAT failed. Troy trailed 33-21.

Brown returned the kick past midfield. The Eagles drove 41 yards in five plays, scoring on a 6-yard Brown run with 2:42 left in the third. Brown missed the PAT, and the Eagles led 39-21.

Troy drove 70 yards in just over a minute, scoring on a 26 yard run by Hrbacek. Hrbacek almost scored on the first play following the kick, but Brown stopped him after a 44-yard run. Another penalty against Troy on the PAT caused it to fail, leaving the Trojans trailing 39-27 with 1:11 left in the third.

Two minutes later, Salado scored on a 28 yard run by Noah Mescher. The run capped a 72-yard, six-play drive that was all on the ground. Brown booted the PAT for a 46-27 lead with 10:44 left to play.

Salado's defense stiffened for the remaining two possessions for the Eagles to take the decisive ground-game win 46-27.

Hrbacek carried the Trojans on his back, scoring all four TDs and a two-point



Peyton Miller breaks up a pass to Troy's Jacob Smith during the Eagles 46-27 season opening win. (PHOTO BY ROYCE WIGGIN)

PAT. He had 322 yards on 27 carries.

Troy had 350 yards total offense, 21 passing yards and 329 rushing.

Salado had 487 yards on the ground and 39 yards passing. Reid Vincent led the Eagles with 236 yards on 16 carries, including touchdown runs of 75 yards and 59 yards. Noah Mescher followed with 173 yards rushing and two touchdowns. Caden Strickland had 73 yards and a touchdown.

Hutton Haire had a touchdown rushing and one passing.

Kofi Stoglin led the Eagles defense with 8 tackles, 2 tackles for loss, 3 assists and a pass broken up.

Lucas Morvant followed with 5 tackles, 3 assists, La-Trell Jenkins, 5 tackles, 1 TFL and 1 assist, and Wrook Brown, 5 tackles.

Ryan Poe had 3 TFLs, 1 tackle and an assist while causing a fumble.

Also registering tackles for the Eagles were Peyton Miller, 3 tackles and an assist, Joshua Huckabee, 2



Reid Vincent runs around Troy's Kadin Workman as he led the Eagles to a 46-27 win. (PHOTO BY ROYCE WIGGIN)

tackles and 4 assists, Ryan causing one fumble. Kory McBurney, 2 tackles, Greg Walker, 1 tackle, 1 assist. Washington, 1 tackle and KC Perkins had an assist.

NOW ENROLLING
KIDS' ZONE
Learning Center
104 Copper Lane, Jarrell 512-746-2333
105 Western Sky Trail, Jarrell 512-598-3900
4802 Moreland Drive, Georgetown 512-868-8300
FAMILY-OWNED CHILDCARE CENTERS
SERVING AGES 0 TO 12 YEARS
CHILDREN ARE A GIFT FROM GOD -PSALM 127:3

Brody's Mill Creek Clubhouse
OPEN TO THE PUBLIC
Sun - Mon 7 a.m. - 6:30 p.m.
Tues - Thurs 7 a.m. - 8 p.m.
Fri - Sat 7 a.m. - 9 p.m.
Dine-in or call for Carry Out
(254) 654-7885

27 unforgettable holes of Golf designed by Robert Trent Jones, Jr.
MillCreekGolf27.com
(254) 947-5698
MILL CREEK
Country Club
Book Your Tee Time Today
OPEN TO THE PUBLIC
Practice Facility Memberships Available

SISD enrollment tips 2,076 week before Sept. 8 return

A week before the first day of school, Salado ISD enrollments are slightly ahead of the first day of school enrollment for 2019, with 2,076 students enrolled for the 2020-21 school year. Students return to class on Sept. 8.

Thomas Arnold Elementary school has 931 students spread across its Early Education through fifth grade students. The new Salado Middle School has 487 students in sixth through eighth grade. Salado High School has 658 students enrolled in ninth-12th grades.

SHS has more than 10% of its students who chose to attend remotely with 81 students. The Middle School has more than 15% of its students opting for remote learning with 70 students. Thomas Arnold Elementary will have 152 students, also more than 15%, attending remotely for the beginning of school.

Salado ISD Enrollment Comparison by grade

	2020-21	2019-20	
THOMAS ARNOLD: 931		TAE 931	
EE	0	EE	1
PK 3	12	PK3	21
PK 4	41	PK4	20
Kindergarten	130	Kindergarten	114
1st grade	111	1st grade	133
2nd grade	147	2nd grade	137
3rd grade	143	3rd grade	153
4th grade	162	4th grade	173
5th grade	177	5th grade	159
SALADO MS 487		SALADO JR HI 476	
6th grade	164	6th grade	138
7th grade	146	7th grade	164
8th grade	77	8th grade	174
SALADO HS 658		SALADO HS 629	
9th grade	179	9th grade	170
10th grade	167	10th grade	142
11th grade	149	11th grade	171
12th grade	162	12th grade	145
18 +	1	18+	1

Salado's Hair Shop
Full Service Salon
(254) 421-5173
213 Mill Creek Dr., Suite 160
Gift Certificates make great gifts
Credit Cards Accepted

Ace
Pest and Lawn
Customer Satisfaction Guaranteed
Free Estimates
947-4222
Locally Owned and Operated
Licensed by the Structural Pest Control Board TPCL #12512

CENTURY 21 WWW.C21BB.COM
Bill Bartlett
860 N. MAIN - SALADO, TX
254.947.5050
Good Luck from your 'Home' Team

Hoping to stop skid, Ladies head to Llano for dual match

Heading into a dual match in Llano on Aug. 29, the Salado Lady Eagles had lost five of their last six. The girls were eager to get back in the W column after a tough loss at home in five sets to Gatesville Aug. 26.

Unfortunately in game one of the dual match, Salado would fight but come up short, losing to Devine in five sets (16-25, 25-19, 27-25, 18-25, 13-15). Senior right side hitter Amy Manning would have her best match of the season collecting 14 kills.

Game two of the day would be a different story. Salado handled the Lady Jackets of Llano with relative ease in straight sets (25-11, 26-24, and 25-16). Senior Libero Megan Manibusan would frustrate the Llano offense with 21 digs in the match. Freshmen Reese Rich and Sophomore Katey Bartek stepped into some big roles after the Lady Eagles were down several players.

On Aug. 26, Salado

would play some of their best volleyball through the first two sets of their home match against Gatesville before the inexperience of a young team would show.

The Lady Eagles downed the Hornets of Gatesville in the first two sets 25-19 and 25-21. Confidence and energy from Gatesville would keep them in the game as they stormed back to win the third and fourth sets with scores of 17-25 and 22-25 to force a fifth set.

Salado would get first blood with a big kill from Lainey Taylor, but it would be all Gatesville after that with a final set of 8-15.

Junior Varsity

The Lady Eagle JV squad had an outstanding performance in Llano on Aug. 29 defeating both Devine (25-10, 23-25, 25-18) and Llano (25-17, 25-27, 25-20). Jordan Ferguson's leadership and defense led the way for the girls along with Freshmen setter Paige Farris' 14 assists. Emma Grant would contribute 12 kills on the af-

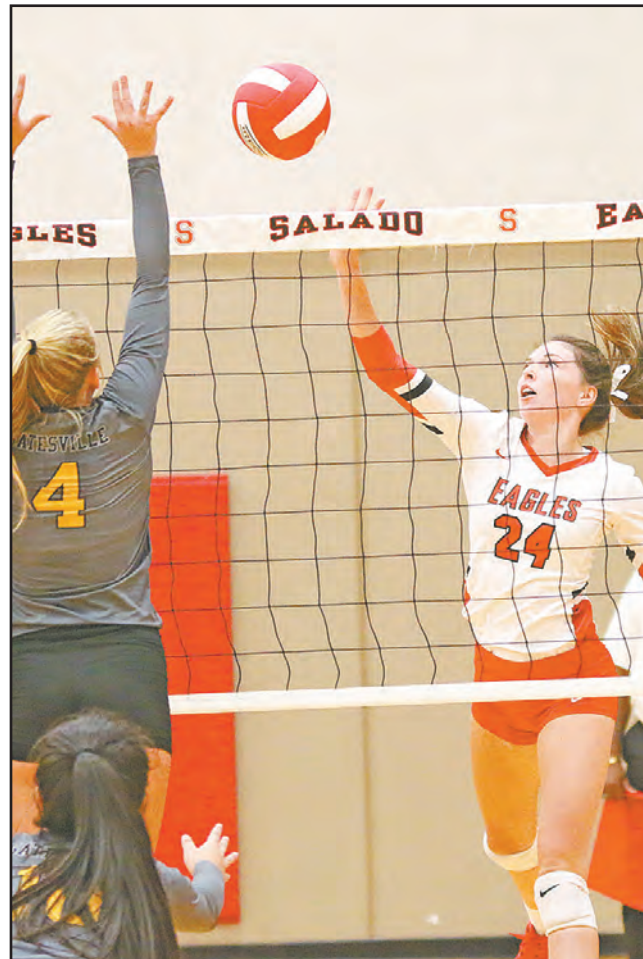
ternoon as well.

The JV squad came away with the lone match victory in the home contests against Gatesville Aug. 26. After falling behind 19-23, they came back with a vengeance to win 25-23. Gatesville wouldn't belong on the same court in the second set with Salado cruising to a 25-15 victory.

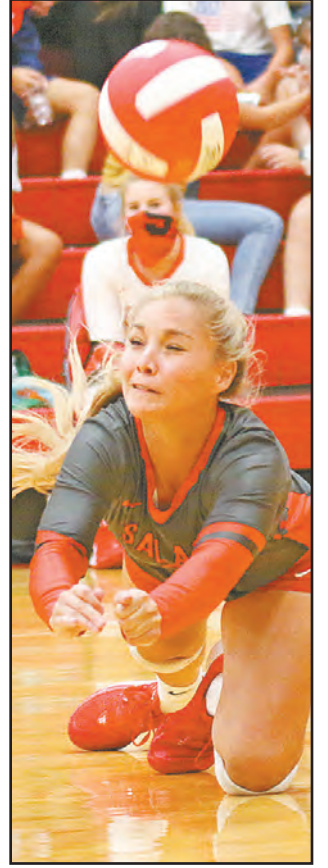
Freshmen

Salado's youngest squad struggled in their Aug. 29 dual match opener against Devine dropping the match in straight sets (22-25, 6-25), but they would find success in the second match crushing Llano with scores of 25-14 and 25-11. Grace Clemons would have an all around great day as well as Kaelyn Houston stepping in to lead a new 5-1 offense due to injuries. Strong serving led by Pazlee Conrad would overwhelm Llano passers all afternoon.

The Freshmen squad lost their home match against Gatesville Aug. 26 in straight sets (13-25, 14-25).



Lainey Taylor puts a shot over the net during the Lady Eagles' loss to Gatesville. For more photos visit salado-villagevoice.com (PHOTO BY ROYCE WIGGIN)



(PHOTO BY ROYCE WIGGIN) Megan Manibusan gets low to dig the ball during Salado's five set loss to the visiting Gatesville Lady Hornets.



Salado Family and Cosmetic Dentistry

Preventive care for children and adults
Teeth whitening | Implant Restoration
Veneers & Cosmetic Crowns
Conscious & Full Sedation Dentistry Available

Douglas B. Willingham, D.D.S.
(254) 947-5242
SaladoFamilyDentistry.com
in the historic Armstrong Adams House c. 1868

2 North Main Street at Thomas Arnold Road



WE BUY SCRAP GOLD & SILVER

BUY SELL TRADE

Gold, Silver, Coins, Currency & Jewelry
(254) 699-2646
Locally Owned - Salado Resident

Texas Coin Connection
108 E FM2410, Suite G - Harker Heights

BACK OR NECK PAIN?
WE CAN HELP!

Integrity
REHAB

Most Insurances Accepted!
213 Mill Creek Dr., #195, Salado
IntegrityRehab.net
254.699.3933



Talavera Mexican Pottery

"Every piece one of a kind"

New Metal Yard Art
Bouquets
Blooming Plants
Arrangements



SALADO CLEANERS

Laundry · Dry Cleaning · Alterations



1209 N. Stagecoach
(Next to the Library)
254-947-7299

7 a.m. - 7 p.m. Mon - Fri • 7 a.m. - 3 p.m. Sat

Wash & Fold



Devereaux Jewelers

254-771-1260
DEVEREAUXJEWELERS.COM



Brookshire Brothers

Floral Department 947-8922



DONRINGLERTOYOTA.COM | 254-774-6500
EXIT 294B OFF I-35 BETWEEN BELTON AND TEMPLE

DON RINGLER
TOYOTA
FAMILY PLAN
\$3,000 ADVANTAGE

COMPLIMENTARY WITH EVERY NEW VEHICLE PURCHASE! (1)



24/7 ROADSIDE ASSISTANCE



WINDSHIELD REPAIR



PAINTLESS DENT REPAIR



KEY & REMOTE RECOVERY REPLACEMENT



INTERIOR DAMAGE REPAIR



OWNER REWARDS PROGRAM



LOANER CARS



GET
2 YEARS
NO COST
MAINTENANCE (2)

(1) Family Plan is complimentary for 1 year. Option to purchase extension is available. The new vehicles cannot be part of a rental or commercial fleet, company vehicle or livery/taxi vehicle. (2) ToyotaCare covers normal factory scheduled service for 2 years or 25,000 miles, whichever comes first. See Toyota dealer for details and exclusions. Valid only in the continental U.S. and Alaska.

New SHS teachers

Several new teachers will greet Salado High School students when they return to campus on Sept. 8.



JENNY CARROLL

Teacher's Education and Certifications: Boise State University-Bachelor of Arts History and Special Education

Teaching Experience: 13 years

Subjects and Grade Levels: Life Skills High School

Why a Teacher?: I became a teacher because I love being part of educating the future of America!



JACQUILINE FRANKS

Education and Certifications: Bachelors of Science in Math and Education from Western Oregon University, Currently hold Certifications for 4-8 Generalist and K-12 Special Education

Teaching Experience: 1 year

Subjects and Grade Levels: Geometry/Algebra II

Why a Teacher?: Growing up I always viewed my teachers as role models to me and my friends. When I was choosing my degree path I wanted to follow in that career path so that I could be a role model for students. I thrive in an environment where I can help students realize and help them work to their full potential.



JADA KORNEGAY

Teacher's Education and Certifications: Bachelor's in Health Information Management

Teaching Experience: None

Subjects and Grade Levels: 9-12

Why a Teacher?: My grandfather taught for 50 years and always told me stories about how rewarding teaching can be. His stories are what inspired me to now become a teacher.

Extra-curricular activities: Volunteer Boys/Girls Basketball



DIANNE LEMUS

Teacher's Education and Certifications: Special Education and Spanish

Teaching Experience: 6 years in education

Subjects and Grade Levels: Spanish I and 2 (9-12 graders)

Why a Teacher?: This has been a dream of mine for many years now, and I am very excited that my dream has finally come to fruition. I truly love working with children. When you invest time working with students and you see them have that "aha" moment is when it makes everything you do worthwhile.



TYLER TANGUAY

Teacher's Education and Certifications: Bachelor of Science in Agricultural Economics from Tarleton State University and certified in Agriculture, Food & Natural Resources grades 6-12

Teaching Experience: 2 years prior experience

Subjects and Grade Levels: Agriculture, Food & Natural Resources emphasizing in Agricultural Mechanics grades 10th - 12th

Why a Teacher?: I became a teacher specifically teaching agricultural mechanics because I wanted to share my passion of building projects and working with my hands to future generations. We have seen a decrease in students be-

ing able to work in a shop setting with their hands and build an item from planning to a finished project. We have seen an increase of job opportunities in the industry that require skilled workers that will need to be filled in the coming years. I want to give my students options and opportunities that will last them far beyond when they leave Salado High School and my classroom.

Extra-curricular activities: FFA Advisor



RANDALL VINCENT

Teacher's Education and Certifications: Hardin Simmons University Graduate; English Major, Coaching Minor

Teaching Experience: first year

Subjects and Grade Levels: English II 10th Grade

Why a Teacher?: Coaching and Teaching at the HS level is always something that I have wanted to do. I come from a family full of educators, meaning I have been around the education system my entire life. Using sports to build students into great young men and women has always been a dream of mine. Blessed to be able to get that started in Salado.

Extra-curricular activities: Football and Baseball

Eagles host #2 Grandview

Salado Eagles will host the #2 Grandview Zebras at 7:30 p.m. Sept. 4. The Zebras are coming off a 31-24 overtime win over the Malakoff Tigers in week one, while Salado had a decisive win over the #9 Troy Trojans (3A, Div. 1). The Zebras are back-to-back state champions in 3A, Div. 1., where they beat the previously undefeated Pottsboro Cardinals 42-35.

The Zebras only loss last year was in district play to Whitney. The Zebras are 30-3 since 2018.

Salado was the third place team in District last year and lost to Texarkana Pleasant Grove, two-time state Champion in 4A, Div. 2 football, in the Area round.

The Eagles return seven offensive starters and seven defensive starters from that team.

Four of those starters will anchor the offensive line that leads the way for the powerful Salado slot-T running game: Center Bryce Dobbins, tackles Avery Womack and end Nick Sibbitt. Kade Maedgen also started last year on offense. Returning starters in the



Wrook Brown gets to the end zone for a 35-yard Touchdown reception against Troy. (PHOTO BY ROYCE WIGGIN)

backfield are quarterback Hutton Haire and tailback Reid Vincent, who carried the ball 136 times for 1,250 yard and seven TDs as a junior. Joining the line are Aiden Wilson, quick guard and KC Perkins, strong guard. Caden Strickland and Noah Mescher will also carry the ball in the backfield for Salado.

Returning defensive starters are Greg Washington (98 tackles, 3 tackles for loss, 2 caused fumbles, 2 fumble recoveries); Peyton Miller (80 tackles, 11 TFLs, 6 sacks, 3 caused fumbles, 2 fumble recoveries); Kofi

Stoglin (80 tackles, 5 TFLs, 2 caused fumble, 3 fumble recoveries, 2 sacks); Lucas Morvant (83 tackles, 4 TFLs, 1 sack, 2 fumble recoveries) Latrell Jenkins (50 tackles, 4 pass break-ups, 5 interceptions, 2 fumble recoveries); Kory Walker and Ryan Poe.

Joining them on defense are Blake Volk, Braydon Summers, Peyton Miller, Nolan Williams, Josh Huckabee and Wrook Brown.

Coach Alan Haire is in his fifth year at his alma mater Salado. He has a 32-17 record in Salado and an overall record of 116-86.

MONTEITH
Abstract & Title Company

Salado, Texas
(254) 947-3922

Hillary Glossup - Branch Manager/ Escrow Officer

Experience ▲ Family ▲ Integrity

THE PERSONAL WEALTH COACH

Family Wealth Management
An SEC Registered Investment Adviser

Jeffery W. McClure, CFP®

Jacob A. McClure, CIMA®

Serving Investors Since 1982

P.O. Box 1029 | 918 N. Main St., Salado, Texas 76571 947-1111 or 1-800-914-7526

www.thepersonalwealthcoach.com

Don't think of it as a
WORKOUT.
Think of it as
Happy Hour.

**ANYTIME FITNESS
SALADO**

*Each location is independently owned and operated. ©2018 Anytime Fitness, LLC Expires 12/31/2020

213 Mill Creek Dr. Suite 155, Salado, TX 76571
254-947-1063
anytimefitness.com

TROY L. SMITH FINANCIAL

Offering general securities through HilltopSecurities Independent Network Inc.
Member: FINRA/SIPC

OFFICE: (254) 947-0376

TROYLSMITH.COM

101 Salado Plaza Drive
Salado, Texas 76571

Call me today for
a no-obligation
quote!

254.947.0995

Rita Zbranek
Your Local Farmers Agent

40 S. MAIN ST.
SALADO, TX 76571
RZBRANEK@FARMERSAGENT.COM

FARMERS
INSURANCE

2020-2021 Salado ISD Bus Routes

ROUTE 1 AM Driver Louis Williams

Lv Transportation	6:15 AM
Rose Ln (West of Satch Dr.)	6:19 AM
Satch Dr & Rose Lane	6:20 AM
Capps Branch Rd & Rose Ln	6:21 AM
Stinnett Mill & Rose Ln	6:23 AM
East Amity Road	6:27 AM
9370-9850 Stinnett Mill	6:31 AM
10195-11200 Stinnett Mill	6:33 AM
1031 Ferguson Mill Rd	6:36 AM
Ferguson Mill Rd & TH Jones Mill Way	6:37 AM
S. Yellow Rose & Rose Ln	6:39 AM
N. Yellow Rose & Rose Ln	6:39 AM
Ranger Blvd & Rose Ln	6:40 AM
Hamer Dr & Rose Ln	6:42 AM
6115 Miller Ln (Heritage Sub Division)	6:51 AM
8631 Fox Road	6:55 AM
Elmer King Rd & Elmer King Lp	6:59 AM
221 Elmer King Rd (200-500)	7:03 AM
3366 FM 2484(Accents of Salado)	7:10 AM
SHS Drop Off	7:12 AM
SMS Drop Off	7:15 AM
TAE Drop Off	7:21 AM

Route 2 AM Driver Ninfa Expinoza

AM ROUTE	
Lv Transportation	6:00 AM
Kuykendall Branch Rd	6:05 AM
18301 Kuykendall Branch Rd	6:07 AM
Solana Ranch Road	6:17 AM
Prairie Dell Rd & Prairie Dell Church Rd	6:24 AM
Prairie Dell Rd (21120 IH35 Stop)	6:26 AM
Puma Rd & Hill Road -turn around	6:31 AM
Hill Rd	6:32 AM
Hare Rd	6:33 AM
21140 Horned Frog Rd	6:36 AM
I-35 Frontage Rd (North before FM 2115)	6:46 AM
FM 2115	6:49 AM
Hackberry Rd & Gravel Access	6:52 AM
Gooseneck Rd & Hare Rd (turn around)	6:54 AM

5:06 PM	
Gooseneck Rd (Lindemann) - turn around	7:01 AM
Hackberry Rd- turn around	7:07 AM
Gooseneck Rd - Towards FM 2268	7:13 AM
SHS Drop-off	7:28 AM
SMS Drop-off	7:30 AM
TAE Drop-off	7:33 AM
Arv Transportation	7:34 AM

ROUTE 3 AM Driver Jay Killingsworth

Lv Transportation	6:00 AM
Wells Land & FM 2843	6:07 AM
7602 FM 2843	6:11 AM
Hidden Spgs Drive	6:13 AM
Long Meadow	6:15 AM
Creekview Dr.	6:18 AM
Pin Oak Trl & Creekview Dr.	6:19 AM
Creekview Dr.	6:20 AM
1193 Cheyenne Pass	6:24 AM
Trails End	6:26 AM
Mission Trail	6:32 AM
Shady Oaks Ln.& Hidden Spgs Dr.	6:39 AM
Mustang Creek Rd	6:42 AM
Cedar Valley Rd	6:51 AM
Abott Spgs Ln & FM 2843	7:01 AM
15480 FM 2843	7:01 AM
County Ln & FM 2843	7:02 AM
14337 FM 2843	7:05 AM
13139 FM 2843	7:07 AM
Buttermilk Ln & FM 2843	7:09 AM
9075 FM 2843	7:13 AM
7689 FM 2843	7:16 AM
Eagle Rock & FM 2843	7:19 AM
TAE Drop-off	7:29 AM
SMS Drop-off	7:36 AM
SHS Drop-off	7:40 AM
Arv Transportation	7:46 AM

Route 4 AM Driver David Stanford

Lv Transportation	6:25 AM
Oak Park & FM 2268	6:28 AM
Laly Ln & FM 2268	6:30 AM
Shepherd Ln & FM 2268	6:31 AM
602 Palomino Trl & FM 2268	6:32 AM
Praire Ln & FM 2268	6:35 AM
Blackberry(between FM2268 & Royal)	6:36 AM
Great Oaks & Blackberry	6:36 AM
Royal (east end past Blackberry)	6:39 AM
Berry Dr. & Spanish Oak Ln	6:40 AM
Betty Pl. & Spanish Oak Ln	6:41 AM
Amanda Dr. & Spanish Oak Ln	6:41 AM
Deer Xing & Royal	6:42 AM
Doves Landing Ct & Royal	6:44 AM
Armstrong Rd (between Royal & Suphur Wells)	6:49 AM
Royal	4:21 PM
Sulphur Wells Rd	6:53 AM
The Creeks SubDivision	6:55 AM
Blackberry (north end past Royal)	6:57 AM
1351 Awesome Ave	7:01 AM
Grandview & Woodland Bend	7:06 AM
Hester Way & Park View Dr	7:08 AM
Hester Way & Logan Ct.	7:09 AM
Royal St (frm Blackberry to Rose Way)	7:12 AM
TAE Drop-off	7:19 AM
SMS Drop-off	7:25 AM
SHS Drop-off	7:28 AM
Arv Transportation	7:34 AM

Route 5 AM Driver Donna Zelisko

Lv Transportation	6:15 AM
Salado Plaza Drive	6:18 AM
South Rodge & Park Dr.	6:21 AM
Park Dr.	6:26 AM
Blaylock Dr. & Blaylock Cr.	6:28 AM
Indian Trl. & Blaylock Dr.	6:28 AM
Quail Hollow Dr. & Indian Trl	6:31 AM
Ridgecrest Dr. & Indian Trl	6:31 AM
609 Willow Creek	6:32 AM
Old Mill Rd & Willow Creek	6:33 AM
1117 South Ridge	6:34 AM
600 Whispering Oaks Drive	6:35 AM
Indian Trail	6:37 AM
Bishop & Old Mill Rd	6:40 AM
Highland & Kevlin	6:42 AM
Smith Bluff Rd & Chisholm Trl	6:43 AM
Smith Bluff Rd & Smith Bluff Way	6:45 AM
Jack Nicklaus Cir & Winners Cir.	6:48 AM
Arnold Palmer Cir & Winners Cir.	6:49 PM
Hester Way & Walker Cir.	6:50 PM
3306 Chisholm Trl.	6:52 AM
OW Lowrey & Chisholm Trl	6:53 AM
Tallwood & OW Lowrey	6:55 AM
OW Lowrey	6:56 AM
Chisholm Trl (N. of OW Lowrey)	6:59 AM
Stagecoach & Chisholm Trl	7:02 AM
Creek Run Cir & 1200 Chisholm Trl	7:03 AM
SHS	7:10 AM
SMS	7:17 AM
TAE	7:22 AM
Arv Transportation	7:27 AM

Route 6 AM Driver Clarence Morris

Lv Transportation	6:27 AM
Andre Lp & FM 3481 (Killeen MHP)	6:40 AM
Lane Lp & FM 3481	6:41 AM

Route 1 PM Route

TAE Leave	3:50 PM
SMS Leave	4:00 PM
SHS Leave	4:07 PM
Rose Ln (West of Satch Dr.)	4:10 PM
Satch Dr & Rose Lane	4:12 PM
Capps Branch Rd & Rose Ln	4:12 PM
Stinnett Mill & Rose Ln	4:13 PM
S. Yellow Rose & Rose Ln	4:14 PM
N. Yellow Rose & Rose Ln	4:16 PM
Ranger Blvd & Rose Ln	4:16 PM
Hamer Dr & Rose Ln	4:17 PM
East Amity Road	4:24 PM
9370-9850 Stinnett Mill	4:27 PM
10195-11200 Stinnett Mill	4:31 PM
1031 Ferguson Mill Rd	4:34 PM
Ferguson Mill Rd & TH Jones Mill Way	4:35 PM
Tribute Ln (Heritage Sub Division)	4:41 PM
Worth Ln & Miller Ln (Heritage)	4:43 PM
6115 Miller Ln (Heritage Sub Division)	4:44 PM
8631 Fox Road	4:48 PM
Elmer King Rd & Elmer King Lp	4:52 PM
493 Elmer King Rd (On Curve)	4:54 PM
221 Elmer King Rd (200-500)	4:56 PM
3366 FM 2484(Accents of Salado)	5:02 PM
Arv Transportation	5:07 PM

Route 2 PM Driver Ninfa Expinoza

TAE Leave	3:50 PM
SMS Leave	3:57 PM
SHS Leave	4:02 PM
Kuykendall Rd	4:11 PM
Solana Ranch Road	4:20 PM
Prairie Dell Rd/Prairie Dell Church Rd	4:27 PM
Hill Rd & Puma Rd -turn around	4:35 PM
Hill Rd	4:36 PM
Hare Rd	4:36 PM
21140 Horned Frog Rd	4:40 PM
I-35 Frontage Rd (North of FM2115)	4:48 PM
FM 2115	4:49 PM
Hackberry Rd & Gravel Access	4:53 PM
Gooseneck Rd & Hare Rd - Turn around	4:55 PM
Gooseneck Rd - towards Lindemann - turn around	

Hackberry Rd-turnaround	5:13 PM
Gooseneck Rd - towards FM 2268	5:17 PM
Arv Transportation	5:30 PM

Route 3 PM Driver Jay Killingsworth

TAE Leave	3:50 PM
SMS Leave	3:57 PM
SHS Leave	4:02 PM
Wells Land & FM 2843	4:12 PM
7602 FM 2843	4:16 PM
Hidden Spgs Drive	4:18 PM
Long Meadow	4:20 PM
Creekview Dr.	4:23 PM
Pin Oak Trl & Creekview Dr.	4:24 PM
Creekview Dr.	4:24 PM
1193 Cheyenne Pass	4:28 PM
Trails End	4:30 PM
Mission Trail	4:37 PM
Shady Oaks Ln.& Hidden Spgs Dr.	4:43 PM
Mustang Creek Rd	4:47 PM
Cedar Valley Rd	4:56 PM
Abott Spgs Ln & FM 2843	5:05 PM
15480 FM 2843	5:06 PM
County Ln & FM 2843	5:06 PM
14337 FM 2843	5:10 PM
13139 FM 2843	5:12 PM
Buttermilk Ln & FM 2843	5:14 PM
9075 FM 2843	5:18 PM
7689 FM 2843	5:21 PM
Eagle Rock & FM 2843	5:24 PM
Arv Transportation	5:35 PM

PM ROUTE

TAE Leave	3:50 PM
SMS Leave	3:57 PM
SHS Leave	4:02 PM
Oak Park & FM 2268	4:08 PM
Laly Ln & FM 2268	4:10 PM
Shepherd Ln & FM 2268	4:11 PM
602 Palomino Trl & FM 2268	4:12 PM
Praire Ln & FM 2268	4:14 PM
Blackberry(between FM2268 & Royal)	4:15 PM
Great Oaks & Blackberry	4:16 PM
Royal (east end past Blackberry)	4:18 PM
Berry Dr. & Spanish Oak Ln	4:19 PM
Betty Pl. & Spanish Oak Ln	4:20 PM
Amanda Dr. & Spanish Oak Ln	4:20 PM
Deer Xing & Royal	4:22 PM
Doves Landing Ct & Royal	4:22 PM
Armstrong Rd (between Royal & Suphur Wells)	4:26 PM
658 Via Lago	4:33 PM
Sulphur Wells Rd	4:35 PM
The Creeks SubDivision	4:38 PM
Blackberry (north end past Royal)	4:40 PM
1351 Awesome Ave	4:44 PM
Grandview & Woodland Bend	4:49 PM
Hester Way & Park View Dr	4:50 PM
Hester Way & Logan Ct.	4:51 PM
Royal St (frm Blackberry to Rose Way)	4:54 PM
Arv Transportation	5:02 PM

Route 5 PM

TAE Leave	3:50 PM
SMS Leave	3:57 PM
SHS Leave	4:02 PM
Salado Plaza Drive	4:07 PM
South Rodge & Park Dr.	4:10 PM
Park Dr.	4:13 PM
Blaylock Dr. & Blaylock Cr.	4:14 PM
Indian Trl. & Blaylock Dr.	4:15 PM
Quail Hollow Dr. & Indian Trl	4:17 PM
Ridgecrest Dr. & Indian Trl	4:17 PM
609 Willow Creek	4:18 PM
Old Mill Rd & Willow Creek	4:19 PM
1117 South Ridge	4:19 PM
600 Whispering Oaks Drive	4:21 PM
Indian Trail	4:21 PM
Bishop & Old Mill Rd	4:24 PM
Highland & Kevlin	4:25 PM
Smith Bluff Rd & Chisholm Trl	4:26 PM
Smith Bluff Rd & Smith Bluff Way	4:28 PM
Jack Nicklaus Cir & Winners Cir.	4:31 PM
Arnold Palmer Cir & Winners Cir.	4:31 PM
Hester Way & Walker Cir.	4:32 PM
Ambroise Drive & Mackie Dr.	4:33 PM
3306 Chisholm Trl.	4:37 PM
OW Lowrey & Chisholm Trl	4:38 PM
Tallwood & OW Lowrey	4:40 PM
OW Lowrey	4:40 PM
Chisholm Trl (N. of OW Lowrey)	4:43 PM
Stagecoach & Chisholm Trl	4:47 PM
Creek Run Cir & 1200 Chisholm Trl	4:47 PM
Arv Transportation	4:53 PM

Route 6 PM Driver Clarence Morris

TAE Leave	3:50 PM
SMS Leave	3:57 PM
SHS Leave	4:02 PM

Turn ard (PU Homestead Dr)	6:42 AM
Pirtle Rd & FM 3481	6:42 AM
Jewel Ln & FM 3481	6:43 AM
FM 2484 (North side)	6:44 AM
12796 FM 2484(Acrsss frm Eagles Nest)	6:44 AM
15026 FM 2484	6:47 AM
Ebertowski's Tr Park	6:48 AM
Turn Around	6:53 AM
FM 2484 (South side)	6:56 AM
13085 FM 2484 (South side)	7:00 AM
Eagles Nest	7:01 AM
10635 Crow's Ranch Rd	7:10 AM
SHS	7:16 AM
SMS	7:18 AM
TAE	7:21 AM
Arv Transportation	7:23 AM

Route 7 AM Driver Kyra Mann

Lv Transportation	6:55 AM
Salado Hts (North side)	7:00 AM
Tranquil Gardens RV Park	7:03 AM
Sam Neil FM 2484	7:03 AM
Beau Allen Ct & FM 2484	7:04 AM
Brewer & FM 2484(Trn Ard)	7:04 AM
La Paloma Lp(West)	7:06 AM
La Paloma Lp (East)	7:08 AM
Ridgewood & FM 2484	7:10 AM
Irene Ln & FM 2484	7:11 AM
Salado Hts (South side) & FM 2484	7:13 AM
SHS Drop-off	7:15 AM
SMS Drop-off	7:17 AM
TAE Drop-off	7:20 AM
Arv Transportation	7:22 AM

Route 8 Driver: AM - Charla Kelley

Lv Transportation	6:55 AM
Center Cr. & Salado Crk Plza	6:58 AM
Royal & Table Rock	6:59 AM
Rose Way & Royal(trn ard)	7:00 AM
Baines Street	7:00 AM
Table Rock & Baines St.	7:01 AM
Santa Maria & Baines St.	7:02 AM
Santa Clara & Baines St.	7:02 AM
San Pedro & Baines St.	7:03 AM
Santa Rosa & Baines St.	7:03 AM
Chelsea & FM 2268	7:04 AM
Guess Dr. & FM 2268	7:04 AM
Salado Oaks Dr.	7:04 AM
FM 2268 N side (Baines to IH35)	7:07 AM
College Hill Dr	7:09 AM
Main St. (400's S. To 400's N.)	7:10 AM
Rock Creek & Main St.	7:11 AM
Van Bibber Rd & Main St.	7:11 AM
Carriage House & Main St.	7:12 AM
Main St. (500's to 900's N)	7:12 AM
Van Bibber & Creekside (trn ard)	7:14 AM
Mill Creek Dr. (500's to 1600's)	7:15 AM
DeGrummand Drive	7:16 AM
Mill Creek Dr. (Duplexes by Brookshires)	7:17 AM
TAE Drop-off	7:21 AM
SMS Drop-off	7:24 AM
SHS Drop-off	7:26 AM
Arv Transportation	7:30 AM

Route 9 AM Driver Vickie Bartos

AM ROUTE	
Lv Transportation	
Brewer Rd (South of FM 2484)	6:36 AM
Brewer Rd & Brewer Meadows	6:39 AM
Brewer Rd	
(North of FM 2484,South of Lacey Lou)	6:40 AM
Brewer Rd & Lacey Lou	6:40 AM
Brewer Rd (North of Lacey Lou)	6:42 AM
Brewer Rd & West Amity	6:43 AM
Brewer Ln	6:46 AM
Amity West (West of Norwood Drive)	6:51 AM
Norwood Drive	6:52 AM
Amity West (East of Norwood Drive)	6:53 AM
FM 1670(North of W. Amity)	6:59 AM

SHS Drop-off	7:11 AM
SMS Drop-off	7:14 AM
TAE Drop-off	7:21 AM
Arv Transportation	7:22 AM

Route 10 AM Driver: Ashton Cooper

Lv Transportation	6:10 AM
FM 2484 (North side west Brewer 7400s)	6:15 AM
Rocking H Rd	6:18 AM
Live Oak	6:20 AM
Live Oak & Scenic Lakeview Dr. (Trn Ard)	6:22 AM
Hodge Canyon & Rocking H Rd	6:23 AM
Hodge Canyon(south of Rocking H Rd.)	6:24 AM
FM 2484 (North side 8000's-Southshore)	6:26 AM
Southshore Dr.	6:31 AM
S Bend Rd	6:32 AM
Southview Dr & S Bend Rd	6:33 AM
S Bend Rd & Southshore Dr.	6:35 AM
Cedar Knob Church Rd.	6:38 AM
FM 2484 (North side to FM 3481)	6:42 AM
FM 2484 (South side to Presa.)	6:45 AM
FM 2484 & Windy Hill Rd	6:47 AM
Presa Dr. & Vista Dr.	6:50 AM
FM 2484 (Presa to Oak Ree Dr.)	6:53 AM
Oak Tree Dr	6:54 AM
Salado Spgs Dr	6:57 AM
FM 2484(Salado Spgs. To Brewer)	7:01 AM
Trusting Ln	7:02 AM
Spring Creek Estates	7:04 AM
SHS	7:09 AM
SMS	7:13 AM
TAE	7:19 AM

Route 11 AM Driver Terrell Simmons

Leave Transportation:	6:40 AM
MaryLane & Stagecoach Dr.	6:43 AM
IH-35 Service Road North	6:48 AM
Tollbridge Rd (I35 to Elmer King Rd)	6:49 AM
Tahuaya Road	6:52 AM
Smith Dairy Road (North of Meadow Cv)	6:54 AM
Meadow Cv & Smith Dairy Rd (PU Meadow Cv & Meadow Ln)	6:56 AM
Smith Dairy Road (South of Meadow Cv)	6:57 AM
Lark Trail (1st driveway)	7:00 AM
Saint Matthew	7:00 AM
Saint Mark	7:01 AM
Saint Luke	7:02 AM
(3111 & up) West Amity to FM1670	7:03 AM
Joe Bozon Dr & Big Brooke Dr.	7:05 AM
Big Brooke Dr.	7:06 AM
Few Oaks Dr. & Big Brooke Dr.	7:06 AM
Green Creek Dr. & Big Brooke Dr.	7:07 AM
Green Creek Dr. (Big Brooke Dr.-Few Oaks)	7:07 AM
Few Oaks Dr. & Green Creek Dr.	

Salado Village Guide

Section C • Marketplace, Dining, Overnight, Events • saladovillagevoice.com • September 3, 2020



The log cabin at Stagecoach Inn will be part of the next stage of renovations on the complex. (PHOTO BY CHARLENE CARSON)

What's the story with that old cabin on Main in front of Stagecoach

By CHARLENE CARSON
LOCAL HISTORIAN

Visitors to Salado and locals alike have often wondered, "What is the story behind the log cabin on Main Street in front of the Stagecoach Inn?" Keep reading and you will learn the story of that cabin as told by C.B. and Mary Hodge.

At one time, this log cabin, built in the 1800s, sat on the Claude and Bernice Hodge Ranch, which was about two miles west of Salado on Thomas Arnold Road. In the early 1930s, it was occupied by a Mexican family who worked on the ranch cutting wood.

In about 1934, Claude Hodge gave the cabin to Charles and Eva Stevens who owned the Stagecoach Inn at the time, and the Mexican family moved into another house on the ranch. The Stevens set up a restaurant in the cabin with the intentions of attracting travelers going to the 1936 Centennial in Dallas via old Highway 81. Everyone traveling Highway 81 would pass right in front of the cabin and hopefully stop for lunch.

Eva Stevens served what

she called "depression food," which consisted of fresh fish, fried chicken, black-eyed peas, and other homemade dishes. The meals were served family style and cost 35 cents. The cabin served as Salado's restaurant for several years.

The cabin, which had been put together with ashes, was dismantled, hauled by wagon and team to downtown Salado and reassembled at its present site. Originally it had a dirt floor and a tree was growing through the ceiling.

In the 1980s this log cabin was used as the Stagecoach Inn gift shop. Through the years it has been used as a coffee shop, barber shop, beauty shop, and a home décor shop. When Dion and Ruth Van Bibber became owners of the Stagecoach Inn in 1943, Van Bibber used the cabin as his office.

The current ownership has future plans for the building.

"We have discussed a number of different options for the cabin which will probably happen in the next construction phase of our project," David Hayes told Salado Village Voice.

"The cabin needs significant repairs as so much of the restaurant and hotel did, and we have some ideas that we think will make the cabin look better and be functional."

"We will probably use it for retail sale of stagecoach merchandise, but we have also talked about opening it up and using it as an access point to the garden below the cabin," he added.

Stagecoach Inn continues to undergo a multi-million dollar, multi-phase renovation and revisioning of the complex.

"We just finished a conference room we call the Longhorn room, we have just started construction on the Pavilion where the coffee shop was, it will have a fireplace, bar and restrooms," Hayes said. "We are also building a mineral pool in between buildings 2 and 3."

"We are excited about the completion of Main Street and ready to get past COVID," he said.

Meanwhile, the cabin sits on Main Street as a reminder of the rustic charm and the country style of living found in the village of Salado.

Record Breaking Year for Salado Winery

Salado, TX --- 2020 may not be a favorite year for some, but for many central Texas wineries, it has been a record breaking year. "With sales down and harvests and yields up we have had much more time for winemaking this summer" says owner of Salado Winery, June Ritterbusch. "There is so much more grape growing in this area than there was when we started 15 years ago, we were excited to take advantage of the opportunities available to us this year".

June Ritterbusch and her husband, Sheldon Vickers harvested nearly 3 tons of grapes from their vineyard here in Salado. They grow chardonnay, merlot, sangiovese and cabernet sauvignon. The vineyard was planted in 2005 and in 2006 they harvested the first 500 lbs. Since then, their harvests have ranged from 1-4 tons each summer. The spring weather was perfect for growing grapes. Ritterbusch says, "usually March is one of our busiest months with folks heading out on spring break, and of course our annual Texas Wine and Rogue Art Fest. Due to COVID, it was one of our slowest months since we opened in 2005. That meant I had plenty of time to work on pruning more carefully than I normally do".

In addition to processing grapes from their Salado vineyard, Ritterbusch and Vickers have been buying grapes from 3 Texans Vineyard in Temple, Texas since 2012. "Normally we make wine from 3-6 tons of their grapes, but this year they brought us 11 tons of grapes".

"So then we decided to buy grapes from a new



June Ritterbusch presses grapes as part of the winemaking process.

winery in Lorena, Texas, Country Springs Vineyard and Wine Garden. We purchased 2 tons of muscat and 2 tons of mourvedre from them." The biggest amount they had ever fermented in the past was about 8 tons in one year.

"In total, we processed 17 tons of grapes and from that we made 3000 gallons of wine." That is enough to fill more than 15,000 wine

bottles. "We feel quite positive about the future," Ritterbusch says. "We have been keeping busy and we have made large investments in equipment and inventory, but most importantly we have a great crew. Both paid and unpaid we have fabulous folks who work with us and tremendous friends who help us get through it all."



The Pizza Place
230 North Main Street

947-0022 Tues - Sun 11 - 9

Pickup • Dine-in • Delivery

Handcrafted Pizza | Wings | Sandwiches | Baked Pasta
Salad Bar | Beer on Tap | Hand Dipped Blue Bell

PizzaPlaceSalado.com

The *Shoppes on Main*
in Salado

The Marketplace Cafe

Gelato, Coffee, Sweets & Eats

254-947-0888 22 North Main



**Now serving Breakfast,
Lunch & Dinner!**

Wed-Sat	7am - 9pm
Sun	11am-3pm

Salado's very own Tex-Mex in the historic district.





RIO SALADO
Cocina y Cantina

Menu at riosaladotexmex.com
(254)308-2044 | 109 Royal St

FARMERS MARKET @



Barrow
BREWING CO.

SATURDAYS
MAY - NOVEMBER, 2020
9 A.M. - 1 P.M.

108 ROYAL ST. SALADO, TX

FOR VENDOR SPACE EMAIL:
KD@BARROWBREWING.COM

BROUGHT TO YOU BY
BARROW BREWING &
SOIL REGEN



Saturdays 9 am - 1 pm

Farmers & Makers Market

Barrow Brewing Company · Salado

642 N. MAIN ST. (254) 947-8848



RUBBER STAMPS
SCRAPBOOKING
RIBBONS
GREAT CLASSES

STAMPSSALADOTEXAS.COM

SALADO CREEK
JEWELERS

by Ki Ki Creations

106 North Main Street

(254) 855-5538 Private Showings

SOFTI'S Flax & Sandals
at the Stagecoach
OPEN *Thur-Sun 12-4*
Mon-Wed (by appt. 254-718-6196)
STAY SAFE • WEAR A MASK
GLOVES RECOMMENDED
401 S. Main (254) 947-4336

SALADO GLASSWORKS
HAND BLOWN GLASS MADE IN SALADO, TEXAS
interactive experience | live demonstrations | custom art & commissions
#2 Peddler's Alley, Salado, TX 76571 | 254.947.0339 | SALADODGLASSWORKS.COM

We have your essentials
VILLAGE SPIRITS
Liquor Store
1109 W. Village RD (behind Sonic)
(254) 947-7117
Monday thru Saturday 10 a.m. to 9 p.m.

Salado Creek Healing
THERAPEUTIC MASSAGE
SOUND THERAPY
REIKI & OTHER
HOLISTIC MODALITIES
McKenzie Reeve, LMT 254.308.0242
#8B Rock Creek Dr. By Appointment
Visit squareup.com/store/saladocreekhealing
for info on Yoga, Group Classes & New Modalities

Salado Calendar of Events

SALADO ROTARY CLUB

Now Meeting twice a month via ZOOM. Regular meetings will resume in the future.

SALADO LIONS CLUB

Meetings are twice a month via ZOOM. Regular meetings will resume in the future.

MONDAYS

Bikes & Brews Barrow Brewing Co., 7 p.m.

TUESDAYS

Salado Community Chorus practice. **CANCELED until September 2020.**

THURSDAYS

Run4Beer at Barrow Brewing Co., 7p.m.
Bikes & Brews Barrow Brewing Co., 7 p.m.

FRIDAYS

Live Music at Chupacabra Craft Beers, 7 p.m.
Live Music at Barrow Brewing Co. 7:30 p.m.

SATURDAYS

Bikes & Brews, Barrow Brewing Co., 7:30 a.m.

Farmers Market at Barrow Brewing Co., 9 a.m.-1 p.m.

Live Music at Chupacabra Craft Beer and Kitchen, 7 p.m.

Live Music at Barrow Brewing Co., 7:30 p.m.

SUNDAYS

Live Music at Barrow Brewing Co. 4 p.m.

SEPTEMBER 3

Village of Salado board of aldermen meeting, 6:30 p.m. via ZOOM. Public hearing on proposed FY 2021 budget. Go to saladotx.gov for log in information.

SEPTEMBER 3

Big Salado Rally in Salado for Three Local Candidates, 6:30-8 p.m. at Barrow Brewing Co., 108 Royal St. Come visit with State Senator Dawn Buckingham, MD; U.S. Congressman John

Carter, 31st District and State Representative #54 Brad Buckley.DVM Bring your masks. Register to Vote available.

SEPTEMBER 4

Britton Pyeatt, 7 p.m. at Chupacabra Craft Beer & Kitchen.

SEPTEMBER 4

Dustin Brown at Barrow Brewing Co., 8 p.m.

SEPTEMBER 5

Jonna Mae at Barrow Brewing Co., 7:309 p.m.

SEPTEMBER 6

Pistons & Pints at Barrow Brewing Company, 11:30 a.m.-1:30 p.m. Vehicle enthusiasts are invited to this monthly meet and greet with a different genre highlighted each month. The first 15 vehicles to register each month will get a reserved parking space, and their first pint on us! To register, e-mail taproom@barrowbrewing.com.

SEPTEMBER 6

Marshall Jones, 5:30 p.m. at Barrow Brewing Co.

SEPTEMBER 8

Salado Community Chorus pot luck and fall season registration, 6 p.m., Salado Civic Center.

SEPTEMBER 11

Cami Maki, 7 p.m. at Chupacabra Craft Beer & Kitchen.

SEPTEMBER 12

Farmers Market at Barrow Brewing Co., 9 a.m.-1 p.m.

SEPTEMBER 12

Asanas & Ales 10 a.m. in the Barrow Brewing Co. taproom. All-levels yoga class taught by Tiffany Schreiner. \$20 for singles, \$30 for couples and class includes your

choice of pint.

SEPTEMBER 12

Rowdy Richter, 7 p.m. at Chupacabra Craft Beer & Kitchen.

SEPTEMBER 13

Farewell performance of the Brass Ban, 5 p.m.

SEPTEMBER 18

Kyle Mathis, 7 p.m. at Chupacabra Craft Beer & Kitchen.

SEPTEMBER 19

Farmers Market at Barrow Brewing Co., 9 a.m.-1 p.m.

SEPTEMBER 19

Kyle Mathis, 7 p.m. at Chupacabra Craft Beer & Kitchen.

SEPTEMBER 19 - 20

Auditions for Fright Trail and A Christmas Carol, 3 p.m. at Tablerock Amphitheater. Attend one session

SEPTEMBER 24

Salado Area Republican Meeting, 11:30 a.m. Luncheon at Tenroc. Author Nick Adams speaker. Silent auction. Call 254 338-5717 for reservations.

SEPTEMBER 25

Steve Hamende, 7 p.m. at Chupacabra Craft Beer & Kitchen.

SEPTEMBER 26

Farmers Market at Barrow Brewing Co., 9 a.m.-1 p.m.

SEPTEMBER 26

Asanas & Ales 10 a.m. in the Barrow Brewing Co. taproom. All-levels yoga class taught by Tiffany Schreiner. \$20 for singles, \$30 for couples and class includes your choice of pint.

SEPTEMBER 26

Steve Hamende, 7 p.m. at Chupacabra Craft Beer & Kitchen.

OCTOBER 3

Randy Rogers Band at Johnny's Outback. Gates open at 6 p.m.

OCTOBER 9-10

Christmas in October, sponsored by Salado Ladies Auxiliary. **CANCELED**

OCTOBER 17

Barrow Volks Ride is a ride for all cyclists with distances of 16 miles, 50KM and 100KM and will kick off the three Saturdays of Oktoberfest at Barrow Brewing Co. on Oct. 17. Proceeds from the registration of riders benefit the Salado Volunteer Fire Department. Online registration of \$50 per rider is available at bikereg.com.

OCTOBER 17

Oktoberfest at Barrow Brewing Co. will feature fun contests, like beer stein holding and hammerschlagen as well as a vendors' market in the field by the creek. Live music and guest food trucks, including Checkpoint Germany.

SALADO Winery CO.
Salado Grown and Salado Made
Your Hometown Winery
841 N. Main St (254) 947-8011

Cowboys Bar-B-Q
Exit 285 • 1300 Robertson RD
Slow Cooking
Fast Service
Catering, Take Out or Dine In
254-947-5700
Miguel Perez, owner



FCT SALADO
FIRST COMMUNITY TITLE
40 N Main St, Salado, TX 76571
254.947.8480 Phone | 254.947.9480 Fax
By appt. only closing offices in Jarrell, Copperas Cove and Gatesville
Servicing Bell, Coryell and Williamson Counties

sugar SHACK
1 Royal Street (254) 947-8840
OPEN 10-6 DAILY
sugarshacksalado.com

CHUPACABRA CRAFT BEER
Lunch
Dinner
Late Night
Daily Specials
AND CHUPACABRA KITCHEN
401 S MAIN
CORNER OF ROYAL AND MAIN
TO-GO & DELIVERY
60 TX CRAFT BEERS ON TAP
400+ WINES
FOOD 254-208-2220 | BAR 254-308-2019

ALEXANDER'S
CRAFT COCKTAILS & KITCHEN
SIGNATURE COCKTAILS • BEER & WINE • GREAT FOOD
Limited seating guidelines & Expanded outdoor seating
Dine in, take-out or delivery
Delivery Packages For Two
Available Tuesday - Friday
Add-ons available - Order online now
www.inncreek.com/alexanders | 254-947-3828

Amber Waves

by Dave T. Phipps



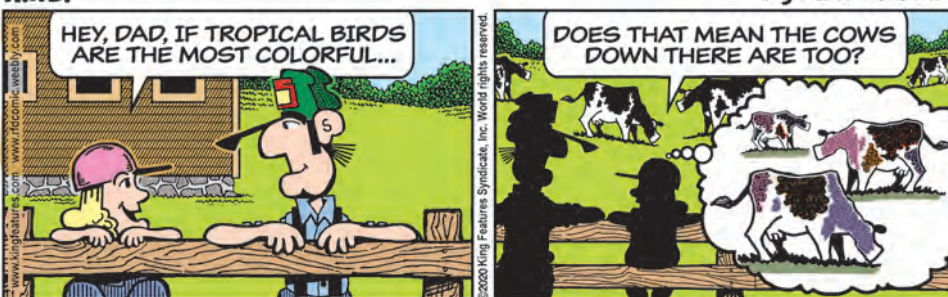
Out on a Limb

by Gary Kopervas



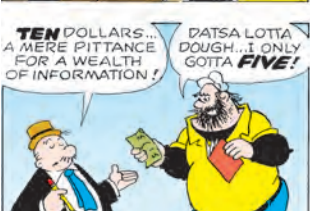
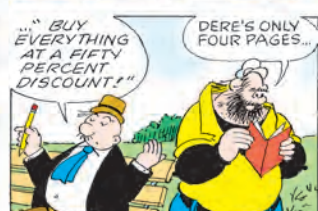
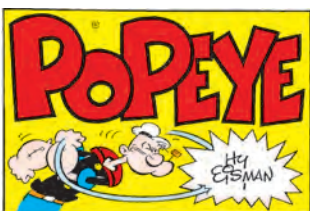
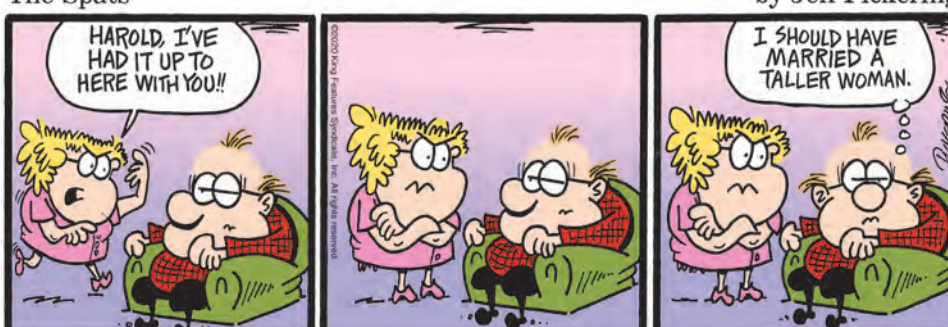
R.F.D.

by Mike Marland



The Spats

by Jeff Pickering



Contract Bridge

THE BIDDING TELLS THE TALE

West dealer.
North-South vulnerable.

NORTH

- ♠ J 7 5 4
- ♥ J 9 8
- ♦ A 6 5
- ♣ 8 4 3

EAST

- ♠ 9 6 3 2
- ♥ 10 7 6 3
- ♦ K 4 3
- ♣ 5 2

WEST

- ♠ K Q 8
- ♥ K Q 4
- ♦ 10 9 8
- ♣ Q 9 7 6

SOUTH

- ♠ A 10
- ♥ A 5 2
- ♦ Q J 7 2
- ♣ A K J 10

The bidding:

West	North	East	South
1 ♣	Pass	Pass	Dble
Pass	1 ♠	Pass	2 NT
Pass	3 NT		

Opening lead — ten of diamonds.

As the play progresses, declarer's picture of how the unseen cards are distributed steadily becomes clearer. Sometimes he gains all the information he needs almost immediately, and sometimes he must wait until later in the play.

Take this deal where declarer, at trick one, learns essentially all he needs to know about West's hand. Let's say that after declarer plays low on the opening diamond lead, East wins with the king and returns a dia-

mond to dummy's ace.

It isn't difficult for declarer to conclude that West must have the K-Q of spades, K-Q of hearts and queen of clubs for his opening bid. Only 12 high-card points are missing at this point, and West must have them all.

Accordingly, declarer leads a club from dummy at trick three and finesses the jack, knowing it will lose. West wins and returns a diamond to the jack, whereupon South cashes the A-K-10 of clubs and queen of diamonds.

On the fourth diamond, West — now down to six cards — must discard a spade or a heart. Let's say he discards a spade, in which case dummy discards a spade. South then plays the ace and another spade. West wins and is forced to lead a heart from the K-Q-4.

If he leads the king, South has an easy time making a second heart trick, so let's say he returns the four instead. Ordinarily, declarer would play the eight from dummy in the hope that West had the K-10-4 or Q-10-4, but here, with the knowledge accumulated earlier, South goes up with the jack to score his ninth trick.

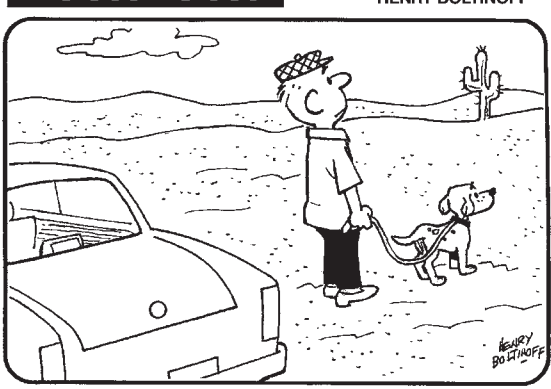
Sadly, many experienced declarers would fail to draw the obvious inference at trick one about the nature of West's hand. East's king-of-diamonds play clearly marks West with the five other missing honor cards, and South should shape all his subsequent plays to fit that assumption.

©2020 King Features Syndicate Inc.

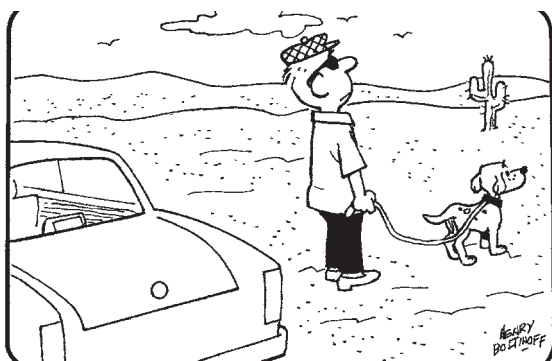
by Steve Becker

HOCUS-FOCUS

BY HENRY BOLTINOFF



Find at least six differences in details between panels.

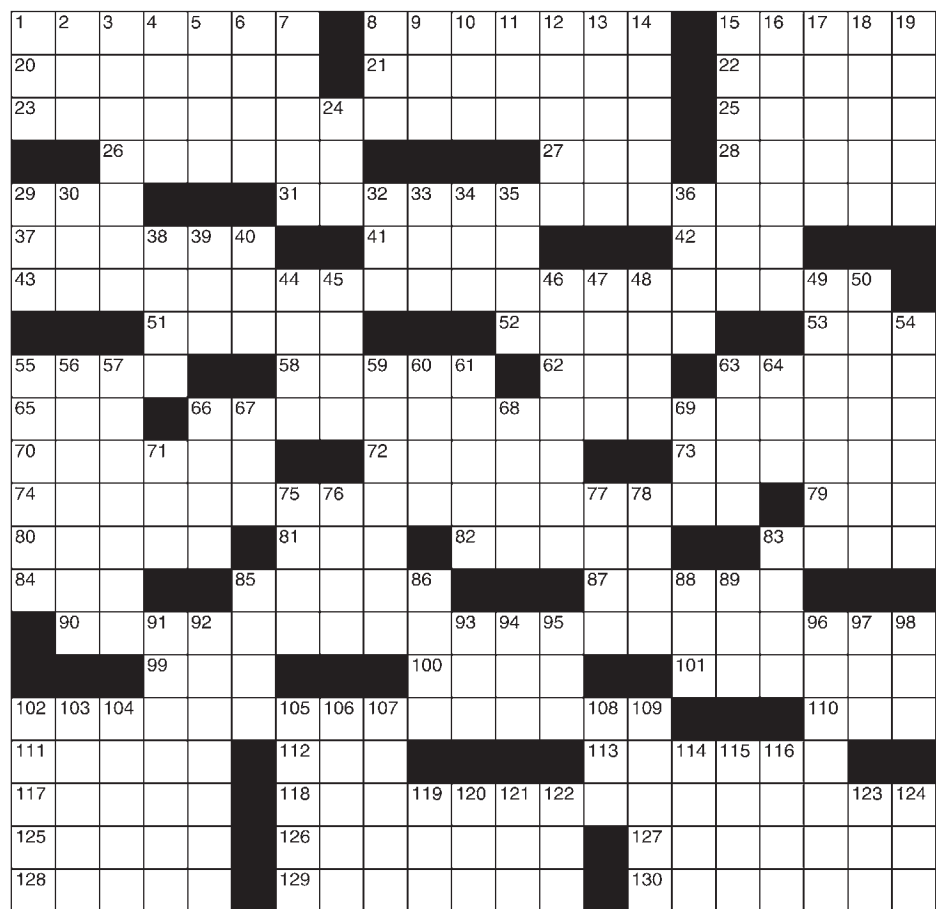


Differences: 1. Cloud has moved. 2. Sunglasses have been added. 3. License plate is missing. 4. Dog's leash is longer. 5. Birds have been added. 6. Cactus is closer.

Super Crossword

THE END IS IN SIGHT

- ACROSS**
- 1 Rum brand
 - 8 River of D.C.
 - 15 Winger of Hollywood
 - 20 Qom native
 - 21 Great Plains tribe
 - 22 "Sk8er Boi" singer
 - 23 Method of making customers' mixed drinks?
 - 25 Surrender
 - 26 Dairy farm machine
 - 27 Mai —
 - 28 Slithery creature
 - 29 Metal deposit
 - 31 Added a coward as a Facebook connection?
 - 37 "Unto the Sons" author
 - 41 Apple center
 - 42 Aries article
 - 43 Prosecuting attorney's statement about his last-ever client?
 - 51 Bewildered
 - 52 Dentist's filler
 - 53 On the — (in hiding)
 - 55 Gift add-ons
 - 58 Nice smell
 - 62 "A mouse!"
 - 63 Popular pain reliever
 - 65 Golf rarity
 - 66 Noted U.S. lithographer
 - 67 Method of making customers' mixed drinks?
 - 70 One nosing around
 - 72 R&B singer with the 2003 hit "4Ever"
 - 73 Exemplars
 - 74 Forebode the spilling of
 - 79 Golf ball holder
 - 80 Black — cattle
 - 81 Wide foot spec
 - 82 Yule tunes
 - 83 Bunks, e.g.
 - 84 TV "Science Guy"
 - 85 Garb
 - 87 Bellybutton variety
 - 90 Email a large image file in error?
 - 99 Color tone
 - 100 Vivacity
 - 101 Nasty type
 - 102 Funds given to a certain soccer player?
 - 110 IM giggle
 - 111 Lift up
 - 112 Teeny-tiny holding
 - 113 Seer's site
 - 117 Estate in the country
 - 118 Trumpeting beast wins someone's affection?
 - 125 Ashley or Mary-Kate
 - 126 Monte Carlo locale
 - 127 Vail, for one
 - 128 Must have precipitous
 - 129 Get more climbed monkey-style
 - 130 Climbed monkey-style
 - 5 Cambodian money unit
 - 6 Like a cold, damp cellar
 - 7 Like the article "a" or "an": Abbr.
 - 8 Golf average
 - 9 Hosp. scrubs sites
 - 10 Longest river in Scotland
 - 11 Photo finish?
 - 12 Photo finish
 - 13 In advance
 - 14 Waggish sort
 - 15 Hotel chain with a sun logo
 - 16 Showed plainly
 - 17 Rest period
 - 18 Poet Rainer Maria —
 - 19 Mayflower man John
 - 24 Make a gaffe
 - 29 Giant Mel
 - 30 Yell of cheer
 - 32 Here, in Haiti
 - 33 Long period
 - 34 Gun org.
 - 35 Salami seller
 - 36 Rock's Lewis
 - 38 JFK data
 - 39 JFK jet, once
 - 40 Lifesaving team, in brief
 - 44 2018 is one
 - 45 TV's Jamie
 - 46 Lacking in variety
 - 47 Absconded
 - 48 Counterfeit
 - 49 Lift up
 - 50 Untangled
 - 54 Unfity states
 - 55 New York's — Zee
 - 56 "AWOL" or "FAQ," e.g.
 - 57 1714-27 king of England
 - 59 Most unctuous
 - 60 Lo — (Chinese dish)
 - 61 Songwriter Harold
 - 63 Totals (up)
 - 64 Falsification
 - 66 Middle marks
 - 67 Large vase
 - 68 Retort to "Are not!"
 - 69 Author Anais AC
 - 71 Letters on an AC
 - 75 Actor Bruce
 - 76 Yard intruder
 - 77 Bump on —
 - 78 "The jig —!"
 - 83 Test version
 - 85 Action
 - 86 Old New York ballpark
 - 88 Robbins of "Short Cuts"
 - 89 Hard water
 - 91 Forked (out)
 - 92 Many beach mementos
 - 93 TV Tarzan player Ron
 - 94 "Thwack!"
 - 95 Ending for serpent
 - 96 Get rid of, as a bad habit
 - 97 — de Oro
 - 98 Slithery creature
 - 102 — (cat variety)
 - 103 Force out of the country
 - 104 Counterfeit
 - 105 Water jugs
 - 106 Ignited anew
 - 107 Irk
 - 108 "Just joking!"
 - 109 Hair lock
 - 114 Egyptian sacred cross
 - 115 Twice CCI
 - 116 Slant
 - 119 Bakery buy
 - 120 With it, man
 - 121 Exist
 - 122 "The Mugging" actress
 - 123 R&B singer
 - 124 Bummed out

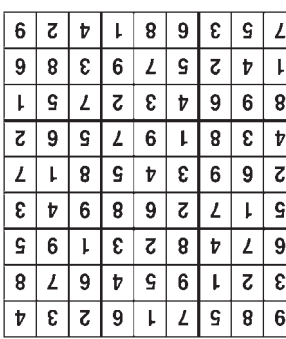


Trivia test

by Fifi Rodriguez

- U.S. STATES: Which state has the only flag that isn't rectangular?
- GOVERNMENT: What is the subject of the eighth amendment to the U.S. Constitution?
- TELEVISION: What was the name of Jed Clampett's bloodhound on "The Beverly Hillbillies"?
- GEOGRAPHY: Which country is home to a giant formation known as Ayers Rock (Uluru)?
- ADVERTISING: Which company's advertising mascot was a camel named Caleb?
- FAMOUS QUOTATIONS: Which 20th-century novelist wrote, "And all the lives we ever lived and all the lives to be are full of trees and changing leaves"?
- MEASUREMENTS: How many tablespoons are in a half cup?
- LITERATURE: What was the name of the tiger in "The Jungle Book"?
- SCIENCE: When did the first space shuttle launch?
- MOVIES: Which 1980s movie had the tagline, "He may be dead but he's the life of the party"?

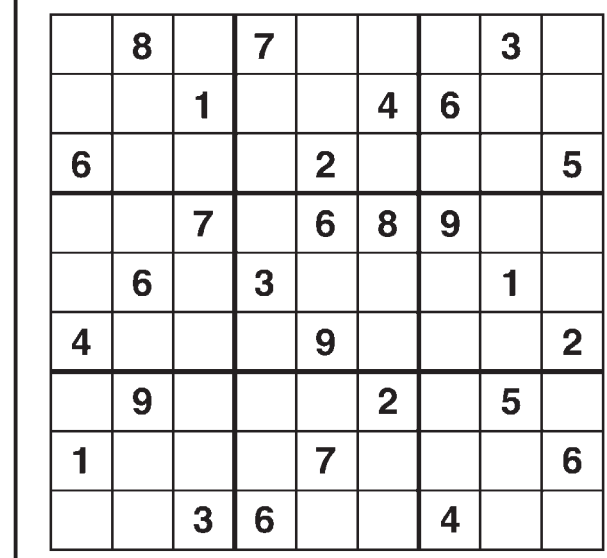
- Answers**
- Ohio
 - Prohibits cruel or unusual punishment
 - Duke
 - Australia
 - GEICO
 - Virginia Woolf
 - Eight
 - Shere Khan
 - 1981
 - "Weekend at Bernie's"



Answer

Weekly SUDOKU

by Linda Thistle

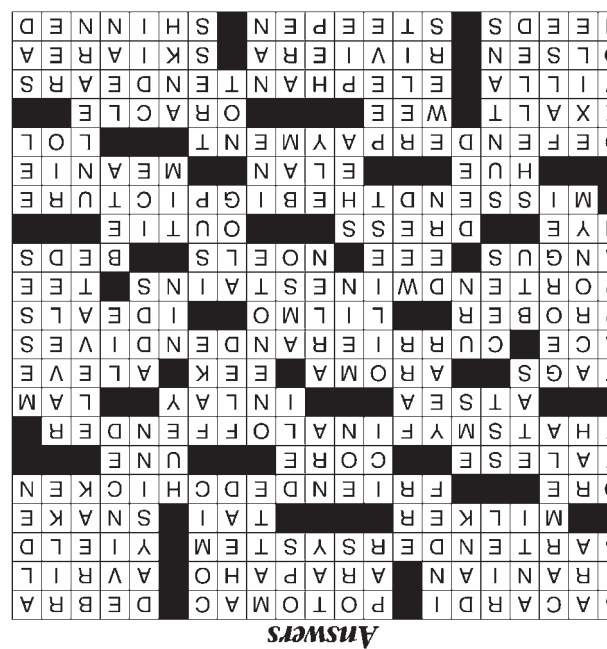


Place a number in the empty boxes in such a way that each row across, each column down and each small 9-box square contains all of the numbers from one to nine.

DIFFICULTY THIS WEEK: ♦♦♦

♦ Moderate ♦♦ Challenging ♦♦♦ HOO BOY!

© 2020 King Features Synd., Inc.

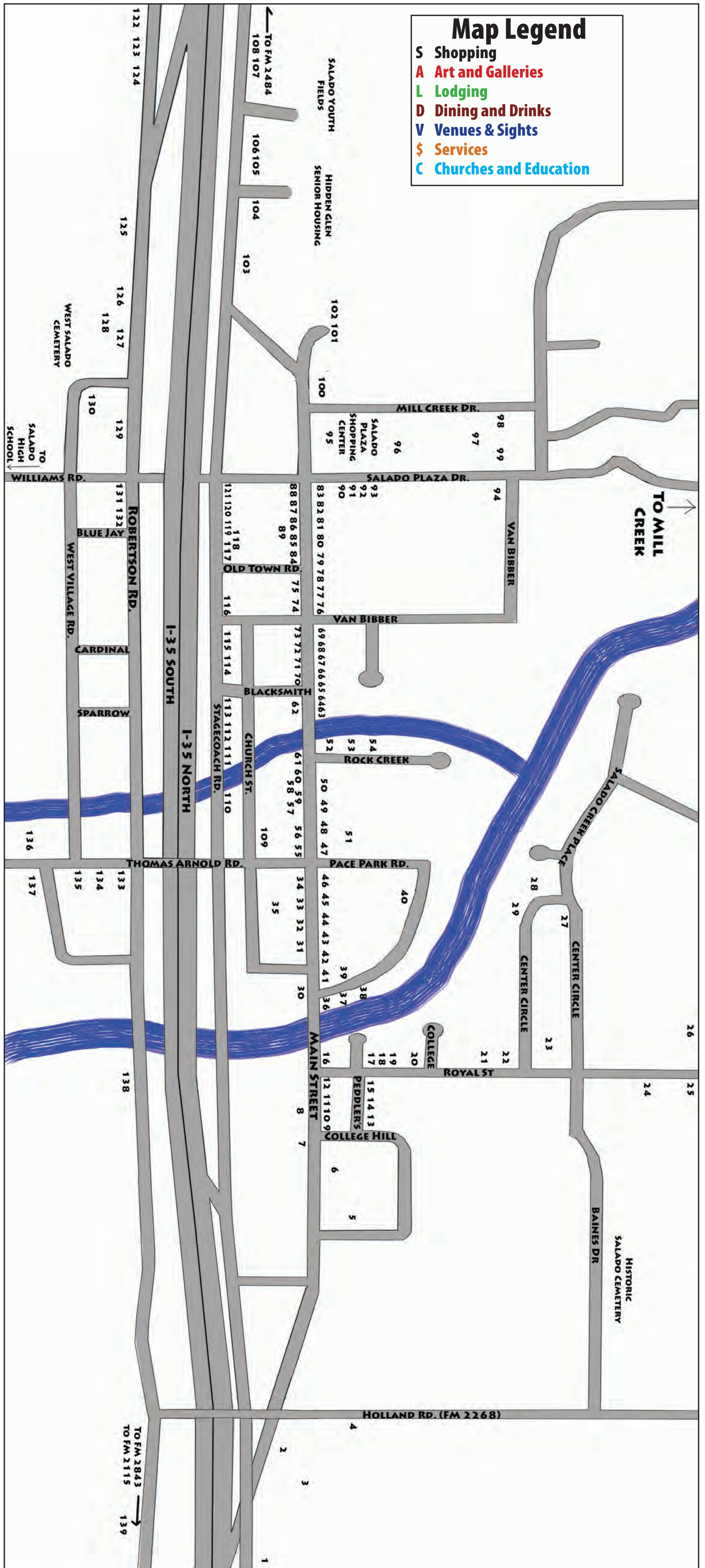


Super Crossword

If you enjoy the Puzzle page, try our interactive crossword and sudoku puzzles online at: saladovillagevoice.com

Shopping Map of Salado

#	Business Name	Type
4	St. Stephen Catholic Church	C
6	Salado College Park	V
7	Raney & Associates	\$
9	Salado Museum	V
	Salado Visitors Center	\$
	Salado Chamber of Commerce	\$
	Village of Salado Tourism Office	\$
10	Sofi's	S
11	Chupacabra Craft Beer and Winery	D
	Chupacabra Kitchen	D
14	Salado Glassworks	A
15	Rio Salado Cocina y Cantina	D
16	The Sugar Shack	S/D
17	Barrow Brewing Co.	D
	Happy Pizza	
21	The Venue	V
	Village Spa	S
22	The Shed	D
24	Tablerock	V
26	Salado United Methodist Church	C
29	Inn on the Creek	L
	Alexanders Craft Cocktails & Kitchen	D
30	First Baptist Church	C
31	Fairway Mortgage	\$
32	First Texas Brokerage	\$
34	First Community Title	\$
	Farmer's Insurance Zbranek Agency	\$
40	W.A. Pace Memorial Park	V
53	Salado Creek Healing	\$
55	Salado Family Dentistry	\$
58	The Shoppes on Main	S
	The Marketplace Cafe	D
60	Salado Creek Jewelry	S
62	The Pizza Place	D
75	Stage Stop Center	\$
	Bruce Bolick, CPA	\$
76	Salado Civic Center	\$
81	Salado Wine Seller and Salado Winery Co.	D
82	St. Joseph's Episcopal Church	C
85	Salado Post Office	\$
86	Bill Bartlett - Century 21	\$
87	The Personal Wealth Coach	\$
89	Stamp Salado	S
90	Presbyterian Church of Salado	C
91	Troy Smith Financial Services	\$
92	Salado Sculpture Garden	A
96	Salado Plaza	\$
	Ace Pest Control	\$
	Anytime Fitness Salado	S
	Integrity Rehab	\$
	Monteith Abstract	\$
	Salado's Hair Shop	\$
	Salado Village Voice	\$
97	Brookshire Brothers	S
100	Salado Public Library	C
101	Salado Cleaners	S
113	Salado Church of Christ	C
126	Cowboy's Barbecue	D
130	Village Spirits	S
132	Broecker Funeral Home	\$
135	Carus Dental	\$
136	Salado Schools & Stadium	C
	Village Church of Salado	C
139	Cedar Valley Baptist Church	C
Not Shown on the Shopping Map		
	Don Ringer	\$
	3C Cowboy Fellowship	C
	Grace Church	C
	Mill Creek Country Club	V
	Brody's Mill Creek Clubhouse	D
	JD's Truck Stop and Grill	S/D



Historical Markers in Salado

- | | | | |
|---------------------------------------|-----------------------------------|-------------------------------|---------------------------------|
| 6. Salado Historic College Hill | 25. The A.J. Rose Mansion | 35. Salado Masonic Lodge #296 | 61. Historic Lenticular Bridge |
| 8. Shady Villa Hotel (Stagecoach Inn) | 26. Old Methodist Chapel | 45. The Anderson House | 49. The Vickrey House |
| 8. Main Street Bridge | 27. Caskey-Hendricks House | 46. Old Saloon | 76. Boles-Aiken & Denman Cabins |
| 16. Barber-Berry Mercantile | 28. Dr. McKie Place (Twelve Oaks) | 48. The Norton-Orgain House | 77. The Robert B. Halley House |
| 23. The Baines House | 29. Alexander's Distillery | 50. The Barton House | 79. The Reed Cabin |
| 24. Historic Dipping Vats | 30. First Baptist Church | 51. The Levi Tenney House | 100. The Josiah Fowler House |
| | 31. The Tyler House | 55. The Armstrong Adams House | |

Marketplace



5 bed 3 & 1/2 bath home on 6.34 creek front Acres
1137 Western Trl, Salado, TX 76571



Shane LaCanne
(254) 654-4066



3b 2 ba 1878 sq ft updated town home
Overlooking Salado Creek and Golf Course
1910 Old Mill Rd Unit #1



Shane LaCanne
(254) 654-4066

CHILD CARE

Now Enrolling ages 0 - 12. Kid's Zone Learning Center with two locations in Jarrell and one in Georgetown. See our ad for phone and address info.
tfnd

CLEANING

Clear View Window Cleaning: Windows, gutters, powerwashing, ceiling fan cleaning.
(254)931-6172.

DRY CLEANERS

Salado Cleaners: Laundry, dry cleaning, alterations, leather, suede, 1209 N. Stagecoach, 254-947-7299. tfnd

DIRT/STONE WORK

CBS Construction: septic tanks, house pads, driveways, lot clearing, top soil, 254-718-1752. tfnd

CONTINUED, ON PG. 2D

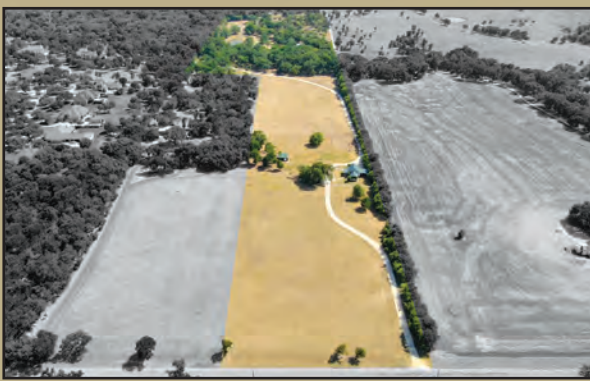
CENTURY 21

C21BB.COM

Bill Bartlett

860 N. MAIN - SALADO, TX

254.947.5050



1621 Sulphur Wells Rd., Salado
26 ac. with updated farmhouse
\$1,500,000



1402 Indian Pass, Salado
5 BR, 5 BA, 2 half baths on 6 ac.
\$1,200,000



15500 Spotted Horse Lane, Salado
4 BR, 3 BA on 26 ac.
\$719,921



4 & 8 Rock Creek, Salado
Commerical/Residential Space, Downtown Salado
\$595,000



14615 Armstrong Rd., Salado
3 BR, 2 BA, 24.88 AC.



2506 Hester Way, Salado
5 BR, 4 BA
\$559,900



2201 Indian Tr., Salado
4 BR, 3.5 BA
\$489,900



11002 La Paloma Loop W, Salado
4 BR, 4.5 BA
\$454,900



1611 Royal St., Salado
4 BR, 3.5 BA on 5+ ac.



1308 Mission Trail, Salado
4 BR, 2.5 BA on 3.36 ac



512 Creek Run Circle, Salado
3 BR, 2 BA
\$285,021




3070 Pecan Meadow Dr., Belton
4 BR, 3 BA
\$539,700



Area Land Listings

- 5.12 ac. in the Escarpment, Belton ISD, view of the lake from corner of property
- 148 ac. Productive rolling crop land near Granger. **SOLD**
- 220 ac. working ranch with huge potential!

TREE TRIMMING POWER WASHING TREE REMOVAL PATIOS



J.E.J TREE SERVICE

FREE ESTIMATES
254-444-6409
254-444-3630

Jorge Robles
Owner

HAULING OFF BUSH REMOVAL

Britt Heating & Air Conditioning

Installations • Repairs

Office **947-5263**
Mobile **760-1004**

Serving Salado for 25 years
TACL #B006640

RANEY & ASSOCIATES

ANNA LOU RANEY, Broker/Realtor 254-913-1215
DANIEL RANEY, Realtor 254-760-2591
ANN CARROLL, Realtor 254-760-0101
GEORGE ROMFH, Realtor 254-718-6845
JENNIFER RAINE, Realtor 254-421-2178



616 INDIAN TRAIL
Superior quality and detail in this beautiful Tuscan home. This home is exceedingly well-appointed with an open floor plan. There are 5 bedrooms, 4.5 bathrooms, 2 living areas, formal & informal dining rooms, outfitted with Viking appliances, propane gas cook top, granite countertops, an island with room for bar stools. Approximately 4,021 Sq. Ft.
\$679,000



2200 Bluff Circle
Charming home with 3 bedrooms, 2 and 1/2 baths in a beautiful established Mill Creek neighborhood on a cul-de-sac. Homeowner dues \$175 monthly include water inside and out plus lawn mowing once a week. Great kitchen with center island, large pantry and breakfast room. The living room features a fireplace and French doors opening to large patio with views of a seasonal creek. Master bedroom room is downstairs, 2 bedrooms and a bath upstairs. Walk in closet in garage has heat and air.
\$295,000



3901 Chisholm Trail #17
Townhome with 3 bedrooms or 2 with a study, living room with gas fireplace. The home was updated with a Lennox HVAC (05/13/19) New windows (07/24/17)
\$245,000



4220 Big Brooke
New construction in Amity Estates, 2394 sq ft, 4/2.5, .89 acre lot, estimated finish date in September.
\$379,000



1219 AMBROSE
4/3 with office and bonus room. Beautiful views from pack patio, on golf cart path, custom upgrades, move-in ready!
\$415,000



410 N Church St.
Residential or Commercial property. 1310 sq ft 2/1 home, 736 sq ft workshop, on I-35 Frontage Rd.

List your home with **Raney & Associates**
RaneyRealEstate.net

AUSTIN board of REALTORS TBBOR
MLS f

Lone Star Grading, commercial, residential, industrial excavation, grading, paving, pads, driveways, roads, 254-947-0149 or 254-933-7900

FINANCIAL
Bruce A. Bolick, CPA: Payroll, Individual and Business Taxes. By appointment, (254) 718-7299. SaladoCPA@aol.com. tfnd

The Personal Wealth Coach®: SEC registered investment advisor, highly personalized portfolio design and management, 254-947-1111.

Troy L Smith Financial: Personal investment solutions. 254-947-0376, Troysmith.com.

FLORIST
Brookshire Brothers full service florist. Blooming plants. 254-947-8922.

FREE
FREE used wine shipping boxes available at Salado Winery 12-6 daily. 841 N Main St.

GARAGE, AUCTIONS, ESTATE SALE
Huge Estate Sale- Fri. 4th, Sat. 5th. 9 a.m. - 5 p.m. 501 Whispering Oaks.

GARBAGE
Clawson Disposal: Competitive pricing for great garbage service; containers, too. 512-746-2000.

HEALTH AND FITNESS
Anytime Fitness: 24 hour access in Salado Plaza. Locally owned and operated 254-947-1063

Carus Dental: General dentistry services. Dr. Ron Henderson, DDS, 254-947-8067

Family Dentistry: Lumineers for straighter, whiter teeth. Douglas B. Willingham, DDS, 254-947-5242.

Integrity: Rehab & Home Health Physical therapy, speech therapy, occupational therapy, in-home skilled nursing. integrityrehab.net, 254-699-3933.

Salado Creek Healing - Therapeutic massage, sound therapy, reiki and other holistic modalities by appointment. McKenzie Reeve, LMT 254-308-0242

HEAT & AIR
Britt Heating & Air: Installation and repairs, 254-760-1004, 254-947-5263, TACL #B006640

HELP WANTED
Quintero Engineering, LLC is a Local land surveying and civil engineering company. We are seeking to immediately hire a Land Surveying Rodman/Instrument Man.

This is an entry level position that will be on a field crew assisting a Party Crew Chief Performing surveying duties. Ideal candidates are self-motivating, eager to learn and follow direction. Applicants must have a valid driver license and must be able to pass a drug screening test. Quintero Engineering offers great benefits including medical, dental, 401k and vacation. Salary competitive and compensation commensurate with experience. Email: ktang@quinteroeng.com Applications accepted at 1501 W Stan Schlueter Loop, Killeen M - F 8am to 4pm. 8/20-9/3b

INSURANCE
Rita Zbranek, Farmers Insurance, auto, home, life, commercial, 254-947-0995.

JEWELERS
Devereaux's Jewelers: Quality crafted custom work, jewelry repair, appraisals, watch repair, stone setting, diamond sales, photo design. 254-771-1260.

Lastovica Jewelers: in-store jewelry repairs, diamond sales, setting and appraisal, custom design, watch repair, 254-773-5772.

Salado Creek Jewelers by Kiki Creations: 106 North Main St. 254-855-5538, private showings.

LANDSCAPING
LAWNWORK & TREE
Salado Landscaping - residential landscaping, masonry and concrete services. Locally owned and operated (254) 247-7339.

Trees, Shrubs & Landscaping, Pruning, www.victormarelandscaping.com. Residence 254-527-3822 or mobile 512-818-3822, Removal and Hauling. Flower beds, yard work, top soil. Serving Salado 38 years. 0724tfn

PERSONAL SERVICES
Salado's Hair Shop, full service salon. Hair, Nails and Massage for the entire family. 213 Mill Creek Dr. Suite 160. (254)421-5173.

PEST CONTROL
Ace Pest Control: Customer satisfaction guaranteed, free estimates, TPCL #12512; David Preston. 254-947-4222

PLUMBING
Moffat & Daughters Plumbing: Tankless Water heater Service, repair, remodeling, Rinnai authorized service provider. 254-289-5986 (local) Master LIC # M017002

Salado Plumbing. In-home repairs, 254-947-5800. Master LIC M 16892

REAL ESTATE SERVICES
Monteith Abstract & Title Company, Salado, experience, family, integrity. 254-947-3922. tfnd

First Community Title, branches in Salado, Temple, Killeen and Gatesville. 40 N. Main Street,

Salado 254-947-8480. tfnd
Salado Homes available Entire Real Estate, Shane LaCanne. (254)654-4066.

RENTAL/LEASE
COMMERCIAL, RETAIL
Salado office for rent with IH 35 frontage; 1176 sq. ft., 5 offices; kitchen; storage room and 1 BA. Located at 1313 N. Stagecoach Dr., Salado, TX \$1350/mo. Mary Kite, Realtor 254-718-2484. 7/16tfnb

Commercial space for lease on I-35, Salado. Up to 5,000 sqft of climate controlled space and up to 1.5 acres of parking available. 254-947-5577, www.efirsttexas.com 4/23tfn

RENTAL/LEASE
RESIDENTIAL
Charming, spacious, 2/2/1 townhome for rent. Clean!! 6 closets, vaulted ceiling, w/d closet inside. Walk to shopping center. Lawn care provided. 254-913-9813, www.saladorentals.com. 0/2tfnb

RESIDENTIAL SALES
Stunning retreat on .75 wooded acres with beautiful views. Verdant spaces, swimming pool, cabin, tool shed, covered BBQ area, outdoor living spaces, stone pathways accent this 2 bedroom/2 bath home. 1207 Indian Trail \$399,000 Call Raney and Associates (254) 913-1215

New Construction: 4 bedroom, 2 bath on .69 acre corner lot. Granite, full sprinkler system, stainless appliances. 4519 Green Creek \$340,000 Call Raney and Associates (254) 913-1215

This stately home has gorgeous wood flooring through the formal living areas & kitchen. Relax in front of the fire in the cozy den while enjoying the separate wet bar/coffee bar area. Living areas & master bedroom overlook the glistening in-ground pool. The master bedroom is large enough for a separate small sitting area, & please notice the over-sized master closet. The downstairs guest bedroom can also be used as an office or study. The downstairs includes a guest bath & powder room. The upstairs boasts two large bedrooms & a bath. Step out onto your back patio & relax around the private pool area. 2201 Indian Trail, Salado. \$489,900. Century 21 Bill Bartlett. 947-5050.

3 BR, 2 BA home on two lots in Mill Creek. Close to shopping & easy access to IH 35. Open living design for kitchen, living & dining. Separate bedroom floor plan. Fireplace in living area. Sunroom has large windows overlooking the large backyard. The home is wheel chair accessible from garage & into living area. 512 Creek Run Circle, Salado. \$285,021. Century 21 Bill Bartlett. 947-5050.

Exquisite custom home with incredible curb appeal! This spacious home is filled with desirable finishes including stone accent walls, stain grade cabinets, granite counter-tops, custom concrete hardwood floors

CONTINUED, ON PG. 3D

CBS Construction
254 718-1752



Gravel Driveways | Parking Lots
Septic Tanks | House Pads
Lot Clearing | Demolition

Chet Sutton, owner-operator

(254) 247-7339
Salado Landscaping



LANDSCAPING
Flowerbeds - Planting
Weed Removal - Mulching
Tree Trimming/Pruning
Lighting - Irrigation & more

MASONRY
Borders - Mailboxes
Patios - Walkways
Firepits - Fireplaces
Patios - Kitchens & more

www.saladolandscaping.com

Al Clawson Disposal, Inc.



(512) 930-5490 • www.ClawsonDisposal.com
ASK US ABOUT OUR SERVICES
Waste Pickup • Recycling • Roll-Off Containers

Salado Plumbing

"We are ready"
In home repairs

947-5800
Master LIC M 16892



RECOVERY ROOM UPHOLSTERY

● CUSTOM UPHOLSTERY ●
● FREE PICK UP & DELIVERY ●

515 E. VET. MEMORIAL BLVD. HARKER HEIGHTS
254-699-6105

You can Always Rely on



McGREGOR WELDING SUPPLY CO., INC.
Welding Equipment and Supplies

110 South Wheat Road
Belton, Texas
254-933-WELD

Clear View Window Cleaning

Let the light shine through

Windows | Gutters
Powerwashing
Ceiling Fan Cleaning

(254) 931-6172
ClearViewWindows_Belton@yahoo.com

Classifieds

and a three car garage. 10841 Stinnet Mill, Salado. First Texas Brokerage 254-947-5577 9/8tfn \$599,900.

This one of a kind, custom home was built for a growing family & entertaining. Take special notice of the octagonal dining room. Gorgeous wood flooring throughout all the main living areas. Need a room for projects and crafting? Then you need look no further. The large back guest bedroom is set up as a bedroom or craft room with its own separate

sink. Master bedroom & large guest bedroom/craft room overlook the golf course. The enclosed sun room is the perfect place to enjoy your morning coffee in the quiet of your home while watching all of the outdoor activity. Large extended patio allows for outdoor entertaining. 2506 Hester Way, Salado. \$559,900. Century 21 Bill Bartlett 947-5050.

This gorgeous house features a phenomenal open kitchen, living, & dining space to include a butler's pantry with wine

fridge, second dishwasher, second full-sized fridge & pantry space. The 4 generous sized bedrooms each have their own private bathroom. The home boasts an oversized 3 car garage, mudroom & powder room, and to top it off, this "smart" home features a video doorbell, Alexa, smart hubs & switches and CAT5. The kitchen is accentuated by a beautiful tile backsplash, double ovens, farmhouse sink, granite counters & large island. The home has an indoor electric fireplace & outdoor wood burning fireplace - an entertainer's dream! Salado ISD. 11002 La Paloma Loop W, Salado. \$454,900. Century 21 Bill Bartlett

FROM, PG. 2D

947-5050

Charming home with 3 bedrooms, 2 and 1/2 baths in a beautiful established Mill Creek neighborhood on a cul-de-sac. Homeowner dues \$175 monthly include water inside and out plus lawn mowing once a week. Great kitchen with center island, large pantry and breakfast room. The living room features a fireplace and French doors opening to large patio with views of a seasonal creek. Master bedroom room is downstairs, 2 bedrooms and a bath upstairs. Walk in closet in garage has heat and air. \$295,000. Call Raney and Associates (254) 913-1215

PROPERTY FOR SALE

45 acres on FM2268: Directly behind Brazos Valley Equine Hospital, survey and restrictions available. \$675,000 Call Raney and Associates: Jennifer (254) 421-2178

10.1 acre lot, improved pastureland, owner will fence entire property, part of 40 acre parcel. FM 2484 frontage \$275,000 Call

September 3, 2020, **SALADO Village Voice**, Page 3D

Raney and Associates: Jennifer (254) 421-2178

SERVICES

Kitchen & Bath Revamp dust free, clean and safe tile removal. EcoTileRemoval.com 254-444-1199. 8/6-2/5b

STORAGE

StowAway Storage Household - Commercial 10X10 -

10x20-22x40 Clean, lighted, fenced, Key punch entry. 947-5502 or 721-1807 tfnb

WELDING

McGregor Welding Supply, old fashion friendly service, Belton. We have all your welding needs. Sales and service. (254) 933-WELD

Salado Police Report Aug. 24-30

Call Type Description	#
Agency Assist	2
Alarm Business	3
Alarm Residential	2
Animal Complaint	2
Calls For Service	54
Citations	11
Citizen Contact	1
Civil Matter	2
Crash	2
Driving While Intoxicated	1
Fire	2
House Watch	104
Medical	3
Possession of Marijuana	1
Noise Disturbance	1
Reckless Driving	3
Stranded Motorists	6
Suspicious Circumstances	2
Theft	1
Traffic Hazard	7
Unlawful Carry of a Weapon	1

Chief's Note: School zones will be active beginning next Tuesday (Sept 8th). Williams road, beginning at West Village, to FM 2484 will be a 20 MPH zone in the morning from 7-8:30 a.m. and 2:30-4 p.m.

Full color included in display ads

Contact Marilyn

today for advertising information

254-947-5321

or email

advertising@

SaladoVillageVoice.com

Window Washing Wonders

Professional Window Cleaning and Power Washing Services
Gutter & Blinds Cleaning



Zack Tumlinson

Call or Text (281) 682-0142
office (254) 231 3289

WindowWashingWonders@gmail.com

Time for your **TANKLESS WATER HEATER Annual Service?**

Call Bubba Moffatt

254 **289-5986** (local)

Moffatt & Daughters Plumbing Co.

Rinnai authorized service provider

RMP 17002
Bubba Moffatt

Salado Independent School District Salado, Texas

Request for Proposals

Salado ISD will be accepting proposals for the 2020-2021 school year for the following supplies:

GAS, DIESEL & OIL PRODUCTS

HVAC

ELECTRICAL SUPPLIES

LOCKSMITH

MAINTENANCE SUPPLIES (Including PPE)

PEST CONTROL & WEED CONTROL

PLUMBING

PROPANE

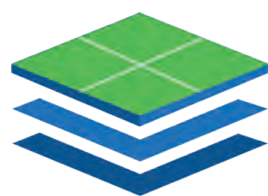
TIRES

WASTE DISPOSAL

Sealed proposals will be received in the Business Office, Salado ISD, 601 N. Main, P.O. Box 98, Salado, TX 76571 until 1:00 p.m., **September 24th, 2020**. Proposals received after the time and date specified will not be considered. Salado ISD reserves the right to accept or reject any or all proposals.

Additional information may be obtained from the Salado ISD Operations Office at (254) 947-6962

**DUST FREE, CLEAN & SAFE
TILE REMOVAL**
SERVING CENTRAL TEXAS



eco
TILE REMOVAL
DUST FREE. CLEAN & SAFE

204 N BIRDWELL ST.
BELTON, TX

EcoTileRemoval.com

CALL (254)444-1199
FOR A FREE ESTIMATE

LONE STAR GRADING & MATERIALS



COMMERCIAL

RESIDENTIAL

INDUSTRIAL

**EXCAVATION • GRADING • SITE PREPARATION
YARDS • LOT CLEARING • PADS • ROADS
DRIVEWAYS • PARKING LOTS**

ALL TYPES DIRT WORK • MATERIALS & HAULING

FREE ESTIMATES

(254) 947-0149 or (254) 933-7900

TEXAS STATEWIDE CLASSIFIED ADVERTISING NETWORK



TexSCAN Week of
August 30, 2020

ACREAGE

Hunting/investment/recreational property. We have some of the best in Texas! From the Hill Country (Edwards, Menard, Coke, Val Verde County, free ranging exotics) to South Texas (Kinney, Duval, Live Oak County, whitetail, hogs). Large or small acreage. 30-year fixed rate owner financing, only 5% down. Call toll-free or email for individual prices and terms, www.ranchenterprisesltd.com, 800-876-9720.

AUCTIONS

Retirement Auction, Wed., Sept. 9, starts @ 9:12 a.m., 665 N. 150 Road, Mounds, OK 74047. Auction will have 2 rings. Tractor, trailers, Yamaha Wolverine side by side, shop tools, farm equip., lawn mower, high-end western furniture, player piano, antiques & collectibles and more. Lots 251-379 are offered online - simulcast bidding begins at 12:37 p.m. For full terms, photos and updates visit chuppsauction.com, 918-630-0495.

V & V Machine Shop Auction, 2915 S. Zarzamora St., Bldg. N, San Antonio, TX. Bid live online or in person Sat., Sept. 12, 10 a.m. View: Fri. Sept. 11, 10 a.m.-4 p.m.; sale day 8-10 a.m. 335 Lots - Milling Machines, Lathes, Drill Bits, Welder, & More. Bring folding chair. See website for details: www.siskauction.com, 361-456-7771. 10%/12% Buyers Premium, John Sisk Auctioneers, Inc. Tx #7425

Halliburton Real Estate Auctions - Texas Auctions Oct. 7. Locations Include Industrial, Warehouse, Office & Land Properties in Brownfield, Odessa & Sonora. Buildings Open: 11-2 p.m. Fri. Aug. 28 & Sept. 11. All Sell Without Reserve. TX Jeffrey Michael Ashby RE LIC 550021; Thomas E. Barnes III AUC LIC 6457. Call 800-801-8003, williamsauction.com/halliburton.

GENERATORS

GENERAC Standby Generators. The weather is increasingly unpredictable. Be prepared for power outages. FREE 7-year extended warranty (\$695 value!). Schedule your FREE in-home assessment today. Call 1-855-704-8579. Special financing for qualified customers.

INTERNET

AT&T Internet. Starting at \$40/month w/12-mo agmt. Includes 1 TB of data per month. Get More For Your High-Speed Internet Thing. Ask us how to bundle and SAVE! Geo & svc restrictions apply. Call us today 1-855-439-5457.

LOG HOMES

Log Homes - 4 Log Home kits selling for balance owed, free delivery. Model #101 Carolina, bal. \$17,000; Model #203 Georgia, bal. \$19,950; Model #305 Biloxi, bal. \$14,500; Model #403 Augusta, bal. \$16,500. View plans at www.loghomedream.com.

OIL AND GAS RIGHTS

We buy oil, gas & mineral rights. Both non-producing and producing including non-Participating Royalty Interest (NPRI). Provide us your desired price for an offer evaluation. 806-620-1422, LoboMineralsLLC@gmail.com. Lobo Minerals, LLC, PO Box 1800, Lubbock, TX 79408-1800.

MEDICAL

Portable Oxygen Concentrator May Be Covered by Medicare! Reclaim independence and mobility with the compact design and long-lasting battery of Inogen One. Free information kit! Call 866-747-9983.

Life Alert. One press of a button sends help FAST, 24/7! At home and on the go. Mobile Pendant with GPS. FREE First Aid Kit (with subscription.) CALL 844-831-1525. FREE Brochure.

DENTAL INSURANCE from Physicians Mutual Insurance Company. NOT just a discount plan, REAL coverage for 350 procedures. Call 1-855-901-0467 for details. www.dental5plus.com/txpress. 6118-0219

Texas Press Statewide Classified Network
273 Participating Texas Newspapers • Regional Ads
Call Salado Village Voice at 254-947-5321

NOTICE: While most advertisers are reputable, we cannot guarantee products or services advertised. We urge readers to use caution and when in doubt, contact the Texas Attorney General at 800-621-0508 or the Federal Trade Commission at 877-FTC-HELP. The FTC web site is www.ftc.gov/bizop.



**FULL COLOR newspaper advertising...
Publish an ad each week and receive
Discounted rates on
Quarter, Half, and Full page ads
Change Copy & Ad Size as needed
advertising@saladovillagevoice.com
Contact Marilyn today 254-947-5321
Friday noon deadline for next Thur.**

Salado Fire Department Reports Aug. 23-29

Date & Time	Address	Incident Type
08/23	MILL CREEK DR	Dispatched & cancelled en route
08/23	HODGE CANYON DR	Smoke Detector Activation – no fire
08/24	BLACKBERRY RD	Difficulty Breathing
08/25	UNION GROVE PARK RD	Grass Fire
08/26	PRAIRIE LN	Falls
08/26	FM 2843	Sick Person
08/26	INTERSTATE 35	Dispatched & cancelled en route
08/26	INTERSTATE 35	Motor Vehicle Accident - no injuries
08/26	FM 2115	Sick Person
08/26	SMITH BLUFF RD	Difficulty Breathing
08/27	INTERSTATE 35	Passenger Vehicle Fire
08/27	INTERSTATE 35, BELTON	Passenger Vehicle Fire (Mutual Aid)
08/27	ANDRE LOOP	Sick Person
08/28	INTERSTATE 35	Grass fire
08/28	ROSE LN	Convulsions / Seizures
08/28	INDIAN TRL	Lift Assist
08/29	INTERSTATE 35	Motor Vehicle Accident – no injuries
08/29	LAUREL HIGHLANDS DR,	Difficulty Breathing
08/29	INTERSTATE 35	No incident found
08/29	CHALK RIDGE FALLS	Rescue / EMS
08/29	INTERSTATE 35, 278 NB	Passenger Vehicle Fire / Grass Fire

254-947-5577



RESIDENTIAL FARM & RANCH COMMERCIAL

GLENN HODGE
254-718-2000

RYAN HODGE
254-541-2255

DOTTIE SHIRLEY
254-721-9700

ALLAN PERSKY
254-760-2924

BUDDY MCBRYDE
254-760-4058

LARRY WENTRCEK
254-718-5326

JERRY ROBERTS
254-760-6576

TIA DOSKOCIL
254-718-9442

JOSH JACOBSEN
254-541-3319

WICK THOMAS
254-718-1404



3217 Stratford Dr
View this luxurious home with magnificent trees & a porte-cochre grand entry. Step inside, & you will be welcomed with high ceilings & grand staircase.
\$459,900



121 Eagle Rock
Extraordinary home inside and out, custom all the way from the floors to the hand painted ceilings. Step through these beautiful double doors and into your next piece of Salado countryside, only minutes from downtown!
\$585,000



2821 Sulphur Wells Rd
A very detailed custom home with approx 4,900 sq ft. The property is overlooking 37 beautifully wooded acres including a separate guest house.
\$1,750,000



8336 Spring Creek Loop
S & G ventures does it again with this stunning modern hill country style home. You'll notice the contrasting black and gold accents immediately as you walk through the doors of this beauty.
\$449,500



1146 Shepherd DR, Salado
One of a kind English Cottage home set in a tranquil neighborhood. Once you enter, notice the beautiful hardwood floors throughout the entire downstairs
\$349,900



2517 Winners Circle
Absolutely gorgeous tree-covered estate in the heart of Mill Creek overlooking the golf course. This property boasts the ultimate backyard featuring a large swimming pool, fire pit, greenhouse, basketball court, outdoor kitchen, and a screened-in back patio.
\$699,900



8324 Cates Creek Drive
With this Hill Country Ranch, Randy Taylor brings a more traditional design still paired well with modern flair.
\$499,900



12246 Blackberry Rd
Beautiful home just outside of Salado city limits! Large formal dining, breakfast area, and oversized living room perfect for all your entertaining needs!
\$359,900



8425 Anna's Spring Drive
Randy Taylor brings a beautiful mix of modern flair with traditional warmth inside this modern farmhouse.
\$529,900



903 Rose Way, Salado
Your chance to own this picturesque Bed and breakfast in the heart of downtown Salado
\$950,000



600 Ridgecrest Drive
Unique home in coveted Mill Creek Subdivision. Incredible great room, covered porch and fantastic corner lot with a very spacious back yard - a great home for hosting!
\$299,900



Royal Ridge Subdivision
10+ Acre tracts of Hill Country acreage minutes from downtown Salado & Mill Creek Golf Course. An abundance of options: Live Oaks, small creek, beautiful bottom land, coastal pastures, hill top views



1152 W FM 218
EXCELLENT HUNTING / WEEKEND RANCH OR PERMANENT HOMESTEAD WITH OVER 3,000 SQUARE FOOT HOME BUILT IN 1976.
\$750,000



2243 Woodland Bend
This charming home is located in one of Salado's newer subdivisions. A beautiful neighborhood. All homes are situated on half acre lots, no zero lots here!
\$375,000



7105 Smith Dairy Lane
Beautiful Ranch style home on five acres, four sided rock beautifully landscaped with circle cement driveways with shop and fenced area for the horse
\$489,600



1413 Bishop Drive
Beautiful recently remodeled garden home just across the street from Mill Creek Pro Shop.
\$286,900

FARM & RANCH • COMMERCIAL

LOTS

Mill Creek Meadows - Brand new subdivision with lots on the golf course and mature trees! Starting at \$59,900 with 48 lots available

Mystic River - Lots overlooking Leon River. Starting in the \$129,000 for waterfront or \$49,900 for interior lots

Spring Creek - Salado's newest community. A must see subdivision off of FM2484 Lots starting at \$60,000

1 Lot in Mill Creek \$29,900
9860 Hodge Canyon

NEIGHBORHOODS

Spring Creek - Salado's newest neighborhood, West of town on FM2484 Beautiful hardwood trees. The peaceful spot you've been searching for to build your new home. Few miles out of Salado, a short drive from Belton, Harker Heights and Georgetown.

Mill Creek Meadows - Dream home on a golf course? Whether you are a golfer or just enjoy overlooking a well-maintained course from your home, Mill Creek Meadows is for you! Gated, community park within strolling distance of Mill Creek Golf Course and a golf cart ride away from Salado shopping and dining.

Mystic River - Lots overlooking the Leon River. Neighborhood shaded by a canopy of Live Oak and Pecan trees, walk from your back door to your personal dock at the river bank. Watch the kids plunge into the river from the rope swing, paddle your kayak, all while centrally located between Belton and Temple.

ACREAGE

10 Acres along I-35 frontage, sewage available \$1,750,000

30 Acres on the Leon River, Belton

107 Acres with 4,500 feet on Leon River

5 Acres 2251 County Road 234 Georgetown, TX 78633

300 Acres 0000 CR 212 Coolidge, TX 76635

37.2 Acres 2821 Sulphur Wells Rd

COMMERCIAL

7.695 acre Investment Property in Temple off South 31st ST, \$649,900

1.979 acre 2801 S Interstate 35 Belton, TX 76513



80 S. Main Street Salado, Texas 254-947-5577

www.FirstTexas.com

